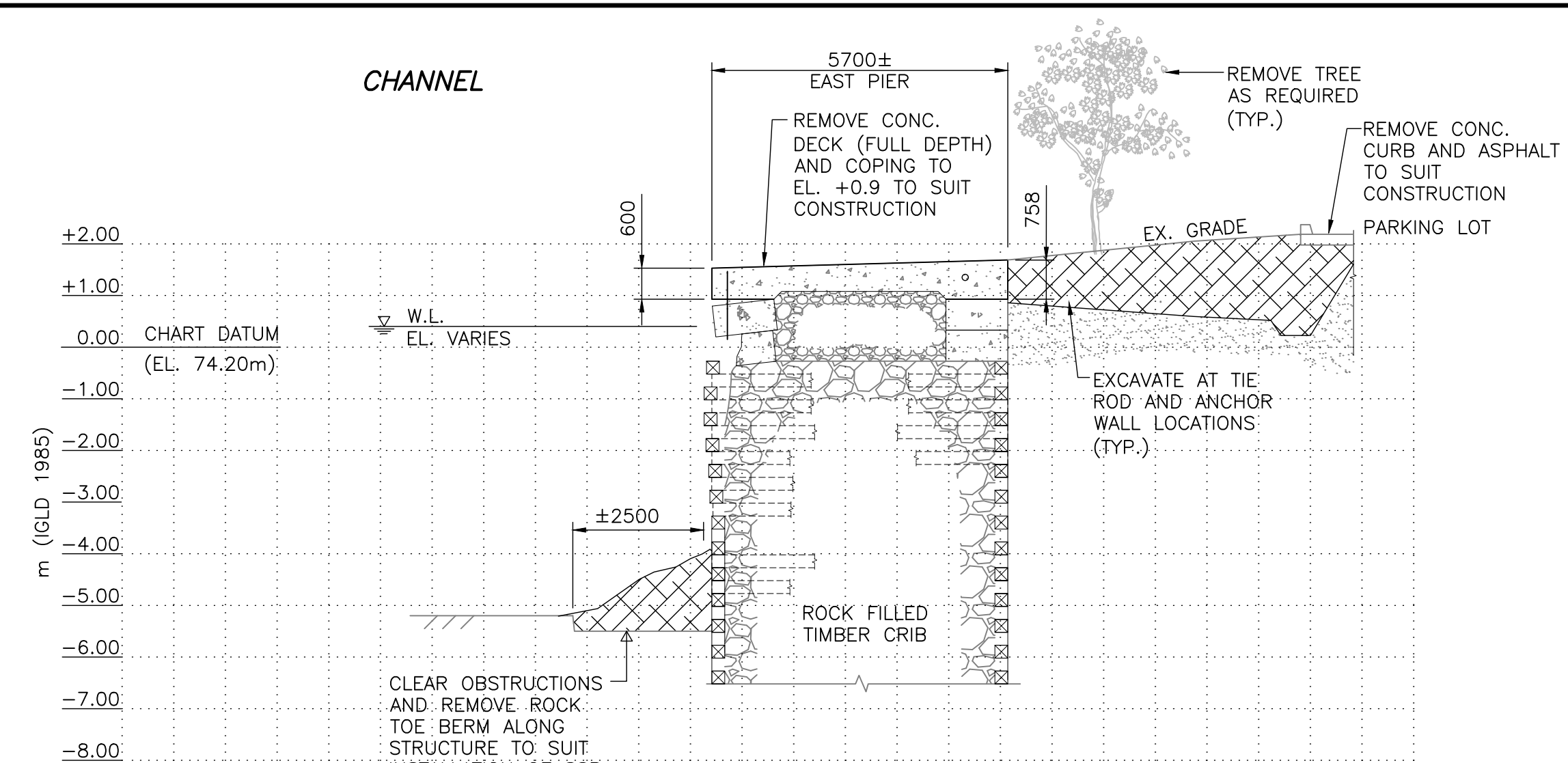


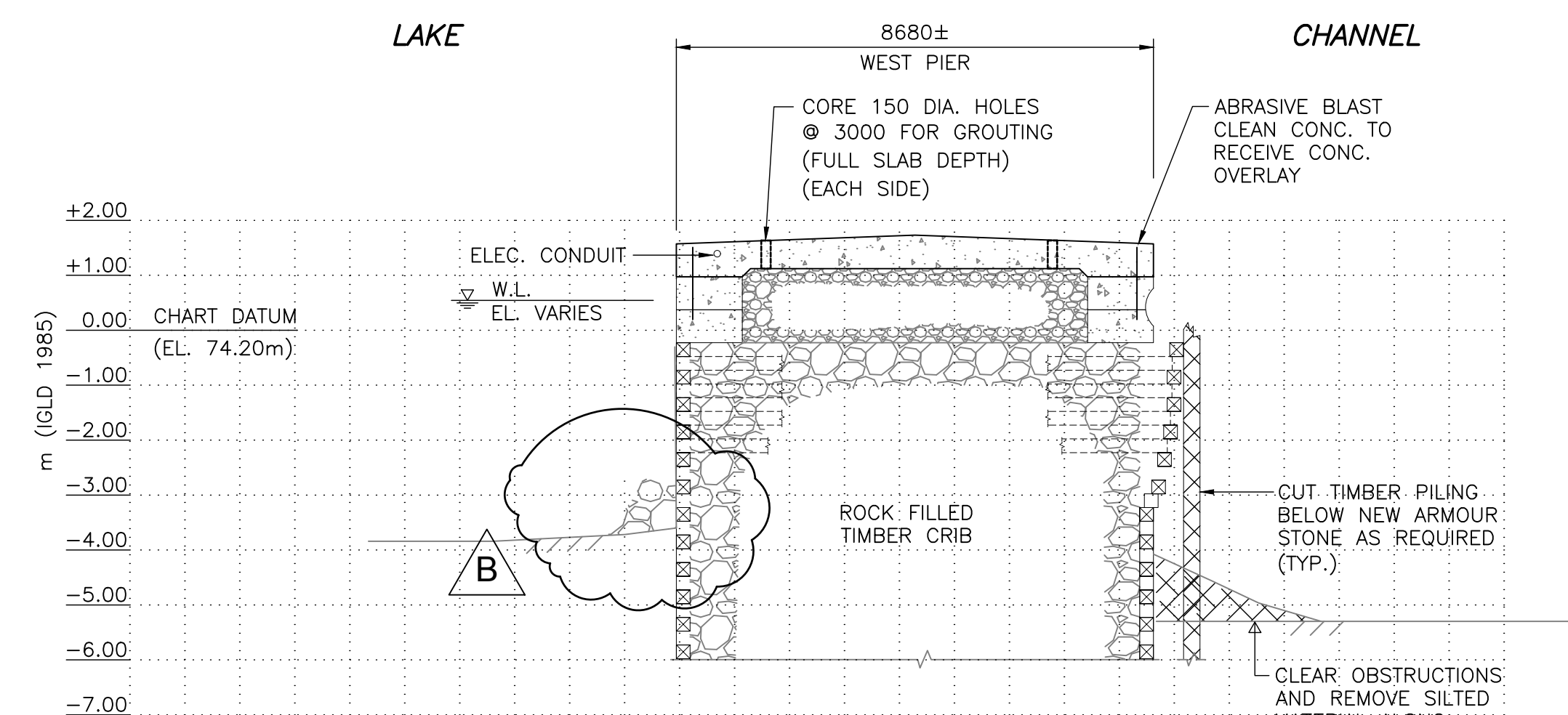


locator code
code de localisation

4768



4
S-04



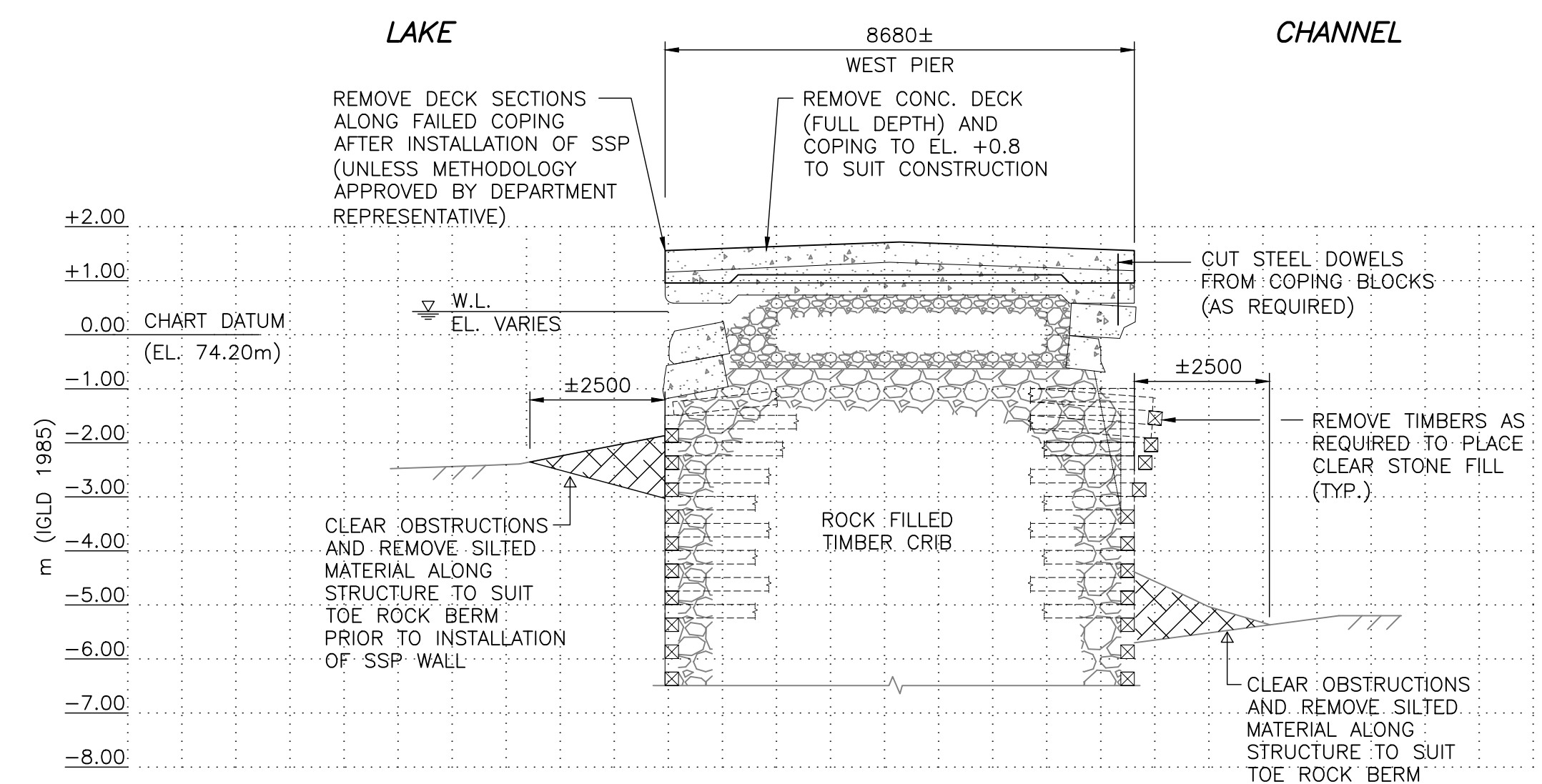
WEST PIER

SECTION

5
S-03

SCALE 1:100

STA. W 2+001± TO STA. W 2+123±

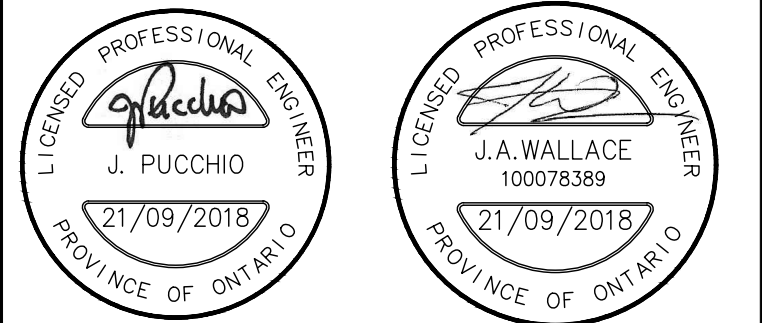


6
S-03

SECTION

SCALE 1:100

STA. W 2+123± TO STA. W 2+230±



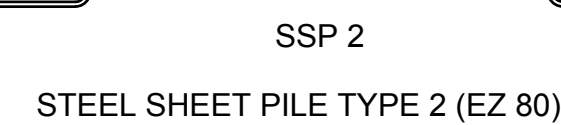
1. EXISTING LIFE RING STATIONS AND BOLLARDS SHALL BE ABRASIVE BLAST CLEAN TO BARE WHITE METAL (SPSC-SP5) AND PAINTED WITH TWO COATS OR PRIMER AND 2 FINISHED COATS AS SPECIFIED.
2. PRIOR TO INSTALLATION, REVIEW THE LOCATIONS TO REINSTATE REMOVED COMPONENTS (BOLLARDS, LRS, ETC.) WITH THE DEPARTMENTAL REPRESENTATIVE.
3. DECK WIDTH INDICATED ON PLANS ARE TO INSIDE FACES OF SSP.

B	REVISED EXISTING ROCK FILL	SEPT. 21, 2018
A	ISSUED FOR TENDER	AUG. 24, 2018
revision		date

AECOM

THIS DRAWING HAS BEEN PREPARED FOR USE OF AECOM'S CLIENT AND MAY NOT BE USED, REPRODUCED OR RELIED UPON BY THIRD PARTIES, EXCEPT AS AGREED BY AECOM AND ITS CLIENT, AS REQUIRED BY LAW OR FOR USE BY GOVERNMENTAL REVIEWING AGENCIES. AECOM ACCEPTS NO RESPONSIBILITY, AND DENIES ANY LIABILITY WHATSOEVER, TO ANY PARTY THAT MODIFIES THIS DRAWING WITHOUT AECOM'S EXPRESS WRITTEN CONSENT. DO NOT SCALE THIS DOCUMENT. ALL MEASUREMENTS MUST BE OBTAINED FROM STATED DIMENSIONS.

drawing no. dessin no.	locator code code de localisation
S-09	4768



STEEL SHEET PILE (SSP) SCHEDULE				
TYPE	SECTION MODULUS (cm ³ / LIN. m)	LENGTH OF SHEETS (m)	WIDTH OF SHEETS (m)	THICKNESS (mm)
SSP 1 (XZ 95)	1800	13.7	635	9.5
SSP 2 (EZ 80)	1100	9.1	635	8.0

