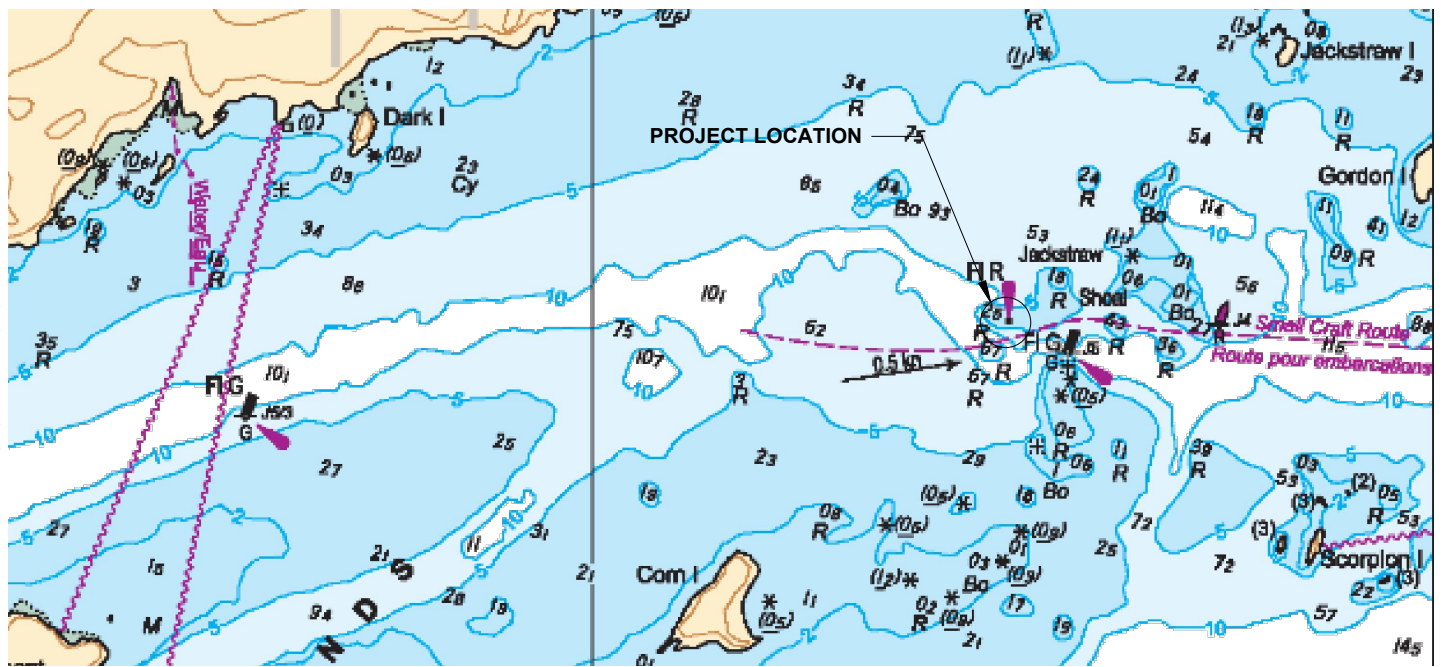


# CHART 1438



## EXISTING AID

EX. VISUAL DAYMARK 8.6 m<sup>2</sup>

A. EX. TOWER 1.2Ø CSP, REMOVE AND DISPOSE

B. EX. FOUNDATION, CONCRETE, REMOVE AND DISPOSE

C. EX. NAVIGATION EQUIPMENT, SELF CONTAINED LANTERN, SALVAGE, RETURN TO CCG FOR DISPOSAL.

D. EX. SHORE PROTECTION, MAINTAIN

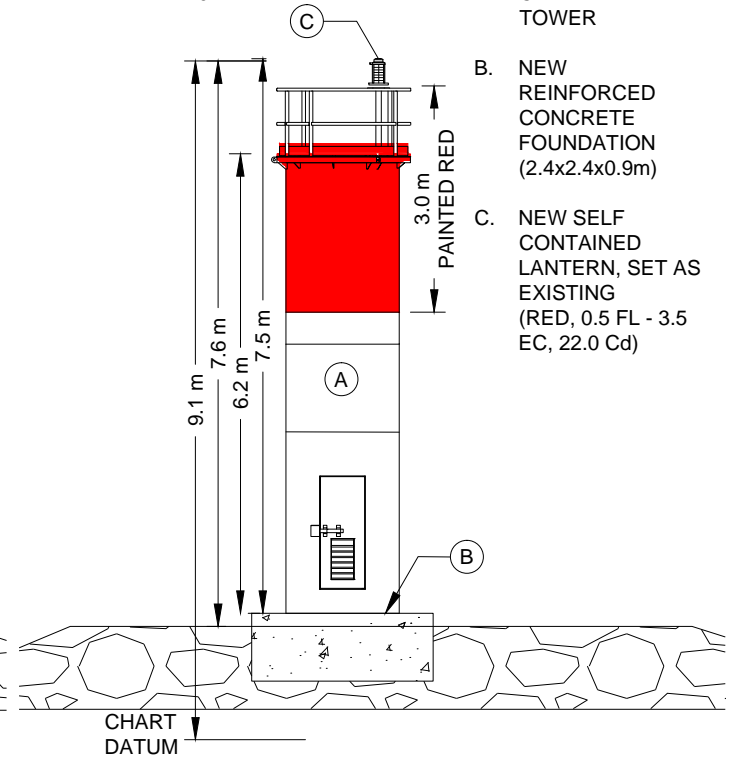
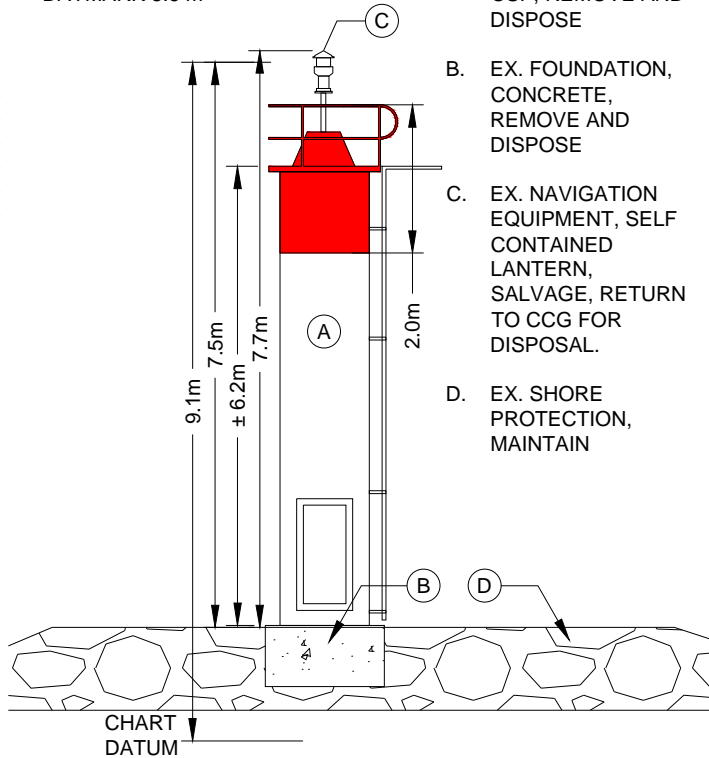
## PROPOSED AID

PROP. VISUAL DAYMARK 11.0 m<sup>2</sup>

A. NEW 1.5m Ø CLAYMAR TYPE TOWER

B. NEW REINFORCED CONCRETE FOUNDATION (2.4x2.4x0.9m)

C. NEW SELF CONTAINED LANTERN, SET AS EXISTING (RED, 0.5 FL - 3.5 EC, 22.0 Cd)



**NOTES:**

1. TOWER SELECTION IN ACCORDANCE WITH CENTRAL AND ARCTIC FIXED AID REPLACEMENT DECISION TREE.
2. CHANGE IN CONFIGURATION PREVIOUSLY REVIEWED WITH LOCAL LOS OFFICER.
3. EX. OSPREY PLATFORM (NOT SHOWN) TO BE MAINTAINED.
4. BIRD NETTING BY OTHERS

<p>Fisheries and Oceans Canada Pêches et Océans Canada Canadian Coast Guard Garde côtière Canadienne</p>	<p>Asset - Actif</p> <p><b>LL 366 JACKSTRAW SHOAL SHOAL LIGHT</b></p> <p>Drawing - Dessin</p> <p><b>PROPOSED REPLACEMENT</b></p>	<p>drawn - dessiné</p> <p>D. JIBB</p>	<p>date</p> <p>26 MAY 18</p>
		<p>approved - approuvé</p> <p>APPROVED</p>	<p>date</p> <p>APPROVED DATE</p>
<p>CCG ref. no. - no. réf. GCC</p> <p>EWTM 8010-0366000</p>	<p>scale - échelle</p> <p>NTS</p>	<p>drawing no. - no. dessin</p> <p>TBD</p>	<p>sheet-feuille</p> <p>01/01</p>
		<p>rev</p> <p>A</p>	