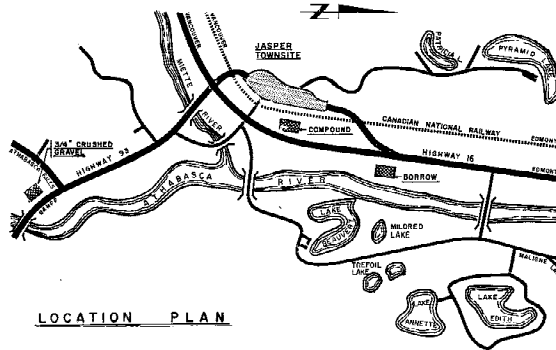


DEPARTMENT OF
**INDIAN AFFAIRS &
 NORTHERN DEVELOPMENT**
 TECHNICAL SERVICES BRANCH

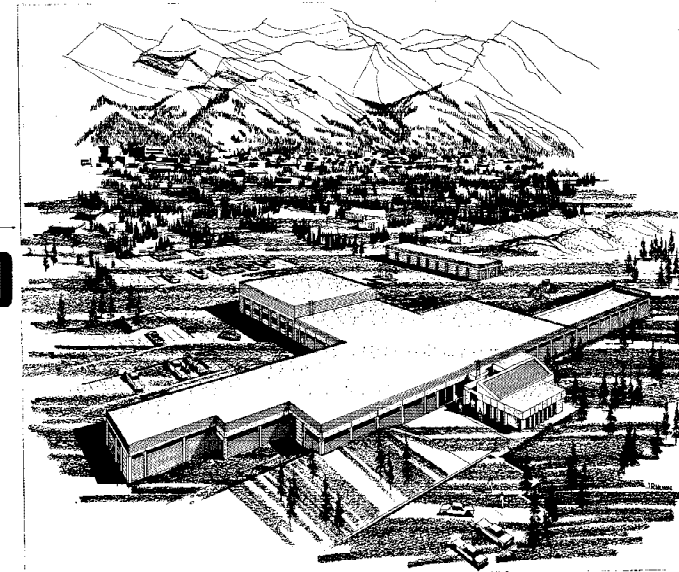
MAINTENANCE COMPOUND

Jasper National Park
Jasper, Alberta

index of drawings



LOCATION PLAN



CIVIL

SHEET NO.	TITLE
C1	UNDERGROUND UTILITIES AND SITE PLAN
C1A	UNDERGROUND UTILITIES AND SITE PLAN AS BUILT
C2	EXISTING SPOT ELEVATIONS SITE PLAN
C3	PROPOSED DRAINAGE AND STORM SEWER SYSTEM
C3a	PLAN PROFILE OF PROPOSED ROAD GRADE SITE APPROACH ROADS FROM STA. 0+00 TO 7+50
C3b	PLAN PROFILE (STA. 18+00 TO 27+50)
C3c	PLAN PROFILE OF PROPOSED ROAD GRADES SITE APPROACH ROADS FROM STA. 24+24 TO 34+36
C3d	PLAN PROFILE (STA. 0+00 TO 8+00)
C3e	TYP. ROAD SECTION INT. PLAN 48" C.M.P. DETAILS
C6	PROPOSED ROAD CROSS SECTIONS AND DETAILS
C7	PROPOSED ROAD CROSS SECTIONS AND DETAILS
C8	PLANTING PLAN, PLANT LIST & DETAIL
C9	PLANTING PLAN
C10	TYP. ROAD SECTION, INTERSECTION PLAN 48" C.M.P. DETAILS

ARCHITECTURAL

SHEET NO.	TITLE
A-1	KEY PLAN - OVERALL BUILDING PLAN
A-2	PLANS - CENTRAL STORES & MECHANICAL ROOM
A-3	PLANS - TRADE SHOPS AND WARDEN'S FACILITIES, MISCELLANEOUS DETAILS
A-4	PLANS - EQUIPMENT AND SERVICE AREA OFFICE AREA, MISCELLANEOUS DETAILS
A-5	ROOM FINISH SCHEDULE
A-6	DOOR AND FRAME SCHEDULE, FRAME DETAILS
A-7	ELEVATIONS
A-8	ELEVATIONS AND WINDOW DETAILS
A-9	WALL SECTIONS
A-10	WALL SECTIONS AND MISCELLANEOUS DETAILS
A-11	OFFICE WALL SECTIONS AND DETAILS
A-12	OFFICE WALL SECTIONS AND DETAILS
A-13	ROOF PLAN, MILLWORK AND MISCELLANEOUS DETAILS
A-14	FLOOR PLAN & EXTERIOR ELEVATIONS COLD & HEATED STORAGE BLDG.
A-15	WALL SECTIONS & DETAILS COLD & HEATED STORAGE BLDG.

STRUCTURAL CONCRETE

SHEET NO.	TITLE
S-1	FOUNDATION PLAN CENTRAL STORES & MECHANICAL ROOM
S-2	FOUNDATION PLAN TRADE SHOPS & WARDEN FACILITIES & GENERAL CONCRETE NOTES
S-3	FOUNDATION PLAN OFFICE & SERVICE AREA
S-4	FOUNDATION DETAILS MECHANICAL ROOM
S-5	FOUNDATION DETAILS
S-6	MISCELLANEOUS FOUNDATION DETAILS
S-7	SUMP & TRENCH DETAILS
S-8	COLUMN/SWIRL BEAM LAYOUT SERVICE AREA
S-9	SALT STORAGE SHED
S-10	FOUNDATION PLAN ROOF PLAN COVERED BULK STORAGE
S-11	ANCHOR BOLT SETTING PLAN & FOUND PLAN COLD & HEATED STORAGE BUILDING
S-12	MISCELLANEOUS DETAILS

STRUCTURAL STEEL

SHEET NO.	TITLE
S-20	ANCHOR BOLT SETTING PLAN CENTRAL STORES & MECHANICAL ROOM
S-21	ANCHOR BOLT SETTING PLAN TRADE SHOPS & WARDEN FACILITIES
S-22	ANCHOR BOLT SETTING PLAN, ROOF PLAN SECTIONS & DETAILS - OFFICE AREA
S-23	COLUMN & BASE PLATE LAYOUT CENTRAL STORES & MECHANICAL ROOM
S-24	COLUMN & BASE PLATE LAYOUT TRADE SHOPS & WARDEN FACILITIES
S-25	ROOF PLAN, CENTRAL STORES & MECHANICAL ROOM
S-26	ROOF PLAN TRADE SHOPS & WARDEN FACILITIES
S-27	ROOF PLAN SERVICE AREA
S-28	SOUTH ELEVATION & DETAILS
S-29	NORTH
S-30	EAST
S-31	WEST
S-32	COLUMN & BASE PLATES & ROOF PLAN COLD & HEATED STORAGE BUILDING
S-33	BUILDING CROSS SECTIONS ON LINES 9 & 12
S-34	EXTERIOR ELEVATION & DETAILS COLD & HEATED STORAGE BLDG.

MECHANICAL

SHEET NO.	TITLE
M-1	ROOF PLAN & DETAILS
M-2	FOUNDATION PLAN & DETAILS
M-3	CENTRAL STORES PLUMBING PLAN
M-4	TRADE SHOPS PLUMBING PLAN
M-5	SERVICE GARAGE, OFFICE PLUMBING PLAN
M-6	CENTRAL STORES, VENTILATION & HEATING PLAN, SECTIONS & DETAIL
M-7	TRADE SHOPS, VENTILATION & HEATING PLAN & SECTIONS
M-8	SERVICE GARAGE, OFFICE, VENTILATION & HEATING PLANS, SECTIONS & DETAILS
M-9	SPRINKLER DRAWING
M-10	MECHANICAL ROOM, PLAN, SECTIONS & PIPING SCHEMATIC
M-11	HOT & COLD STORAGE BUILDING, HEATING & SPRINKLERS
M-12	GAS PUMPS & STORAGE TANKS

ELECTRICAL

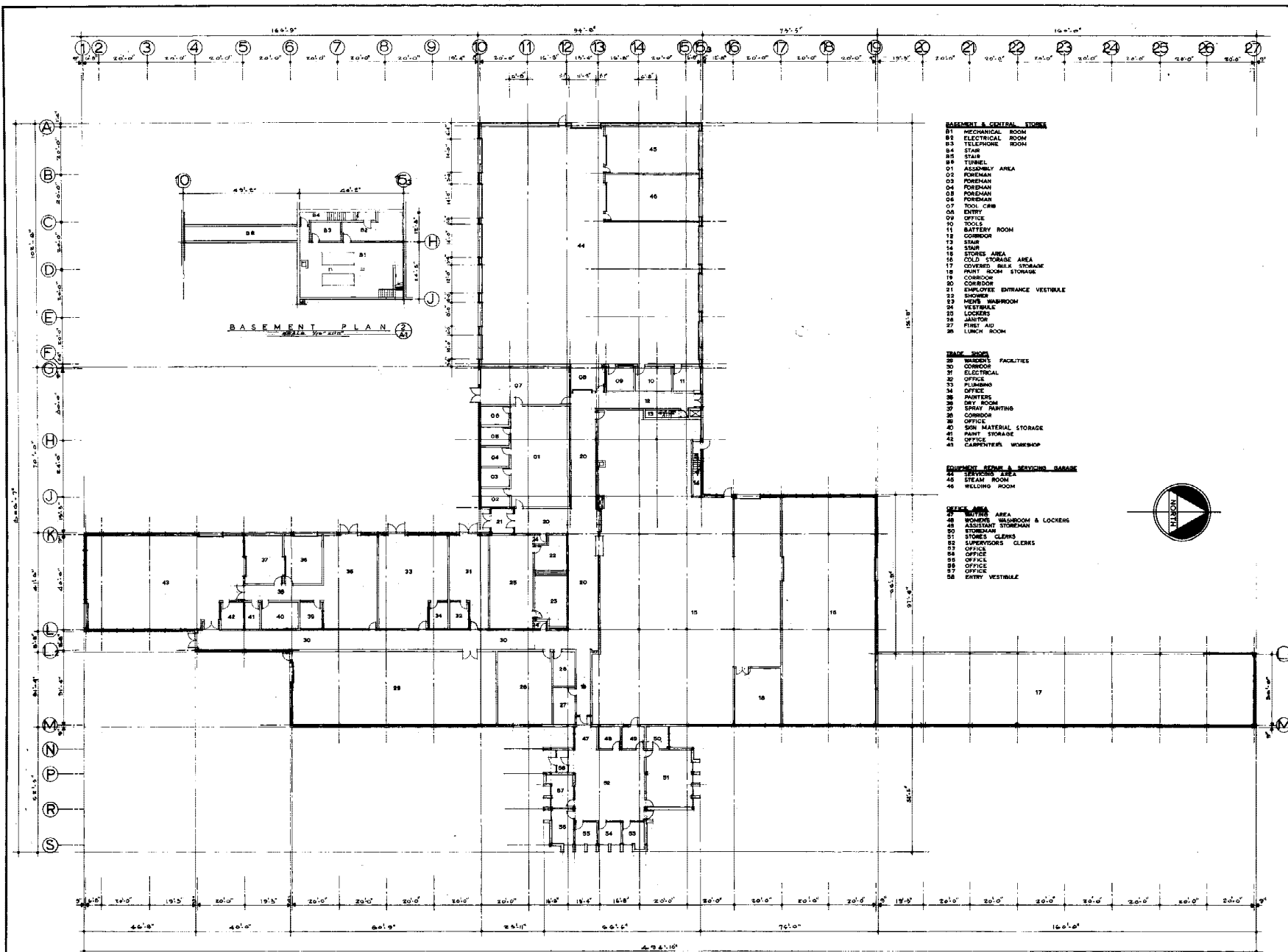
SHEET NO.	TITLE
E-1	ELECTRICAL POWER LAYOUT
E-2	POWER & FIRE ALARM SYSTEMS
E-3	TELEPHONE & PUBLIC ADDRESS SYSTEM
E-4	MAIN DISTRIBUTION SCHEMATIC & DETAILS
E-5	BASEMENT PLAN & DETAILS
E-6	PLAN SECTION STORES - LIGHTING
E-7	PLAN SECTION STORES - POWER
E-8	PLAN SECTION SHOPS & BULK STORAGE - LIGHTING
E-9	PLAN SECTION SHOPS & BULK STORAGE - POWER
E-10	PLAN SECTION SERVICE AREA & HEATED & COLD STORAGE - LIGHTING
E-11	PLAN SECTION SERVICE AREA & HEATED & COLD STORAGE - POWER
E-12	ELECTRICAL DETAILS
E-13	ELECTRICAL DETAILS
E-14	ELECTRICAL DETAILS

ASSOCIATED ENGINEERING SERVICES LTD. CONSULTING ENGINEERS

REGINA EDMONTON CALGARY PRINCE GEORGE VANCOUVER VICTORIA

NWJ 71/R4
 0 of 82

Wynn Hames Forbes Lord Feldberg Schmidt - Consulting Architects



FLOOR PLAN
SCALE 1/16" = 1'-0"

AS - BUILT
Approved By: Evans Date: 17 Jan 73

**Wynne James Forbes Lord Feldberg Schmidt
Consulting Architects**

Pine Engineering Consultant
Structural - Site Development - Mechanical - Electrical

ATSL	ASSOCIATED ENGINEERING SERVICES LTD.		
Consulting Engineers	10430 Upper Street	Edmonton, 17, Alberta	781.36 787.2000

DEPARTMENT OF
INDIAN AFFAIRS &
NORTHERN DEVELOPMENT
TECHNICAL SERVICES BRANCH


CANADA

MINISTÈRE DES
AFFAIRES INDIANES
ET DU NORD CANADIEN
SERVICES TECHNIQUES



THE ASSOCIATION OF
PROFESSIONAL ENGINEERS
OF ALBERTA
PLAINT NUMBER
P104
ASSOCIATED ENGINEERING
SERVICES LTD.

reference drawings	date
1st ed. 3548-2204	Feb. 26, 1971

A detail no. détail n°

C drawing no.		desain no.	
drawn by 510401		scale / skala	



ALGERIA 100
7A

7/4/71

projeté 100% titre de projet

MAINTENANCE CONCERNS

Jasper National Park
Jasper, Alberta

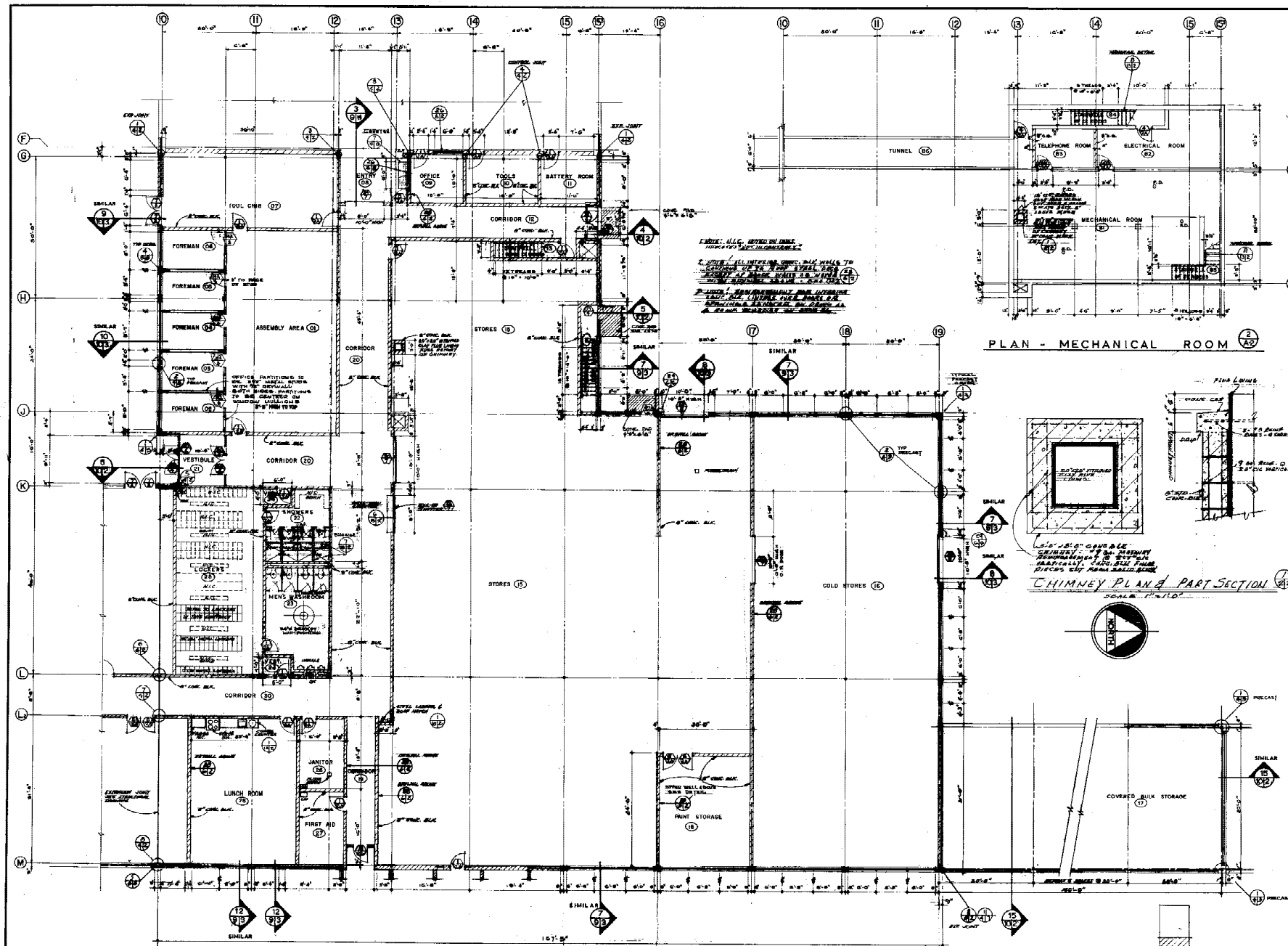
Figure 1. A schematic diagram of the experimental setup. The subject is seated in a chair, viewing a screen displaying a target. The target is a horizontal line, and the subject is required to move a cursor to the target. The cursor is a small circle, and the target is a horizontal line. The subject is required to move the cursor to the target and then to the next target. The targets are arranged in a sequence, and the subject is required to move the cursor from one target to the next. The targets are arranged in a sequence, and the subject is required to move the cursor from one target to the next. The targets are arranged in a sequence, and the subject is required to move the cursor from one target to the next.

KEY PLAN
OVERALL BUILDING PLAN

I

reference no. no de referencia	day no. dia de
-----------------------------------	-------------------

NWJ	71/R4	15 of 8
-----	-------	---------

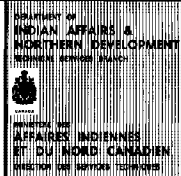


PLAN - CENTRAL STORES & MECHANICAL ROOM
SCALE - 1/8"=1'-0" FIN FLOOR ELEV. 100'-0"

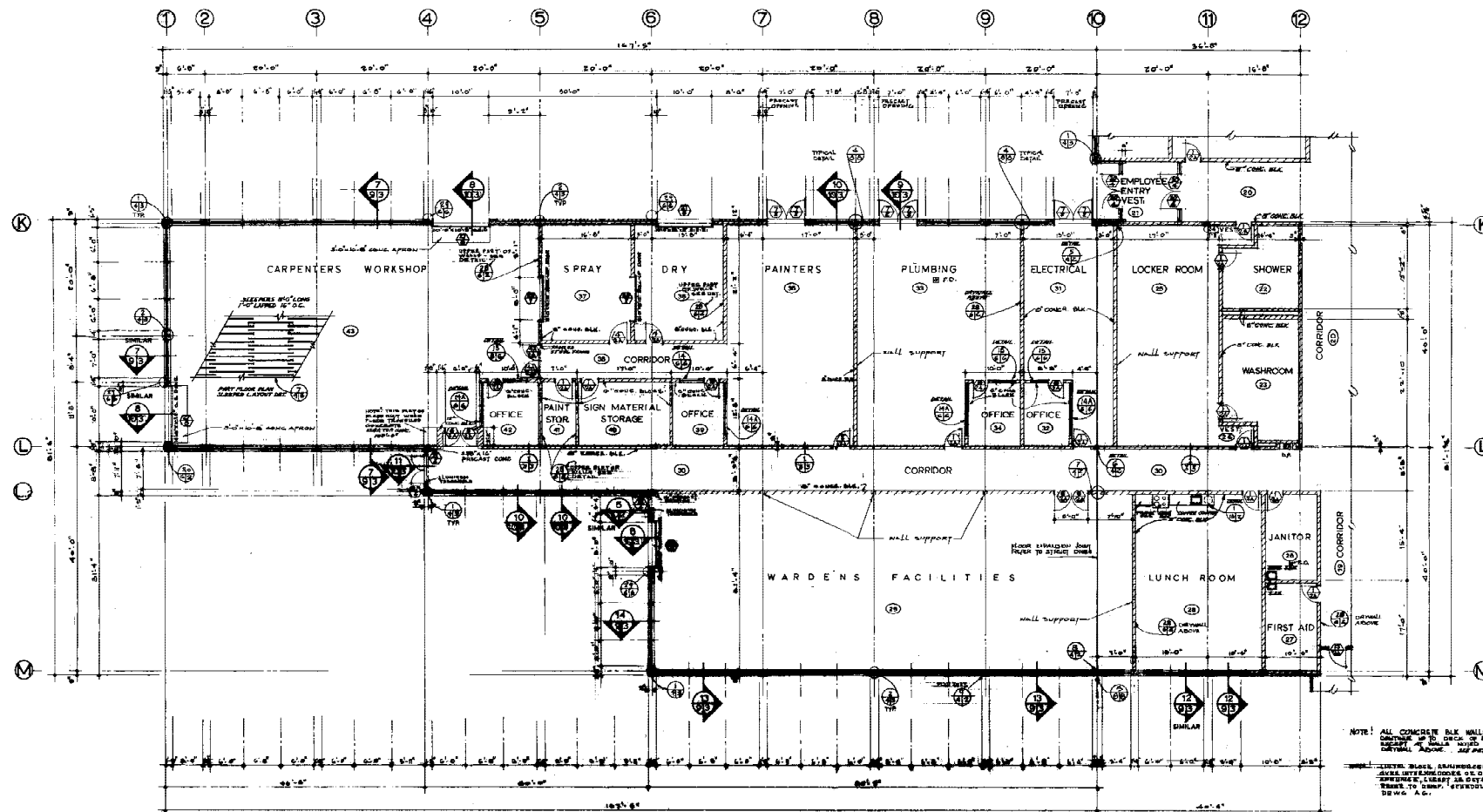
AS-BUILT
Approved By: [Signature] Date: 17 Jan 73

KEY PLAN

Prime Engineering Consultant
Structural - Site Development - Mechanical - Electrical
AESL ASSOCIATED ENGINEERING SERVICES LTD.
WYND HAMES Forbes Lord Feldberg Schmidt Consulting Architects
NWJ 71/R4

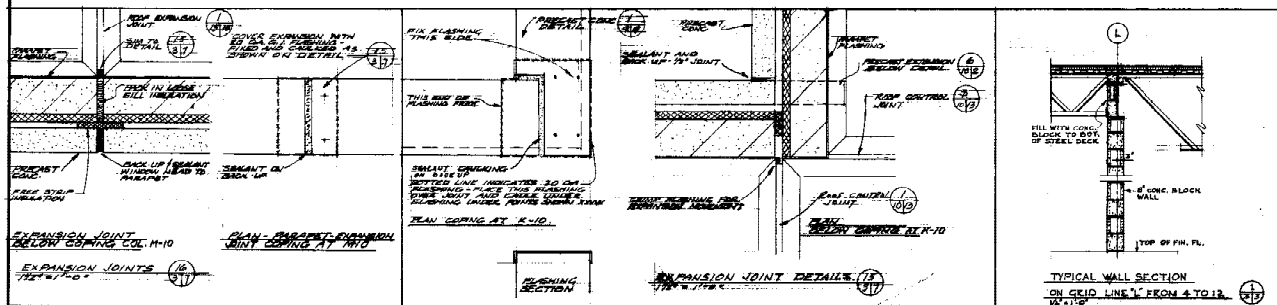


Reference Drawings	
100 No. 3546-2204	Pub. 28, 071
A. Design No.	000000
B. Location Map No.	000000
C. Drawing No.	000000
D. Date	1/17/73
E. Project Title	Maintenance Compound
F. Project No.	000000
G. Project Name	Jasper National Park
H. Project Location	Jasper, Alberta
I. Project Status	AS-BUILT
J. Project Date	17 Jan 73
K. Project Sheet	A2
L. Project Total	16 of 82

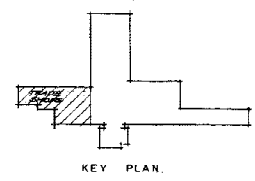


PLAN OF TRADE SHOPS & WARDENS FACILITIES

SCALE 1/8" = 1'-0"
FLOOR ELEVATION = 1000'



AS-BUILT
Approved By: [Signature] Date: 17 Jan 73



INDIAN AFFAIRS & NORTHERN DEVELOPMENT
APPAIRES INDIGENES ET DU NORD CANADIEN

ENGINEER
WYN HAMES FORBES LORD FELDBERG SCHMIDT
Consulting Architects

ASSOCIATED ENGINEERING SERVICES LTD.
Prime Structural - Site Development - Mechanical - Electrical

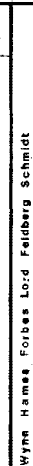
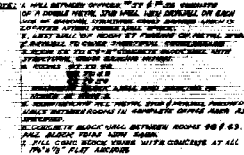
MAINTENANCE COMPOUND
Jasper National Park
Jasper, Alberta

PLANS-TRADE SHOPS
WARDENS FACILITIES
AND MISCELLANEOUS
DETAILS

REFERENCE: NWJ 71/R4
17 of 82



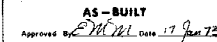
4-4



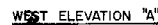
SCALE-1/8"=1'-0"



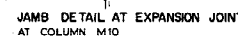
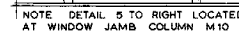
reference no. n° de référence	diag. no. dessin n°
NWJ 71/R4	A4
	18 of 81



A7-



ALUMINUM WINDOWS WITH THERMAL
BREAK AS SPEC'D (1/2 FULL SIZE)

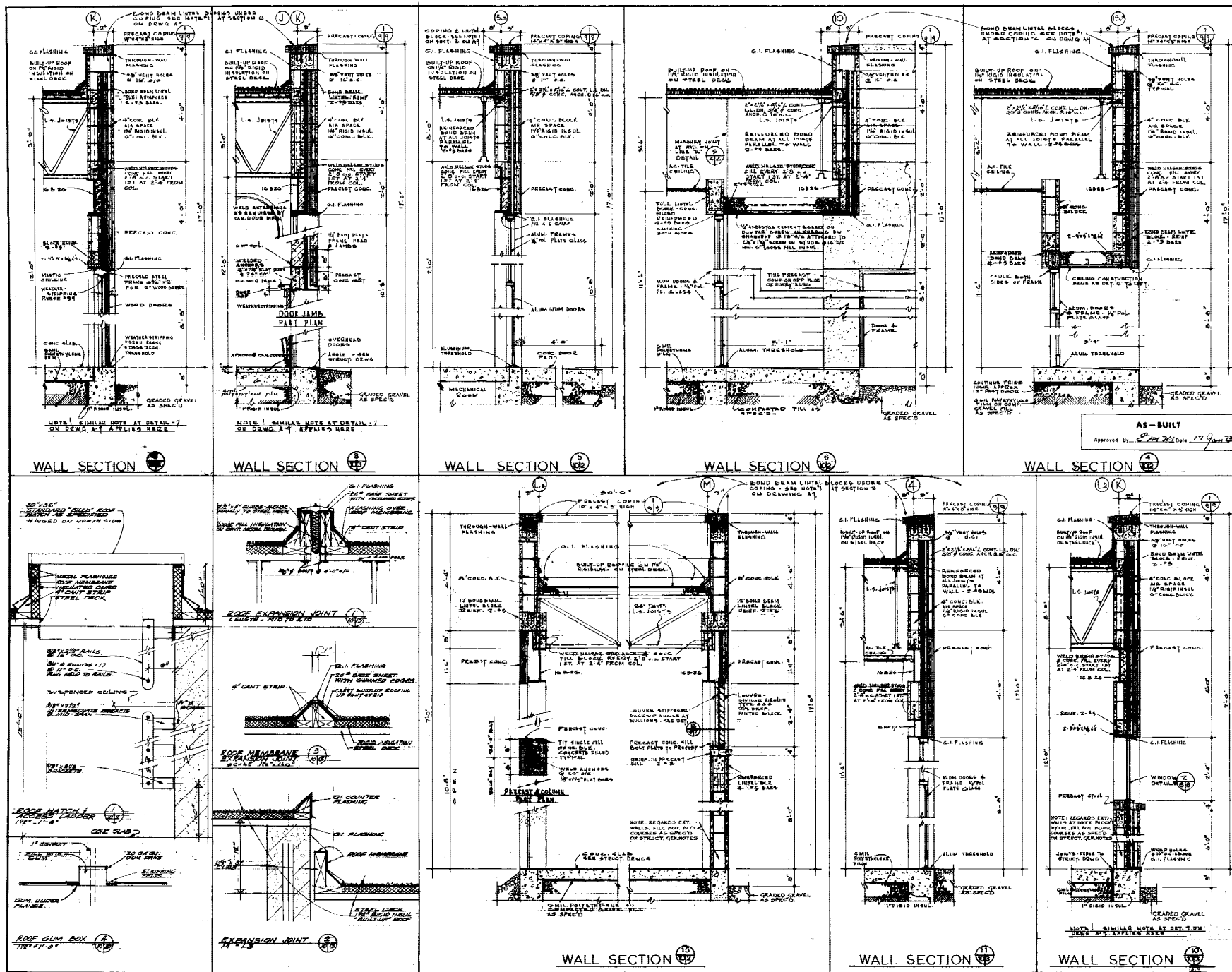


A5 - BUILT

Approved By Emm Date 17 Jan 73

ADSL
Consulting Engineers
ASSOCIATED ENGINEERING SERVICES LTD.
LONDON, W. 1, ENGLAND
TELEGRAMS: 41, 3, 30
TELEPHONE: 41, 3, 30
TELEX: 237 1315

reference no. no de referencia	dwg no. desenho no
NWJ 71/R4	A8
	22 of 85



Wynn Hanes Forbes Ltd. Feldberg Schmidt
Consulting Architects

Engineering Consultant - Mechanical - Electrical

Prime Structural - Site Development

ASSOCIATED ENGINEERING SERVICES LTD.

MAINTENANCE COMPOUND
Jasper National Park
Jasper, Alberta

WALL SECTIONS AND MISCELLANEOUS DETAILS

Job no. 3368-2204 Feb. 28, 1971

Scale: 1/4" = 1'-0"

Drawn by: [Signature]

Checked by: [Signature]

Approved by: [Signature]

Project title: Maintenance Compound

Site: Jasper National Park

Drawn title: WALL SECTIONS AND MISCELLANEOUS DETAILS

Job no. 3368-2204 Feb. 28, 1971

Scale: 1/4" = 1'-0"

Drawn by: [Signature]

Checked by: [Signature]

Approved by: [Signature]

Project title: Maintenance Compound

Site: Jasper National Park

Drawn title: WALL SECTIONS AND MISCELLANEOUS DETAILS

Job no. 3368-2204 Feb. 28, 1971

Scale: 1/4" = 1'-0"

Drawn by: [Signature]

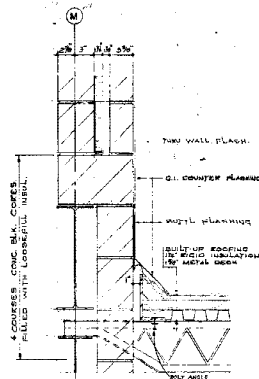
Checked by: [Signature]

Approved by: [Signature]

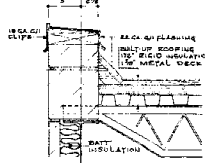
Project title: Maintenance Compound

Site: Jasper National Park

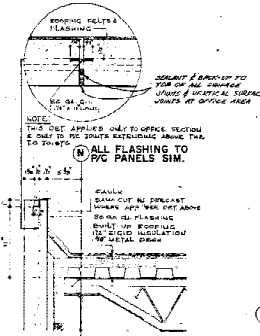
Drawn title: WALL SECTIONS AND MISCELLANEOUS DETAILS



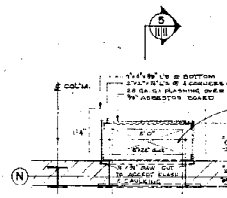
DETAIL 1



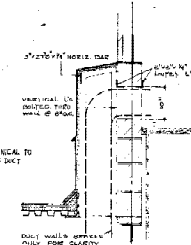
DETAIL 2



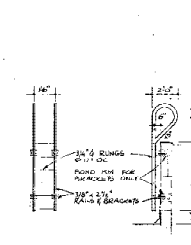
DETAIL 3



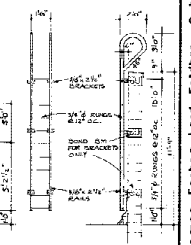
PLAN 4



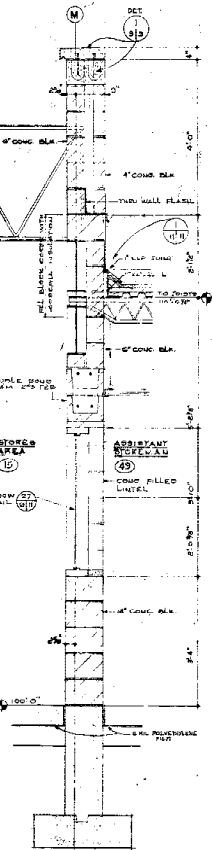
SECTION 5



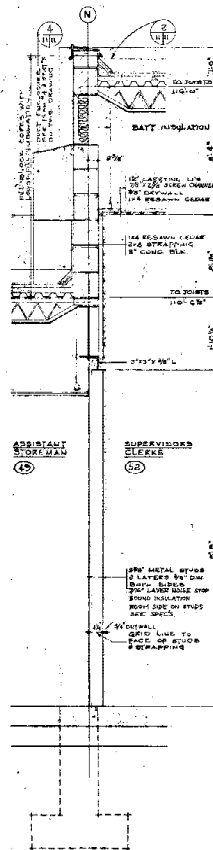
LADDER 6



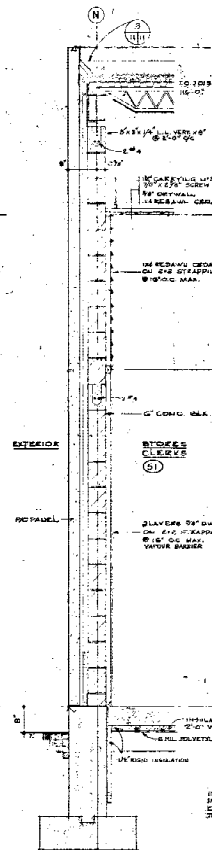
LADDER 7



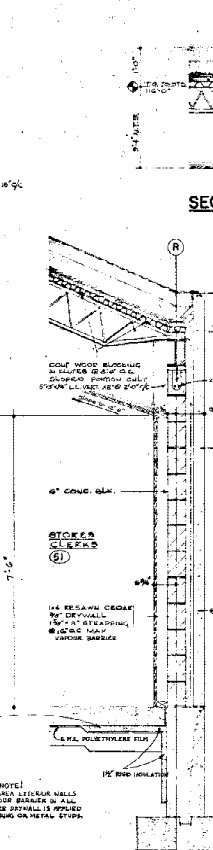
WALL SECTION 16



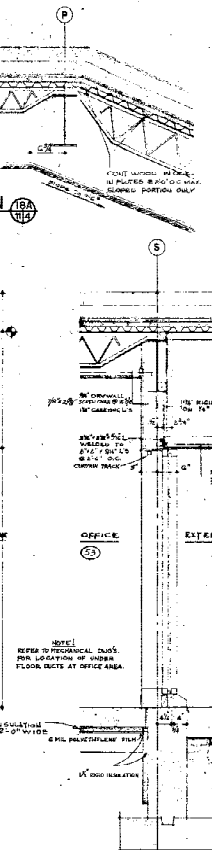
WALL SECTION 17



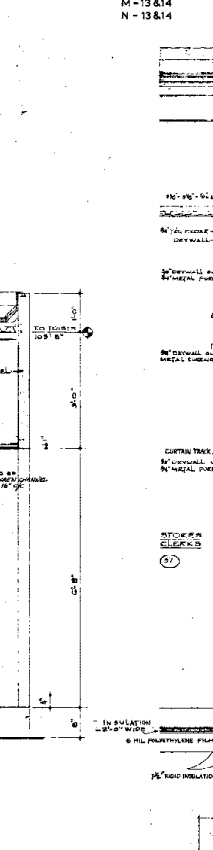
WALL SECTION 18



WALL SECTION 19



WALL SECTION 20



WALL SECTION 21

AS-BUILT
Approved By: [Signature] Date: 17 Jan 75

Wynn Hames Forbes Lord Feldberg Schmidt
Consulting Architects

Prime Engineering Consultant
Structural - Site Development - Mechanical - Electrical

AESL ASSOCIATED ENGINEERING SERVICES LTD.
Consulting Engineers

DEPARTMENT OF
INDIAN AFFAIRS &
NORTHERN DEVELOPMENT
TECHNICAL SERVICES BRANCH

MINISTER DES
AFFAIRES INDIENNES
ET DU NORD CANADIEN
DIRECTION DES SERVICES TECHNIQUES

revision: _____ date: _____

reference drawings: _____
job no. 3546-2204 Feb. 26, 1971

A detail no. _____
B location, elev. no. / new detail no. _____
C drawing no. _____

job number / sheet no. project 3546-2204
revised by / date: _____
rechecked by / date: _____
project title: _____

MAINTENANCE
COMPOUND
Jasper National Park
Jasper, Alberta

drawing title: OFFICE WALL
SECTIONS & DETAILS
NWJ 71/R4
25 of 52

