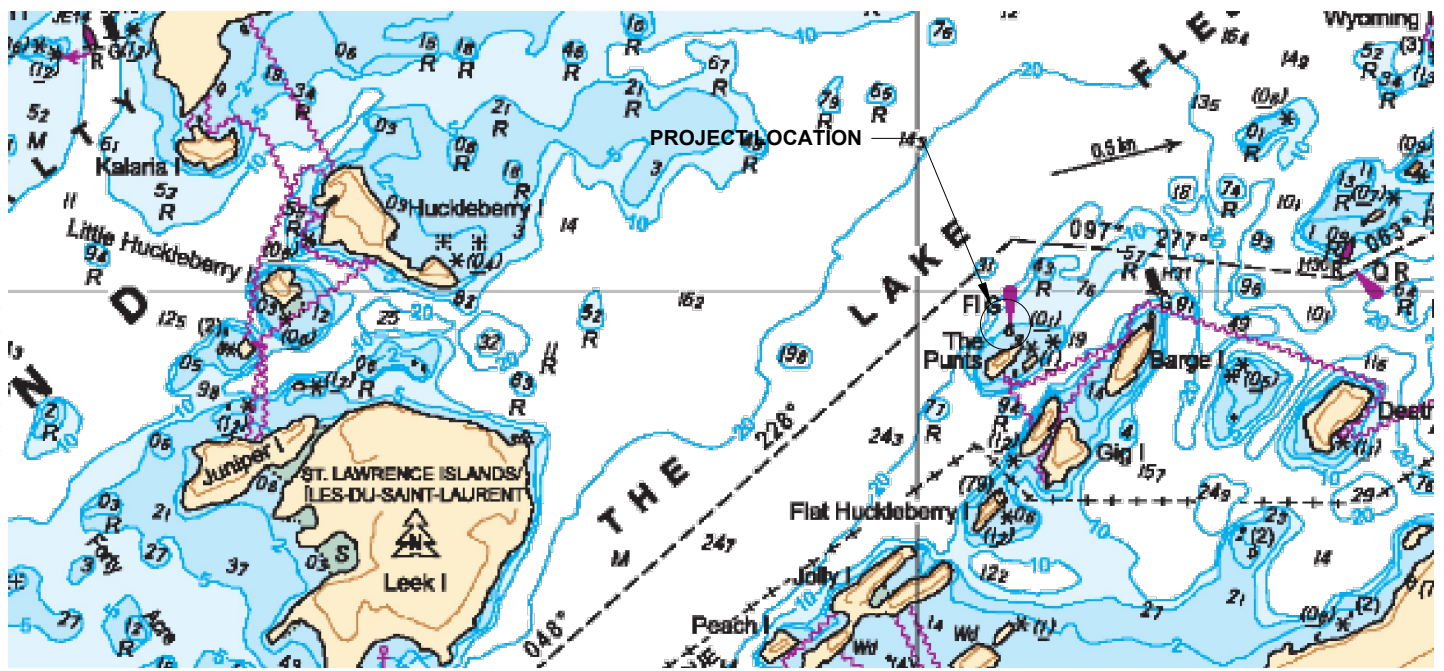


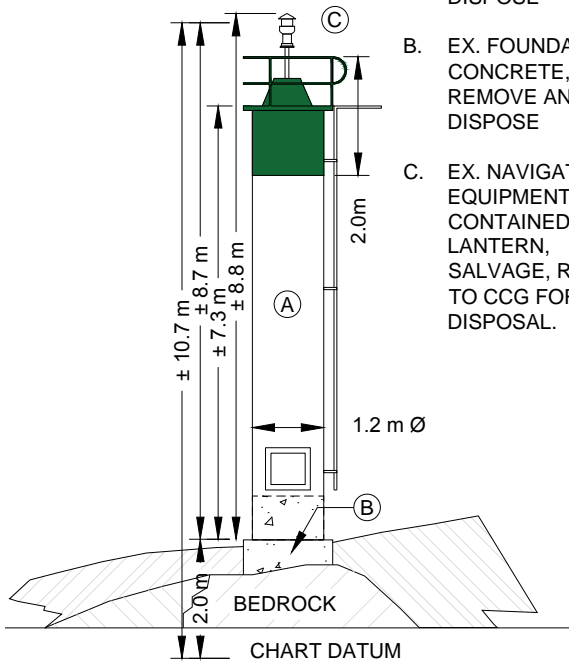
CHART 1438



EXISTING AID

EX. VISUAL DAYMARK 8.6 m²

- A. EX. TOWER 1.2Ø CSP, REMOVE AND DISPOSE
- B. EX. FOUNDATION, CONCRETE, REMOVE AND DISPOSE
- C. EX. NAVIGATION EQUIPMENT, SELF CONTAINED LANTERN, SALVAGE, RETURN TO CCG FOR DISPOSAL.

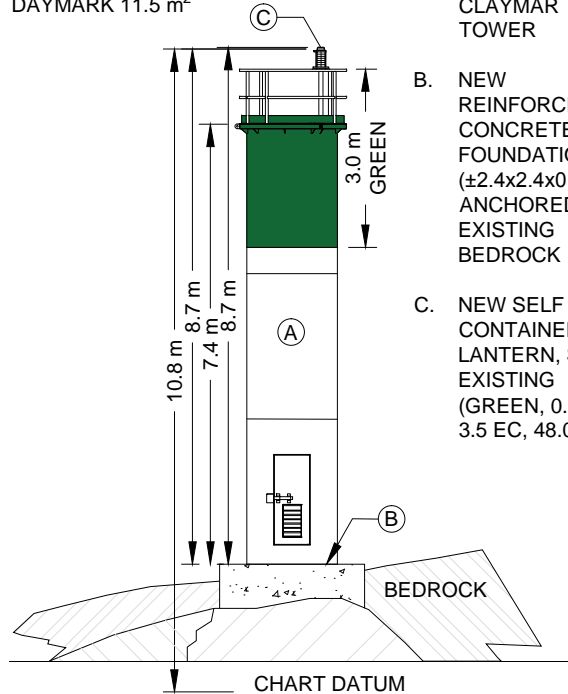


EX. CHS MEASUREMENTS (SIPA) INCORRECT DATA EXTRAPOLATED FROM PHOTOS

PROPOSED AID

PROP. VISUAL DAYMARK 11.5 m²

- A. NEW 1.5m Ø CLAYMAR TYPE TOWER
- B. NEW REINFORCED CONCRETE FOUNDATION (±2.4x2.4x0.9m) ANCHORED TO EXISTING BEDROCK
- C. NEW SELF CONTAINED LANTERN, SET AS EXISTING (GREEN, 0.5 FL - 3.5 EC, 48.0 Cd)



NOTES:

1. TOWER SELECTION IN ACCORDANCE WITH CENTRAL AND ARCTIC FIXED AID REPLACEMENT DECISION TREE.
2. CHANGE IN CONFIGURATION PREVIOUSLY REVIEWED WITH LOCAL LOS OFFICER.
3. HORIZONTAL POSITION MAY SHIFT TO PREFERRED AREA WITH PREFERRED SOIL CONDITIONS

<p>Fisheries and Oceans Canada Pêches et Océans Canada Canadian Coast Guard Garde côtière Canadienne</p>	<p>Asset - Actif</p> <p>LL 371.2 THE PUNTS SHOAL LIGHT</p> <p>Drawing - Dessin</p>	<p>drawn - dessiné</p> <p>D. JIBB</p>	<p>date</p> <p>26 MAY 18</p>		
		<p>approved - approuvé</p> <p>APPROVED</p>	<p>date</p> <p>APPROVED DATE</p>		
<p>CGG ref. no. - no. réf. GCC</p> <p>EWTM 8010-0371200</p>	<p>scale - échelle</p> <p>NTS</p>	<p>PROPOSED REPLACEMENT</p>	<p>drawing no. - no. dessin</p> <p>TBD</p>	<p>sheet-feuille</p> <p>01/01</p>	<p>rev</p> <p>A</p>