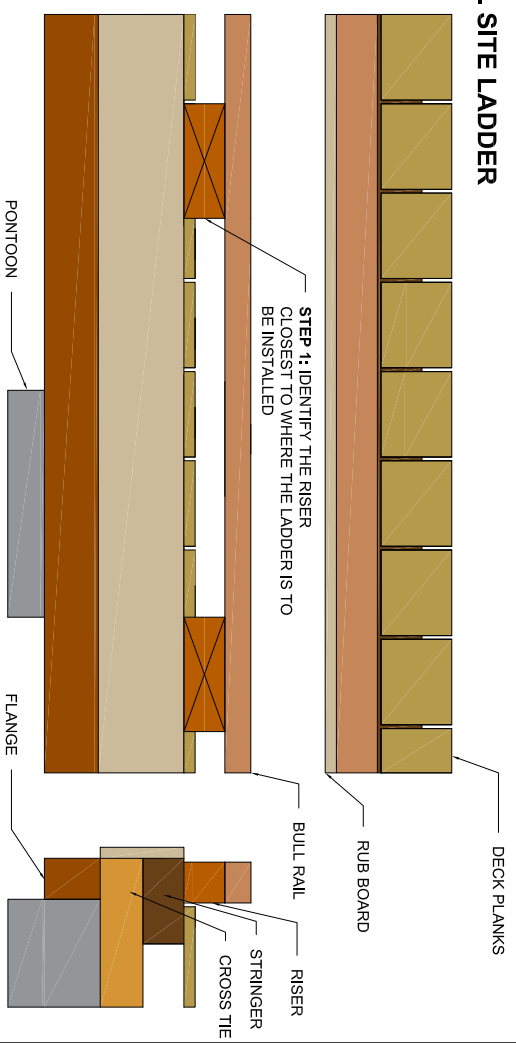
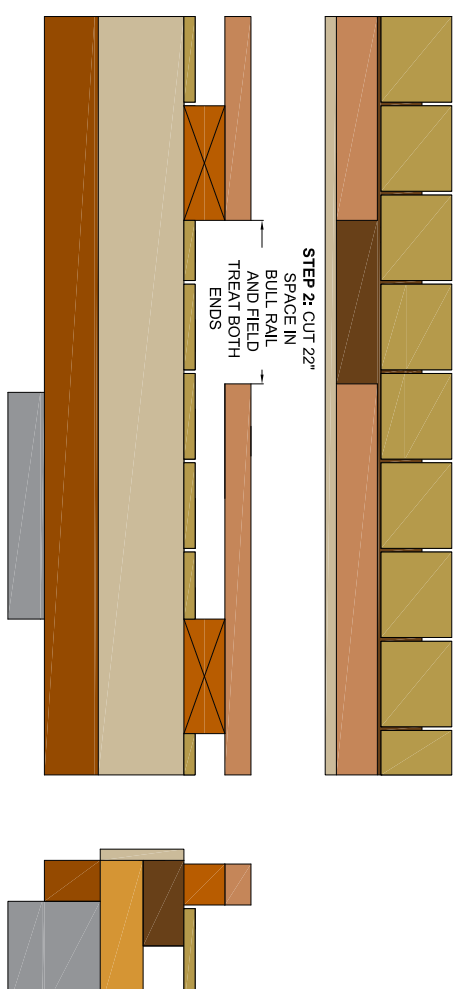


GENERAL FLOAT LADDER INSTALLATION INSTRUCTIONS

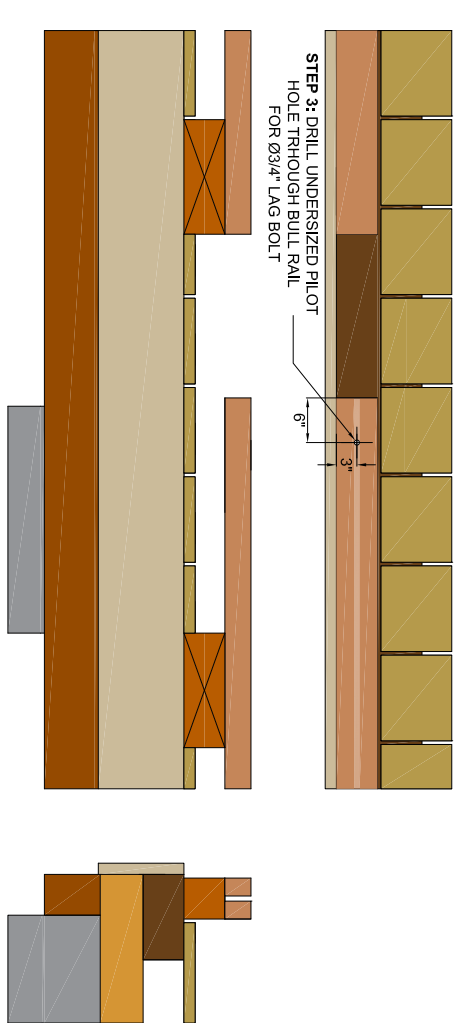
1. SITE LADDER



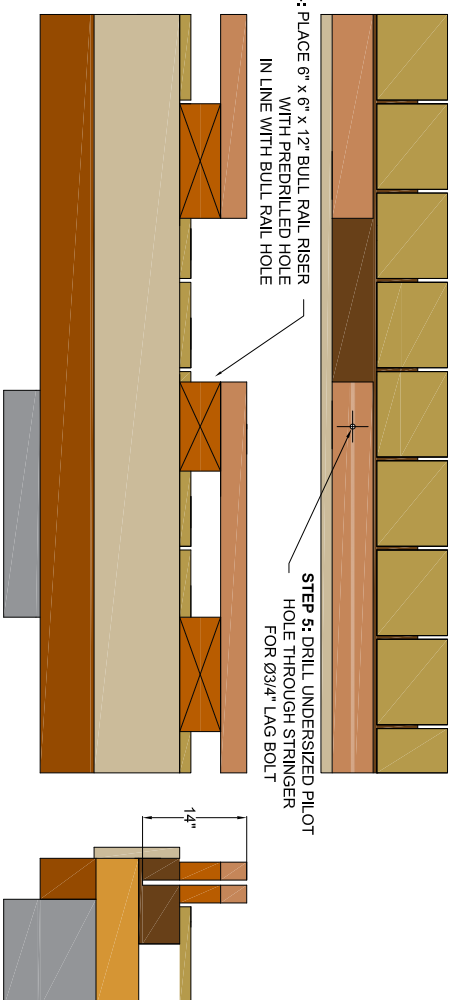
2. CUT BULL RAIL



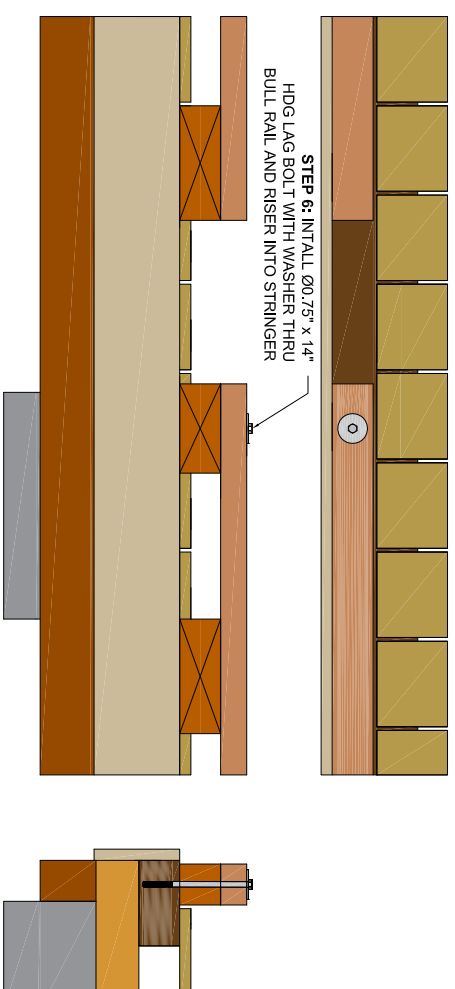
3. PLACE BULL RAIL RISER



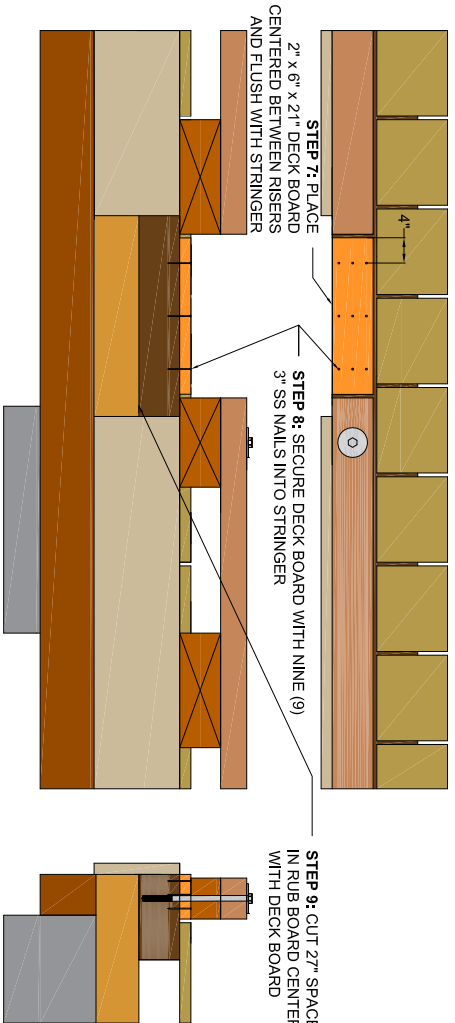
4. DRILL THROUGH FLOAT



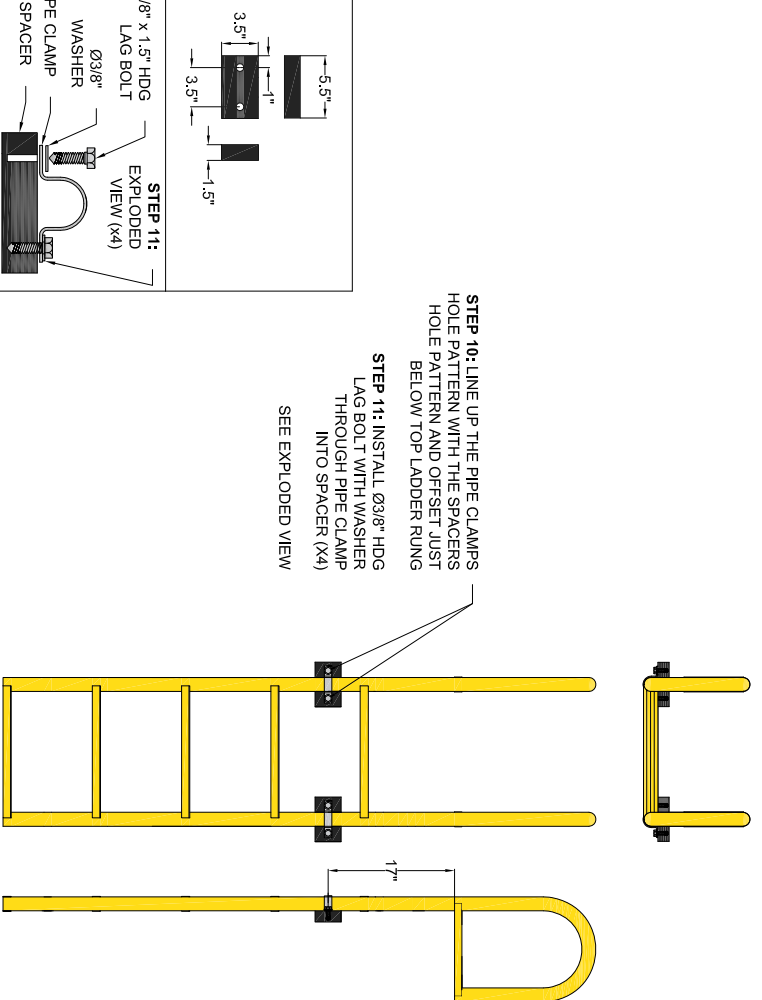
5. SECURE RISER



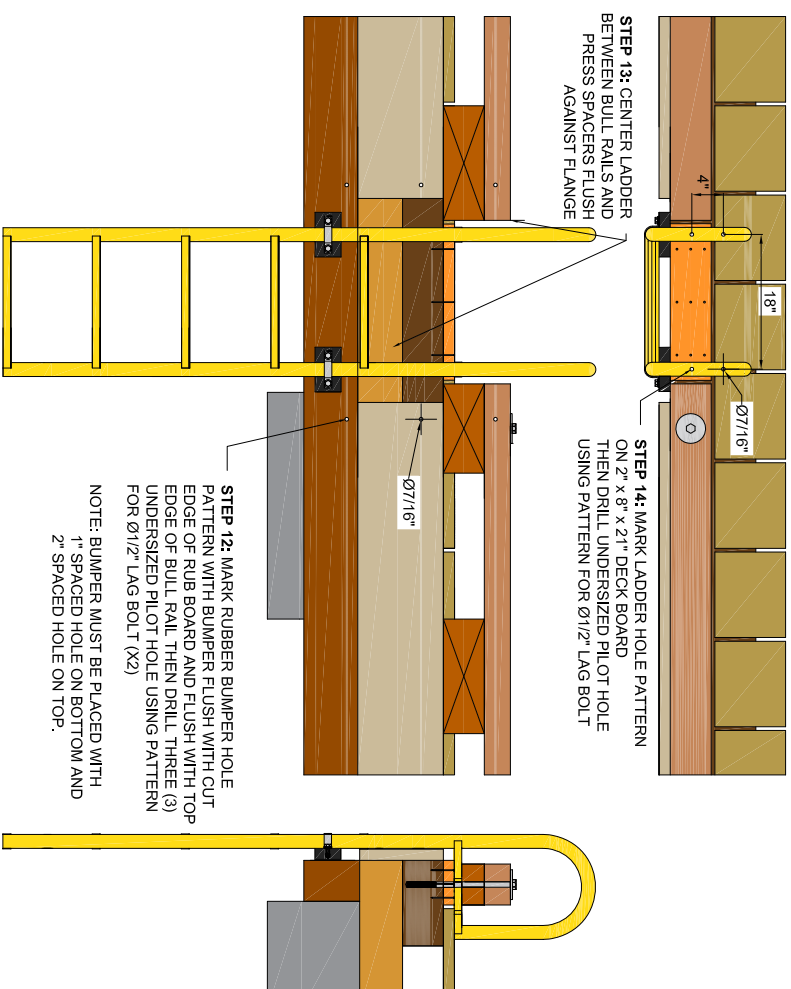
6. INSTALL DECK BOARD



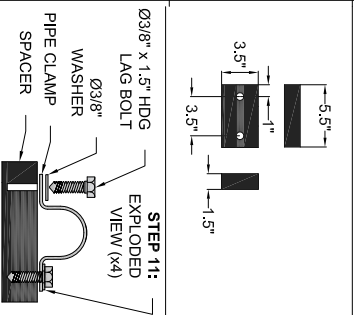
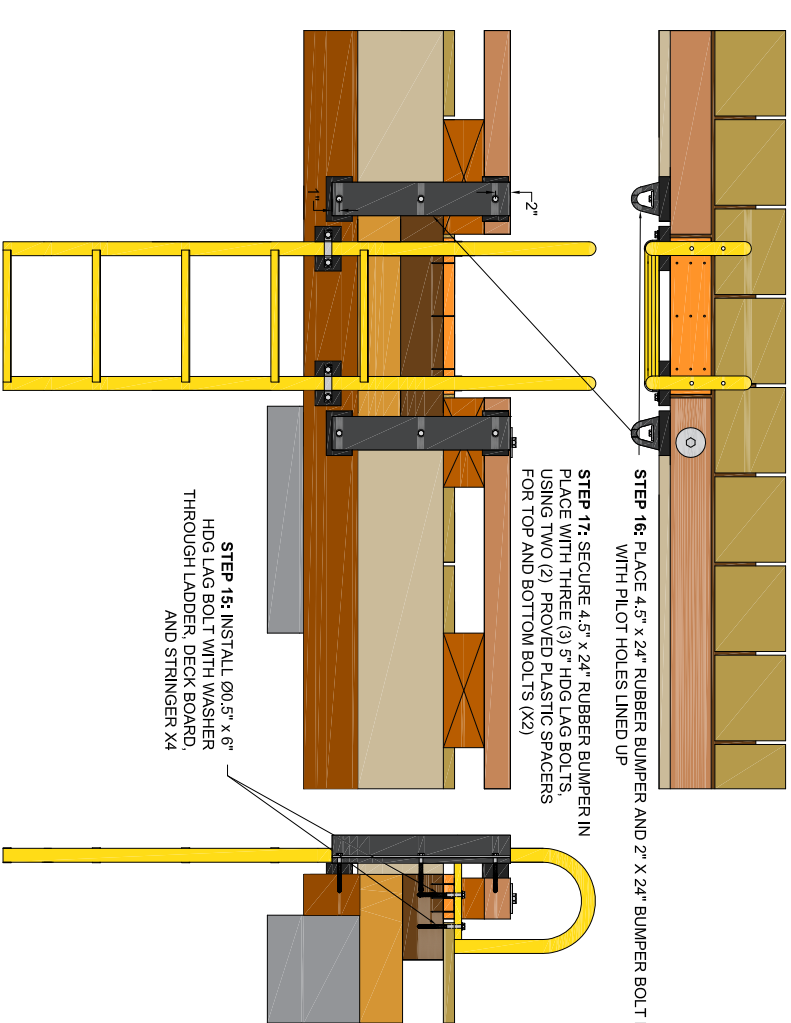
7. PREPARE LADDER



8. PLACE LADDER



9. SECURE LADDER AND ADD RUBBER BUMPER GAURDS



STEP 11: EXPLODED VIEW (X4)

STEP 10: LINE UP THE PIPE CLAMPS HOLE PATTERN WITH THE SPACERS HOLE PATTERN AND OFFSET JUST BELOW TOP LADDER RUNG

STEP 11: INSTALL Ø3/8\"/>

SEE EXPLODED VIEW

STEP 12: MARK RUBBER BUMPER HOLE PATTERN WITH RUBBER FLUSH WITH CUT EDGE OF RUB BOARD AND FLUSH WITH TOP EDGE OF BULL RAIL. THEN DRILL THREE (3) UNDERSIZED PILOT HOLE USING PATTERN FOR Ø1/2\"/>

NOTE: BUMPER MUST BE PLACED WITH 1\"/>

STEP 15: INSTALL Ø0.5\"/>

HØG LAG BOLT WITH WASHER THROUGH LADDER, DECK BOARD, AND STRINGER X4