

EXISTING ROOF COMPOSITION:

ROOF AREAS 1.1, 1.2, 3.1 & 7.1

ROOF DECK
 2 PLY FELT VAPOUR RETARDER
 4.5" POLYISOCYANURATE INSULATION
 1.5" RIGID FIBREGLASS INSULATION
 0.5" PLYWOOD
 0.5" FIBREBOARD
 2 PLY MOD. BIT. MEMBRANE

ROOF AREAS 2.1, 2.2, 4.1, 4.2, 5.1, 6.1 & 6.2

ROOF DECK
 POLY VAPOUR RETARDER
 5.0" EXTRUDED INSULATION
 0.5" PLYWOOD
 SHINGLE UNDERLAYMENT
 ASPHALT SHINGLES

NEW ROOF COMPOSITION:

ROOF AREAS 1.1, 1.2, 3.1 & 7.1

EXISTING ROOF DECK
 NEW S.A. VAPOUR RETARDER
 NEW 3.0" POLYISOCYANURATE INSULATION
 NEW TAPERED POLYISOCYANURATE INSULATION, MIN. 1.5"
 NEW 0.25" ASPHALTIC CORE BOARD
 NEW 2 PLY MOD. BIT. MEMBRANE

ROOF AREAS 2.1, 2.2, 4.1, 4.2, 5.1, 6.1 & 6.2

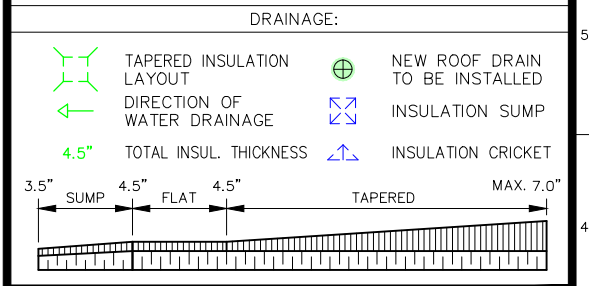
EXISTING ROOF DECK
 EXISTING POLY VAPOUR RETARDER
 EXISTING 5.0" EXTRUDED INSULATION
 EXISTING 0.5" PLYWOOD
 EXISTING SHINGLE UNDERLAYMENT
 NEW 2X4 VERTICAL WOOD STRAPPING
 NEW 0.5" PLYWOOD
 NEW SHINGLE UNDERLAYMENT
 NEW ASPHALT SHINGLES

ROOF AREA (SQ. FT.)

1.1	-	64
1.2	-	64
2.1	-	242
2.2	-	242
3.1	-	581
4.1	-	395
4.2	-	395
5.1	-	1,487
6.1	-	1,916
6.2	-	1,901
7.1	-	309
TOTAL	=	7,596 SQ. FT.

LEGEND

- ROOF PROJECTIONS:**
- ANTENNA
 - BREATHER
 - CAPPED OFF/ABANDONED STACK
 - CHANGE IN ELEV.
 - CHIMNEY
 - CONDUIT LINE
 - CONTROL JOINT
 - DRAIN
 - EXHAUST FAN ON CURB
 - EXPANSION JOINT
 - EXPLOSION HATCH
 - FLAGPOLE
 - GAS PIPELINE
 - GOOSENECK VENT
 - GOOSENECK VENT ON OVERSIZED CURB
 - HATCH
 - HVAC
 - HVAC UNIT ON CURB
 - HVAC
 - HVAC UNIT ON SLEEPERS
 - LADDER
 - LIGHT POST
 - PIPE SUPPORT
 - PITCH POCKET
 - PLUMBING OR SOIL STACK
 - RA
 - ROOF ANCHOR
 - SATELLITE DISH
 - SCUPPER
 - SECURITY CAMERA
 - SKYLIGHT
 - SLOPE
 - SQUARE VENT
 - SQUARE VENT ON OVERSIZED CURB
 - TALLCONE OR "B" VENT
 - TALLCONE OR "B" VENT ON CURB
 - UNUSED OPENING
 - WALKWAY PADS



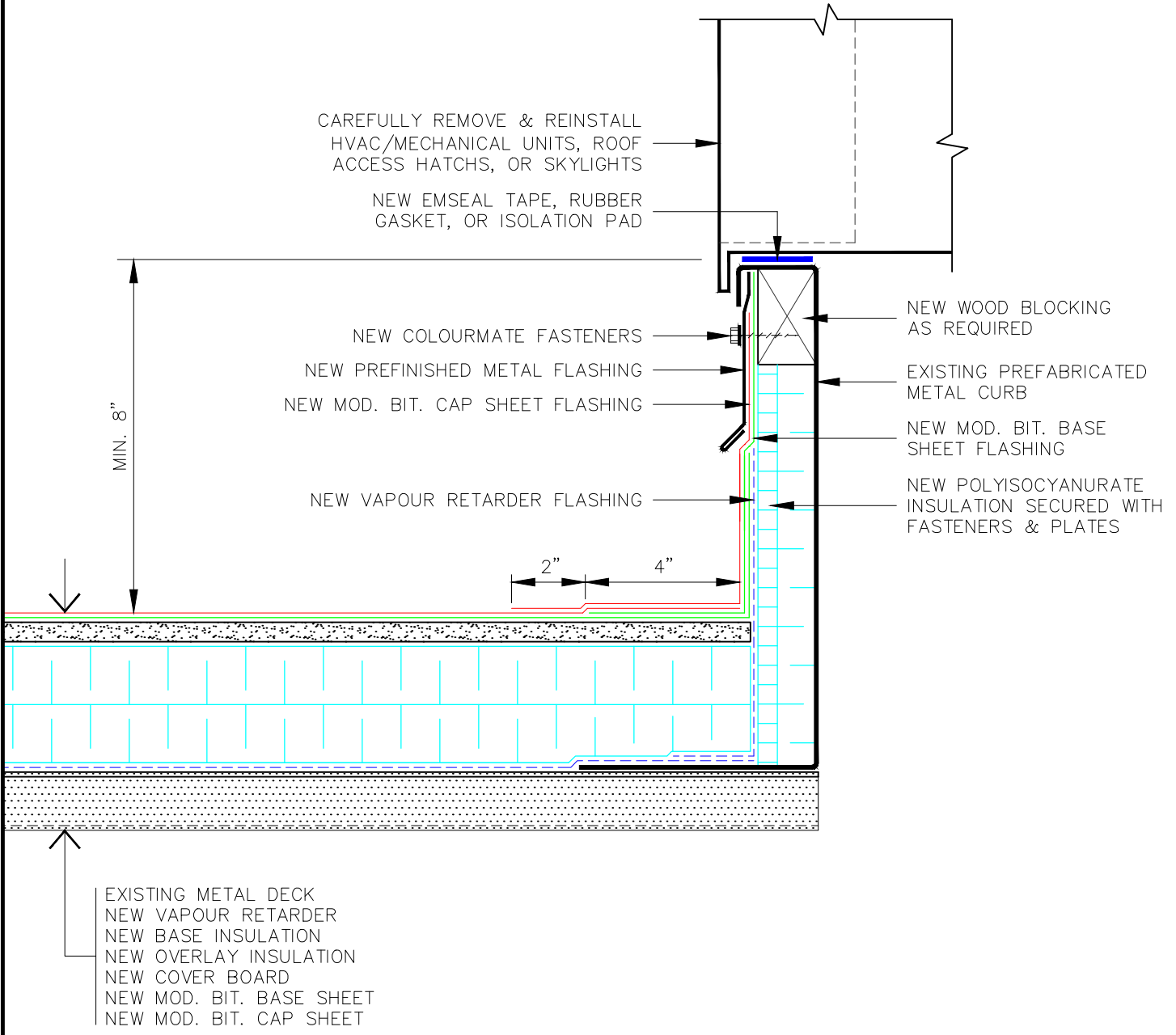
NOTE: CONTRACTOR RESPONSIBLE FOR VERIFICATION OF ALL DIMENSIONS AND MEASUREMENTS TO OWN SATISFACTION. © 2018 BY IRC GROUP INC.

irc IRC BUILDING SCIENCES GROUP
 SERVING CANADA WITH REGIONAL OFFICES FROM COAST TO COAST
 TOLL FREE: 1-888-607-5245 TEL: 905-607-7244
 WWW.IRCGROUP.COM FAX: 905-607-7288


TITLE: PARTIAL ROOF PLAN	
CLIENT: CORRECTIONAL SERV. CANADA	
PROJECT: GRAND VALLEY INSTITUTION PROJECT NO. R.456-2603-0 1575 HOMER WATSON BLVD. KITCHENER, ON	
IRC #: 20532	PROJECT NORTH:
W.O.#: LR18-002SP	
SCALE: 3/32" = 1'-0"	
DATE: APRIL 6/18	DWG.#:
DRN. BY: M.M.	R1
CHK. BY: M.H./J.C.	

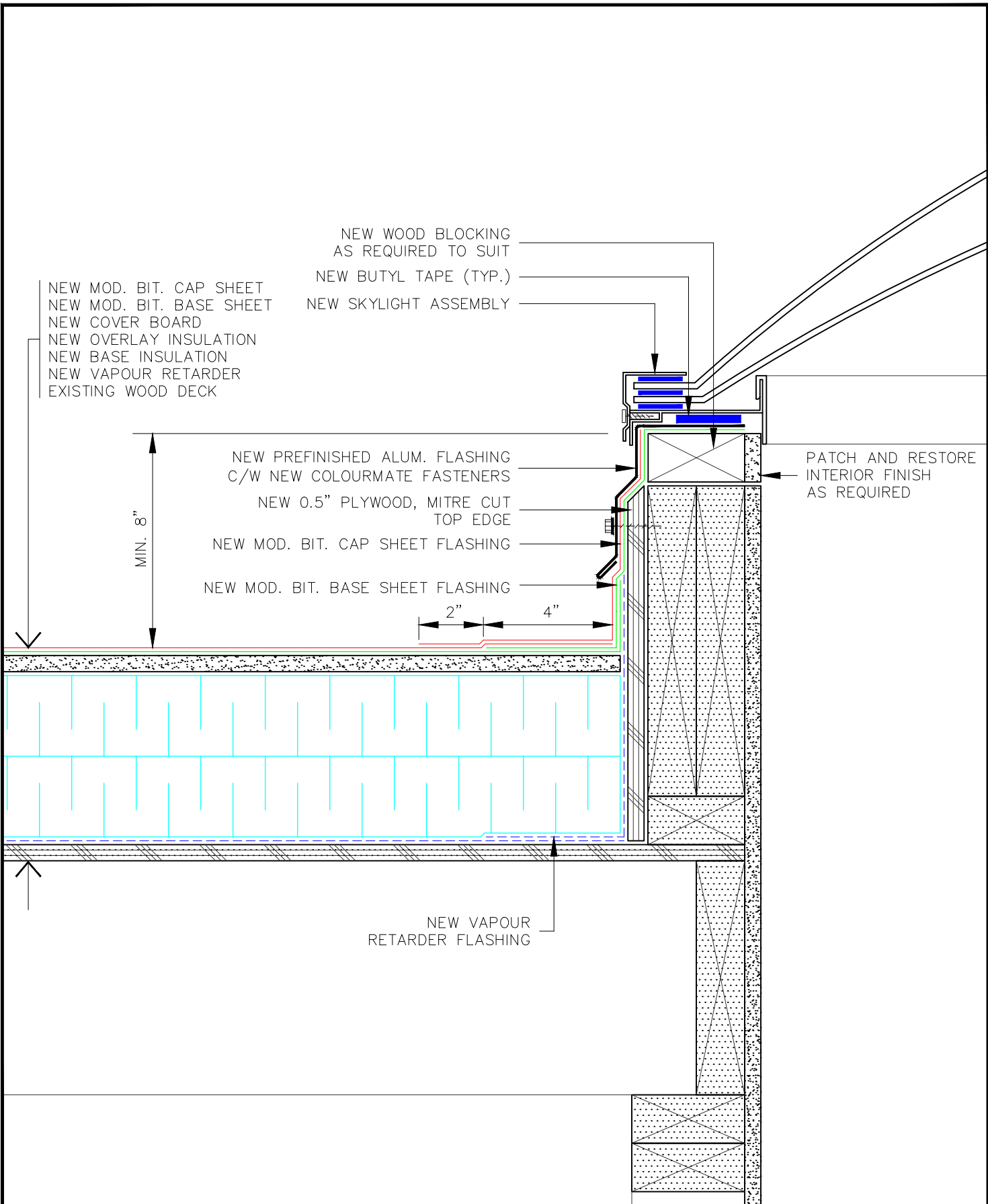
NOTE 1: EXISTING RADIO ANTENNA TO REMAIN OPERATIONAL DURING CONSTRUCTION

M:\PROJECTS\20532-20750\20532-1575 HOMER WATSON BLVD. KITCHENER\LR18-002SP_FLAT ROOF REPAIRS\04_CAD\02_WORKING\RC-20532_LR18-002SP_1575 HOMER WATSON BLVD.DWG



EXISTING METAL DECK
 NEW VAPOUR RETARDER
 NEW BASE INSULATION
 NEW OVERLAY INSULATION
 NEW COVER BOARD
 NEW MOD. BIT. BASE SHEET
 NEW MOD. BIT. CAP SHEET

	TITLE: PREFABRICATED CURB	REVISED:	SCALE: 3" = 1'-0"
	NOTE: NO REPRODUCTION OR USE OF THIS DRAWING IS AUTHORIZED WITHOUT EXPRESSED WRITTEN CONSENT © COPYRIGHT 2018 IRC BUILDING SCIENCES GROUP INC.	REV'N.#:	DATE: 2 APRIL 2018
		DRN. BY: J.L./M.M.	DWG.#: CMM507
		CHK. BY: M.H./J.C.	



TITLE: SKYLIGHT CURB DETAIL

NOTE: NO REPRODUCTION OR USE OF THIS DRAWING IS AUTHORIZED WITHOUT EXPRESSED WRITTEN CONSENT ©COPYRIGHT 2018 IRC BUILDING SCIENCES GROUP INC.

REVISED:

REV'N.#:

DRN. BY: J.L./M.M.

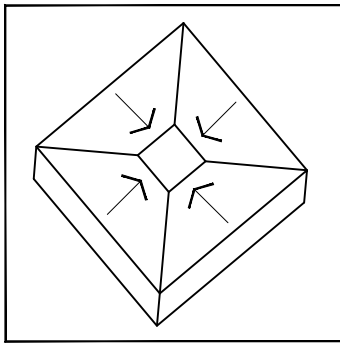
CHK. BY: M.H./J.C.

SCALE: 3" = 1'-0"

DATE: 30 MAR. 2018

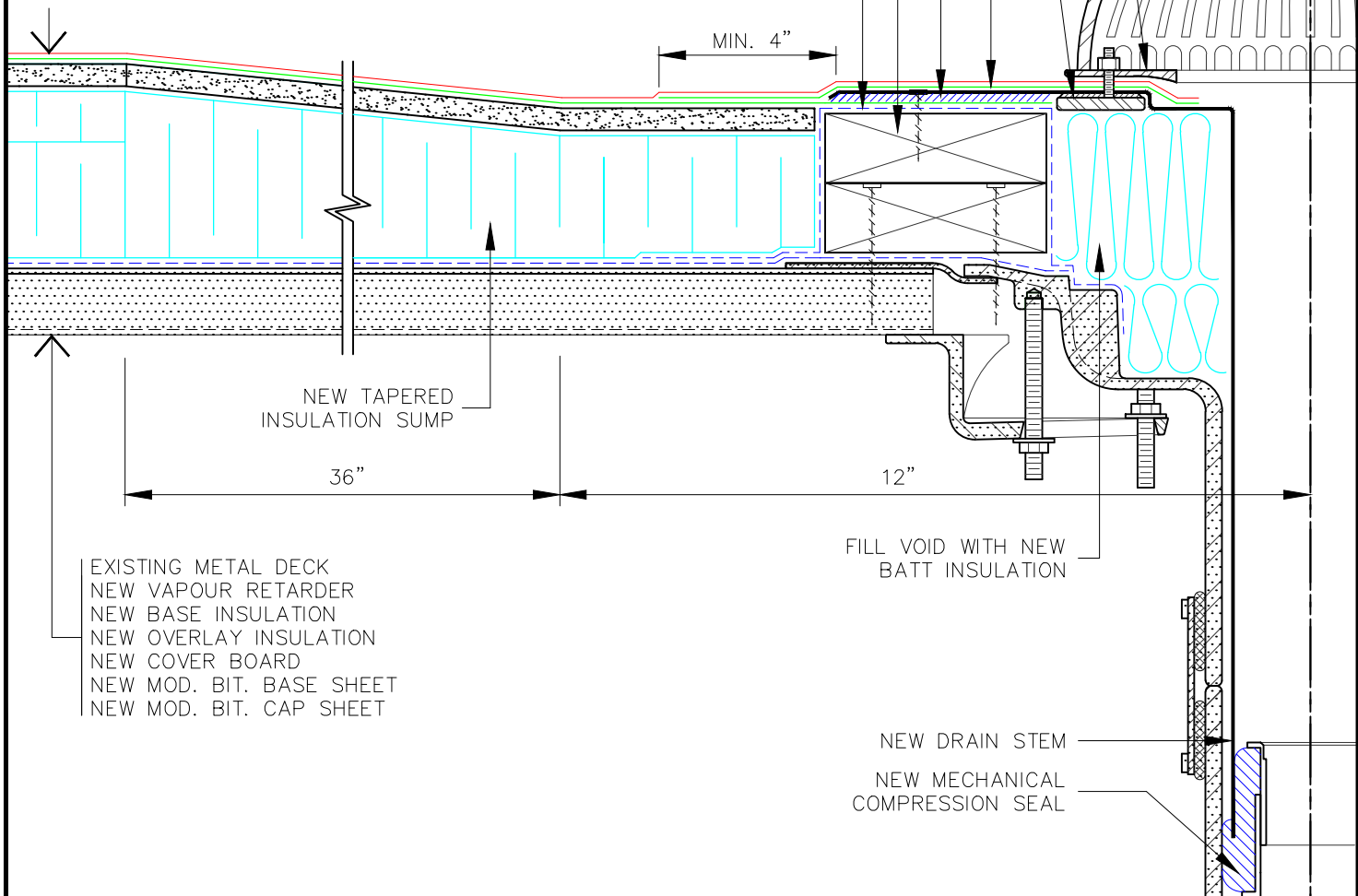
DWG.#: CMM965

M:\Details\DM\1001-1500\DM\10220-RR-MD-ISO-DD-Retro.dwg



SUMP DIAGRAM

- CAST ALUMINUM DOME WITH HINGED ACCESS GATE
- NEW THALER "RD-4C-RR-FLAT" DRAIN INSERT
- STAINLESS STEEL VANDAL PROOF RETAINING SCREW
- CAST ALUMINUM CLAMPING RING
- BRONZE STABILIZER RING WITH WELDED STAINLESS STEEL BOLTS
- NEW MOD. BIT. BASE SHEET FLASHING
- SET PRIMED DRAIN FLANGE IN LAYER OF SEALANT
- NEW WOOD BLOCKING TO SUIT
- NEW VAPOUR RETARDER FLASHING



- EXISTING METAL DECK
- NEW VAPOUR RETARDER
- NEW BASE INSULATION
- NEW OVERLAY INSULATION
- NEW COVER BOARD
- NEW MOD. BIT. BASE SHEET
- NEW MOD. BIT. CAP SHEET

FILL VOID WITH NEW BATT INSULATION

NEW DRAIN STEM
NEW MECHANICAL COMPRESSION SEAL

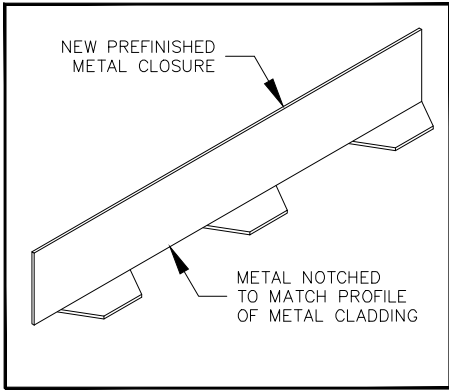


TITLE: **RETRO DRAIN FLASHING DETAIL**

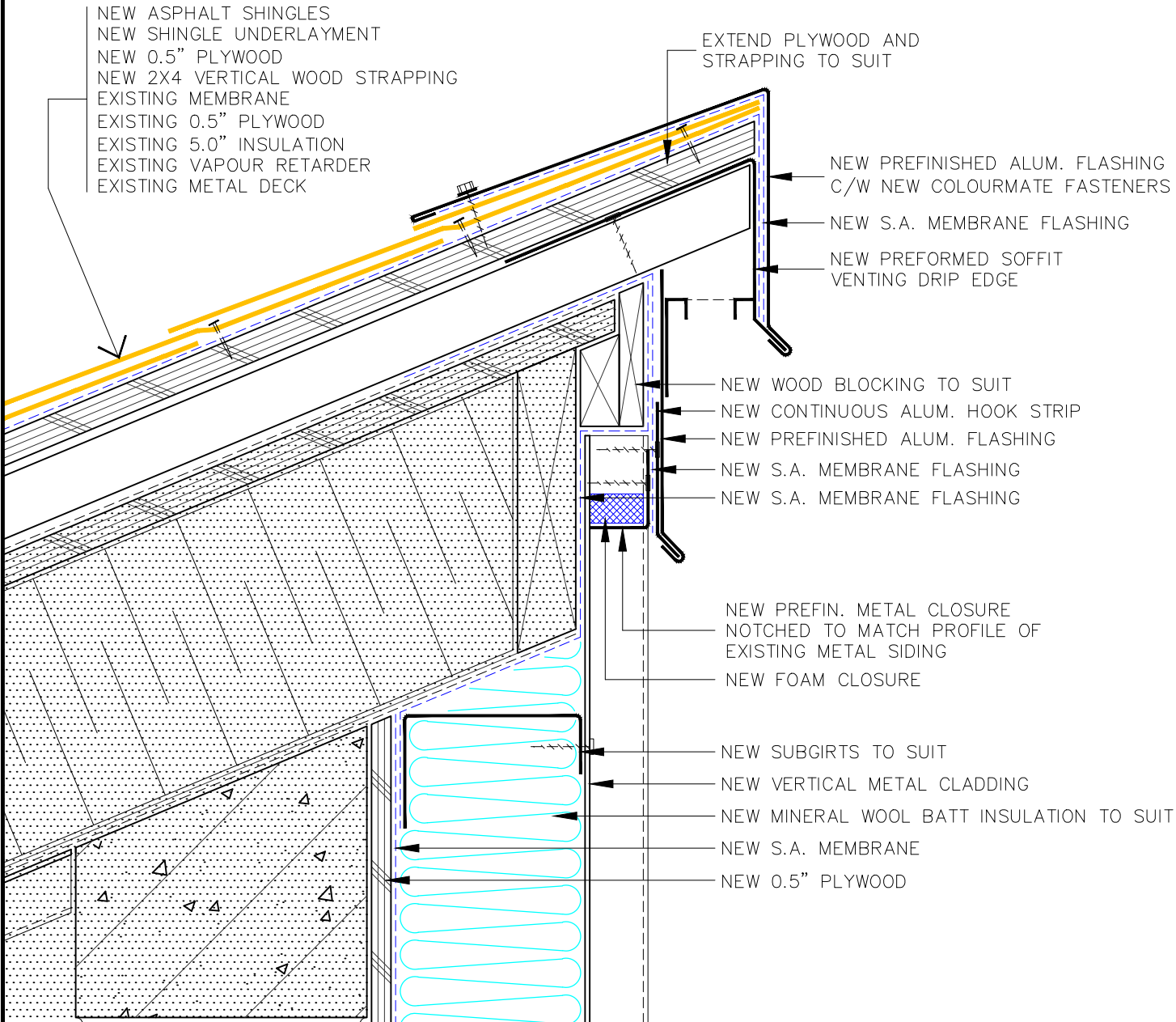
NOTE: NO REPRODUCTION OR USE OF THIS DRAWING IS AUTHORIZED WITHOUT EXPRESSED WRITTEN CONSENT
© COPYRIGHT 2018 IRC BUILDING SCIENCES GROUP INC.

REVISED:
REV'N.#:
DRN. BY: J.L./M.M.
CHK. BY: M.H./J.C.

SCALE: 3" = 1'-0"
DATE: 30 MAR. 2018
DWG.#: DMM220



METAL CLOSURE
N.T.S.



- NEW ASPHALT SHINGLES
- NEW SHINGLE UNDERLAYMENT
- NEW 0.5" PLYWOOD
- NEW 2X4 VERTICAL WOOD STRAPPING
- EXISTING MEMBRANE
- EXISTING 0.5" PLYWOOD
- EXISTING 5.0" INSULATION
- EXISTING VAPOUR RETARDER
- EXISTING METAL DECK

EXTEND PLYWOOD AND STRAPPING TO SUIT

- NEW PREFINISHED ALUM. FLASHING C/W NEW COLOURMATE FASTENERS
- NEW S.A. MEMBRANE FLASHING
- NEW PREFORMED SOFFIT VENTING DRIP EDGE

- NEW WOOD BLOCKING TO SUIT
- NEW CONTINUOUS ALUM. HOOK STRIP
- NEW PREFINISHED ALUM. FLASHING
- NEW S.A. MEMBRANE FLASHING
- NEW S.A. MEMBRANE FLASHING

- NEW PREFIN. METAL CLOSURE NOTCHED TO MATCH PROFILE OF EXISTING METAL SIDING
- NEW FOAM CLOSURE

- NEW SUBGIRTS TO SUIT
- NEW VERTICAL METAL CLADDING
- NEW MINERAL WOOL BATT INSULATION TO SUIT
- NEW S.A. MEMBRANE
- NEW 0.5" PLYWOOD



TITLE: DRIP EDGE FLASHING DETAIL

NOTE: NO REPRODUCTION OR USE OF THIS DRAWING IS AUTHORIZED WITHOUT EXPRESSED WRITTEN CONSENT ©COPYRIGHT 2018 IRC BUILDING SCIENCES GROUP INC.

REVISED:

REV'N.#:

DRN. BY:

CHK. BY:

M.M.

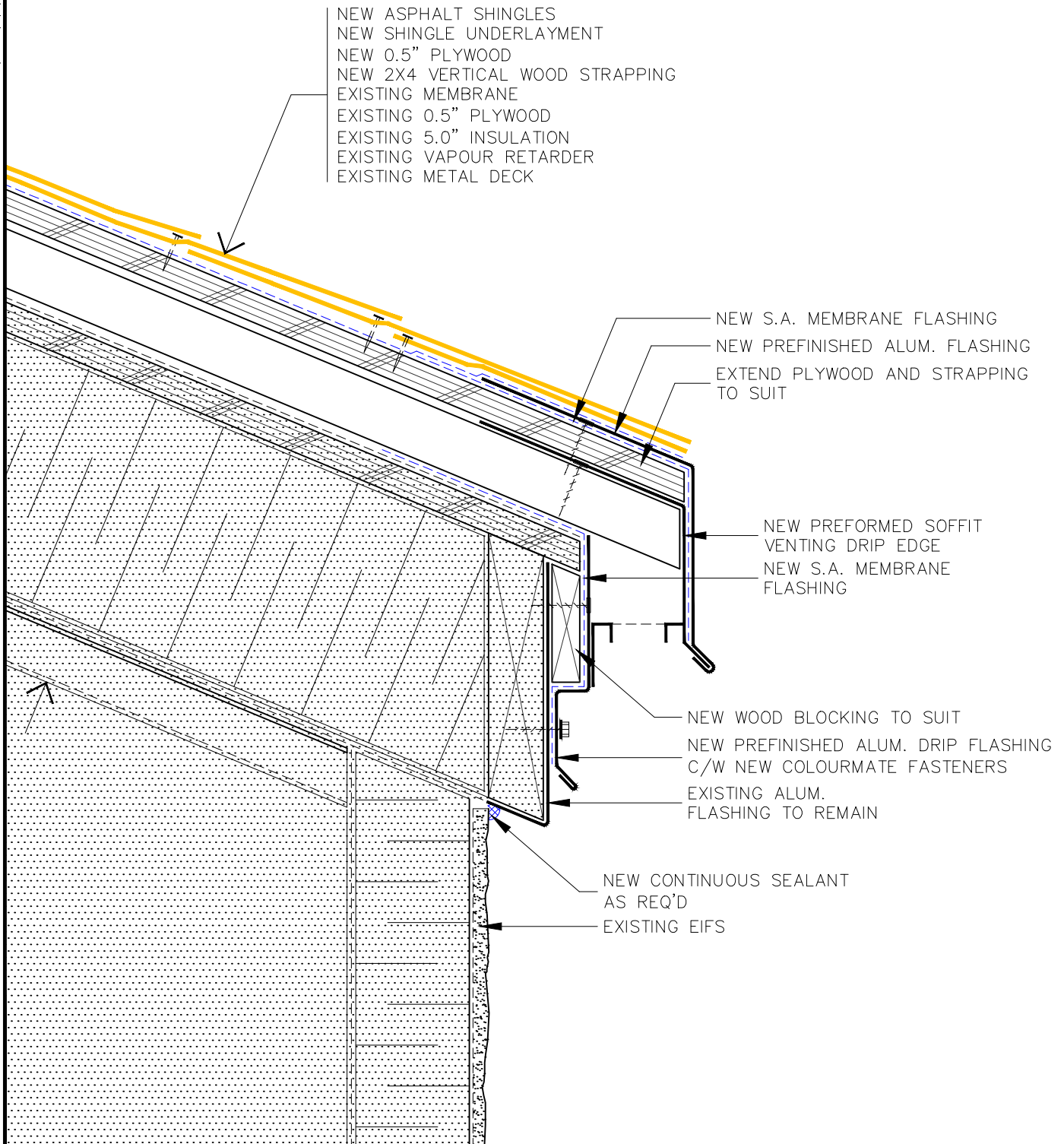
M.H./J.C.

SCALE: 3" = 1'-0"

DATE: 6 APRIL 2018

DWG.#:

HSU144



NEW ASPHALT SHINGLES
 NEW SHINGLE UNDERLAYMENT
 NEW 0.5" PLYWOOD
 NEW 2X4 VERTICAL WOOD STRAPPING
 EXISTING MEMBRANE
 EXISTING 0.5" PLYWOOD
 EXISTING 5.0" INSULATION
 EXISTING VAPOUR RETARDER
 EXISTING METAL DECK

NEW S.A. MEMBRANE FLASHING
 NEW PREFINISHED ALUM. FLASHING
 EXTEND PLYWOOD AND STRAPPING TO SUIT

NEW PREFORMED SOFFIT VENTING DRIP EDGE
 NEW S.A. MEMBRANE FLASHING

NEW WOOD BLOCKING TO SUIT
 NEW PREFINISHED ALUM. DRIP FLASHING C/W NEW COLOURMATE FASTENERS
 EXISTING ALUM. FLASHING TO REMAIN

NEW CONTINUOUS SEALANT AS REQ'D
 EXISTING EIFS

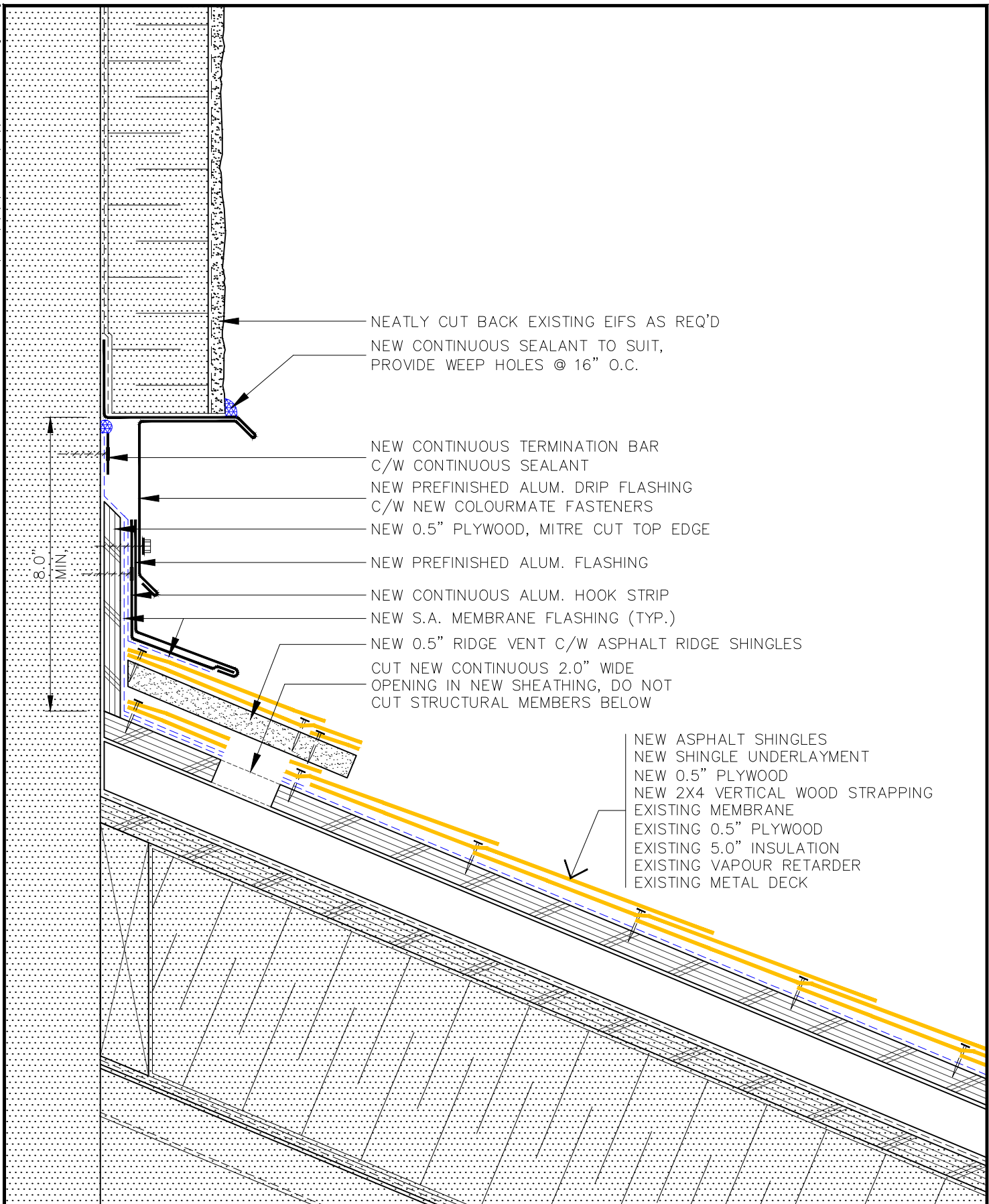


TITLE: DRIP EDGE FLASHING DETAIL

NOTE: NO REPRODUCTION OR USE OF THIS DRAWING IS AUTHORIZED WITHOUT EXPRESSED WRITTEN CONSENT ©COPYRIGHT 2018 IRC BUILDING SCIENCES GROUP INC.

REVISED:
 REV'N.#:
 DRN. BY: M.M.
 CHK. BY: M.H./J.C.

SCALE: 3" = 1'-0"
 DATE: 2 APRIL 2018
 DWG.#: HSU145



NEATLY CUT BACK EXISTING EIFS AS REQ'D
 NEW CONTINUOUS SEALANT TO SUIT,
 PROVIDE WEEP HOLES @ 16" O.C.

NEW CONTINUOUS TERMINATION BAR
 C/W CONTINUOUS SEALANT
 NEW PREFINISHED ALUM. DRIP FLASHING
 C/W NEW COLOURMATE FASTENERS
 NEW 0.5" PLYWOOD, MITRE CUT TOP EDGE
 NEW PREFINISHED ALUM. FLASHING
 NEW CONTINUOUS ALUM. HOOK STRIP
 NEW S.A. MEMBRANE FLASHING (TYP.)
 NEW 0.5" RIDGE VENT C/W ASPHALT RIDGE SHINGLES
 CUT NEW CONTINUOUS 2.0" WIDE
 OPENING IN NEW SHEATHING, DO NOT
 CUT STRUCTURAL MEMBERS BELOW

NEW ASPHALT SHINGLES
 NEW SHINGLE UNDERLAYMENT
 NEW 0.5" PLYWOOD
 NEW 2X4 VERTICAL WOOD STRAPPING
 EXISTING MEMBRANE
 EXISTING 0.5" PLYWOOD
 EXISTING 5.0" INSULATION
 EXISTING VAPOUR RETARDER
 EXISTING METAL DECK

8.0
 MIN



TITLE: HIGHWALL DETAIL

NOTE: NO REPRODUCTION OR USE OF THIS DRAWING IS
 AUTHORIZED WITHOUT EXPRESSED WRITTEN CONSENT
 ©COPYRIGHT 2018 IRC BUILDING SCIENCES GROUP INC.

REVISED:

REV'N.#:

DRN. BY: M.M.

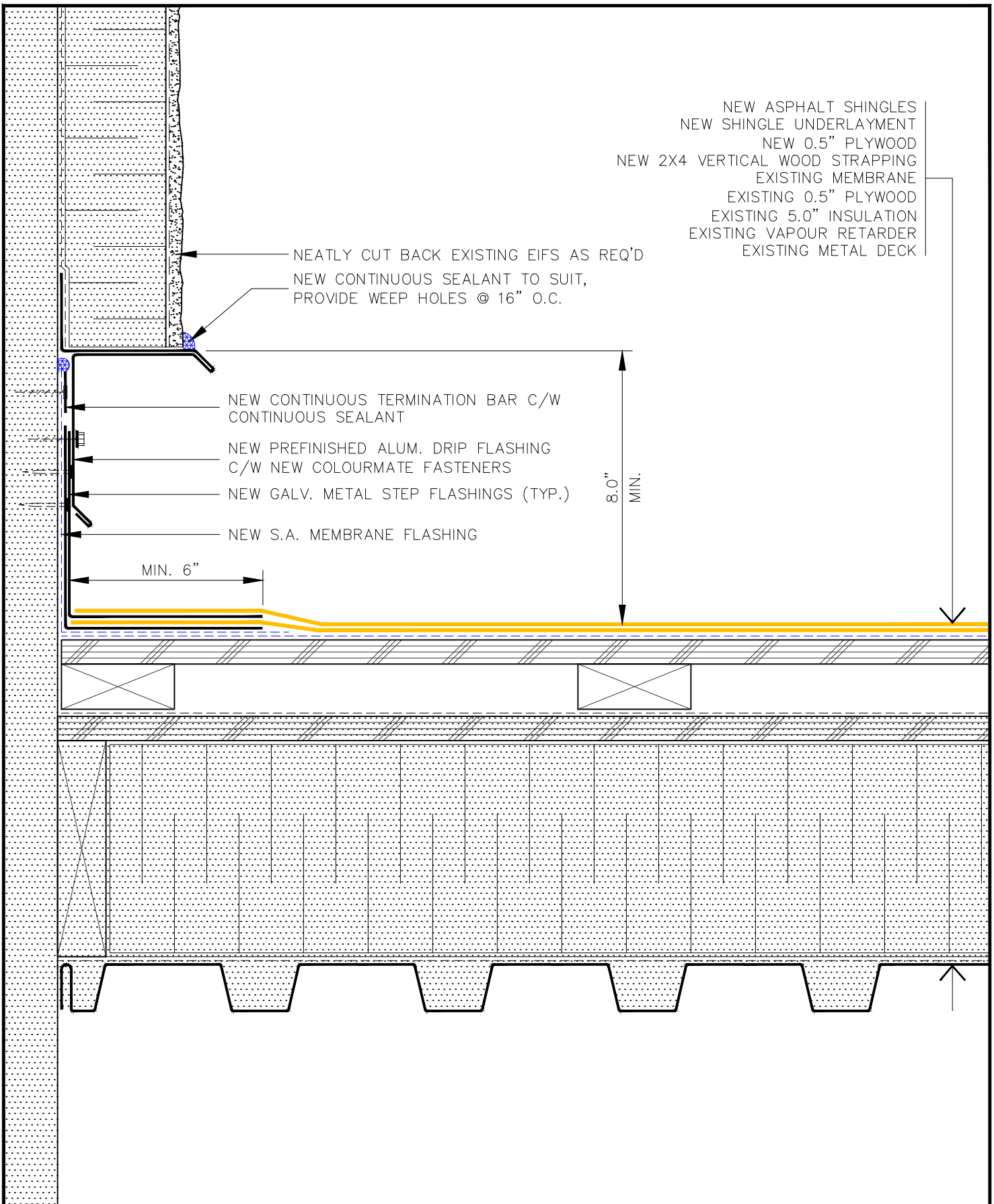
CHK. BY: M.H./J.C.

SCALE: 3" = 1'-0"

DATE: 2 APRIL 2018

DWG.#: HSU146

M:\Details\HSU\1001-1500\HSU(1)147-RR-WD-PW-StepFlashing.dwg




NEW ASPHALT SHINGLES
 NEW SHINGLE UNDERLAYMENT
 NEW 0.5" PLYWOOD
 NEW 2X4 VERTICAL WOOD STRAPPING
 EXISTING MEMBRANE
 EXISTING 0.5" PLYWOOD
 EXISTING 5.0" INSULATION
 EXISTING VAPOUR RETARDER
 EXISTING METAL DECK

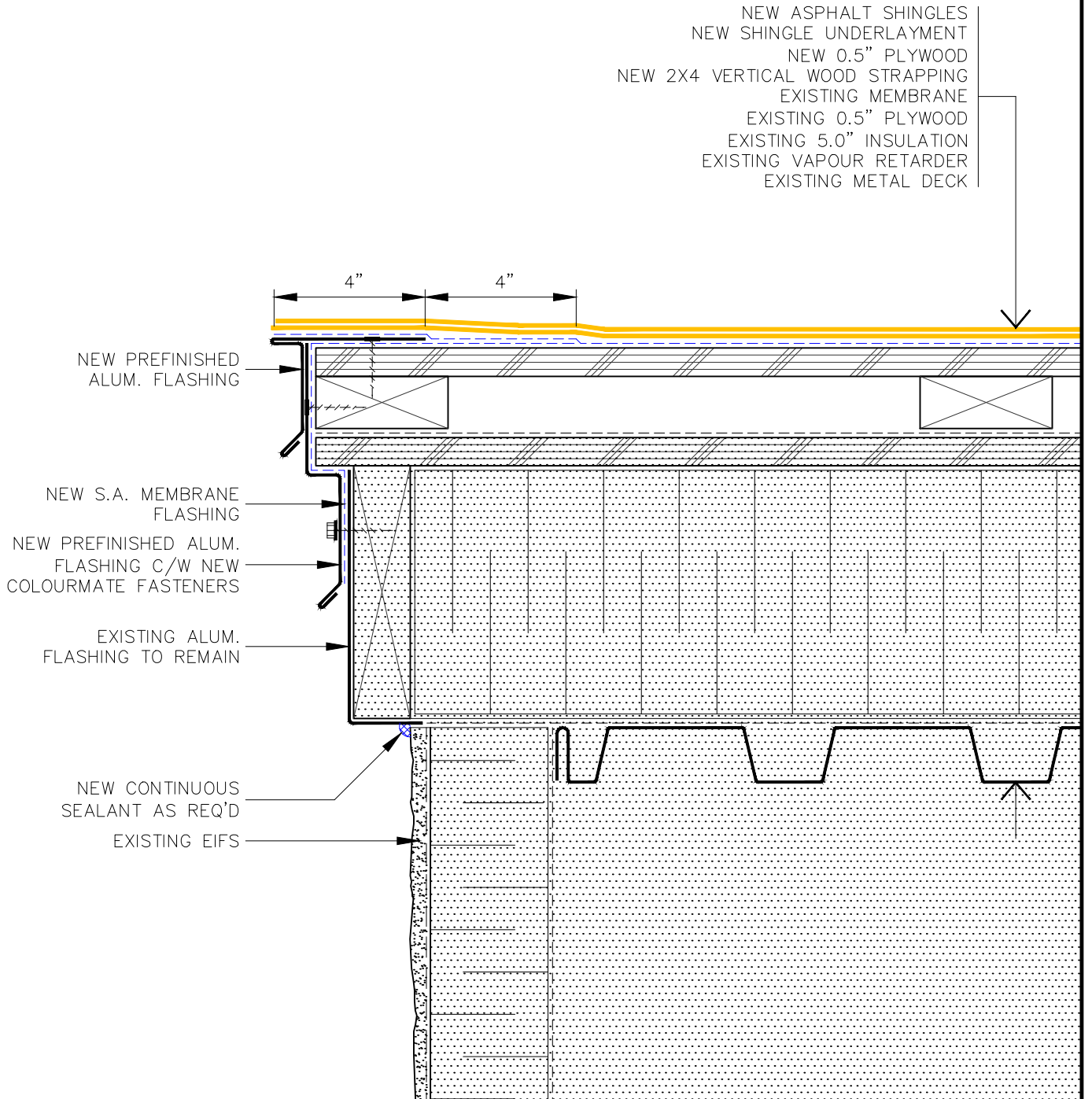
NEATLY CUT BACK EXISTING EIFS AS REQ'D
 NEW CONTINUOUS SEALANT TO SUIT,
 PROVIDE WEEP HOLES @ 16" O.C.

NEW CONTINUOUS TERMINATION BAR C/W
 CONTINUOUS SEALANT
 NEW PREFINISHED ALUM. DRIP FLASHING
 C/W NEW COLOURMATE FASTENERS
 NEW GALV. METAL STEP FLASHINGS (TYP.)
 NEW S.A. MEMBRANE FLASHING

MIN. 6"

8.0"
 MIN.

	TITLE: TYP. STEP FLASHING DETAIL	REVISED:	SCALE: 3" = 1'-0"
	NOTE: NO REPRODUCTION OR USE OF THIS DRAWING IS AUTHORIZED WITHOUT EXPRESSED WRITTEN CONSENT © COPYRIGHT 2018 IRC BUILDING SCIENCES GROUP INC.	REV'N.#:	DATE: 2 APRIL 2018
		DRN. BY: M.M.	DWG.#: HSU147
		CHK. BY: M.H./J.C.	



TITLE: RAKE EDGE DETAIL

REVISED:

SCALE: 3" = 1'-0"

REV'N.#:

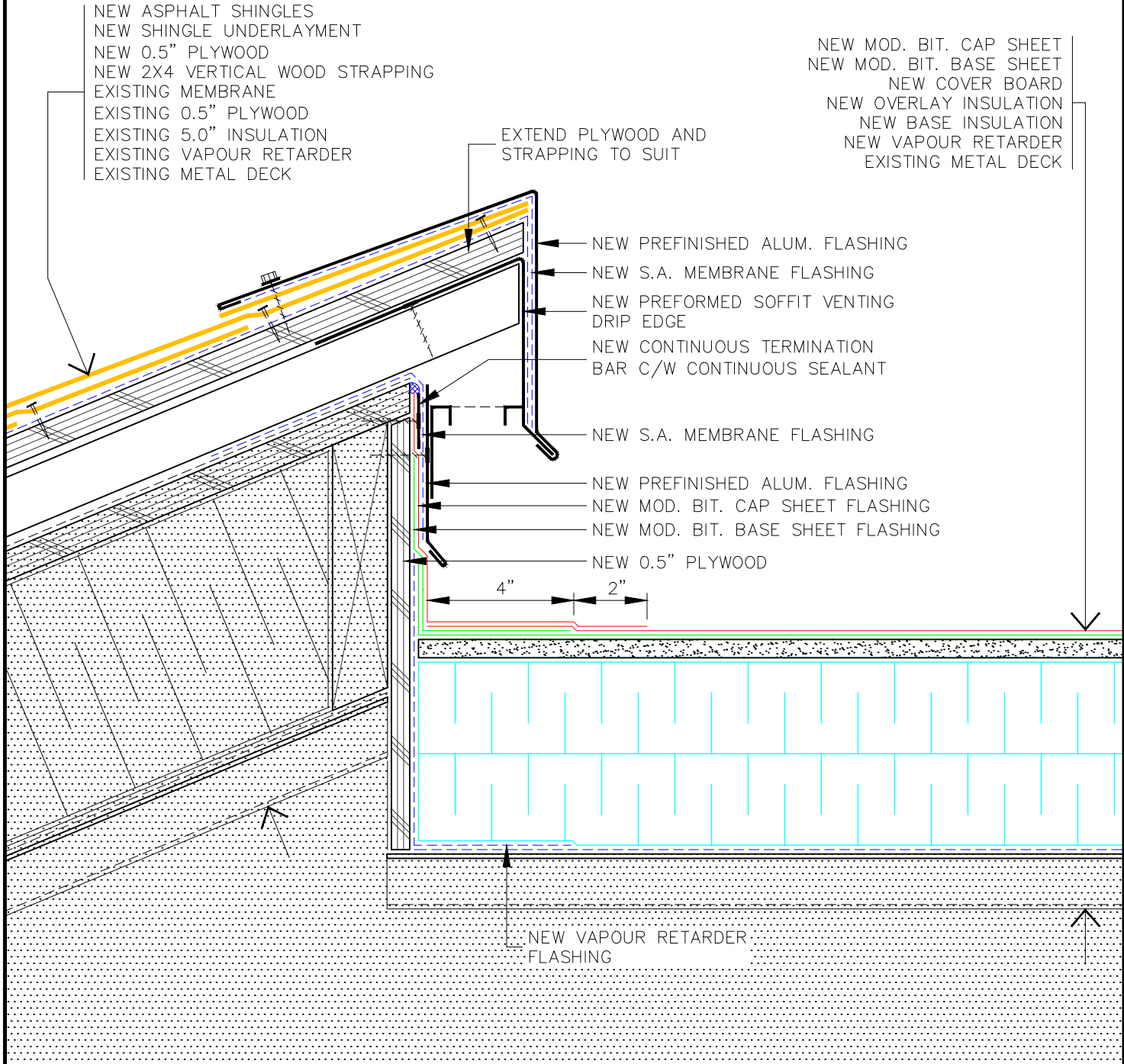
DATE: 2 APRIL 2018

NOTE: NO REPRODUCTION OR USE OF THIS DRAWING IS AUTHORIZED WITHOUT EXPRESSED WRITTEN CONSENT ©COPYRIGHT 2018 IRC BUILDING SCIENCES GROUP INC.

DRN. BY: M.M.

DWG.#: HSU148

CHK. BY: M.H./J.C.



NEW ASPHALT SHINGLES
 NEW SHINGLE UNDERLAYMENT
 NEW 0.5" PLYWOOD
 NEW 2X4 VERTICAL WOOD STRAPPING
 EXISTING MEMBRANE
 EXISTING 0.5" PLYWOOD
 EXISTING 5.0" INSULATION
 EXISTING VAPOUR RETARDER
 EXISTING METAL DECK

NEW MOD. BIT. CAP SHEET
 NEW MOD. BIT. BASE SHEET
 NEW COVER BOARD
 NEW OVERLAY INSULATION
 NEW BASE INSULATION
 NEW VAPOUR RETARDER
 EXISTING METAL DECK

EXTEND PLYWOOD AND STRAPPING TO SUIT

NEW PREFINISHED ALUM. FLASHING
 NEW S.A. MEMBRANE FLASHING
 NEW PREFORMED SOFFIT VENTING DRIP EDGE
 NEW CONTINUOUS TERMINATION BAR C/W CONTINUOUS SEALANT
 NEW S.A. MEMBRANE FLASHING
 NEW PREFINISHED ALUM. FLASHING
 NEW MOD. BIT. CAP SHEET FLASHING
 NEW MOD. BIT. BASE SHEET FLASHING
 NEW 0.5" PLYWOOD

4" 2"

NEW VAPOUR RETARDER FLASHING

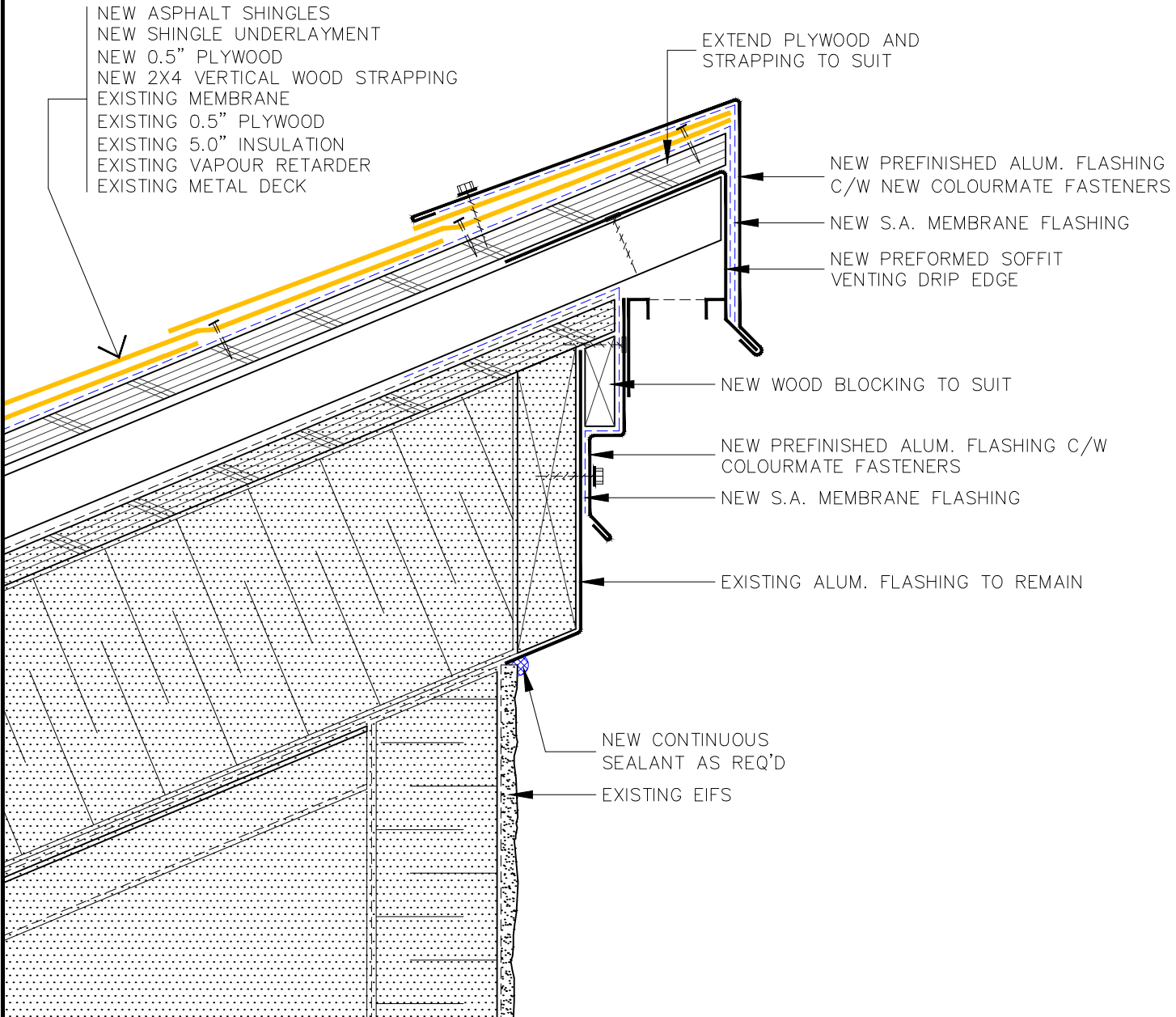


TITLE: SLOPED TO FLAT ROOF TRANSITION

NOTE: NO REPRODUCTION OR USE OF THIS DRAWING IS AUTHORIZED WITHOUT EXPRESSED WRITTEN CONSENT ©COPYRIGHT 2018 IRC BUILDING SCIENCES GROUP INC.

REVISED:
 REV'N.#:
 DRN. BY: M.M.
 CHK. BY: M.H./J.C.

SCALE: 3" = 1'-0"
 DATE: 2 APRIL 2018
 DWG.#: HSU149



NEW ASPHALT SHINGLES
 NEW SHINGLE UNDERLAYMENT
 NEW 0.5" PLYWOOD
 NEW 2X4 VERTICAL WOOD STRAPPING
 EXISTING MEMBRANE
 EXISTING 0.5" PLYWOOD
 EXISTING 5.0" INSULATION
 EXISTING VAPOUR RETARDER
 EXISTING METAL DECK

EXTEND PLYWOOD AND STRAPPING TO SUIT

NEW PREFINISHED ALUM. FLASHING
 C/W NEW COLOURMATE FASTENERS
 NEW S.A. MEMBRANE FLASHING
 NEW PREFORMED SOFFIT
 VENTING DRIP EDGE

NEW WOOD BLOCKING TO SUIT

NEW PREFINISHED ALUM. FLASHING C/W
 COLOURMATE FASTENERS
 NEW S.A. MEMBRANE FLASHING

EXISTING ALUM. FLASHING TO REMAIN

NEW CONTINUOUS
 SEALANT AS REQ'D
 EXISTING EIFS



TITLE: DRIP EDGE FLASHING DETAIL

NOTE: NO REPRODUCTION OR USE OF THIS DRAWING IS
 AUTHORIZED WITHOUT EXPRESSED WRITTEN CONSENT
 ©COPYRIGHT 2018 IRC BUILDING SCIENCES GROUP INC.

REVISED:

REV'N.#:

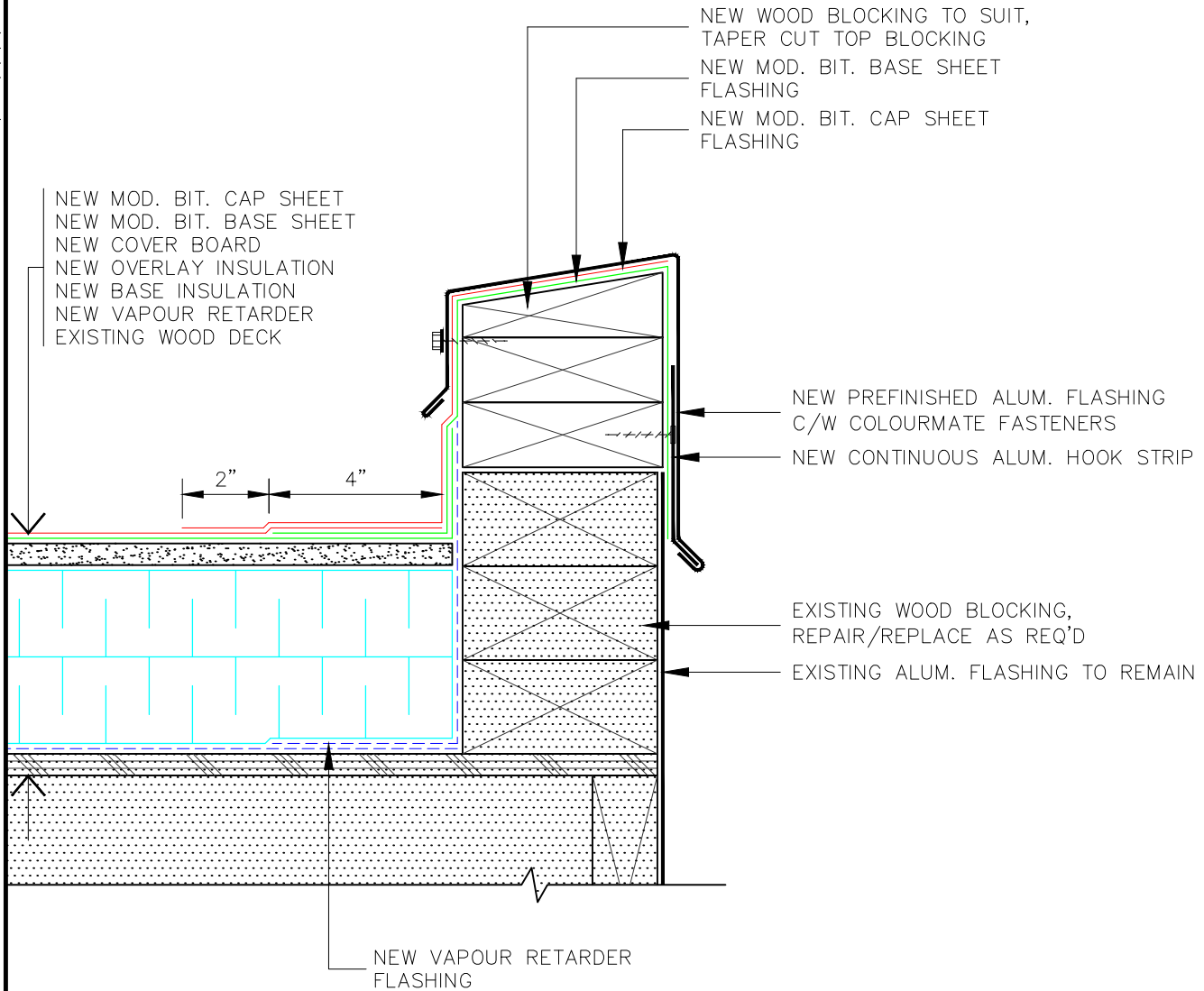
DRN. BY: M.M.

CHK. BY: M.H./J.C.

SCALE: 3" = 1'-0"

DATE: 6 APRIL 2018

DWG.#: HSU150



TITLE: PARAPET DETAIL

NOTE: NO REPRODUCTION OR USE OF THIS DRAWING IS AUTHORIZED WITHOUT EXPRESSED WRITTEN CONSENT
© COPYRIGHT 2018 IRC BUILDING SCIENCES GROUP INC.

REVISED:

REV'N.#:

DRN. BY: M.M.

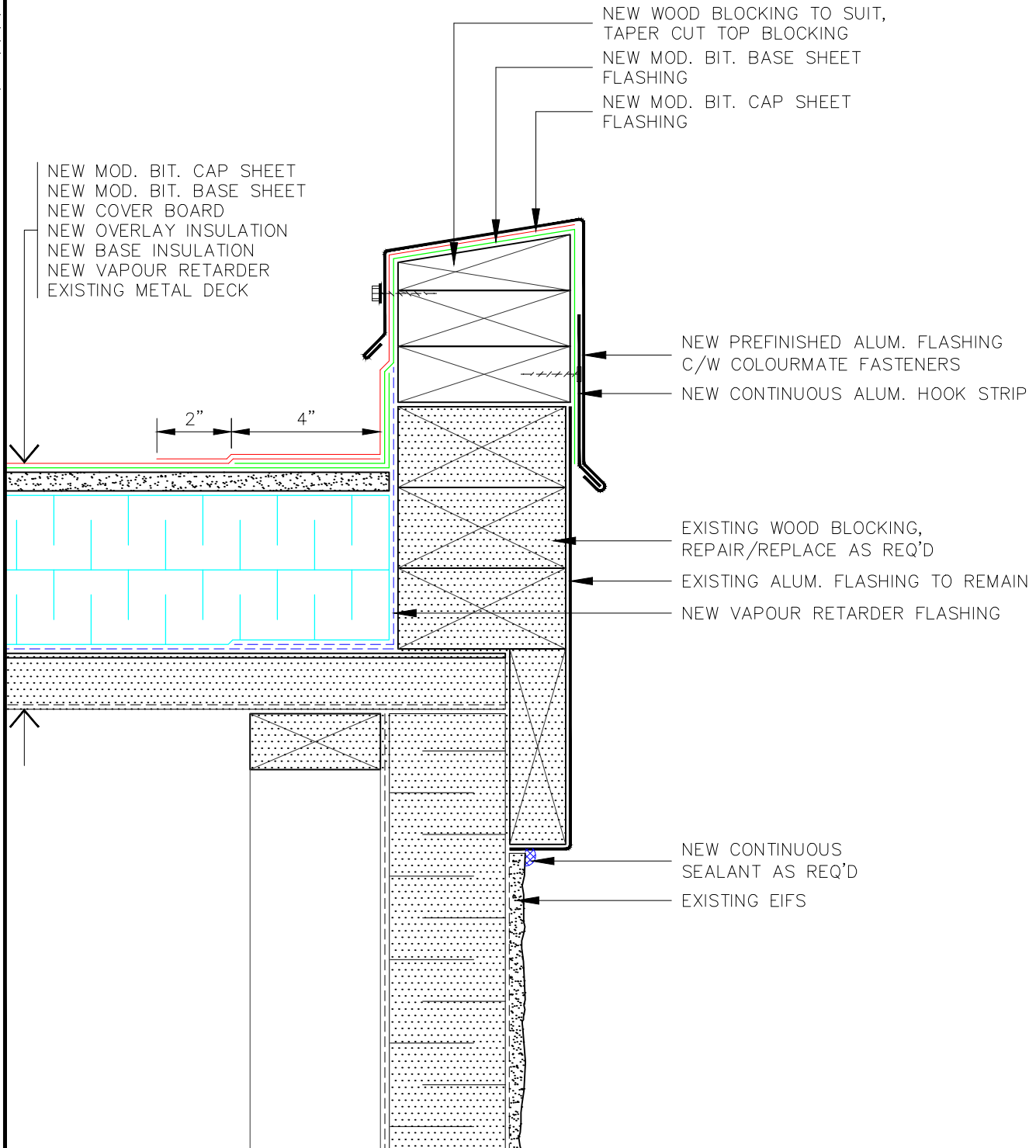
CHK. BY: J.C./M.H.

SCALE: 3" = 1'-0"

DATE: 30 MAR. 2018

DWG.#: PMM742

M:\Details\PM\3501-4000\PM(3)743-RR-MD-ISO-ISO-DD_EIFS.dwg



TITLE: PARAPET DETAIL

NOTE: NO REPRODUCTION OR USE OF THIS DRAWING IS AUTHORIZED WITHOUT EXPRESSED WRITTEN CONSENT
© COPYRIGHT 2018 IRC BUILDING SCIENCES GROUP INC.

REVISED:

REV'N.#:

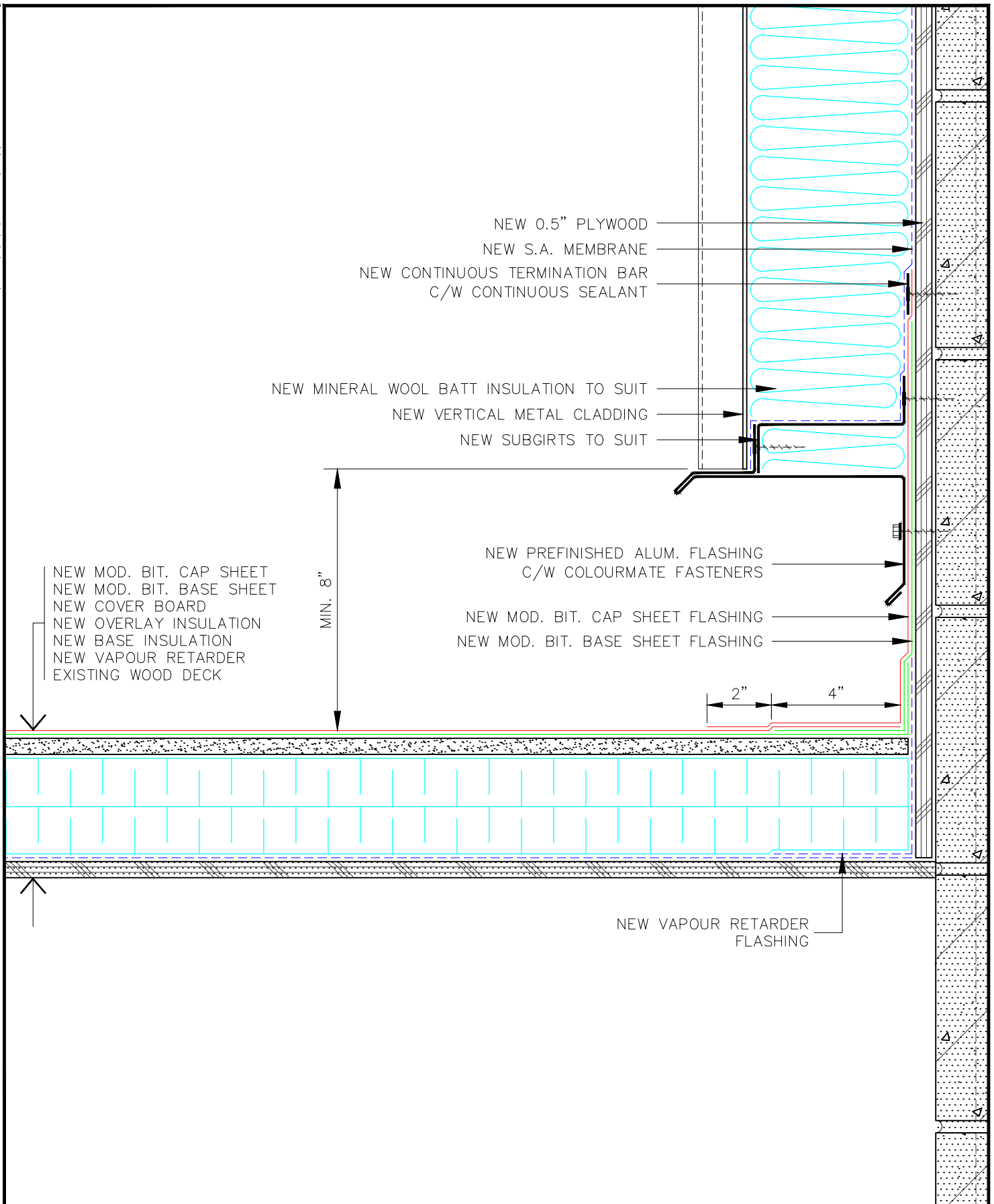
DRN. BY: M.M.

CHK. BY: J.C./M.H.

SCALE: 3" = 1'-0"

DATE: 2 APRIL 2018

DWG.#: PMM743



TITLE: HIGHWALL DETAIL

REVISED:

SCALE: 3" = 1'-0"

NOTE: NO REPRODUCTION OR USE OF THIS DRAWING IS AUTHORIZED WITHOUT EXPRESSED WRITTEN CONSENT

REV'N.#:

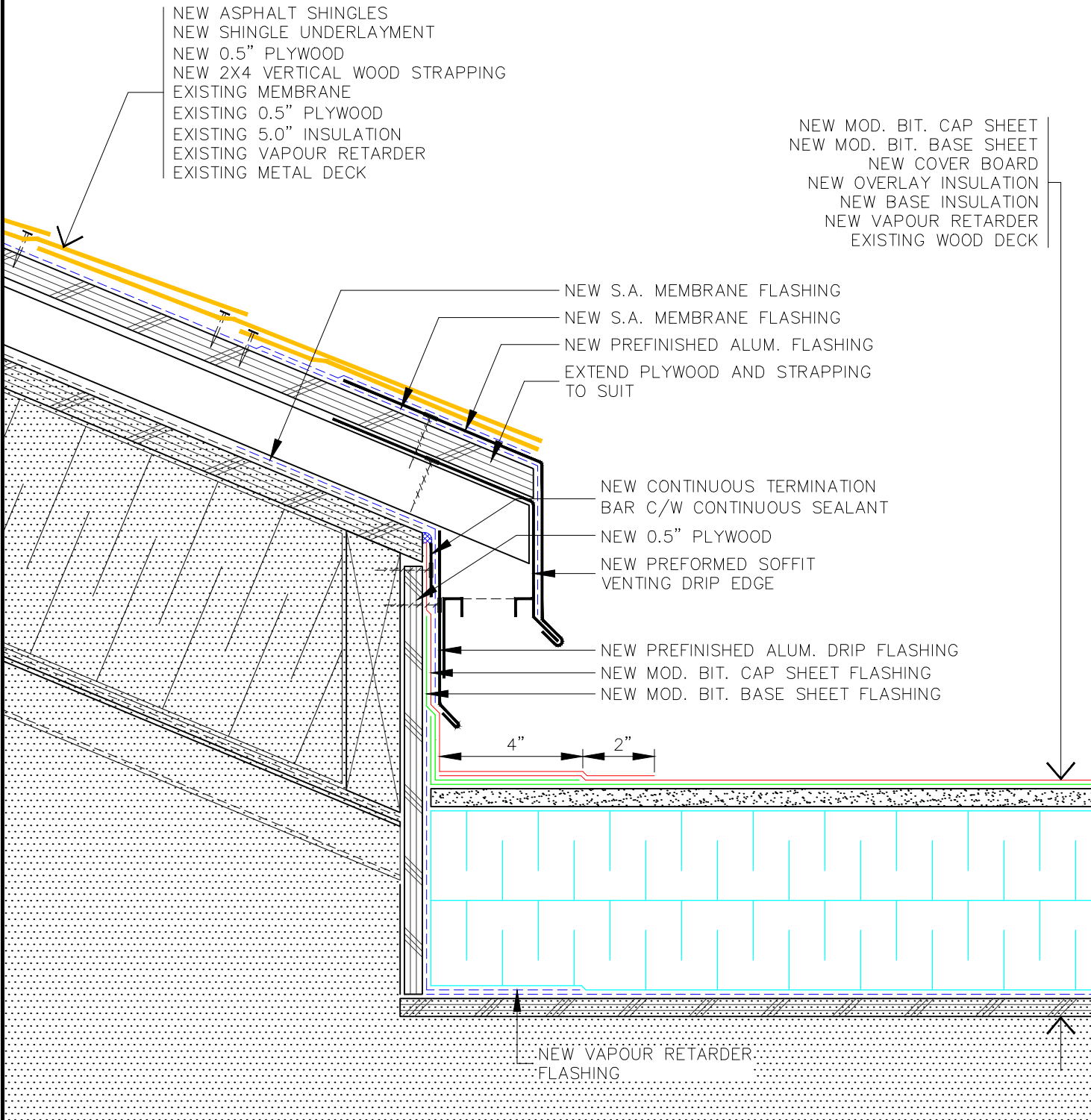
DATE: 6 APRIL 2018

© COPYRIGHT 2018 IRC BUILDING SCIENCES GROUP INC.

DRN. BY: M.M.

DWG.#: RMM834

CHK. BY: J.C./M.H.



NEW ASPHALT SHINGLES
 NEW SHINGLE UNDERLAYMENT
 NEW 0.5" PLYWOOD
 NEW 2X4 VERTICAL WOOD STRAPPING
 EXISTING MEMBRANE
 EXISTING 0.5" PLYWOOD
 EXISTING 5.0" INSULATION
 EXISTING VAPOUR RETARDER
 EXISTING METAL DECK

NEW MOD. BIT. CAP SHEET
 NEW MOD. BIT. BASE SHEET
 NEW COVER BOARD
 NEW OVERLAY INSULATION
 NEW BASE INSULATION
 NEW VAPOUR RETARDER
 EXISTING WOOD DECK

NEW S.A. MEMBRANE FLASHING
 NEW S.A. MEMBRANE FLASHING
 NEW PREFINISHED ALUM. FLASHING
 EXTEND PLYWOOD AND STRAPPING TO SUIT

NEW CONTINUOUS TERMINATION BAR C/W CONTINUOUS SEALANT
 NEW 0.5" PLYWOOD
 NEW PREFORMED SOFFIT VENTING DRIP EDGE
 NEW PREFINISHED ALUM. DRIP FLASHING
 NEW MOD. BIT. CAP SHEET FLASHING
 NEW MOD. BIT. BASE SHEET FLASHING

4" 2"

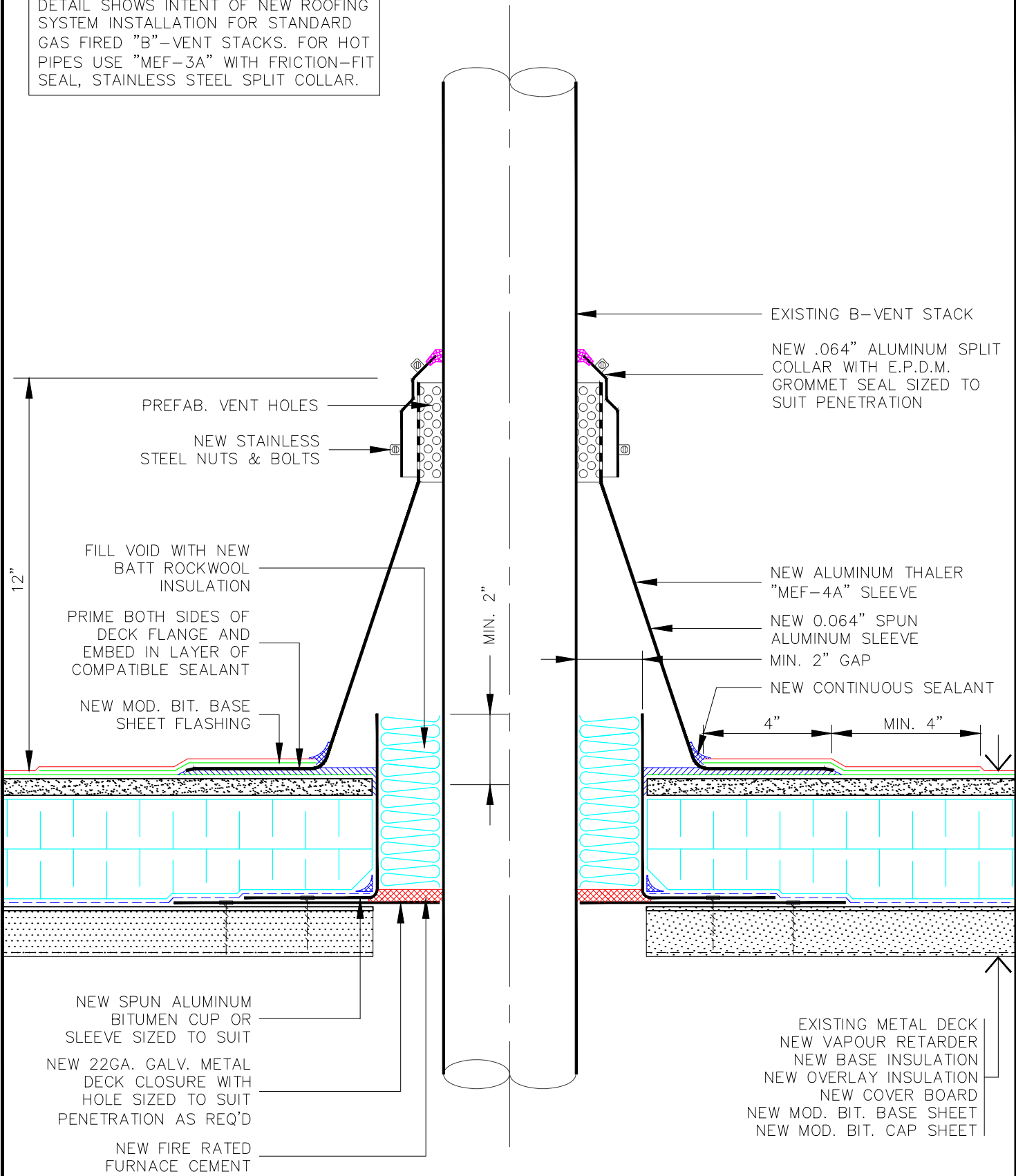
NEW VAPOUR RETARDER FLASHING



TITLE: SLOPED TO FLAT ROOF TRANSITION NOTE: NO REPRODUCTION OR USE OF THIS DRAWING IS AUTHORIZED WITHOUT EXPRESSED WRITTEN CONSENT ©COPYRIGHT 2018 IRC BUILDING SCIENCES GROUP INC.	REVISED:	SCALE: 3" = 1'-0"
	REV'N.#:	DATE: 30 MAR. 2018
	DRN. BY: M.M.	DWG.#: RMM835
	CHK. BY: M.H./J.C.	

M:\Details\SM\2501-3000 - ON HOLD\SM\2551-RR-MD-ISO-TIS-DD_MEF-4A.dwg

DETAIL SHOWS INTENT OF NEW ROOFING SYSTEM INSTALLATION FOR STANDARD GAS FIRED "B"-VENT STACKS. FOR HOT PIPES USE "MEF-3A" WITH FRICTION-FIT SEAL, STAINLESS STEEL SPLIT COLLAR.

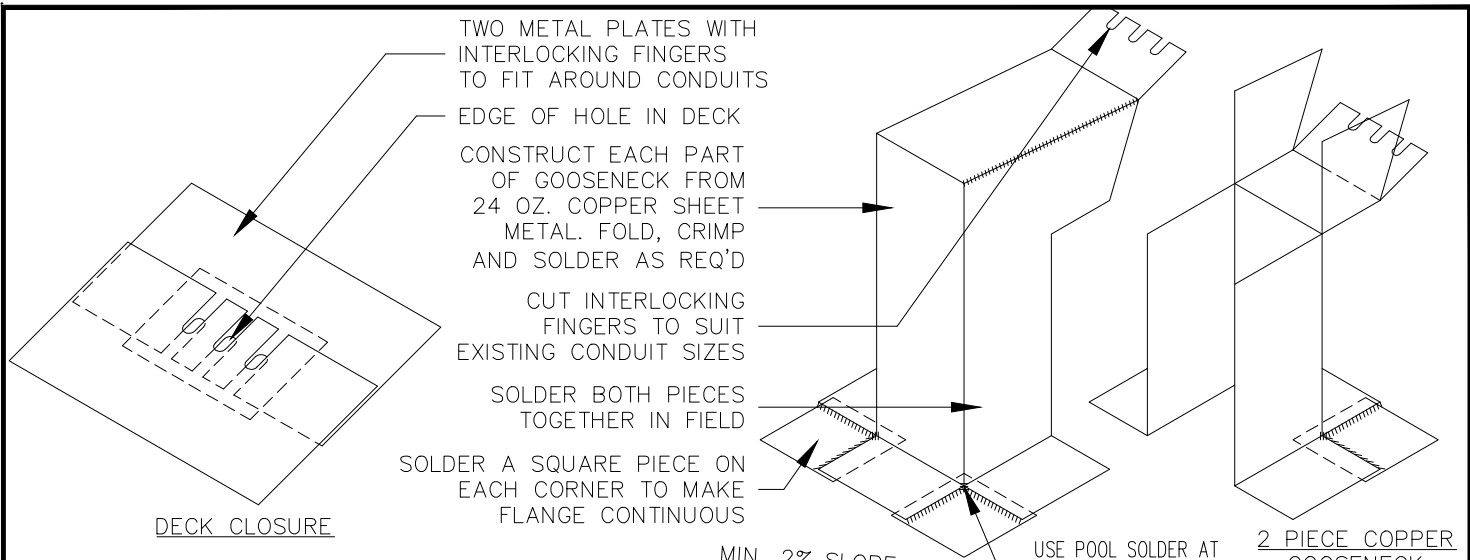


TITLE: B-VENT FLASHING DETAIL

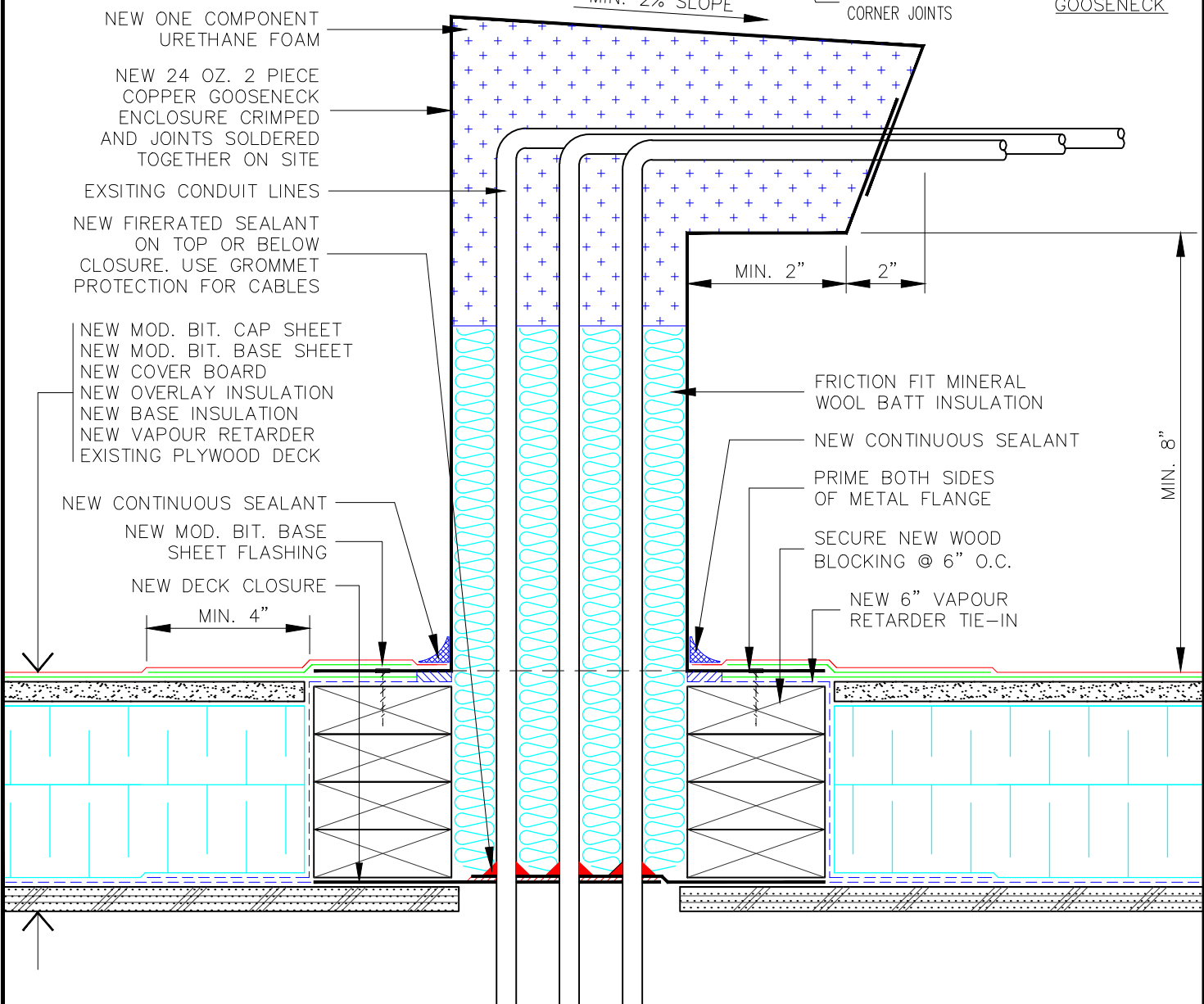
NOTE: NO REPRODUCTION OR USE OF THIS DRAWING IS AUTHORIZED WITHOUT EXPRESSED WRITTEN CONSENT
©COPYRIGHT 2018 IRC BUILDING SCIENCES GROUP INC.

REVISED:
REV'N.#:
DRN. BY: T.K.C./M.M.
CHK. BY: M.H./J.C.

SCALE: 3" = 1'-0"
DATE: 30 MAR. 2018
DWG.#: SMM551

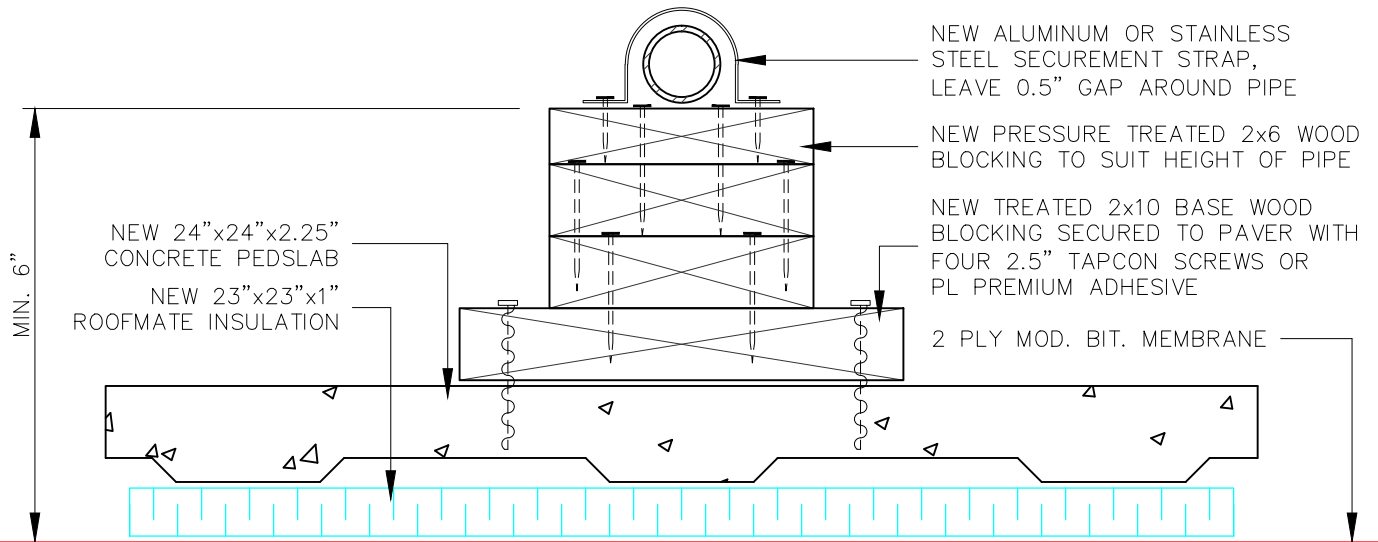


DECK CLOSURE



<p>TITLE: CONDUIT DETAIL: COPPER GOOSENECK</p> <p>NOTE: NO REPRODUCTION OR USE OF THIS DRAWING IS AUTHORIZED WITHOUT EXPRESSED WRITTEN CONSENT © COPYRIGHT 2018 IRC BUILDING SCIENCES GROUP INC.</p>	REVISED:	SCALE: 3"=1'-0"
	REV'N.#:	DATE: 30 MAR. 2018
	DRN. BY: J.C./M.M.	DWG.#: TMM375
	CHK. BY: M.H.	

MAXIMUM SUPPORT SPACING	
NOMINAL GAS PIPE SIZE DIAMETER	MAXIMUM SPACING
13mm OR LESS	2.0m
19mm TO 25mm	2.5m
32mm TO 64mm	3.0m
76mm TO 102mm	5.0m
127mm TO 203mm	6.0m
254mm OR LARGER	8.0m



TITLE: GASLINE/CONDUIT SUPPORT

REVISED:

SCALE: 3" = 1'-0"

REV'N.#:

DATE: 30 MAR. 2018

NOTE: NO REPRODUCTION OR USE OF THIS DRAWING IS AUTHORIZED WITHOUT EXPRESSED WRITTEN CONSENT
© COPYRIGHT 2018 IRC BUILDING SCIENCES GROUP INC.

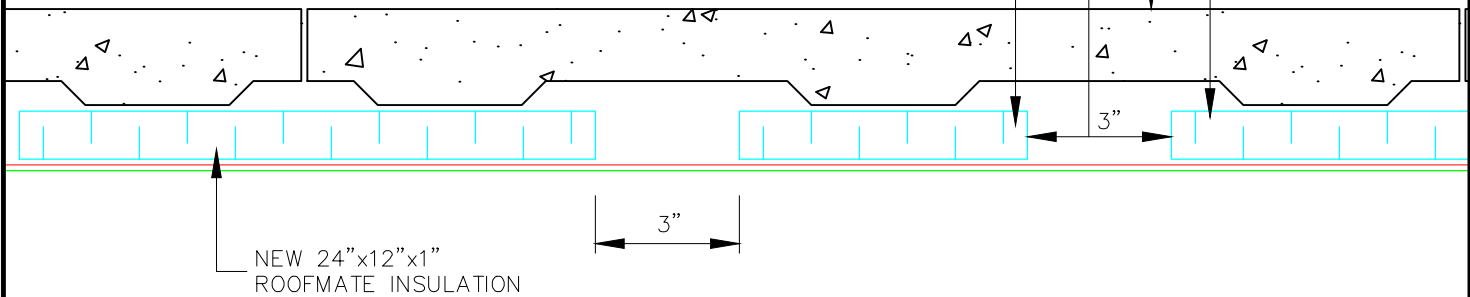
DRN. BY: F.R.A./P.B.

DWG.#:

VMN902

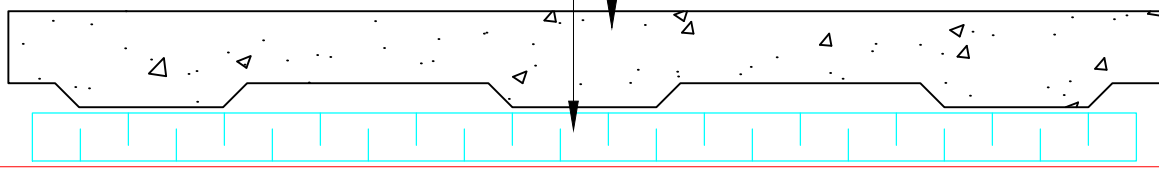
CHK. BY: A.J.D./T.K.C.

NEW 24"x12"x1"
ROOFMATE INSULATION
NEW 24"x24"x2.25"
CONCRETE PEDSLABS
ENSURE 3" GAPS ARE MAINTAINED
TO PREVENT WATER DAMMING
NEW 24"x6"x1"
ROOFMATE INSULATION



PAVER WALKWAY

NEW 24"x24"x2.25"
CONCRETE PEDSLAB
NEW 23"x23"x1"
ROOFMATE INSULATION



2 PLY MOD. BIT. MEMBRANE

SINGLE PAVER



TITLE: WALKWAY/PAVER DETAIL

REVISED:

SCALE: 3" = 1'-0"

REV'N.#:

DATE: 30 MAR. 2018

NOTE: NO REPRODUCTION OR USE OF THIS DRAWING IS
AUTHORIZED WITHOUT EXPRESSED WRITTEN CONSENT
© COPYRIGHT 2018 IRC BUILDING SCIENCES GROUP INC.

DRN. BY: F.R.A./P.B.

DWG.#:

VMN905

CHK. BY: T.K.C./A.J.D.