



PROVINCE OF NEWFOUNDLAND AND LABRADOR  
 ENGINEERING PERMIT J0291  
 STANTEC CONSULTING LTD.  
 04862  
 Signature or Member Number (Member-in-Responsible Charge)

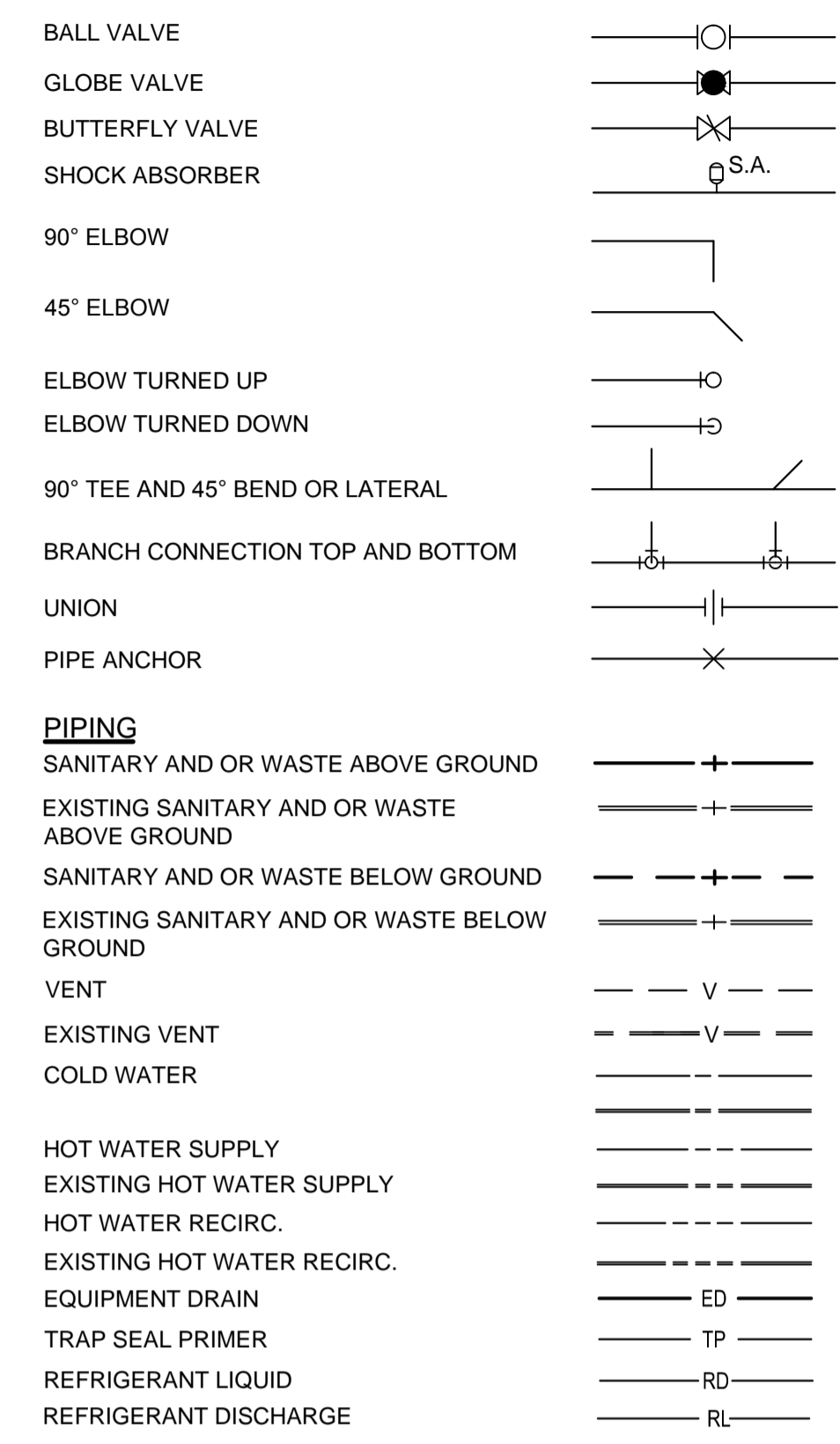
0	ISSUED FOR TENDER	SEPT. 26, 2018
revisions		date

project GOCB BAY D'Espoir  
 Bay D'Espoir

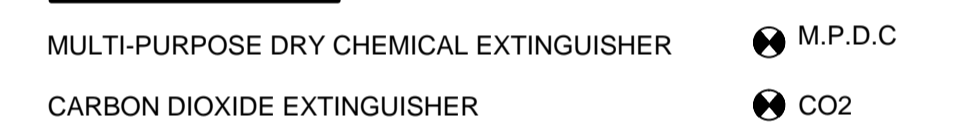
LEGEND AND DRAWING LIST

designed Brad Dawe	conçu
date 08/07/18	
drawn R.S.	dessiné
date 08/07/18	
approved Approver	approuvé
date 08/07/18	
Tender	Soumission
PWGSC Project Manager Administrateur de projets TPSGC	
project number 1005744	no. du projet
drawing no. M001	no. du dessin

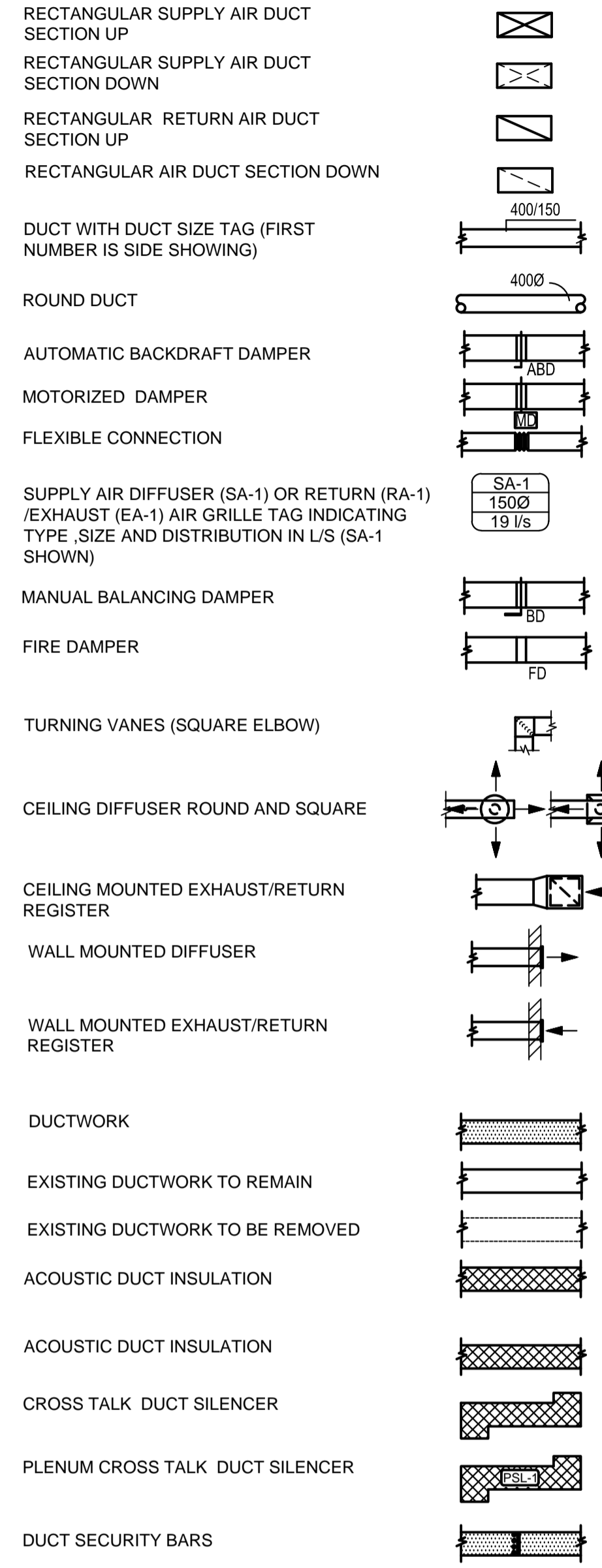
**BASIC MATERIALS AND METHODS**



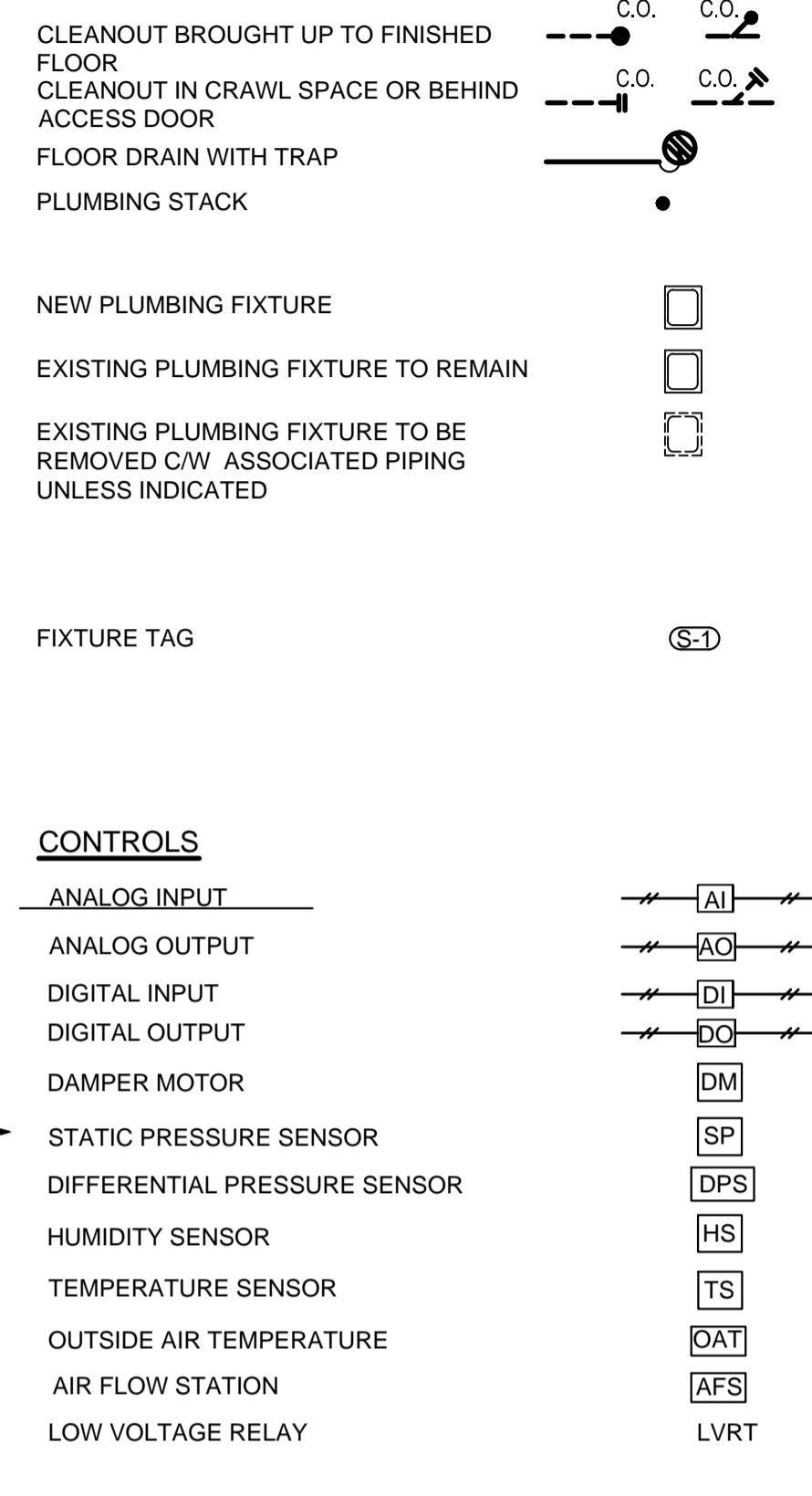
**FIRE PROTECTION**



**AIR DISTRIBUTION**



**PLUMBING AND MISC. SYMBOLS**



**LEGEND**

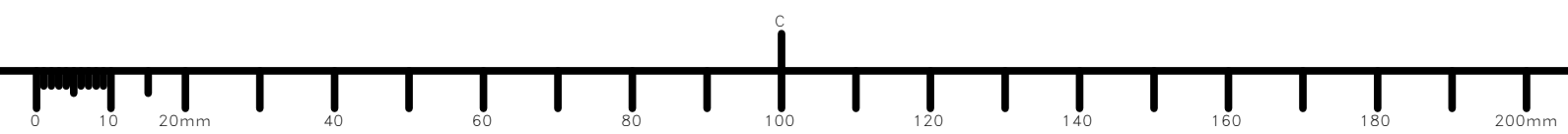
SUPPORT HANGER PIPE ATTACHMENT

2  
M001

**LIST OF DRAWINGS**

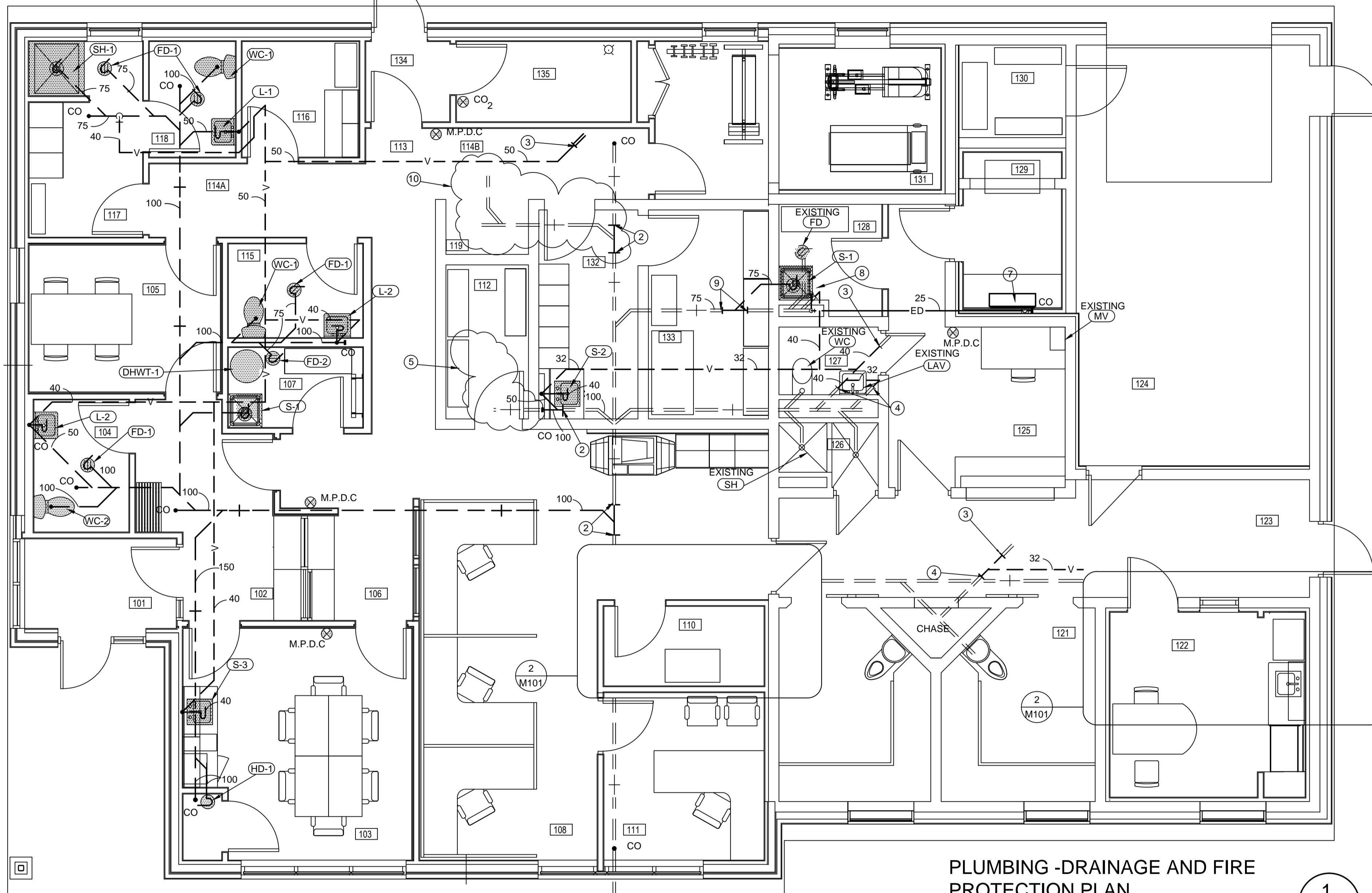
- M001 LEGEND AND DRAWING LIST
- M101 DRAINAGE AND FIRE PROTECTION PLAN
- M102 WET SERVICES PLAN
- M103 HVAC PLAN
- M501 DETAILS
- M502 DETAILS
- M701 SCHEDULES
- M801 CONTROLS

1  
M001



DRAWING NOTES:

- ① COMBINATION FIXTURE LOCATED IN THIS AREA TO BE REMOVED. ASSOCIATED PIPING TO BE REMOVED OR ABANDONED BELOW FLOOR. ABANDONED PIPE TO BE CAPPED
- ② CONNECT NEW 100mm SANITARY INTO EXISTING IN THIS AREA
- ③ CONNECT NEW VENT INTO EXISTING THRU THE ROOF VENT IN THIS AREA
- ④ CONNECT NEW VENT INTO EXISTING IN THIS AREA
- ⑤ CLOUD AREA INDICATES ABANDONED PIPE. ANY PIPE STUB ABOVE THE FLOOR TO BE REMOVE BELOW THE CONCRETE FLOOR. ABANDONED PIPE TO BE CAPPED
- ⑥ TRAP FOR INDOOR EVAPORATOR CONDENSATE DRAIN INSIDE CABINET
- ⑦ EVAPORATOR - SEE DRAWING M103
- ⑧ EXISTING LAVATORY TO BE REMOVED C/W ASSOCIATED DRAINAGE AND WATER PIPING. CAP PIPE IN PIPE CHASE. VENT PIPING TO REMAIN
- ⑨ CONNECT NEW 75mm SANITARY INTO EXISTING IN THIS AREA
- ⑩ FLOOR DRAIN LOCATED IN THIS AREA TO BE REMOVED. CLOUD AREA INDICATES ABANDONED PIPE. ANY PIPE STUB ABOVE THE FLOOR TO BE REMOVED BELOW THE CONCRETE FLOOR. ABANDONED PIPE TO BE CAPPED
- ⑪ EXTEND CLEANOUT UP FLUSH TO BOTTOM OF CABINET

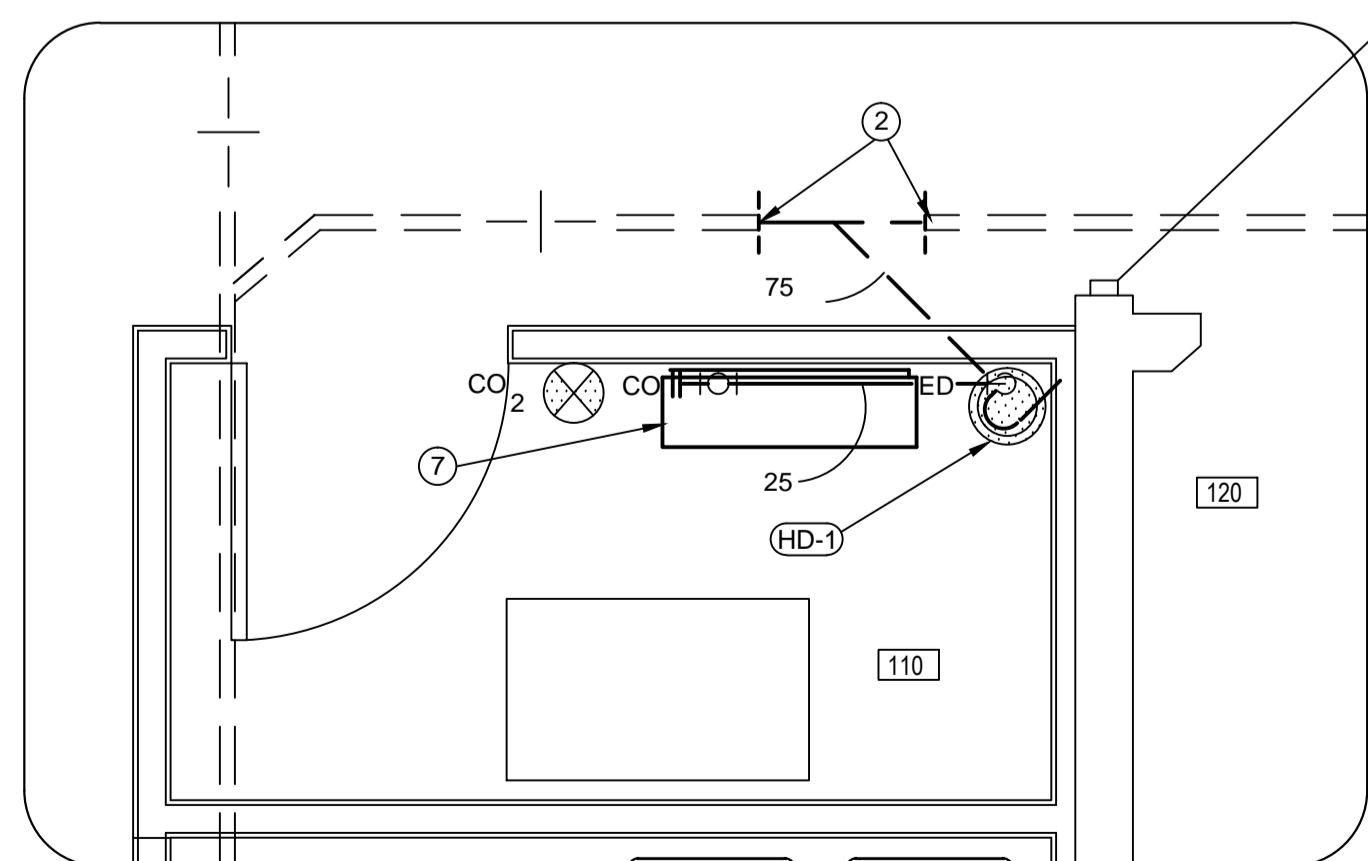


PLUMBING - DRAINAGE AND FIRE PROTECTION PLAN

SCALE: 1:50

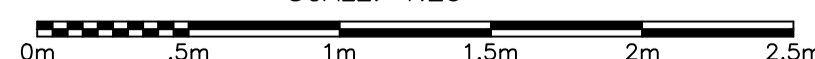


1  
M101

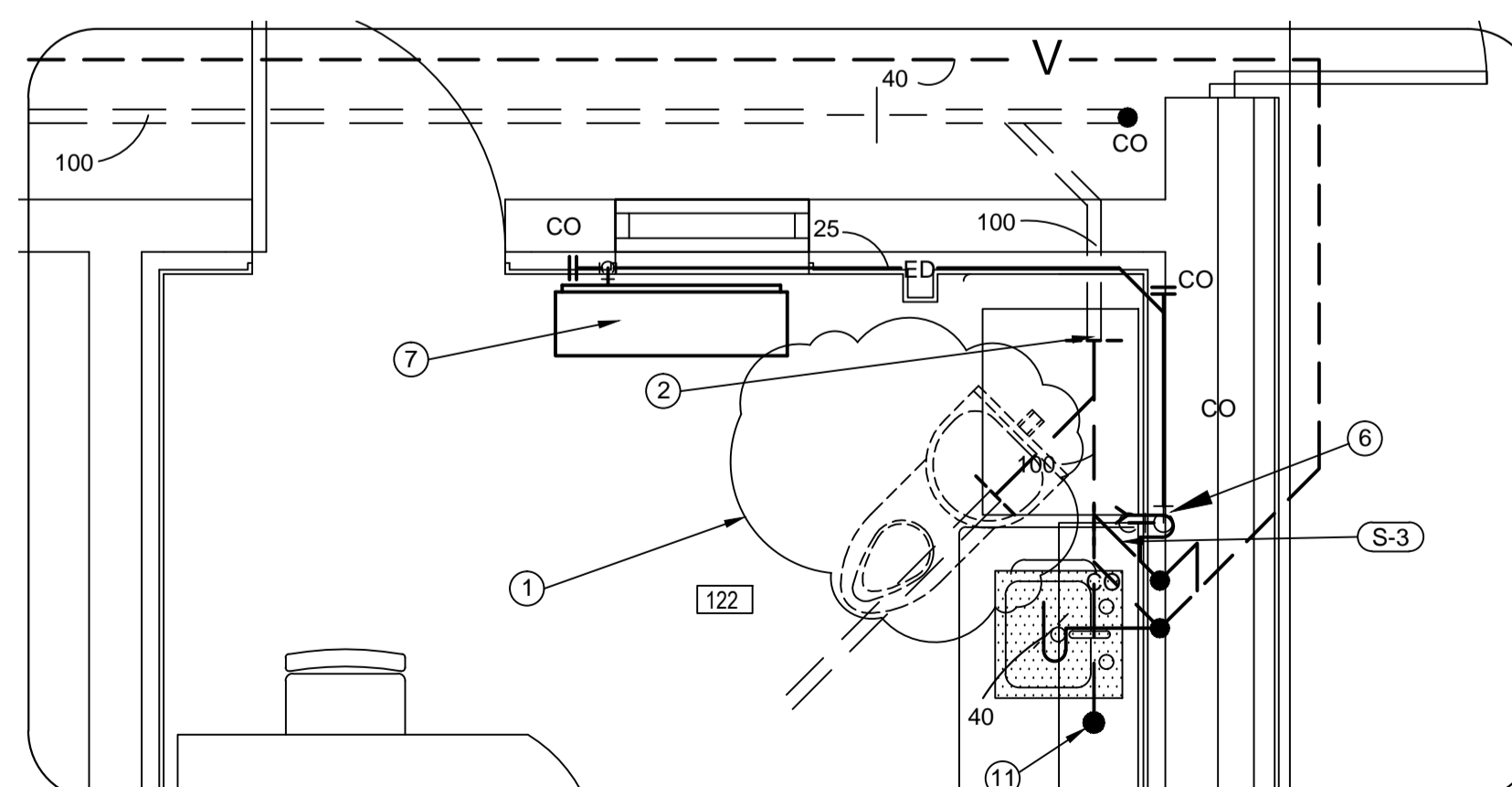


PLUMBING - WET SERVICES - PART PLAN

SCALE: 1:25

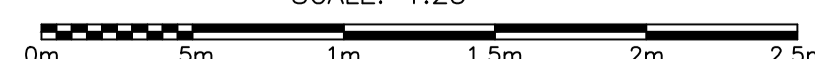


2  
M101



PLUMBING - WET SERVICES - PART PLAN

SCALE: 1:25



3  
M101



PROVINCE OF NEWFOUNDLAND AND LABRADOR  
 ENGINEERING PERMIT J0291  
 STANTEC CONSULTING LTD.  
 04862  
 Signature or Member Number (Member-in-Responsible Charge)

0	ISSUED FOR TENDER	SEPT. 26, 2018
revisions		date

project project

GOCB BAY D'Espoir

Bay D'Espoir

drawing dessin  
**DRAINAGE AND FIRE PROTECTION PLAN**

designed Brad Dawe conçu  
 date 08/07/18  
 drawn R.S. dessiné  
 date 08/07/18  
 approved Approver approuvé  
 date 08/07/18

Tender Soumission

PWGSC Project Manager / Administrateur de projets TPSGC

project number no. du projet

1005744

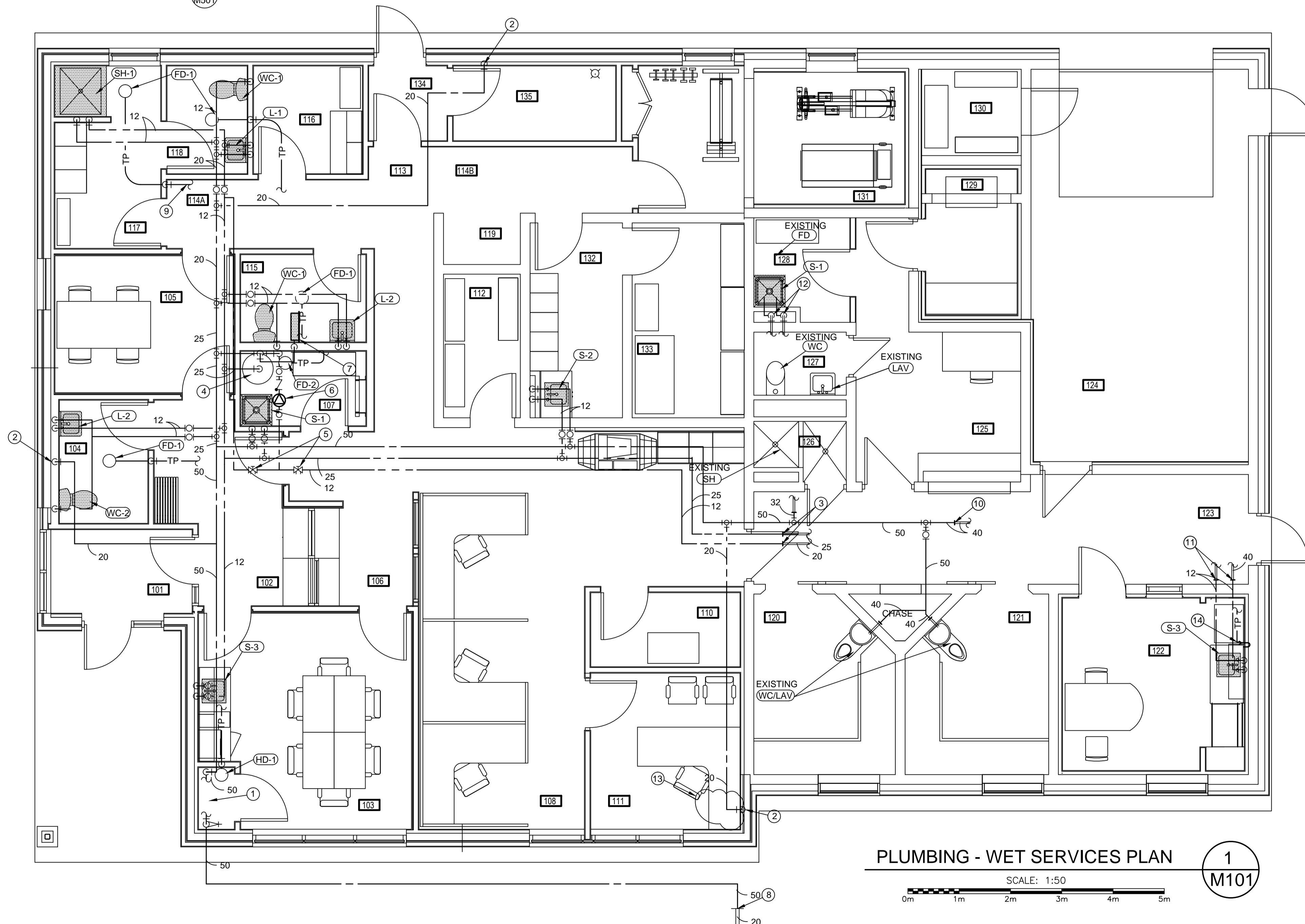
drawing no. no. du dessin

M101



DRAWING NOTES:

- |  |   |   |
|--|---|---|
| ① WATER ENTRANCE (1 M501)  | ⑥ RE-CIRCULATION PUMP P-1   | ⑪ CONNECT NEW DOMESTIC H.W AND C.W. WATER PIPE INTO EXISTING IN THIS APPROX. LOCATION   |
| ② 20mm C.W. LINE DN AND CONNECT INTO EXISTING WALL HYDRANT                               | ⑦ TRAP SEAL PRIMER (LOCATE PRIMER IN ATTIC SPACE) PROVIDE 20mm PLYWOOD SUPPORT. ATTACHED TO STRUCTURE | ⑫ CONNECT NEW DOMESTIC H.W AND C.W. WATER PIPE INTO EXISTING IN PIPE CHASE  |
| ③ CONNECT NEW DOMESTIC H.W AND RE-CIR. WATER PIPE INTO EXISTING IN THIS APPROX. LOCATION | ⑧ CONNECT NEW WATER MAIN INTO EXISTING IN THIS APPROX. LOCATION                                       | ⑬ WATER ENTRANCE LOCATED IN THIS AREA TO BE REMOVED. CLOUD AREA INDICATES ABANDONED PIPE. ANY PIPE STUB ABOVE THE FLOOR TO BE REMOVED BELOW THE CONCRETE FLOOR. ABANDONED PIPE TO BE CAPPED |
| ④ HOT WATER TANK (2 M501)  | ⑨ TRAP SEAL PRIMER FOR FLOOR DRAIN. PIPE TO TRAP SEAL PRIMER (TYP.)                                   | ⑭ TRAP PRIMER FOR CONDENSER TRAP. INDIRECTLY CONNECTED  |
| ⑤ CIRCUIT SETTER (4 M501)  | ⑩ CONNECT NEW DOMESTIC C.W. WATER PIPE INTO EXISTING IN THIS APPROX. LOCATION                         |   |



PLUMBING - WET SERVICES PLAN

SCALE: 1:50

1  
M101



PROVINCE OF NEWFOUNDLAND AND LABRADOR  
 ENGINEERING PERMIT J0291  
 STANTEC CONSULTING LTD.  
 04862  
 Signature or Member Number (Member-in-Responsible Charge)

0	ISSUED FOR TENDER	SEPT. 26, 2018
revisions		date

project GOCB BAY D'Espoir

Bay D'Espoir

drawing WET SERVICES PLAN

designed Brad Dawe	conçu
date 08/07/18	
drawn R.S.	dessiné
date 08/07/18	
approved Approver	approuvé
date 08/07/18	

Tender Soumission

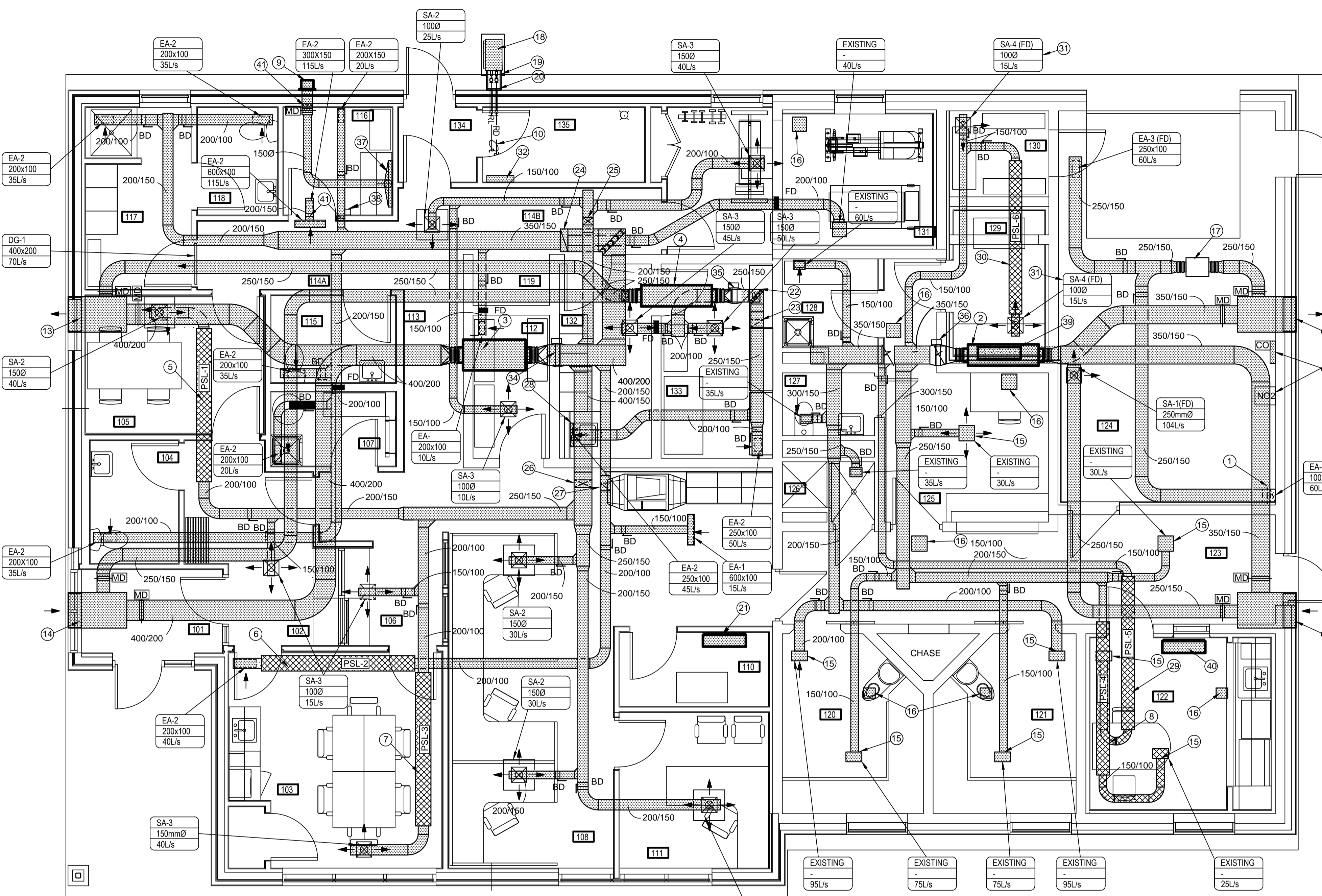
PWGSC Project Manager / Administrateur de projets TPSGC

project number 1005744

drawing no. M102

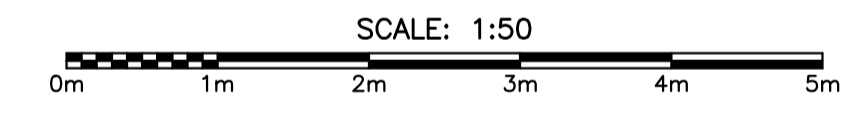


PROVINCE OF NEWFOUNDLAND AND LABRADOR  
**pegnl** ENGINEERING PERMIT J0291  
**STANTEC CONSULTING LTD.**  
 04862  
 Signature of Member Number (Member-in-Responsible Charge)

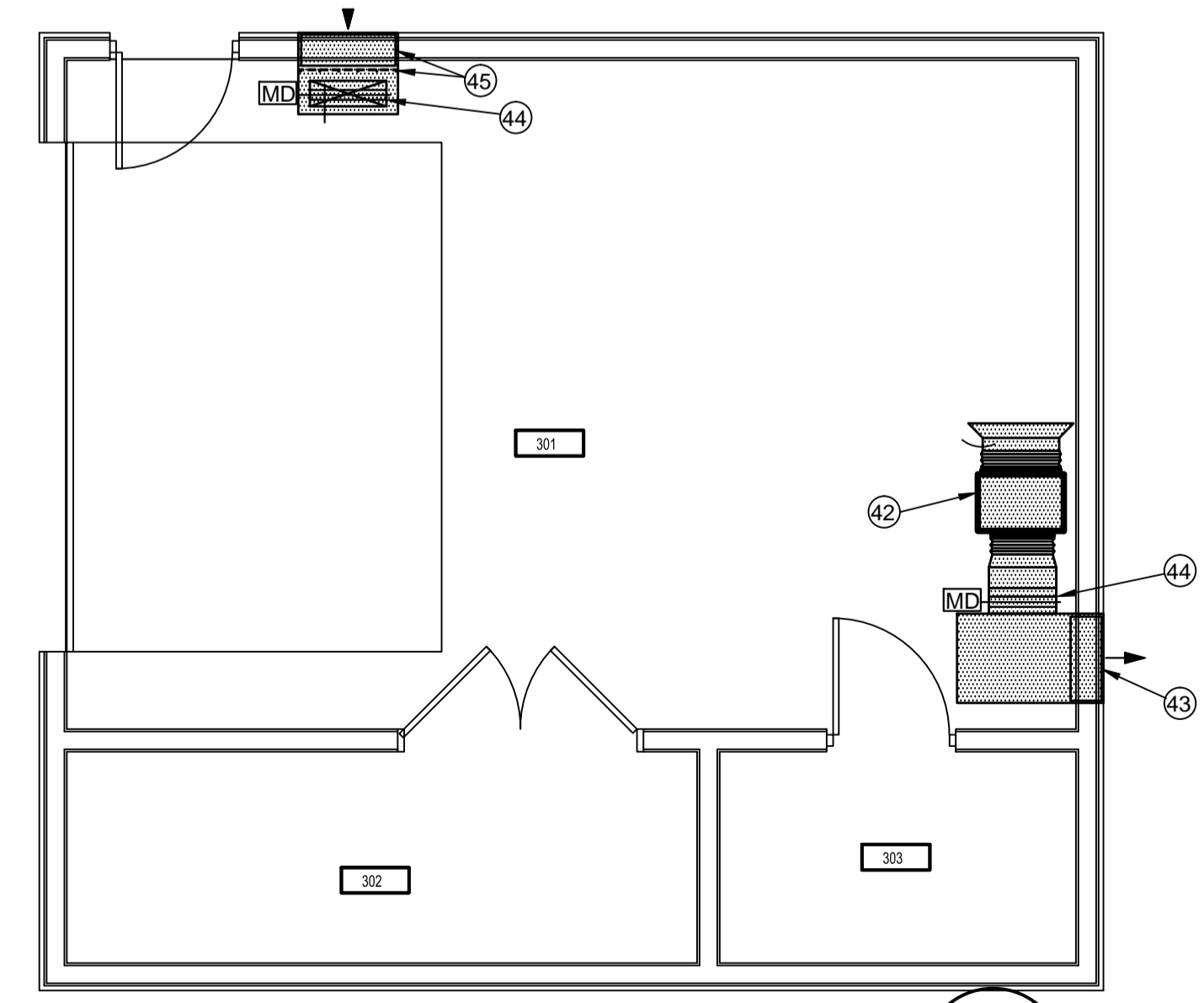


- DRAWING NOTES:**
- ① 250x100 EXHAUST DOWN TO WITHIN 150mm ABOVE FIN. FL. PROVIDE FIRE RATED CEILING DAMPER @ FIRE SEPARATION.
  - ② HEAT RECOVERY VENTILATOR - HRV-1
  - ③ HEAT RECOVERY VENTILATOR - HRV-2
  - ④ HEAT RECOVERY VENTILATOR - HRV-3
  - ⑤ CROSS TALK SILENCER PSL-1
  - ⑥ CROSS TALK SILENCER PSL-2
  - ⑦ CROSS TALK SILENCER PSL-3
  - ⑧ CROSS TALK SILENCER PSL-4
  - ⑨ EXHAUST FAN EF-1
  - ⑩ SEE FLOW SCHEMATIC FOR PIPE SIZING
  - ⑪ 700X500 EXHAUST LOUVER
  - ⑫ 700X500 F.A. INTAKE LOUVER
  - ⑬ 700X600 EXHAUST LOUVER
  - ⑭ 700X600 F.A. INTAKE LOUVER
  - ⑮ CONNECT NEW DUCT INTO EXISTING SECURITY GRILLE. PROVIDE NEW PLENUM AS REQUIRE. GRILLE TO BE CLEANED.
  - ⑯ EXISTING DIFFUSER/GRILLE/FIRE DAMPER TO REMAIN. FIRE DAMPER TO BE CLOSED AND SEAL AND COVER WITH 20 GAUGE SHEET METAL (TAG WITH A WARNING STICKER ABOVE CEILING). EXHAUST FAN EF-2
  - ⑰ OUTDOOR CONDENSING UNIT - CU-1 INSTALLATION AS PER MANUFACTURER RECOMMENDATIONS
  - ⑱ ICE SHIELD
  - ⑲ 40mm ALUMINUM ANGLE SUPPORT SECURE TO BUILDING
  - ⑳ INDOOR EVAPORATOR EV-1
  - ㉑ 250X150 SUPPLY DUCT DN - PROVIDE FIRE DAMPER @ LINE OF FLOOR SEPARATION
  - ㉒ 250X150 EXHAUST DUCT DN - PROVIDE FIRE DAMPER @ LINE OF FLOOR SEPARATION
  - ㉓ 450X150 EXHAUST DUCT DN - PROVIDE FIRE DAMPER @ LINE OF CEILING FIRE SEPARATION
  - ㉔ 200X150 SUPPLY DUCT DN - PROVIDE FIRE DAMPER @ LINE OF CEILING FIRE SEPARATION
  - ㉕ 400X150 SUPPLY DUCT DN - PROVIDE FIRE DAMPER @ LINE OF FIRE SEPARATION
  - ㉖ 200X150 EXHAUST DUCT DN - PROVIDE FIRE DAMPER @ LINE OF FLOOR PENETRATION
  - ㉗ 200X100 EXHAUST DUCT DN AND TERMINATE 300mm ABOVE SINK FAUCET
  - ㉘ CROSS TALK SILENCER PSL-5
  - ㉙ CROSS TALK SILENCER PSL-6
  - ㉚ SEE MOUNTING DETAIL
  - ㉛ DDC PANEL LOCATION
  - ㉜ HONEYWELL E3 POINT OR ALTERNATE - CO (1000mm AFF.) AND NO2 (150mm BELOW CEILING) SENSOR TO ACTIVATE EXHAUST FAN EF-2. ON AN ALARM HONEYWELL E3 POINT WALL (24 VDC/VAC NOMINAL, 0.35 AMP MAXIMUM) MOUNT STANDALONE GAS MONITOR CONFIGURED AS A DEVICE WITH DUAL GAS (CO AND NO2) REMOTE SENSOR MONITORING WITH FULLY ADDRESSABLE, NETWORKED SYSTEM INTEGRATED WITH A BUILDING AUTOMATION SYSTEM BACNET TO CONTROLS. INTERLOCK WITH THE ALARM AND TO START/STOP THE EXHAUST FAN EF-2 AND MOTORIZED DAMPERS.
  - ㉝ DUCT HEATING COIL DHC-1
  - ㉞ DUCT HEATING COIL DHC-2
  - ㉟ DUCT HEATING COIL DHC-3
  - ㊱ MANIFOLD SLOT HOOD
  - ㊲ SPEED CONTROLLER
  - ㊳ INDOOR EVAPORATOR EV-2
  - ㊴ INDOOR EVAPORATOR EV-3
  - ㊵ SECURE BARS IN DUCT. 10M STEEL BARS AT 150mm O.C. MAX. EACH WAY. WELD TO FRAME AND AT CROSS POINTS.
  - ㊶ EXHAUST FAN EF-3
  - ㊷ 700x500 EXHAUST LOUVER C/W SECURE BARS - SEE DETAL 8 DRAWING M502
  - ㊸ 600x200 MOTORIZED INSULATED DAMPER
  - ㊹ 800x600 F.A. INTAKE LOUVER C/W SECURE BARS - SEE DETAL 8 DRAWING M502

**VENTILATION - PLAN**



1  
M103



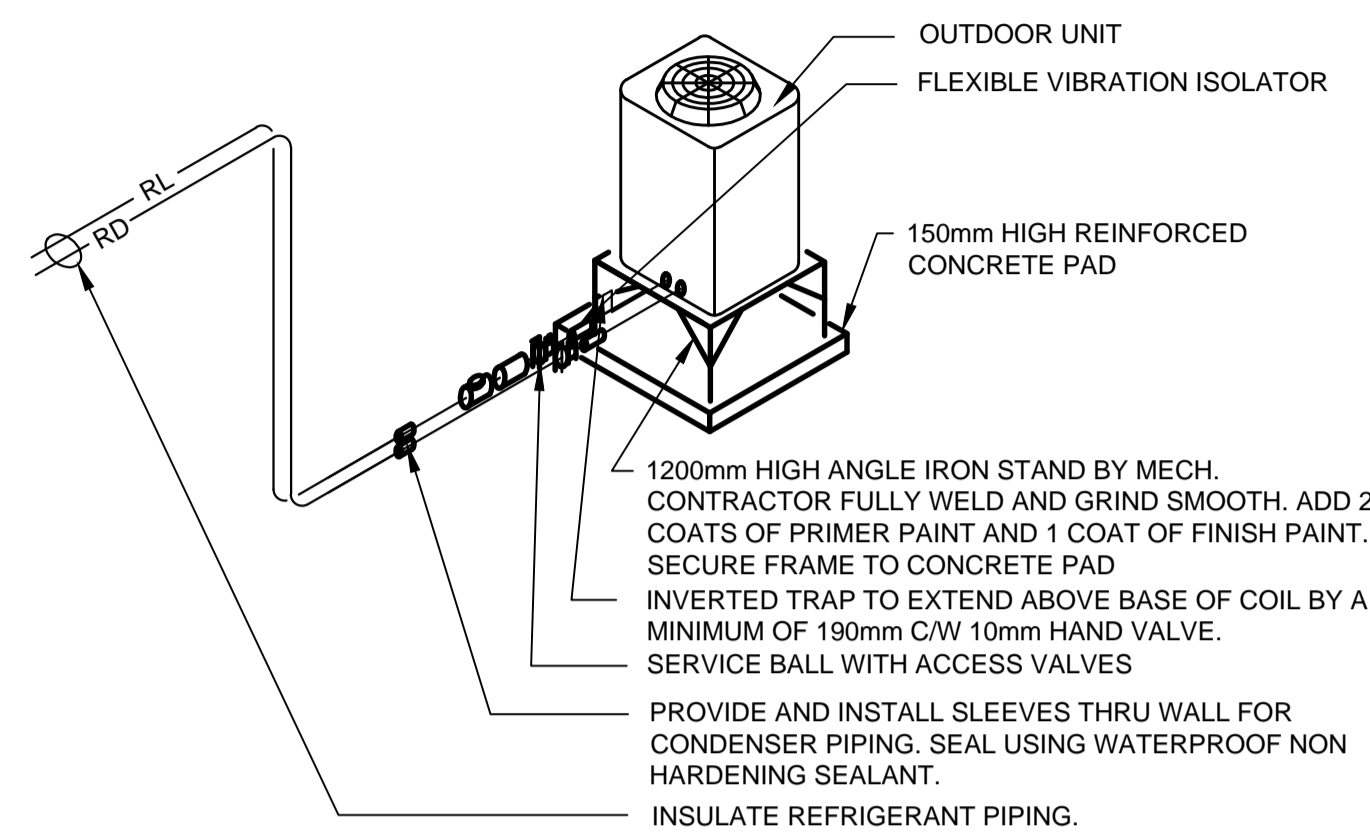
**VENTILATION - PLAN OUT BUILDING PLAN**



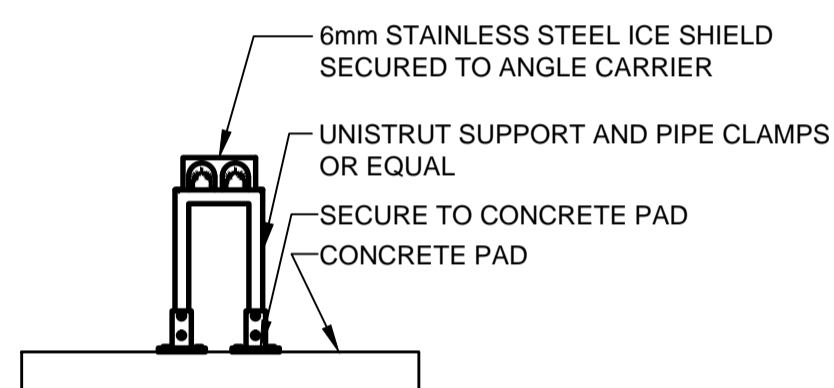
2  
M103

0	ISSUED FOR TENDER	SEPT. 26.2018
revisions		date

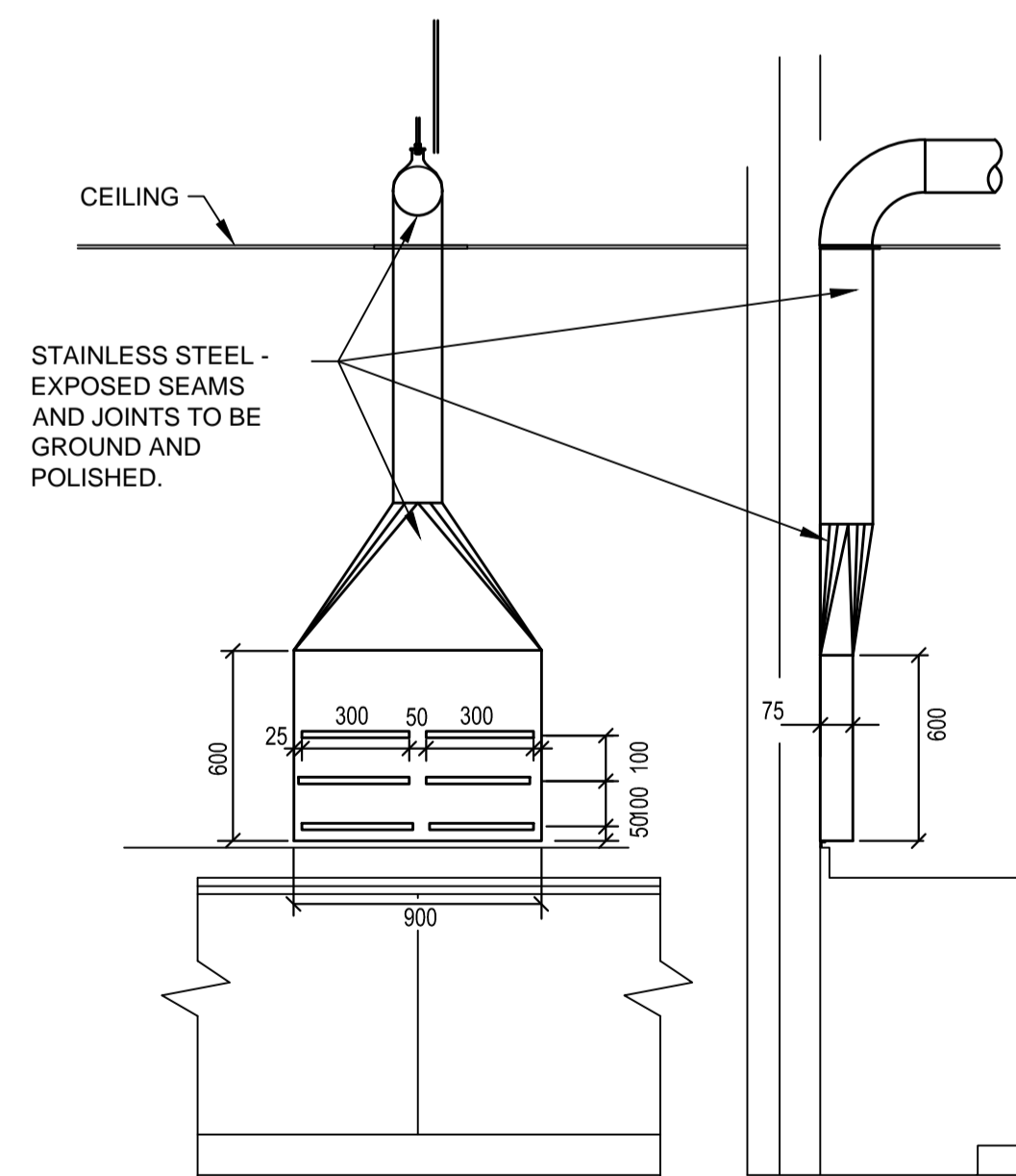
project	GOCB BAY D'Espoir	
project	Bay D'Espoir	
drawing	HVAC PLAN	
dessin		
designed	Brad Dawe	conçu
date	08/07/18	
drawn	R.S.	dessiné
date	08/07/18	
approved	Approver	approuvé
date	08/07/18	
Tender	Soumission	
PWGSC Project Manager	Administrateur de projets TPWGC	
project number	no. du projet	
	1005744	
drawing no.	no. du dessin	
	M103	



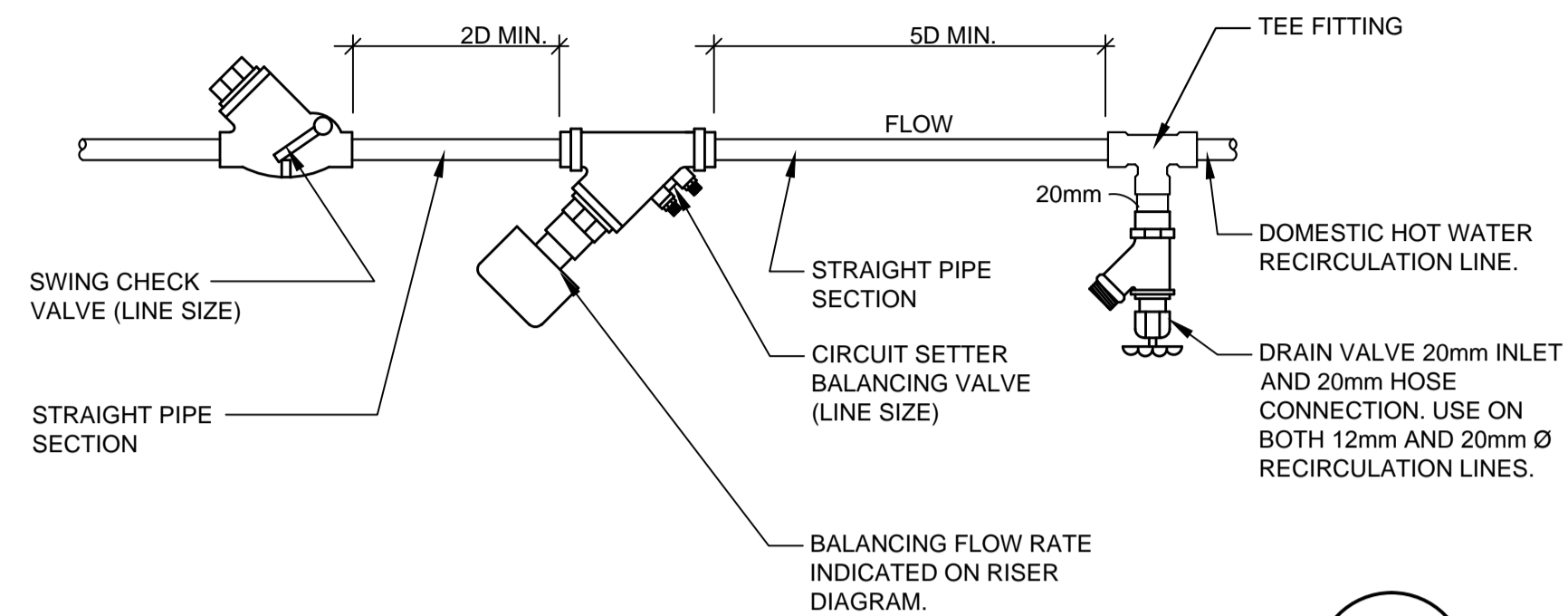
**REFRIGERATION PIPING DETAIL** 8 M501  
N.T.S.



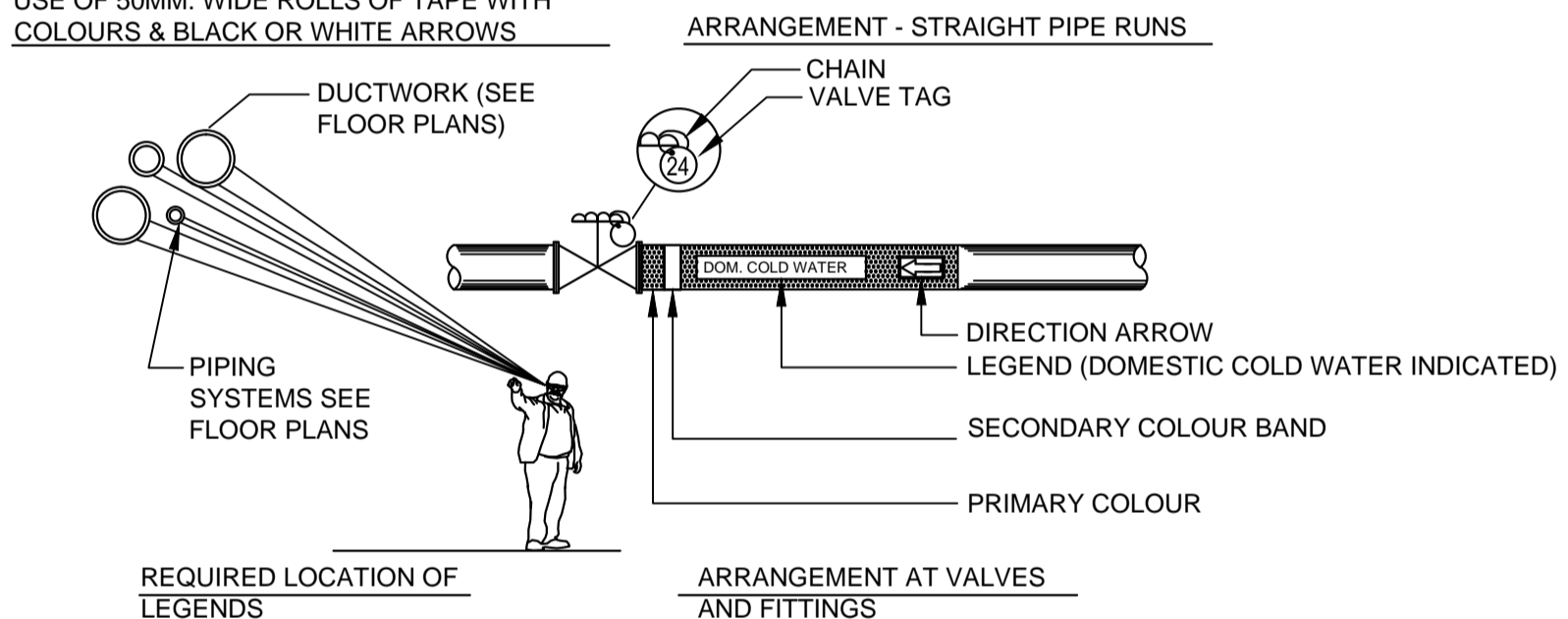
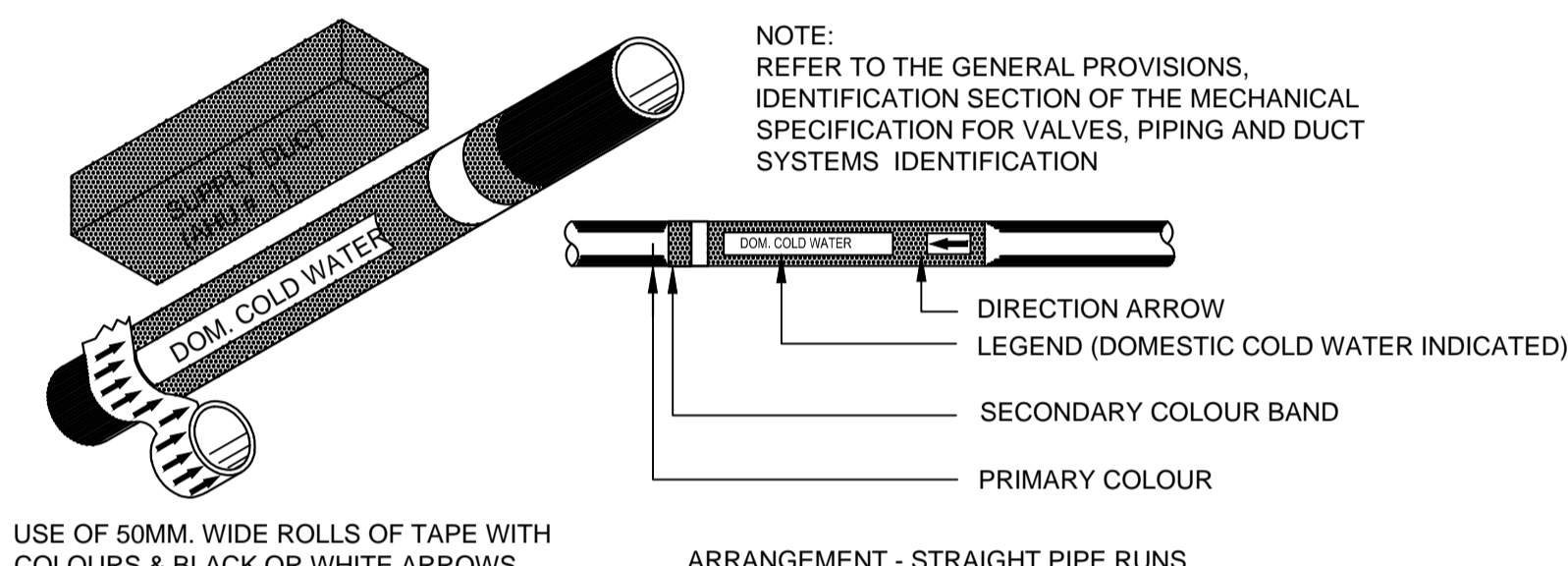
**ICE SHIELD DETAIL** 9 M501  
N.T.S.



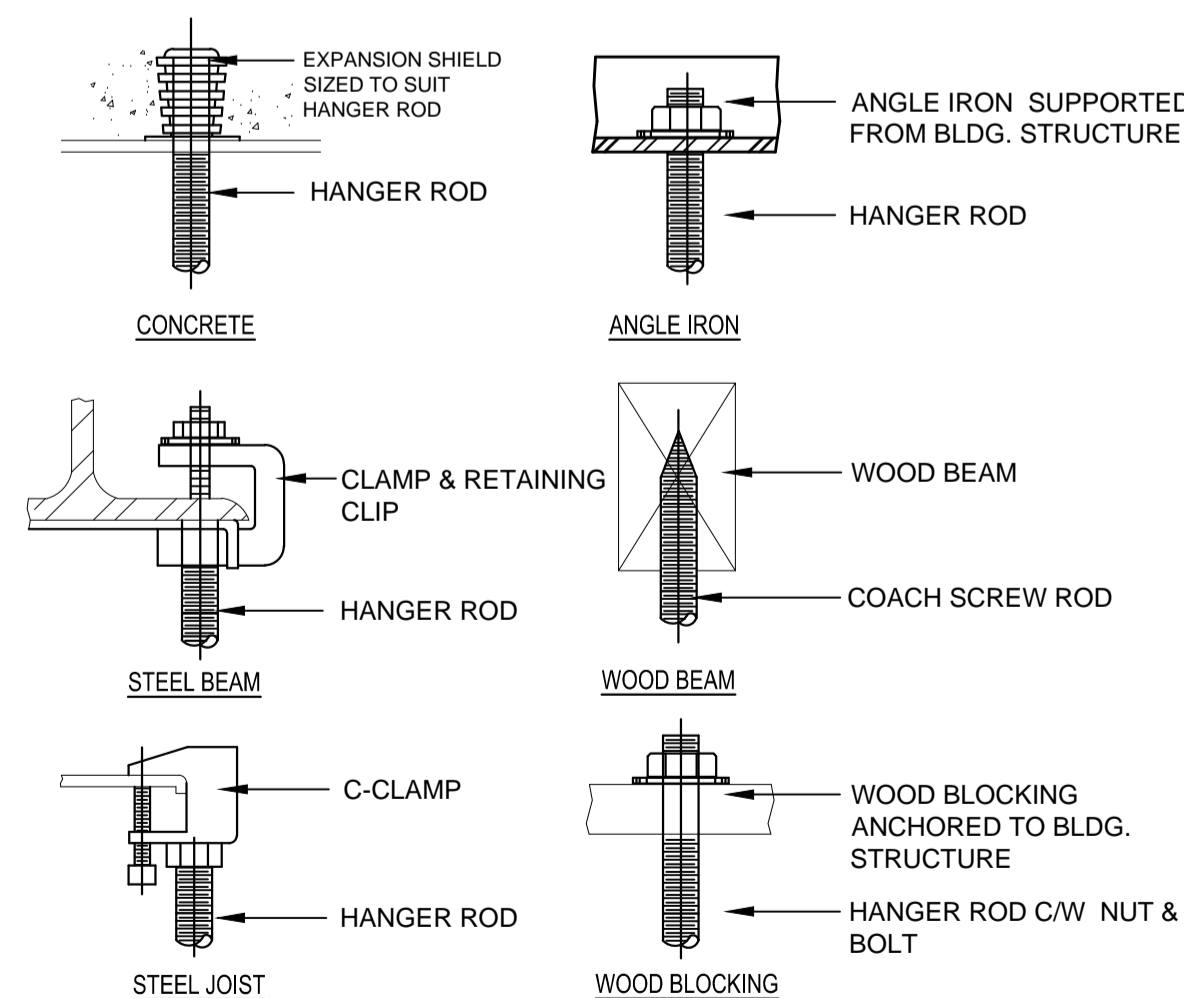
**MANIFOLD SLOT HOOD DETAIL** 10 M501  
MF-1



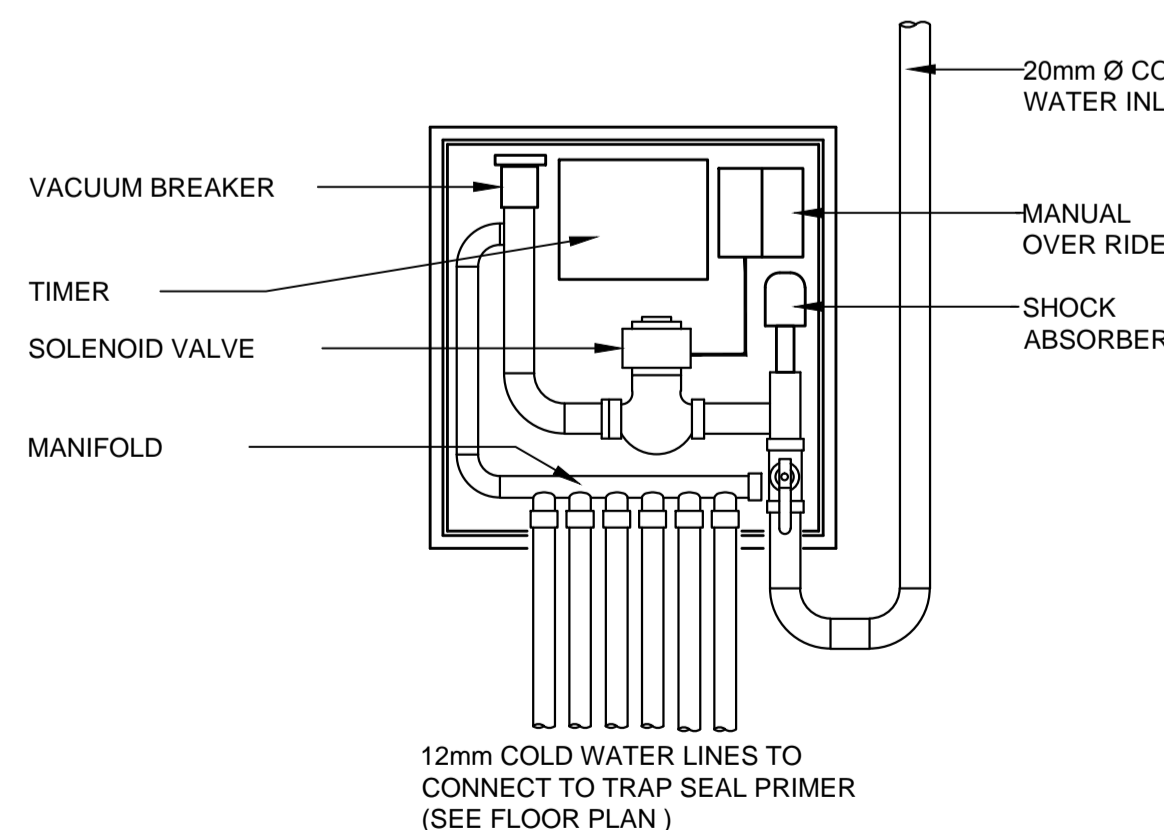
**DHW RECIR. SETTER DETAIL** 4 M501  
N.T.S.



**PIPE IDENTIFICATION DETAILS** 5 M501  
N.T.S.



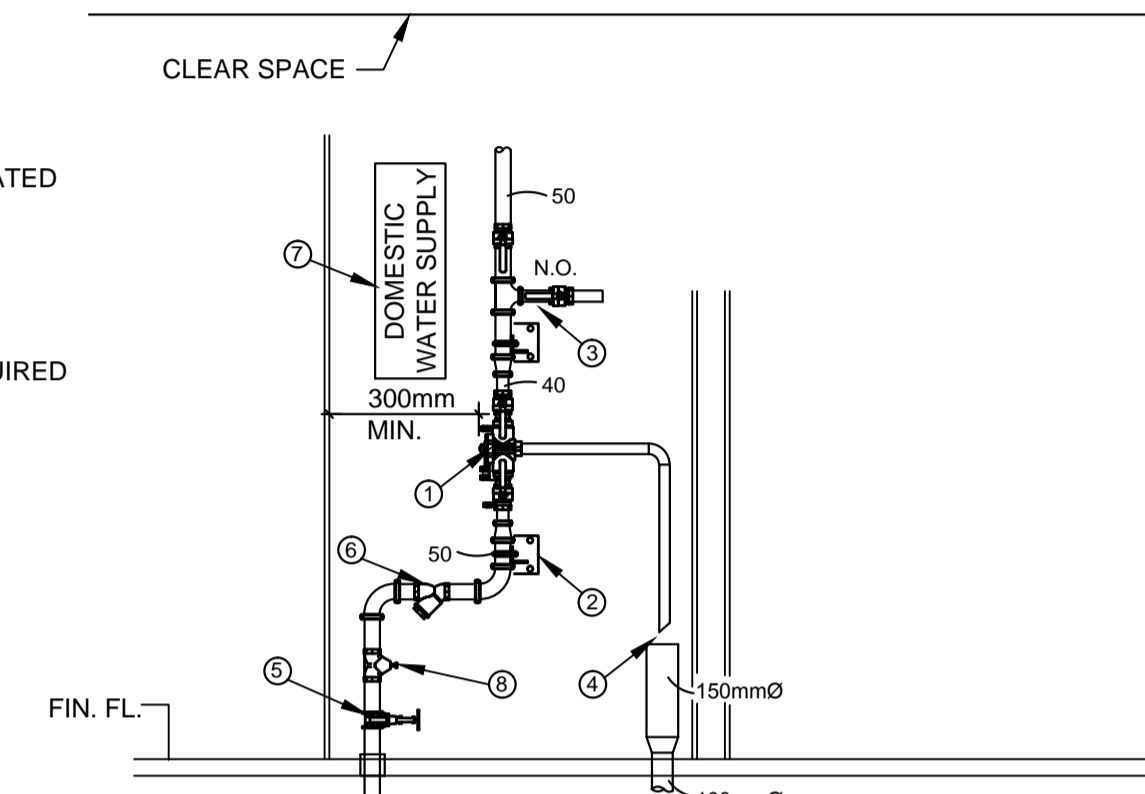
**DETAIL - TYP. HANGER ROD SUPPORTS** 7 M501



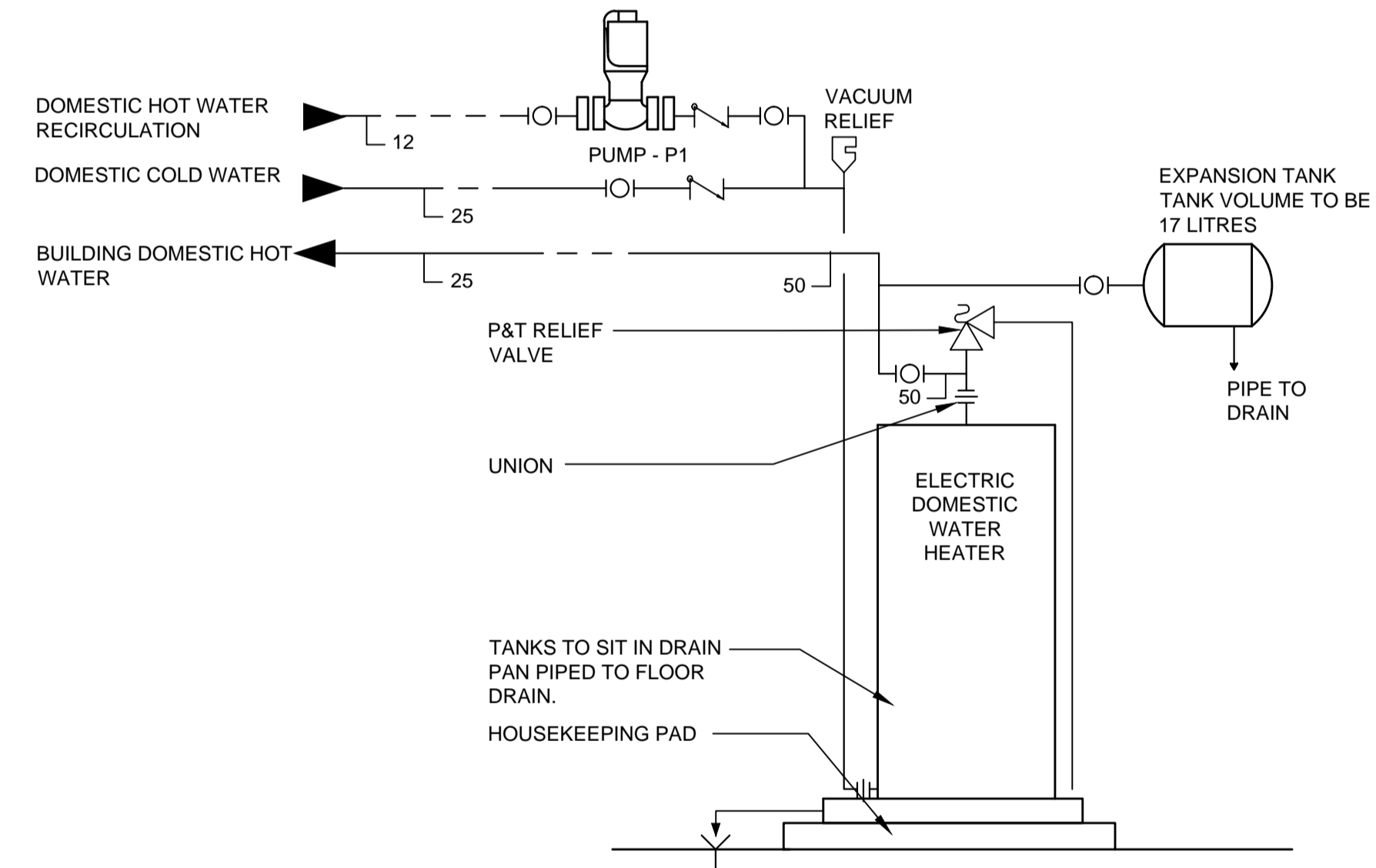
**TRAP SEAL PRIMER (GREATER THAN 4 OUTLETS)** 6 M501  
N.T.S.

MIN	MAX	DESCRIPTION
750mm	1500mm	HEIGHT FROM FLOOR TO CENTER LINE OF BFP
750mm	N/A	CLEAR SPACE IN FRONT OF BFP
150mm	N/A	CLEAR SPACE BEHIND BFP
300mm	N/A	CLEAR SPACE ABOVE BFP

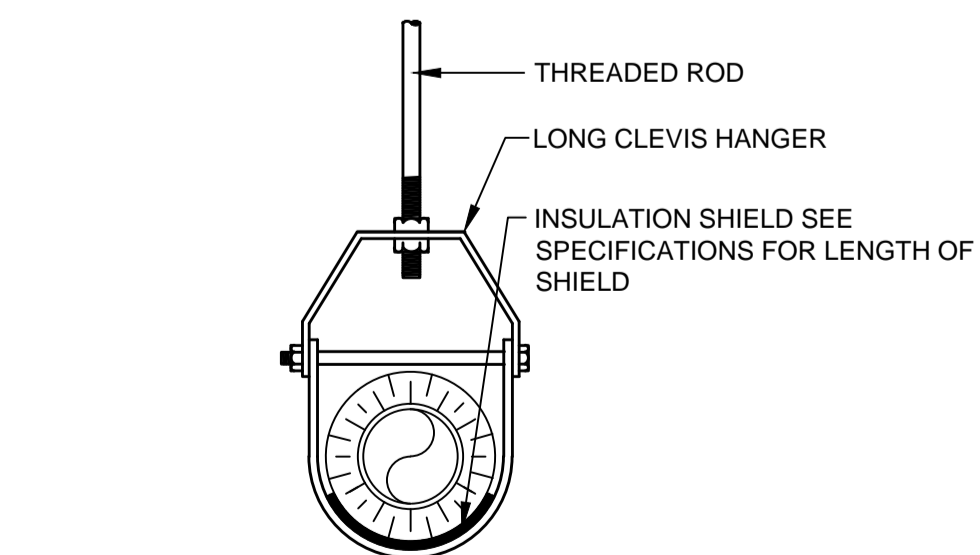
- DETAIL NOTES:
- 40mm REDUCED PRESSURE BACKFLOW PREVENTER, INSTALLED AS PER CAN/CSA-B64-10.
  - PROVIDE PIPE SUPPORTS AS REQUIRED AS PER PLUMBING CODE.
  - TESTING TEE, LOCKABLE GATE VALVE, MALE CAM-LOCK FITTING WITH DUST CAP. ASSEMBLY TO BE SAME SIZE AS BACKFLOW PREVENTER. TEST TEE TO BE MAX. 2000mm ABOVE FIN. FL. TO CENTER OF TEE.
  - 25mm MIN. AIR GAP. PIPE DRAIN TO NEAREST FLOOR DRAIN (DO NOT CONNECT).
  - MAIN SHUT-OFF VALVE. EPOXY COATED O.S.&Y GATE VALVE.
  - STRAINER.
  - SIGN.
  - PRESSURE REDUCING VALVE REQUIRED IF PRESSURE IS ABOVE 550kPa.



**DOMESTIC WATER ENTRANCE COMPONENTS DETAIL** 1 M501  
N.T.S.



**DOMESTIC HOT WATER TANKS DETAIL** 2 M501  
N.T.S.



**SUPPORT HANGER PIPE ATTACHMENT** 3 M501  
N.T.S.



PROVINCE OF NEWFOUNDLAND AND LABRADOR  
**pegni** ENGINEERING PERMIT J0291  
 STANTEC CONSULTING LTD.  
 04862  
 Signature or Member Number (Member-in-Responsible Charge)

0	ISSUED FOR TENDER	SEPT. 26, 2018
revisions		date

project GOCB BAY D'Espoir

Bay D'Espoir

drawing DETAILS

designed Brad Dawe conçu  
 date 08/07/18  
 drawn R.S. dessiné  
 date 08/07/18  
 approved Approver approuvé  
 date 08/07/18  
 Tender Soumission  
 PWGSC Project Manager / Administrateur de projets TPSGC  
 project number no. du projet

1005744

drawing no. no. du dessin  
 M501



PROVINCE OF NEWFOUNDLAND AND LABRADOR  
 ENGINEERING PERMIT J0291  
 STANTEC CONSULTING LTD.  
 04862  
 Signature or Member Number (Member-in-Responsible Charge)

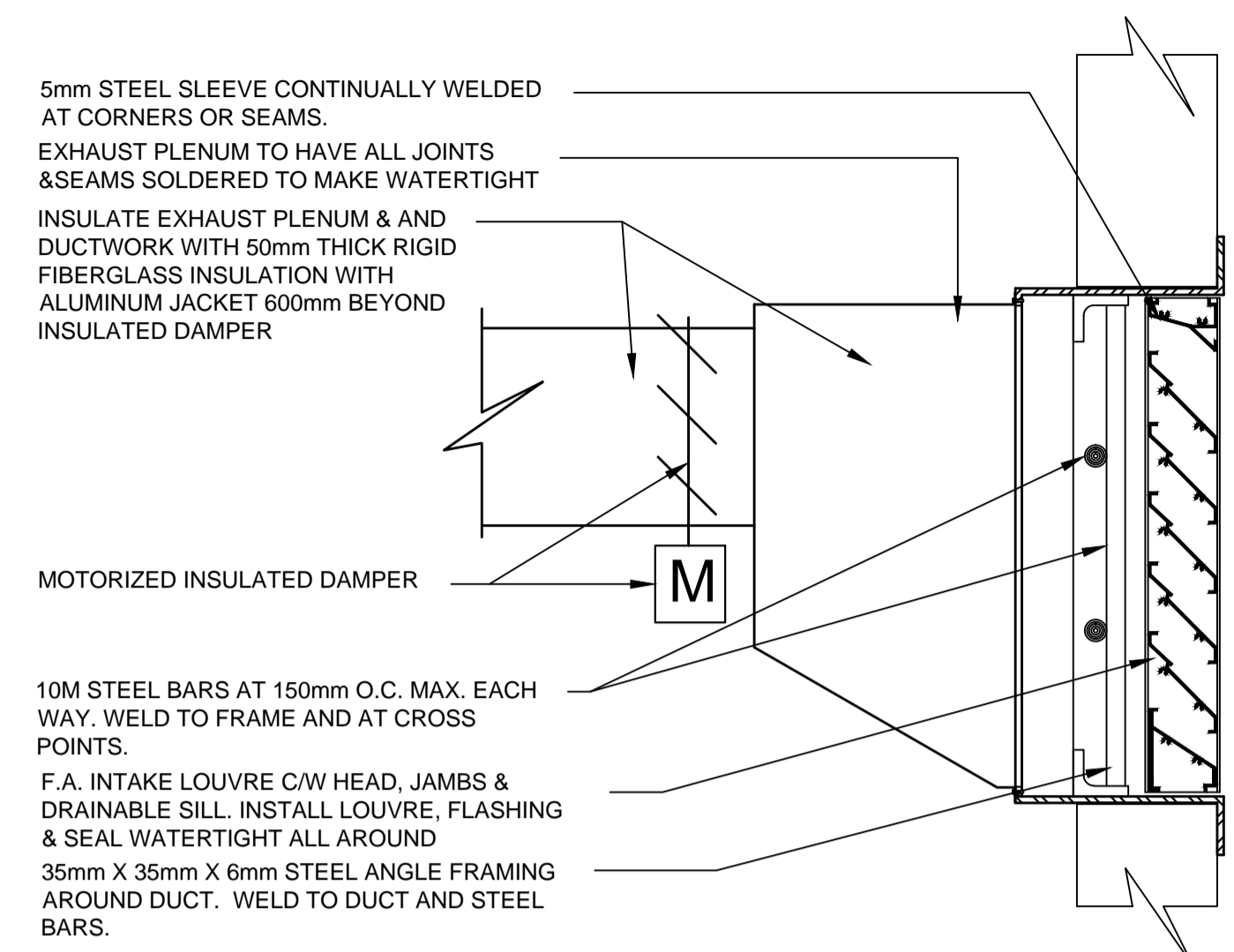
0	ISSUED FOR TENDER	SEPT. 26, 2018
revisions		date

project GOCB BAY D'Espoir

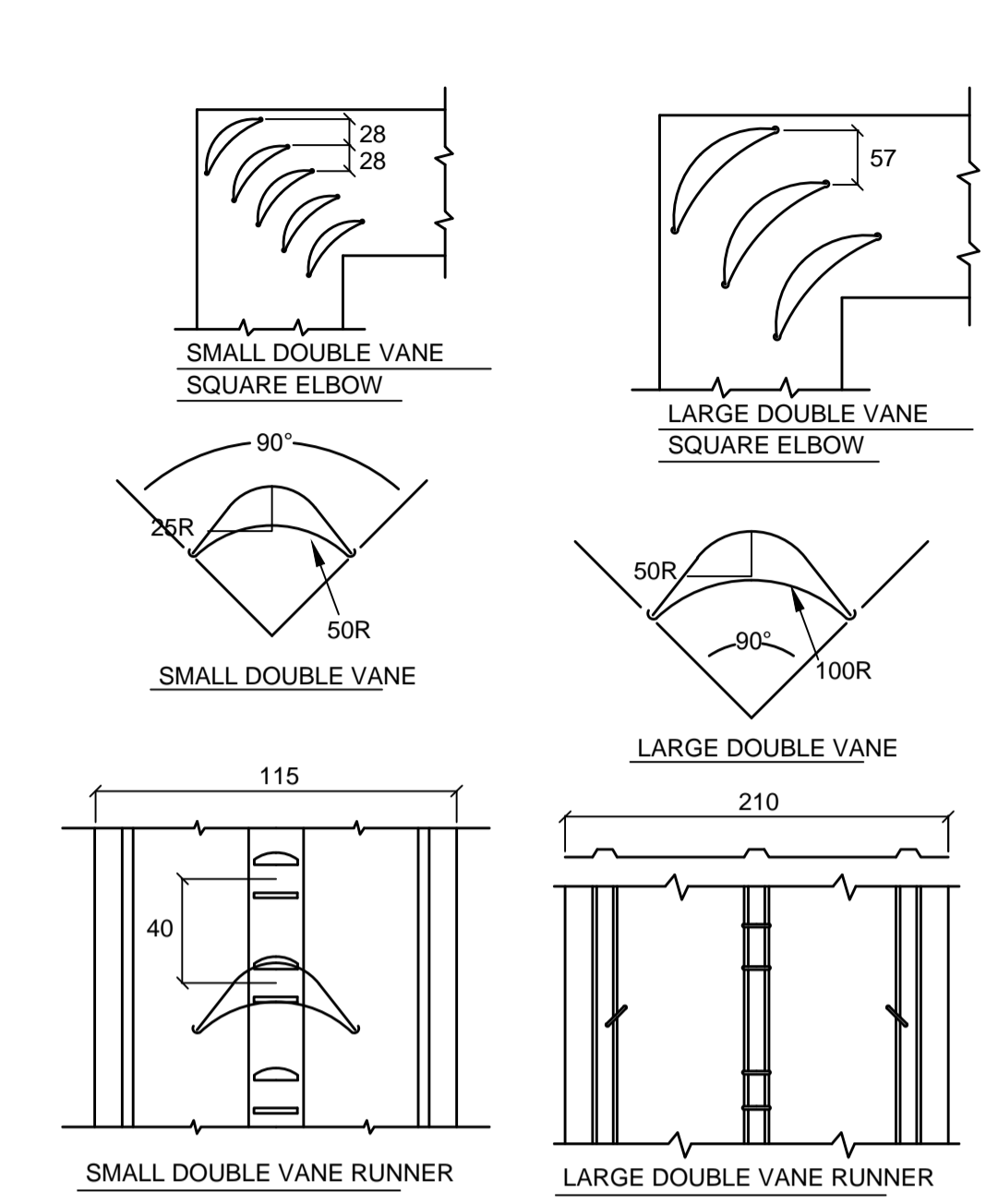
Bay D'Espoir

drawing details / dessin

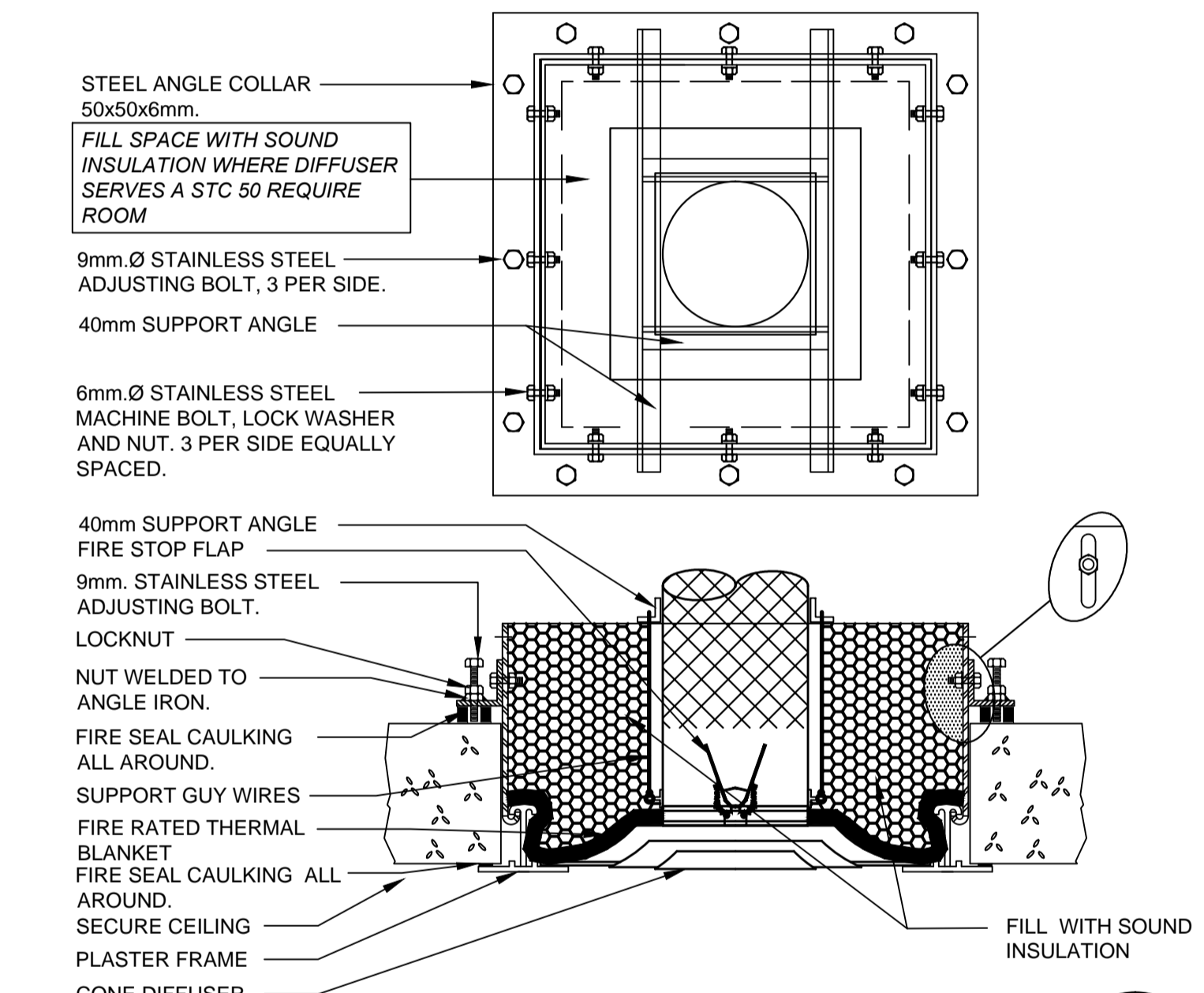
designed Brad Dawe	conçu
date 08/07/18	
drawn R.S.	dessiné
date 08/07/18	
approved Approver	approuvé
date 08/07/18	
Tender	Soumission
PWGSC Project Manager / Administrateur de projets TPWGC	
project number 1005744	no. du projet
drawing no. M502	no. du dessin



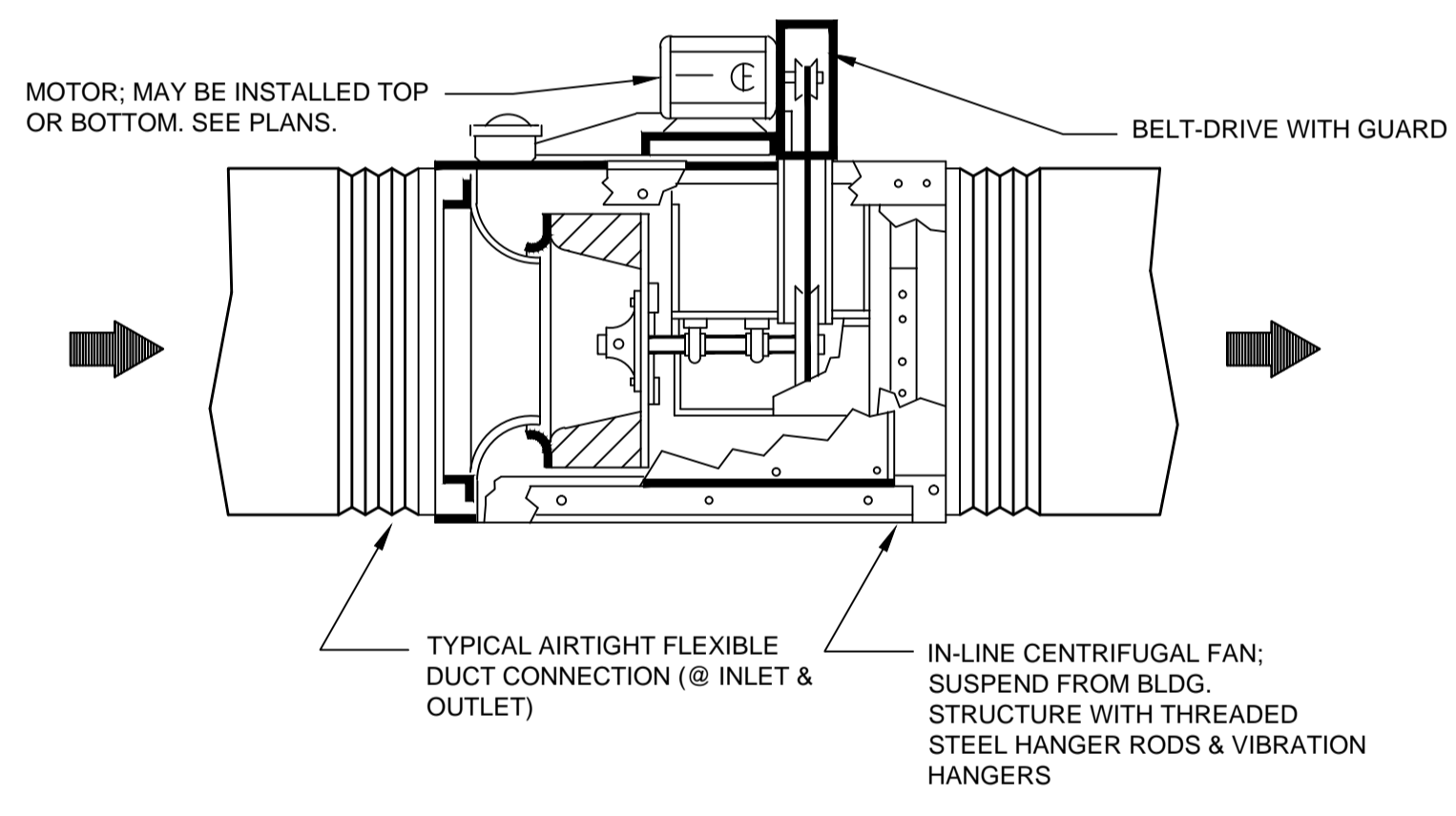
EXTERIOR WALL LOUVER AND PLENUM DETAIL 8 M502 N.T.S.



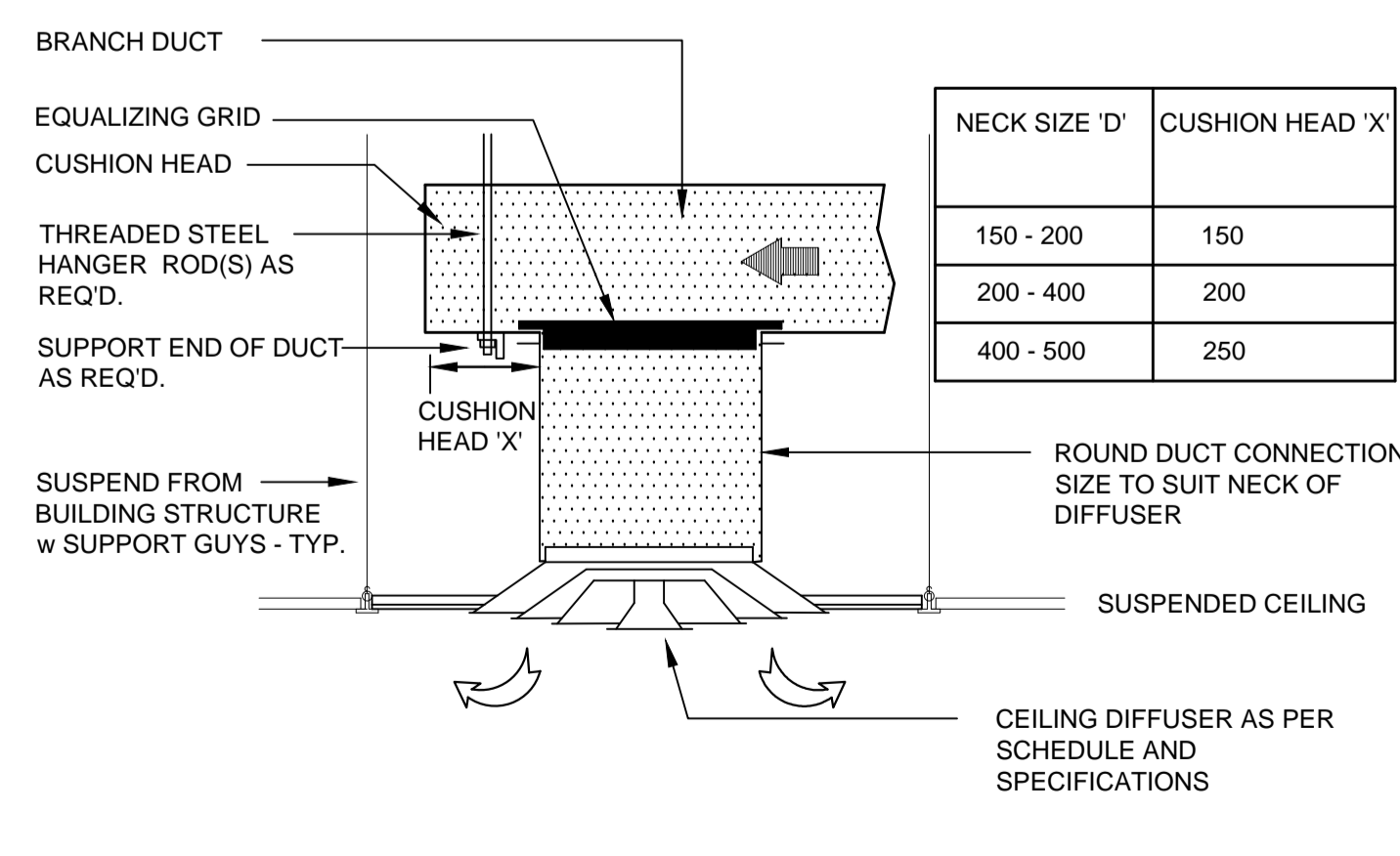
HOLLOW TURNING VANES 5 M502 N.T.S.



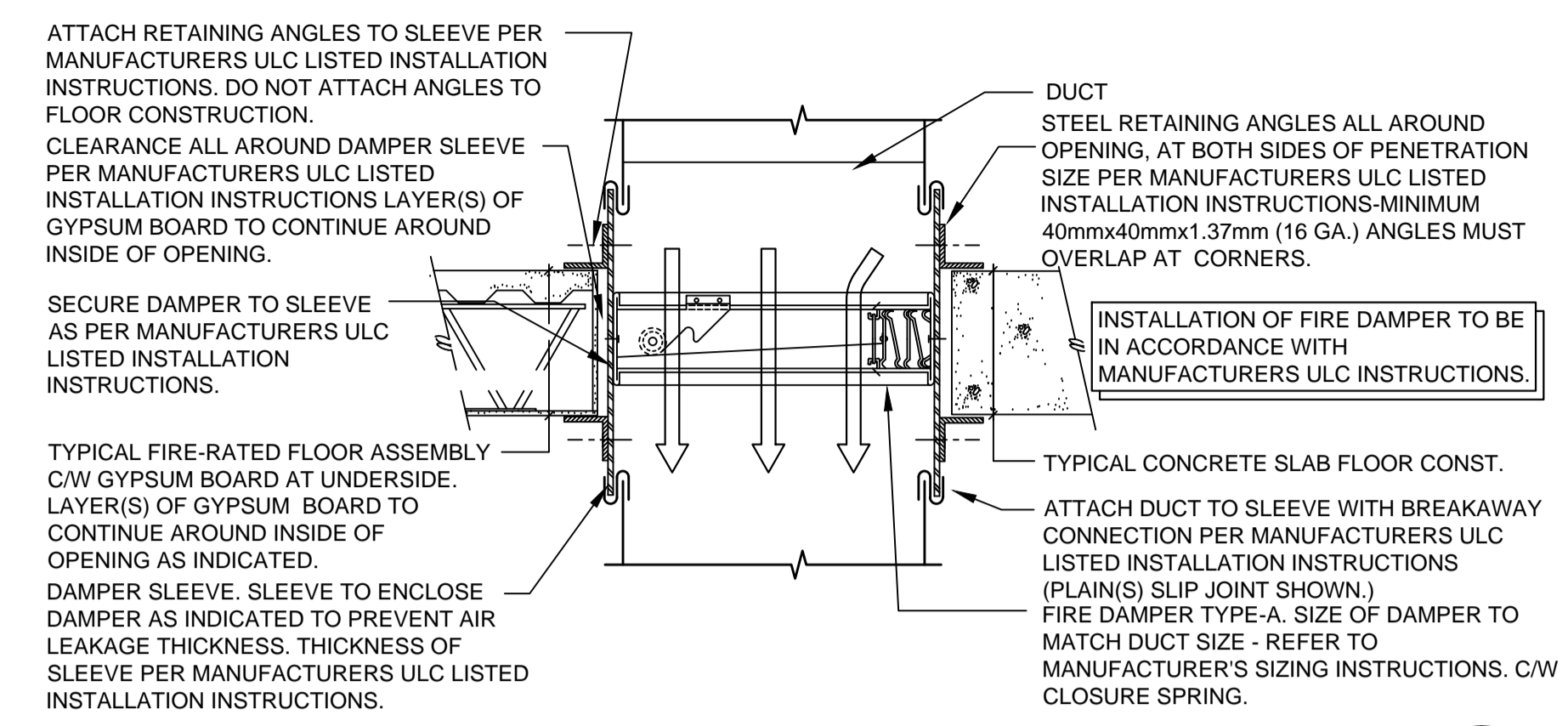
MOUNTING DETAIL FOR SA4 DIFFUSER DETAIL 9 M502 N.T.S.



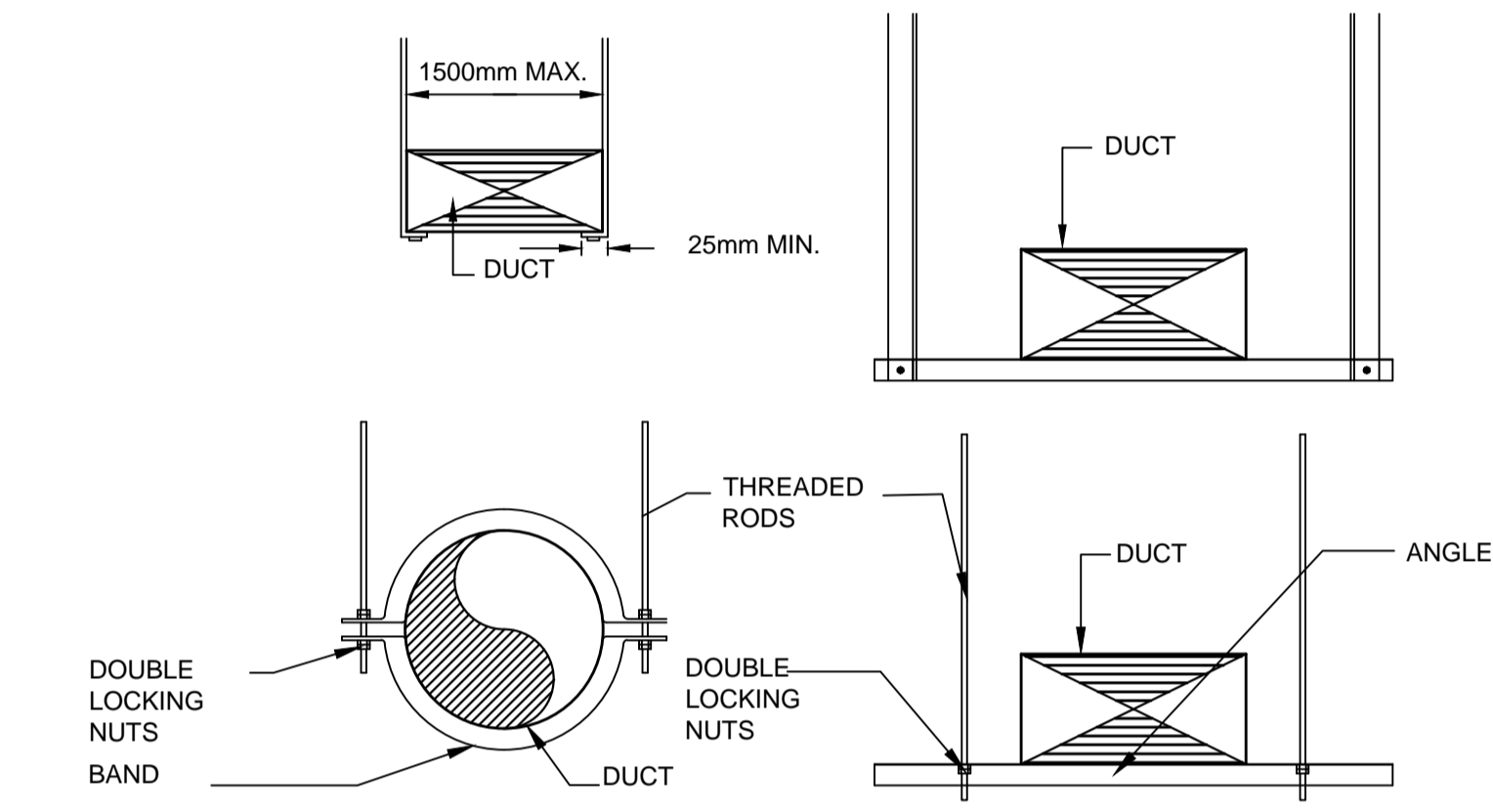
INLINE EXHAUST FAN DETAIL 6 M502 N.T.S.



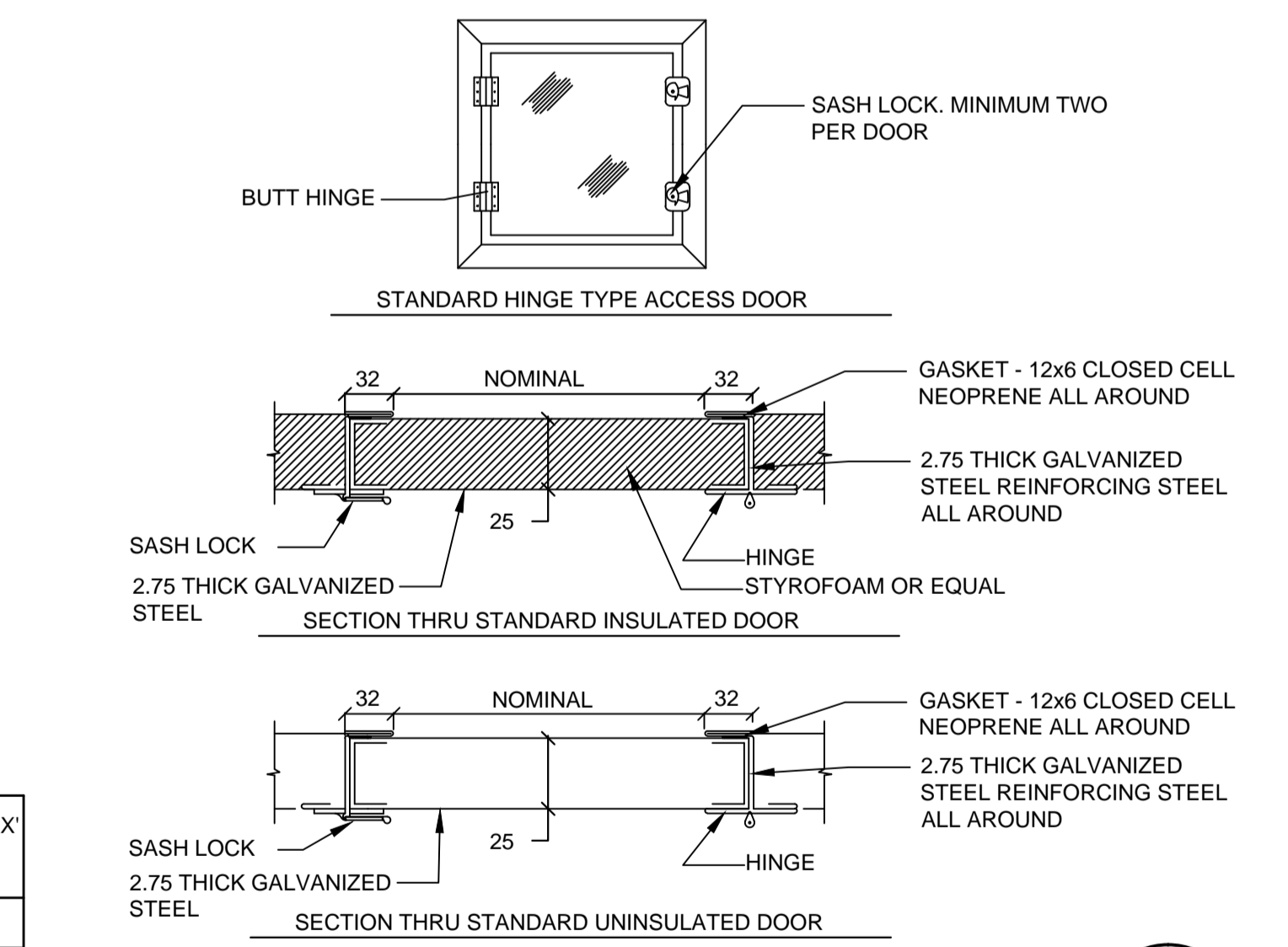
SUPPLY DIFFUSER CONNECTION DETAIL 7 M502 N.T.S.



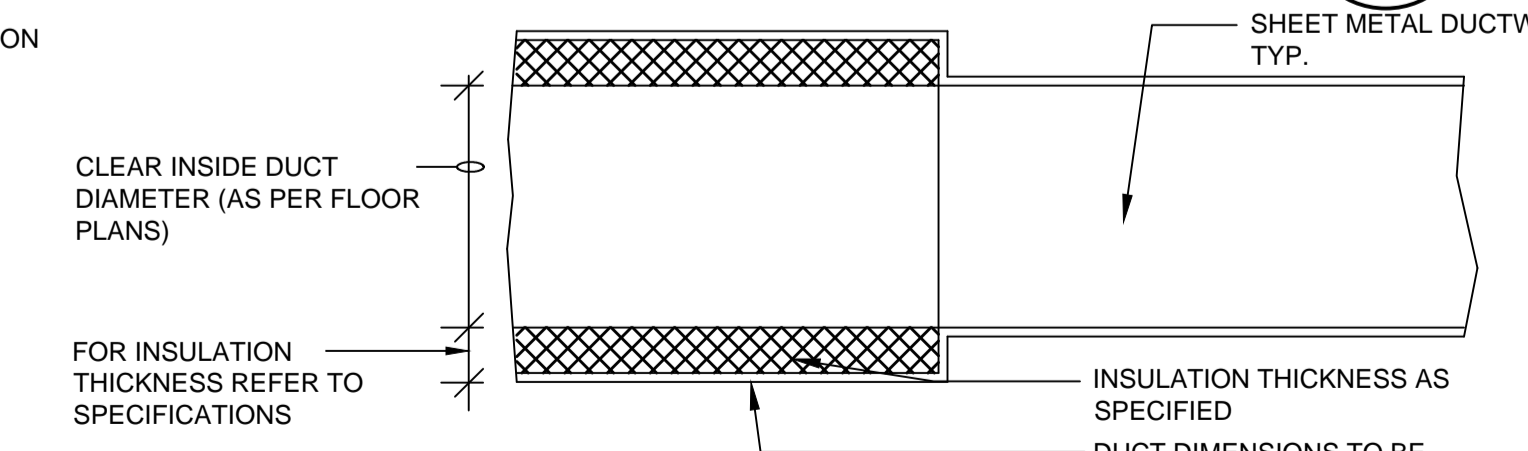
HORIZONTAL MOUNTED CURTAIN TYPE FIRE DAMPER - NON SECURE AREA 1 M502



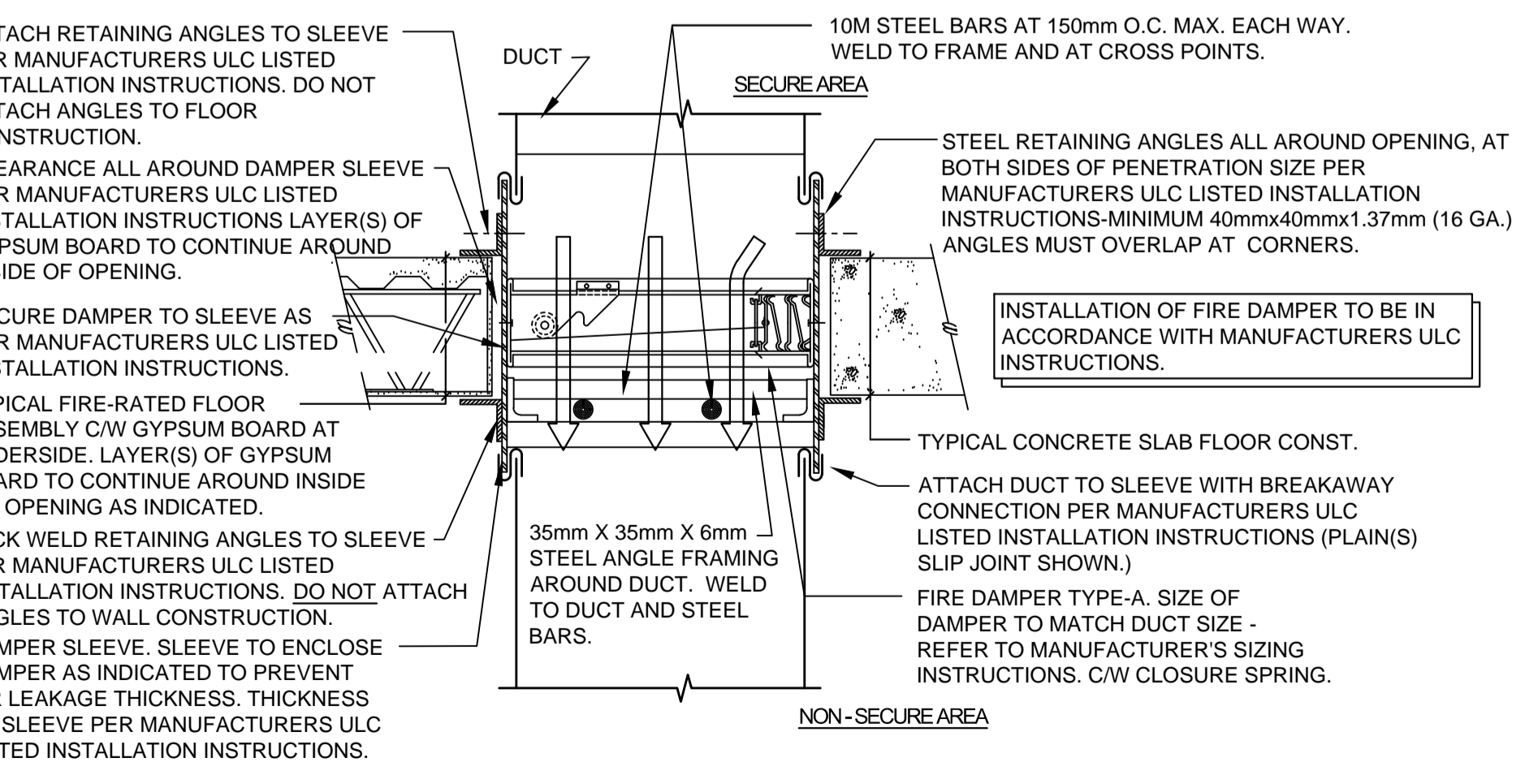
DUCT HANGERS 2 M502 N.T.S.



DUCT ACCESS DOOR 3 M502 N.T.S.



TYP. ACOUSTIC LINED DUCTWORK 4 M502 N.T.S.



HORIZONTAL MOUNTED CURTAIN TYPE FIRE DAMPER - SECURE AREA 10 M502 N.T.S.



GRILLE AND DIFFUSER SCHEDULE									
TAG	TYPE	DESCRIPTION	INLET SIZE	FACE SIZE	CEILING MODULE	MAXIMUM NC	MAX. STATIC PRESSURE	MOUNTING FRAME	REMARKS
SA-1	SUPPLY	ALUMINUM SQUARE CONE. RADIAL HORIZONTAL AIRFLOW PATTERN. PROVIDE SECTORIZING BAFFLES FOR IRREGULAR AIR PATTERN. SEE FLOOR PLANS	AS SHOWN	600x600	-	27	25 Pa	SURFACE MOUNT	PROVIDE BALANCING DAMPER IN THE BRANCH SUPPLY DUCT FOR THE DIFFUSER. PROVIDE CEILING FIRE DAMPER AND DIFFUSER PANEL FIRE BLANKET AS REQUIRED
SA-2	SUPPLY	ALUMINUM SQUARE CONE. RADIAL HORIZONTAL AIRFLOW PATTERN. PROVIDE SECTORIZING BAFFLES FOR IRREGULAR AIR PATTERN. SEE FLOOR PLANS	AS SHOWN	300x300	600x600	27	25 Pa	T-BAR LAYIN	PROVIDE BALANCING DAMPER IN THE BRANCH SUPPLY DUCT FOR THE DIFFUSER
SA-3	SUPPLY	ALUMINUM SQUARE CONE. RADIAL HORIZONTAL AIRFLOW PATTERN. PROVIDE SECTORIZING BAFFLES FOR IRREGULAR AIR PATTERN. SEE FLOOR PLANS	AS SHOWN	300x300	-	27	25 Pa	SURFACE MOUNT	PROVIDE BALANCING DAMPER IN THE BRANCH SUPPLY DUCT FOR THE DIFFUSER
SA-4	SUPPLY	ALUMINUM SQUARE CONE. RADIAL HORIZONTAL AIRFLOW PATTERN. PROVIDE SECTORIZING BAFFLES FOR IRREGULAR AIR PATTERN. SEE FLOOR PLANS	AS SHOWN	300x300	-	27	25 Pa	SURFACE MOUNT	PROVIDE BALANCING DAMPER IN THE BRANCH SUPPLY DUCT FOR THE DIFFUSER. PROVIDE CEILING FIRE DAMPER AND DIFFUSER PANEL FIRE BLANKET AS REQUIRED
EA-1	EXHAUST	STEEL CONSTRUCTION GRILLE 45° FIXED BLADES PARALLEL TO LONG DIM.	AS SHOWN	SEE DRAWING	-	27	25 Pa	T-BAR LAYIN	PROVIDE BALANCING DAMPER IN THE BRANCH SUPPLY DUCT FOR THE DIFFUSER
EA-2	EXHAUST	STEEL CONSTRUCTION GRILLE 45° FIXED BLADES PARALLEL TO LONG DIM.	AS SHOWN	SEE DRAWING	-	27	25 Pa	SURFACE MOUNT	PROVIDE BALANCING DAMPER IN THE BRANCH SUPPLY DUCT FOR THE DIFFUSER
EA-3	EXHAUST	STEEL CONSTRUCTION GRILLE 45° FIXED BLADES PARALLEL TO LONG DIM.	AS SHOWN	SEE DRAWING	-	27	25 Pa	SURFACE MOUNT	PROVIDE BALANCING DAMPER IN THE BRANCH SUPPLY DUCT FOR THE DIFFUSER. PROVIDE CEILING FIRE DAMPER AND GRILLE. PANEL FIRE BLANKET AS REQUIRED
DG-1	TRANSFER	STEEL CONSTRUCTION SIGHT PROOF CORE WITH FLAT BORDER BOTH SIDES	AS SHOWN	SEE DRAWING	-	27	25 Pa	SURFACE MOUNT	

HEAT RECOVERY VENTILATOR UNIT SCHEDULE												
TAG	DESCRIPTION	PRICE - SCDA	DESIGN AIR OUTDOOR VOLUME (L/S)	DESIGN EXHAUST AIR VOLUME (L/S)	AHRI 1060 EFFECTIVENESS		EXTERNAL STATIC PRESSURE @ Pa	FILTER MERV	MOTOR KW		ELECTRICAL DATA V/0/Hz	ACCESSORIES AND NOTES
					WINTER	SUMMER			SUPPLY	RETURN		
HRV-1	STATIC PLATE HEAT RECOVERY VENTILATOR		183	183	63%	52%	100	13	0.448	0.448	230/1/60	1, 2, 3, 4, 5, 6, 7, 8, 9, 10, 11
HRV-2	STATIC PLATE HEAT RECOVERY VENTILATOR		280	280	63%	52%	125	13	0.560	0.560	230/1/60	1, 2, 3, 4, 5, 6, 7, 8, 9, 10, 11
HRV-3	STATIC PLATE HEAT RECOVERY VENTILATOR		95	95	63%	52%	100	13	0.448	0.448	230/1/60	1, 2, 3, 4, 5, 6, 7, 8, 9, 10, 11

1. ZERO CROSS CONTAMINATION BETWEEN SUPPLY AND RETURN STREAMS  
 2. FACTORY MOUNTED FILTER ALARMS  
 3. FUSED DISCONNECT  
 4. BACKDRAFT DAMPERS  
 5. 24VAC TRANSFORMER / RELAY PACKAGE  
 6. MOTORIZED ISOLATION DAMPERS ON BOTH AIR STREAMS  
 7. FLOOR MOUNTING FEET  
 8. DOUBLE WALL CONSTRUCTION  
 9. INDEPENDENT BLOWER CONTROL  
 10. ENTHALPY CONTROL  
 11. ECM MOTOR PACKAGE

NOTE: REFER TO MECHANICAL SPECIFICATIONS FOR MORE INFORMATION.

FAN SCHEDULE																
FAN TAG	FAN LOCATION	FAN APPLICATION	FAN DATA				ROOF CURB		VIBRATION ISOLATION			MOTOR DATA				REMARKS
			TYPE	DRIVE	L/S	S.P.-Pa	TYPE	OPENING SIZE-mm	TYPE	OUTPUT KWS	VOLTS	PHASE	CYCLES			
EF-1	ROOM 116	GENERAL EXHAUST	WALL MOUNTED	DIRECT	95	120	-	-	-	0.075	120	1	60	C/W SPEED CONTROLLER. SUPPLIED BY DIV. 23 INSTALLED BY DIV. 26		
EF-2	ROOM 124	GENERAL EXHAUST	INLINE	DIRECT	122	125	-	-	RUBBER IN SHEAR	0.125	120	1	60	C/W DISCONNECT SWITCH. SUPPLIED BY DIV. 23 INSTALLED BY DIV. 26		
EF-3	ROOM 301	GENERAL EXHAUST	INLINE	DIRECT	472	115	-	-	RUBBER IN SHEAR	0.338	120	1	60	C/W MANUAL STARTER SUPPLIED AND INSTALLED BY DIV. 26		

PLENUM DUCT SILENCER SCHEDULE (BASED ON MINIMUM SILENCER RATING OF STC 50)					
SILENCER TAG	STANDARD OF ACCEPTANCE	ROOM #	DUCT SIZE	SILENCER SIZE	AIRFLOW L/S
PSL-1	RECTANGULAR CROSS TALK SILENCER	105	200x100	400x300	40
PSL-2	RECTANGULAR CROSS TALK SILENCER	103	200x100	400x300	40
PSL-3	RECTANGULAR CROSS TALK SILENCER	103	200x100	400x300	40
PSL-4	RECTANGULAR CROSS TALK SILENCER	122	150x100	350x300	25
PSL-5	RECTANGULAR CROSS TALK SILENCER	122	150x100	350x300	25
PSL-6	RECTANGULAR CROSS TALK SILENCER	122	150x100	350x300	25

DUCT HEATER SCHEDULE										
LOCATION AND ROOM SERVED	UNIT NO.	TYPE OF HEATER	AIR FLOW L/S.	KW	VOLTS	PHASE	CYCLES	EAT	LAT	COMMENTS
ATTIC	DH-1	ELECTRIC	280	7	240	1	60	13	21	C/W DISCONNECTS AND ALL SAFETIES. (SEE NOTE 2.)
ATTIC	DH-2	ELECTRIC	95	1	240	1	60	13	21	C/W DISCONNECTS AND ALL SAFETIES. (SEE NOTE 2.)
ATTIC	DH-3	ELECTRIC	183	2	240	1	60	13	21	C/W DISCONNECTS AND ALL SAFETIES. (SEE NOTE 2.)

- NOTES:
- SEE FLOOR PLAN FOR DUCT SIZE. PROVIDE TRANSITIONS AS REQUIRED.
  - DUCT HEATERS SHALL BE EQUIPPED WITH MAGNETIC CONTACTORS AS REQUIRED, 24 VOLTS TRANSFORMER, AIRFLOW SENSOR, DUCT THERMOSTAT, HIGH LIMIT SCR CONTROL, LOAD FUSES, SOLID STATE RELAYS, MERCURY CONTACTORS, PILOT LIGHTS, AND PROTECTIVE SCREENS.

CONDENSING UNIT SCHEDULE										
TAG	MOUNTING	SYSTEM TYPE	COOLING CAPACITY (KW)	HEATING CAPACITY (KW)	MOTOR DATA				REMARKS	
					MCA (A)	MOC (A)	VOLTS	PHASE		CYCLES
CU-1	SUPPORT STAND	COOLING ONLY	10.55	12.31	-	-	230	1	60	C/W ALL REFRIGERATION PIPING AND CONTROLS

WALL MOUNTED EVAPORATOR UNIT SCHEDULE										
TAG	TYPE	SYSTEM TYPE	COOLING CAPACITY (KW)	HEATING CAPACITY (KW)	MOTOR DATA				REMARKS	
					OUTPUT KWS	VOLTS	PHASE	CYCLES		
EV-1	WALL MTD	SINGLE ZONE	5.28	5.86	-	-	230	1	60	C/W ALL REFRIGERATION PIPING AND CONTROLS
EV-2	WALL MTD	SINGLE ZONE	1.83	1.96	-	-	230	1	60	C/W ALL REFRIGERATION PIPING AND CONTROLS
EV-3	WALL MTD	SINGLE ZONE	1.83	1.96	-	-	230	1	60	C/W ALL REFRIGERATION PIPING AND CONTROLS

PUMP SCHEDULE											
PUMP NO.	LOCATION	TYPE	APPLICATION	CONNECTIONS	L/S	kPa	MOTOR DATA				REMARKS
							VOLTS	PHASE	HP (kw)	SPEED (rpm)	
P-1	ROOM 107	WET ROTOR	DHW RECIRC	12x12	0.10	7	115	1	0.007	-	C/W PUMP WITH BUILT-IN TEMPERATURE SENSOR-

NOTE: REFER TO MECHANICAL SPECIFICATIONS FOR DESCRIPTIONS.



PROVINCE OF NEWFOUNDLAND AND LABRADOR

Engineering PERMIT J0291

STANTEC CONSULTING LTD.

04862

Signature or Member Number (Member-in-Responsible Charge)

0	ISSUED FOR TENDER	SEPT. 26, 2018
revisions		date

project GOCB BAY D'Espoir

Bay D'Espoir

drawing SCHEDULES dessin

designed Brad Dawe conçu

date 08/07/18

drawn R.S. dessiné

date 08/07/18

approved Approver approuvé

date 08/07/18

Tender Soumission

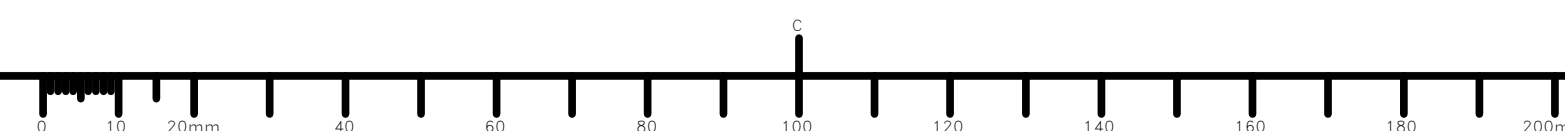
PWGSC Project Manager Administrateur de projets TPJSGC

project number no. du projet

1005744

drawing no. no. du dessin

M701





PROVINCE OF NEWFOUNDLAND AND LABRADOR  
 ENGINEERING PERMIT J0291  
 STANTEC CONSULTING LTD.  
 04862  
 Signature or Member Number (Member-in-Responsible Charge)

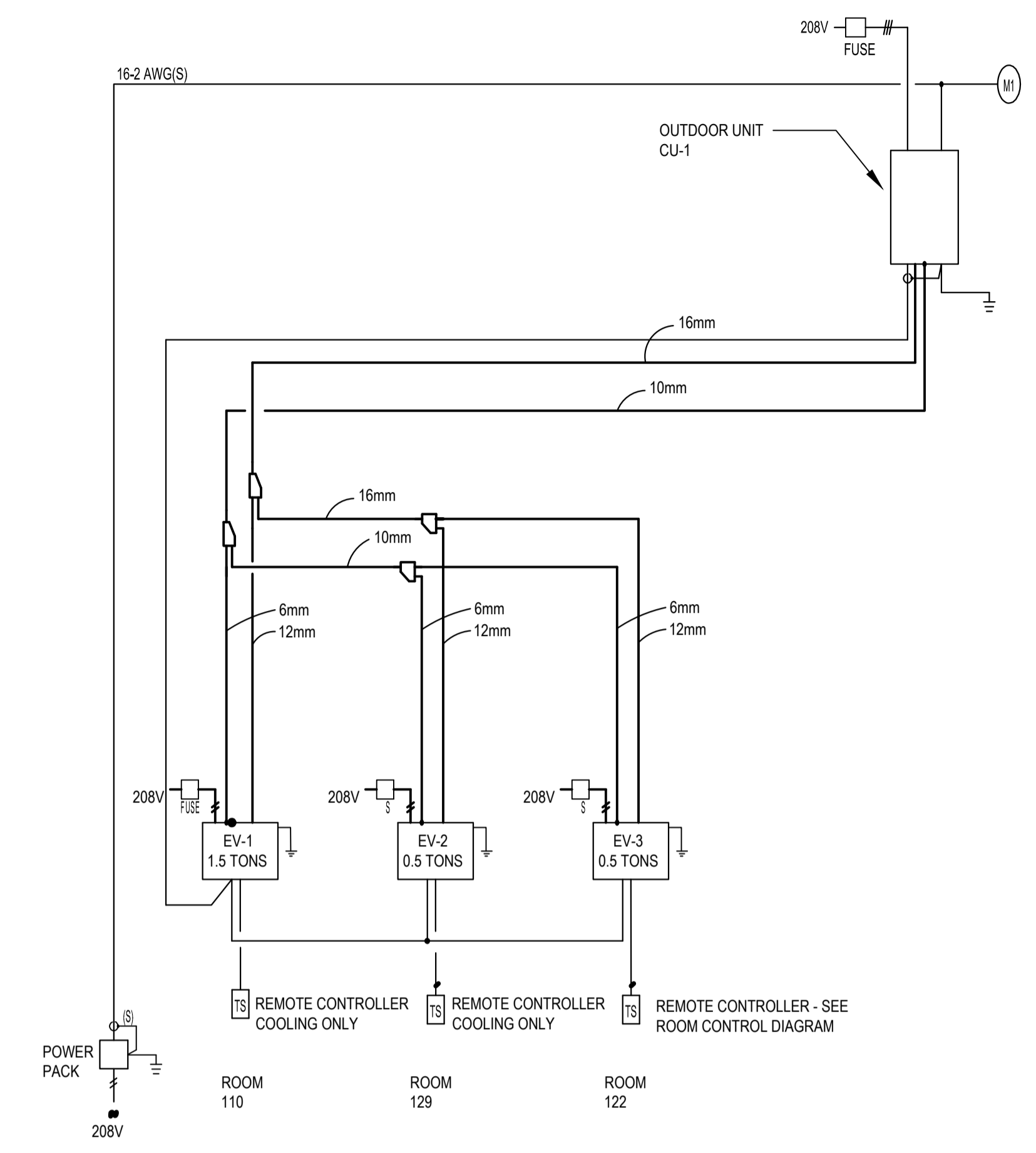
0	ISSUED FOR TENDER	SEPT. 26, 2018
revisions		date

project GOCB BAY D'Espoir

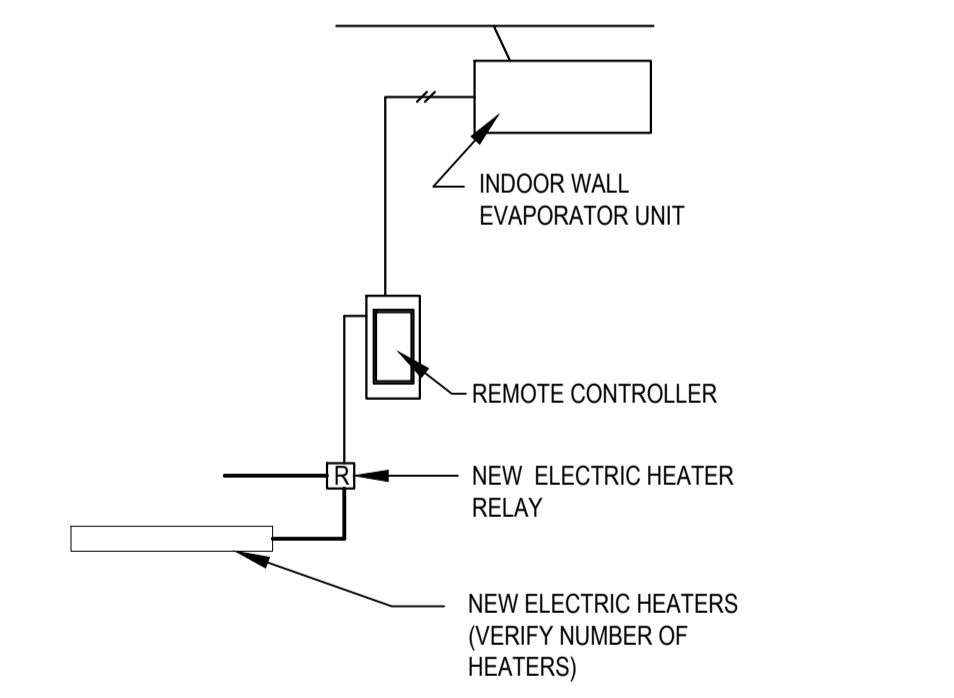
Bay D'Espoir

drawing CONTROLS dessin

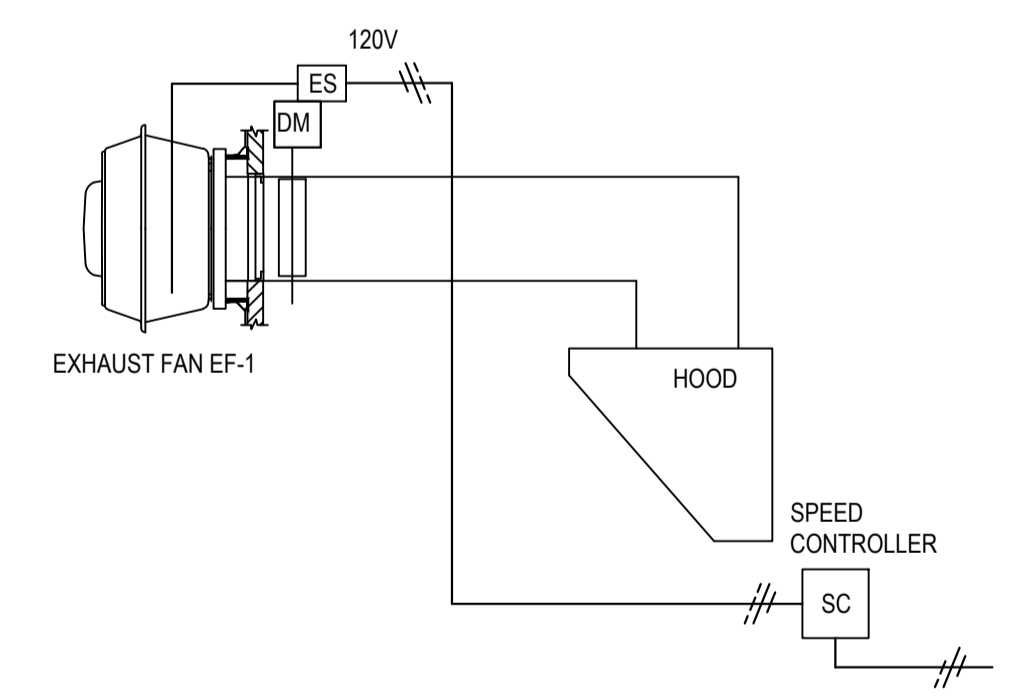
designed Brad Dawe	conçu
date 08/07/18	
drawn R.S.	dessiné
date 08/07/18	
approved Approver	approuvé
date 08/07/18	
Tender	Soumission
PWGSC Project Manager Administrateur de projets TPSGC	
project number 1005744	no. du projet
drawing no. M801	no. du dessin



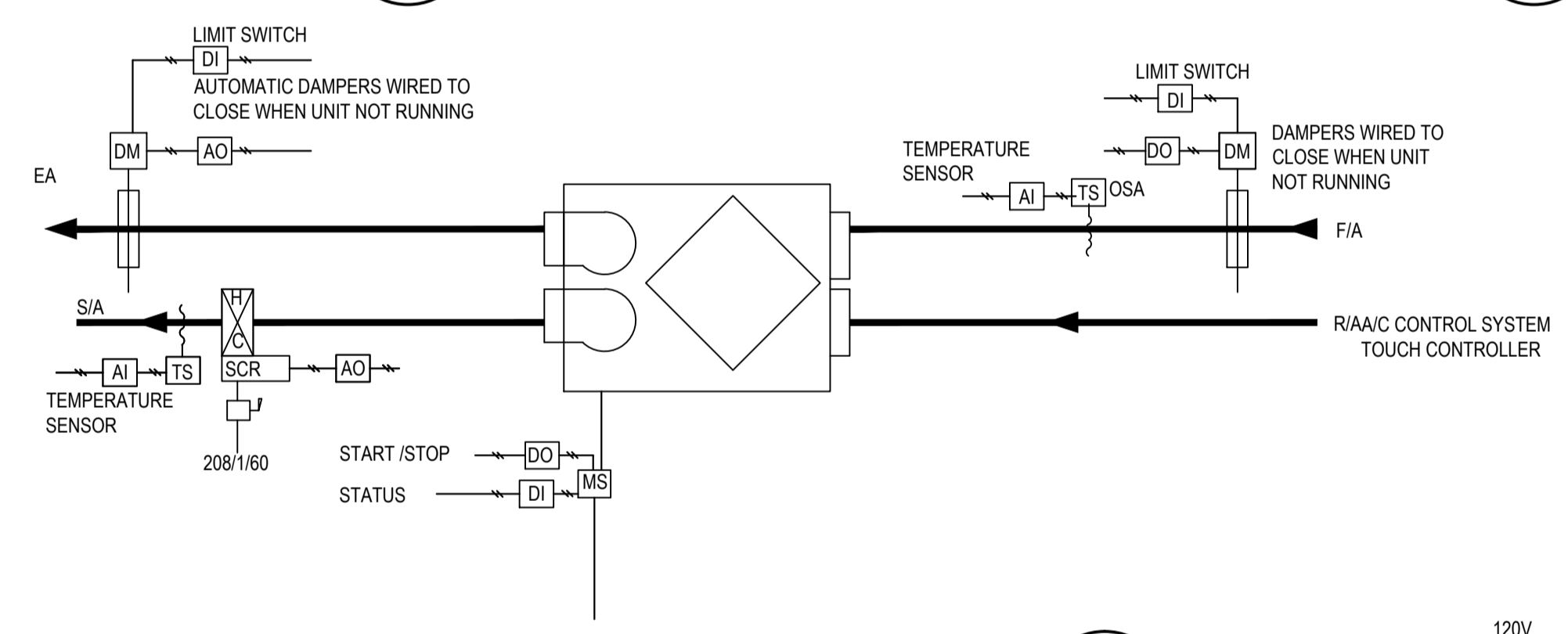
FLOW SCHEMATIC AND PIPE SIZING 1 M801  
 N.T.S.



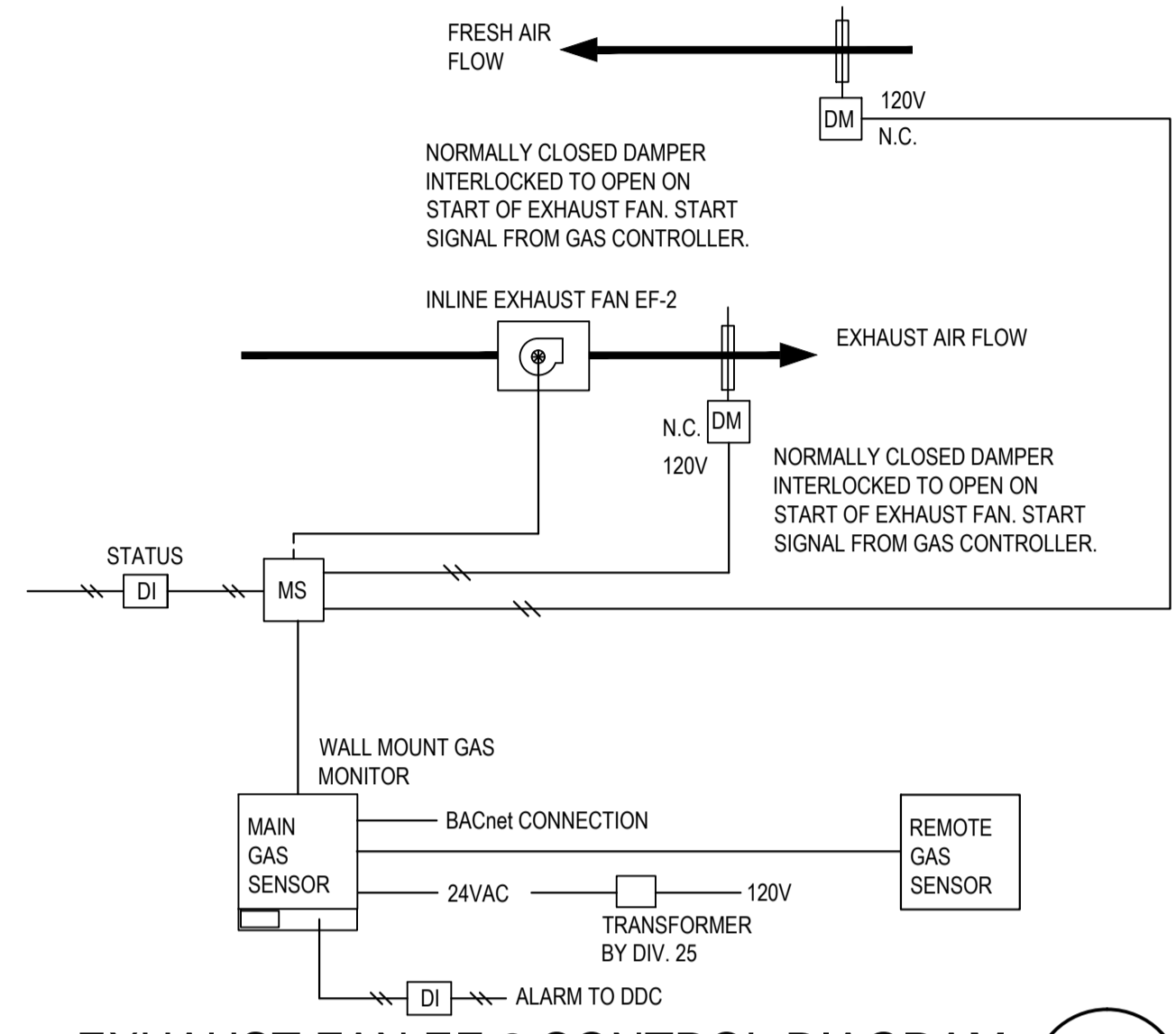
ROOM 122 CONTROL DIAGRAM WITH INDOOR WALL EVAPORATOR UNIT N.T.S. 2 M801



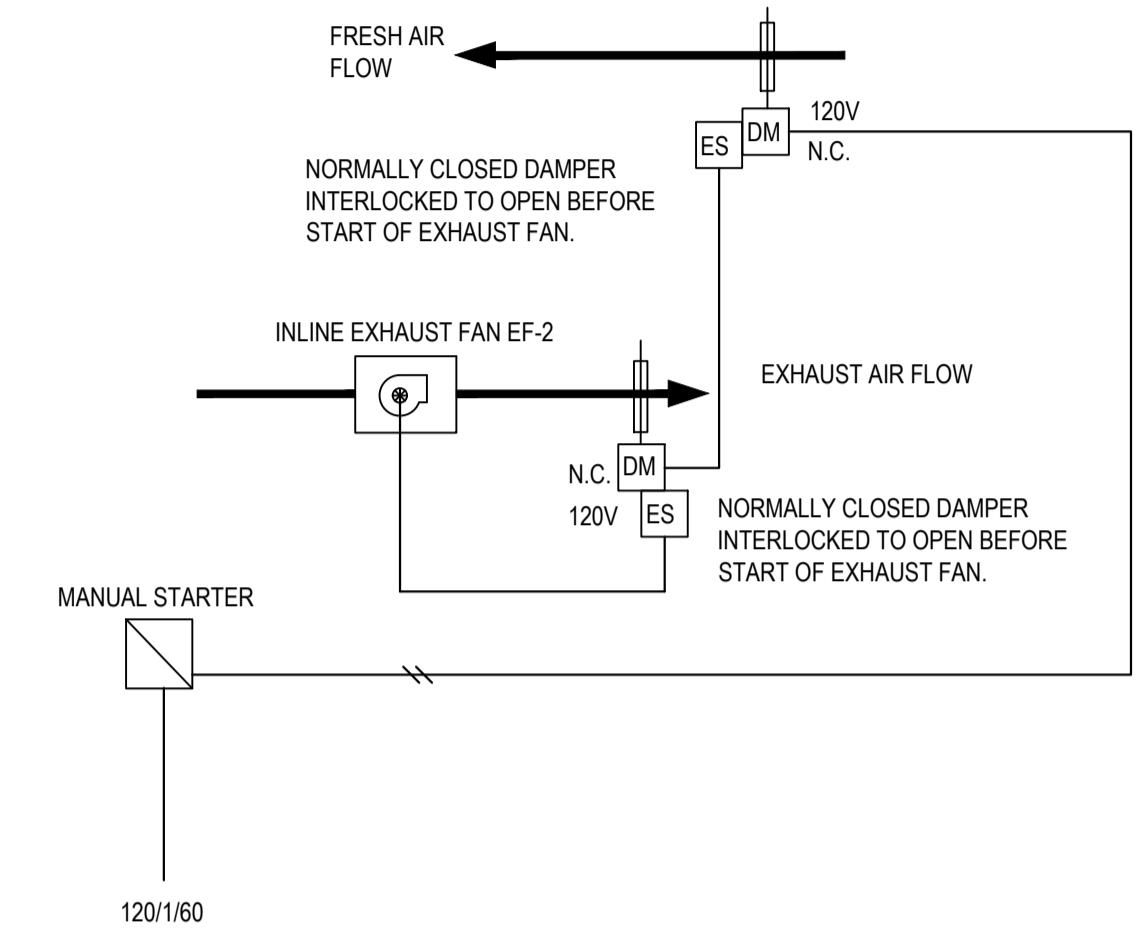
CEILING EXHAUST FAN EF-1 N.T.S. 4 M801



DDC CONTROL FOR PACKAGED HRV - 1, 2 & 3 5 M801  
 N.T.S.



EXHAUST FAN EF-2 CONTROL DIAGRAM 3 M801  
 N.T.S.



EXHAUST FAN EF-3 CONTROL DIAGRAM 6 M801  
 N.T.S.

