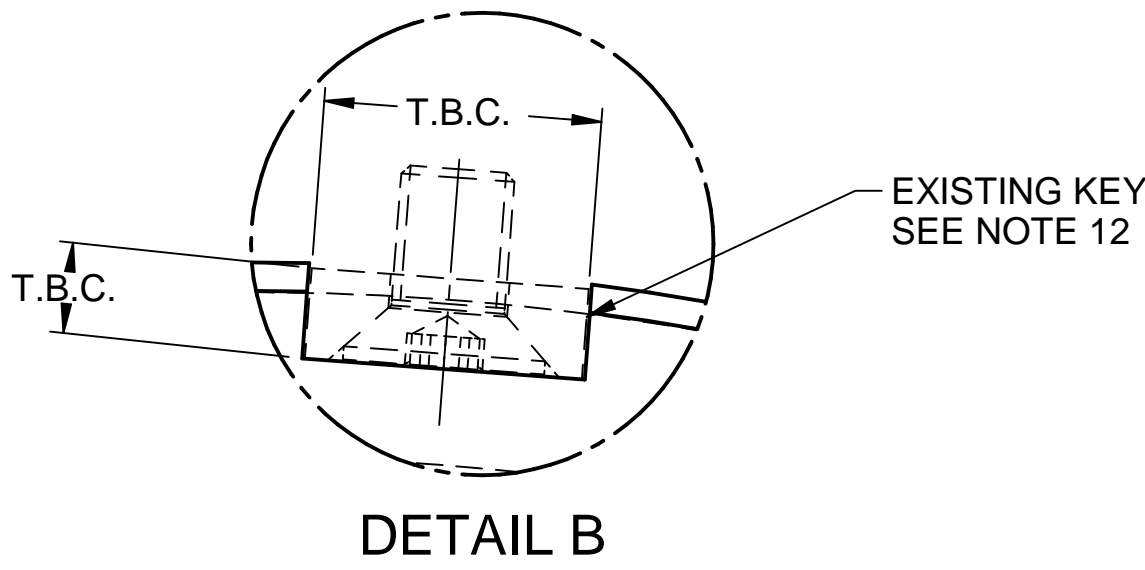
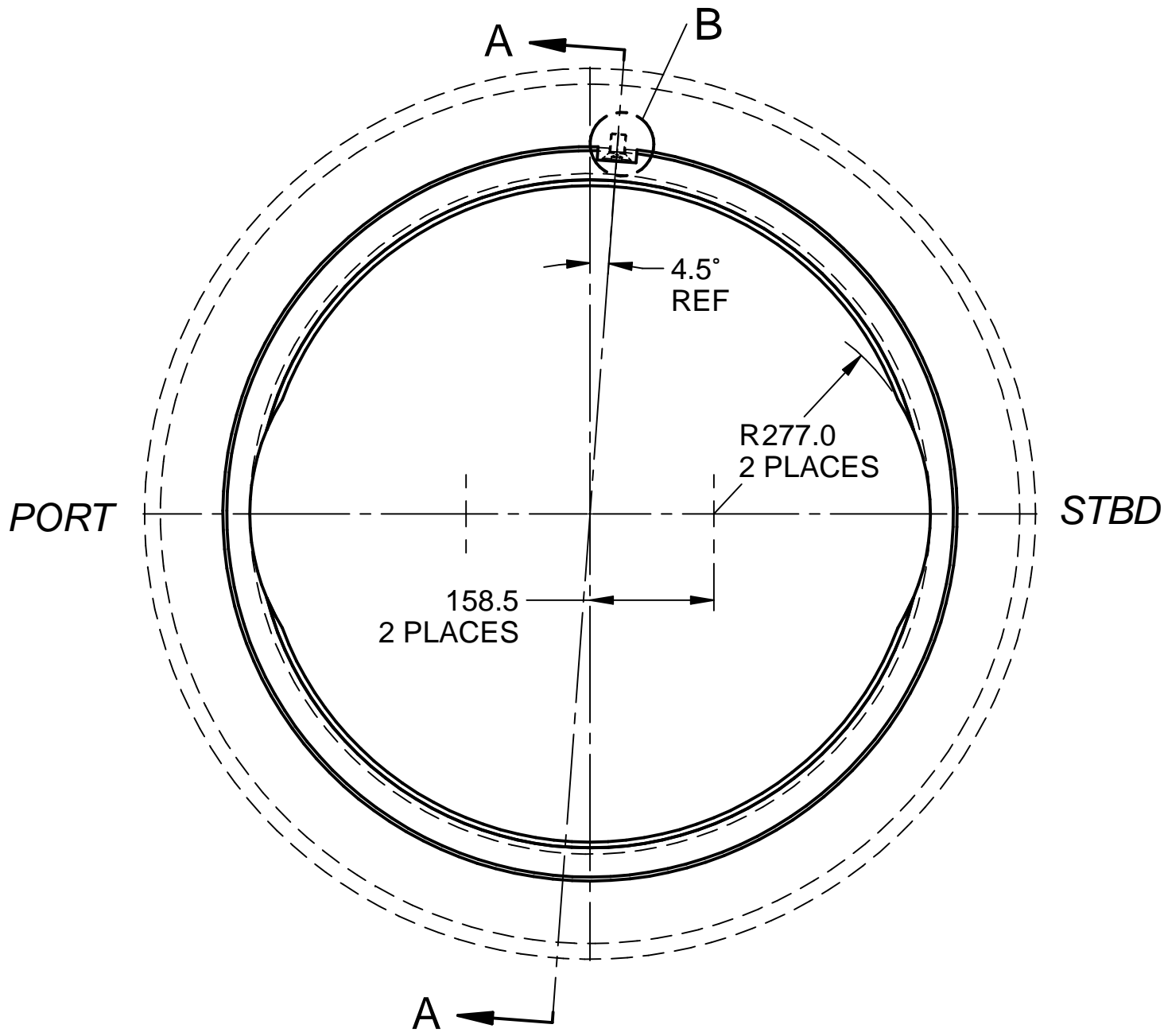
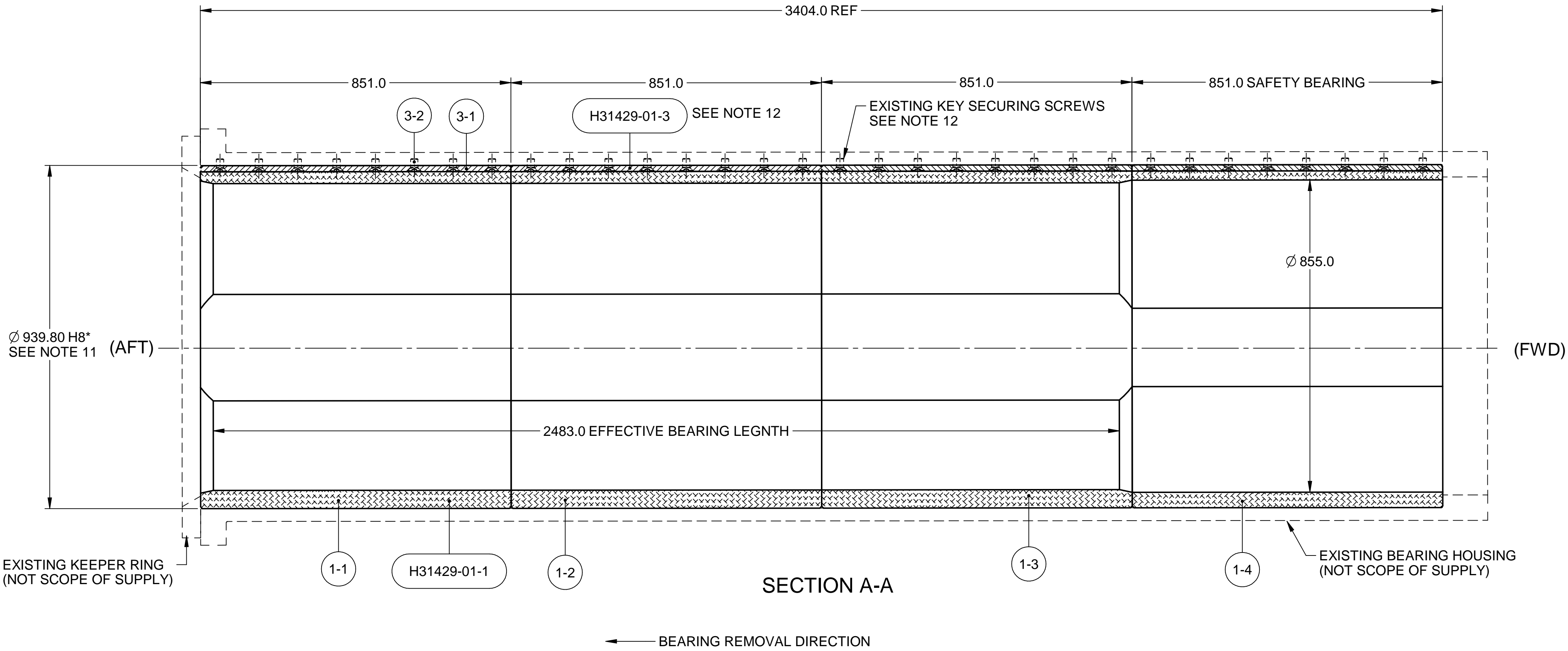
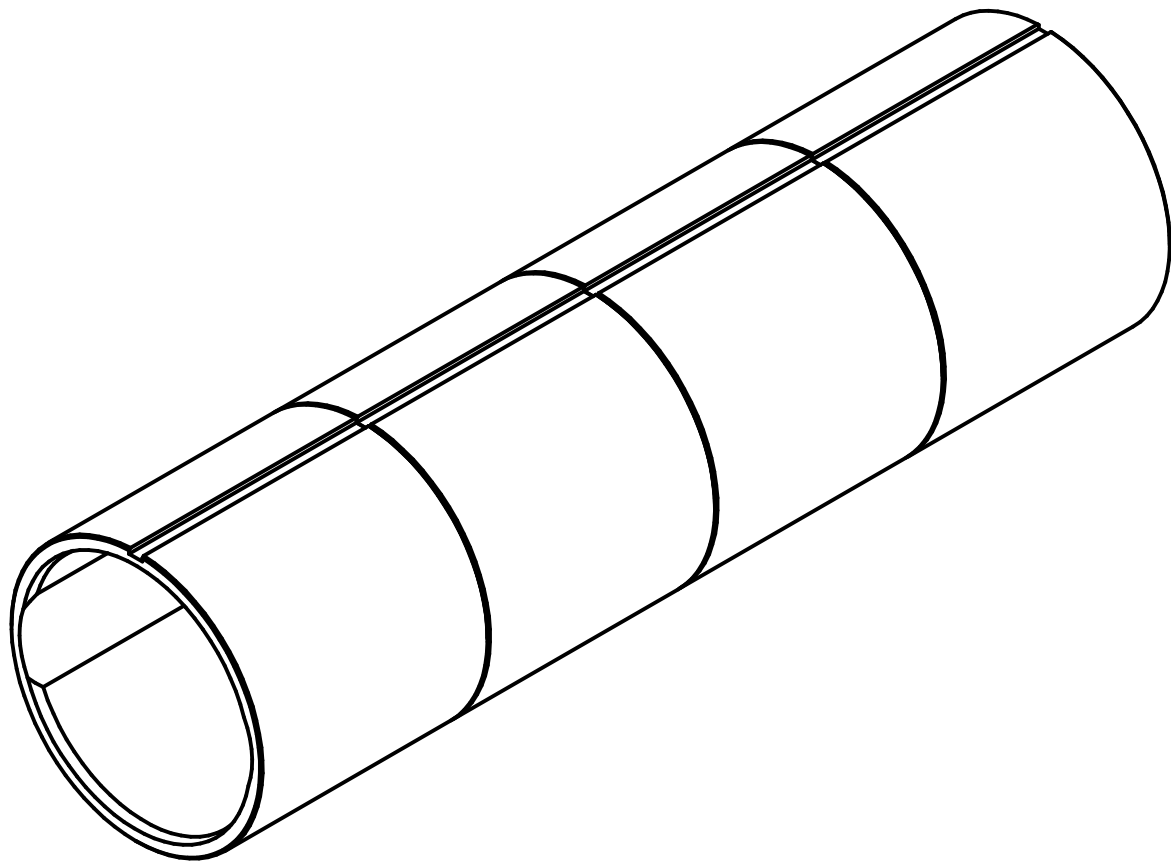


CUSTOMER TO CONFIRM ALL DIMENSIONS AND BEARING ARRANGEMENT.

DRAWING POSn	DESCRIPTION	MATERIAL	QTY
H31429-01 -1	AFT STERN TUBE BEARING ASSEMBLY		0
-1-1	AFT BEARING	COMPOSITE	1
-1-2	MIDDLE BEARING	COMPOSITE	1
-1-3	FWD BEARING	COMPOSITE	1
-1-4	SAFETY BEARING	COMPOSITE	1
SPARE PARTS TABLE			
H31429-01 -2	SPARE PARTS		1
-2-1	STERN TUBE BEARING SEMI-FINISHED	COMPOSITE	4
OPTIONAL PARTS TABLE			
H31429-01 -3	ANTI-ROTATION KEY ASSEMBLY	OPTIONAL	0
-3-1	KEY	ALUMINIUM BRONZE	2
-3-2	SCREW	STAINLESS STEEL	32



- NOTES:
- ALL DIMENSIONS IN MILLIMETRES
  - TOLERANCES, UNLESS OTHERWISE STATED.
    - LINEAR  $\pm 0.25$
    - ANGULAR  $\pm 1^\circ$
  - BEARINGS TO BE DESIGNED AND INSTALLED IN ACCORDANCE WITH WARTSILA MANUAL DPM-01.
  - BEARINGS CAN BE PRESS OR FREEZE FITTED IN PLACE.CUSTOMER TO CONFIRM.
  - MIN WATER FLOW IS 126 L/MIN.
  - IT IS ASSUMED THAT THE BEARING HOUSING WILL BE REMOVED FROM THE VESSEL AND TAKE IT TO WORKSHOP FOR BEARING FITTING AND I/D MACHINIG. THE INSIDE DIAMETER SHOULD BE CONFIRMED IN 3 PLACES WITHIN 840.21 / 840.55\* (SEE NOTE 11).
  - BEARING REMOVAL DIRECTION ASSUMED FROM AFT END.
  - SHAFT LINER MATERIAL - TO BE CONFIRMED.
  - BEARING IS DESIGN FOR A NOMINAL BEARING LOAD (PRESSURE) OF 3-4 BAR AND L/D=3.0. MAXIMUM ALLOWED WORKING PRESSURE IS 6 BAR.
  - WEIGHTS SHOWN ARE APPROXIMATE AND NOT CONTRACTUALLY BINDING.
  - \* DIMENSIONS ARE DEPENDING ON THE HOUSING BORE SIZE. CUSTOMER TO CONFIRM SIZES PRIOR TO FINAL MACHINING AND/OR FITTING.
  - THE SEMI-FINISHED BEARINGS ARE CURRENTLY SUPPLIED WITHOUT A KEY SLOT MACHINED PENDING THE INSPECTION OF THE EXISTING HOUSING.IF THE EXISTING ANTI-ROTATION KEY IS NOT INSTALLED OR NEEDS TO BE REPLACED, ASSEMBLY 3 SHOULD BE ORDER FOR RETROFIT. IF THE EXISTING KEY HAS BEEN REMOVED AN ALTERNATIVE POSITION FOR DRILLING AND TAPING THE NEW KEY MAY NEED TO BE MADE DURING DOCKING AND THE ASSEMBLY DRAWING UPDATED TO REFLECT THE CHANGES.



ISOMETRIC VIEW

CLASSIFICATION: LR	1ST ANGLE: 	ACCESS CODE: 12	OWNER: CCG	YARD: -	CUSTOMER: WCA
MIN/MAX HOUSING Ø (mm): 939.80 H8 *	 Wärtsilä UK Ltd., 4, Marples Way, Havant, Hampshire, PO9 1NX, UK <small>The information contained in this document is the property of Wärtsilä UK Ltd and must not be disclosed without written consent. Title to information is neither sold or transferred and document is subject to return upon demand. Values in this document are not binding. Right of alteration reserved. © 2016 Registered Number: 1004816 Registered Office: Wäritsilä UK Ltd., Havant, Hampshire, UK</small>		VESSEL NAME: CCGS TERRY FOX	USED ON: ICE BREAKER	REF/FUNC. LOC.: 100015596
MIN/MAX SHAFT Ø (mm): 838.20 h7			DRAWN BY: C. BULGARU	CHECKED BY: D. CUNNINGTON	MAX. MASS: 609.4 kg
MIN. INTERFERENCE (mm): 0.75*			DRAWN DATE: 8 JUN 2016	DATE REVISED: 29 JUN 2018	SHEET: 1 OF 1
MIN/MAX CLEARANCE (mm): 2.01 - 2.44*			SEAL CODE/BASED ON: -		
POSSIBLE SWELL (mm): 0.21*			TITLE: AFT STERN TUBE BEARING ASSEMBLY Ø838.2 SHAFT WCS01-N-M		
PROJECT NUMBER: -	SIZE: A1		DRAWING NUMBER: H31429-01		REV: C
SHAFT SPEED, RPM MIN NOM MAX - 130 -					