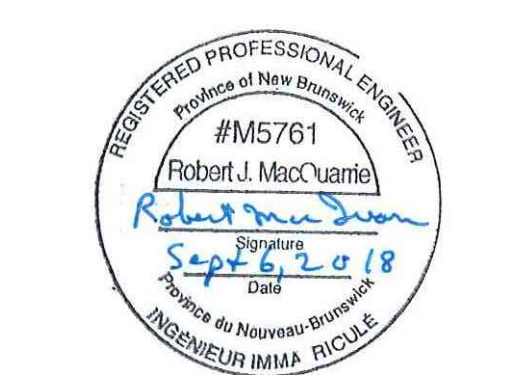


KEY PLAN
 --- LIMITS OF CONTRACT (AREA OF WORK)

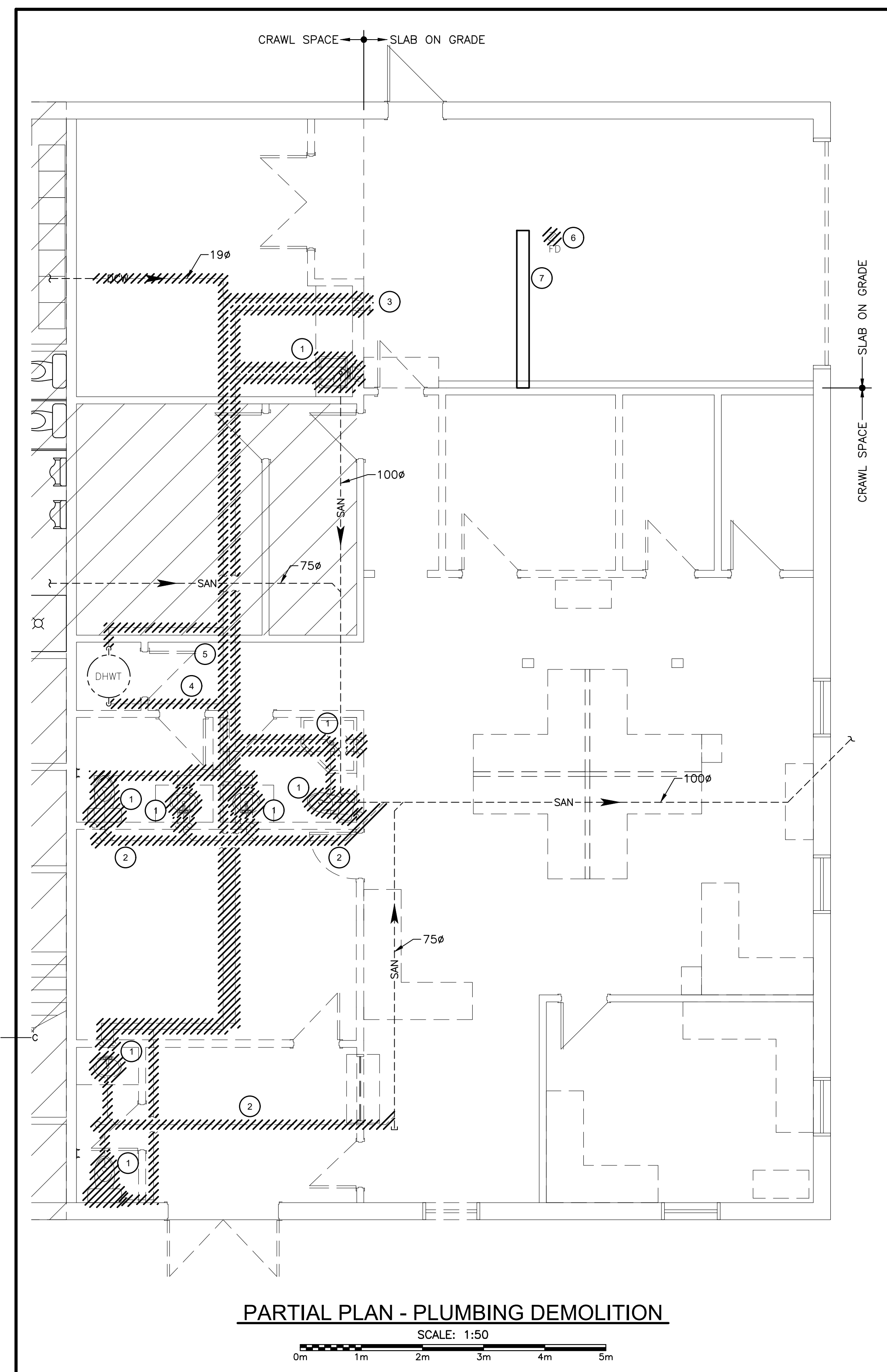


0	RELEASED FOR CONSTRUCTION	18 SEP 2018
revisions		date
project		project

G.O.C.B.
 SUNNY CORNER
 NEW BRUNSWICK

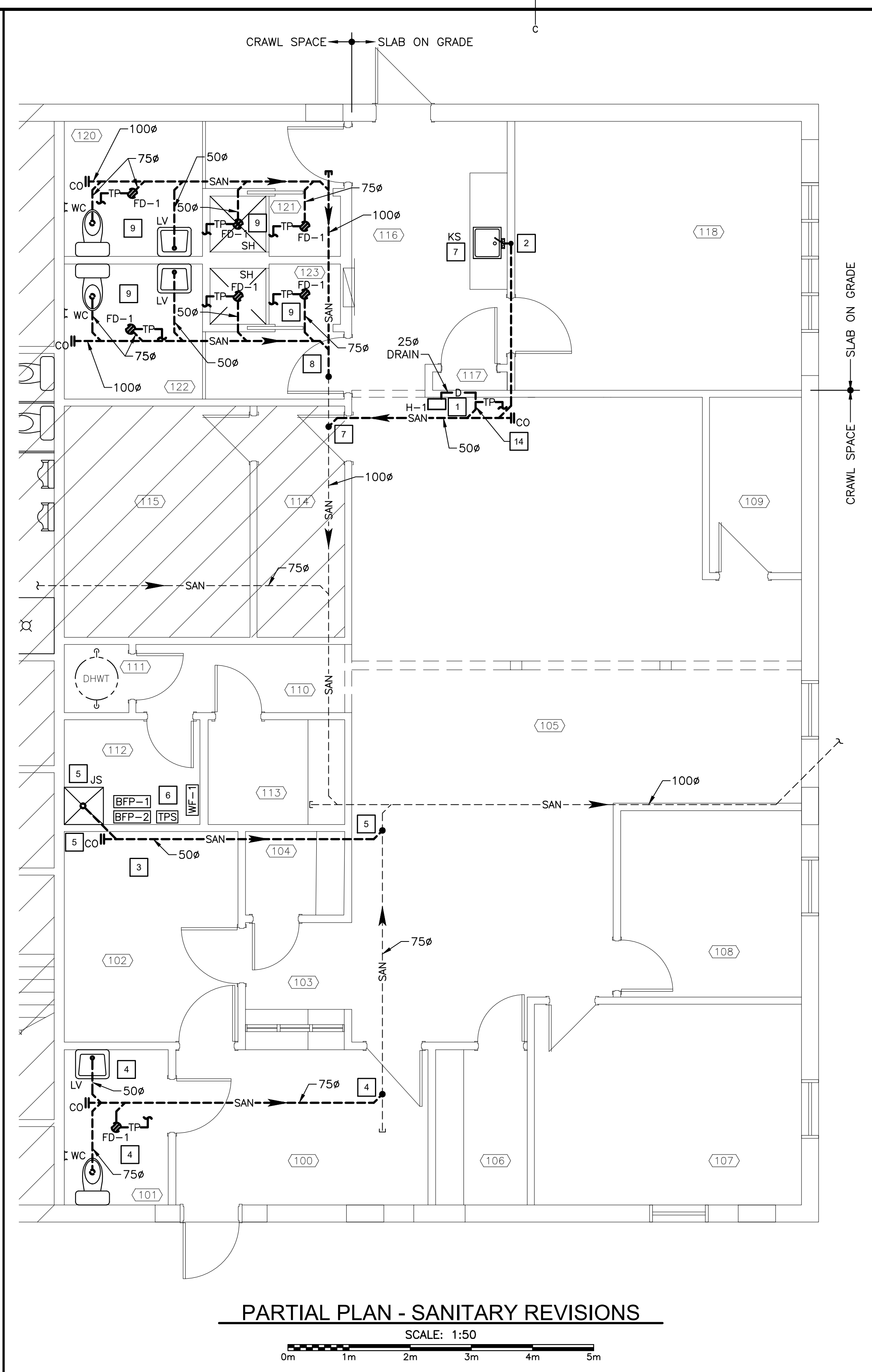
PLUMBING DEMOLITION,
 NEW CONSTRUCTION
 PARTIAL FLOOR PLANS

designed	RJM	conçu
date	JULY 20, 2018	
drawn	SET	dessiné
date	JULY 20, 2018	
approved		approuvé
date		
Tender	Soumission	
PWSC Project Manager	Administrateur de projets TPSGC	
project number	no. du projet	
	1005880	
drawing no.	no. du dessin	
	2200-1	



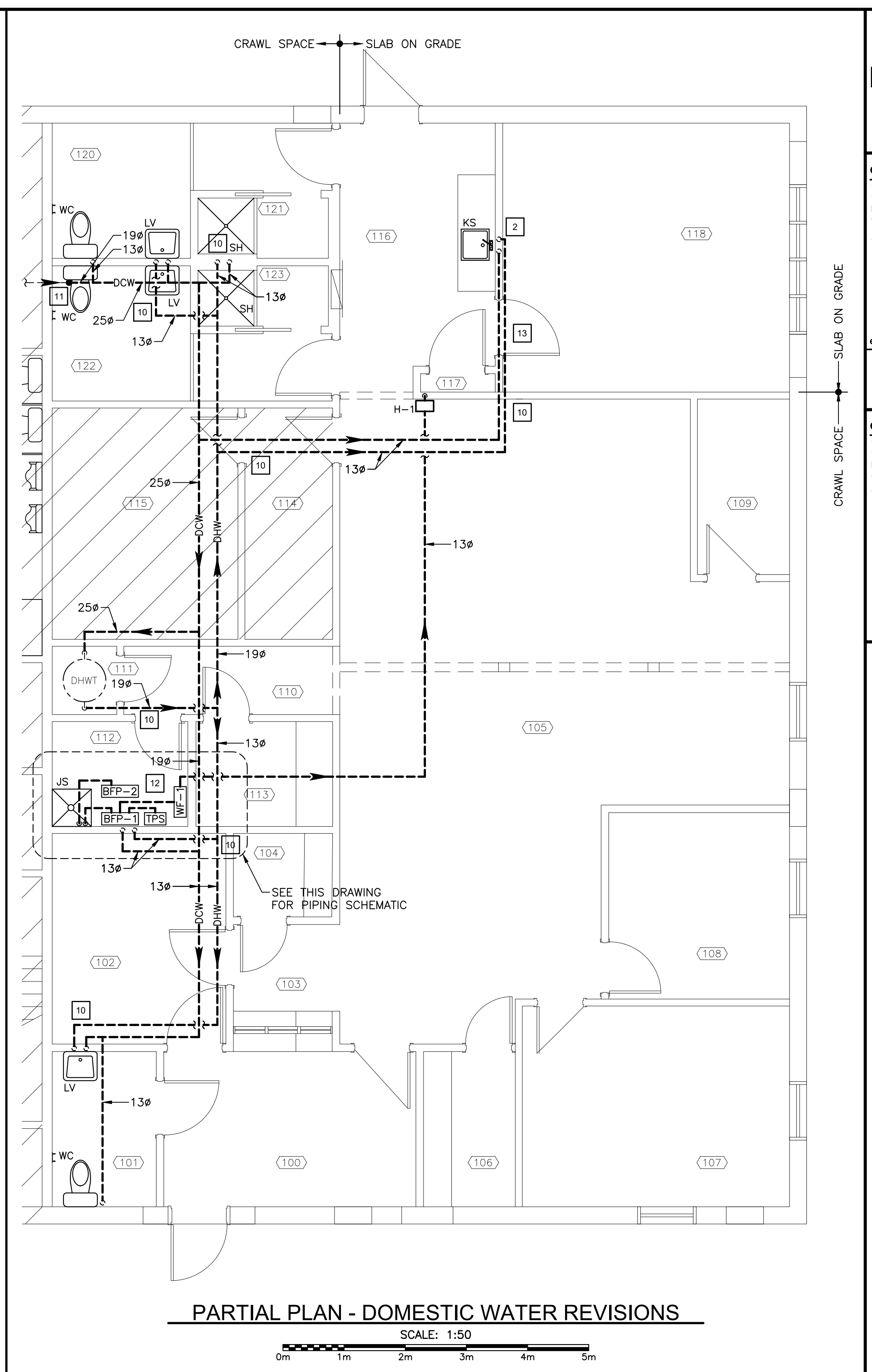
PARTIAL PLAN - PLUMBING DEMOLITION

SCALE: 1:50
 0m 1m 2m 3m 4m 5m



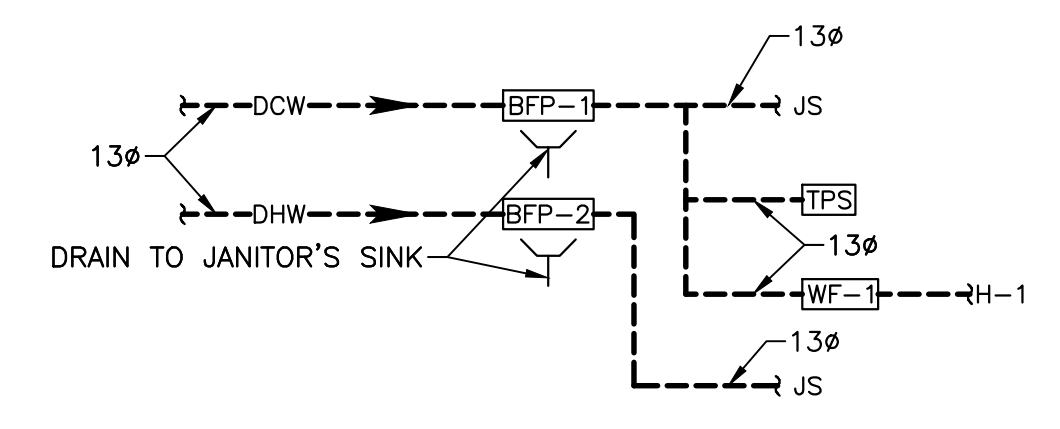
PARTIAL PLAN - SANITARY REVISIONS

SCALE: 1:50
 0m 1m 2m 3m 4m 5m



PARTIAL PLAN - DOMESTIC WATER REVISIONS

SCALE: 1:50
 0m 1m 2m 3m 4m 5m



PIPING SCHEMATIC
 SCALE: N.T.S.

PLUMBING DEMOLITION KEYNOTES

- REMOVE FIXTURE AND ALL ASSOCIATED DCW, DHW AND SANITARY PIPING.
- REMOVE UNDER FLOOR SANITARY PIPING.
- REMOVE DCW AND DHW FAUCETS AND ASSOCIATED PIPING.
- REMOVE ALL DHW PIPING UP TO HOT WATER HEATER.
- REMOVE ALL DCW PIPING BRANCHES FROM MAIN DCW PIPING TO HOT WATER HEATER TO REMAIN.
- INSTALL COVER ON EXISTING FLOOR DRAIN.
- SAW CUT AND REINSTATE FLOOR TO ALLOW NEW DCW, DHW AND SAN TO KS.

GENERAL NOTE

- VENT ALL PLUMBING TO NATIONAL PLUMBING CODE, LATEST EDITION. CONNECT TO EXISTING ROOF VENT AS REQUIRED.

PLUMBING KEYNOTES

- CONNECT HUMIDIFIER DRAIN TO SINK DRAIN.
- ROUTE SINK SUPPLY AND DRAIN PIPING THROUGH FLOOR SLAB SAW CUT TO CRAWL SPACE BELOW.
- APPROXIMATELY 6x6 METER ORANGE TARP IS REQUIRED IN THIS AREA OF THE CRAWL SPACE TO REPLACE WET EXISTING RADON REMEDIATION TARP. TARP IS WET FROM LEAKING SANITARY PIPES. REMOVE EXISTING WET TARP AND INSTALL A NEW ONE. SEAL ALL JOINTS WITH TUCK TAPE.
- INSTALL NEW WC, LV AND FD-1. DRAIN ALL FIXTURES WITH NEW SANITARY LINE AND CONNECT TO EXISTING AS SHOWN.
- INSTALL NEW JS. DRAIN JS WITH NEW SANITARY LINE AND CONNECT TO EXISTING AS SHOWN.
- INSTALL NEW BFP-1, BFP-2, TPS AND WF-1.
- INSTALL NEW KS. DRAIN KS WITH NEW SANITARY LINE AND CONNECT TO EXISTING AS SHOWN.
- CONNECT NEW SECTION OF SANITARY LINE AND EXTEND TO COLLECT NEW FIXTURES AS SHOWN.
- INSTALL NEW WC, LV, FD-1 AND SH. DRAIN ALL FIXTURES WITH NEW SANITARY LINE AND CONNECT TO NEW EXTENDED SANITARY LINE AS SHOWN.
- INSTALL NEW DHW LINE AT DHWT. ROUTE NEW DHW LINE TO SERVE NEW FIXTURES AS SHOWN.
- CONNECT NEW DCW TO EXISTING MAIN AND ROUTE PIPING TO SERVE NEW FIXTURES AS SHOWN.
- ROUTE 130 TRAP PRIMER PIPE IN CRAWL SPACE TO FLOOR DRAINS (FD-1) AND TRAP SERVING H-1.
- INSTALL CONTINUOUS PEX DCW AND DHW PIPING IN SLAB. RUN IN 50mm PVC ELECTRICAL CONDUIT.
- AIR GAP FITTING AND TRAP IN CRAWL SPACE.

PLUMBING LEGEND

---	EXISTING EQUIPMENT, DUCTWORK OR WIRING
---	EXISTING UNDER FLOOR PIPING
---	EXISTING TO BE REMOVED
---	EXISTING TO BE RELOCATED
---	NEW EQUIPMENT, DUCTWORK OR WIRING
---	NEW UNDER FLOOR PIPING
---	DOMESTIC COLD WATER PIPING
---	DOMESTIC HOT WATER PIPING
---	SANITARY PIPING
---	TRAP PRIMER PIPING
---	PIPE/DUCTWORK UP
---	PIPE/DUCTWORK DOWN
---	FLOOR DRAIN, EXISTING
---	FLOOR DRAIN, TYPE 1
---	DOMESTIC HOT WATER TANK
---	WATER CLOSET
---	LAVATORY
---	JANITOR SINK
---	BACKFLOW PREVENTER #1
---	WATER FILTER #1
---	TRAP PRIMER STATION
---	KITCHEN SINK
---	SHOWER
---	CLEANOUT
---	HUMIDIFIER #1
---	DRAIN PIPING

