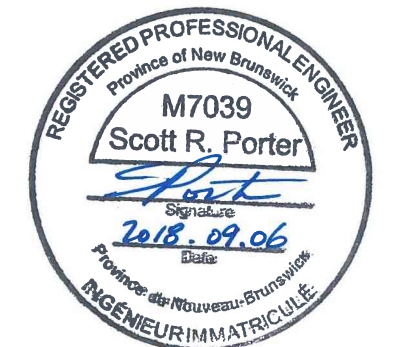


KEY PLAN
LIMITS OF CONTRACT (AREA OF WORK)



0	ISSUED FOR CONSTRUCTION	06 SEP 2018
revisions		date
project		project

G.O.C.B.
SUNNY CORNER
NEW BRUNSWICK

drawing design

ELECTRICAL PLANS,
LEGENDS, AND
PANEL SCHEDULE

designed MG	conçu
date SEPTEMBER 06, 2018	
drawn MG	dessiné
date SEPTEMBER 06, 2018	
approved SRP	approuvé
date	
Tender	Soumission
PWOSC Project Manager	Administrateur de projets TPSGC
project number 1005880	no. du projet
drawing no. 2600-1	no. du dessin

ELECTRICAL LEGEND

- 120V DUPLEX RECEPTACLE WIRED TO EXISTING ROOM 120V RECEPTACLE CIRCUIT.
- THERMOSTAT, LINE VOLTAGE, OUELLET #OTL101C
- JUNCTION BOX
- RECESSED OUTLET BOX FOR TELEPHONE/DATA OUTLET C/W EMPTY 27mm CONDUIT RUN TO ACCESSIBLE CEILING SPACE C/W PULLCORD
- FIRE ALARM MANUAL PULL STATION
- FIRE ALARM SMOKE DETECTOR
- EXISTING FIRE ALARM BELL
- 120V LIGHT SWITCH
- 3-GANG - 120V LIGHT SWITCHES
- 120V WALL SWITCH VACANCY SENSOR
- EXISTING PANELBOARD
- MANUAL MOTOR STARTER
- EXISTING SURFACE MOUNTED LUMINAIRE
- EXISTING SURFACE MOUNTED LUMINAIRE
- EXISTING CEILING MOUNTED LUMINAIRE
- EXISTING WALL MOUNTED LUMINAIRE
- NEW 1220mm SURFACE MOUNTED LED WRAPAROUND LUMINAIRE
- NEW 610mm WALL MOUNTED LED LUMINAIRE
- NEW 100mm DIA LED RECESSED DOWNLIGHT
- NEW 150mm DIA LED RECESSED SHOWER DOWNLIGHT
- WALL MOUNTED LED EXIT LIGHT
- WALL EMERGENCY BATTERY UNIT
- WALL MOUNTED EMERGENCY LIGHT REMOTE HEAD
- CEILING MOUNTED DUAL TECH LOW VOLTAGE OCCUPANCY SENSOR
- CCTV CAMERA LOCATION. INSTALL DEVICE BOX IN WALL WITH 21mm CONDUIT C/W PULL CORD BACK TO JUNCTION BOX IN ROOM 113.
- MICROPHONE LOCATION. INSTALL DEVICE BOX 1200mm A.F.F. IN WALL WITH 21mm CONDUIT C/W PULL CORD BACK TO JUNCTION BOX IN ROOM 113
- DIRECT EQUIPMENT CONNECTION. SEE MECHANICAL
- ELECTRIC BASEBOARD HEATERS
- ELECTRIC FORCE FLOW HEATERS

ELECTRICAL SUBSCRIPTS

- 20 - INDICATES TYPE CSA 5-20R RECEPTACLES
- A - INDICATES MOUNTED 1220mm A.F.F. OR 150mm ABOVE COUNTER
- 3 - INDICATES 3-WAY SWITCH
- G - INDICATES GFCI RECEPTACLE
- R - INDICATES EXISTING TO BE RELOCATED

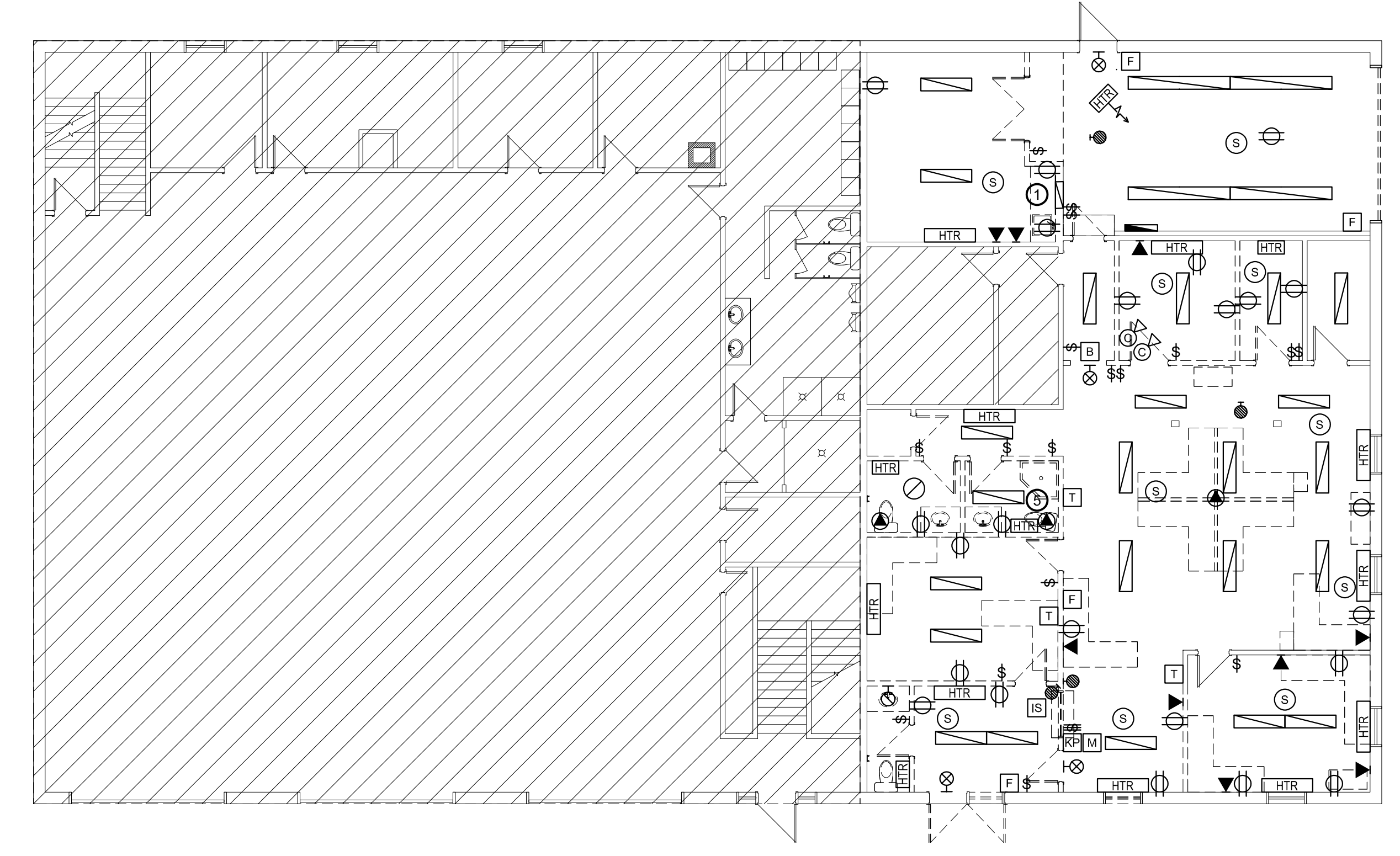
- LIGHT LINE WEIGHT INDICATES EXISTING TO REMAIN
- DARK LINE WEIGHT INDICATES NEW WORK

GENERAL NOTES

1. CONTRACTOR TO COORDINATE WORK WITH EXISTING AND NEW BASEBOARD HEATERS WITH CONTROLS CONTRACTOR. PROVIDE ADDITIONAL LINE AND LOW VOLTAGE CONNECTIONS AS REQUIRED AS WELL AS RELAYS AND TRANSFORMERS AS REQUIRED.

KEYNOTES

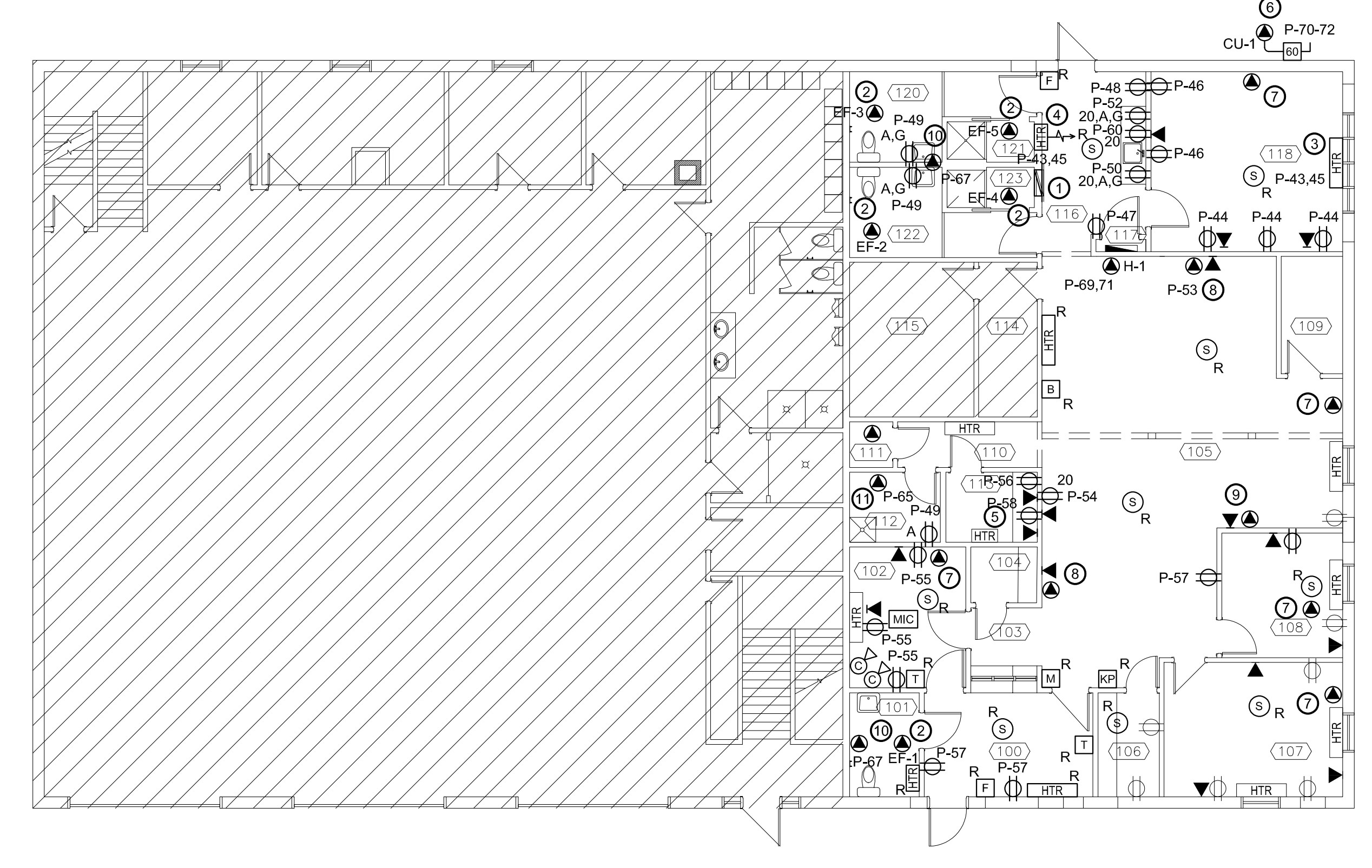
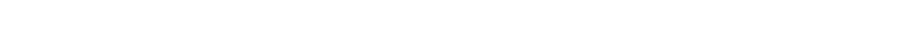
1. CONTRACTOR TO DISCONNECT AND REMOVE EXISTING 200A, 120/208V, 42 CCT PANELBOARD AND REPLACE WITH NEW 225A, 120/208V, 3PH, 4W, 72 CIRCUIT PANELBOARD C/W 200A/3P MAIN BREAKER. NEW PANEL TO BE INSTALLED IN SAME WALL CAVITY FACING THE CORRIDOR. CONTRACTOR TO POPULATE TOP 42 BREAKER SPACES WITH NEW BREAKERS TO MATCH EXISTING SIZING. SEE PANEL SCHEDULE FOR DETAILS. PANEL TO BE NAMED PANEL 'P'.
2. EXHAUST FAN TO BE WIRED TO 120V SWITCHED LIGHTING CIRCUIT.
3. SUPPLY AND INSTALL NEW 750W, 208V, 1PH BASEBOARD HEATER. HEATER TO BE OUELLET #RBH0758 OR EQUAL.
4. SUPPLY AND INSTALL NEW 1125W, 208V, 1PH RECESSED FORCE FLOW HEATER OUELLET #OACU01500-T OR EQUAL. HEATER TO BE COMPLETE WITH THERMOSTAT.
5. CONTRACTOR TO REMOVE BUILT-IN THERMOSTAT FROM EXISTING HEATER AND WIRE INTO MECHANICAL CONTROLS. COORDINATE WORK WITH MECHANICAL CONTROLS CONTRACTOR.
6. SUPPLY AND INSTALL 60A, 208V DISCONNECT SWITCH, SQUARE D OR EQUAL, ADJACENT TO UNIT. SWITCH TO BE WEATHER PROOF. WIRING TO CONDENSING UNIT TO BE 2#8, 1#10 BOND IN 27mm CONDUIT.
7. DIRECT EQUIPMENT CONNECTION TO EVAPORATOR UNIT. SUPPLY AND INSTALL ONE (1) FLUSH MOUNTED MANUAL MOTOR SWITCH SQUARE D OR EQUAL, ADJACENT TO UNIT. WIRE TO CIRCUIT P-66,68.
8. POWER AND COMMUNICATIONS CONNECTION TO EXISTING OFFICE WORKSTATIONS. COORDINATE REQUIREMENTS ON SITE.
9. POWER AND COMMUNICATIONS CONNECTION TO EXISTING OFFICE WORKSTATIONS. COORDINATE REQUIREMENTS ON SITE. WIRE WORKSTATIONS TO EXISTING WORKSTATION POWER CIRCUIT. EXTEND CIRCUIT AS REQUIRED.
10. 120V CONNECTIONS TO AUTO-SINKS. COORDINATE EXACT LOCATIONS WITH MECHANICAL CONTRACTOR.
11. DIRECT EQUIPMENT CONNECTION TO ELECTRONIC TRAP PRIMER.



NOTE: EXISTING CONDITION DRAWING IS FOR INFORMATION ONLY. DEVICES SHOWN ON EXISTING CONDITION DRAWING BUT NOT ON ELECTRICAL PLAN ARE TO BE REMOVED COMPLETE WITH WIRING AND CONDUIT BACK TO NEAREST JUNCTION BOX.

ELECTRICAL EXISTING CONDITIONS

SCALE : 1:100



POWER AND COMMUNICATIONS PLAN

SCALE : 1:100

