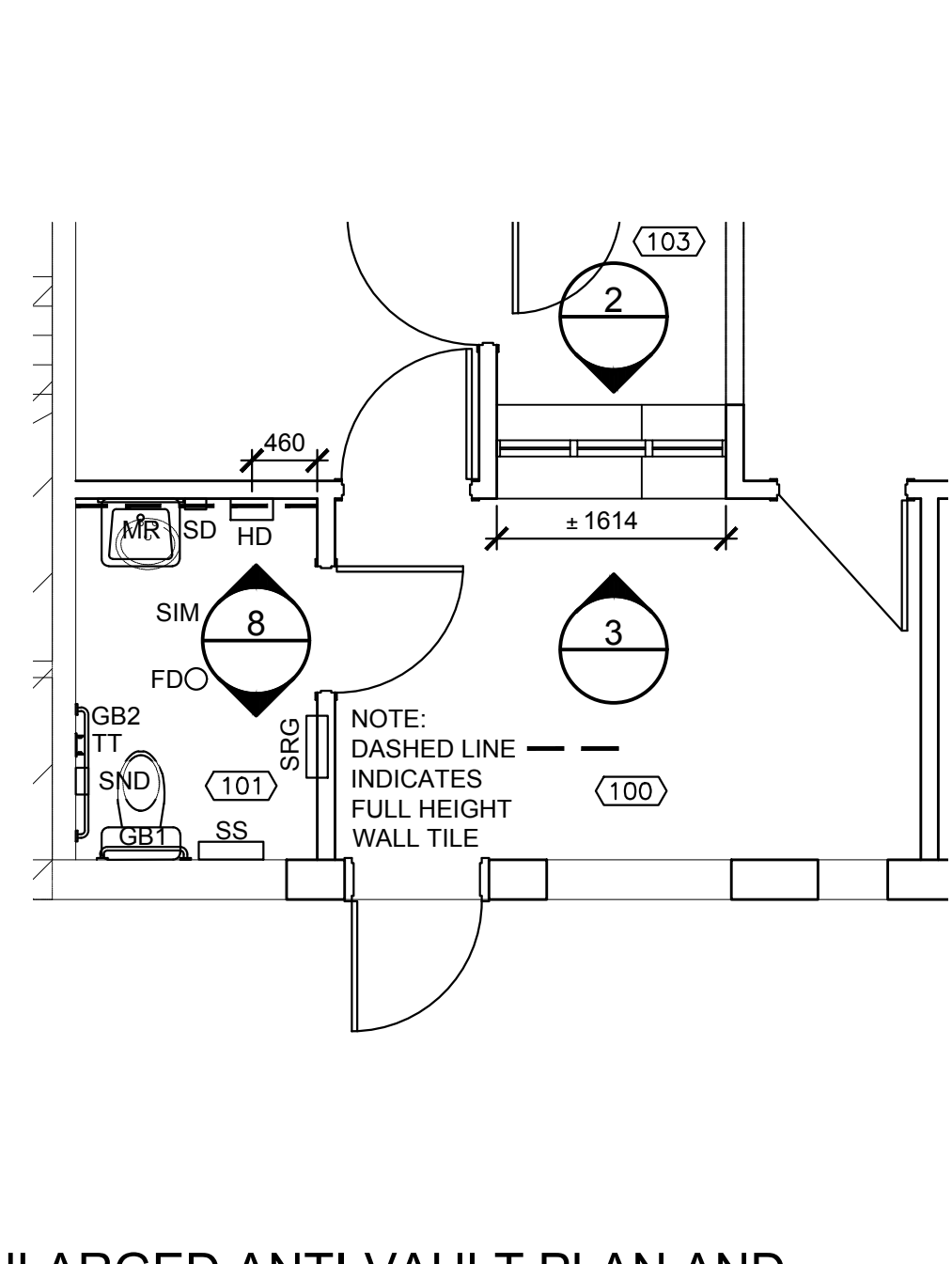


0	ISSUED FOR CONSTRUCTION	06 SEP 2018
revisions		date
project		project

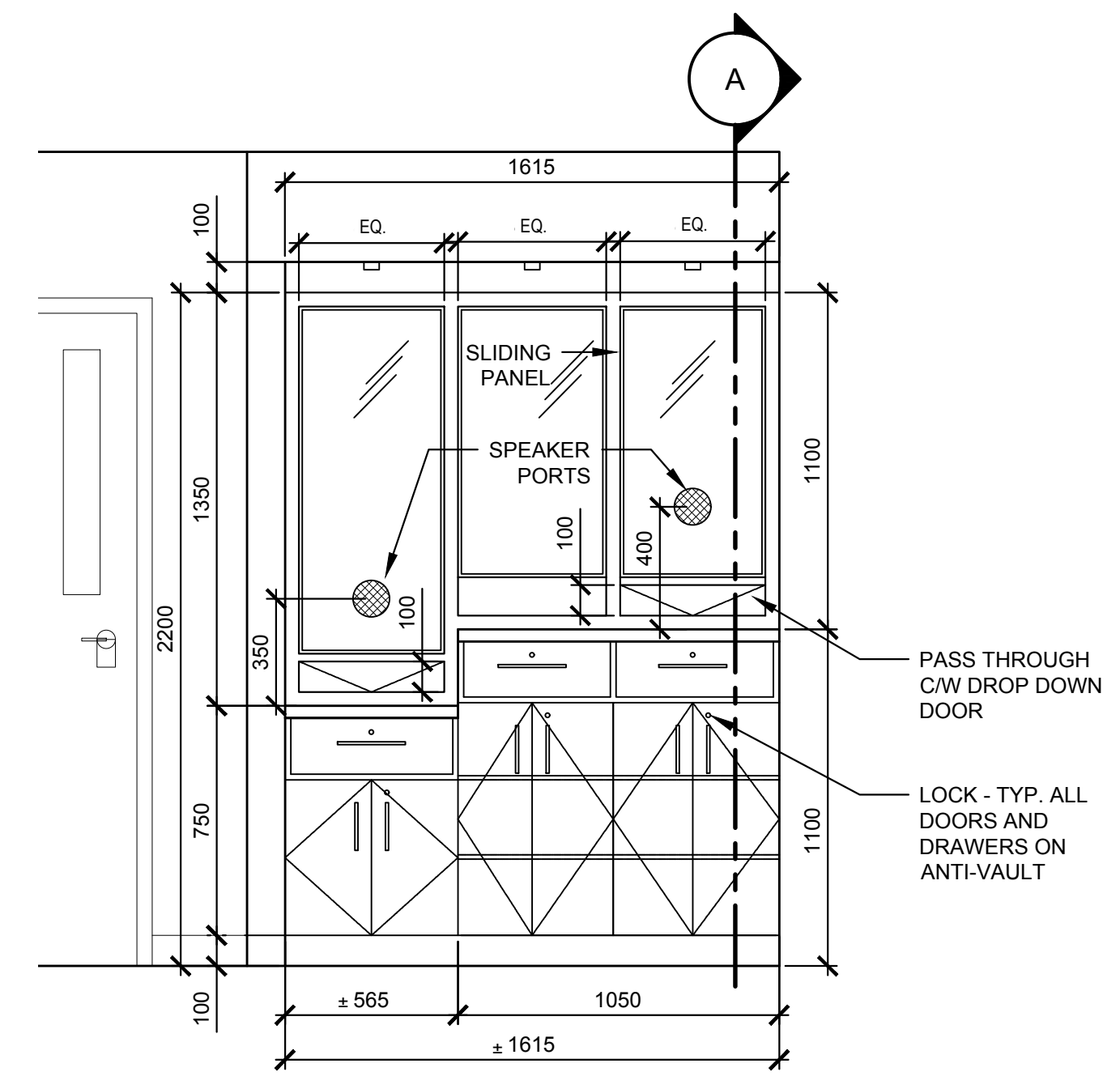
**G.O.C.B.
SUNNY CORNER
NEW BRUNSWICK**

**ENLARGED PLANS,
INTERIOR ELEVATIONS
CASEWORK DETAILS &
WASHROOM MOUNTING HEIGHTS**

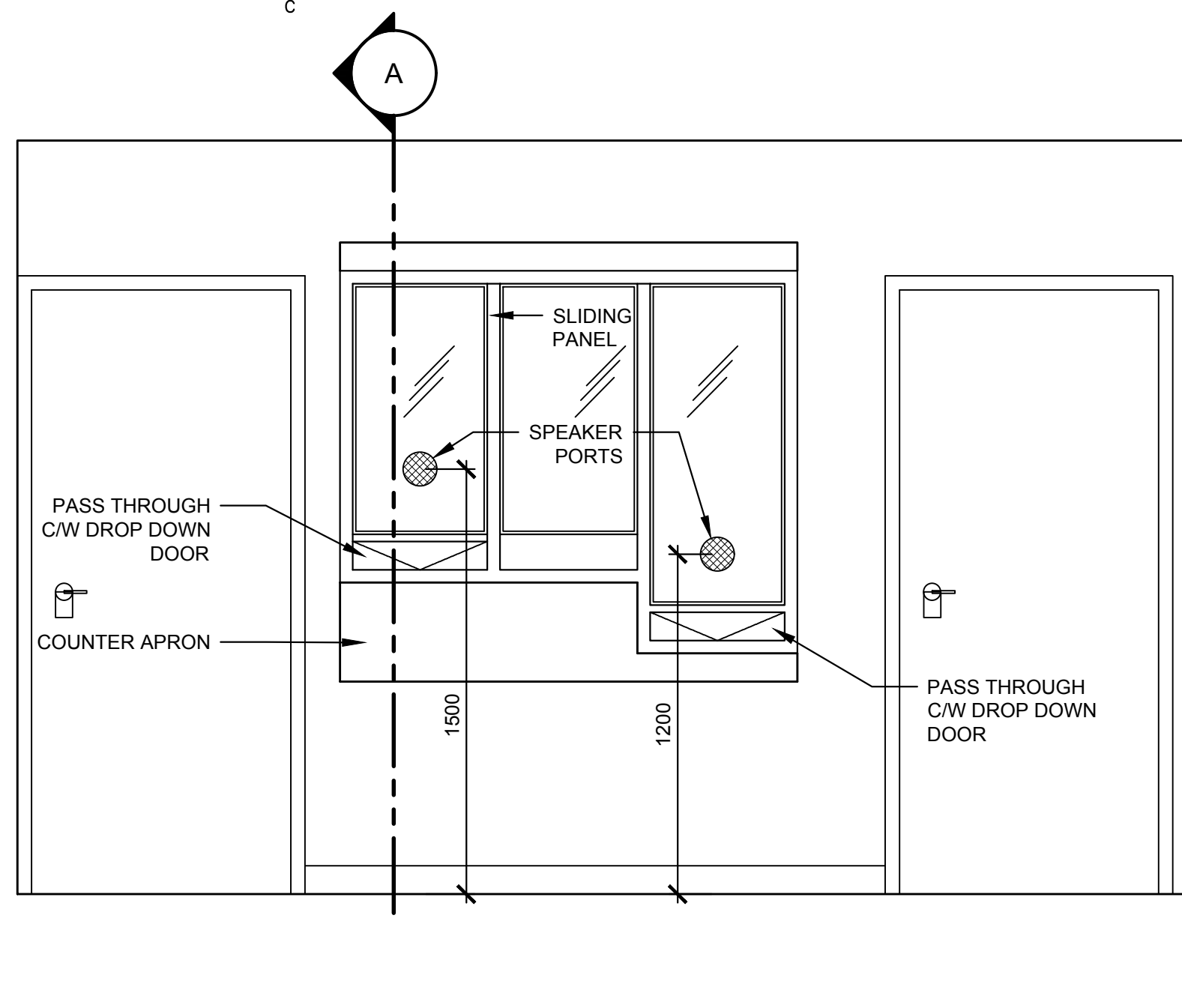
designed	AKT	concp
date	JULY 20, 2018	
drawn	AKT/DPE	dessin
date	JULY 20, 2018	
approved		approuv
date		
Tender		Submission
FWGSC Project Manager	Administrateur de projets TPWGC	
project number	1005880	no. du projet
drawing no.	600-2	no. du dessin



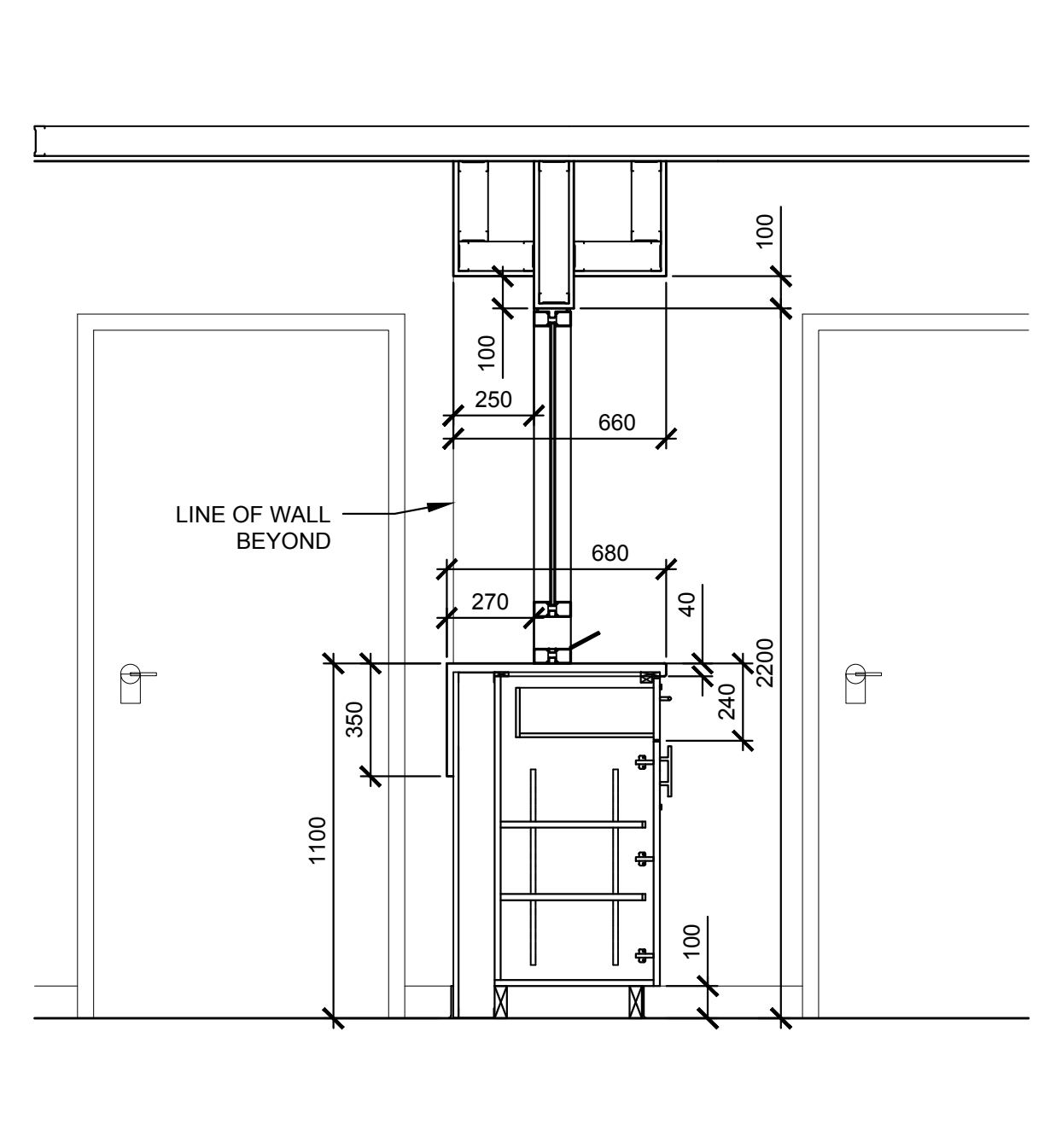
ENLARGED ANTI-VAULT PLAN AND WASHROOM PLAN
SCALE : 1:50



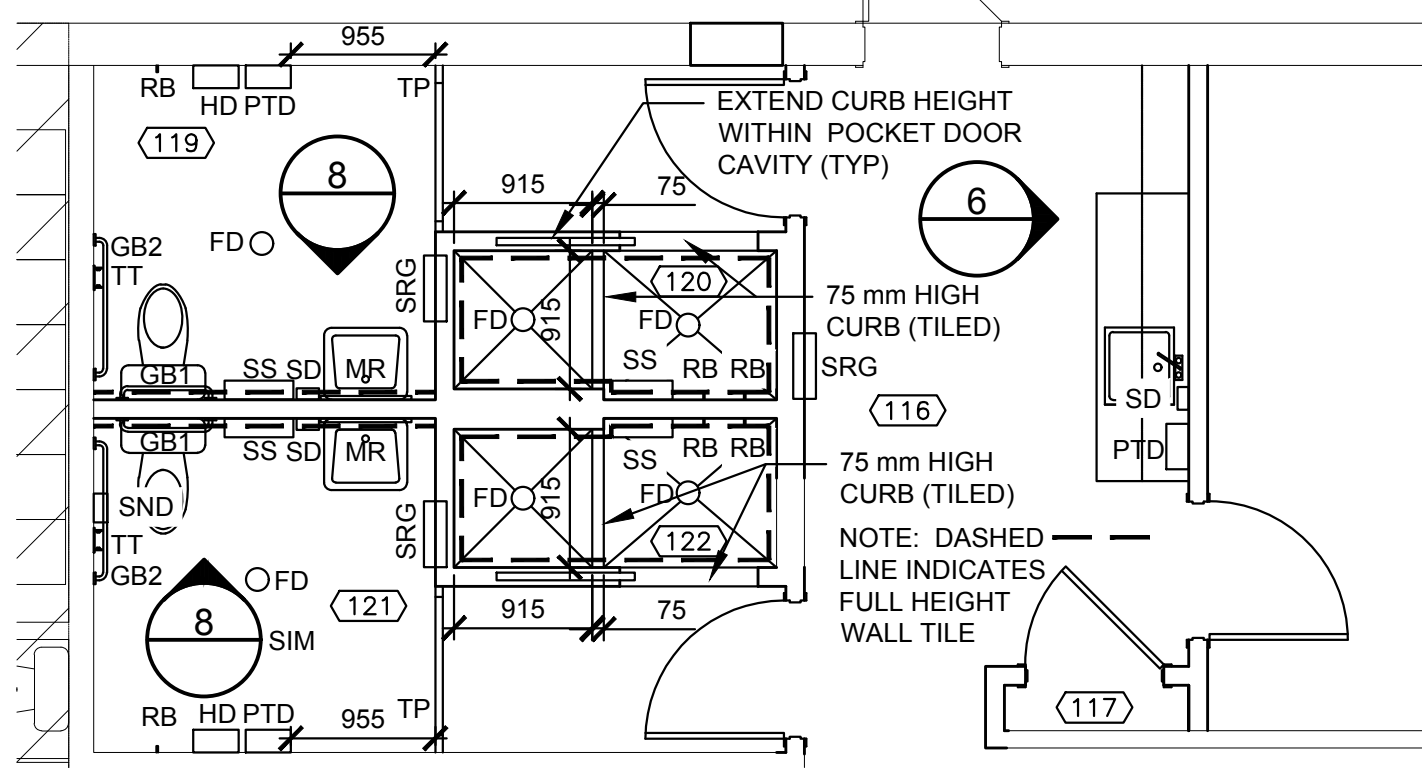
ANTI-VAULT ELEVATION (PRIVATE SIDE)
SCALE : 1:20



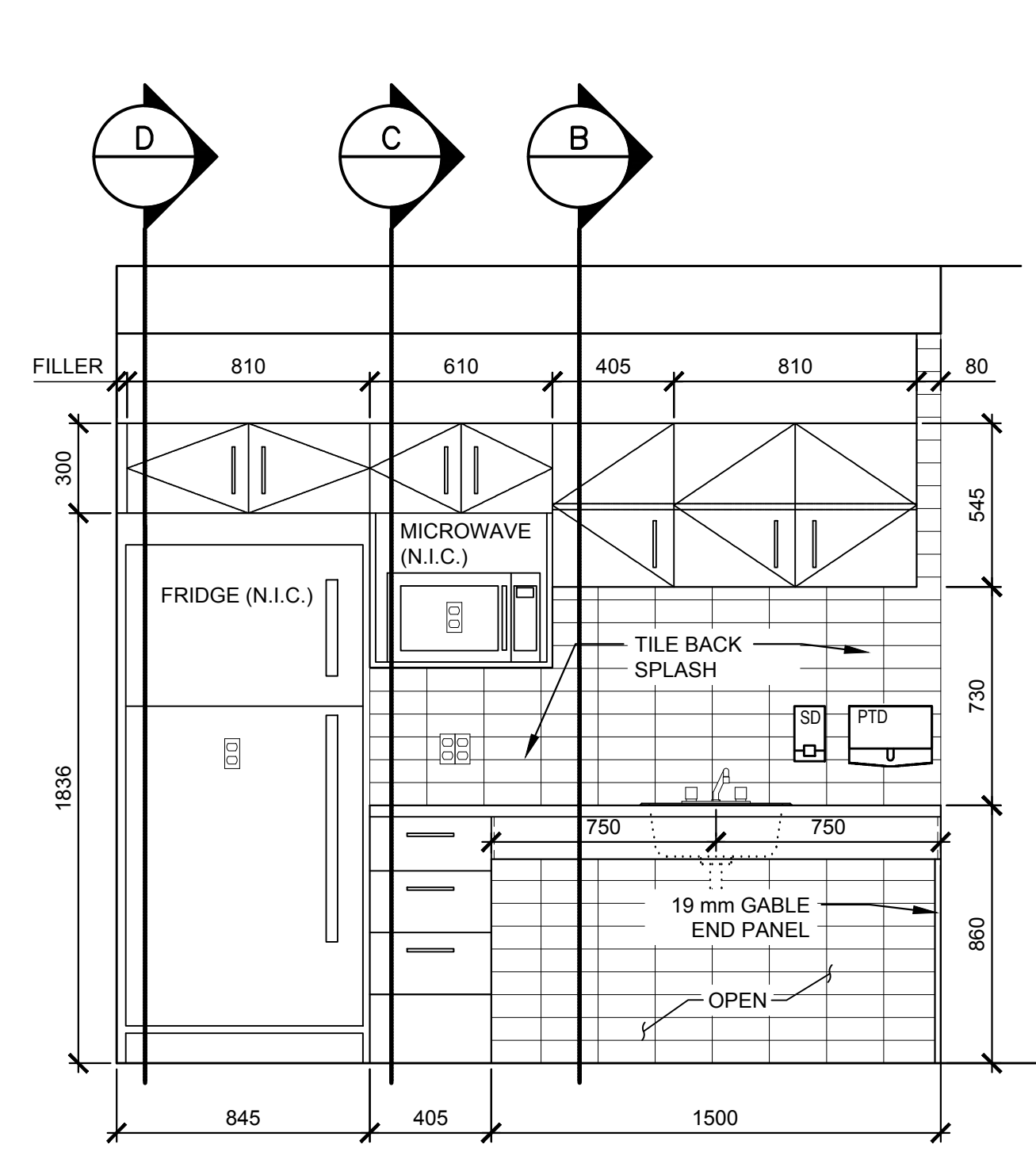
ANTI-VAULT ELEVATION (PUBLIC SIDE)
SCALE : 1:20



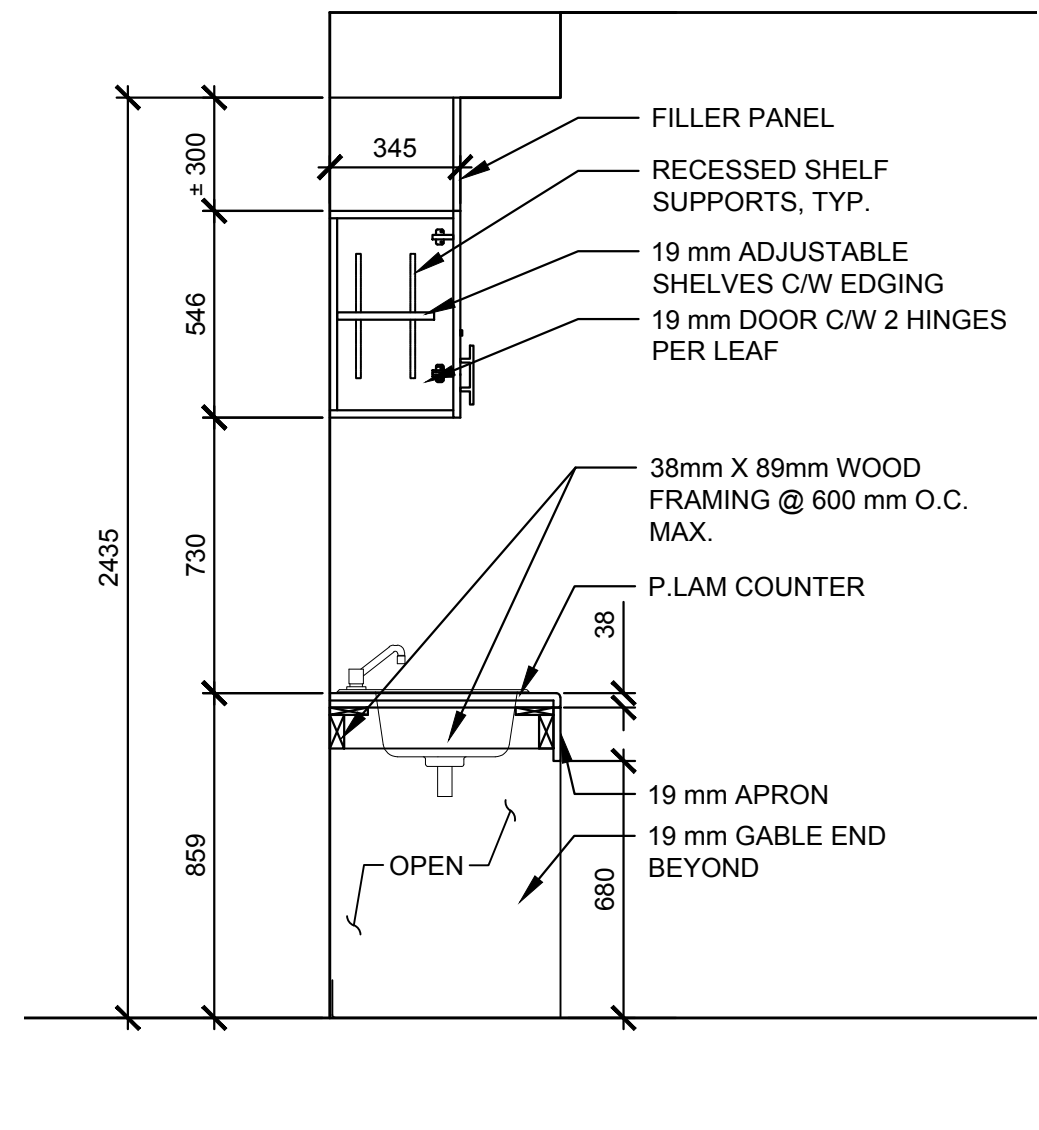
ANTI-VAULT SECTION DETAIL
SCALE : 1:20



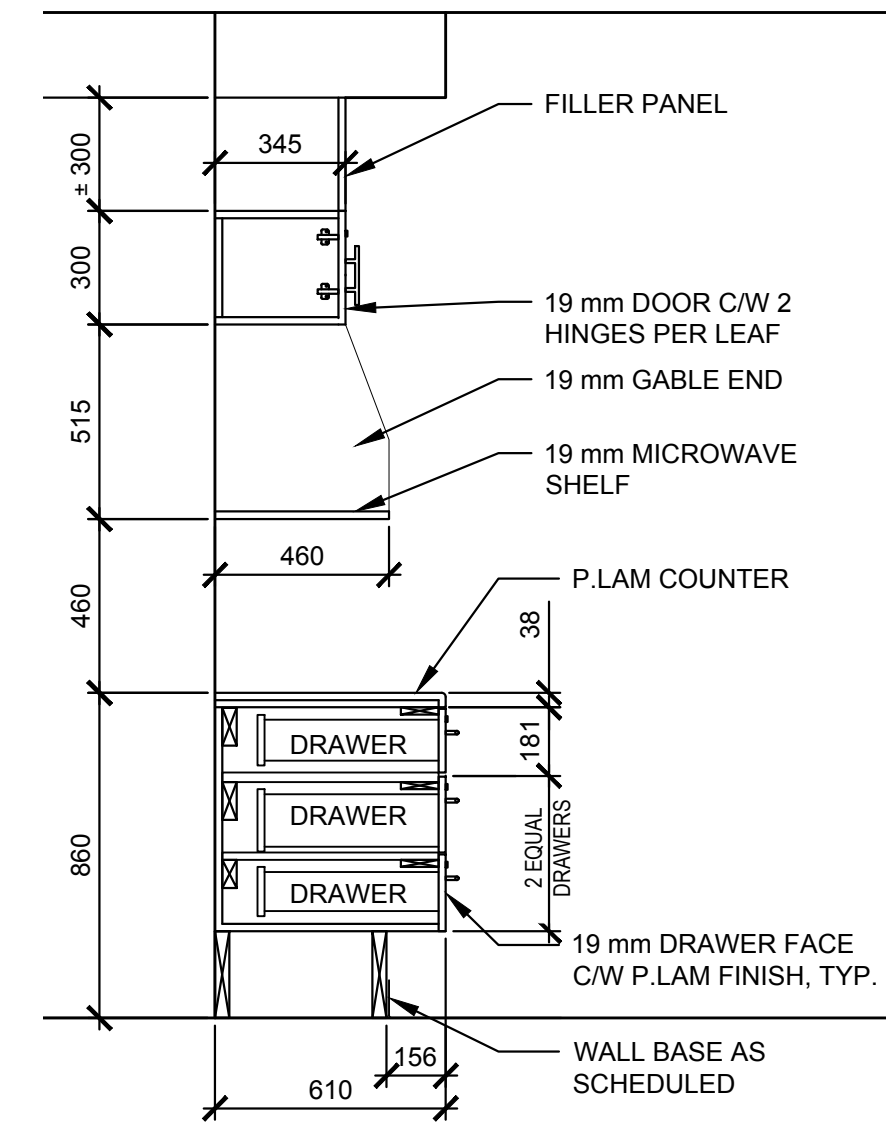
ENLARGED PLAN
SCALE : 1:50



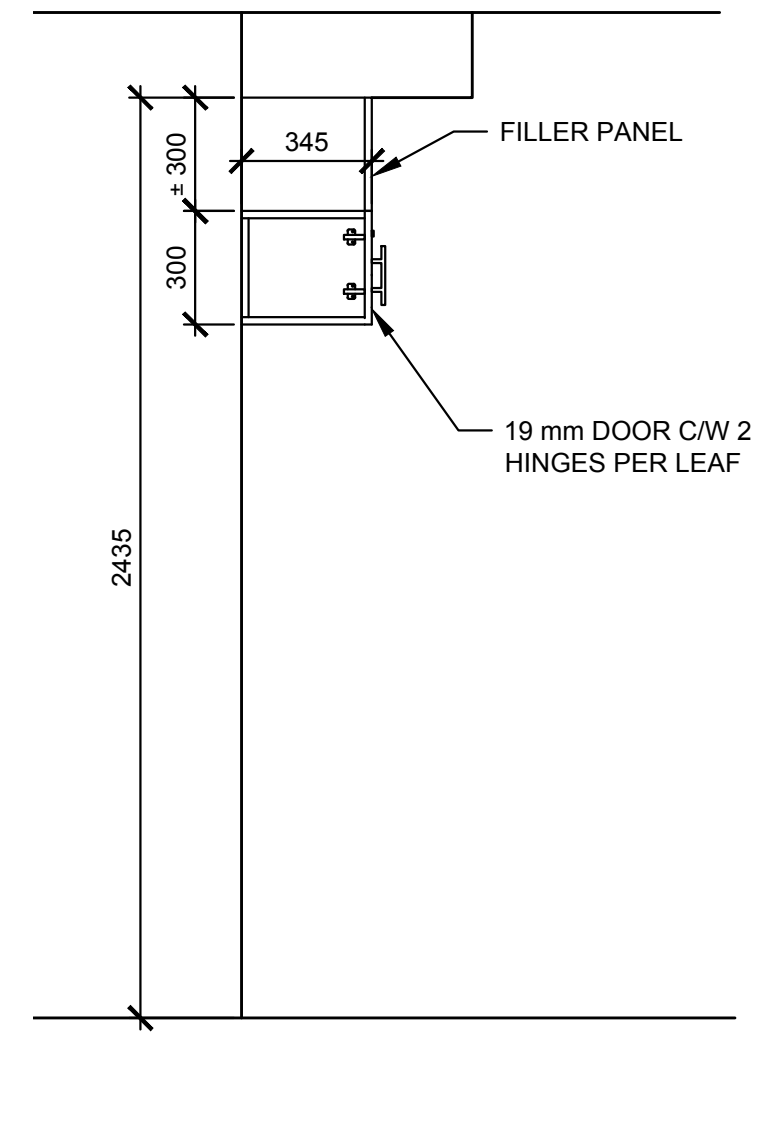
CASEWORK ELEVATION
SCALE : 1:20



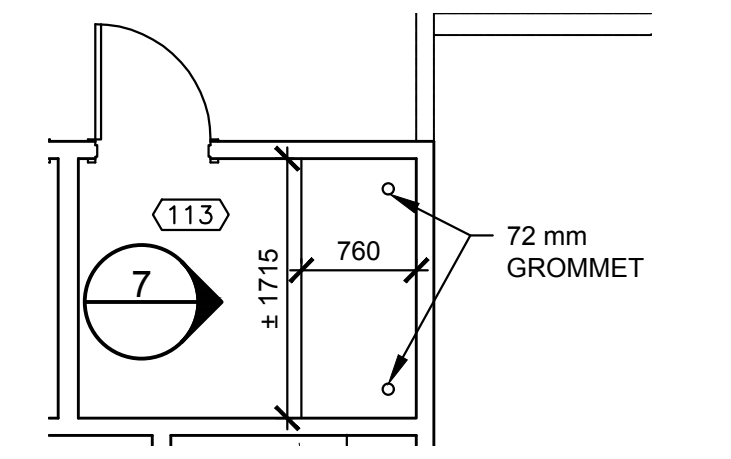
CASEWORK SECTION DETAIL
SCALE : 1:20



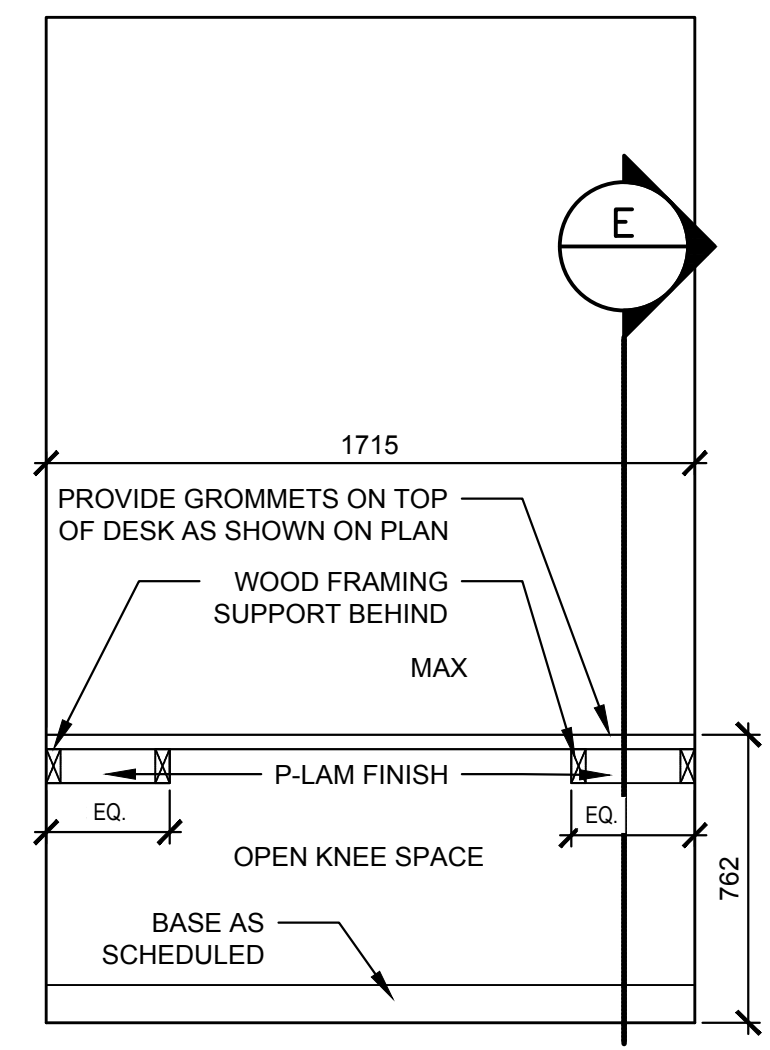
CASEWORK SECTION DETAIL
SCALE : 1:20



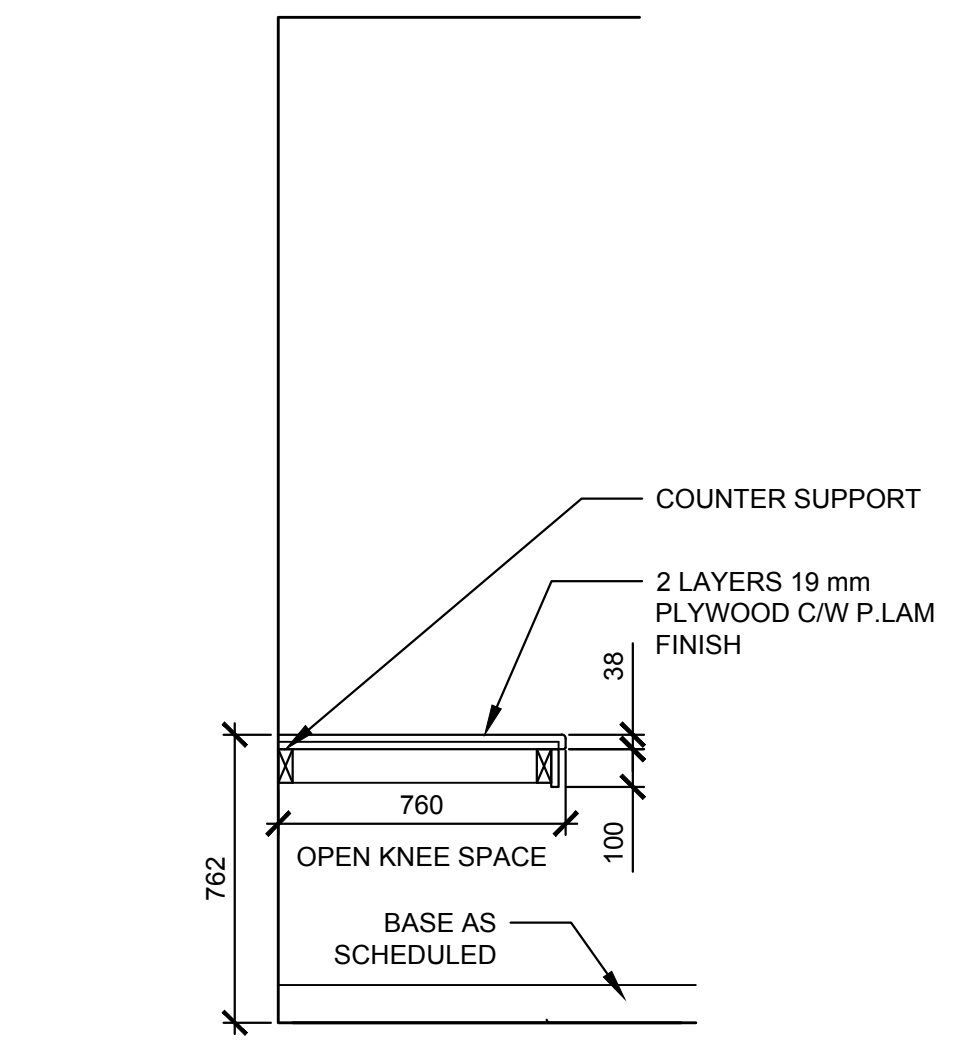
CASEWORK SECTION DETAIL
SCALE : 1:20



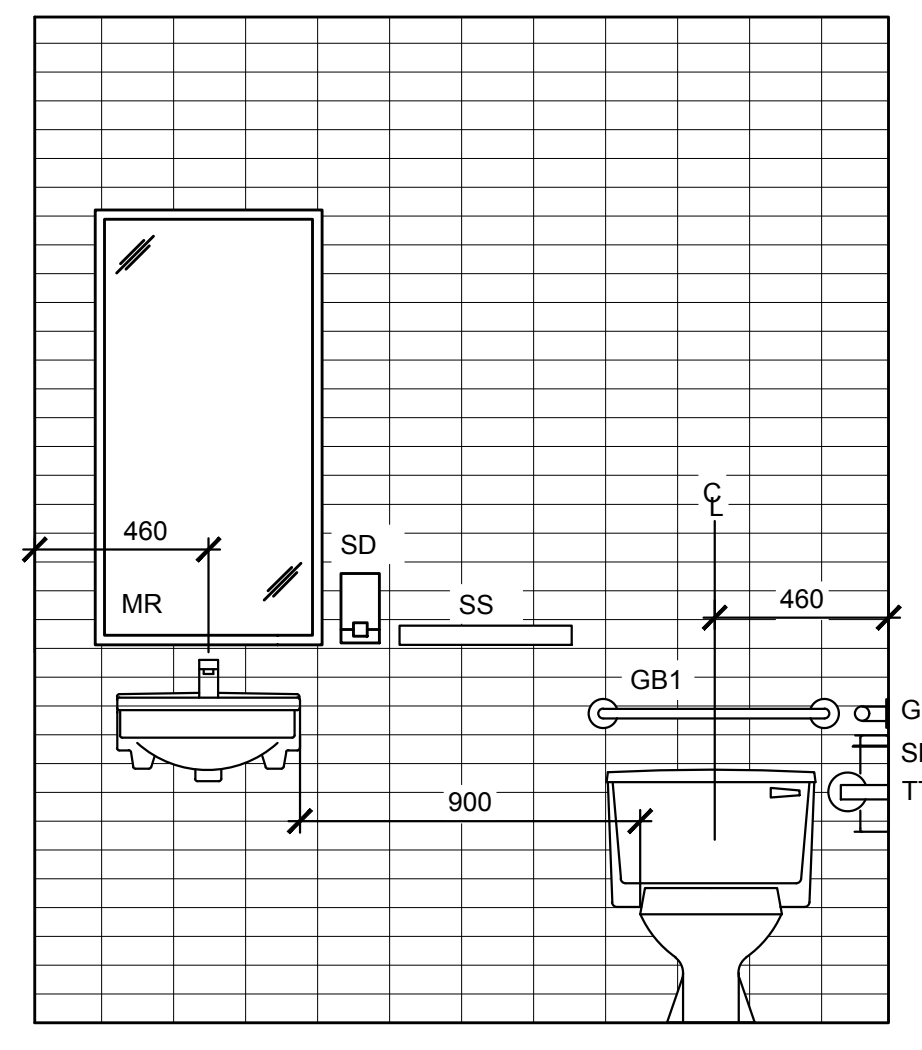
ENLARGED WORK COUNTER PLAN
SCALE : 1:50



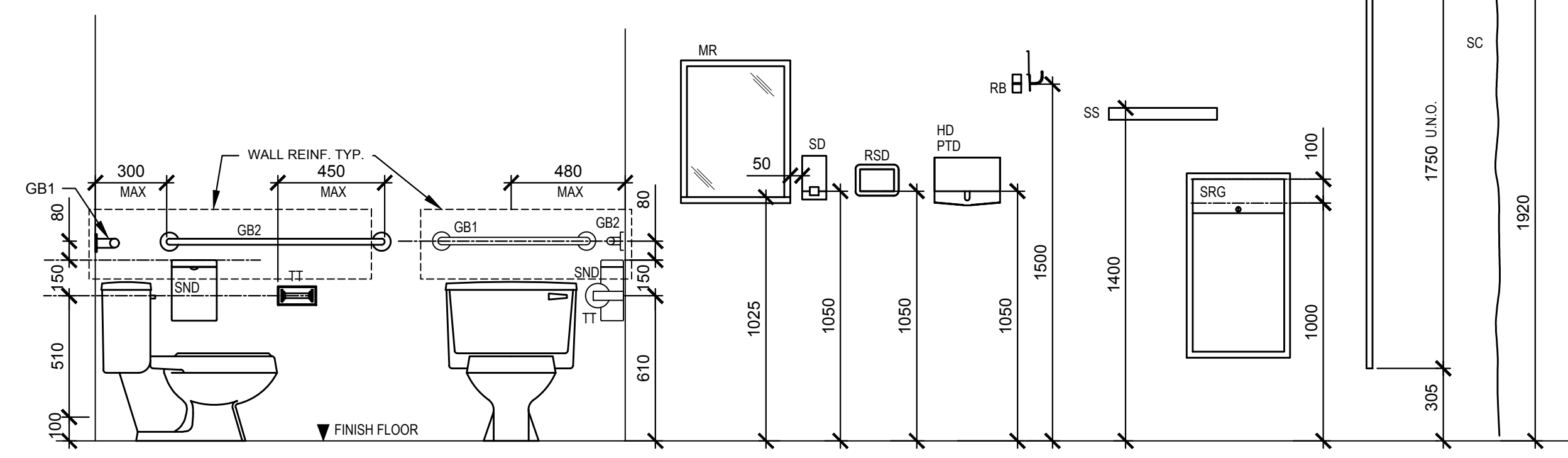
WORK COUNTER ELEVATION
SCALE : 1:20



WORK COUNTER SECTION DETAIL
SCALE : 1:20



WASHROOM ELEVATION (TYPICAL)
SCALE : 1:20



WASHROOM MOUNTING HEIGHTS
SCALE : 1:20

LEGEND

- GB1 GRAB BAR, HORIZONTAL MOUNTED, 610mm LONG, GB1 IN SHOWER MOUNTED AT 750mm AFF
- GB2 GRAB BAR, HORIZONTAL MOUNTED, 1067mm LONG
- HD HAND DRYER
- MR FRAMED MIRROR, 600 mm W x 1150 mm H
- PTD PAPER TOWEL DISPENSER
- RB ROBE HOOK - MOUNTED 1500 mm A.F.F. U.N.O.
- RSD RECESSED SOAP DISH
- SD SOAP DISPENSER
- SND SANITARY NAPKIN DISPOSAL
- SRG SEMI-RECESSED GARBAGE DISPOSAL
- SC SHOWER CURTAIN
- SR SHOWER ROD
- SS STAINLESS STEEL SHELF 610 mm W
- TP TOILET PARTITION
- TT TOILET TISSUE DISPENSER

NOTES

1. MIRRORS (MR) DIMENSIONS ARE FROM OUTSIDE OF FRAME TO OUTSIDE OF FRAME. INSTALL 2150 A.F.F. (MEASURED FROM TOP OF FRAME TO FLOOR)
2. SHOWER ROD AND CURTAIN TO BE PROVIDED AT EACH SHOWER STALL.