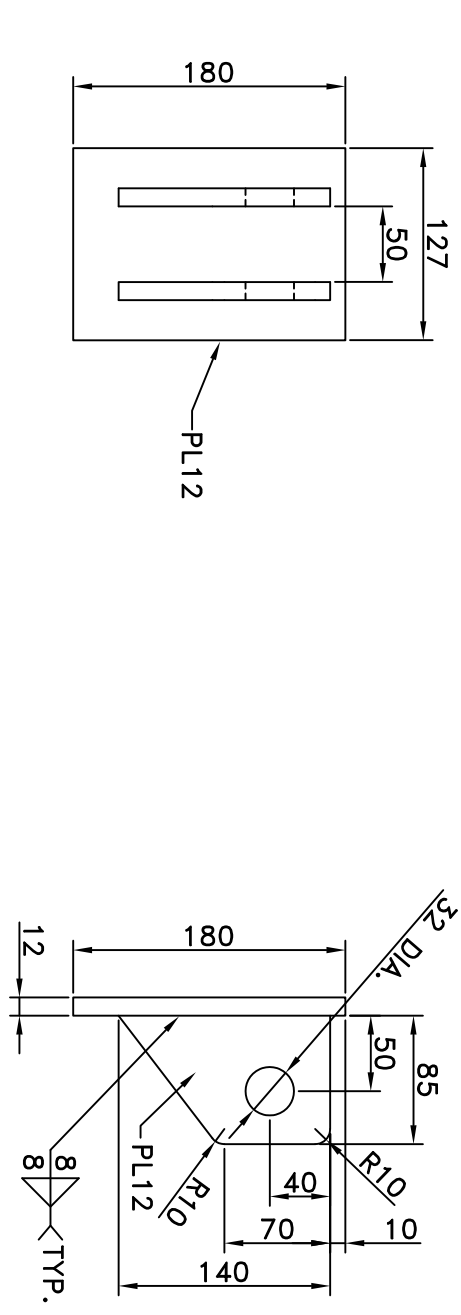
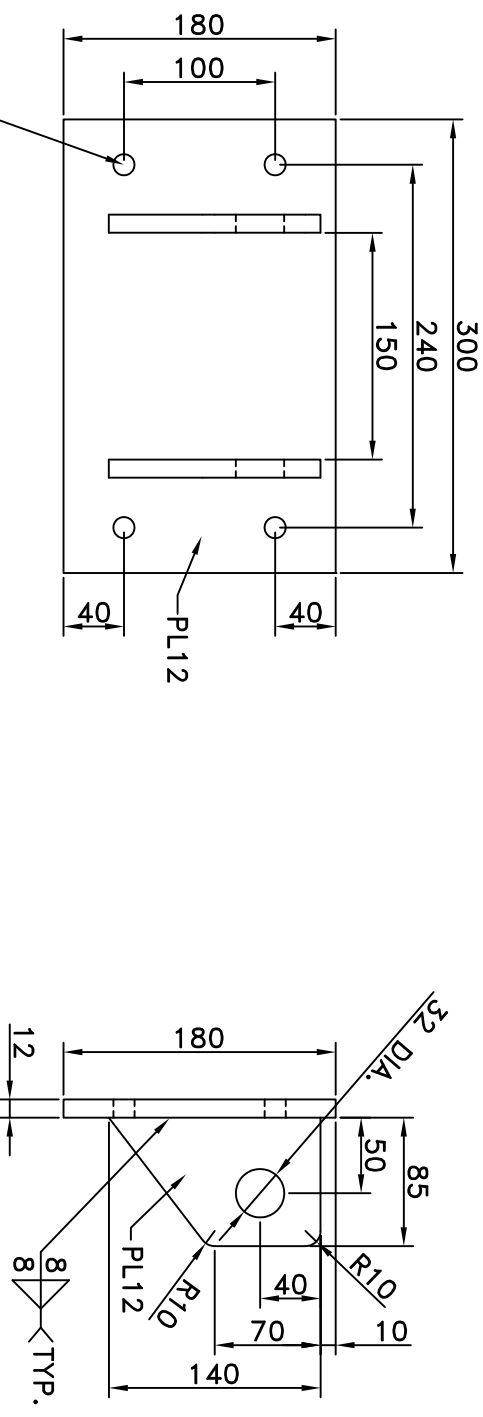


NOTES:

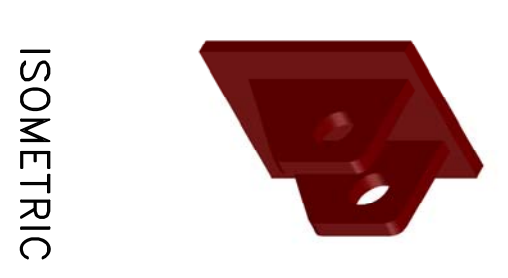
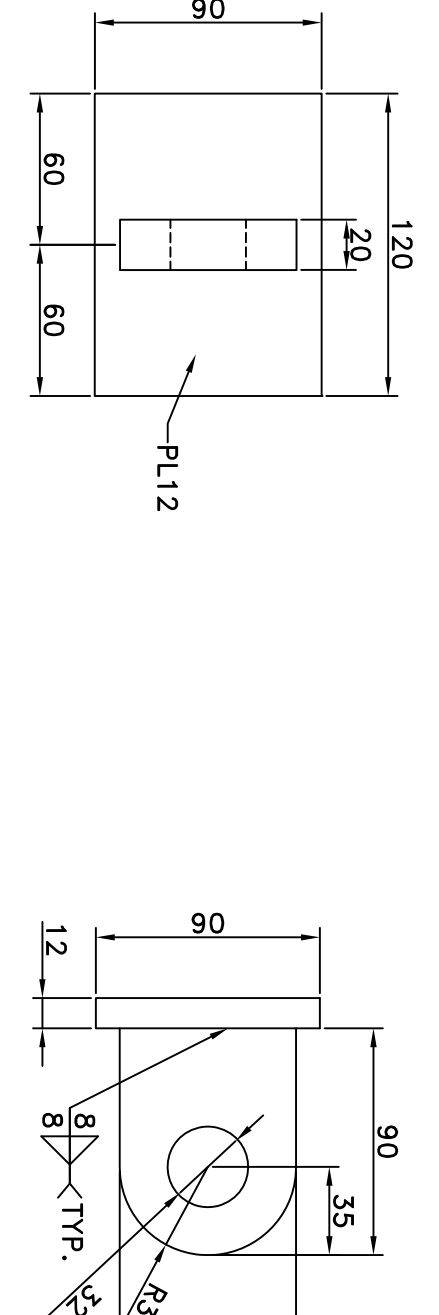
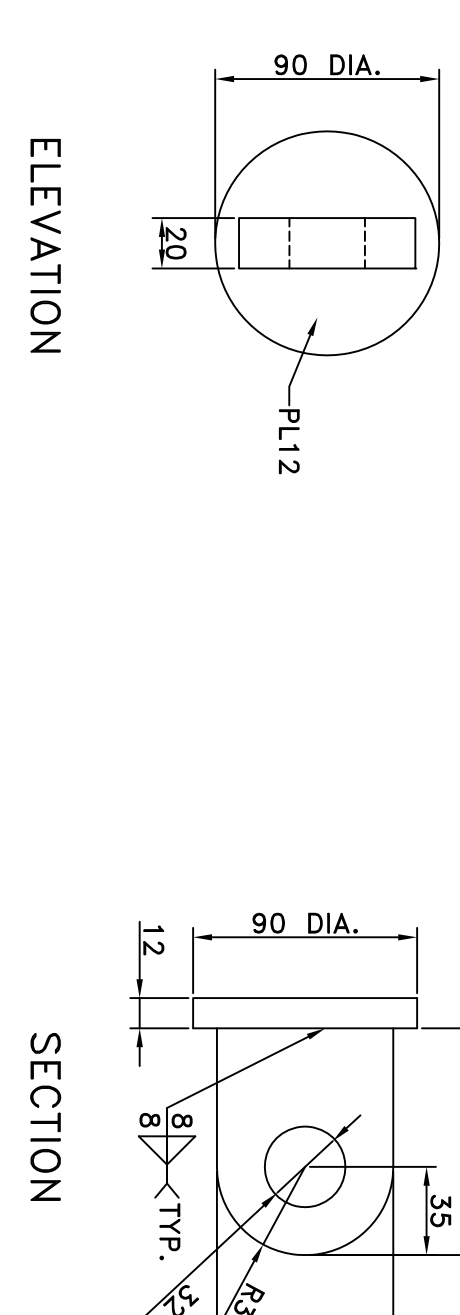
1. DIMENSIONS ARE IN MILLIMETRES UNLESS OTHERWISE STATED
2. CONTRACTOR TO SHOP PAINT ALL STEEL HARDWARE WITH TWO (2) COATS OF RED RUST INHIBITOR PAINT
3. ANCHOR ARM PIPES TO BE WELDED CENTRED ON HINGES. NEW ANCHOR ARMS TO INCLUDE ALL ASSOCIATED HINGES AS PER "FLOAT-TO-SSP CONNECTION" THIS PAGE
4. SEE "PLAN" ON DWG. C-1 FOR APPROXIMATE AGE 13 LOCATIONS. ANCHOR FIELD VERIFY 13 LOCATIONS WITH ENGINEER PRIOR TO WELDING
5. ONE (1) EXISTING ANCHOR ARM TO ALSO BE INSTALLED ON 1964 SSP WALL - SEE PLAN ON DWG. C-1



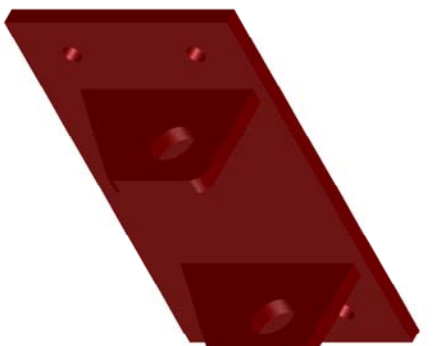
NOTE: H3 C/W 25 DIA. MACH. BOLT, NUT H.D. COTTER PIN AND 2 - 10 THK. PLASTIC BUSHINGS



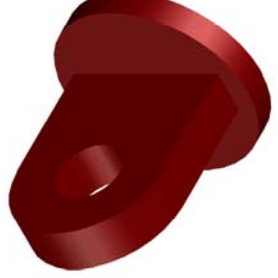
NOTE: H4 C/W 25 DIA. MACH. BOLT, NUT H.D. COTTER PIN AND 2 - 10 THK. PLASTIC BUSHINGS HINGE TO BE BACKED WITH 2 - 10 THK. PLATES



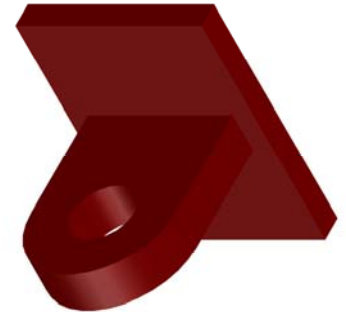
HINGE H3



HINGE H4



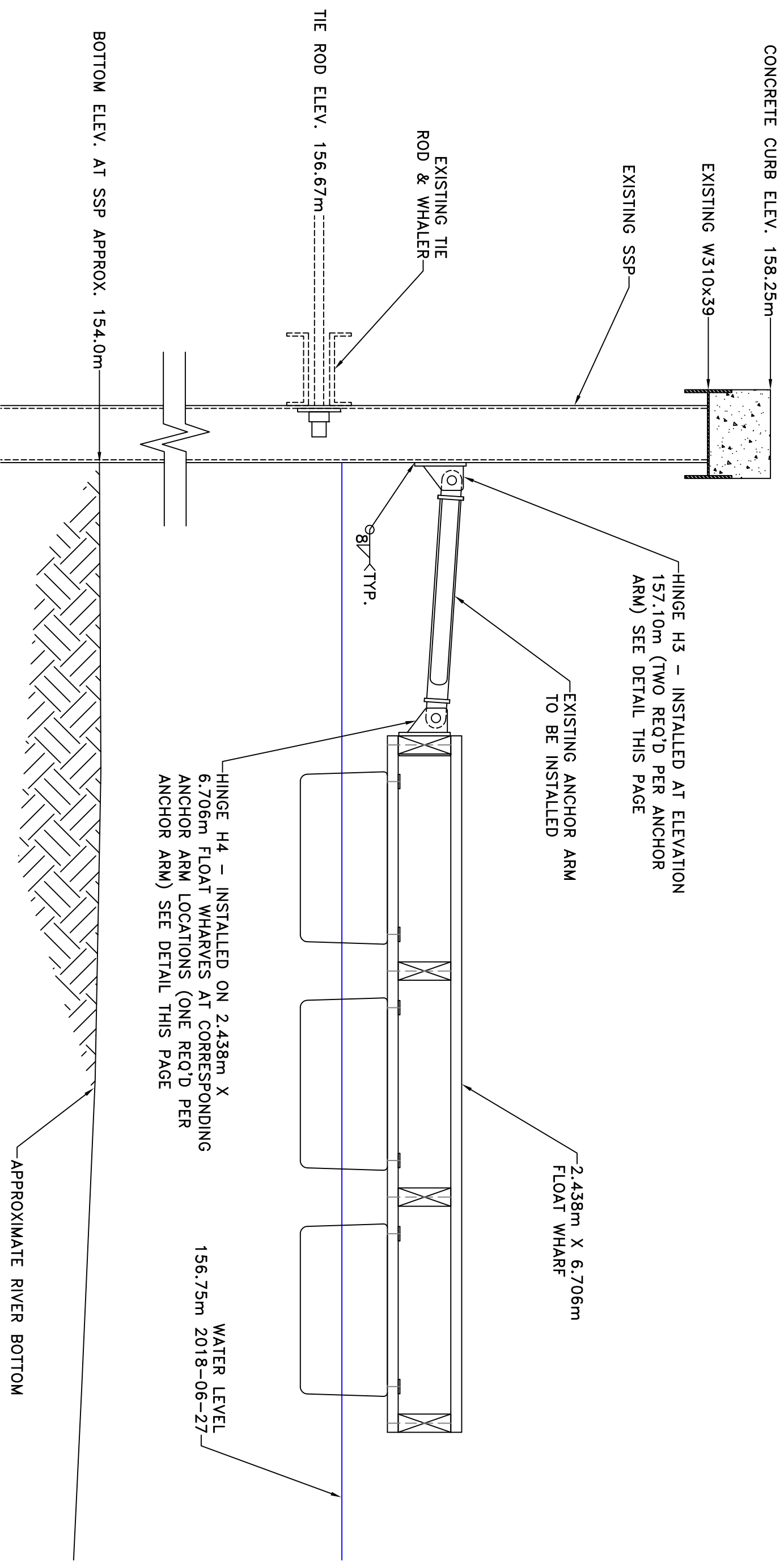
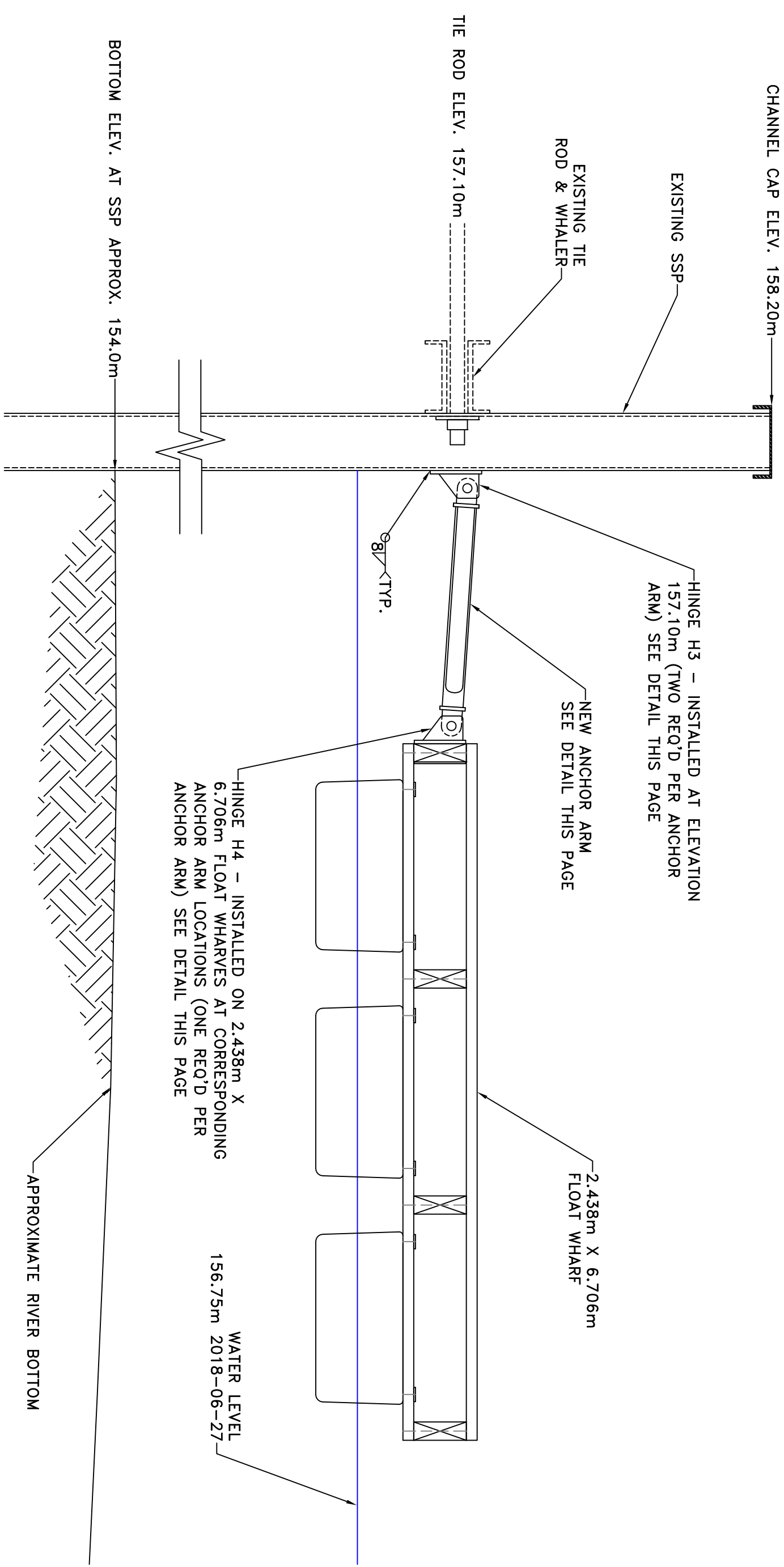
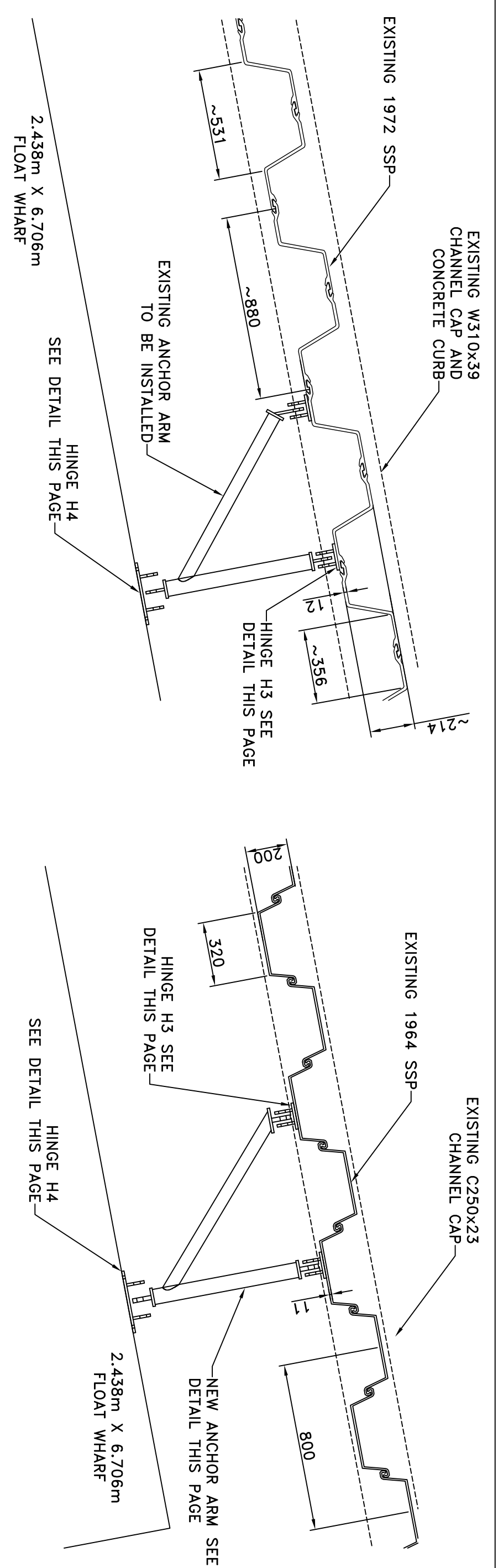
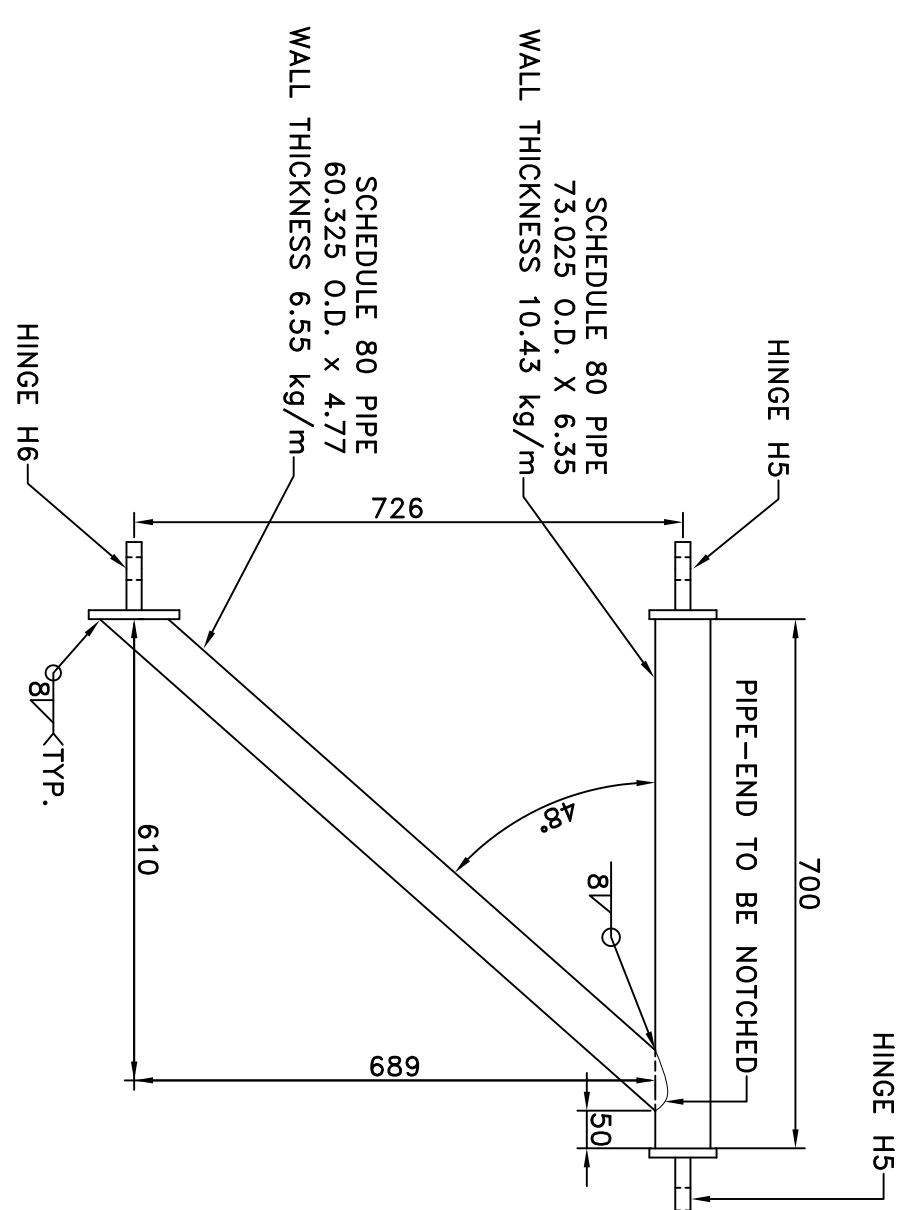
HINGE H5



HINGE H6



NEW ANCHOR ARM DETAIL



DESCRIPTION:		FLOAT-TO-SSP ANCHORS-CONSTRUCTION DETAILS	
DRAWN:	S.K.	APPROVED:	E.M.
DATE:	SEPT. 2018	DATE:	SEPT. 2018
LOCATION:			
HAY RIVER - EAST CHANNEL, NT			
DRAWING NO.:	C-5 OF 5	LOCATOR CODE:	5976