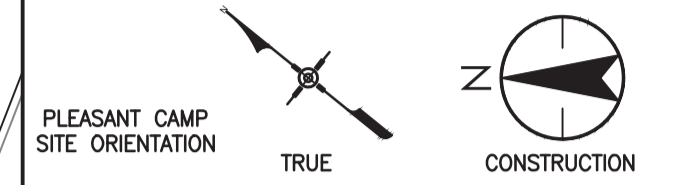


Consultant



PLEASANT CAMP SITE ORIENTATION  
HORIZONTAL DATUM NOTE  
PROJECTION: UTM, ZONE 8N, Geodetic Control Monument 48C508F  
DATUM: NAD 83 (CSRS)  
SURVEY COMPLETED BY UNDERHILL GEOMATICS, NOVEMBER 2015.  
COORDINATES DERIVED FROM RTK GPS OBSERVATIONS AND CONVENTIONAL SURVEY, RESULTS POST-PROCESSED USING CSRS-PPP SERVICE.

VERTICAL DATUM NOTE  
ELEVATIONS ARE ORTHOMETRIC (DATUM CGVD28) AND ARE DERIVED FROM GEODETIC CONTROL MONUMENT 48C508F, HAVING AN ELEVATION OF 248.700 METRES

ARCHITECTURAL 100.00 = GEODETIC 276.45

Seal



0	ISSUED FOR TENDER	18/03/21
Revision/	Description/Description	Date/Date
Revision		

Client/client	
---------------	--

CBSA / PWGSC

Project title/Titre du projet

PLEASANT CAMP PORT OF ENTRY, BC - RESIDENTIAL PATHWAY

Consultant Signature Box Only

Designed by/Concept par  
AF

Drawn by/Dessiné par  
JD

PWGSC Project Manager/Administrateur de Projets TPSGC  
NEDA NADERI

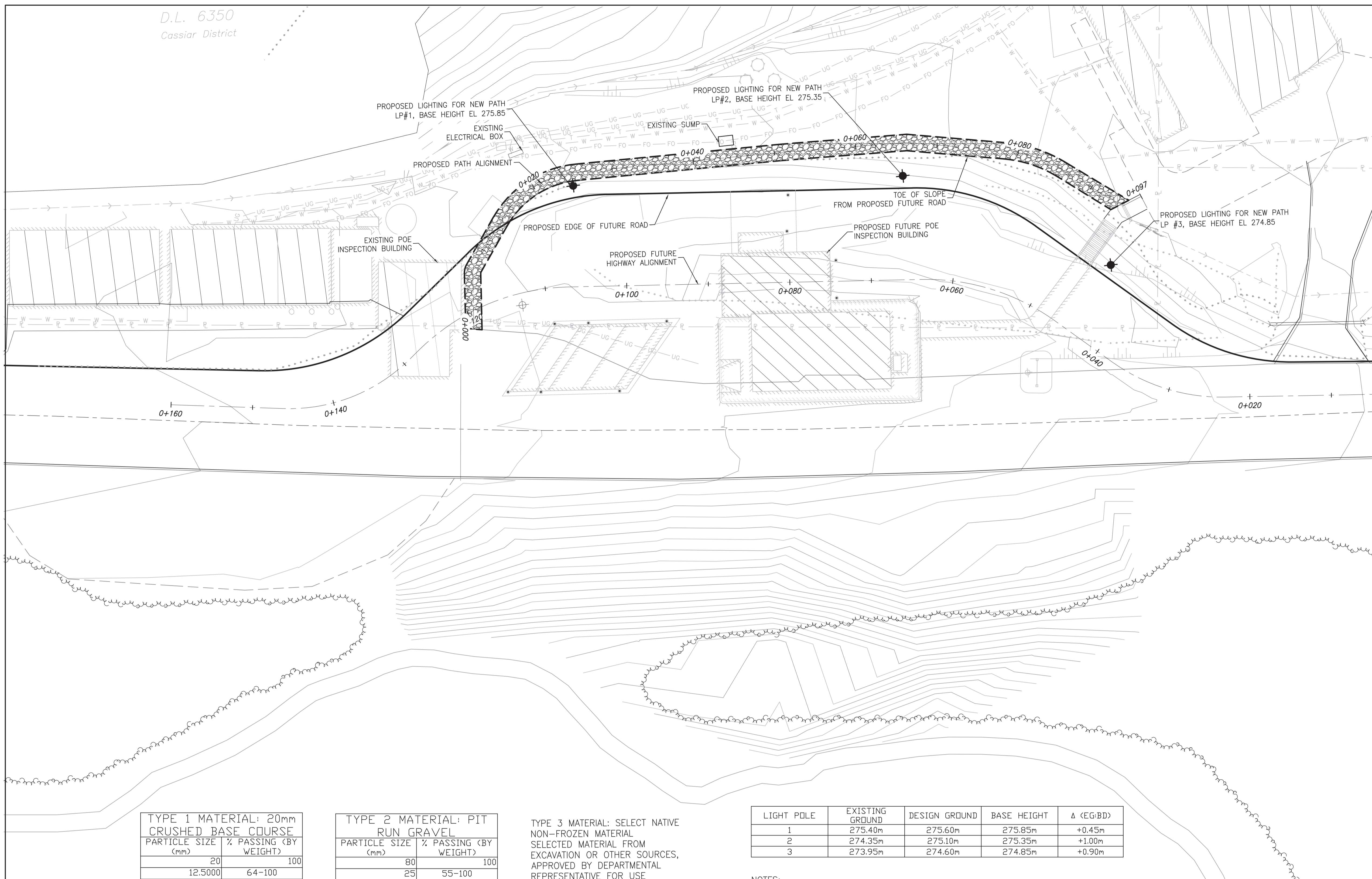
PWGSC, Regional Manager, Architectural and Engineering Services/  
Gestionnaire régional, Services d'architecture et de génie, TPSGC  
PAUL PREETIPAL

Drawing title/Titre du dessin

PLEASANT CAMP  
NEW PATH

Project No./No. du projet	Sheet/Feuille	Revision no./ La Révision no.
---------------------------	---------------	----------------------------------

R.083767.001 C207 0  
1 OF 1



TYPE 1 MATERIAL: 20mm CRUSHED BASE COURSE

PARTICLE SIZE (mm)	% PASSING (BY WEIGHT)
20	100
12.5000	64-100
5.0000	36-72
1.2500	12-42
0.3150	4-22
0.0800	3-6

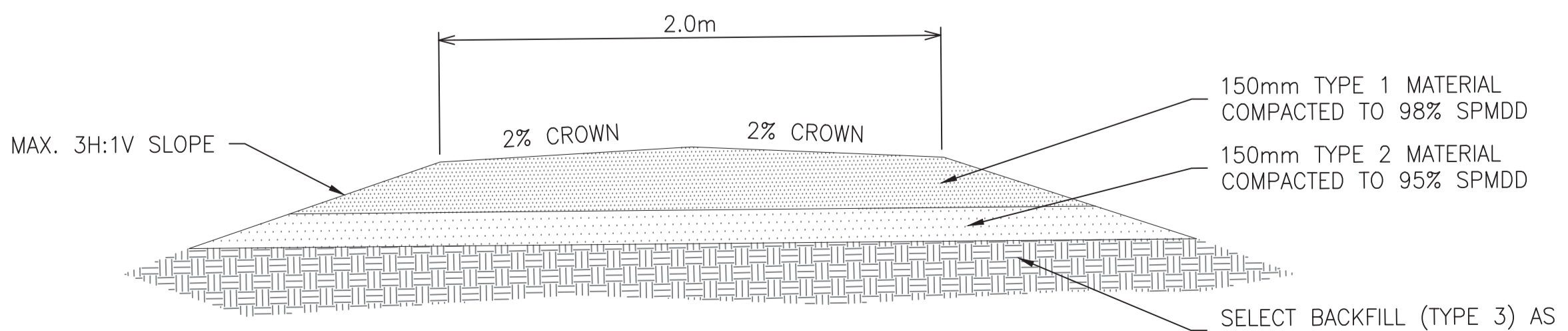
TYPE 2 MATERIAL: PIT RUN GRAVEL

PARTICLE SIZE (mm)	% PASSING (BY WEIGHT)
80	100
25	55-100
12.5200	42-84
5.0000	26-65
1.2500	11-47
0.3150	3-30

TYPE 3 MATERIAL: SELECT NATIVE NON-FROZEN MATERIAL SELECTED MATERIAL FROM EXCAVATION OR OTHER SOURCES, APPROVED BY DEPARTMENTAL REPRESENTATIVE FOR USE INTENDED, UNFROZEN AND FREE FROM ROCKS LARGER THAN 80mm, CINDERS, ASHES, SODS, REFUSE, OR OTHER DELETERIOUS MATERIALS.

LIGHT POLE	EXISTING GROUND	DESIGN GROUND	BASE HEIGHT	Δ (EG:BD)
1	275.40m	275.60m	275.85m	+0.45m
2	274.35m	275.10m	275.35m	+1.00m
3	273.95m	274.60m	274.85m	+0.90m

- NOTES:
- SEE ELECTRICAL DRAWINGS FOR FIXTURE, POLE AND BASE REQUIREMENTS
  - POLE BASE HEIGHT ELEVATIONS ARE REFERENCED TO TOP OF POLE BASE



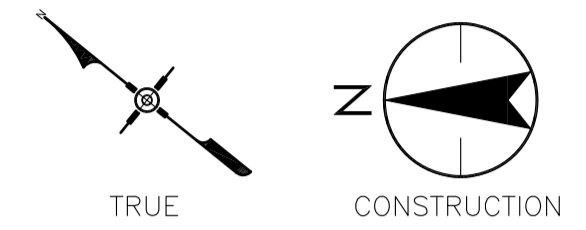
1 PATH TYP.  
C-207 SCALE: 1:20

**LEGEND:**

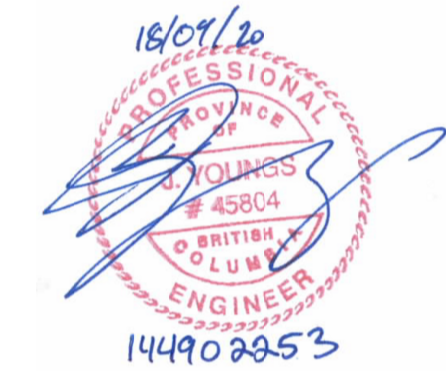
	EXISTING	PROPOSED
PROPERTY LINE	— P —	
CONTOURS	— 850 —	
EDGE OF ROAD	—	—
ROAD CENTERLINE	—	—
PATH		
TOE OF SLOPE		.....

Scale: 1:250

Consultant



Seal



Revision/Revision	Description/Description	Date/Date
0	ISSUED FOR TENDER	18/08/20

Client/client

CBSA / PWGSC

Project title/Titre du projet

PLEASANT CAMP PORT OF ENTRY, BC - RESIDENTIAL PATHWAY

Consultant Signature Box Only

Designed by/Concept par

RDS

Drawn by/Dessiné par

KG

PWGSC Project Manager/Administrateur de Projets TPSGC

NEDA NADERI

PWGSC Regional Manager, Architectural and Engineering Services / Gestionnaire régional, Services d'architecture et de génie, TPSGC

PAUL PREETIPAL

Drawing title/Titre du dessin

ELECTRICAL SITE PLAN AND DETAILS

Project No./No. du projet

R.083767.001

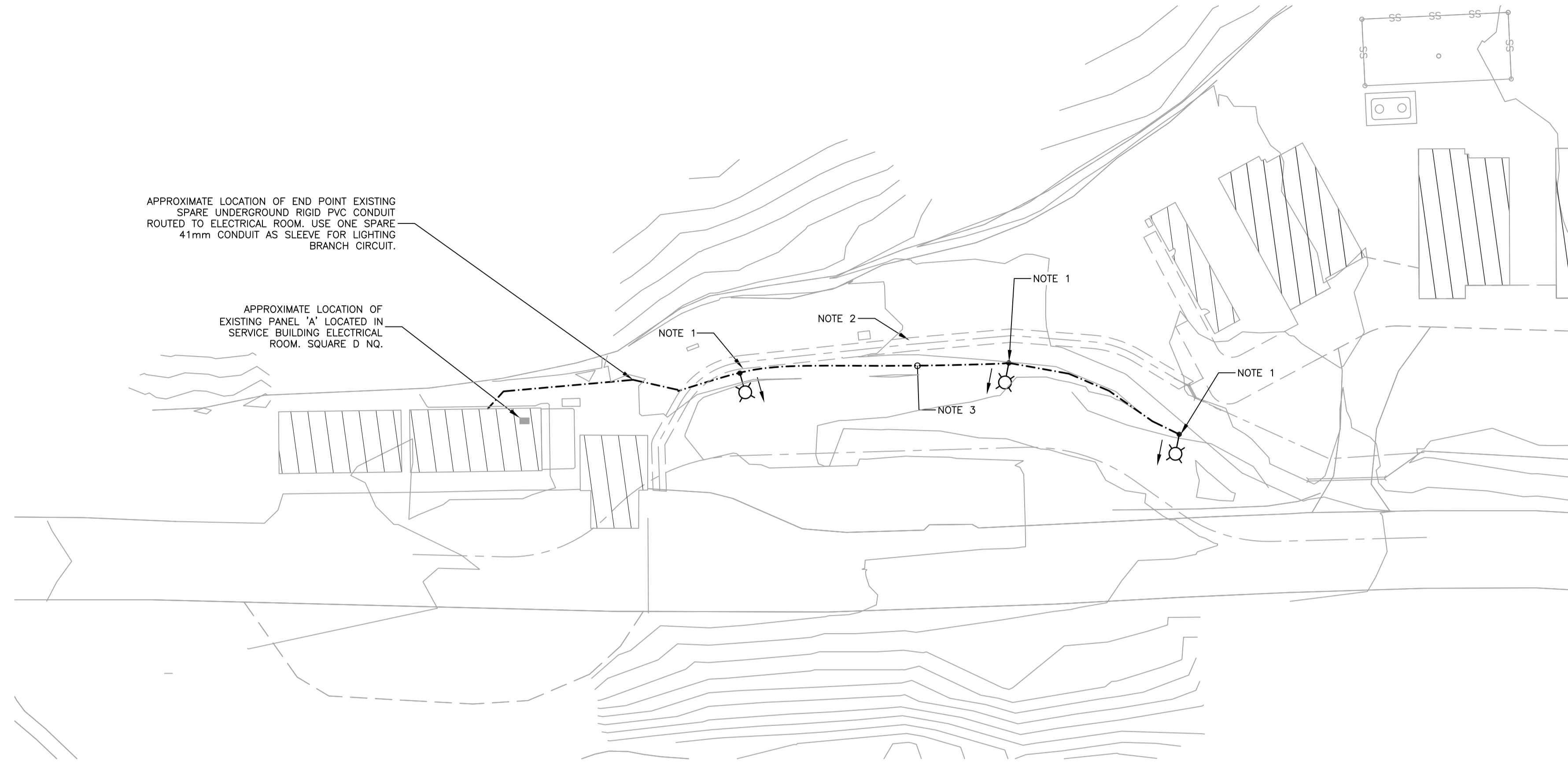
Sheet/Feuille

E100

1 OF 1

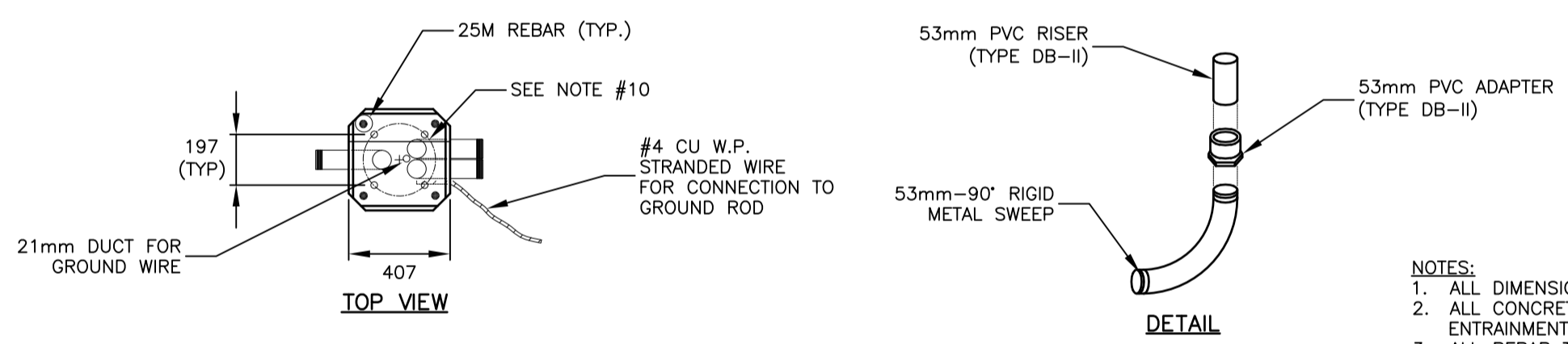
Revision no./La Révision no.

0



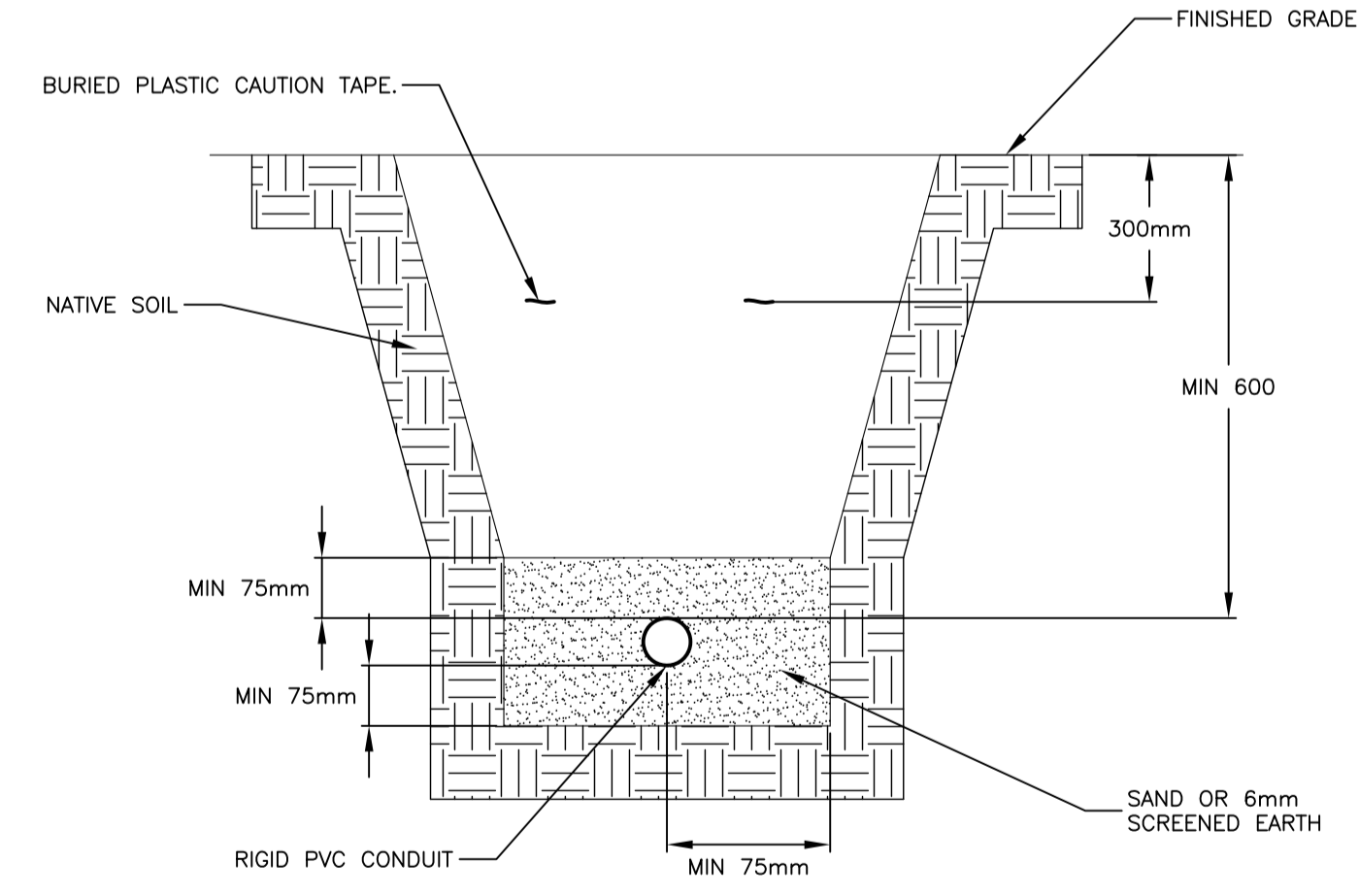
- NOTES:**
1. NEW LIGHT POLE, BASE AND LED FIXTURE. NEW POLE-MOUNTED LIGHT FIXTURES, TYPE 1. FEED FROM CIRCUIT A-9 (EXISTING 1P15A BREAKER). POLE DAVITS ARE TO BE ORIENTED AS INDICATED BY ARROWS. LOCATE POLE BASES AS INDICATED ON CIVIL DRAWINGS.
  2. GRAVEL PATH. SEE CIVIL DRAWING
  3. PROVIDE 2C#10 CU + #12 CU BOND IN 21mm RIGID PVC CONDUIT AS BRANCH CIRCUIT FOR FIXTURES. ROUTE CABLE AS SHOWN FROM FIXTURES TO PANEL A, VIA EXISTING SPARE CONDUIT, AND BURIED AS PER DETAIL 2/E100.
  4. LOCATIONS OF UNDERGROUND INSTALLATIONS ON THIS AND THE ATTACHED DRAWINGS HAVE BEEN PROVIDED BASED UPON INFORMATION FURNISHED BY OTHERS AND ACTUAL CONDITIONS MAY NOT BE ACCURATELY REPRESENTED. IT IS THE RESPONSIBILITY OF THE CONTRACTOR TO LOCATE ALL EXISTING UNDERGROUND INSTALLATIONS USING GROUND PENETRATING RADAR (GPR) PRIOR TO CONDUCTING ANY WORK THAT COULD AFFECT, OR BE AFFECTED BY, THE UNDERGROUND INSTALLATIONS. STANTEC ASSUMES NO RESPONSIBILITY FOR THE ACCURACY OF THE EXISTING UNDERGROUND INSTALLATIONS SHOWN OR FOR ANY ERRORS OR OMISSIONS THAT MAY BE REPRESENTED AS A RESULT OF INCORRECT INFORMATION PROVIDED TO STANTEC.

1 ELECTRICAL SITE PLAN  
E100 1:500



- NOTES:**
1. ALL DIMENSIONS IN MILLIMETERS UNLESS NOTED OTHERWISE.
  2. ALL CONCRETE TO BE MINIMUM 32 MPa WITH 5-8% AIR ENTRAINMENT.
  3. ALL REBAR TO BE MINIMUM 400 MPa. STIRRUPS TO BE MINIMUM 10M SPACED AT 300mm EXTRA STIRRUPS AT TOP AND BOTTOM AND ABOVE AND BELOW CONDUIT OPENINGS.
  4. ANCHOR BOLTS SHALL BE 25x915mm GRADE 400 WITH MINIMUM 500 MPa TENSILE STRENGTH. THE FIRST 450mm FROM THREADED END TO BE GALVANIZED. CONTRACTOR TO CONFIRM THAT BOLT DIAMETER IS COMPATIBLE WITH POLE BASE PRIOR TO ORDERING.
  5. PROVIDE 19mmx3000mm COPPER CLAD STEEL GROUND ROD (OR PLATE WITH EQUIVALENT SURFACE AREA) ADJACENT TO POLE BASE. CONNECT GROUND WIRE TO GROUND ROD USING COMPRESSION FITTING.
  6. ALL GROUND WIRE AND ATTACHMENTS TO BE PUT IN PLACE UPON INSTALLATION.
  7. RECOMPACT THE EXISTING GROUND TO 98% SPMD.
  8. FOUNDATION BEARING SURFACE SHALL CONSIST OF 300MM DEEP 20mm CBC GRAVEL, MOISTURE CONDITIONED AND COMPACTED TO MIN. 98% SPMD.
  9. BACKFILL MATERIAL COMPACTED TO MIN. 98% SPMD.
  10. ALL GROUND WIRE ATTACHMENTS TO BE CUT IN PLACE UPON INSTALLATION.
  11. CONTRACTOR TO CONFIRM ANCHOR BOLT SIZE AND SPACING PRIOR TO CONSTRUCTION.
  12. CAP AND SEAL ENDS OF UNUSED CONDUIT.

3 POLE-MOUNTED LIGHT BASE DETAIL  
E100 N.T.S.



- NOTES:**
1. MAINTAIN MINIMUM 300mm SEPARATION BETWEEN POWER AND OTHER CONDUITS.
  2. WHERE WATER SERVICE RUNS PARALLEL TO CONDUITS, ENSURE MINIMUM 300mm SEPARATION.

2 CONDUIT TRENCH DETAIL  
E100 N.T.S.

LUMINAIRE TYPE: 1	DESCRIPTION	LAMP	MOUNT	VOLTS	WATTAGE (MAX)	LUMENS (MIN)	DETAILS
							HEAVY-DUTY ALUMINUM CONSTRUCTION WITH REMOVABLE DOOR, INJECTION MOLDED ACRYLIC OPTICS, INTEGRAL 10KV TRANSIENT LINE SURGE PROTECTION, EXPECTED LUMEN MAINTENANCE OF 95% AT 60,000 HOURS LIFE, IP66 ENCLOSURE RATING, GREY POLYESTER POWEROAT FINISH, INTEGRAL PHOTOCELL, COLOUR TEMPERATURE OF 4000K, TYPE 3 DISTRIBUTION, BUG RATING OF B3-U0-G3, CRI OF AT LEAST 70, STANDARD OF ACCEPTANCE: EATON OVF LED ROADWAY OR EQUAL.

- NOTES:**
1. SPECIFIED LUMINAIRE REPRESENTS THE MINIMUM ACCEPTABLE PRODUCT STANDARD. CONTRACTOR MAY PROPOSE EQUIVALENT PRODUCTS THAT MEET OR EXCEED THE MINIMUM PRODUCT STANDARD FOR REVIEW BY THE DEPARTMENTAL REPRESENTATIVE AFTER TENDER AWARD DURING SHOP DRAWING REVIEW PROCESS.

