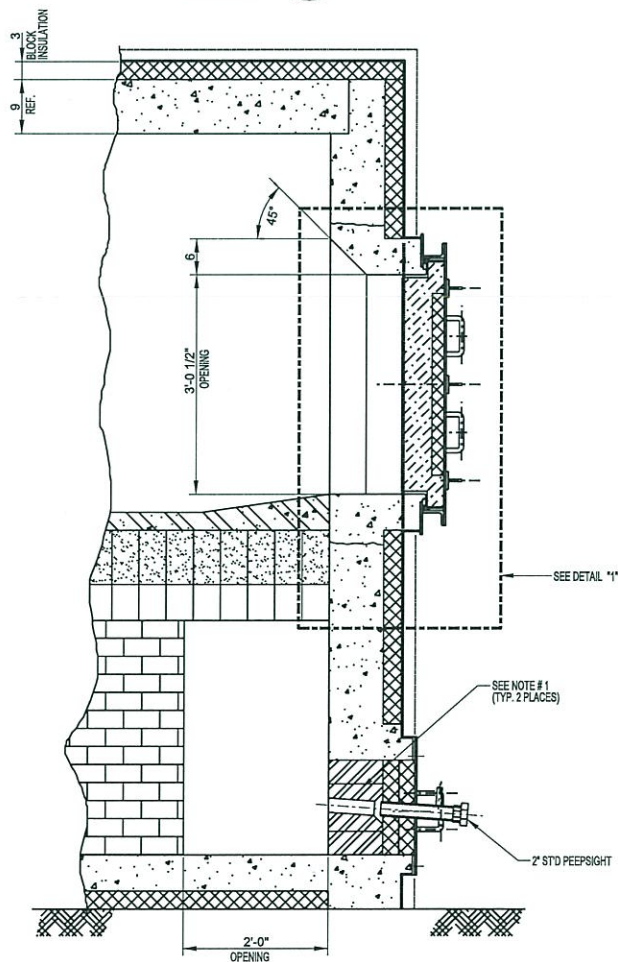
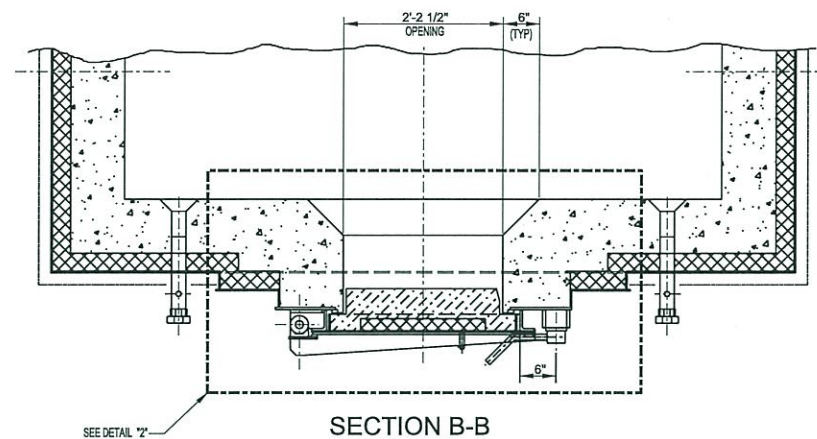


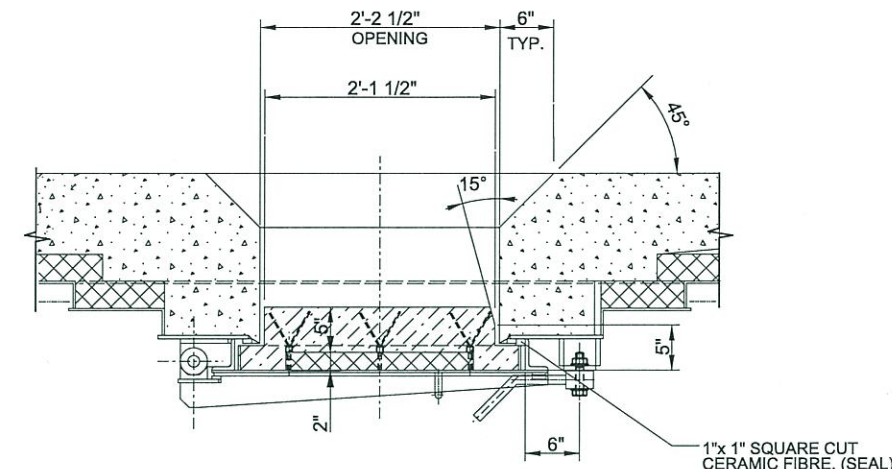
DETAIL 1
SCALE 3/4" = 1'-0"



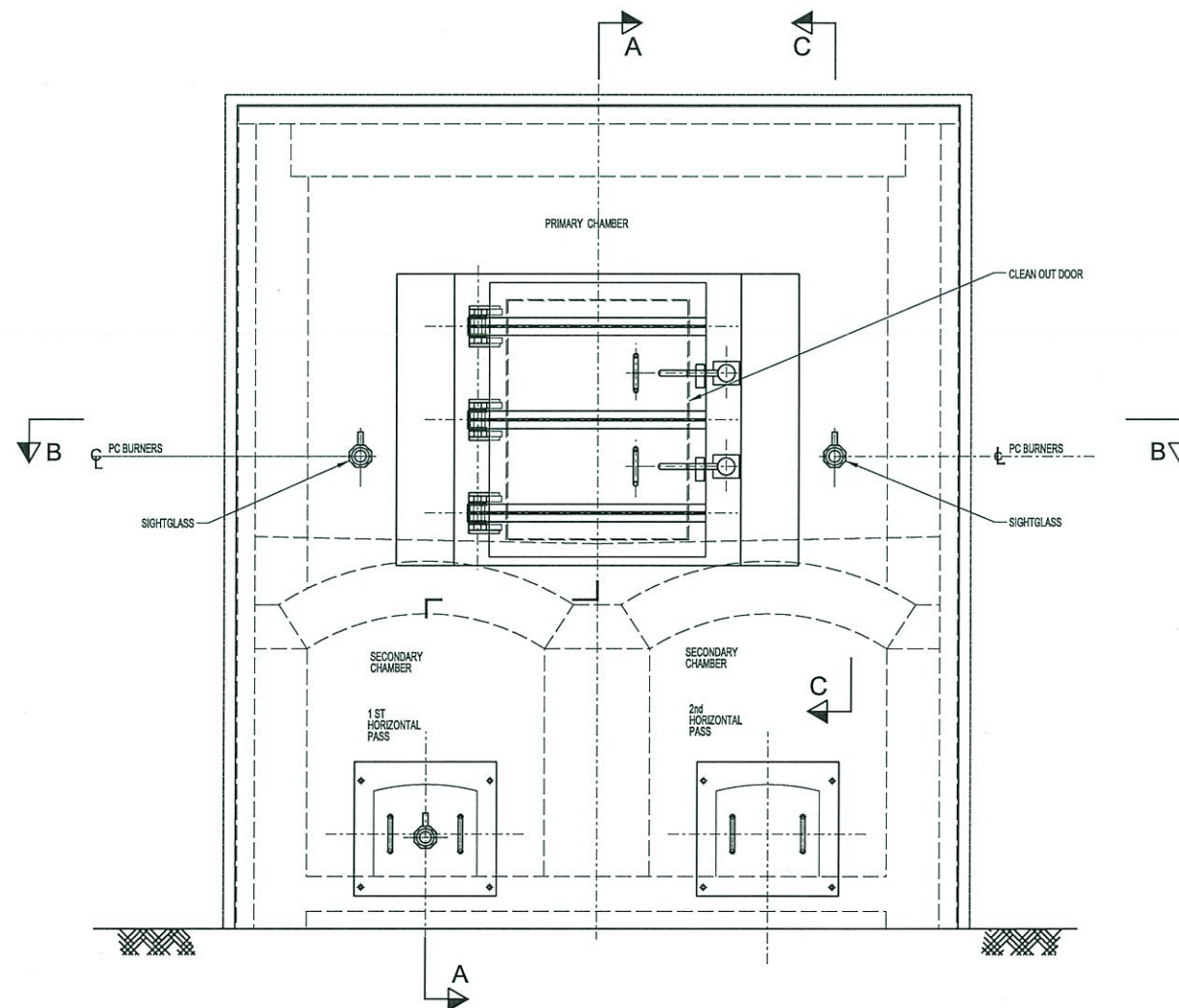
SECTION A-A



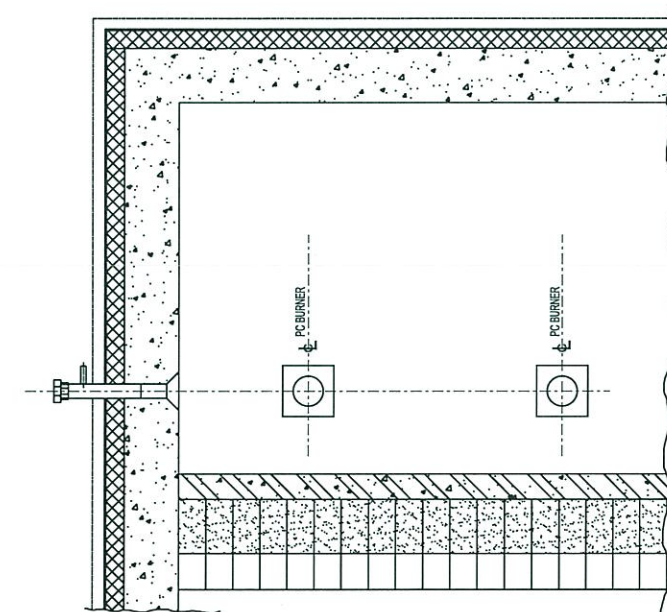
SECTION B-B



DETAIL 2
SCALE 3/4" = 1'-0"



FRONT ELEVATION



SECTION C-C

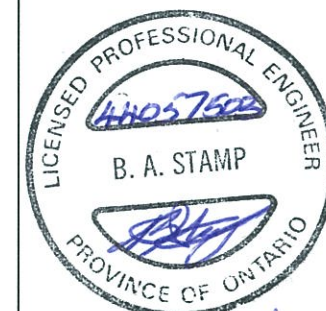
GENERAL NOTES

LEGEND

- 1900°F BLOCK INSULATION.
- 60% ALUMINA FIREBRICK (Mizzou or Equal)
- 60% ALUMINA HIGH DUTY PLASTIC REFRACTORY (Super G Bond Plus or Equal)
- 2600°F HIGH STRENGTH CASTABLE (Kaoconcrete HS or equal).
- GREEN CAST (45L PLUS OR EQUAL.)

NOTES

- OPENING TO BE FILLED WITH FIREBRICK (DRY) AND BACKED-UP WITH 3" BLOCK INSULATION.
- REFRACTORY ANCHORING SYSTEM BY CONTRACTOR. CONTRACTOR TO VERIFY ALL DIMENSIONS.



0	ISSUED FOR TENDER.	OCT 09, 18
NO	DESCRIPTION	DATE
REVISIONS		

PROJECT DESCRIPTION

TITLE: AA INCINERATOR
REFRACTORY
REPLACEMENT

CLIENT: BUILDING 201
CFIA LABORATORY
OTTAWA CANADA

DRAWING TITLE:

GENERAL ARRANGEMENT
REFRACTORY LAYOUT
FRONT ELEVATION

ALBURN ENGINEERING LIMITED
OSHAWA ONTARIO

SCALE: 3/4" = 1'-0" DATE

DRAWN: L. Mitchell Sept 6, 18

CHECKED: B. Stamp Sept 6, 18

PROJECT No. EN5002

DRAWING NUMBER REV.

5002-GA-R-02 0