

RETURN BIDS TO:

RETOURNER LES SOUMISSIONS À:

See Section 1.

Voir Section 1.

SOLICITATION AMENDMENT

MODIFICATION DE L'INVITATION

The referenced document is hereby revised; unless otherwise indicated, all other terms and conditions of the Solicitation remain the same.

Ce document est par la présente révisé; sauf indication contraire, les modalités de l'invitation demeurent les mêmes.

Solicitation No. - N° de la demande 10064676/A	Amendment No. - N° de modification 001
---	---

Solicitation closes – La demande prend fin : at – à See Section 1 Voir Section 1 on – le See Section 1 Voir Section 1	File No. - N° de dossier 10064676
---	--

No of Page/ N° de page	10
---------------------------	----

Date of Solicitation – Date de la demande

2018-10-25

Address inquiries to – Adresser toute demande de renseignement à :

See Section 2, Article 4.1.

Voir Section 2, Article 4.1

Destination

See Section 2, Annex A.

Voir Section 2, Annexe A.

Instructions:

Unless otherwise specified in the bid solicitation, all prices quoted must be net prices in Canadian funds including Canadian customs duties, excise taxes, must be FOB, including all delivery charges to destination(s) as indicated. The amount for Applicable Taxes is to be shown as a separate item.

Instructions:

Sauf indication contraire dans la demande de soumissions, tous les prix indiqués doivent être des prix nets, en dollars canadiens, comprenant les droits de douane canadiens, la taxe d'accise et doivent être FAB, y compris tous frais de livraison à la (aux) destination(s) indiqué(s). Le montant des taxes applicables doit apparaître séparément.

Supplier Name and Address – Nom et adresse du fournisseur
Telephone No. - N° de téléphone
Facsimile No. - N° de télécopieur
Name and title of person authorized to sign on behalf of supplier (type or print) Nom et titre de la personne autorisée à signer au nom du fournisseur (caractère d'impression)
Signature : _____ Date : _____

Amendement 001 est publiée à modifier sollicitation numéro **#10064676** comme suit :

Reportez-vous à la page 11 de 11, plans d'étage de l'annexe C

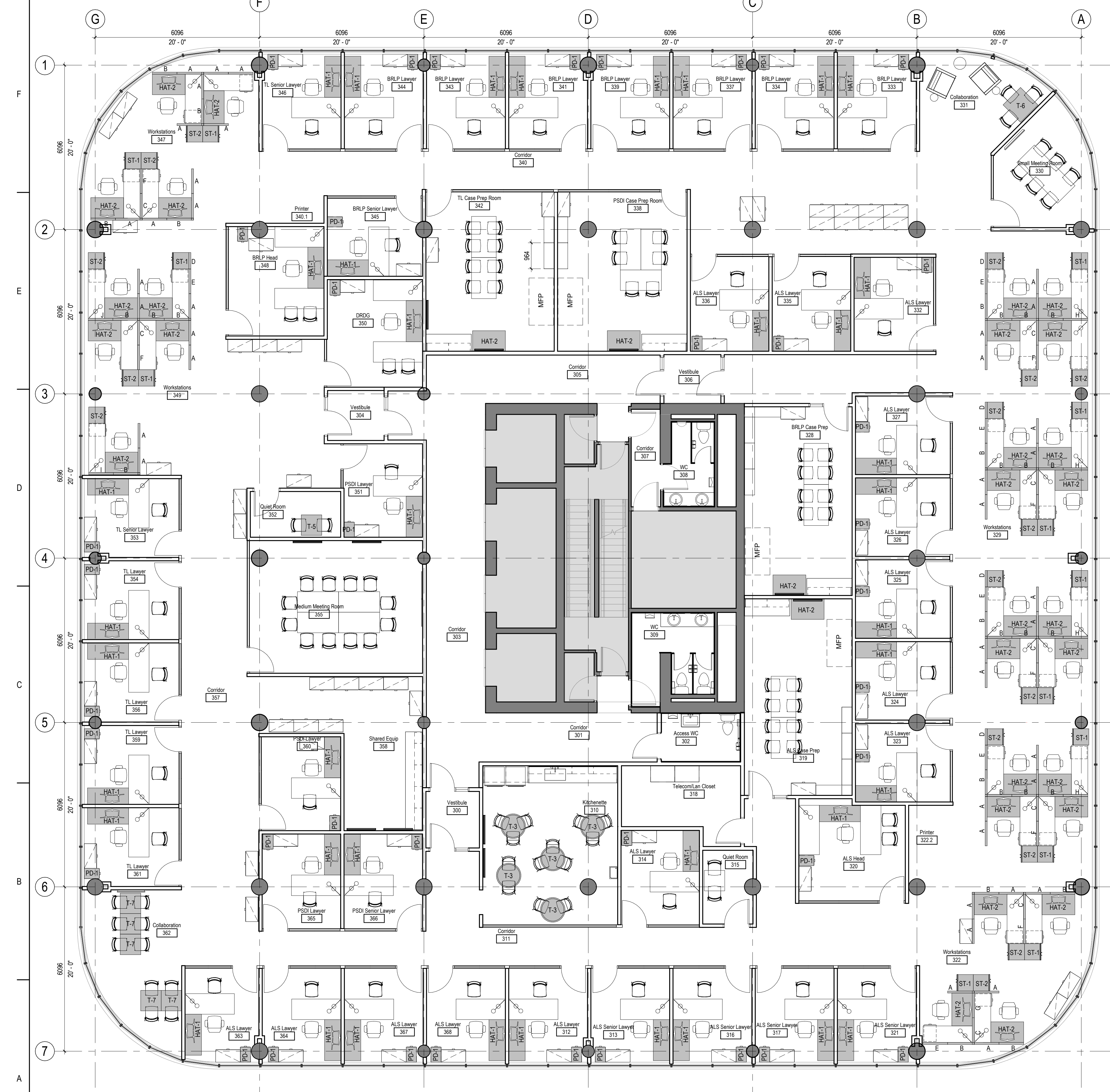
SUPPRIMER :

La pièce jointe de plan d'étage

REEMPLACER PAR :

Le plan d'étage ci-joint

TOUTES LES AUTRES MODALITÉS ET CONDITIONS DEMEURENT LES MÊMES.

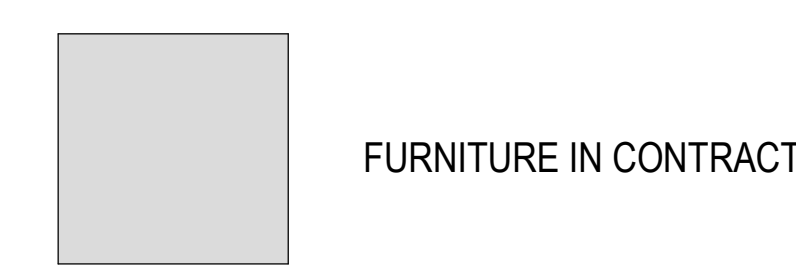


FURNITURE TENDER-LEVEL 3-CAT1&2						
QTY	CODE	GOUCID	ITEM #	LINE #	ITEM	CATEGORY
40	A			450	Type A - Seated Privacy Height. Fabric upper and lower element. Non-powered on both sides. 914mm wide.	CAT1A
28	B			5642	Type B - Seated Privacy Height. Fabric upper and lower element. Powered one side and non-powered on one side. 914mm wide. Outlets on upper element.	CAT1A
8	C			5854	Type C - Seated Privacy Height. Fabric upper and lower element. Powered both sides on upper element. 914mm wide.	CAT1A
5	D			424	Type D - Seated Privacy Height. Fabric upper and lower element. Non-powered on both sides. 610mm wide.	CAT1A
6	E			447	Type E - Seated Privacy Height. Fabric upper and lower element. Accessory rail on upper element, one side. Non-powered on both sides. 914mm wide.	CAT1A
7	F			446	Type F - Seated Privacy Height. Fabric lower element. Accessory rail on upper element, both sides. Non-powered on both sides. 914mm wide.	CAT1A
1	G			5838	Type G - Seated Privacy Height. Fabric upper element one side, powered. Accessory rail upper one side. Fabric lower element, both sides. Outlets on upper elements. 914mm wide.	CAT1A
4	H			4892	Type H - Seated Privacy Height. Accessory rail on upper element, both sides. Fabric lower element, powered both sides. Outlets below the work surface. 914mm wide.	CAT1A
1	I			6765	Type I - Seated Privacy Height. Accessory rail on upper element one side. Fabric upper element one side. Fabric lower element powered one side. Fabric lower element non-powered one side. Outlets above the work surface. 914mm wide.	CAT1A
1	J			4893	Type J - Seated Privacy Height. Fabric upper element one side. Accessory rail on upper element one side. Fabric lower element, powered both sides. Outlets below the work surface. 914mm wide.	CAT1A
39	PD-1	SPPDWLxxxx2Fxxxxx22	612		Pedestal - Locking - N casters. Metal. Box/boxfile. 22" depth.	CAT1B
13	ST-1	SPPTFSMxxLHFC542424	1988		Storage Tower - Left. 54"x24"xs24"w. 2 file drawers at bottom. Freestanding. Metal. Hinged left.	CAT1B
16	ST-2	SSPTFSMxxRHFC542424	1992		Storage Tower - Right. 54"x24"xs24"w. 2 file drawers at bottom. Freestanding. Metal. Hinged right.	CAT1B
5	T-3	MTxxSCLxxxxxxx36xx	470		Meeting Table - 36" dia. Laminate. Star cross base.	CAT1B
1	T-6	MTxxSCLxxxxxxx3636	461		Meeting Table - Square 36"x36". Laminate. Star cross base.	CAT1B
5	T-7	MTxxSCLxxxxxxx3636	460		Meeting Table - Square 30"x30". Laminate. Star cross base.	CAT1B
39	HAT-1	FSCAE46024			Height Adjustable Table. Sit/stand. Electrically assisted.	CAT2
33	HAT-2	FSCAE4630			Height Adjustable Table. Sit/stand. Electrically assisted.	CAT2

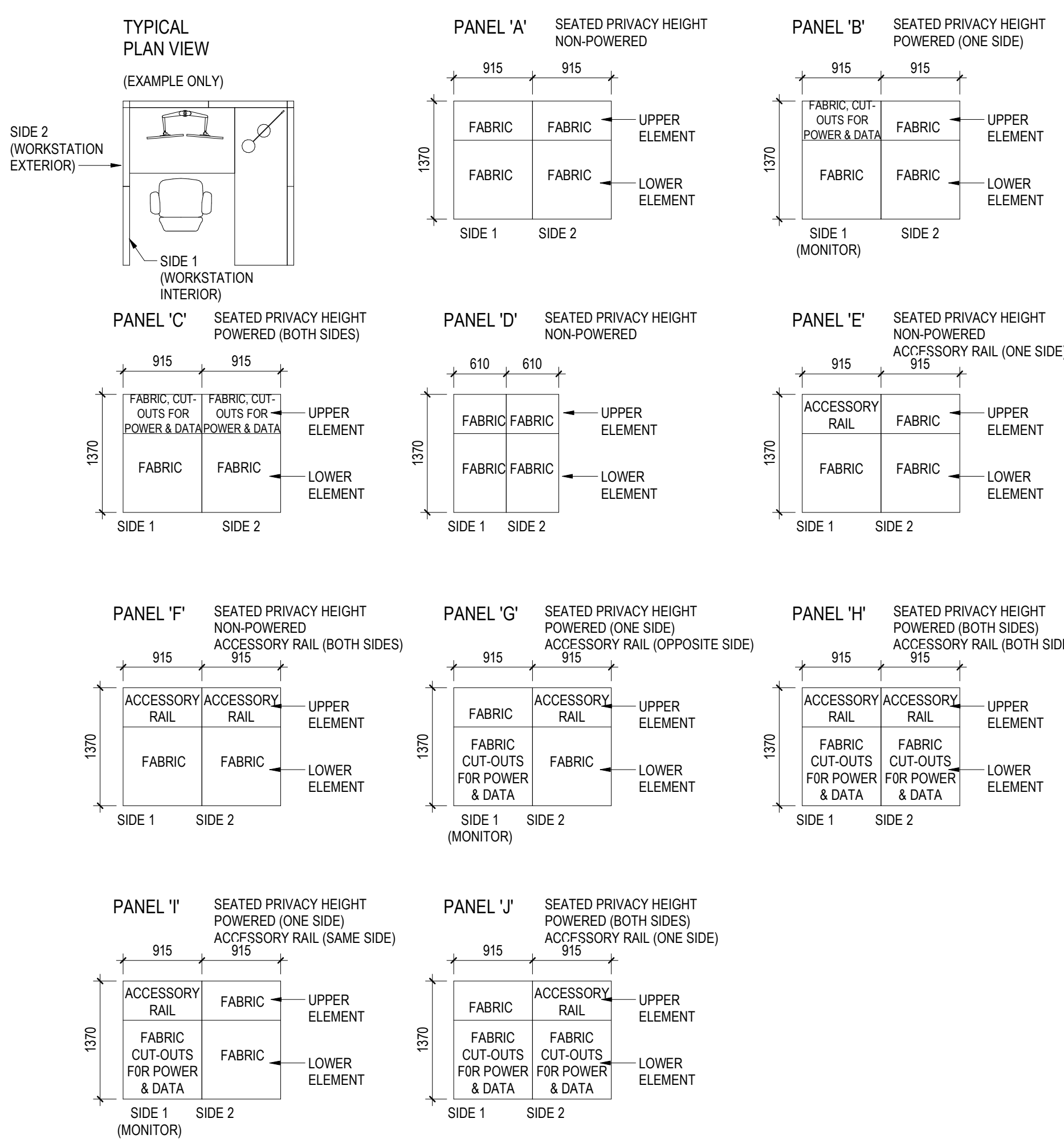
GENERAL NOTES - CATEGORY 1 & 2

- FURNITURE SUPPLIER TO PROVIDE POWER / VOICE / DATA IN SYSTEMS FURNITURE AS PER ELECTRICAL DRAWINGS.
- CONTRACTOR TO COORDINATE ELECTRICAL POWER / VOICE / DATA TO SYSTEMS FURNITURE AND FURNITURE AS PER ELECTRICAL DRAWINGS.
- ONLY FURNITURE LABELED APPLIES TO CATEGORY 1 & 2
- REFER TO DRAWING F03 & F04 FOR WORKSTATION ACCESSORIES

FURNITURE IN CONTRACT



FURNITURE PANEL LEGEND



FURNITURE TENDER - LEVEL 3 - CATEGORY 1 & 2
F01 1:75

04/26/18 10:27:01 PM

ORIGINAL SHEET - ARCH D

Consultant	By	Checked	Approved
	JAV	JAV	JAV
	2018.06.27	2018.06.27	2018.06.27
	11/11/18/18/18	11/11/18/18/18	11/11/18/18/18



FINALIZED FURNITURE TENDER DOCUMENTS
2018

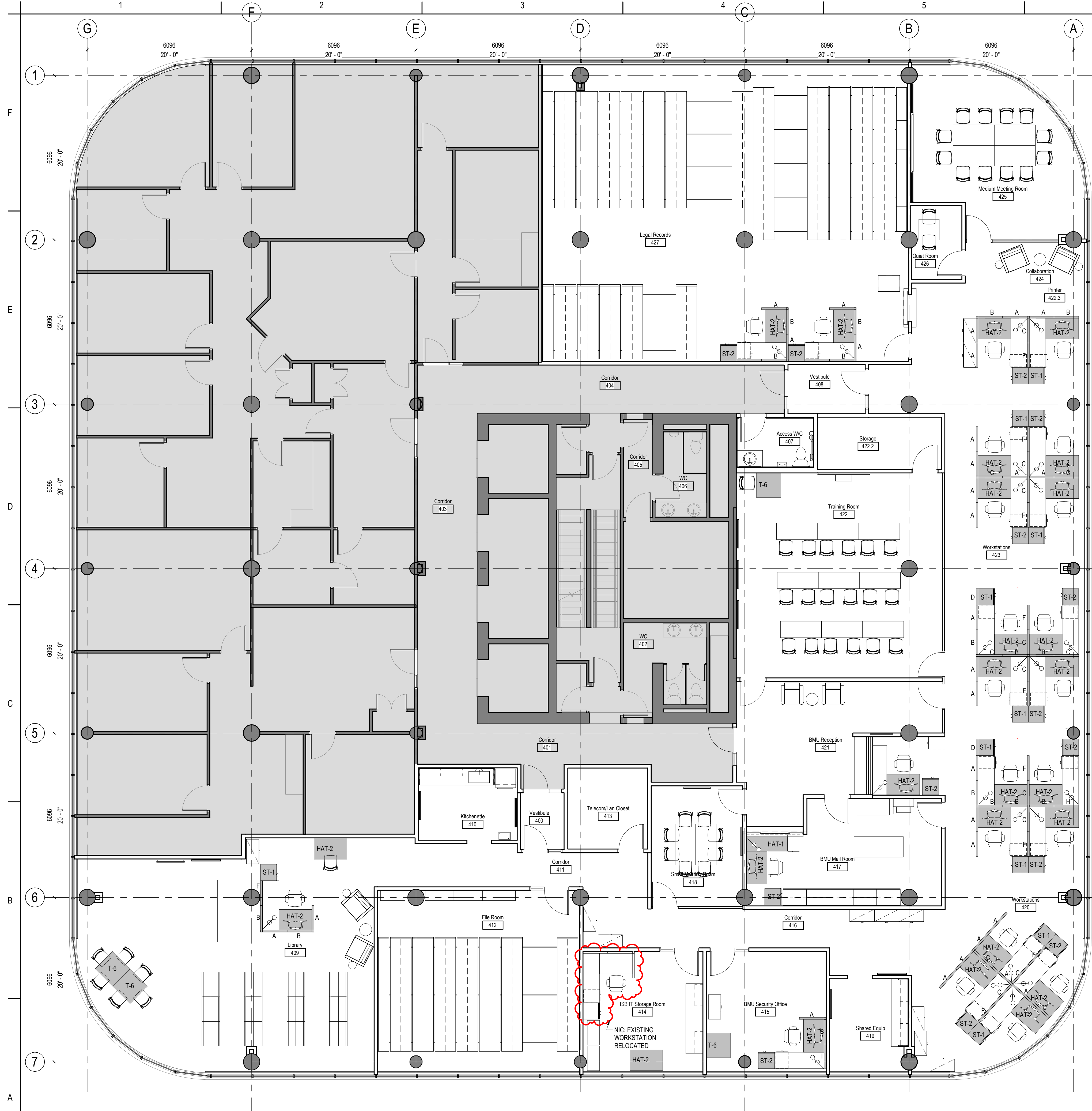
Permit/Seal

Client/Project: DREAM

OGD RENOVATIONS SASKATOON SQUARE

410 22nd Street East Saskatoon, SK

Project No.: 144401558
File Name: N/A
Scale: As indicated
Author: Designer: Checker:
Dwn. Dsgn. Chkd. YYYYMMDD
Title: FURNITURE TENDER LEVEL 3 CATEGORY 1 & 2
Revision: 1
Drawing No. **F01**



FURNITURE TENDER-Level 4-CAT1&2						
QTY	CODE	GOUCID	ITEM #	LINE #	ITEM DESCRIPTION	CATEGORY
29	A			450	Type A - Seated Privacy Height. Fabric upper and lower element. Non-powered on both sides. 914mm wide.	CAT1A
16	B			5842	Type B - Seated Privacy Height. Fabric upper and lower element. Powered one side and non-powered on one side. 914mm wide. Outlets on upper element.	CAT1A
15	C			5854	Type C - Seated Privacy Height. Fabric upper and lower element. Powered both sides on upper element. 914mm wide.	CAT1A
2	D			424	Type D - Seated Privacy Height. Fabric upper and lower element. Non-powered on both sides. 610mm wide.	CAT1A
12	F			446	Type F - Seated Privacy Height. Fabric lower element. Accessory rail on upper element, both sides. Non-powered on both sides. 914mm wide.	CAT1A
1	H			4892	Type H - Seated Privacy Height. Accessory rail on upper element, both sides. Fabric lower element, powered both sides. Outlets below the work surface. 914mm wide.	CAT1A
1	I			6765	Type I - Seated Privacy Height. Accessory rail on upper element one side. Fabric upper element one side. Fabric lower element powered one side. Fabric lower element non-powered one side. Outlets above the work surface. 914mm wide.	CAT1A
10	ST-1	SPPTFSMxLHFFCD542424	1988		Storage Tower - Left. 54"x24"x24"w. 2 file drawers at bottom. Freestanding. Metal. Hinged left.	CAT1B
14	ST-2	SSPTFSMxRHFFCD542424	1992		Storage Tower - Right. 54"x24"x24"w. 2 file drawers at bottom. Freestanding. Metal. Hinged right.	CAT1B
4	T-6	MTXoSCLX500000003636	461		Meeting Table. Square 36"x36". Laminate. Star cross base.	CAT1B
1	HAT-1	FSCAE6024			Height Adjustable Table. Sit/stand. Electrically assisted.	CAT2
26	HAT-2	FSCAE4830			Height Adjustable Table. Sit/stand. Electrically assisted.	CAT2

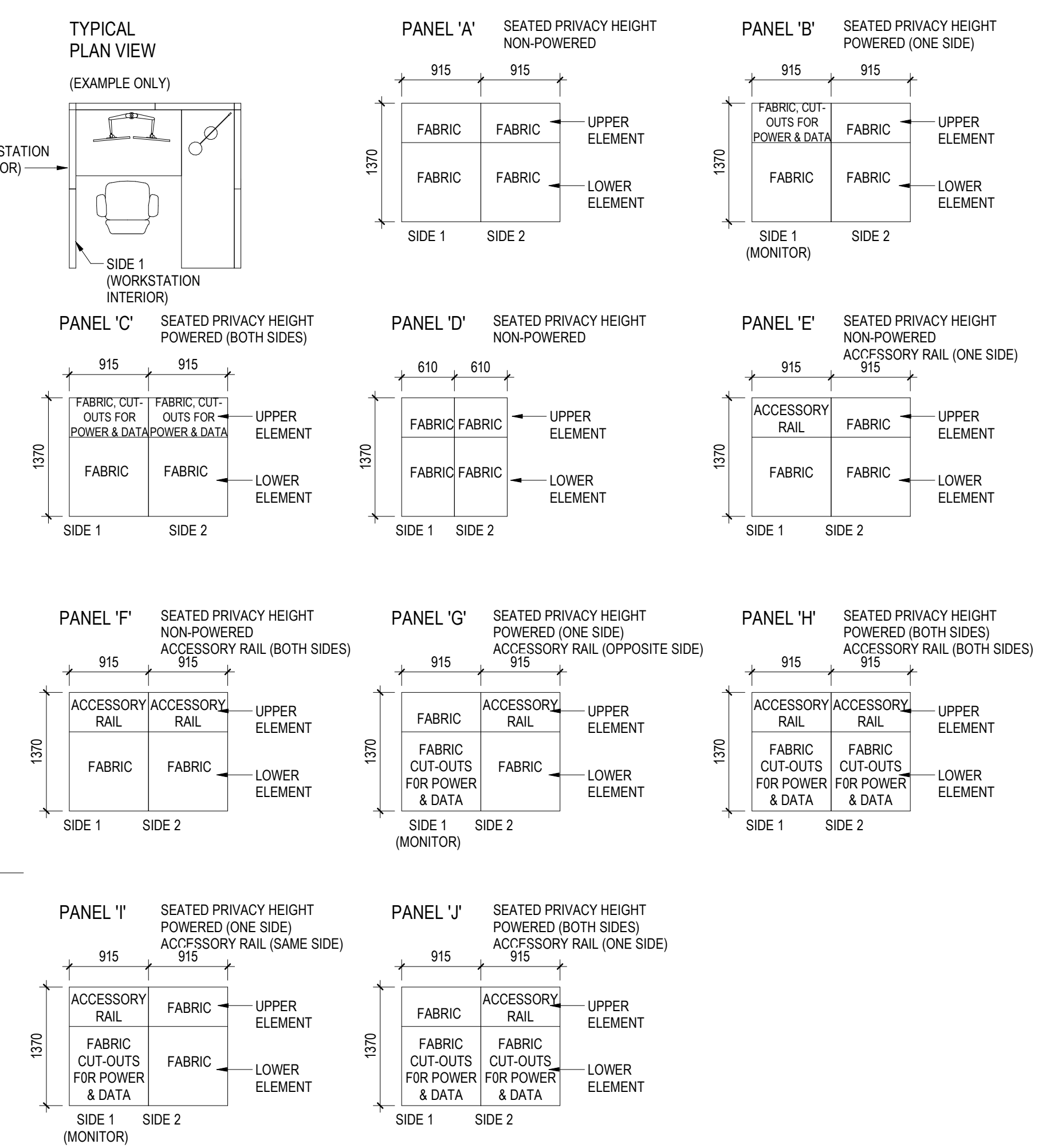
GENERAL NOTES - CATEGORY 1 & 2

- FURNITURE SUPPLIER TO PROVIDE POWER / VOICE / DATA IN SYSTEMS FURNITURE AS PER ELECTRICAL DRAWINGS.
- CONTRACTOR TO COORDINATE ELECTRICAL POWER / VOICE / DATA TO SYSTEMS FURNITURE AND FURNITURE AS PER ELECTRICAL DRAWINGS.
- ONLY FURNITURE LABELED APPLIES TO CATEGORY 1 & 2
- REFER TO DRAWING F03 & F04 FOR WORKSTATION ACCESSORIES

FURNITURE IN CONTRACT



FURNITURE PANEL LEGEND



1 FURNITURE TENDER - LEVEL 4 - CATEGORY 1 & 2

F02 1:75



Consultant

NO.	DATE	BY	REVISION
1	2018.06.27	JH	ISSUED FOR TENDER
2	2018.06.27	JH	ISSUED FOR TENDER
3	2018.06.27	JH	ISSUED FOR TENDER
4	2018.06.27	JH	ISSUED FOR TENDER
5	2018.06.27	JH	ISSUED FOR TENDER
6	2018.06.27	JH	ISSUED FOR TENDER
7	2018.06.27	JH	ISSUED FOR TENDER
8	2018.06.27	JH	ISSUED FOR TENDER
9	2018.06.27	JH	ISSUED FOR TENDER
10	2018.06.27	JH	ISSUED FOR TENDER
11	2018.06.27	JH	ISSUED FOR TENDER
12	2018.06.27	JH	ISSUED FOR TENDER
13	2018.06.27	JH	ISSUED FOR TENDER
14	2018.06.27	JH	ISSUED FOR TENDER
15	2018.06.27	JH	ISSUED FOR TENDER
16	2018.06.27	JH	ISSUED FOR TENDER
17	2018.06.27	JH	ISSUED FOR TENDER
18	2018.06.27	JH	ISSUED FOR TENDER
19	2018.06.27	JH	ISSUED FOR TENDER
20	2018.06.27	JH	ISSUED FOR TENDER
21	2018.06.27	JH	ISSUED FOR TENDER
22	2018.06.27	JH	ISSUED FOR TENDER
23	2018.06.27	JH	ISSUED FOR TENDER
24	2018.06.27	JH	ISSUED FOR TENDER
25	2018.06.27	JH	ISSUED FOR TENDER
26	2018.06.27	JH	ISSUED FOR TENDER
27	2018.06.27	JH	ISSUED FOR TENDER
28	2018.06.27	JH	ISSUED FOR TENDER
29	2018.06.27	JH	ISSUED FOR TENDER
30	2018.06.27	JH	ISSUED FOR TENDER



Client/Project
DREAM

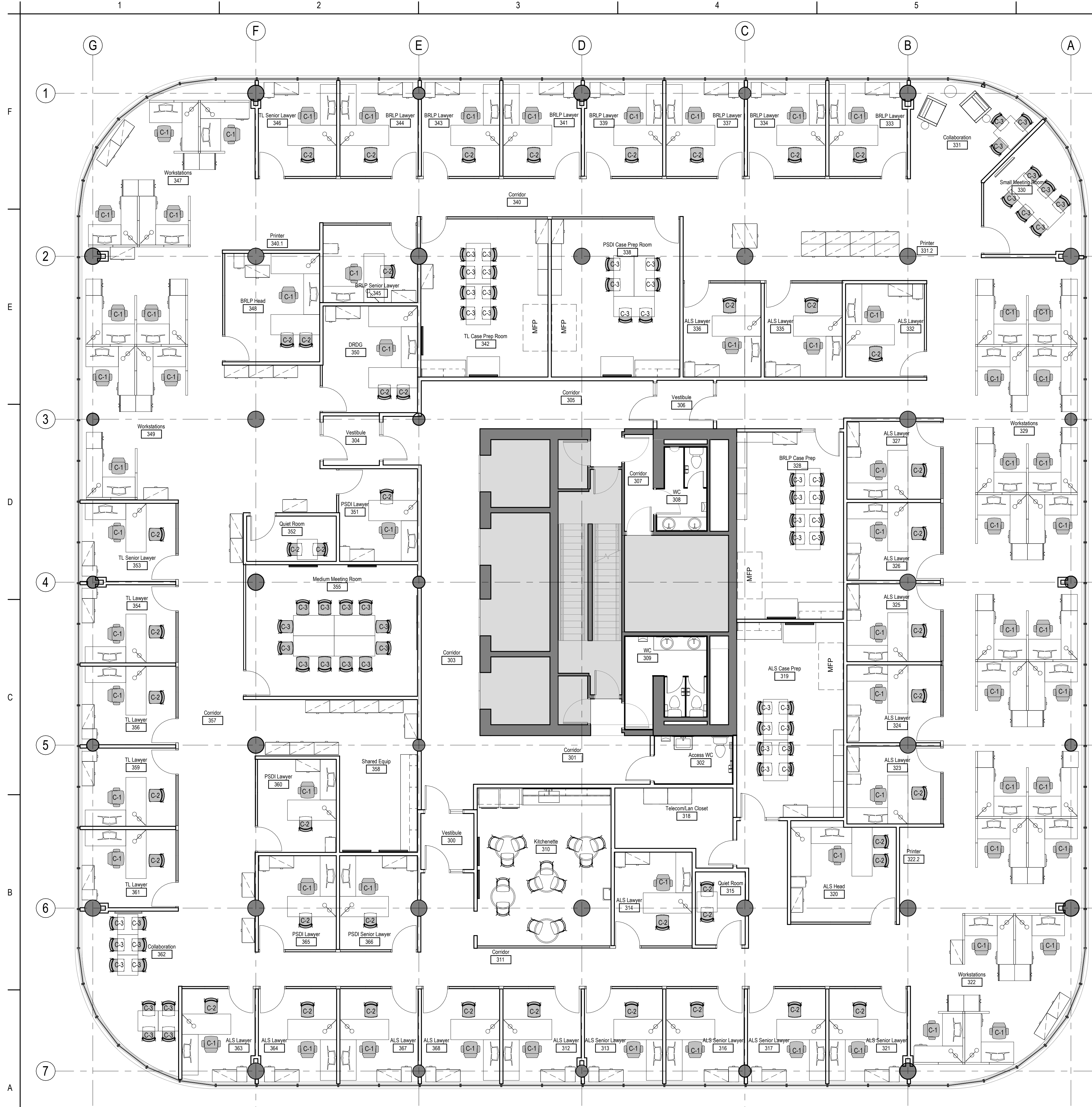
OGD RENOVATIONS
SASKATOON SQUARE
410 22nd Street East
Saskatoon, SK

Project No.: 144401558
File Name: N/A
Scale: As indicated

Author	Designer	Checker
Dwn.	Dign.	Chkd.
YYYYMMDD		

Title
FURNITURE TENDER
LEVEL 4
CATEGORY 1 & 2

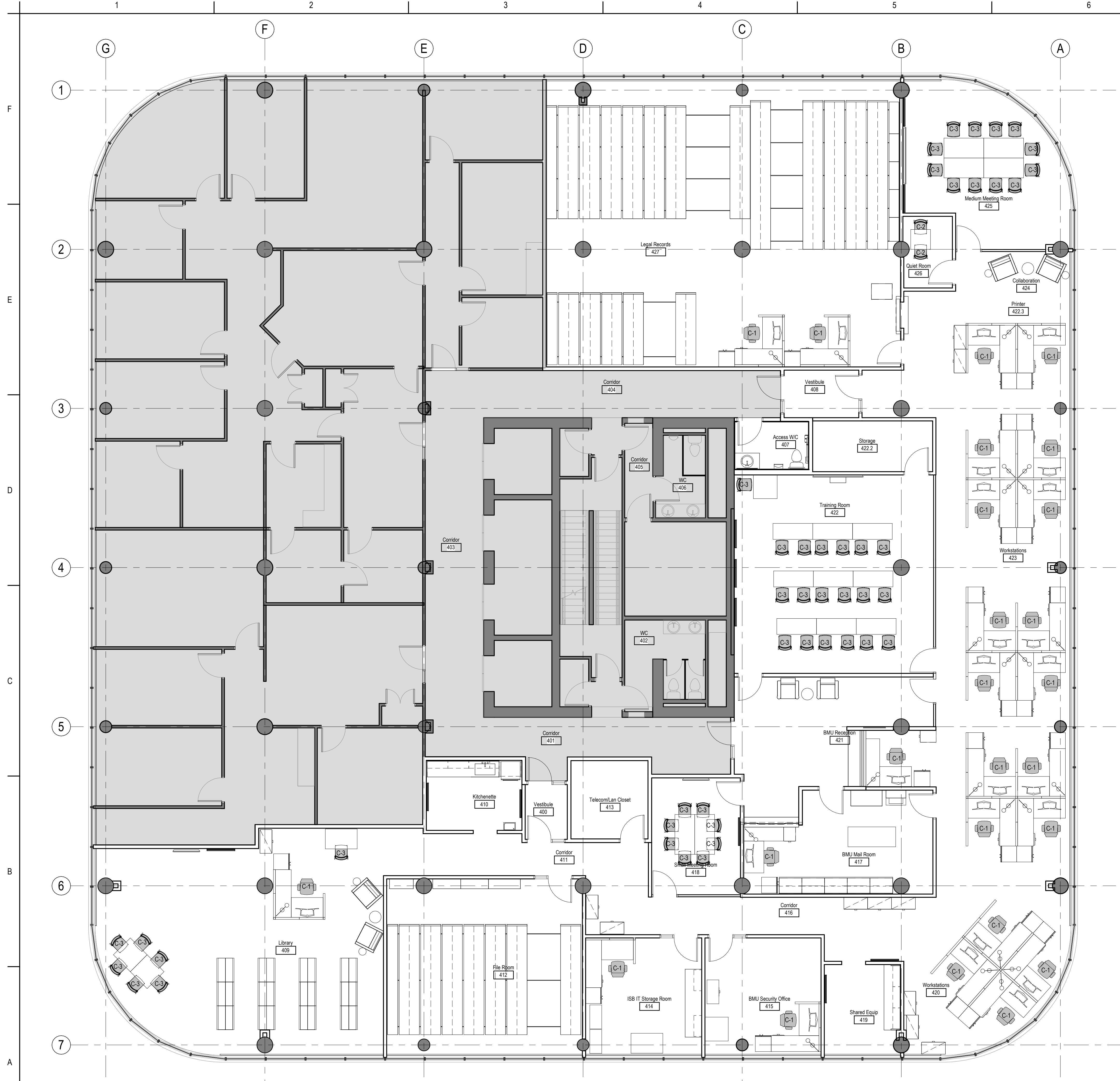
Revision: 2
Drawing No.
F02



LEVEL 3 GENERAL ROTARY SEATING					
QTY	CODE	GOCUID	ITEM #	ITEM DESCRIPTION	CATEGORY
68	C-1			Task Chair: Type: Rotary Office Chair, Stream: General, Headrest: Not included, Back rest Height: High OR Standard back, Lumbar support: Adjustable, Arm rests: height/width/swivel adjustable "T" arms, Seat depth: adjustable, Seat and backrest locks: Lockable or stoppable in multiple positions, Tilt mechanism: Concurrently, Upholstery: Dual breathable, Green Chair Recognition: Yes	RS
46	C-2			Type: Side Chair, Stream: General, Four legs, With arms, Stackable, Dual fabric, Green chair recognition.	RS
61	C-3			Task Chair: Type: Rotary Office Chair, Stream: General, Headrest: Not included, Back rest Height: Standard/mid back, Lumbar support: Fixed, Armrests: Fixed "T" arm, Seat depth: Medium fixed, Seat and backrest locks: Lockable & stoppable in multiple positions, Tilt mechanism: Concurrently, Upholstery: Back breathable & fabric seat, Green Chair Recognition: Yes.	RS

Issue/Revision	By	Date





LEVEL 4 - GENERAL ROTARY SEATING					
QTY	CODE	GOOUID	ITEM #	ITEM DESCRIPTION	CATEGORY
25	C-1			Task Chair, Type: Rotary Office Chair, Stream: General, Headrest: Not included, Back rest Height: High OR Standard back, Lumbar support: Adjustable, Arm rests: height/width/level adjustable "T" arms, Seat depth: adjustable, Seat and backrest locks, Lockable or stoppable in multiple positions. Tilt mechanism: Concurrently, Upholstery: Dual breathable, Green Chair Recognition: Yes.	RS
2	C-2			Type: Side Chair, Stream: General, Four legs, With arms, Stackable, Dual fabric, Green chair recognition.	RS
46	C-3			Task Chair, Type: Rotary Office Chair, Stream: General, Headrest: Not included, Back rest Height: Standard/mid back, Lumbar support: Fixed, Armrests: Fixed "T" arm, Seat depth: Medium fixed, Seat and backrest locks: Lockable & stoppable in multi positions, Tilt mechanism: Concurrently, Upholstery: Back breathable & fabric seat, Green Chair Recognition: Yes.	RS

1 FURNITURE TENDER - LEVEL 4 - GENERAL ROTARY SEATING
 F06 1:75

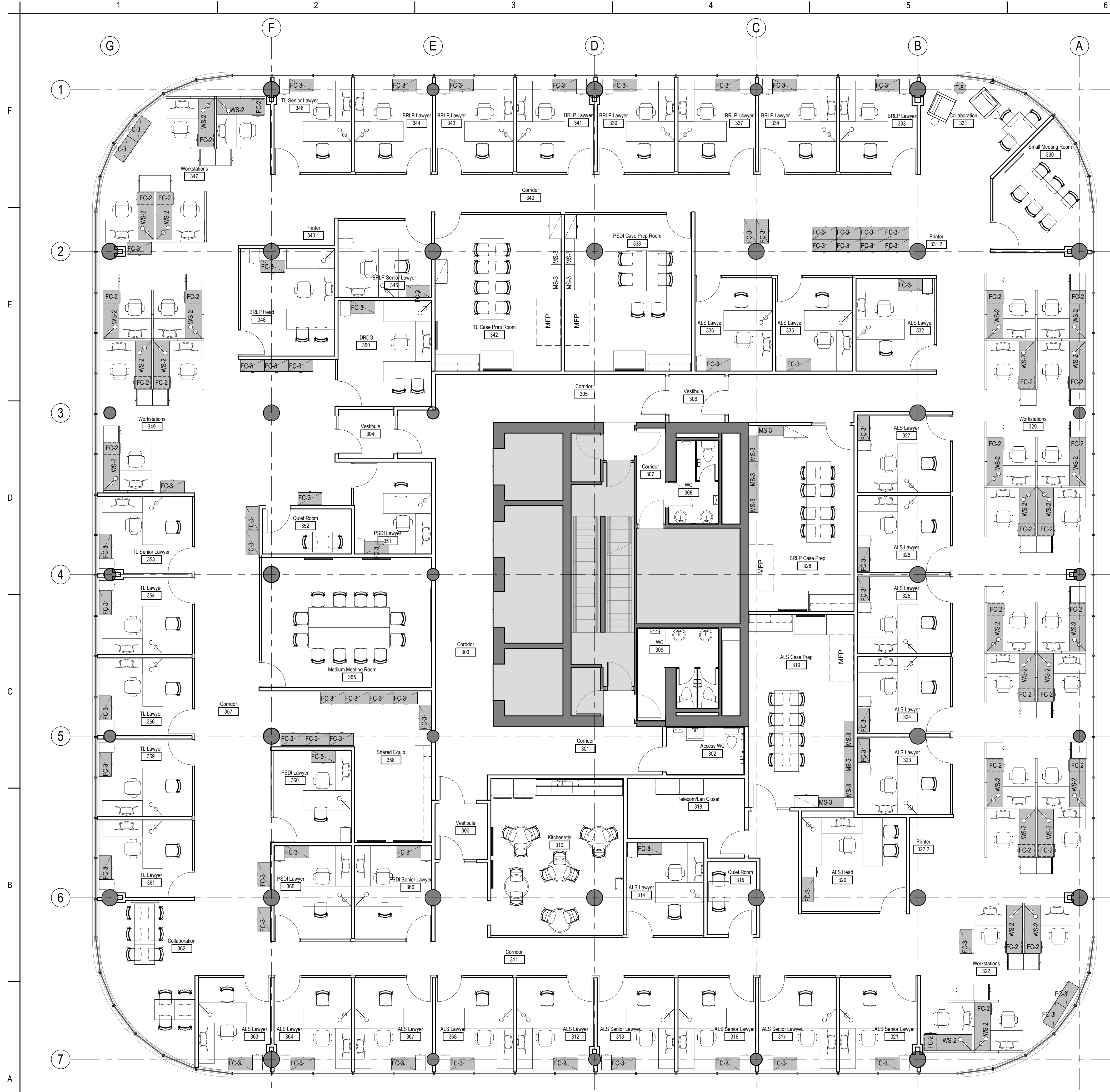
Stantec Architecture Ltd.
 100-25 24th Street East
 Saskatoon, SK, S7K 0K3
 Tel: (306) 667-2400 • www.stantec.com

The Contractor shall verify and be responsible for all dimensions, DO NOT scale the drawing. The Contractor shall verify and be responsible for all dimensions, DO NOT scale the drawing. The Contractor shall verify and be responsible for all dimensions, DO NOT scale the drawing.

Consultant	BY: <u> </u> DATE: <u> </u>
Permit/Seal	BY: <u> </u> DATE: <u> </u>

FINALIZED FURNITURE TENDER DOCUMENTS
 1, 2018

Client/Project DREAM	OGD RENOVATIONS SASKATOON SQUARE	410 22nd Street East Saskatoon, SK
Project No.: 144401558		
File Name: N/A		
Scale: 1 : 75		
Author	Designer	Checker
Dwn.	Dsgn.	Chkd.
YYYYMMDD		
Title		
FURNITURE TENDER		
LEVEL 4 - GENERAL		
ROTARY SEATING		
Revision: 1		
Drawing No.		
F06		



LEVEL 3 - NON-NSMA					
QTY	CODE	GOUCID	ITEM #	ITEM DESCRIPTION	CATEGORY
29	FC-2			Secure dial combination file cabinet. 18"wx24"dx27"h. Metal.	STANDING OFFER
72	FC-3			Secure dial combination fire cabinet. 36"wx18"dx4"high. Metal.	STANDING OFFER
12	MS-3			15"dx36"wx5"high. Metal.	NSMA
1	T-8			18" dia. Coffee table/side table. Drum style. Walnut veneer.	NSMA
29	WS-2			Freestanding workstation. Laminate. PVC Edge. 4 post leg or T-base. 24"dx72"w. Sitting height.	NSMA

FURNITURE IN CONTRACT



1 FURNITURE TENDER - LEVEL 3 - NON-NSMA (See Specifications)

F07 1:75

Stantec Architecture Ltd.
100-75 24th Street East
Saskatoon, SK S7K 0K3
Tel: (306) 467-2400 • www.stantec.com

Consultant

NO.	DATE	BY	APP'D	REVISION

ISSUED FOR PERMITS/SEALS

Permit/Seal

FINALIZED FURNITURE TENDER DOCUMENTS

11, 2018

Client/Project
DREAM

Project No.: 144401558
File Name: N/A
Scale: As indicated

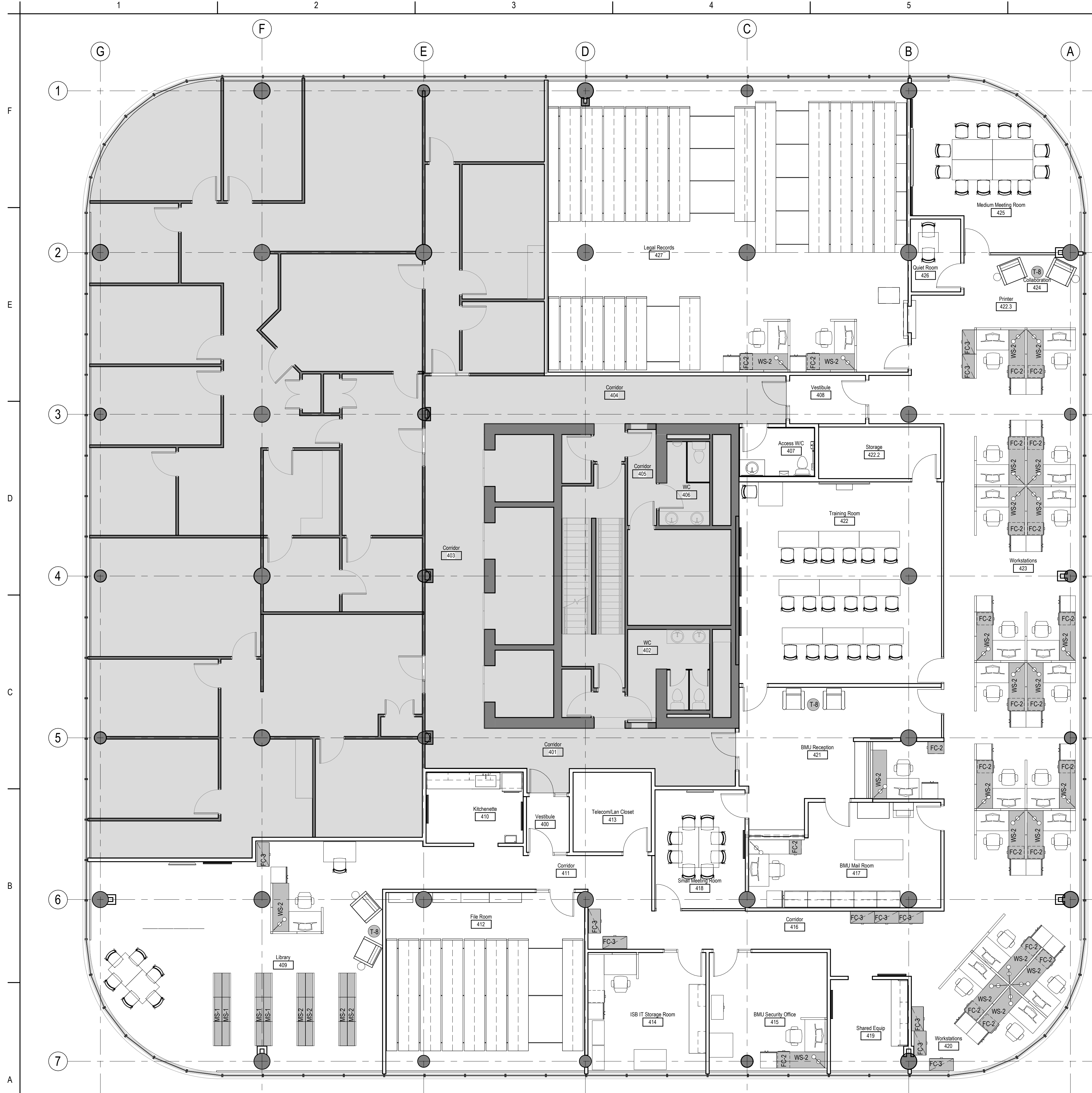
Author: [Blank] Designer: [Blank] Checker: [Blank]
Dwn: [Blank] Dsgn: [Blank] Chk: YYYYMMDD

Title
FURNITURE TENDER - LEVEL 3 - NON-NSMA (See Specifications)

Revision: 1
Drawing No.
F07

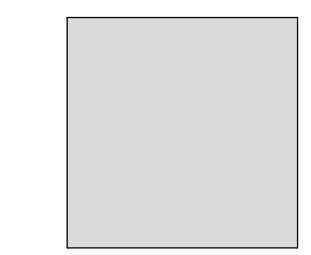
OGD RENOVATIONS
SASKATOON SQUARE
410 22nd Street East
Saskatoon, SK

01/14/2018 12:06:06 PM
ORIGINAL SHEET - ARCH D



LEVEL 4 - NON-NSMA					
QTY	CODE	GOUCID	ITEM #	ITEM DESCRIPTION	CATEGORY
23	FC-2			Secure dial combination file cabinet. 18"x24"x27". Metal.	STANDING OFFER
11	FC-3			Secure dial combination fire cabinet. 36"x18"x4"high. Metal.	STANDING OFFER
4	MS-1			Metal open shelving. 5 high. 13"x36"w. 3 units back to back.	NSMA
4	MS-2			Metal open shelving. 3 high. 13"x36"w. 3 units back to back.	NSMA
3	T-8			18" dia. Coffee table/side table. Drum style. Walnut veneer.	NSMA
23	WS-2			Freestanding worksurface. Laminate. PVC Edge. 4 post leg or T-base. 24"x72"w. Sitting height.	NSMA

FURNITURE IN CONTRACT



FURNITURE IN CONTRACT

1 FURNITURE TENDER - LEVEL 4 - NON-NSMA (See Specifications)
F08 1:75

Consultant

NO.	DATE	BY	REVISION
1	2018.06.27	JMM	11/1/18/18/20
2	2018.06.27	JMM	11/1/18/18/20
3	2018.06.27	JMM	11/1/18/18/20
4	2018.06.27	JMM	11/1/18/18/20
5	2018.06.27	JMM	11/1/18/18/20
6	2018.06.27	JMM	11/1/18/18/20
7	2018.06.27	JMM	11/1/18/18/20
8	2018.06.27	JMM	11/1/18/18/20
9	2018.06.27	JMM	11/1/18/18/20
10	2018.06.27	JMM	11/1/18/18/20
11	2018.06.27	JMM	11/1/18/18/20
12	2018.06.27	JMM	11/1/18/18/20
13	2018.06.27	JMM	11/1/18/18/20
14	2018.06.27	JMM	11/1/18/18/20
15	2018.06.27	JMM	11/1/18/18/20
16	2018.06.27	JMM	11/1/18/18/20
17	2018.06.27	JMM	11/1/18/18/20
18	2018.06.27	JMM	11/1/18/18/20
19	2018.06.27	JMM	11/1/18/18/20
20	2018.06.27	JMM	11/1/18/18/20
21	2018.06.27	JMM	11/1/18/18/20
22	2018.06.27	JMM	11/1/18/18/20
23	2018.06.27	JMM	11/1/18/18/20
24	2018.06.27	JMM	11/1/18/18/20
25	2018.06.27	JMM	11/1/18/18/20
26	2018.06.27	JMM	11/1/18/18/20
27	2018.06.27	JMM	11/1/18/18/20
28	2018.06.27	JMM	11/1/18/18/20
29	2018.06.27	JMM	11/1/18/18/20
30	2018.06.27	JMM	11/1/18/18/20

Permit/Seal

FINALIZED FURNITURE TENDER DOCUMENTS
1, 2018