

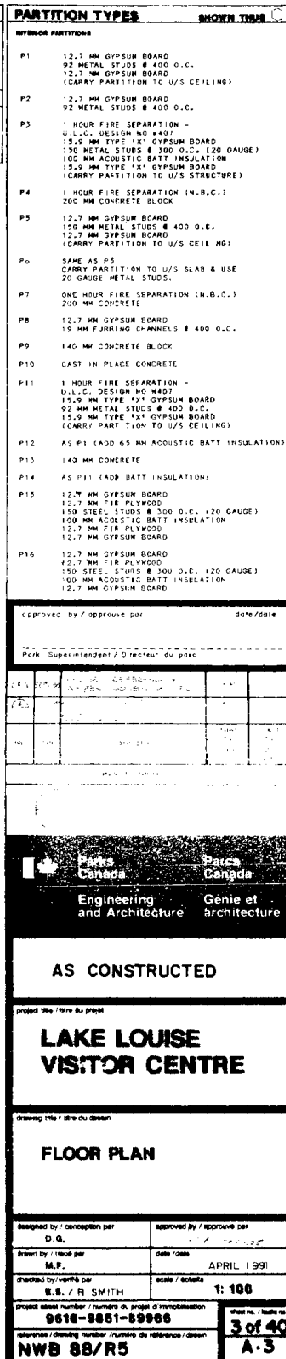
## DRAWING LIST

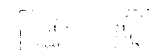
## ELECTRICAL

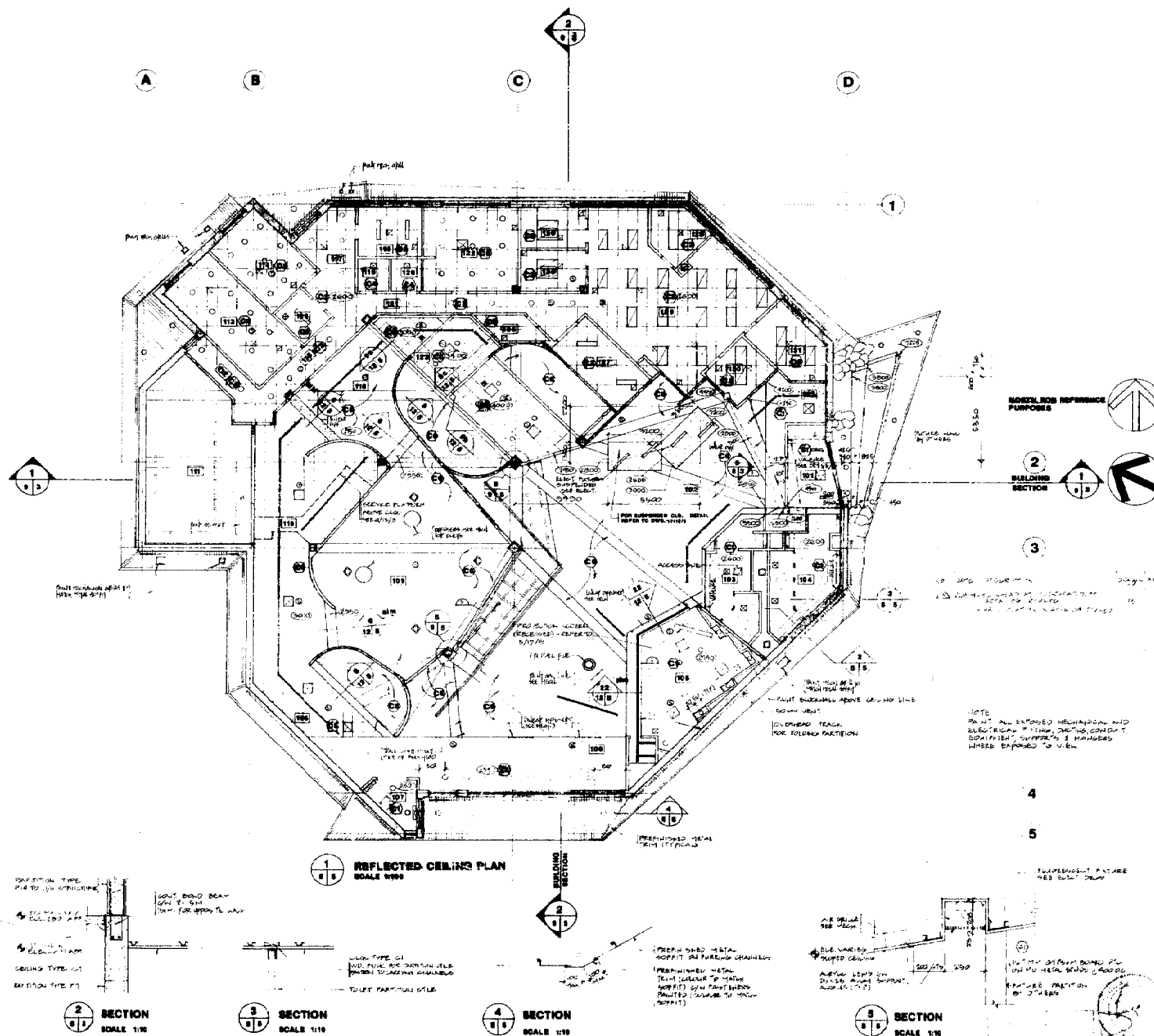
DWG. No.	SYMBOLS LIST
35 of 40 E.1	ONE LINE AND SCHEMATICS
36 of 40 E.2	SITE PLAN
37 of 40 E.3	POWER LAYOUT
38 of 40 E.4	LIGHTING LAYOUT
39 of 40 E.5	DETAILS
40 of 40 E.6	

<span style="float: right;">88.4.15</span>					
A	4/5 OF CONSTRUCTION				
NO	REV	DATE	BY	CHKD	APPD
<b>Parks Canada</b>		<b>Parks Canada</b> <b>Genie et architecture</b>			
Engineering and Architecture		Genie et architecture			
<h1 style="margin: 0;">AS CONSTRUCTED</h1>					
project title / titre du projet <h2 style="margin: 0;">LAKE LOUISE VISITOR CENTRE</h2>					
<h1 style="margin: 0;">COVER SHEET</h1>					
drawing title / titre du dessin					
designed by / conception par			approved by / approuvé par		
drawn by / tracé par			date / date		
checked by / vérifié par <b>R SMITH</b>			scale / échelle <b>N.T.S.</b>		
project name / nom du projet et numéro du projet <b>88-0618-00000</b>					
reference / numéro / numéro de référence / dossier <b>NWB 88/R5</b>					
sheet no. / feuille no. <b>1 of 4</b>					





1 of 1

**LEGEND**

ACOUSTIC TILES	
TEXTURED PLASTER ON GYPSUM BOARD	
GYPSUM BOARD PAINTED	
RECESSED FLUORESCENT FIXTURE	
SURFACE MOUNTED FLUORESCENT FIXTURE	
TRACK LIGHTING	
RECESSED MOT. LIGHT	
SURFACE MOUNTED EMERGENCY FIXTURE	
SURFACE MOUNTED LIGHT FIXTURE	
RECESSED SPEAKER	
MECHANICAL DIFFUSER GRILLE	
MECHANICAL RETURN AIR GRILLE	
MECHANICAL DIFFUSER GRILLE	
ACCESS PANEL	
CEILING TYPE	
CEILING HEIGHT	

**CEILING TYPES**

TYPE	DESCRIPTION
C1	12.7 MM GYPSUM BOARD OR SUSPENDED METAL FLOORING & CARRYING CHANNELS
C2	2 LAYERS 15.9 MM TYPE 121 GYPSUM BOARD ON SUSPENDED METAL FLOORING & CARRYING CHANNELS
C3	600 X 1200 SUSPENDED 1" BAR WITH ACOUSTIC LAY-IN PANELS
C4	SAME AS C3
C5	600 X 600 SUSPENDED 1" BAR WITH ACOUSTIC LAY-IN PANELS
C6	EXPOSED CONCRETE STRUCTURAL SLAB AND REINFORCING BARS

1	2	3	4	5
6	7	8	9	10
11	12	13	14	15
16	17	18	19	20

21	22	23	24	25
26	27	28	29	30
31	32	33	34	35
36	37	38	39	40

41	42	43	44	45
46	47	48	49	50
51	52	53	54	55
56	57	58	59	60

61	62	63	64	65
66	67	68	69	70
71	72	73	74	75
76	77	78	79	80

81	82	83	84	85
86	87	88	89	90
91	92	93	94	95
96	97	98	99	100

101	102	103	104	105
106	107	108	109	110
111	112	113	114	115
116	117	118	119	120

121	122	123	124	125
126	127	128	129	130
131	132	133	134	135
136	137	138	139	140

141	142	143	144	145
146	147	148	149	150
151	152	153	154	155
156	157	158	159	160

161	162	163	164	165
166	167	168	169	170
171	172	173	174	175
176	177	178	179	180

181	182	183	184	185
186	187	188	189	190
191	192	193	194	195
196	197	198	199	200

201	202	203	204	205
206	207	208	209	210
211	212	213	214	215
216	217	218	219	220

221	222	223	224	225
226	227	228	229	230
231	232	233	234	235
236	237	238	239	240

241	242	243	244	245
246	247	248	249	250
251	252	253	254	255
256	257	258	259	260

261	262	263	264	265
266	267	268	269	270
271	272	273	274	275
276	277	278	279	280

281	282	283	284	285
286	287	288	289	290
291	292	293	294	295
296	297	298	299	300

301	302	303	304	305
306	307	308	309	310
311	312	313	314	315
316	317	318	319	320

321	322	323	324	325
326	327	328	329	330
331	332	333	334	335
336	337	338	339	340

341	342	343	344	345
346	347	348	349	350
351	352	353	354	355
356	357	358	359	360

361	362	363	364	365
366	367	368	369	370
371	372	373	374	375
376	377	378	379	380

381	382	383	384	385
386	387	388	389	390
391	392	393	394	395
396	397	398	399	400

401	402	403	404	405
406	407	408	409	410
411	412	413	414	415
416	417	418	419	420

421	422	423	424	425
426	427	428	429	430
431	432	433	434	435
436	437	438	439	440

441	442	443	444	445
446	447	448	449	450
451	452	453	454	455
456	457	458	459	460

461	462	463	464	465
466	467	468	469	470
471	472	473	474	475
476	477	478	479	480

481	482	483	484	485
486	487	488	489	490
491	492	493	494	495
496	497	498	499	500

501	502	503	504	505
506	507	508	509	510
511	512	513	514	515
516	517	518	519	520

521	522	523	524	525
526	527	528	529	530
531	532	533	534	535
536	537	538	539	540

541	542	543	544	545
546	547	548	549	550
551	552	553	554	555
556	557	558	559	560

561	562	563	564	565
566	567	568	569	570
571	572	573	574	575
576	577	578	579	580

581	582	583	584	585
586	587	588	589	590
591	592	593	594	595
596	597	598	599	600

601	602	603	604	605
606	607	608	609	610
611	612	613	614	615
616	617	618	619	620

621	622	623	624	625
626	627	628	629	630
631	632	633	634	635
636	637	638	639	640

641	642	643	644	645
646	647	648	649	650
651	652	653	654	655
656	657	658	659	660

661	662	663	664	665
666	667	668	669	670
671	672	673	674	675
676	677	678	679	680

681	682	683	684	685
686	687	688	689	690
691	692	693	694	695
696	697	698	699	700

701	702	703	704	705
706	707	708	709	710
711	712	713	714	715
716	717	718	719	720

721	722	723	724	725
726	727	728	729	730
731	732	733	734	735
736	737	738	739	740

741	742	743	744	745
746	747	748	749	750
751	752	753	754	755
756	757	758	759	760

761	762	763	764	765
766	767	768	769	770
771	772	773	774	775
776	777	778	779	780

781	782	783	784	785
786	787	788	789	790
791	792	793	794	795
796	797	798	799	800

801	802	803	804	805
806	807	808	809	810
811	812	813	814	815
816	817	818	819	820

821	822	823	824	825
826	827	828	829	830
831	832	833	834	835
836	837	838	839	840

841	842	843	844	845
846	847	848	849	850
851	852	853	854	855
856	857	858	859	860

861	862	863	864	865
866	867	868	869	870
871	872	873	874	875
876	877	878	879	880

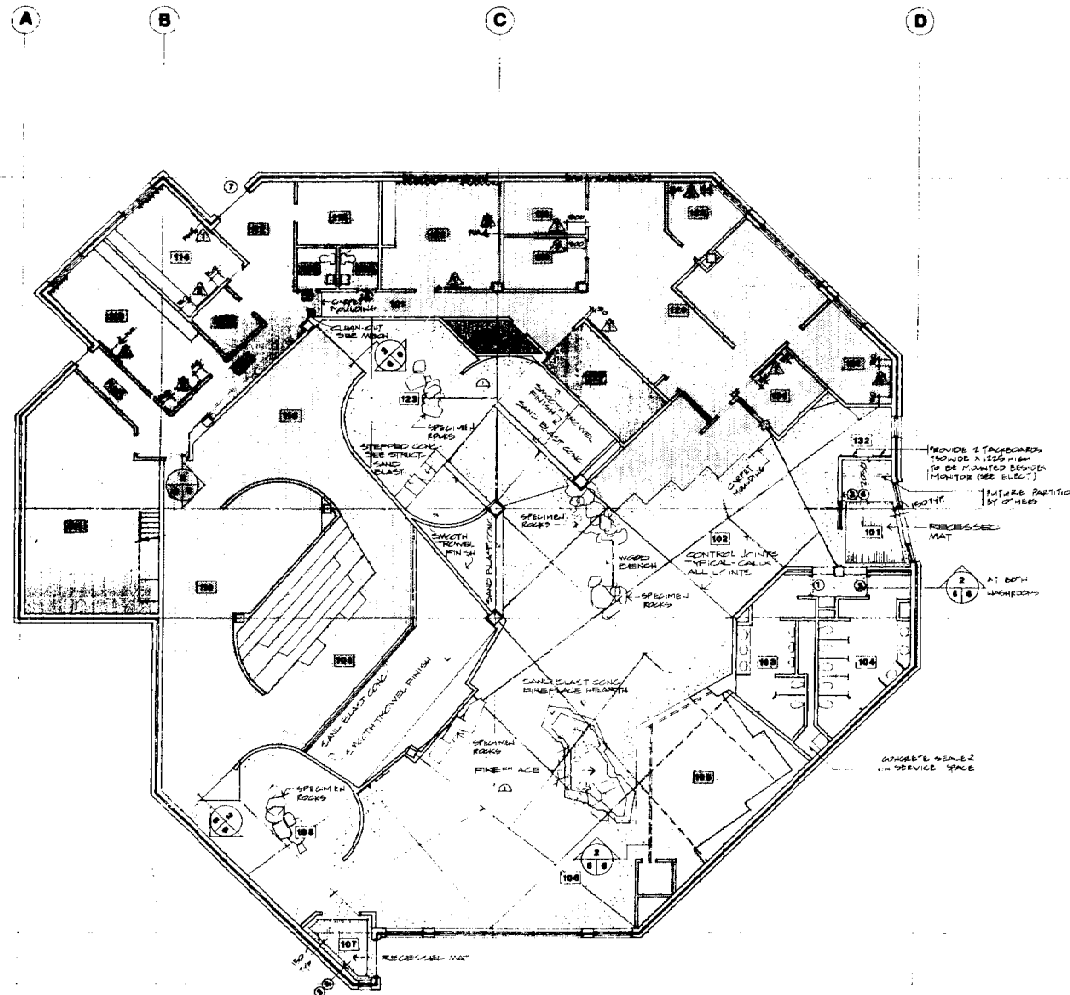
881	882	883	884	885
886	887	888	889	890
891	892	893	894	895
896	897	898	899	900

901	902	903	904	905
906	907	908	909	910
911	912	913	914	915
916	917	918	919	920

921	922	923	924	925
926	927	928	929	930
931	932	933	934	935
936	937	938	939	940

941	942	943	944	945
946	947	948	949	950
951	952	953	954	955
956	957	958	959	960

961	962	963	964	965
966	967	968	969	970
971	97			



**FLOOR FINISHES DETAIL**  
SCALE 1:100



**FLOOR TRANSITION DETAIL**  
SCALE 1:1

# LEGEND

- CARPET
- COLORFUL HARDWARE AND SEALER
- EXPOSED AGGREGATE CONCRETE C/W SEALER
- FINISHED PORCELAIN T.S.S.
- SMOOTH TROWEL CONCRETE FINISH UNLESS NOTED OTHERWISE

NOTE:  
1. SPECIMEN ROOMS TO BE SUPPLIED TO 5" BY OWNER AND INSTALLED BY GENERAL CONTRACTOR. SET SPECIMEN ROOMS TO HORTAL BED.  
2. SEE MECHANICAL FOR FLOOR DRAIN LOCATIONS.

## KEY NOTES:

ACCESSORIES LIST INDICATED THIS

BACKBOARD (1530 WIDE X 1225 HIGH)

WHITEBOARD (1530 WIDE X 1225 HIGH)

TYPICAL MOUNTING BOARD HEIGHT: 900MM ABOVE FLOOR FINISH

BLINDS

CURTAINS (CENTRE PARTITION)

## SIGN LEGEND

SHOWN THIS

1. SIGN TYPE

2. SIGN TYPE 2

3. SIGN TYPE 3

4. SIGN TYPE 4

5. SIGN TYPE 5

6. SIGN TYPE 6

7. SIGN TYPE 7

8. SIGN TYPE 8

9. SIGN TYPE 9

10. SIGN TYPE 10

11. SIGN TYPE 11

12. SIGN TYPE 12

13. SIGN TYPE 13

14. SIGN TYPE 14

15. SIGN TYPE 15

16. SIGN TYPE 16

17. SIGN TYPE 17

18. SIGN TYPE 18

19. SIGN TYPE 19

20. SIGN TYPE 20

21. SIGN TYPE 21

22. SIGN TYPE 22

23. SIGN TYPE 23

24. SIGN TYPE 24

25. SIGN TYPE 25

26. SIGN TYPE 26

27. SIGN TYPE 27

28. SIGN TYPE 28

29. SIGN TYPE 29

30. SIGN TYPE 30

31. SIGN TYPE 31

32. SIGN TYPE 32

33. SIGN TYPE 33

34. SIGN TYPE 34

35. SIGN TYPE 35

36. SIGN TYPE 36

37. SIGN TYPE 37

38. SIGN TYPE 38

39. SIGN TYPE 39

40. SIGN TYPE 40

41. SIGN TYPE 41

42. SIGN TYPE 42

43. SIGN TYPE 43

44. SIGN TYPE 44

45. SIGN TYPE 45

46. SIGN TYPE 46

47. SIGN TYPE 47

48. SIGN TYPE 48

49. SIGN TYPE 49

50. SIGN TYPE 50

51. SIGN TYPE 51

52. SIGN TYPE 52

53. SIGN TYPE 53

54. SIGN TYPE 54

55. SIGN TYPE 55

56. SIGN TYPE 56

57. SIGN TYPE 57

58. SIGN TYPE 58

59. SIGN TYPE 59

60. SIGN TYPE 60

61. SIGN TYPE 61

62. SIGN TYPE 62

63. SIGN TYPE 63

64. SIGN TYPE 64

65. SIGN TYPE 65

66. SIGN TYPE 66

67. SIGN TYPE 67

68. SIGN TYPE 68

69. SIGN TYPE 69

70. SIGN TYPE 70

71. SIGN TYPE 71

72. SIGN TYPE 72

73. SIGN TYPE 73

74. SIGN TYPE 74

75. SIGN TYPE 75

76. SIGN TYPE 76

77. SIGN TYPE 77

78. SIGN TYPE 78

79. SIGN TYPE 79

80. SIGN TYPE 80

81. SIGN TYPE 81

82. SIGN TYPE 82

83. SIGN TYPE 83

84. SIGN TYPE 84

85. SIGN TYPE 85

86. SIGN TYPE 86

87. SIGN TYPE 87

88. SIGN TYPE 88

89. SIGN TYPE 89

90. SIGN TYPE 90

91. SIGN TYPE 91

92. SIGN TYPE 92

93. SIGN TYPE 93

94. SIGN TYPE 94

95. SIGN TYPE 95

96. SIGN TYPE 96

97. SIGN TYPE 97

98. SIGN TYPE 98

99. SIGN TYPE 99

100. SIGN TYPE 100

101. SIGN TYPE 101

102. SIGN TYPE 102

103. SIGN TYPE 103

104. SIGN TYPE 104

105. SIGN TYPE 105

106. SIGN TYPE 106

107. SIGN TYPE 107

108. SIGN TYPE 108

109. SIGN TYPE 109

110. SIGN TYPE 110

111. SIGN TYPE 111

112. SIGN TYPE 112

113. SIGN TYPE 113

114. SIGN TYPE 114

115. SIGN TYPE 115

116. SIGN TYPE 116

117. SIGN TYPE 117

118. SIGN TYPE 118

119. SIGN TYPE 119

120. SIGN TYPE 120

121. SIGN TYPE 121

122. SIGN TYPE 122

123. SIGN TYPE 123

124. SIGN TYPE 124

125. SIGN TYPE 125

126. SIGN TYPE 126

127. SIGN TYPE 127

128. SIGN TYPE 128

129. SIGN TYPE 129

130. SIGN TYPE 130

131. SIGN TYPE 131

132. SIGN TYPE 132

133. SIGN TYPE 133

134. SIGN TYPE 134

135. SIGN TYPE 135

136. SIGN TYPE 136

137. SIGN TYPE 137

138. SIGN TYPE 138

139. SIGN TYPE 139

140. SIGN TYPE 140

141. SIGN TYPE 141

142. SIGN TYPE 142

143. SIGN TYPE 143

144. SIGN TYPE 144

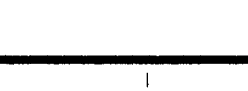
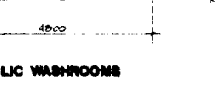
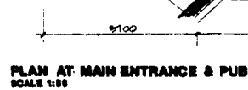
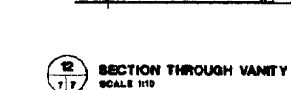
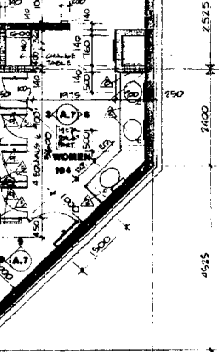
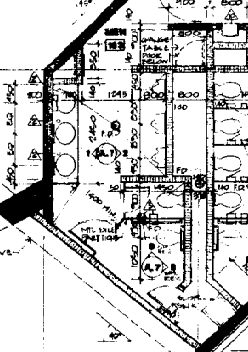
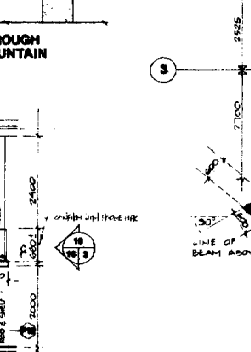
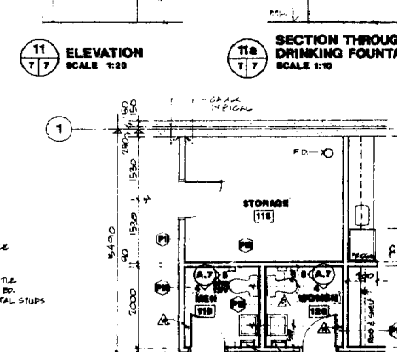
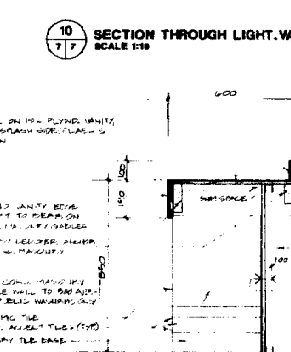
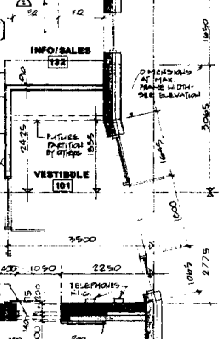
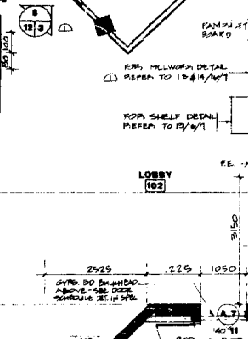
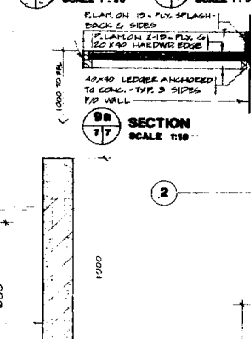
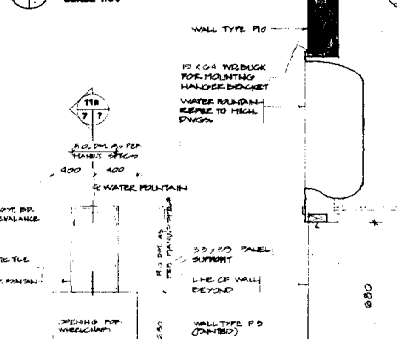
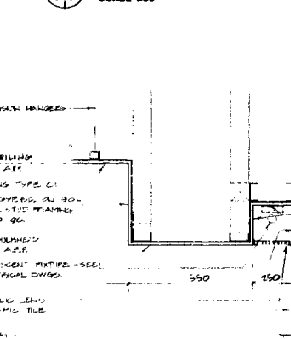
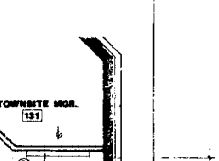
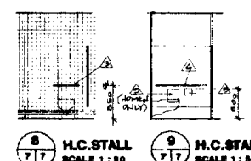
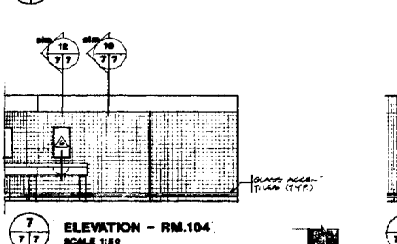
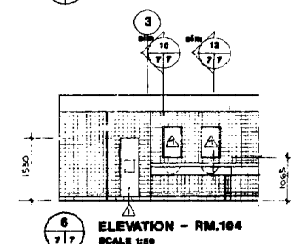
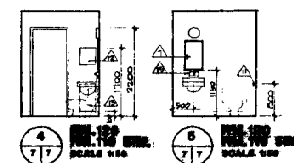
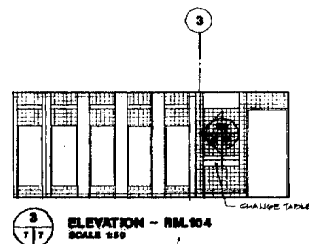
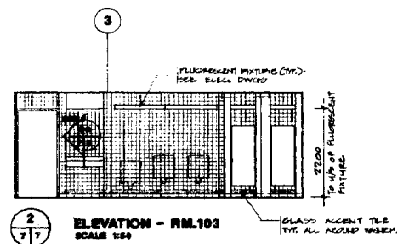
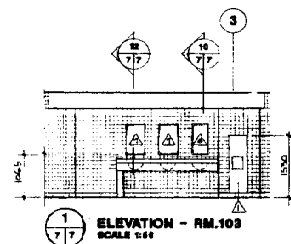
145. SIGN TYPE 145

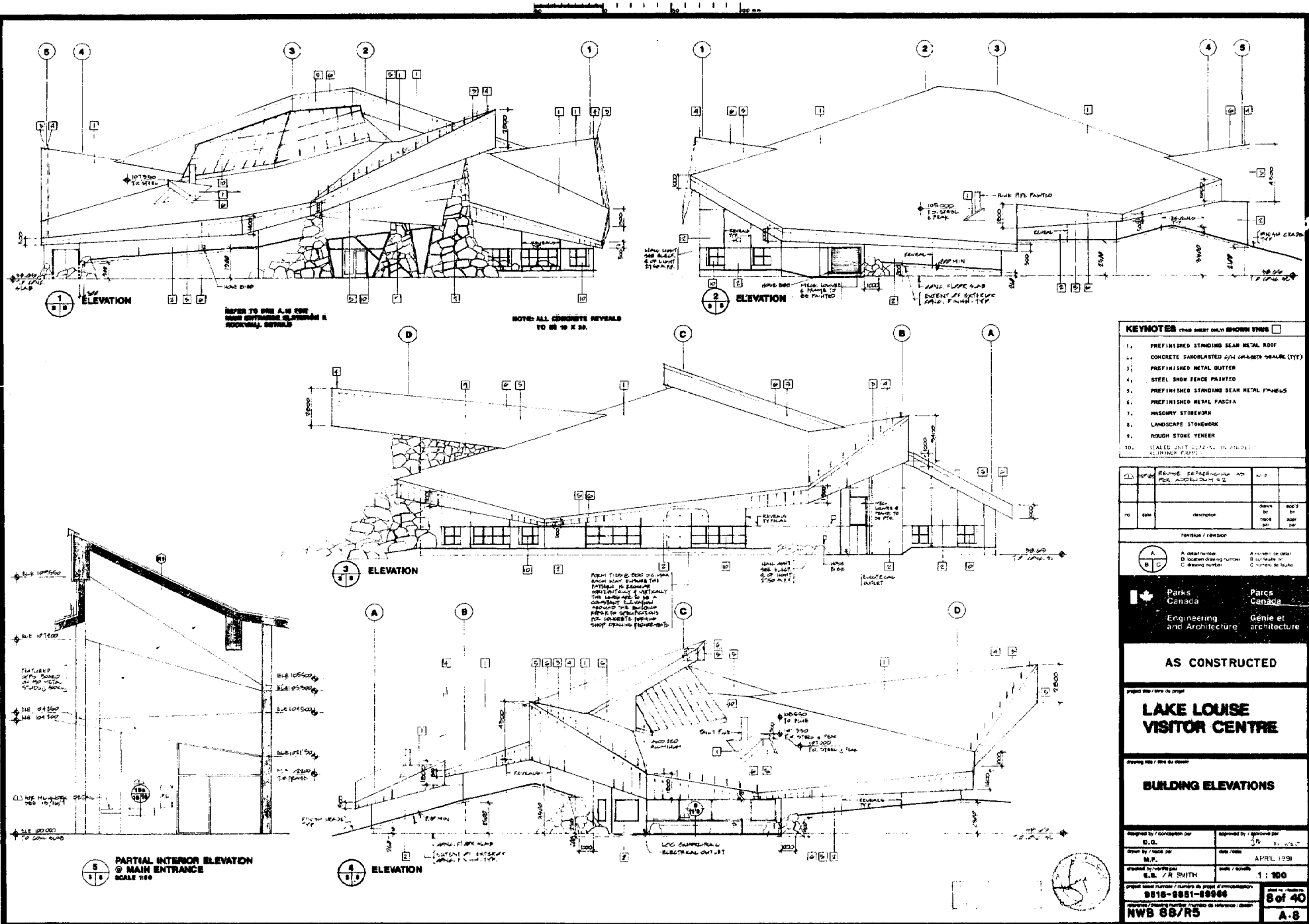
146. SIGN TYPE 146

</

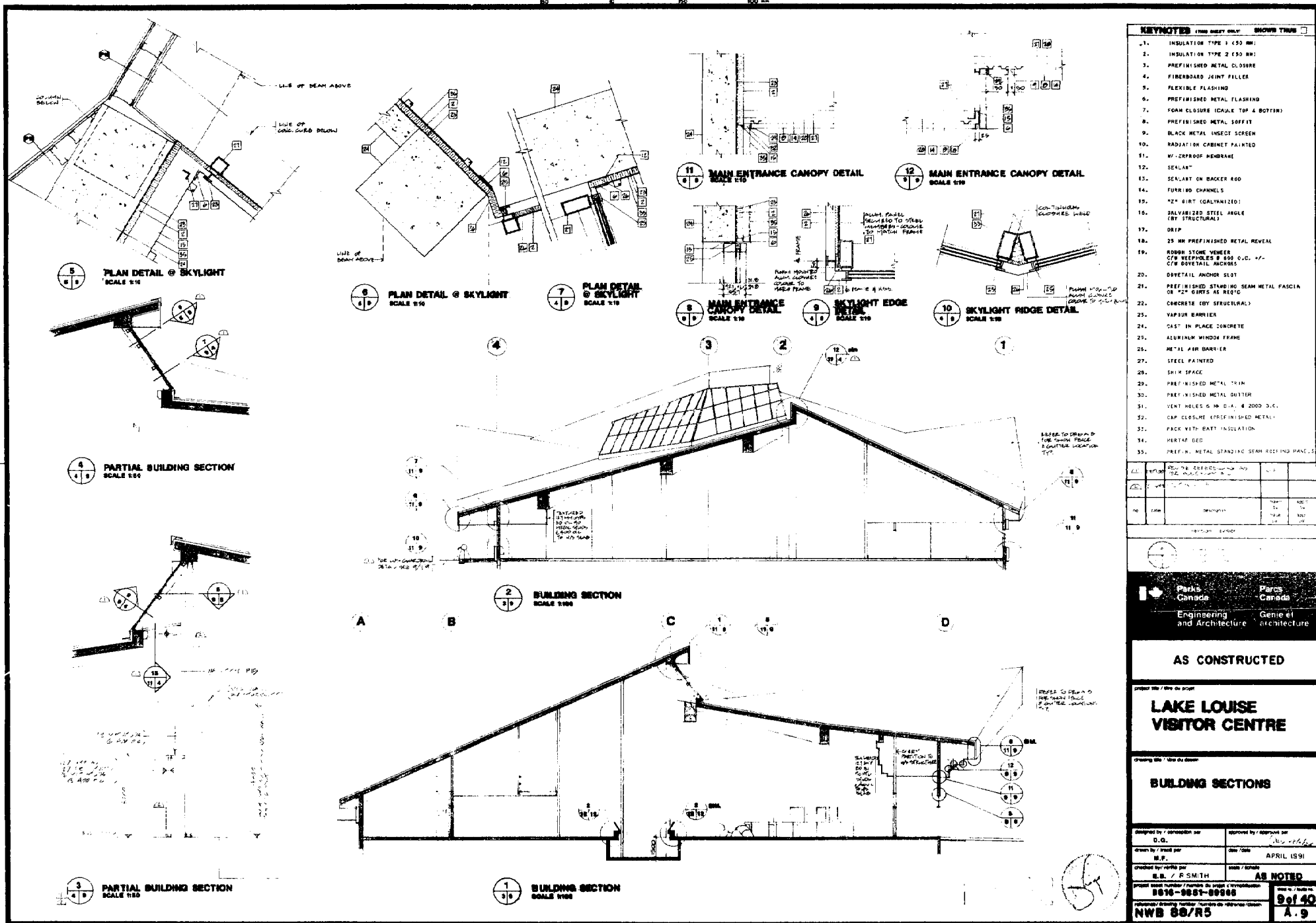
100' 0" 100' 0" 100' 0"

WASHROOM ACCESSORIES	
1	PAPER TOWEL DISPENSER AND WASTE RECEPTACLE
2	SOAP DISPENSER
3	GRAB BAR 600 LONG
4	GRAB BAR 1200 LONG
5	WET-CELL TOILET TISSUE DISPENSER
6	TILT MIRROR (400 X 762 MM)
7	MIRROR (457 X 762 MM)
8	FEMININE NAPKIN - TAMPON VENDOR
9	FEMININE NAPKIN DISPOSAL
10	DRINKING FOUNTAIN
11	TOILET PAPER HOLDER
12	PAPER TOWEL DISPENSER
13	SURFACE MOUNTED WASTE RECEPTACLE
14	COAT HOOK
15	WALL MOUNTED SOAP DISPENSER









Parks Canada  
Engineering and Architecture

Parks Canada  
Genie et architecture

AS CONSTRUCTED

LAKE LOUISE  
VISITOR CENTRE

BUILDING SECTIONS

Designed by / conception par  
D.C.

Approved by / approuvé par  
APRIL 1991

Drawn by / dessiné par  
M.P.

Checked by / vérifié par  
R.E. / R.S.M.

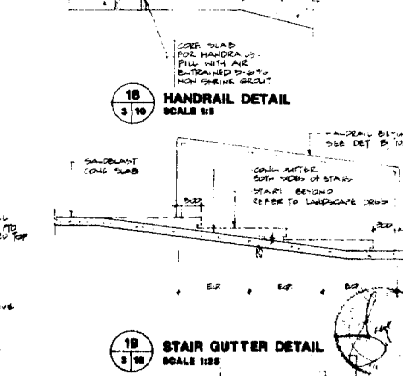
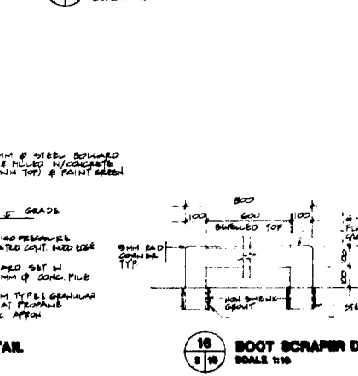
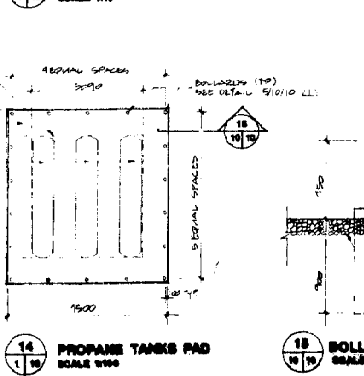
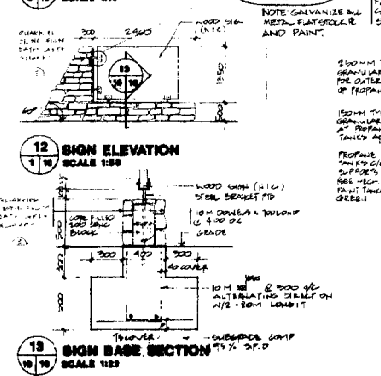
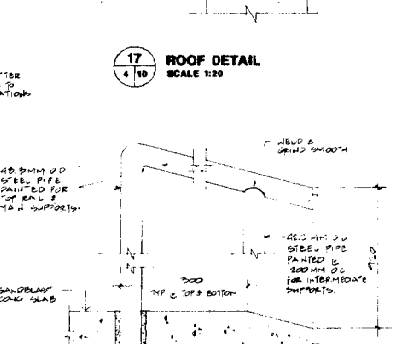
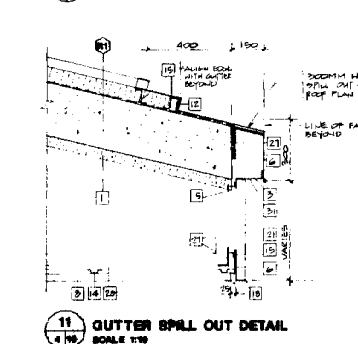
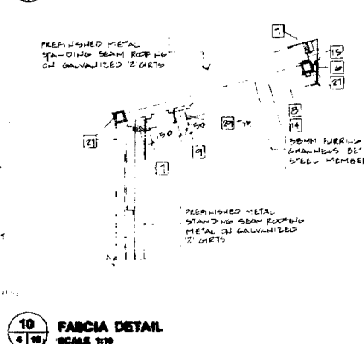
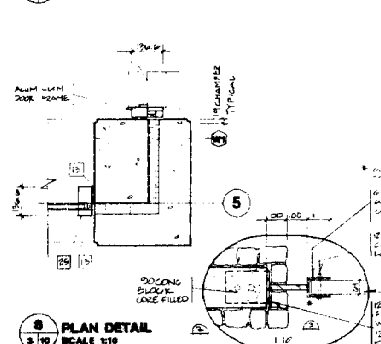
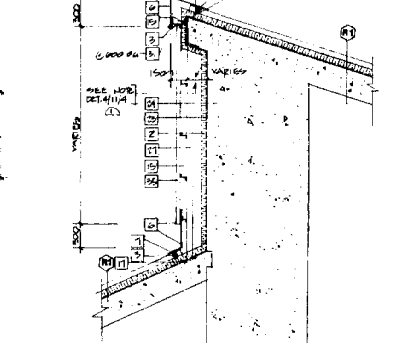
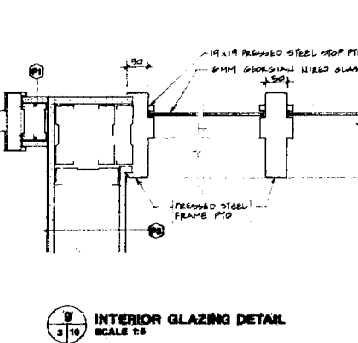
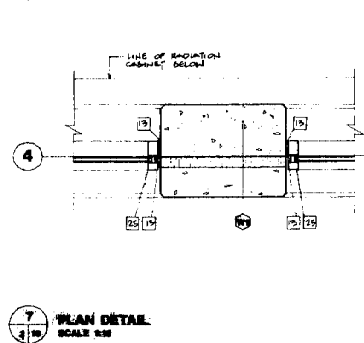
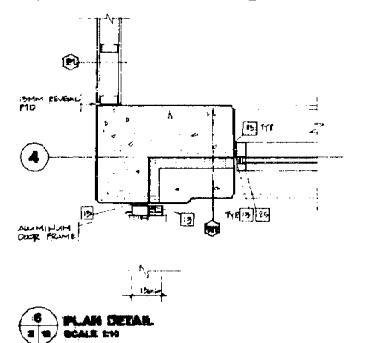
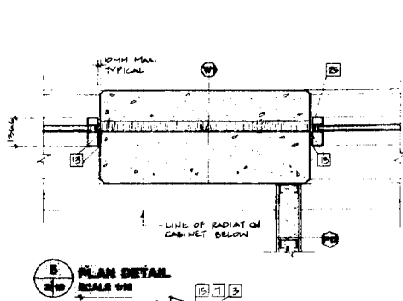
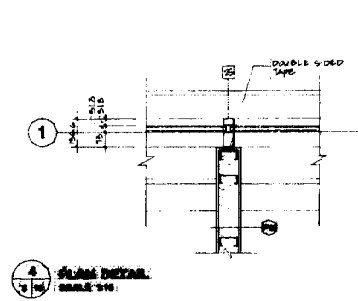
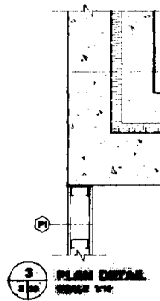
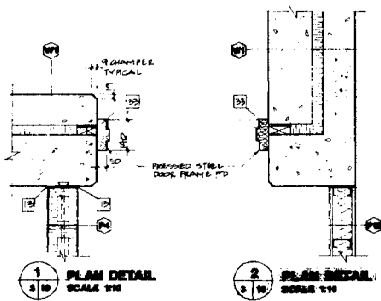
Scale / échelle  
AS NOTED

Project number / numéro du projet & reproduction  
8816-881-8816

Author / auteur  
NWB 88/R5

Page 9 of 40  
A.9

50 100 150 200



KEYNOTES	1994 SHED ONLY	SHOWN THERE
1. INSULATION TYPE 1 (50 MM)		
2. INSULATION TYPE 2 (50 MM)		
3. PREFINISHED METAL CLOSURE		
4. FIBERBOARD JOINT FILLER		
5. FLEXIBLE FLASHING		
6. PREFINISHED METAL FLASHING		
7. FOAM CLOSURE (CAULK TOP & BOTTOM)		
8. PREFINISHED METAL SOFFIT		
9. BLACK METAL INSECT SCREEN		
10. RADIATION CABINET PAINTED		
11. WATERPROOF MEMBRANE		
12. SEALANT		
13. SEALANT ON BACKER ROD		
14. FURRING CHANNELS		
15. 1/2" GIRT		
16. GALVANIZED STEEL ANGLE (BY STRUCTURAL)		
17. DRIP		
18. 25 MM PREFINISHED METAL REVEAL		
19. ROUGH STONE VENEER		
20. C/W NAILS & ROD O.C. +/-		
21. C/W DOVETAIL ANCHORS		
22. DOVETAIL ANCHOR SLOT		
23. PREFINISHED STANDING SEAM METAL FASCIA ON 1/2" GIRTS AS REQ'D		
24. CONCRETE (BY STRUCTURAL)		
25. VAPOUR BARRIER		
26. CAST IN PLACE CONCRETE		
27. ALUMINUM WINDOW FRAME		
28. METAL AIR BARRIER		
29. STEEL, PAINTED		
30. SHIM SPACE		
31. PREFINISHED METAL TRIM		
32. PREFINISHED METAL BUTTER		
33. VENT HOLES 6 MM DIA. @ 2000 O.C.		
34. CAP CLOSURE (PREFINISHED METAL)		
35. PACK WITH BATT INSULATION		
36. METAL BEC		
37. PREFIN. METAL STANDING SEAM ROOFING PANELS		

(1)	(2)	(3)	(4)	(5)	(6)	(7)	(8)	(9)	(10)	(11)	(12)	(13)	(14)	(15)	(16)	(17)	(18)	(19)	(20)	(21)	(22)	(23)	(24)	(25)	(26)	(27)	(28)	(29)	(30)	(31)	(32)	(33)	(34)	(35)	(36)	(37)	(38)	(39)	(40)	(41)	(42)	(43)	(44)	(45)	(46)	(47)	(48)	(49)	(50)	(51)	(52)	(53)	(54)	(55)	(56)	(57)	(58)	(59)	(60)	(61)	(62)	(63)	(64)	(65)	(66)	(67)	(68)	(69)	(70)	(71)	(72)	(73)	(74)	(75)	(76)	(77)	(78)	(79)	(80)	(81)	(82)	(83)	(84)	(85)	(86)	(87)	(88)	(89)	(90)	(91)	(92)	(93)	(94)	(95)	(96)	(97)	(98)	(99)	(100)
-----	-----	-----	-----	-----	-----	-----	-----	-----	------	------	------	------	------	------	------	------	------	------	------	------	------	------	------	------	------	------	------	------	------	------	------	------	------	------	------	------	------	------	------	------	------	------	------	------	------	------	------	------	------	------	------	------	------	------	------	------	------	------	------	------	------	------	------	------	------	------	------	------	------	------	------	------	------	------	------	------	------	------	------	------	------	------	------	------	------	------	------	------	------	------	------	------	------	------	------	------	------	------	-------

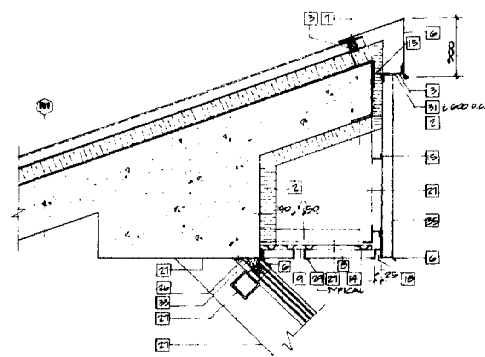
1	2	3	4	5	6	7	8	9	10	11	12	13	14	15	16	17	18	19	20	21	22	23	24	25	26	27	28	29	30	31	32	33	34	35	36	37	38	39	40	41	42	43	44	45	46	47	48	49	50	51	52	53	54	55	56	57	58	59	60	61	62	63	64	65	66	67	68	69	70	71	72	73	74	75	76	77	78	79	80	81	82	83	84	85	86	87	88	89	90	91	92	93	94	95	96	97	98	99	100
---	---	---	---	---	---	---	---	---	----	----	----	----	----	----	----	----	----	----	----	----	----	----	----	----	----	----	----	----	----	----	----	----	----	----	----	----	----	----	----	----	----	----	----	----	----	----	----	----	----	----	----	----	----	----	----	----	----	----	----	----	----	----	----	----	----	----	----	----	----	----	----	----	----	----	----	----	----	----	----	----	----	----	----	----	----	----	----	----	----	----	----	----	----	----	----	----	----	----	-----

1	2	3	4	5	6	7	8	9	10	11	12	13	14	15	16	17	18	19	20	21	22	23	24	25	26	27	28	29	30	31	32	33	34	35	36	37	38	39	40	41	42	43	44	45	46	47	48	49	50	51	52	53	54	55	56	57	58	59	60	61	62	63	64	65	66	67	68	69	70	71	72	73	74	75	76	77	78	79	80	81	82	83	84	85	86	87	88	89	90	91	92	93	94	95	96	97	98	99	100
---	---	---	---	---	---	---	---	---	----	----	----	----	----	----	----	----	----	----	----	----	----	----	----	----	----	----	----	----	----	----	----	----	----	----	----	----	----	----	----	----	----	----	----	----	----	----	----	----	----	----	----	----	----	----	----	----	----	----	----	----	----	----	----	----	----	----	----	----	----	----	----	----	----	----	----	----	----	----	----	----	----	----	----	----	----	----	----	----	----	----	----	----	----	----	----	----	----	----	-----

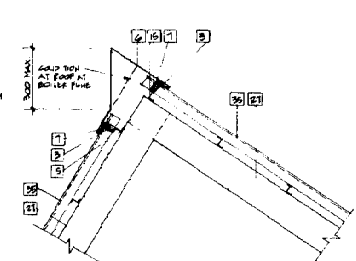
1	2	3	4	5	6	7	8	9	10	11	12	13	14	15	16	17	18	19	20	21	22	23	24	25	26	27	28	29	30	31	32	33	34	35	36	37	38	39	40	41	42	43	44	45	46	47	48	49	50	51	52	53	54	55	56	57	58	59	60	61	62	63	64	65	66	67	68	69	70	71	72	73	74	75	76	77	78	79	80	81	82	83	84	85	86	87	88	89	90	91	92	93	94	95	96	97	98	99	100
---	---	---	---	---	---	---	---	---	----	----	----	----	----	----	----	----	----	----	----	----	----	----	----	----	----	----	----	----	----	----	----	----	----	----	----	----	----	----	----	----	----	----	----	----	----	----	----	----	----	----	----	----	----	----	----	----	----	----	----	----	----	----	----	----	----	----	----	----	----	----	----	----	----	----	----	----	----	----	----	----	----	----	----	----	----	----	----	----	----	----	----	----	----	----	----	----	----	----	-----

1	2	3	4	5	6	7	8	9	10	11	12	13	14	15	16	17	18	19	20	21	22	23	24	25	26	27	28	29	30	31	32	33	34	35	36	37	38	39	40	41	42	43	44	45	46	47	48	49	50	51	52	53	54	55	56	57	58	59	60	61	62	63	64	65	66	67	68	69	70	71	72	73	74	75	76	77	78	79	80	81	82	83	84	85	86	87	88	89	90	91	92	93	94	95	96	97	98	99	100
---	---	---	---	---	---	---	---	---	----	----	----	----	----	----	----	----	----	----	----	----	----	----	----	----	----	----	----	----	----	----	----	----	----	----	----	----	----	----	----	----	----	----	----	----	----	----	----	----	----	----	----	----	----	----	----	----	----	----	----	----	----	----	----	----	----	----	----	----	----	----	----	----	----	----	----	----	----	----	----	----	----	----	----	----	----	----	----	----	----	----	----	----	----	----	----	----	----	----	-----

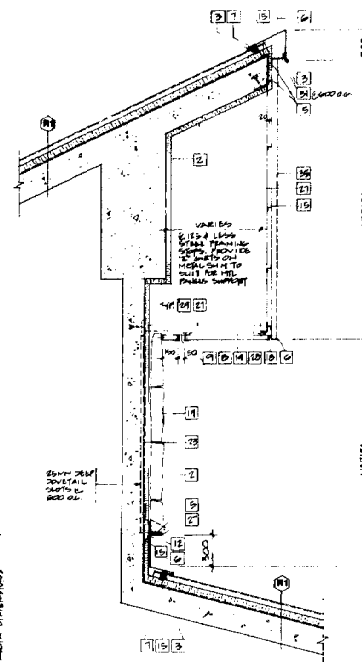
1	2	3	4	5	6	7	8	9	10	11	12	13	14	15	16	17	18	19	20	21	22	23	24	25	26	27	28	29	30	31	32	33	34	35	36	37	38	39	40	41	42	43	44	45	46	47	48	49	50	51	52	53	54	55	56	57	58	59	60	61	62	63	64	65	66	67	68	69	70	71	72	73	74	75	76	77	78	79	80	81	82	83	84	85	86	87	88	89	90	91	92	93	94	95	96	97	98	99	100
---	---	---	---	---	---	---	---	---	----	----	----	----	----	----	----	----	----	----	----	----	----	----	----	----	----	----	----	----	----	----	----	----	----	----	----	----	----	----	----	----	----	----	----	----	----	----	----	----	----	----	----	----	----	----	----	----	----	----	----	----	----	----	----	----	----	----	----	----	----	----	----	----	----	----	----	----	----	----	----	----	----	----	----	----	----	----	----	----	----	----	----	----	----	----	----	----	----	----	-----



2 TILTED ROOF AT CHIMNEY FLUE  
SCALE 1/10

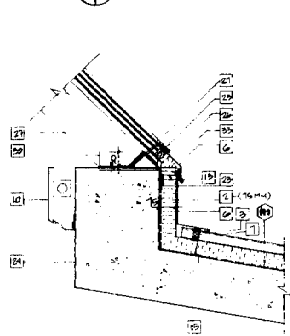


3 RIDGE AT TILTED ROOF AT CHIMNEY FLUE  
SCALE 1/10

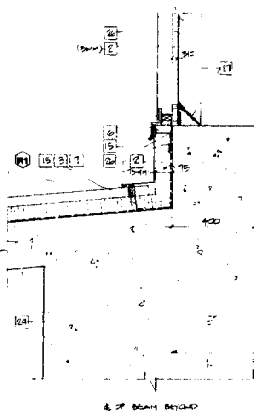


4 ROOF/ROCK WALL DETAIL  
SCALE 1/10

1 SKYLIGHT HEAD DETAIL  
SCALE 1/10

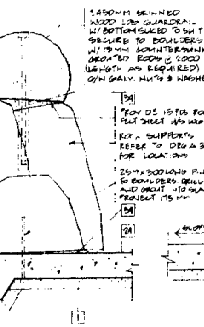


5 SKYLIGHT SILL DETAIL  
SCALE 1/10

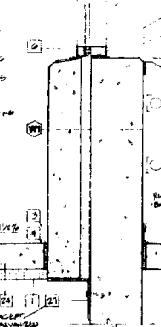


13 SKYLIGHT SILL DETAIL  
EDGE CONDITION  
SCALE 1/10

6 ROOF EDGE DETAIL  
SCALE 1/10

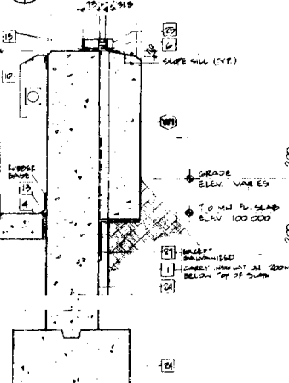


7 HEAD AT VIEWING DECK  
SCALE 1/10



10 SILL AT VIEWING DECK  
SCALE 1/10

8 HEAD AT ADMINISTRATION AREA  
SCALE 1/10



11 SILL AT ADMINISTRATION AREA  
SCALE 1/10

12 ROOF/WALL DETAIL  
SCALE 1/10



# KEYNOTES

1. INSULATION TYPE 1 (50 MM)
2. INSULATION TYPE 2 (50 MM)
3. PREFINISHED JOINT CLOSURE
4. FIBREGLASS JOINT FILLER
5. FLEXIBLE FLASHING
6. PREFINISHED METAL FLASHING
7. FOAM CLOSURE (CAULK TOP & BOTTOM)
8. PREFINISHED METAL SOFFIT
9. BLACK METAL INSET SCREEN
10. RADIATION CABINET PAINTED
11. WATERPROOF MEMBRANE
12. SEALANT
13. SEALANT ON BACKER ROD
14. FURRING CHANNELS
15. "Z" GIRT
16. GALVANIZED STEEL ANGLE (KEY STRUCTURAL)
17. CRIP
18. 25 MM PROF. N. SHED METAL REVEAL
19. ROUGH STONE, FINISH C/M WEEPHOLES @ 600 G.C. +/- C/M DOVETAIL ANCHORS
20. DOVETAIL ANCHOR SLOT
21. PREFINISHED STANDING SEAM METAL FASCIA ON "Z" GIRTS AS REQ'D
22. CONCRETE (BY STRUCTURAL)
23. VAPOUR BARRIER
24. CAST IN PLACE CONCRETE
25. ALUMINUM WINDOW FRAME
26. METAL A & B BARRIER
27. STEEL PLATE
28. SHIM SPACE
29. PREFINISHED METAL TRIM
30. PREFINISHED METAL GUTTER
31. VENT HOLES 6 MM DIA. @ 2000 G.C.
32. CAP CLOSURE (PREFINISHED METAL)
33. PACK WITH BATT INSULATION
34. METAL NED
35. PREFINISHED METAL STANDING SEAM ROOFING PANELS

NO.	DATE	DESCRIPTION	BY	CHECKED
1				
2				
3				
4				
5				
6				
7				
8				
9				
10				
11				
12				
13				
14				
15				
16				
17				
18				
19				
20				
21				
22				
23				
24				
25				
26				
27				

Parks Canada  
Engineering and Architecture

## AS CONSTRUCTED

## LAKE LOUISE VISITOR CENTRE

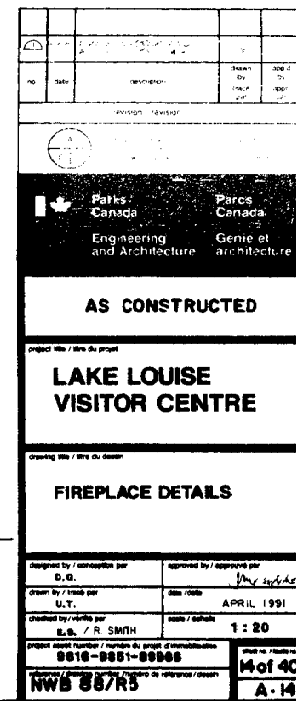
## SECTION DETAILS

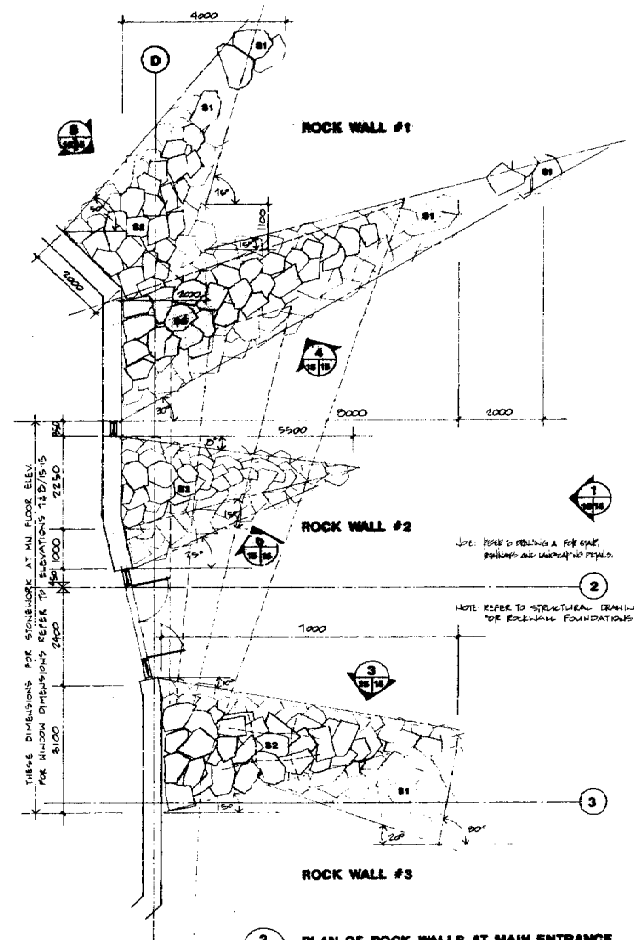
Designed by / conception par D. G.	Approved by / approved par D. G.
Drawn by / dessiné par M.P.	Date / date APPL 1991
Checked by / vérifié par E.S. / R. SMITH	Scale / échelle AS NOTED
Project code / numéro de projet d'investissement 9810-1081-8088	
Project name / nom du projet NWB 88/R5	
Sheet / feuille 1 of 40 A-11	





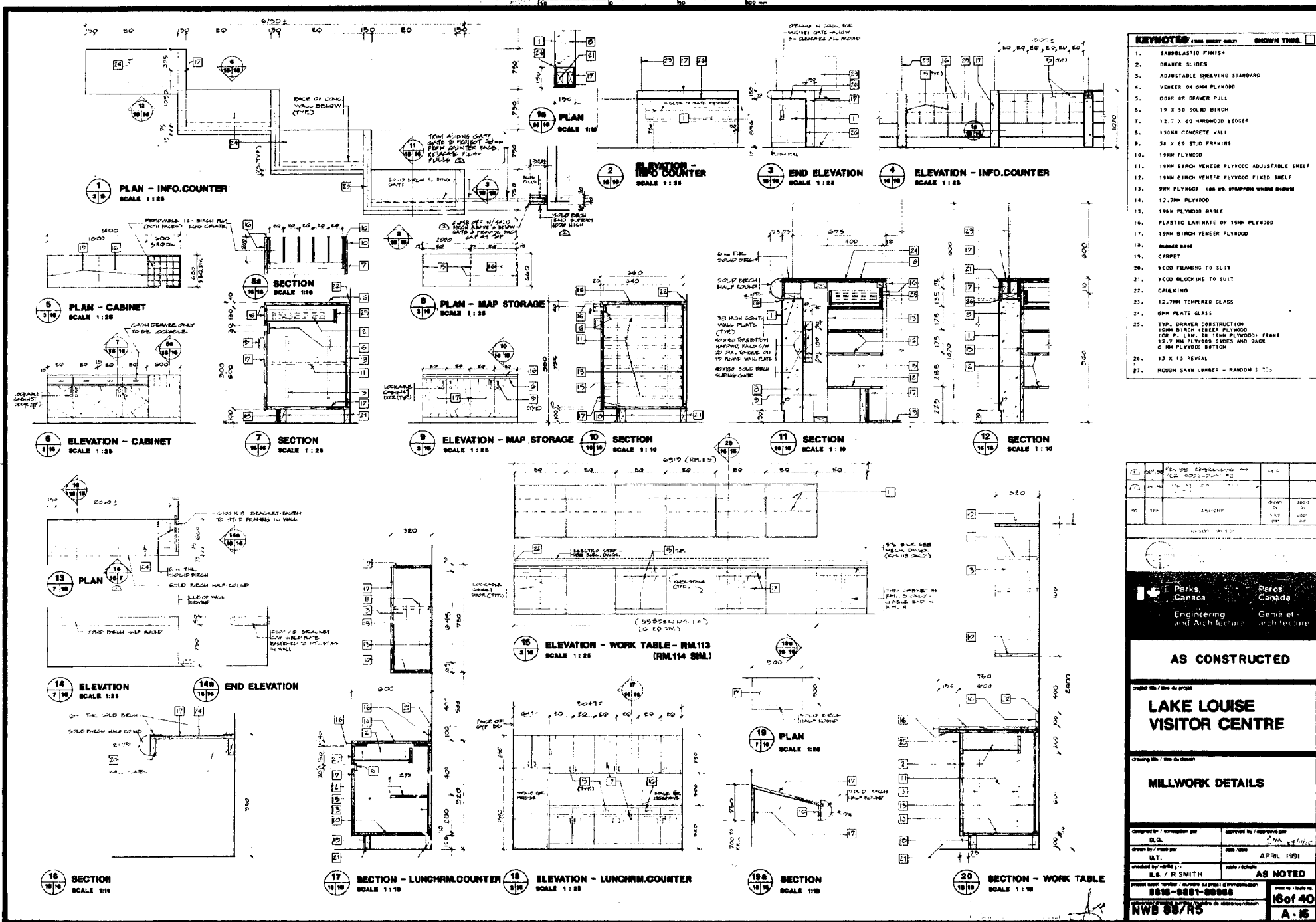
project class number / number du projet si international <b>9510-8851-00200</b>	class no. / num. <b>13 of 4</b>
reference / drawing number / number de référence / dessin <b>NWB 88/R5</b>	<b>A-13</b>





 **SIDE ELEVATION - ROCK WALL #2**  
**SCALE 1/8" = 1'-0"**

<p>projet 1016 / titre du projet</p> <h1>LAKE LOUISE VISITOR CENTRE</h1> <p>drawing 1016 / titre du dessin</p> <h2>ROCK WALL DETAILS</h2>	
<p>designed by / conçu par O.O.</p> <p>drawn by / tracé par M.F.</p> <p>checked by / vérifié par S.B. / R. SMITH</p>	<p>approved by / approuvé par <i>Don McArthur</i></p> <p>date / date APRIL 1991</p> <p>scale / échelle 1:50</p>
<p>project sheet number / numéro de page d'identification <b>0010-9031-00005</b></p> <p>revision / drawing number / numéro de référence / coteur <b>NWB 68/R5</b></p>	
<p>sheet no. / feuille <b>15 of 40</b></p> <p><b>A-5</b></p>	







## DESIGN NOTES

## General

These design notes are for the convenience of reference only and do not replace the contract specifications.

## Detail Loads

Roof:	Live Load (snow plus accumulation in accordance with the Supplement to the B.C. 1985)	0.8 kN/m <sup>2</sup>
	Dead Load (superimposed)	0.8 kN/m <sup>2</sup>
Projection (catalina):	Live Load (superimposed)	2.4 kN/m <sup>2</sup>
	Dead Load (superimposed)	0.43 kN/m <sup>2</sup>
Stairs:	Live Load (superimposed)	4.0 kN/m <sup>2</sup>
	Dead Load (superimposed)	0.8 kN/m <sup>2</sup>

## Foundations

Foundation design is based on the Geotechnical Investigation Report No. 882-156-24 prepared by Curtis Engineering and Testing Ltd. on May 11, 1987, amended by letter dated October 30, 1987.

Ensure that the requirements outlined in this report are read and understood prior to commencing with foundation work.

Allowable bearing pressure for spread footings founded on undisturbed sandy gravel is 385 kN/m<sup>2</sup> with the base compacted to 95% of Standard Proctor maximum dry density.

Working pressures to be verified in writing in the field by a Professional Geotechnical Engineer registered in the Province of Alberta prior to placing concrete.

Do not place concrete against frost-free ground. Place by an approved method that protects excavations from freezing prior to placing concrete.

Provide down to footings, to reach all vertical rebar and wall reinforcement unless detailed otherwise.

Place drains, anchor bolts and inserts for erection of subsequent trades accurately. These are to be checked by the relevant trades prior to placing concrete.

Backfill against basement walls only after the floor to which the wall is tied has been placed and has sufficient strength to resist lateral soil pressures. Waterproofing on walls to be protected from damage by backfilling.

## Cast-in-Place Concrete

Reinforcing for structural slabs and slabs on grade to be supported on approved chairs at 1000 mm maximum spacing. Use brook concrete block covered in water for slabs on grade.

Do not weld reinforcement unless approved in writing by the Engineer. Reinforcement approved for welding to rebar to CSA C22.18-M1971.

## Concrete cover to reinforcement:

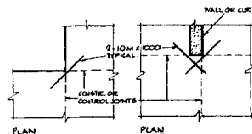
Footings	bottom and sides	75 mm
	top	50 mm
Walls	interior	25 mm
	exterior - exposed	100 mm or more 40 mm greater than 125 mm
Structural Slabs	top	40 mm
	bottom	20 mm
Beams to Stirrups		40 mm
Columns to Ties		40 mm

Supply support bars to support main reinforcement as required.

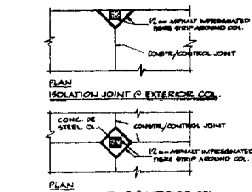
Around all openings in slabs provide two 10M bars each side one each face extending 600 mm past the opening, plus two 10M diagonal bars 2:1 times the length of shortest side of opening or minimum 750 mm, a length at each corner.

Provide horizontal corner bars matching all horizontal wall reinforcement on outside faces at corners, on two faces at intersections.

Corner bar details:

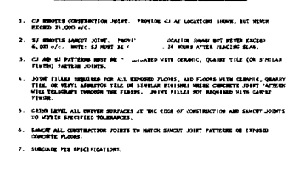
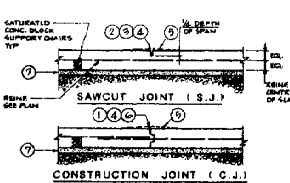


10 TYPICAL SLAB ON GRADE DETAILS



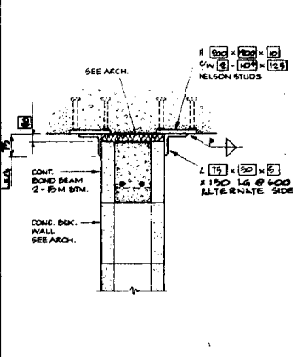
10 TYPICAL SLAB ON GRADE DETAILS

CONCRETE TO BE PLACED IN ALL ISOLATION JOINTS PRIOR TO PLACING SLABS.



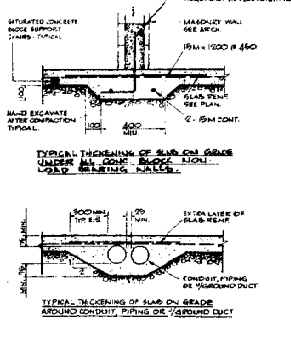
9 TYPICAL SLAB ON GRADE DETAILS

CONCRETE TO BE PLACED IN ALL ISOLATION JOINTS PRIOR TO PLACING SLABS.



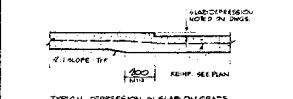
6 LATERAL SUPPORT FOR NON-LOAD BEARING CONC. BLK. WALL

FULL WEIGHT WALLS ONLY



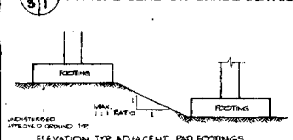
3 TYPICAL SLAB ON GRADE DETAILS

CONCRETE TO BE PLACED IN ALL ISOLATION JOINTS PRIOR TO PLACING SLABS.



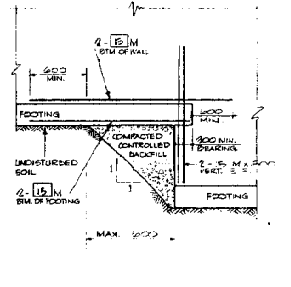
5 TYPICAL SLAB ON GRADE DETAILS

CONCRETE TO BE PLACED IN ALL ISOLATION JOINTS PRIOR TO PLACING SLABS.



5A TYPICAL FOUNDATION DETAILS

CONCRETE TO BE PLACED IN ALL ISOLATION JOINTS PRIOR TO PLACING SLABS.

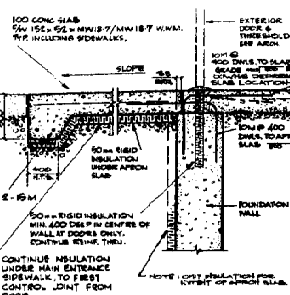


2 STRIP FOUNDATION STEP DETAIL

(granular material)

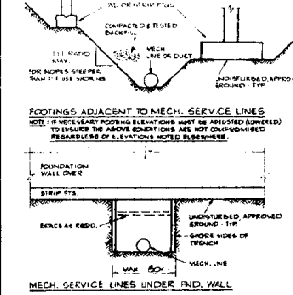
8 TYP. HOUSEKEEPING PAD UNDER MECH. EQUIP.

CONCRETE TO BE PLACED IN ALL ISOLATION JOINTS PRIOR TO PLACING SLABS.



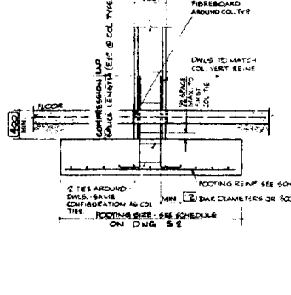
7 SLAB ON GRADE AT EXTERIOR MAN DOOR LOCATIONS

CONCRETE TO BE PLACED IN ALL ISOLATION JOINTS PRIOR TO PLACING SLABS.



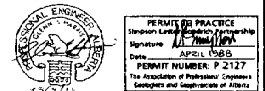
4 TYPICAL FOUNDATION DETAILS

CONCRETE TO BE PLACED IN ALL ISOLATION JOINTS PRIOR TO PLACING SLABS.



1 TYPICAL SPREAD FOOTING

CONCRETE TO BE PLACED IN ALL ISOLATION JOINTS PRIOR TO PLACING SLABS.



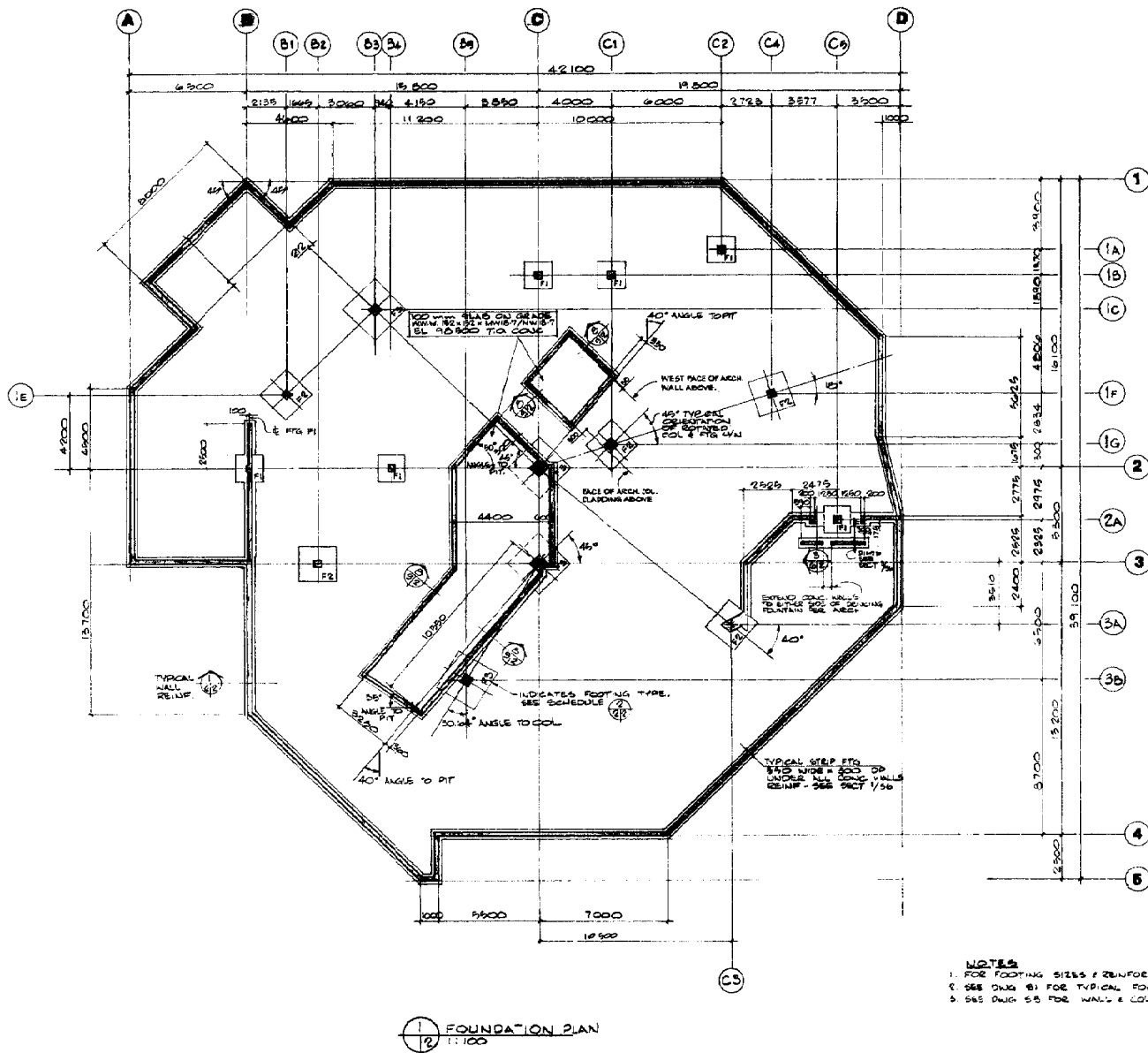
## AS CONSTRUCTED

## LAKE LOUISE VISITOR CENTRE

Designing the future with us.

DESIGN NOTES  
TYPICAL DETAILS

Designed by: conceptual	DESIGN	Approved by: approved	DESIGN
Drawn by: R. SMITH	DESIGN	Checked by: R. SMITH	DESIGN
Project number: 8818-8851-88988	DESIGN	Project number: 8818-8851-88988	DESIGN
Scale: 1/8" = 1'-0"	DESIGN	Scale: 1/8" = 1'-0"	DESIGN
Sheet: 1 of 40	DESIGN	Sheet: 1 of 40	DESIGN



MARK	SIZE (LxWxD)	REINFORCING	REMARKS
F1	1800 x 500 x 425	7-15M BOT. E.W.	
F2	2000 x 2000 x 900	8-20M BOT. E.W.	
F3	2400 x 2400 x 600	1-20M BOT. E.W.	



PERMIT TO PRACTICE  
 Signature: [Signature]  
 Date: APRIL 1988  
 PERMIT NUMBER: P 2127  
 The Association of Professional Engineers and Geoscientists of Alberta

NO.	DATE	DESCRIPTION	PREPARED BY	APPROVED BY

Parks Canada / Parcs Canada  
 Engineering and Architecture / Génie et architecture

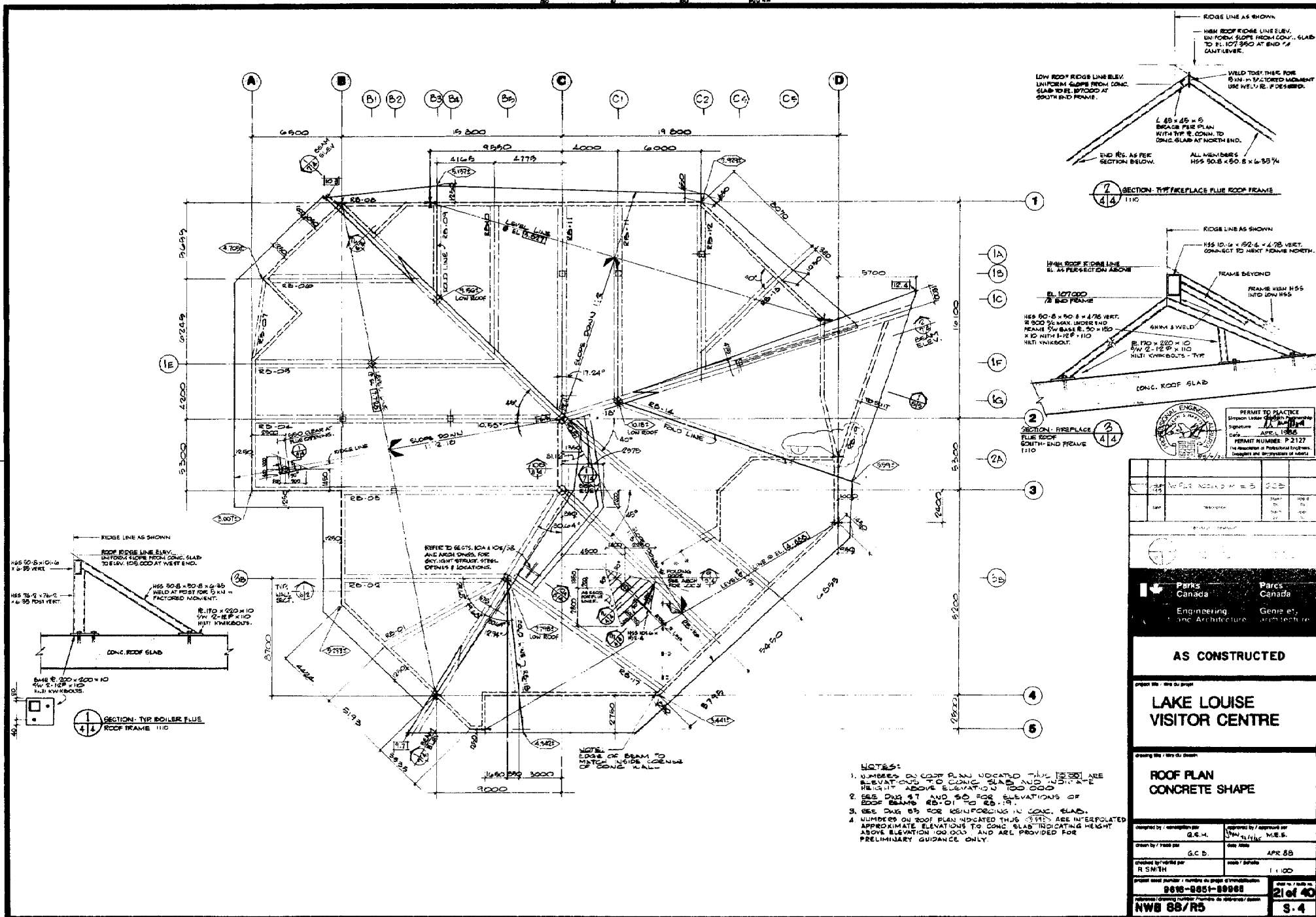
AS CONSTRUCTED

Project title / titre du projet  
**LAKE LOUISE VISITOR CENTRE**

Working title / titre de dessin  
**FOUNDATION PLAN**

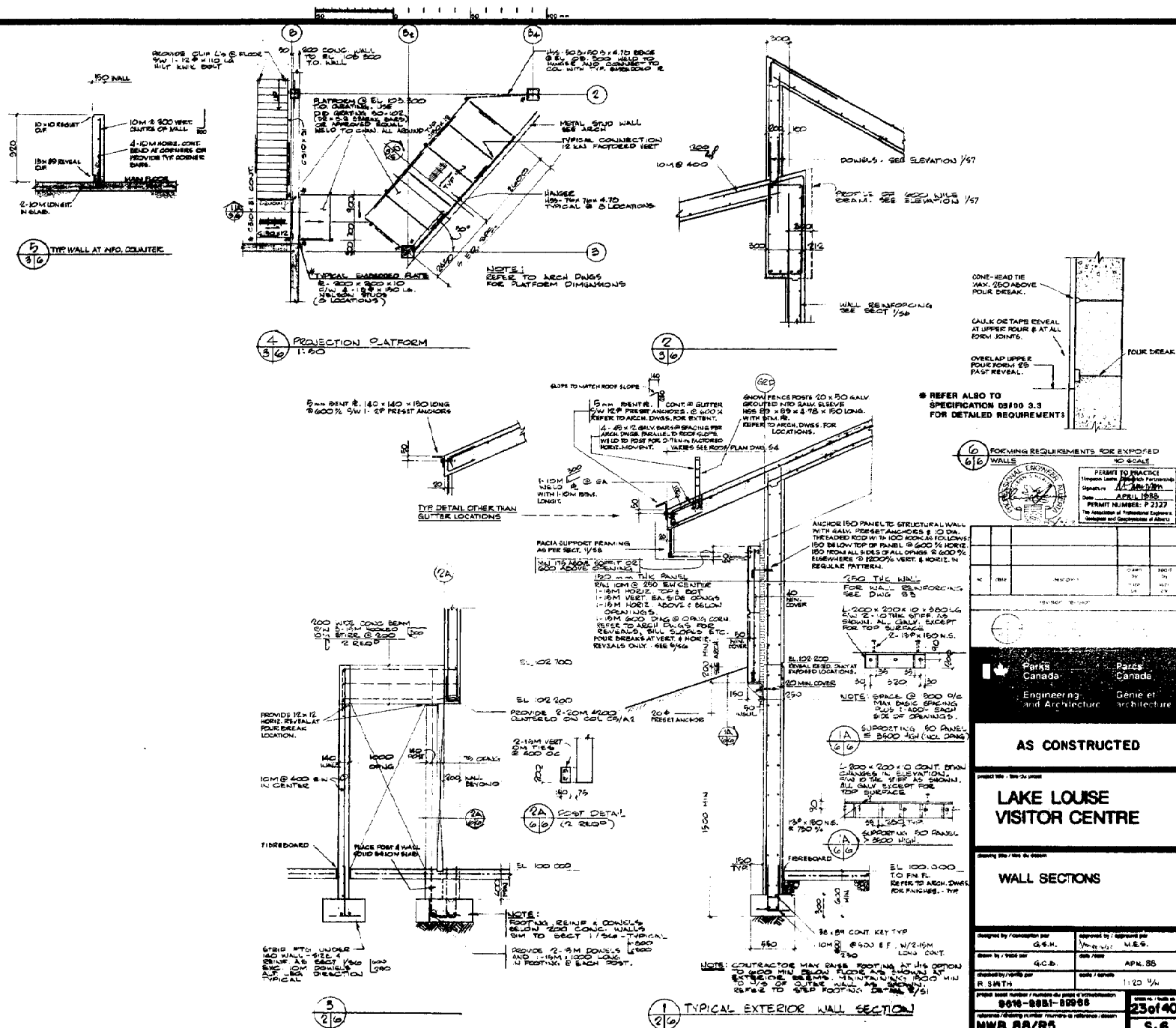
Designed by / conçu par G.S.M.	Approved by / approuvé par M.E.S.
Drawn by / dessiné par d.c.b.	Date / date APR. 88
Checked by / vérifié par R. SMITH	Scale / échelle 1:100
Project sheet number / numéro de page d'impression 8818-0651-08088	Sheet number / numéro de page 19 of 40
Author's drawing number / numéro de dessin d'auteur NWB 88/R5	Sheet number 5-2

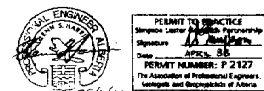
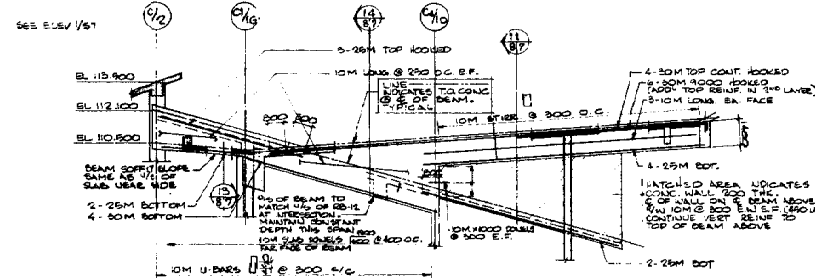
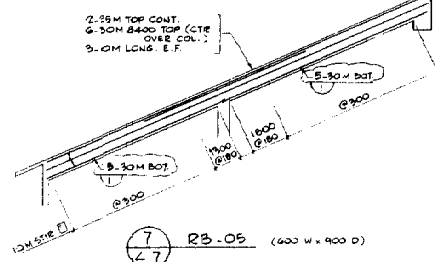
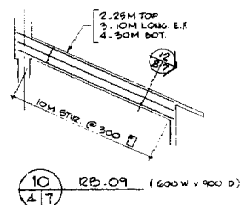
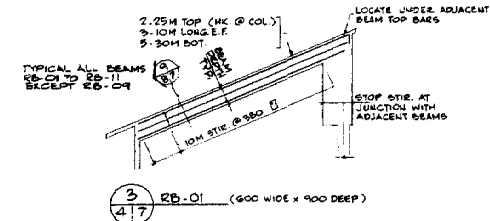
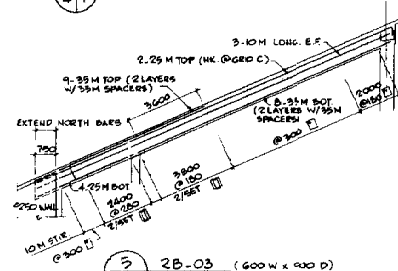
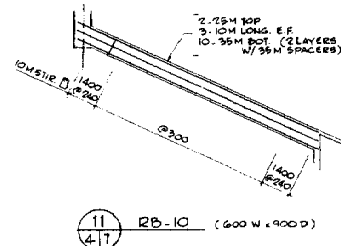
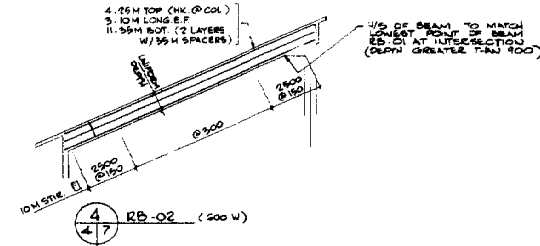
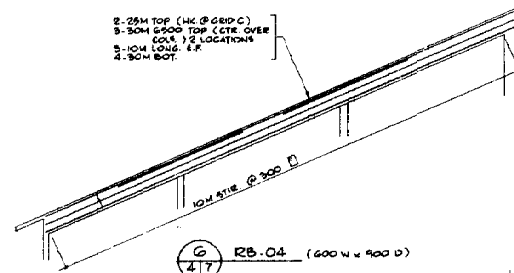
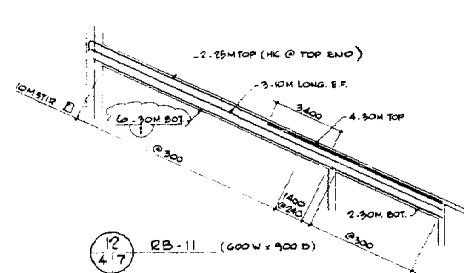




<b>PERMIT TO PRACTICE</b> Signature: <i>[Signature]</i> Date: <i>APR 1986</i> PERMIT NUMBER: P-2127 The Association of Professional Engineers, Technicians and Surveyors of Alberta	
<b>Parks Canada</b> Engineering and Architecture Gene et Architecture	
<b>AS CONSTRUCTED</b>	
<b>LAKE LOUISE VISITOR CENTRE</b>	
<b>ROOF PLAN CONCRETE SHAPE</b>	
designed by / conçu par G.C.B. drawn by / dessiné par R. SMITH	approved by / approuvé par J.W.H. M.E.S. date / date APR 86 scale / échelle 1:100
project record number / numéro du projet 8616-8651-88988	
sheet number / numéro de la feuille 21 of 40 NWS 88/R5 S.4	







1	2	3	4	5	6	7	8	9	10	11	12
1	2	3	4	5	6	7	8	9	10	11	12

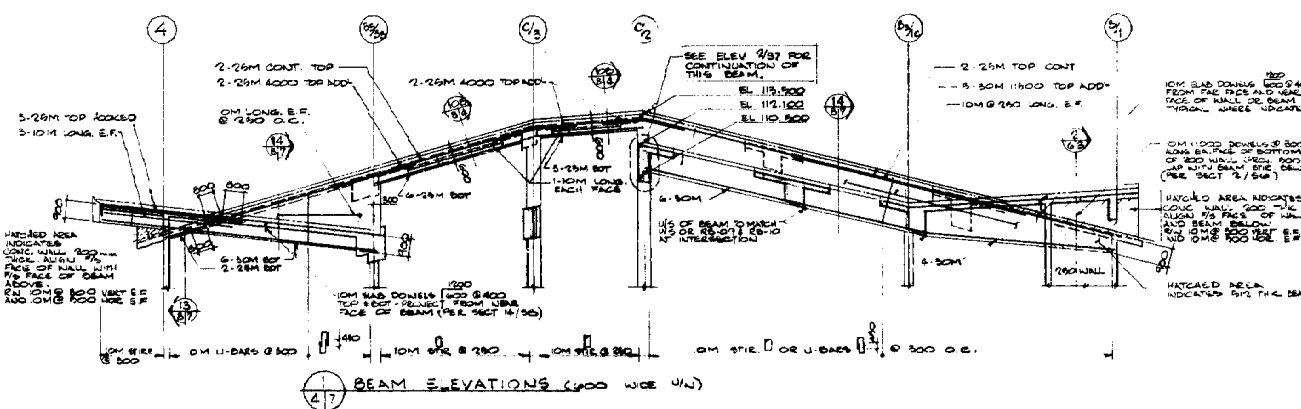
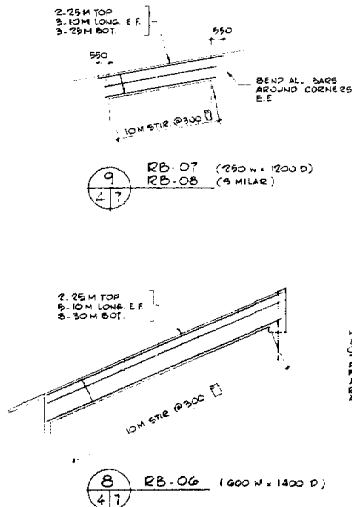


## AS CONSTRUCTED

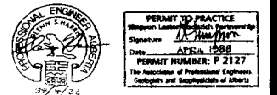
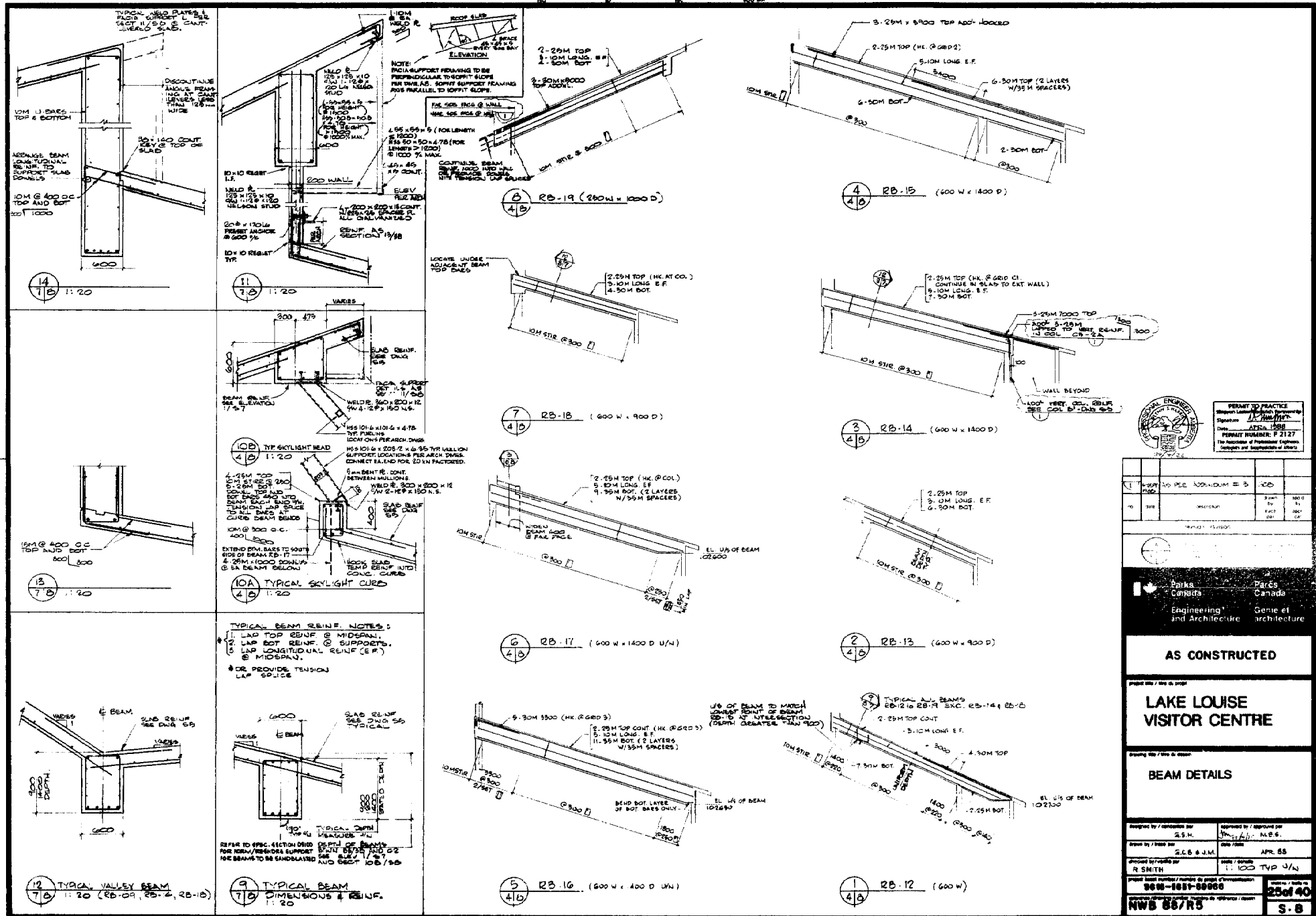
## LAKE LOUISE VISITOR CENTRE

## BEAM DETAILS

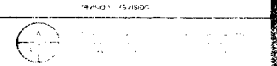
designed by / conception par	G.E.H.	checked by / revu par	G.E.H.	date	APR 85
drawn by / dessiné par	R. SMITH	scale / échelle	1:100	sheet no. / feuille no.	24 of 40
project name / nom du projet	LAKE LOUISE VISITOR CENTRE				
reference drawing number / numéro de référence / dessin	NWB 68/R5				







NO.	REVISION	DATE	BY	CHKD.
1	ISSUED FOR CONSTRUCTION	1998	R. SMITH	



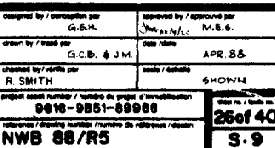
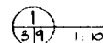
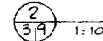
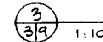
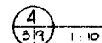
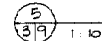
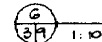
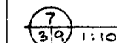
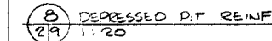
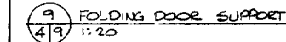
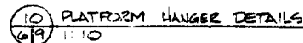
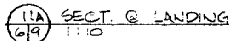
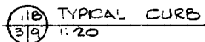
Parcs Canada	Parcs Canada
Engineering and Architecture	Genie et architecture

**AS CONSTRUCTED**

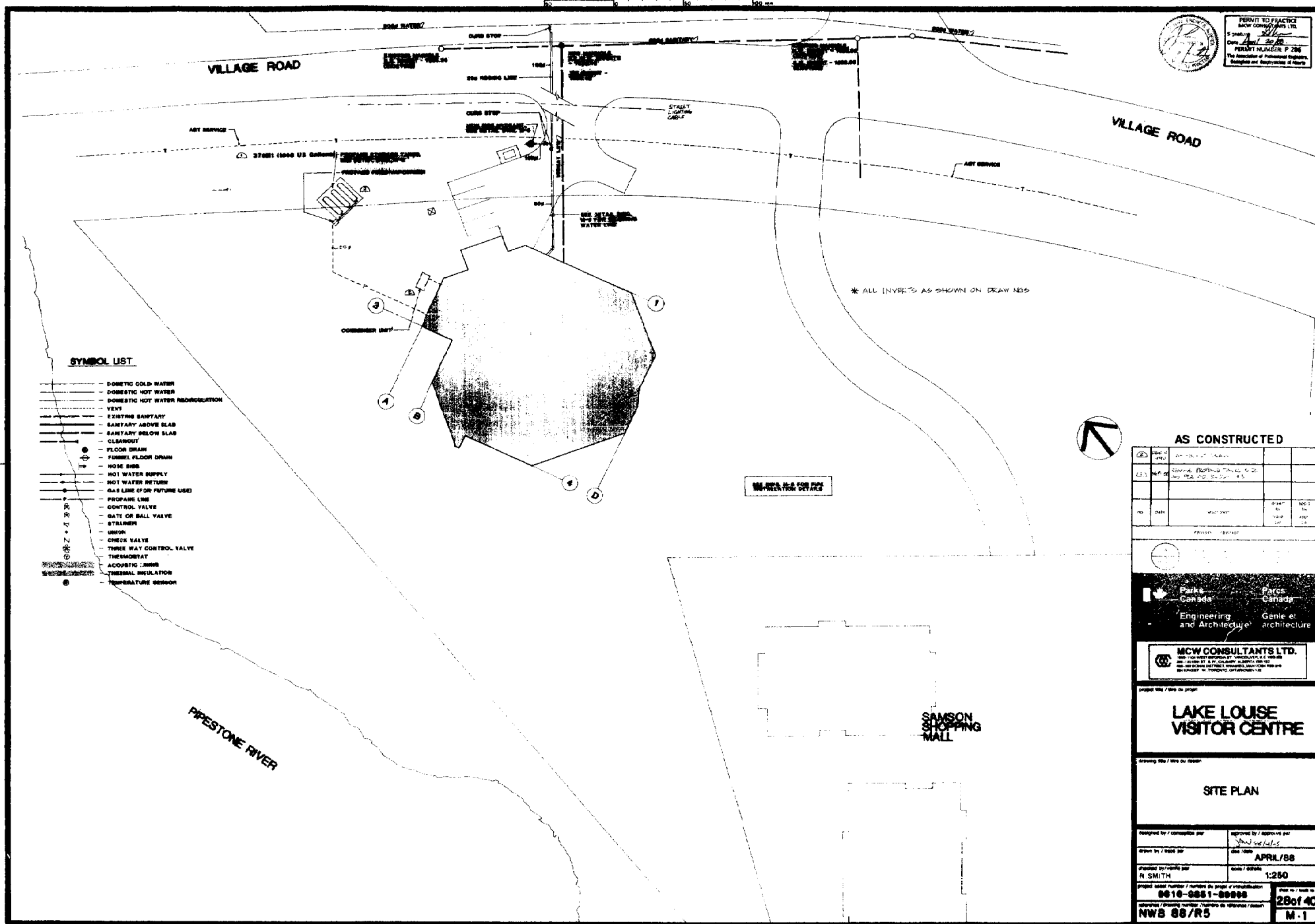
**LAKE LOUISE VISITOR CENTRE**

**BEAM DETAILS**

Designed by / concevues par R. SMITH	Approved by / approuve par M. B. C.
Drawn by / dessine par R. SMITH	Checked by / verifie par M. B. C.
Project / projet LAKE LOUISE VISITOR CENTRE	Scale / echelle 1:100 TYP
Project number / numero de projet 9808-1001-00000	Revision / revision 25 of 40
North arrow / flèche du nord NWB 88/R5	Sheet number / numero de feuille S-8









**FIREPLACE FLUE DETAIL nts**

**FIREPLACE FLUE DETAIL nts**

**AS CONSTRUCTED**

17	18	19		
20	21	22	23	24

$$T(\mathbf{A}) = \mathbf{B} \quad \text{if} \quad \mathbf{A} = \mathbf{B} \quad \text{and} \quad \mathbf{A} \in \Sigma$$


 **Parks Canada**  
Engineering and Architecture



**MCW CONSULTANTS LTD.**

Journal of Management Inquiry 22(1) 3-14  
© The Author(s) 2013  
Reprints and permissions: [sagepub.com/journalsPermissions.nav](http://sagepub.com/journalsPermissions.nav)

**LAKE LOUISE  
VISITOR CENTRE**

Drawing title: Two-du' Cooten

### FLOOR PLAN

plbg/sork

continued by / concentration /

continued from page 10

October 1997 / March 1998

Shaw 60/446

---

APRIL 8, 1981

R SMITH

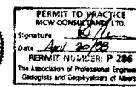
**£100**

2-012-0021-00000

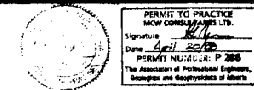
Wages: no. / hours no.

reference / breeding number, number of eggs, etc.

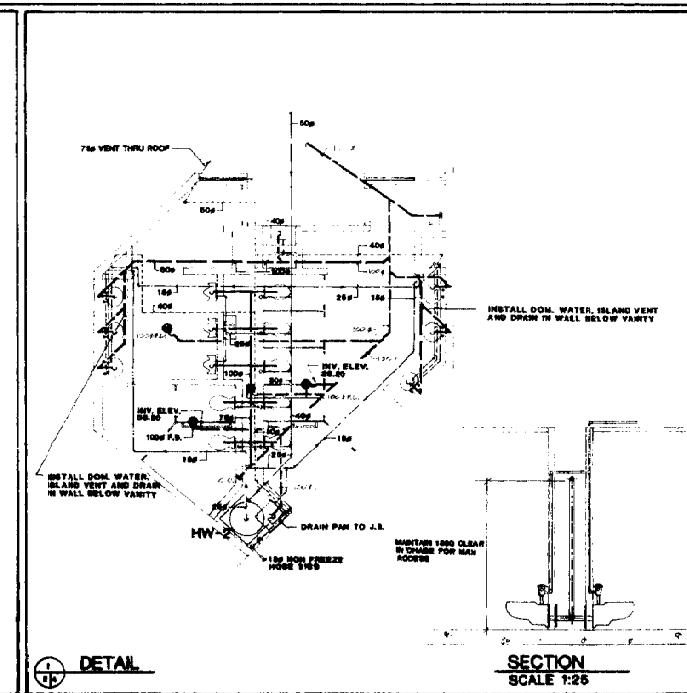
**298140**



\_\_\_\_\_



**AS CONSTRUCTED**

[illegible]

**DETAIL N.T.S.**  
**STANDING SEAM INSULATION**

DETAIL N.T.S.  
CONNECTION TO  
CONCRETE BASE

DETAIL N.T.S.  
AIR UNIT ACCESS DOOR

DUCTS PASSING  
THRU CONCRETE  
DETAIL NTS

DETAIL N.T.S.  
TYPICAL EXPANSION TANK

DETAIL N.T.S.  
FIRE HYDRANT

INLINE PUMP DETAIL (P-1,2) N.T.B

DETAIL N.T.S.  
REHEAT COIL

**DETAIL N.T.S. CEILING MOUNTED  
ELECTRIC HOT WATER HEATER**

DETAIL N.T.S.  
AIR LOUVER

GLYCOL INJECTION PUMP DETAIL M.T.B.

DETAIL N.T.S.  
WATER METER



**AS CONSTRUCTED**

mg	1000	50.00	10.00	10.00	10.00



 Parks Canada  
Engineering and Architecture

**MCW CONSULTANTS LTD.**  
1892-1308 WEST OMCORRA ST. MANICOMPTON, B.C. V6S 2S8  
800-361-3611 ST. S.W. CALGARY, ALBERTA T2P 1B7  
800-312 DONALD STREET, WINNIPEG, MANITOBA R3S 1Y8

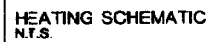
**LAKE LOUISE  
VISITOR CENTRE**

© 2000 Blackwell Science Ltd

## DETAILS & SCHEMATICS

designed by / conception par	approved by / approved par W. K. J.
drawn by / tracé par	date / date APRIL/88
checked by / vérifié par R SMITH	scale / échelle AS NOTED
project name / nom du projet / immatriculation 0510-8861-89066	
reference / drawing number / numéro de référence / dessin NWB 88/R5	





AS CONSTRUCTED

 Parks Canada / Parcs Canada

**MCW CONSULTANTS LTD.**  
198-1 NORTH WILSON ST. VANCOUVER B.C. V6C 2R9  
206-1011 8TH ST. W. CALGARY, ALBERTA T2P 1B7  
800-382 DONALD STREET, WINDSOR, ONTARIO N9A 6L6  
244 KING ST. W. TORONTO, ONTARIO M5T 1A3

projet title : titre du projet

**LAKE LOUISE  
VISITOR CENTRE**

Journal Title / Issue No. / Date

## DETAILS & SCHEMATICS

designed by / conception par	approved by / approuvé par <i>Jan</i> 31-4-88
drawn by / tracé par	date / date <b>APRIL/88</b>
checked by / vérifié par <b>R. SMITH</b>	scale / échelle <b>AS NOTED</b>

project asset number / numero de projet d'immobilisation  
**9918-8861-89986**

reference drawing number / numero de reference dessin  
**NWB 88/R5**

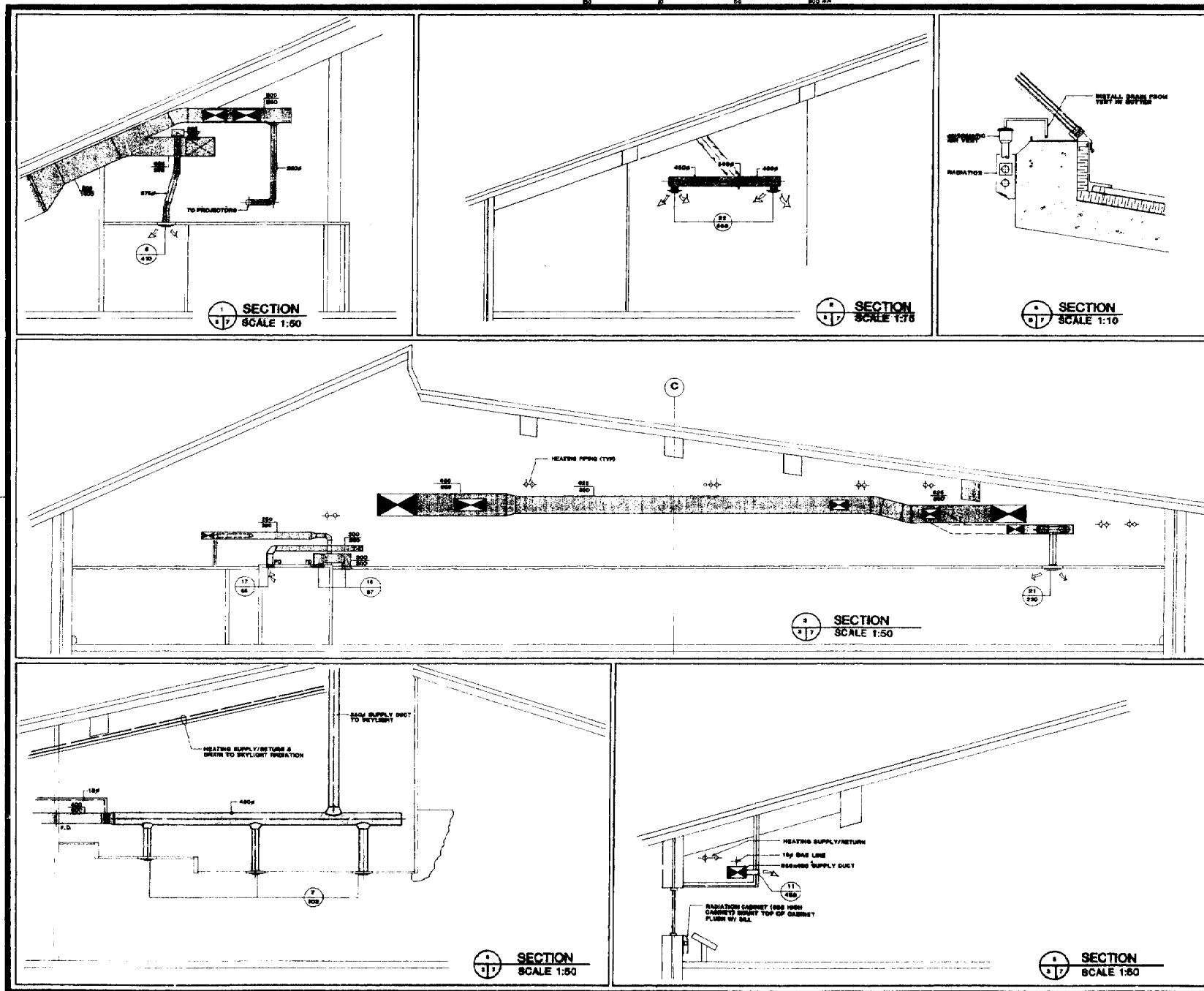
AS NOTED

33 of 40

M. 6

33 of 40  
M. 6





ENGINE TO PRACTICE  
NEW CONSULTANTS LTD.  
OFFICE: *K.L.*  
C.O.P. *1/2/88*  
SECTION NUMBER: P 256  
THE ASSOCIATION OF PROFESSIONAL ENGINEERS  
ON BEHALF OF THE GOVERNMENT OF ALBERTA

# AS CONSTRUCTED

NO.	DATE	REVISION	BY	APP'D
1	1/2/88	1	K.L.	

NO.	DATE	REVISION	BY	APP'D
1	1/2/88	1	K.L.	

Park Canada	Park Canada
Engineering and Architecture	Engineering and Architecture

<b>MCW CONSULTANTS LTD.</b> 1000 WESTERN AVENUE, SUITE 100, CALGARY, ALBERTA T2P 1K1 TEL: (403) 242-1111 FAX: (403) 242-1112 BENTLEY ST. W. TORONTO ONTARIO M5T 1A5
--

Project No. / File No. 0951

## LAKE LOUISE VISITOR CENTRE

Drawing Title / Titre du Dessin

### SECTIONS

Designed by / conception par	Reviewed by / approuvé par
Drawn by / dessiné par	DATE: <b>APRIL/88</b>
Issued by / distribué par	Scale / échelle: <b>AS NOTED</b>
Project Number / Numéro du projet: <b>9618-9831-80988</b>	Sheet No. / Feuille: <b>34 of 40</b>
Revision / Révision: <b>NWB 88/R5</b>	Project / Projet: <b>M-7</b>

## SYMBOLS LIST

## SYMBOLS LIST

	FLUORESCENT FIXTURE, RECESSED IN CEILING.
	FLUORESCENT FIXTURE, SURFACE MOUNTED.
	FLUORESCENT FIXTURE, WALL MOUNTED.
	FLUORESCENT STRIP FIXTURE, SURFACE MOUNTED.
	NIGHTLIGHT FIXTURE.
	INCANDESCENT OR R.L.O. FIXTURE, RECESSED IN CEILING.
	INCANDESCENT OR R.L.O. FIXTURE, SURFACE OR PENDANT MOUNTED.
	INCANDESCENT OR R.L.O. FIXTURE, WALL MOUNTED.
	FLOOD LIGHT.
	R.L.O. LIGHTING FIXTURE, POLE MOUNTED.
	EXIT FIXTURE, CEILING MOUNTED.
	EXIT FIXTURE, WALL MOUNTED.
	TRACK LIGHT.
	SHADING OF A FIXTURE INDICATES ON EMERGENCY POWER.
	ELECTRICAL MOTOR.
	JUNCTION BOX, MOUNTED ABOVE ACCESSIBLE CEILING.
	JUNCTION BOX, WALL MOUNTED.
	TELEPHONE JUNCTION BOX, CEILING MOUNTED.
	DUPLEX CONVENIENCE OUTLET, WALL MOUNTED.
	DOUBLE DUPLEX CONVENIENCE OUTLET, WALL MOUNTED.
	DUPLEX CONVENIENCE OUTLET WITH GROUND FAULT INTERRUPTER CIRCUIT BREAKER.
	DUPLEX CONVENIENCE OUTLET, MOUNTED IN FLOOR MONUMENT.
	SURGE PROTECTION RECEPTACLE.
	WEATHERPROOF RECEPTACLE.
	SINGLE PHASE CONNECTION.
	THREE PHASE CONNECTION.
	CARD READER.
	DOOR CLOSER.
	TELEPHONE OUTLET, WALL MOUNTED. (IP - PUBLIC).
	TELEPHONE OUTLET, MOUNTED IN FLOOR MONUMENT.
	ISOLATED GROUND POWER JUNCTION BOX.
	CRT OUTLET, WALL MOUNTED.
	CRT OUTLET, MOUNTED IN FLOOR MONUMENT.
	DATA JUNCTION BOX, CEILING MOUNTED.
	MOTOR SPEED CONTROL.
	THERMOSTAT (SUPPLIED BY DIV. 15 INSTALLED BY DIV. 16).
	UNDERCARPET WIRING.
	CONDUIT RUN CONCEALED IN SLAB, UNDERSLAB OR UNDERGRAINS.
	CONDUIT RUN CONCEALED IN WALL OR CEILING.
	CONDUIT HOMERUN, CONTINUOUS RUN TO PANEL OR EQUIPMENT CABINET.
	EXPOSED CONDUIT.
	CONDUIT TURNED UP.
	CONDUIT TURNED DOWN.
	CONDUIT AND WIRE; CROSSHAIRS INDICATE THE QUANTITY OF CONDUCTORS, SIZE, NUMBER MOUNTED TO CROSSHAIRS INDICATE WIRE SIZE. NO NUMBER INDICATES #12 WIRE AND NO CROSSHAIRS INDICATES 2-#12, 90M.
	NUMBER NOTE APPLIES TO ALL DRAWINGS.
	EQUIPMENT IDENTIFICATION TAG.
	FIXTURE IDENTIFICATION TAG.
	FIRE OUTLET, 300 GPM CEILING.
	PHOTOCELL.
	TIMECLOCK.
	DOWNWARD MOUNTED PANEL.
	RECESSED MOUNTED PANEL.
	1/2" SWITCH, INSTALLED AND WIRED BY ELECTRICAL.
	MICROPHONE OUTLET.
	PUSHBUTTON STATION.
	FUSED DISCONNECT SWITCH.
	MOTION DETECTOR.
	KEYSWITCH.

	SINGLE POLE TOGGLE SWITCH.
	DOUBLE POLE TOGGLE SWITCH.
	THREE WAY TOGGLE SWITCH.
	FOUR WAY TOGGLE SWITCH.
	DIMMER SWITCH.
	SWITCH WITH PILOT LIGHT.
	MOTOR RATED SWITCH WITH THERMAL OVERLOAD ELEMENT.
	LOW VOLTAGE LIGHTING CONTROL STATION.
	DRIVEN GROUND ROD.
	CIRCUIT BREAKER.
	FUSED SWITCH.
	TRANSFORMER.
	CONNECTION TO GROUND.
	ARMAGLASS STATION.
	EXIT DETECTOR.
	SMOKE DETECTOR.
	REMOTE EMERGENCY HEAD.
	EMERGENCY BATTERY PACK (ON ALL HARDWARE AND CONNECTIONS).
	FIRE ALARM CONTROL PANEL.
	FIRE ALARM BELL.
	BELL.
	SUPPLY AIR DUCT SMOKE DETECTOR.
	END OF LINE RESISTOR.
	FIXED TEMPERATURE HEAT DETECTOR.
	FIRE ALARM SPEAKER. *DENOTES ZONE.
	WALL MTD. SPEAKER, R-DENOTES ADDRESS, *-DENOTES ZONE.

## DRAWING LIST

## DRAWING LIST:

E-1	SYMBOLS LIST
E-2	ONE LINE DIAGRAM AND SCHEMATIC
E-3	WIRING PLAN
E-4	POWER LAYOUT
E-5	LIGHTING LAYOUT
E-6	DETAILS

## FIRE ALARM SCHEDULE

## FIRE ALARM ZONE SCHEDULE:

ZONE 1	ADMINISTRATION AREA
ZONE 2	PUBLIC AREA
ZONE 3	Mechanical Room
ZONE 4	DUCT DETECTOR (S-1)

## SPEAKER SCHEDULE

## SPEAKER ZONE SCHEDULE:

ZONE A	RECEPTION AREA
ZONE B	TELETYPE AREA
ZONE C	ADMINISTRATION AREA

Project No.	100-100-100	Rev.	1
Date	1988-03-01	Drawn by	PMO
Checked by	PMO	Scale	As Shown



Parks Canada	Parks Canada
Engineering and Architecture	Engineering and Architecture

## AS CONSTRUCTED

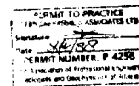
Project No. / No. du projet

## LAKE LOUISE VISTOR CENTRE

Drawing No. / No. du dessin

## SYMBOLS LIST

Designed by / conçu par PMO	Approved by / approuvé par GFS
Drawn by / dessiné par PMO	Date / date MARCH 1988
Checked by / vérifié par BFS / R SMITH	Scale / échelle NONE
Project name / Nom du projet d'investissement LAKE LOUISE VISTOR CENTRE	Sheet No. / Feuille No. 35 of 40
Project number / Numéro de référence NWE 88/R5	






- C F10 & F11 FIXTURE MTG. DETAIL**  
32 NT8



project asset number / numéro de projet d'investissement	asset no. / numéro de
9516-001-0000 (00172)	36 of 40
reference / dossier number / numéro de référence / dossier	E.2
NWB 88/R5	



revision (revision)		date	user
	A. [unclear] B. [unclear] C. [unclear] D. [unclear]		



 **Parcs  
Canada**  
**Engineering  
and Architecture**

AS CONSTRUCTED

Project title / titre du projet

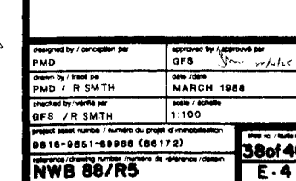
**LAKE LOUISE  
VISITOR CENTRE**

Drawing file / titre du dessin

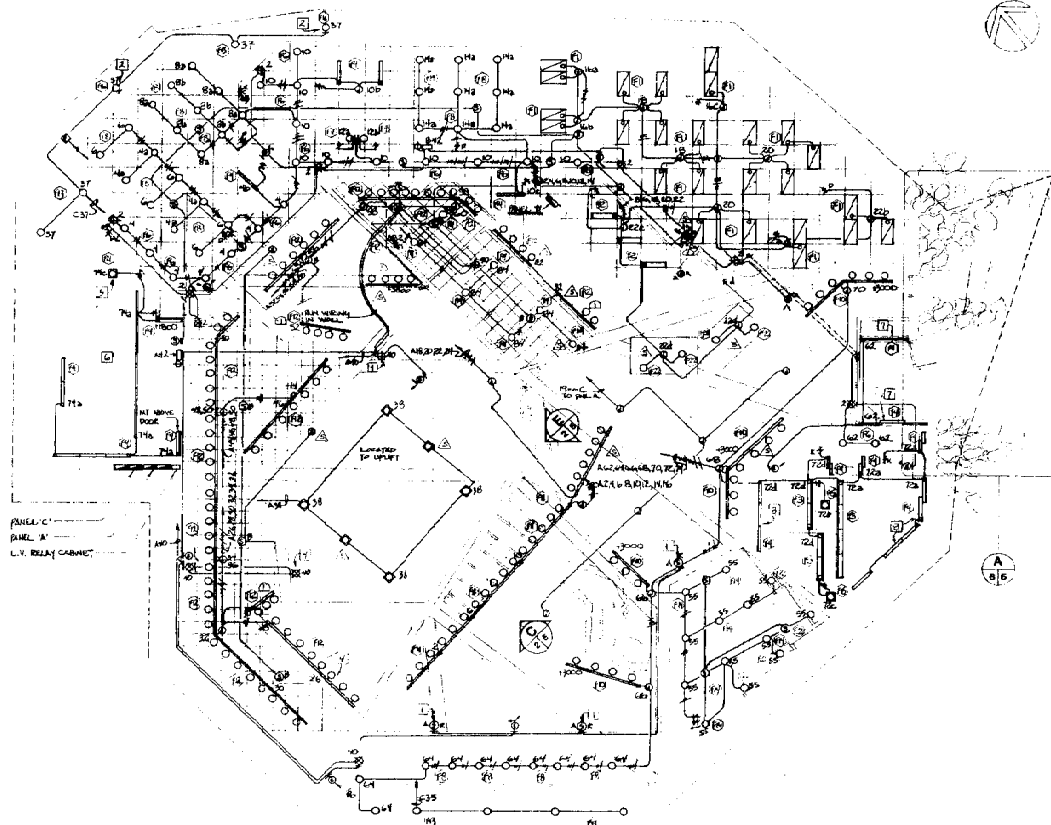
ELECTRICAL SITE PLAN

designed by / conception par PMD	approved by / approve par QFS <i>Jan 13-1988</i>
drawn by / trace par PMD	date / date MARCH 1988
checked by / verify par GFS /	scale / échelle 1:250

project dossier number / numéro du projet d'immobilisation 6616-6661-66986 (66172)	sheet no. / feuille no. <b>37 of 40</b>
reference / dossier number / numéro de référence / dossier <b>NWB 88/R5</b>	<b>E-3</b>



- [illegible]



L.V. CIRCUIT CONTROL SCHEDULE		
STAF #	GROUP	CIRCUITS CONTROLLED
1	A	B11718,20
	B	B224
	C	A70
	D	A68
	E	A68
	F	A68
	G	A71,8,10,12,14,16,18,20,22
	H	A15
	I	A2,28,30,32,34,36,38,40,42,44
	J	A48
2		A52,54,56,58,60,62
3		B415
4		A48,54,56,58,60,62
5		A71,8,10,12,14,16,18,20,22

## NOTES:

1. Mount device in face of wallhead.
2. CONVEN ADJUSTING SCREW OF FIXTURE PLUCK TO COLUMN-H
3. Remove dimmer switches to be Prescolite "Hoxton" series little or H155, ivory in colour.
4. Mount device on face of columnhead.
5. Confers with mechanical consultant exact location of fixtures prior to installation.
6. SPECIAL WARNING: AFTER MECHANICAL CONSULTANT'S INSURANCE TO AVOID ANY AND ALL MECHANICAL DAMAGE.
7. SUPPLY WHITE EGGSHATE LENS. SEE SPEC.
8. SUPPLY SILVER PARABOLIC LENS. SEE SPEC.
9. CONFERS WITH ARCHITECT & ENGINEER LOCATION OF TYPE F12 FIXTURES PRIOR TO INSTALLATION.

## FIXTURE SCHEDULE

## FIXTURE SCHEDULE

- Type F1: Metric 120x400 six handling fluorescent fixture, Fluorescence FPM300A-12 c/w 1 - 740 metric w.w. lamps.
- Type F2: Metric 300x300 surface mounted fluorescent fixture, Fluorescence FPM300-37 c/w 2 - 740 metric w.w. lamps.
- Type F3: Wall mounted metric fluorescent fixture, Fluorescence FPM300-37 c/w 1 - 740 metric w.w. lamp.
- Type F4: Surface mounted metric fluorescent fixture, 400 or 1200mm, Fluorescence FPM300 or FPM400 c/w metric w.w. lamps.
- Type F5: Suspended metric fluorescent fixture, Peerless Long-life 8-30-1000225 c/w 2 - 740 metric w.w. lamps. Colour to be confirmed by architect. Suspended by aircraft cable at 4250mm APT.
- Type F6: Recessed fluorescent pot light fixture, Halo 8 47891-1840C c/w twin F1-11 lamps.
- Type F7: Wall mounted incandescent fixture, Halo 8X2540 c/w 1 - 40W A15 lamp.
- Type F8: Recessed incandescent fixture, Halo 8X7617-1650BA c/w 1 - 150W A49 lamp.
- Type F9: Surface mounted incandescent fixture, c/w 1-150Watt A49 lamp.
- Type F10: Low voltage track head, Halo 8X2717 c/w 1 - 75W 12V MR11 lamp. Supply 25 heads.
- Type F11: Low voltage track head, Halo 8X2716 c/w 50W 12V PAR 16 lamp. Supply 25 heads.
- Type F12: Low voltage track head, Halo 8X1750 c/w 50W 12V MR11 lamp, and low circuit track plus all mounting hardware and fittings. Supply 65 heads.
- Type F13: Recessed H.I.D. fixture, Halo 8X7610-750-55000C c/w 1 - 175 watt metal halide lamp.
- Type F14: Recessed incandescent fixture, Halo 8X7700-1600BA c/w 1 - 100W A49 lamp.
- Type F15: Surface mounted keyless fixture, c/w 1-100W A49 lamp.
- Type F16: Wall mounted H.I.D. fixture, Crouse-Hinds 8XAC-175HAP2 c/w 1 - 175W metal halide lamp.
- Type F17: Square bollard H.I.D. fixture, Crouse-Hinds 8XBL18 c/w 1 - 175W metal halide lamp. Supply beamstop price for detection of fixtures.
- Type F18: Quartz flood lamp, Crouse-Hinds 8XQB100M c/w 1 - 300 watt quartz lamp.
- Type F19: Recessed incandescent fixture, Halo 8X7680T-1650BA c/w 1-250w quartz T-4 lamp and sloped ceiling adjuster kit.
- Type F20: Recessed H.I.D. fixture, Halo 8X7210-760-56200C c/w 1 - 250 watt metal halide lamp and sloped ceiling adjuster kit. Lamp to be placed in the upper position.
- Type F21: Vapour proof incandescent fixture, Crouse-Hinds 8XW110 c/w 1 - 150 watt A-21 lamp.
- NOTE: See specification for lamp type and colour of type F16, F11 and F12 fixtures.
- Type F22: RECESSED OR INCANDESCENT FIXTURE, HALO 8X7680T-1650BA c/w 1-250W QUARTZ LAMP.

NO.	DESCRIPTION	QTY	UNIT
1	TYPE F1	1	EA
2	TYPE F2	1	EA
3	TYPE F3	1	EA
4	TYPE F4	1	EA
5	TYPE F5	1	EA
6	TYPE F6	1	EA
7	TYPE F7	1	EA
8	TYPE F8	1	EA
9	TYPE F9	1	EA
10	TYPE F10	1	EA
11	TYPE F11	1	EA
12	TYPE F12	1	EA
13	TYPE F13	1	EA
14	TYPE F14	1	EA
15	TYPE F15	1	EA
16	TYPE F16	1	EA
17	TYPE F17	1	EA
18	TYPE F18	1	EA
19	TYPE F19	1	EA
20	TYPE F20	1	EA
21	TYPE F21	1	EA
22	TYPE F22	1	EA

NO.	DESCRIPTION	QTY	UNIT
1	TYPE F1	1	EA
2	TYPE F2	1	EA
3	TYPE F3	1	EA
4	TYPE F4	1	EA
5	TYPE F5	1	EA
6	TYPE F6	1	EA
7	TYPE F7	1	EA
8	TYPE F8	1	EA
9	TYPE F9	1	EA
10	TYPE F10	1	EA
11	TYPE F11	1	EA
12	TYPE F12	1	EA
13	TYPE F13	1	EA
14	TYPE F14	1	EA
15	TYPE F15	1	EA
16	TYPE F16	1	EA
17	TYPE F17	1	EA
18	TYPE F18	1	EA
19	TYPE F19	1	EA
20	TYPE F20	1	EA
21	TYPE F21	1	EA
22	TYPE F22	1	EA

NO.	DESCRIPTION	QTY	UNIT
1	TYPE F1	1	EA
2	TYPE F2	1	EA
3	TYPE F3	1	EA
4	TYPE F4	1	EA
5	TYPE F5	1	EA
6	TYPE F6	1	EA
7	TYPE F7	1	EA
8	TYPE F8	1	EA
9	TYPE F9	1	EA
10	TYPE F10	1	EA
11	TYPE F11	1	EA
12	TYPE F12	1	EA
13	TYPE F13	1	EA
14	TYPE F14	1	EA
15	TYPE F15	1	EA
16	TYPE F16	1	EA
17	TYPE F17	1	EA
18	TYPE F18	1	EA
19	TYPE F19	1	EA
20	TYPE F20	1	EA
21	TYPE F21	1	EA
22	TYPE F22	1	EA

## AS CONSTRUCTED

PROJECT NO. / NO. DU PROJET

LAKE LOUISE  
VISTOR CENTRE

Drawing title / titre du dessin

## LIGHTING LAYOUT

Designed by / concepu par	approved by / approuve par
P.M.O.	G.F.S.
Drawn by / dessiné par	date / date
P.M.O.	MARCH 1988
checked by / vérifié par	scale / échelle
G.F.S. / R. SMITH	1:100
Project name / nom du projet	Project number / numéro du projet
LAKE LOUISE VISTOR CENTRE	8810-8811-8812 (88178)
Project name / nom du projet	Project number / numéro du projet
NWB 88/R5	39 of 40
	E-5

1 of 1