



**RETURN BIDS TO:**

**RETOURNER LES SOUMISSIONS À:**

Public Works and Government Services / Travaux  
publics et services gouvernementaux  
Kingston Procurement  
Des Acquisitions Kingston  
86 Clarence Street, 2nd floor  
Kingston  
Ontario  
K7L 1X3  
Bid Fax: (613) 545-8067

**SOLICITATION AMENDMENT  
MODIFICATION DE L'INVITATION**

The referenced document is hereby revised; unless otherwise  
indicated, all other terms and conditions of the Solicitation  
remain the same.

Ce document est par la présente révisé; sauf indication contraire,  
les modalités de l'invitation demeurent les mêmes.

**Comments - Commentaires**

Address all inquiries to  
Tammy.Weaver@tpsgc-pwgsc.gc.ca

**Vendor/Firm Name and Address**

Raison sociale et adresse du  
fournisseur/de l'entrepreneur

**Issuing Office - Bureau de distribution**

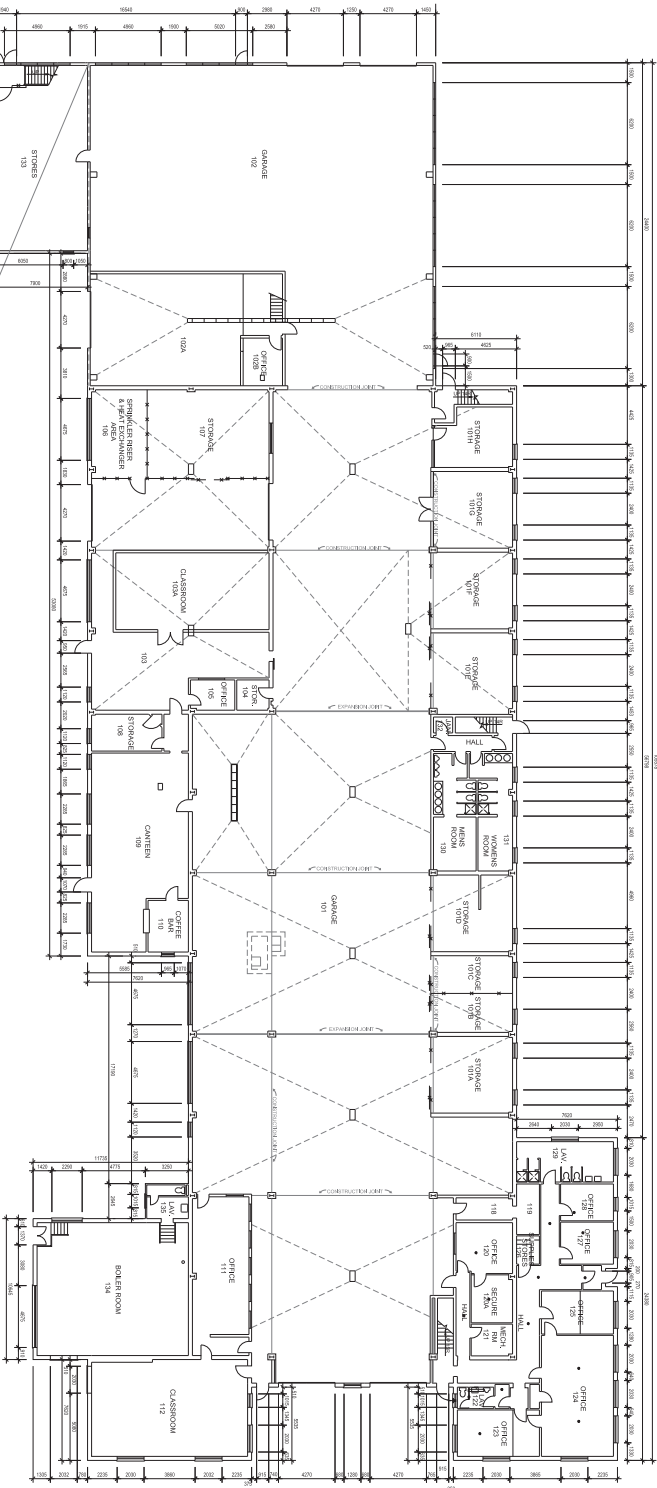
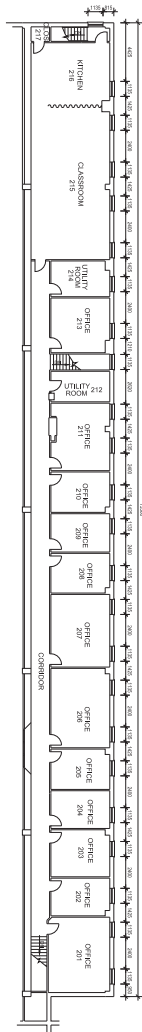
Public Works and Government Services / Travaux  
publics et services gouvernementaux  
Kingston Procurement  
Des Acquisitions Kingston  
86 Clarence Street, 2nd floor  
Kingston  
Ontario  
K7L 1X3

<b>Title - Sujet</b> Rollerized Flooring	
<b>Solicitation No. - N° de l'invitation</b> W0113-18CS19/A	<b>Amendment No. - N° modif.</b> 001
<b>Client Reference No. - N° de référence du client</b> W0113-18-CS19	<b>Date</b> 2018-11-15
<b>GETS Reference No. - N° de référence de SEAG</b> PW-\$KIN-508-7624	
<b>File No. - N° de dossier</b> KIN-8-50098 (508)	<b>CCC No./N° CCC - FMS No./N° VME</b>
<b>Solicitation Closes - L'invitation prend fin</b> <b>at - à 02:00 PM</b> <b>on - le 2018-12-19</b>	
<b>Time Zone</b> <b>Fuseau horaire</b> Eastern Standard Time EST	
<b>F.O.B. - F.A.B.</b> <b>Plant-Usine:</b> <input type="checkbox"/> <b>Destination:</b> <input type="checkbox"/> <b>Other-Autre:</b> <input type="checkbox"/>	
<b>Address Enquiries to: - Adresser toutes questions à:</b> Weaver, Tammy	<b>Buyer Id - Id de l'acheteur</b> kin508
<b>Telephone No. - N° de téléphone</b> (613) 484-1809 ( )	<b>FAX No. - N° de FAX</b> (613) 545-8067
<b>Destination - of Goods, Services, and Construction:</b> <b>Destination - des biens, services et construction:</b>	

Instructions: See Herein

Instructions: Voir aux présentes

<b>Delivery Required - Livraison exigée</b>	<b>Delivery Offered - Livraison proposée</b>
<b>Vendor/Firm Name and Address</b> <b>Raison sociale et adresse du fournisseur/de l'entrepreneur</b>	
<b>Telephone No. - N° de téléphone</b> <b>Facsimile No. - N° de télécopieur</b>	
<b>Name and title of person authorized to sign on behalf of Vendor/Firm</b> <b>(type or print)</b> <b>Nom et titre de la personne autorisée à signer au nom du fournisseur/</b> <b>de l'entrepreneur (taper ou écrire en caractères d'imprimerie)</b>	
<b>Signature</b>	<b>Date</b>



MEZZANINE FLOOR PLAN  
SCALE 1:100

GROUND FLOOR PLAN  
SCALE 1:100

NO.	DATE	REVISION	APPROVED
3	2024-8	ROOM #102A ADDED	TT
2	2024-3	ADDITIONS TO GYMNASIUM AREA	VS
1	2023-6	REQUIRED TO DATE	VS

SCALE - FLOOR PLAN	ON
LOCATION - BORDEN	
PROJECT - FLOOR PLAN	

NAME - ARCHITECT	DATE
PROJECT - ARCHITECT	10/21/2023

PRODUCTION	COMPARISON - APPROVAL
DESIGNED/FILED	CHK
QUANTITY/FILED	CHK
QUANTITY/FILED	CHK
QUANTITY/FILED	CHK

FILE NUMBER	FILE NO. - DESIGN NO.
	L-8147-2505-301



LEGEND

- ALL WHOLE NUMBERS INDICATE MILLIMETERS.
- ALL NUMBERS EXPRESSED TO THREE DECIMAL PLACES INDICATE METERS. NOTE THAT 3049 mm = 30.49 m.
- ALL DIMENSIONS ARE TO THE INHIBIT WHOLE NUMBERS.

LEGEND

- ① SINGLE RECEPTACLE, 15 AMP, 120 VOLT
- WP-1 DUPLEX RECEPTACLE, 15 AMP, 120 VOLT
- GP-1 OR DUPLEX RECEPTACLE, 15 AMP, 120 VOLT
- P-1 TRANSFORMER, ONE TYPE
- NEW SAFETY SWITCH, 60 AMP
- PANEL "V"
- PANEL "V"
- PANEL "V"
- THUNDERSTORM, LINE VOLTAGE
- COMBINATION SWITCH
- JUNCTION BOX 400X200X10 TYPE E
- EXHAUST FAN WALL MTD, 120 VOLT
- ② AIR LAMP UNIT 800 WTD, 208 VOLT, 2 HP
- ③ TELECOMMUNICATIONS OUTLET

NO.	DESCRIPTION	DATE	BY	CHKD
1	RE-DESIGN	2020	W. J. BORDEN	W. J. BORDEN

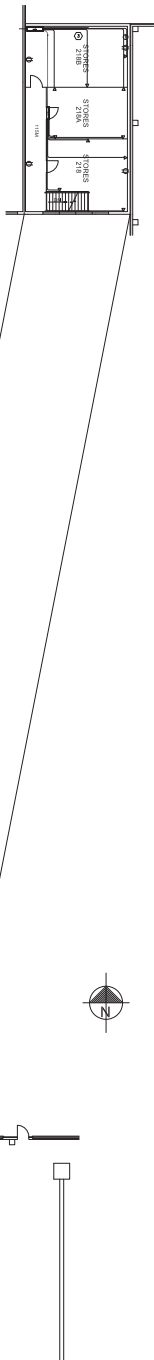
SCALE - EXIST  
AS SHOWN  
PROJECT LOCATION - LAMINGTON ST. ROAD  
CFB BORDEN

BLOS P-151

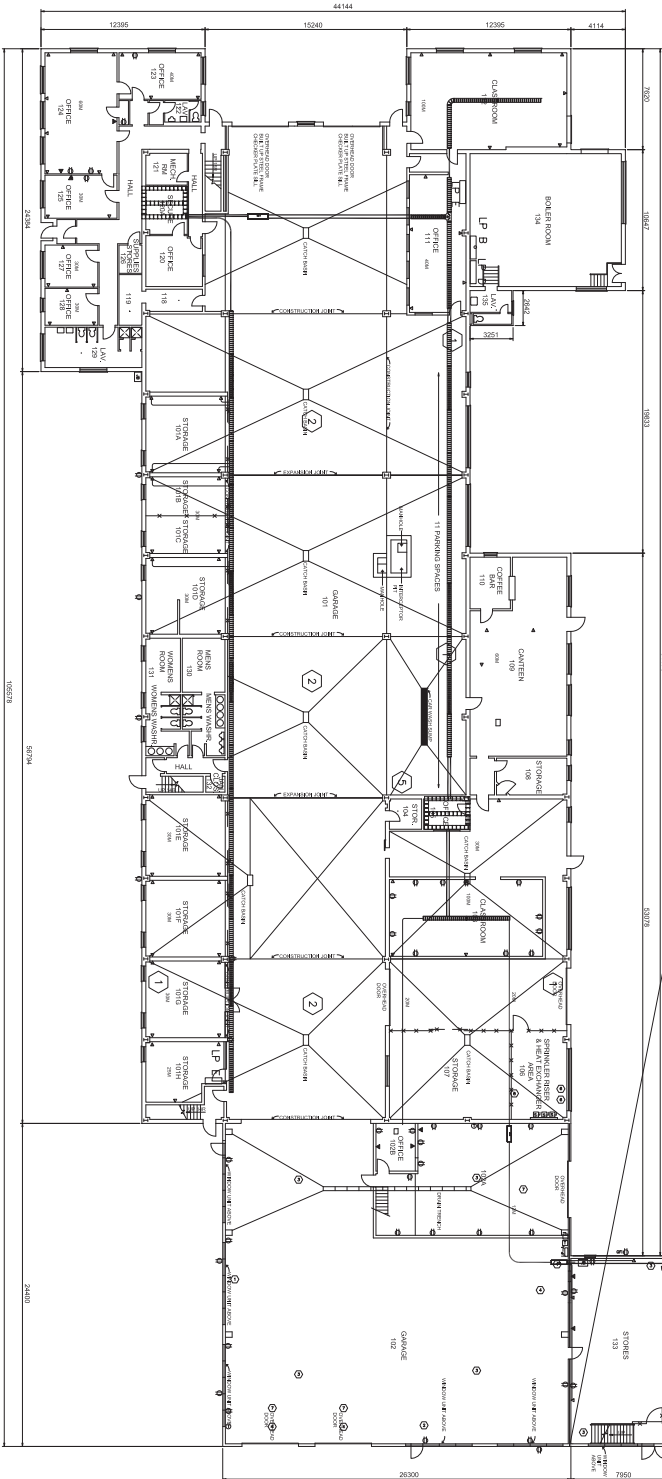
PF NO.  
ELECTRICAL  
DATE 09-07-10

POWER & TELECOMMUNICATIONS

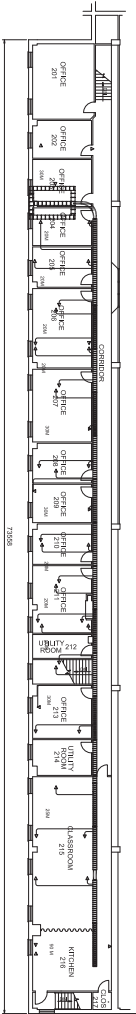
PRODUCTION	CONSTRUCTION - ASSISTANT
DESIGNED BY	W. J. BORDEN
CHECKED BY	W. J. BORDEN
DATE	2020
PROJECT NO.	2020-001
PROJECT NAME	POWER & TELECOMMUNICATIONS
PROJECT LOCATION	CFB BORDEN



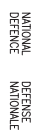
MEZZANINE FLOOR PLAN  
SCALE 1:150



GROUND FLOOR PLAN  
SCALE 1:150



MEZZANINE CORRIDOR PLAN  
SCALE 1:150

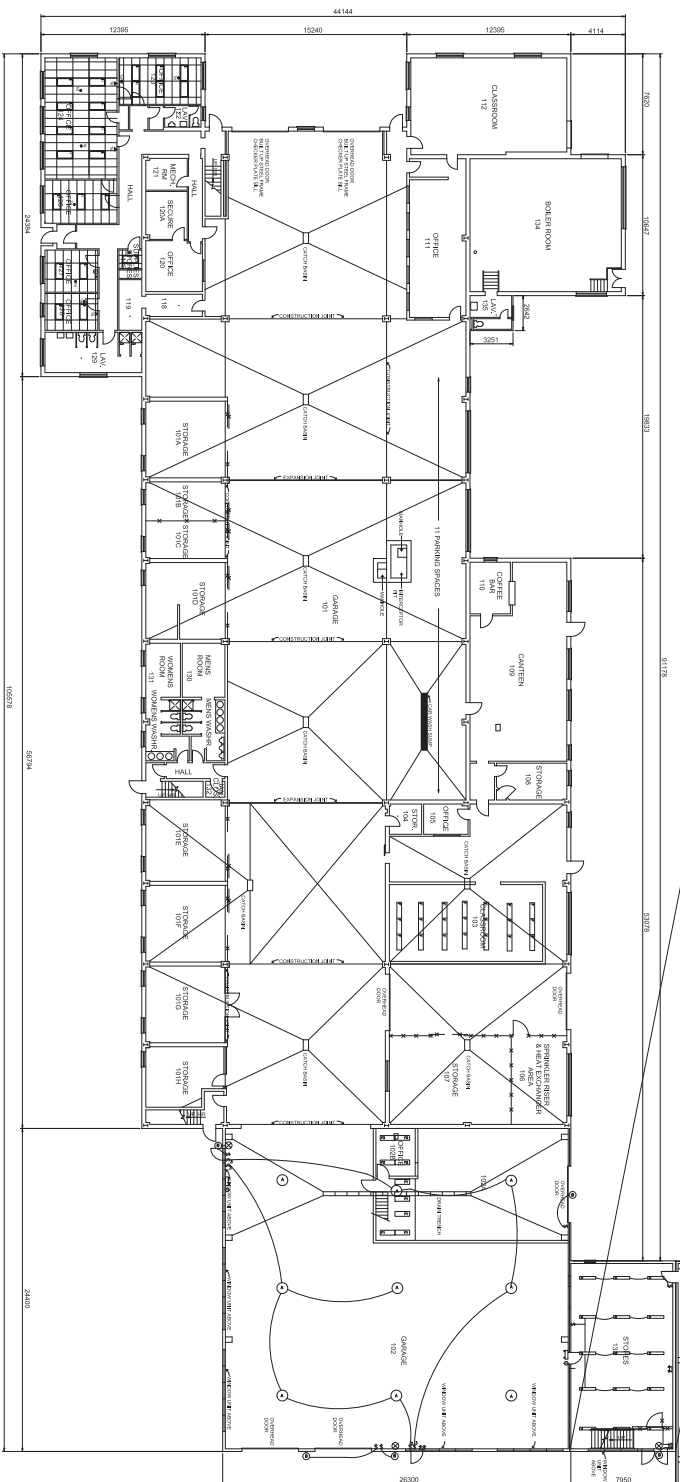
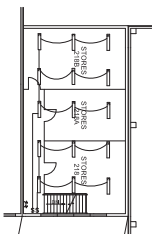


BASE CONSTRUCTION ENGINEERING OFFICE  
CFB BORDEN

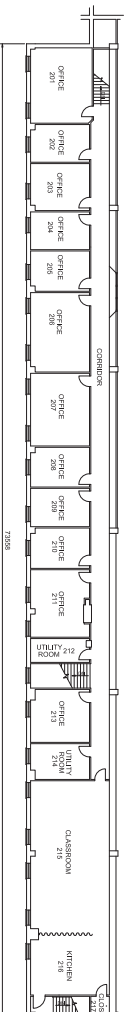
UPDATING REVISED FROM  
L-B147-2505/20-501 99-11-22

UPDATING REVISED FROM  
L-B147-2505/20-501 99-11-22

**MEZZANINE FLOOR PLAN**  
SCALE 1:150



GROUND FLOOR PLAN  
SCALE 1:150



**MEZZANINE FLOOR PLAN**  
SCALE 1:150

- ALL WIRE TYPES INVOKE ILLUMINATES.
- ALL WIRE TYPES EXPOSED TO THREE (3) FEET. SOAK TIME = 3048 MM.
- ALL EQUIVALENT ARE TO THE WIREST WOULD ILLUMINATE.

ELECTRICAL LEGEND

(A)	FLUORESC. W, 1P5, 400 WATT, 120 VOLT
(B)	FLUORESC. W, 1P5, 120 WATT, 120 VOLT
(C)	FLUORESC. W, 1P5, 120 WATT, 120 VOLT
(D)	FLUORESC. W, 1P5, 120 WATT, 120 VOLT
(E)	FLUORESC. W, 1P5, 120 WATT, 120 VOLT
(F)	FLUORESC. W, 1P5, 120 WATT, 120 VOLT
(G)	FLUORESC. W, 1P5, 120 WATT, 120 VOLT
(H)	FLUORESC. W, 1P5, 120 WATT, 120 VOLT
(I)	FLUORESC. W, 1P5, 120 WATT, 120 VOLT
(J)	FLUORESC. W, 1P5, 120 WATT, 120 VOLT
(K)	FLUORESC. W, 1P5, 120 WATT, 120 VOLT
(L)	FLUORESC. W, 1P5, 120 WATT, 120 VOLT
(M)	FLUORESC. W, 1P5, 120 WATT, 120 VOLT
(N)	FLUORESC. W, 1P5, 120 WATT, 120 VOLT
(O)	FLUORESC. W, 1P5, 120 WATT, 120 VOLT
(P)	FLUORESC. W, 1P5, 120 WATT, 120 VOLT
(Q)	FLUORESC. W, 1P5, 120 WATT, 120 VOLT
(R)	FLUORESC. W, 1P5, 120 WATT, 120 VOLT
(S)	FLUORESC. W, 1P5, 120 WATT, 120 VOLT
(T)	FLUORESC. W, 1P5, 120 WATT, 120 VOLT
(U)	FLUORESC. W, 1P5, 120 WATT, 120 VOLT
(V)	FLUORESC. W, 1P5, 120 WATT, 120 VOLT
(W)	FLUORESC. W, 1P5, 120 WATT, 120 VOLT
(X)	FLUORESC. W, 1P5, 120 WATT, 120 VOLT
(Y)	FLUORESC. W, 1P5, 120 WATT, 120 VOLT
(Z)	FLUORESC. W, 1P5, 120 WATT, 120 VOLT

1	Do-07-10	REVISED TO DATE							
2	DATE	REVISION							
		REVISION - REVISION							
SOLD - F0818		AS SUPPLD							
PROJECT LOCATION -		MEMPHIS IN SOUTH							
PROJECT - ROAD		OTB BORNDEN							
PF NO.		BLDG P-151							
TRAC - #839		ELECTRICAL		DATE		DO-07-10			
SUBJECT - SLAT		LIGHTING							
PRODUCTION		CONFORMANCE - ASSIGNMENT							
DESIGNED BY	APPROVED BY	ARCH		CEN		CEN			
DESIGNED BY	APPROVED BY	MTC		CEN		CEN			
DATE OF REV	DATE	REVISION NO.		DATE OF REV		APPROVED BY - APPROVED BY			
DATE									
PAC. NO.		L-8147-2505-501							
JOB		JOB							

