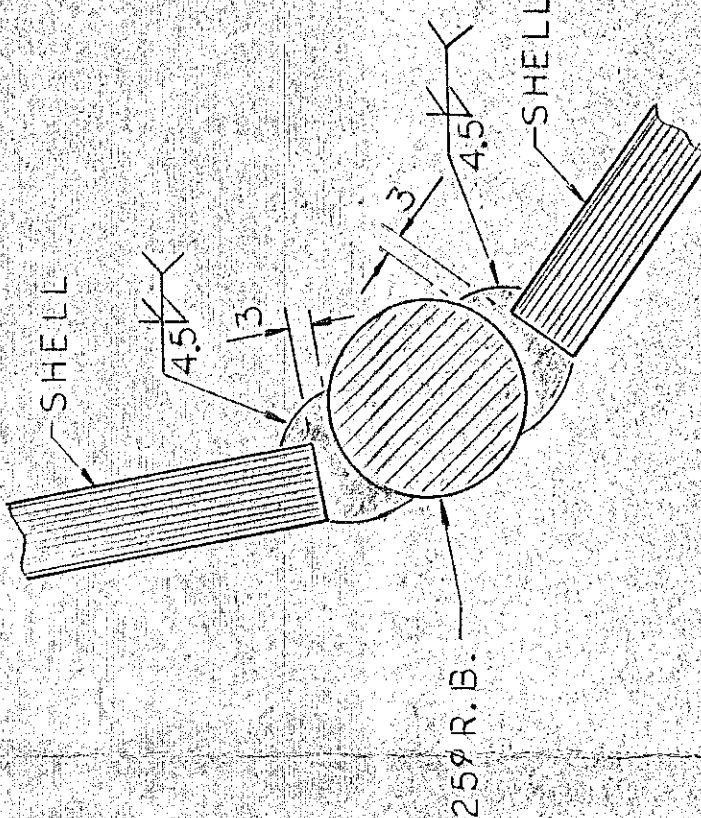
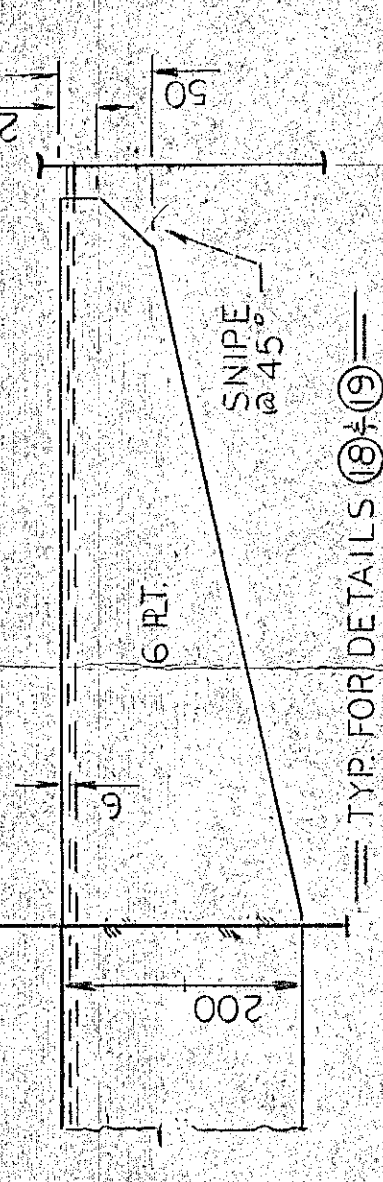


WELDING NOTES

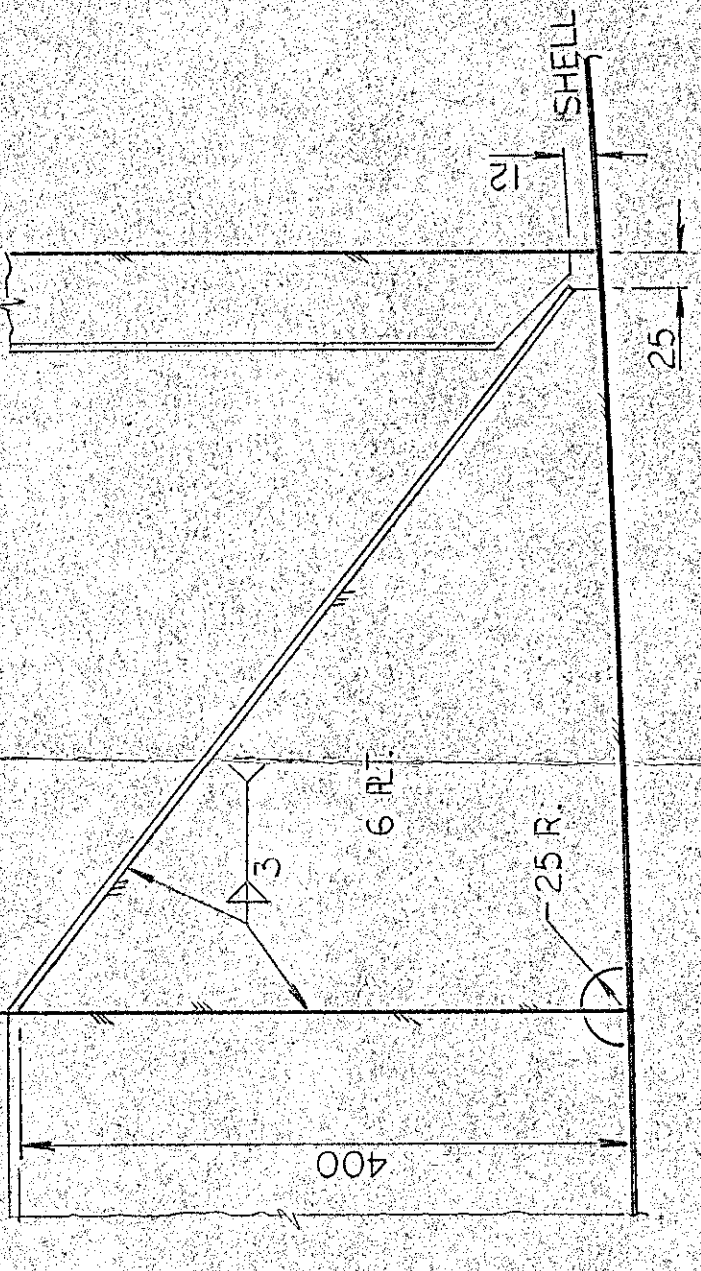
1. ALL BKTS. ARE WELDED.
2. ALL STIFFENERS WITHOUT END BKTS. ARE WELDED.
3. ALL STIFFENERS WITH END BKTS. ARE WELDED.
4. WHERE STIFFENERS ARE SLOTTED THRU. BULKHEADS, WEB FRGS, ETC. EACH SIDE OF THE CUT OUT SHOULD BE WELDED FOR 75MM WITH THE WELD BEING WRAPPED AROUND EDGE.
5. IN WAY OF ALL SCALLOPS WELD EACH SIDE FOR 75MM WITH THE WELD BEING WRAPPED AROUND EDGE.
6. ALL EXPOSED STRUCTURE IS WELDED.
7. ALL UNDER DECK STRUCTURE SUPPORTING HEAVY LOADS, I.E. MCHY. SEATS, IS WELDED.
8. ALL STRUCTURE IN WAY OF HATCH OPENINGS IS WELDED.
9. AT INTERSECTION OF WELDED STRUCTURE WELD FOR 150MM ON EACH INTERSECTING MEMBER LENGTH AT ENDS.
10. WELD SIZE GIVEN DENOTES THROAT THICKNESS.



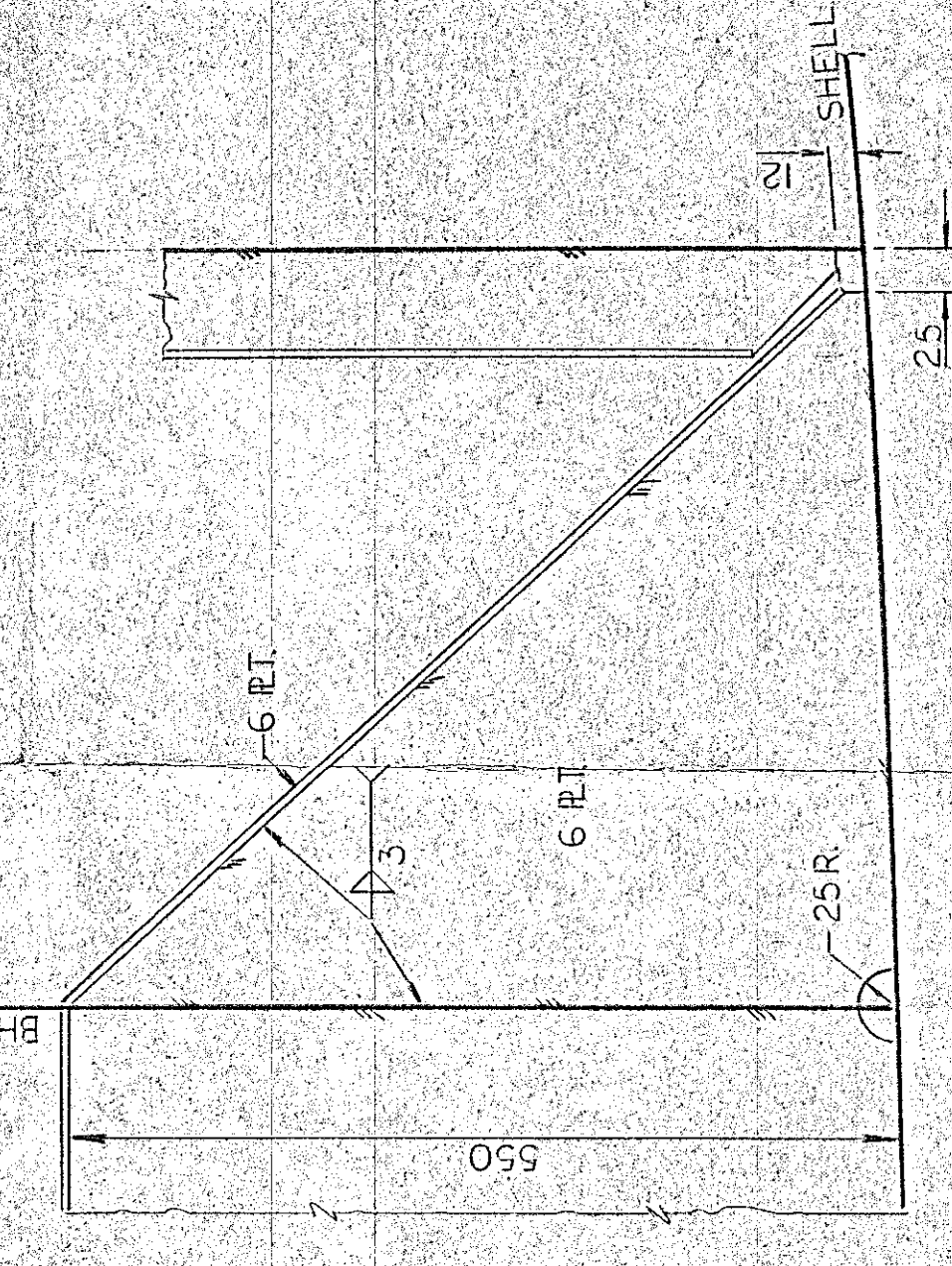
TYP. CHINE CONN.  
SCALE - P.S.



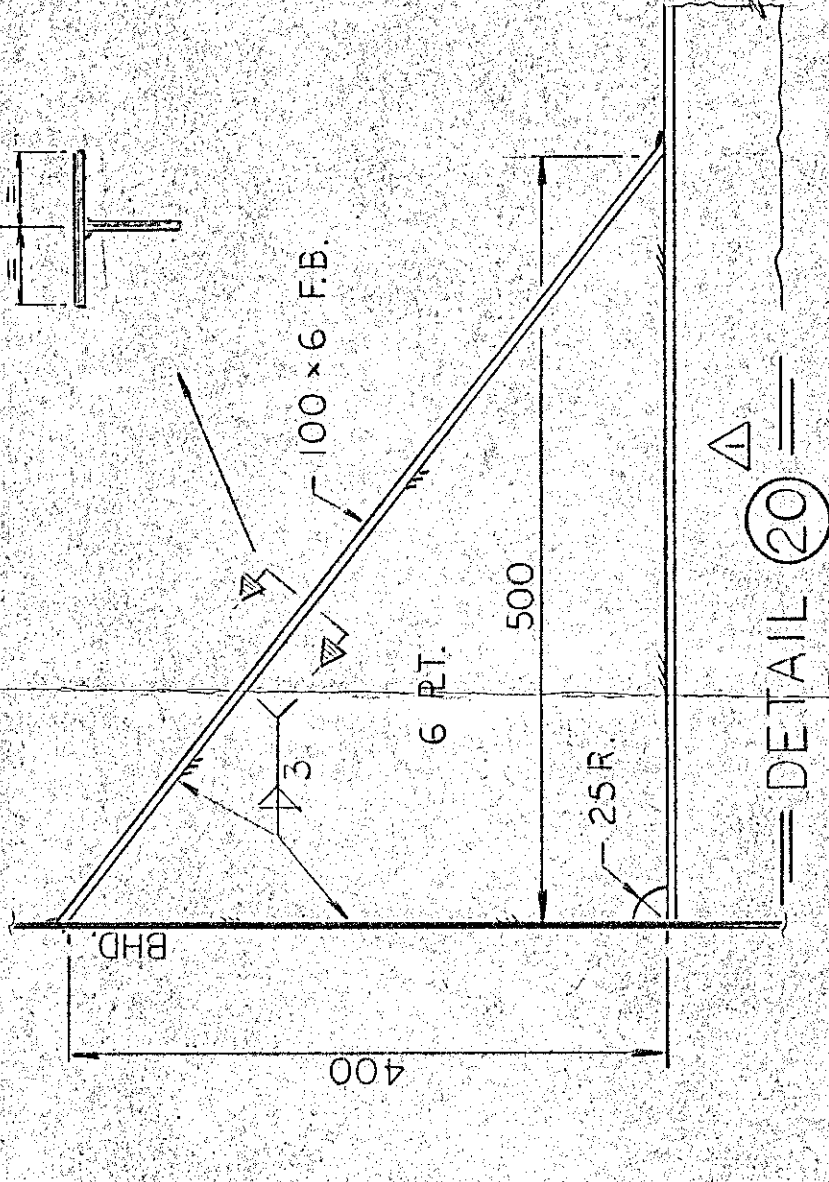
TYP FOR DETAILS 18 & 19



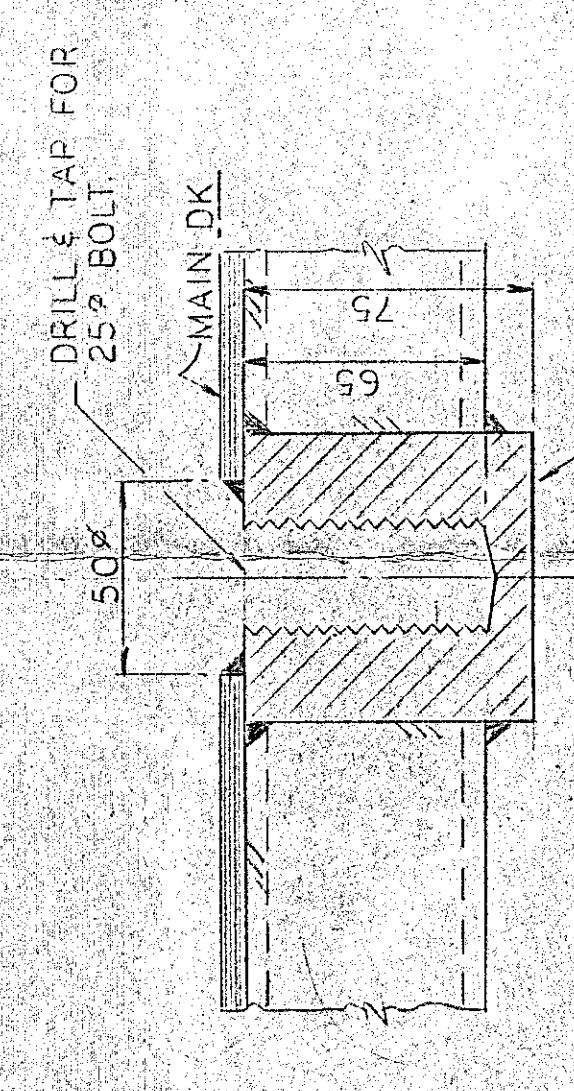
DETAIL 18  
SCALE - 1:5



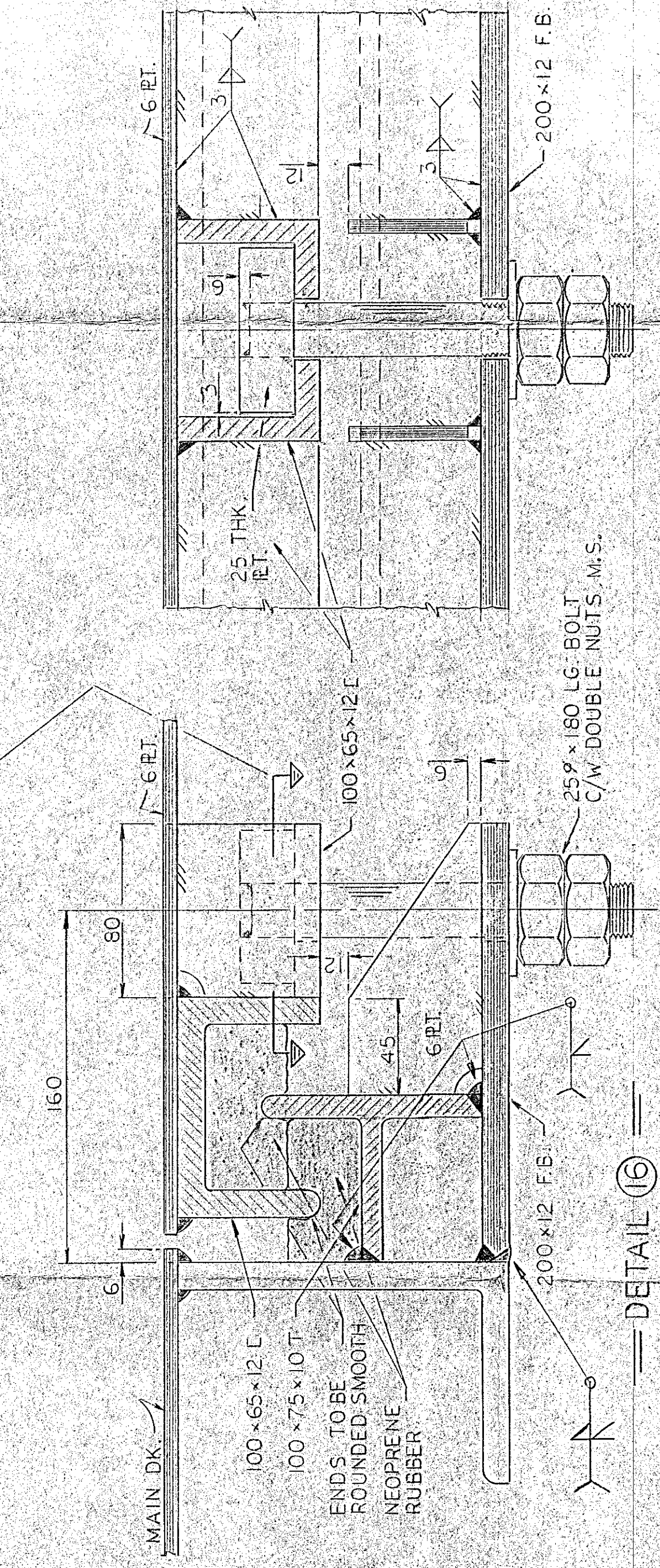
DETAIL 19  
SCALE - 1:5



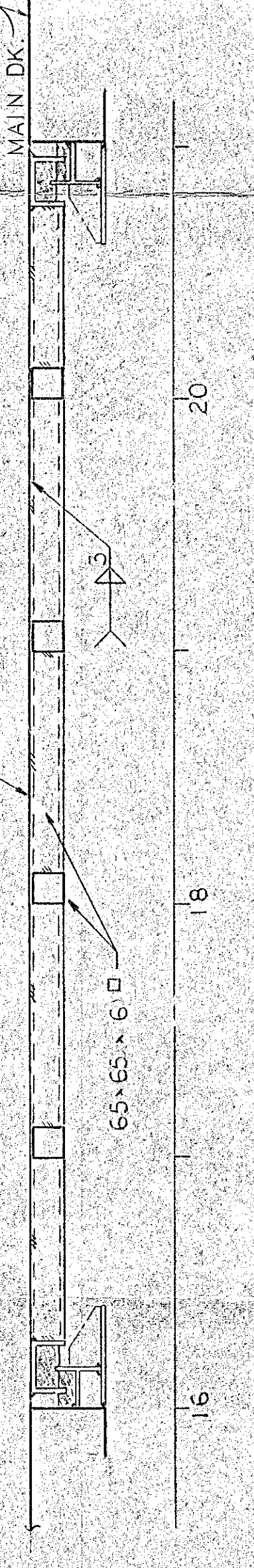
DETAIL 20  
SCALE - 1:5



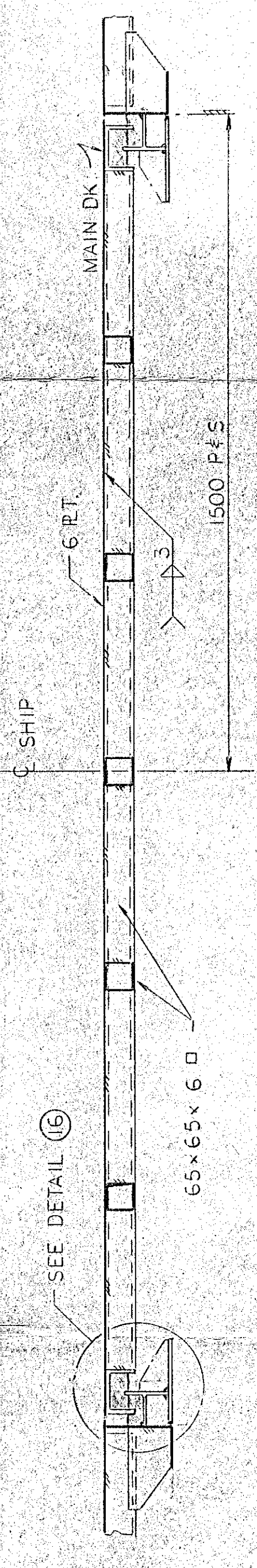
DETAIL 17 4 REQ.  
SCALE - 1:2



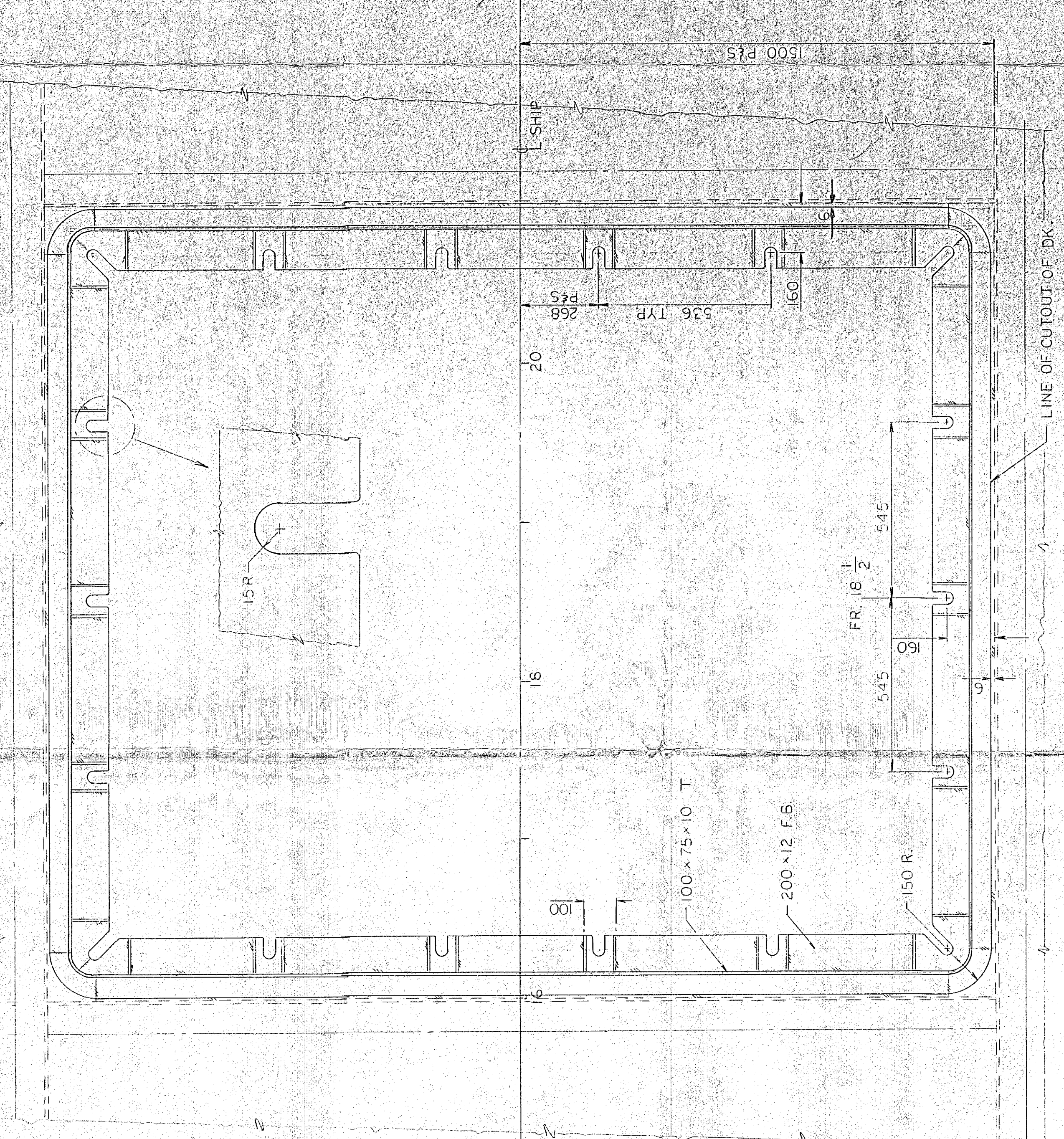
DETAIL 16  
SCALE - 1:2



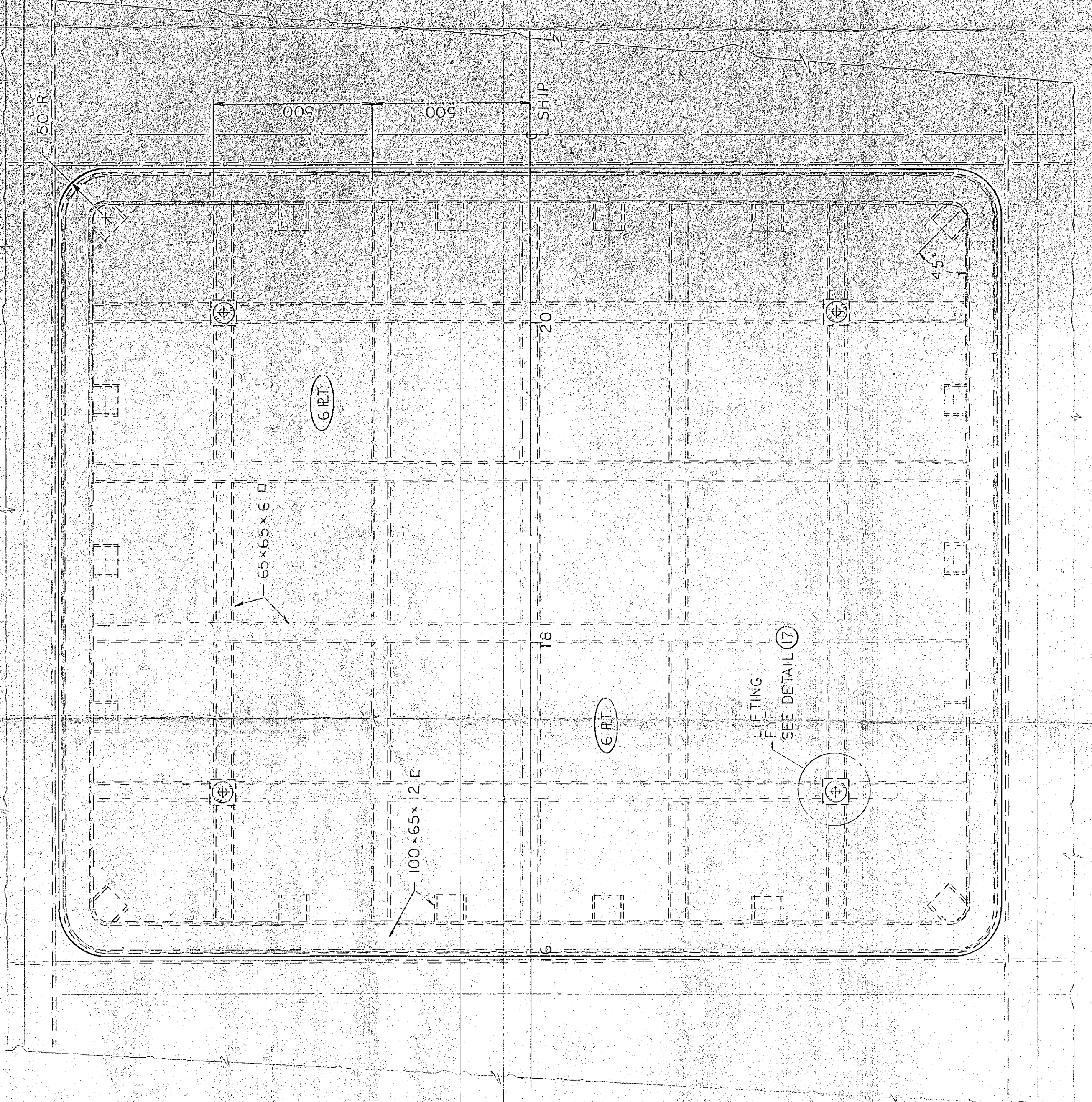
ELEVATION ON 1  
SCALE - 1:25



SECTION 18  
LOOKING FWD.  
SCALE - 1:25



DETAIL OF DK. OPENING  
SCALE - 1:10



DETAIL OF PORTABLE P.T.  
SCALE - 1:10

FOR MATERIAL REQUIREMENTS AND SPECIFICATIONS  
SEE SEPARATE "BILL OF MATERIAL" FOR THIS DRAWING.  
DO NOT SCALE DRAWING IF IN DOUBT ASK DRAWING  
OFFICE.

PRINCIPAL PARTICULARS  
LENGTH O.A. 24.50 M  
LENGTH B.P. 22.00 M  
BEAM MLD. 7.50 M  
DEPTH TO MK. DECK 3.60 M  
DRAUGHT (GANTLING) 2.20 M

CLASSIFICATION  
C.S.I. - HOME TRADE II (UNRESTRICTED)  
- LIFESAVING CLASS X  
- FIRE PROTECTION CLASS H  
A.B.S. - RULES FOR BUILDING AND CLASSING  
STEEL VESSELS UNDER 61 METERS  
IN LENGTH

ITEM	DRG. No.	REFERENCE	DRAWINGS	TITLE

Rev. No.	Appr. / Date	Revisions	Date

GEORGETOWN SHIPYARD INC.  
GEORGETOWN P.E.I.  
Canadian Coast Guard  
Garde côtière  
canadienne

TYPE 200 ICE STRENGTHENED SEARCH  
8 RESCUE VESSEL  
UNIT 3  
STRUCTURAL DETAILS  
(FR 12 TO FR 25)  
(AS FITTED)

Date: FEB/86  
Project: 4647-100-6  
Sheet: 5 of 5  
Preliminary  
This drawing is for production