

FOR MATERIAL REQUIREMENTS AND SPECIFICATIONS
SEE SEPARATE "BILL OF MATERIAL" FOR THIS DRAWING
DO NOT SCALE DRAWING IF IN DOUBT ASK DRAWING
OFFICE

PRINCIPAL PARTICULARS

LENGTH O.A.	24.50 M
LENGTH B.P.	22.00 M
BEAM MLD.	7.50 M
DEPTH TO MN. DECK	3.60 M
DRAUGHT (SCANTLING) 250 M	

CLASSIFICATION

- C.S.I. - HONE TRADE II (UNRESTRICTED)
- LIFESAVING CLASS X
- FIRE PROTECTION CLASS H
- A.B.S. - RULES FOR BUILDING AND CLASSING STEEL VESSELS UNDER 61 METERS IN LENGTH

REFERENCE DRAWINGS

ITEM	DRG. No.	TITLE

Revisions

Rev. No.	Date	By	App'd.
1			
2			
3			
4			
5			

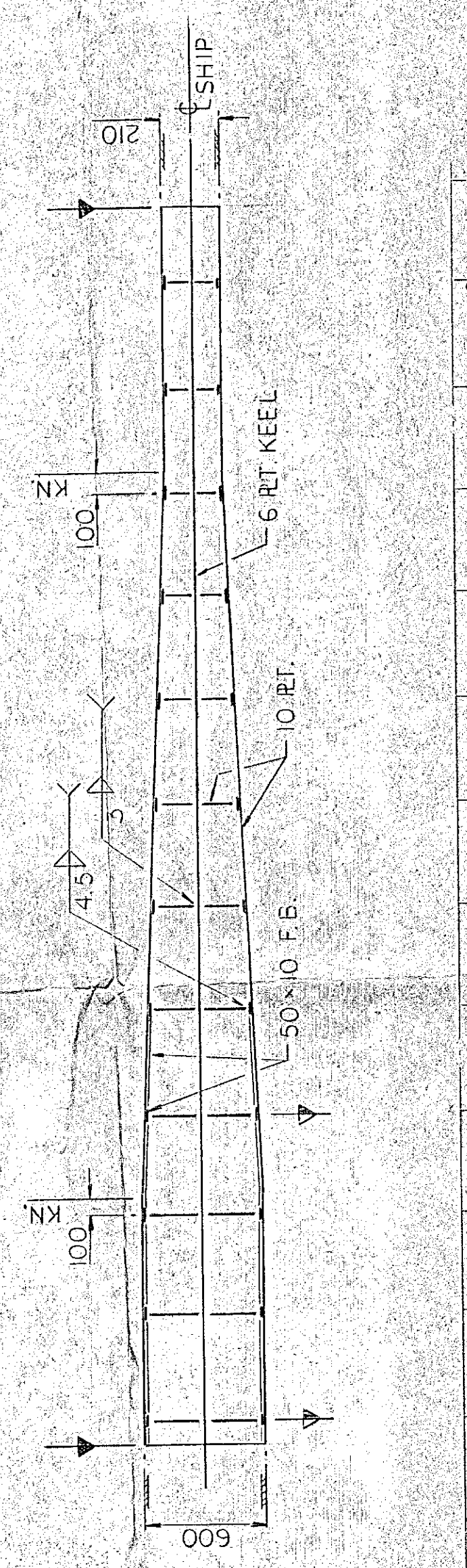
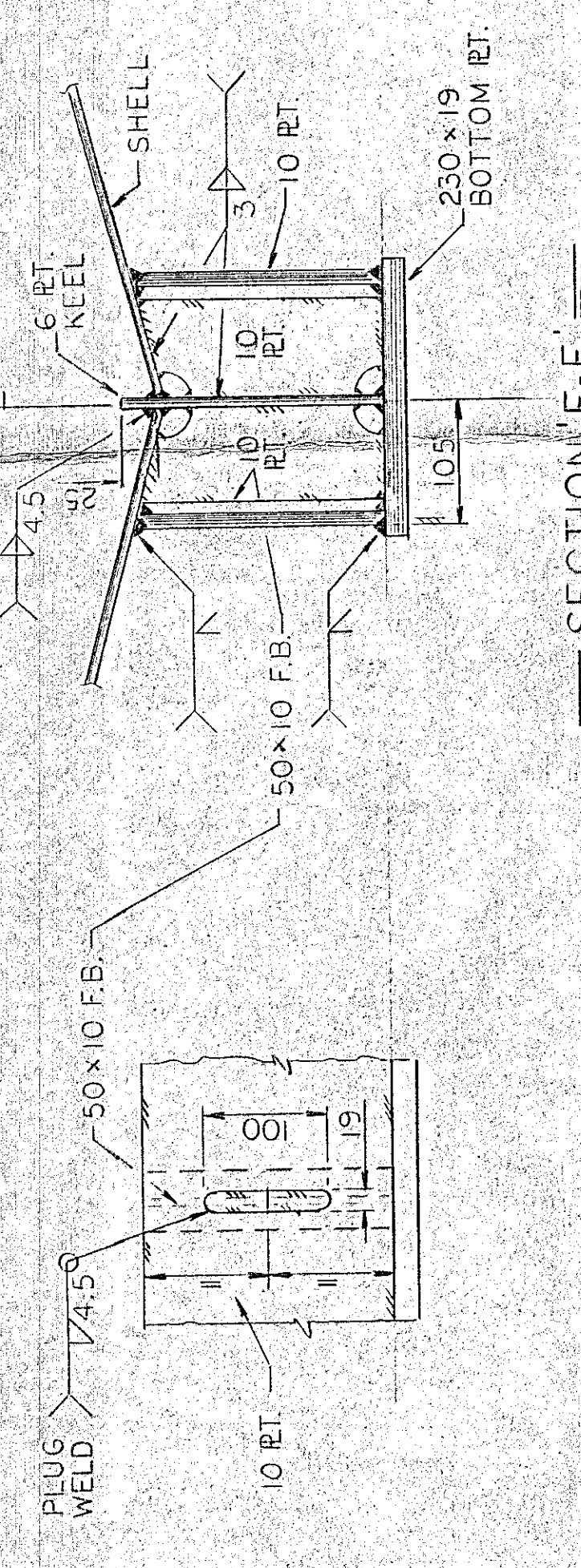
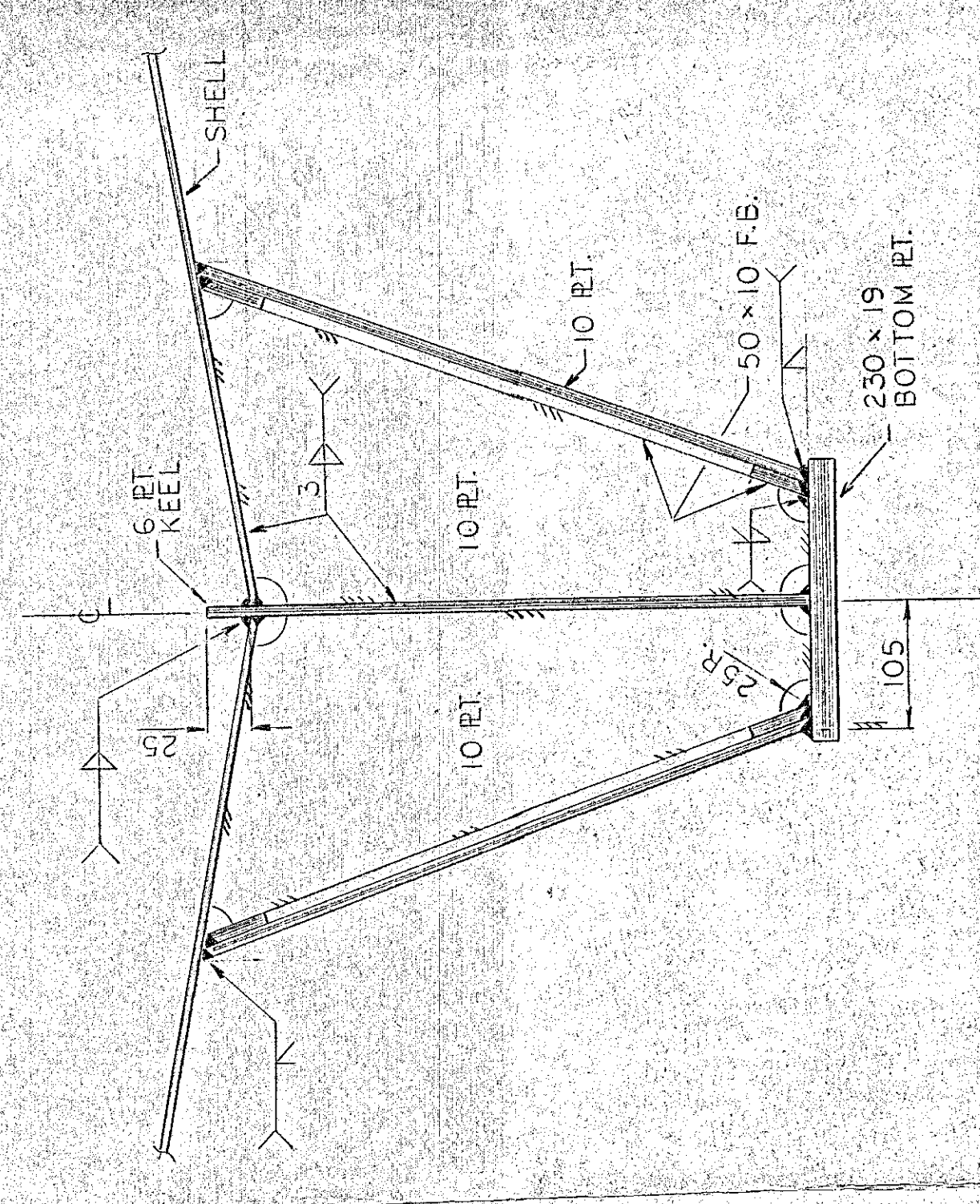
GEORGETOWN SHIPYARD INC.
GEORGETOWN, P.E.I.

Canadian
Coast Guard
canadienne

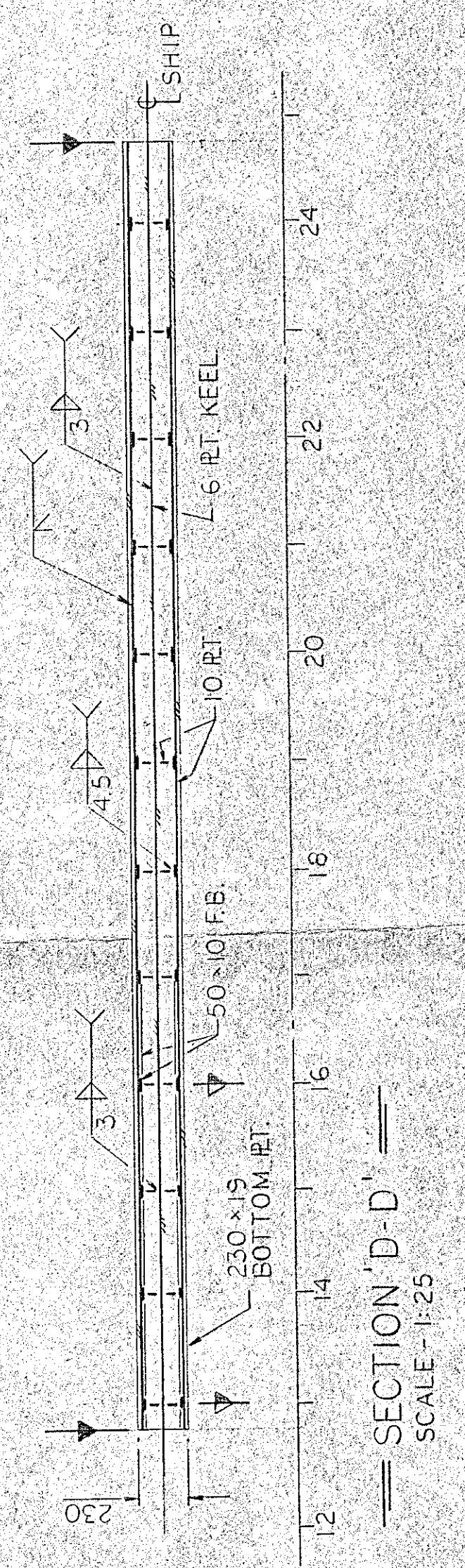
Vessel Name: TYPE 200 ICE STRENGTHENED SEARCH & RESCUE VESSEL
Date: 11-10-03
Unit: 3
Structural Details (FR 12 TO FR 25) (AS FITTED)

Drawn: FEB/86
Checked: AS NOTED
Contractor: No. 4647-100-6
SHT 4 OF 5

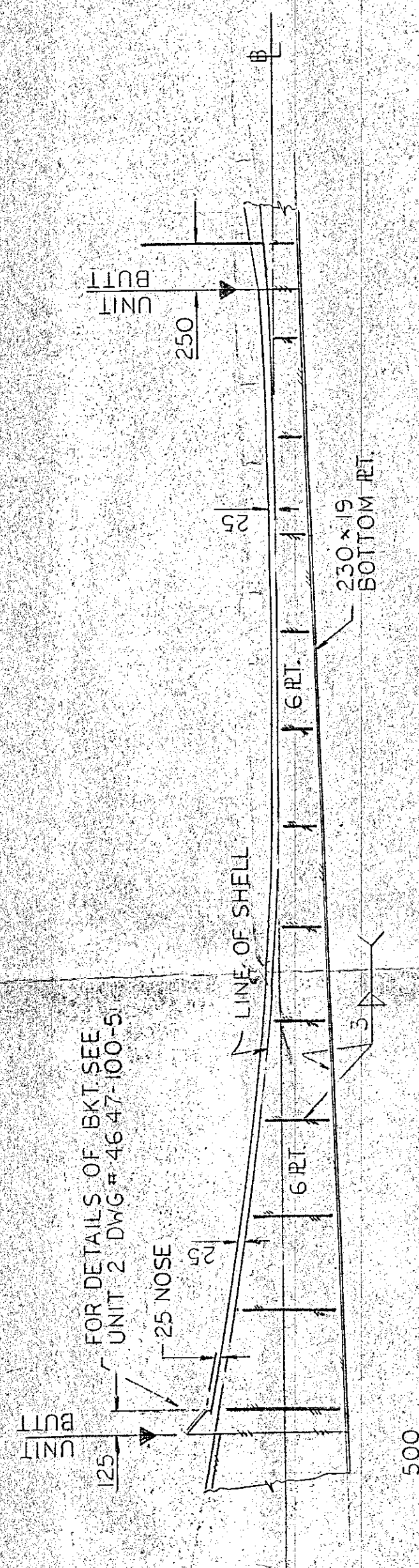
- NOTE - ALL PLUG WELDS ARE FILLED
FINISHED SMOOTH AFTER TESTING.



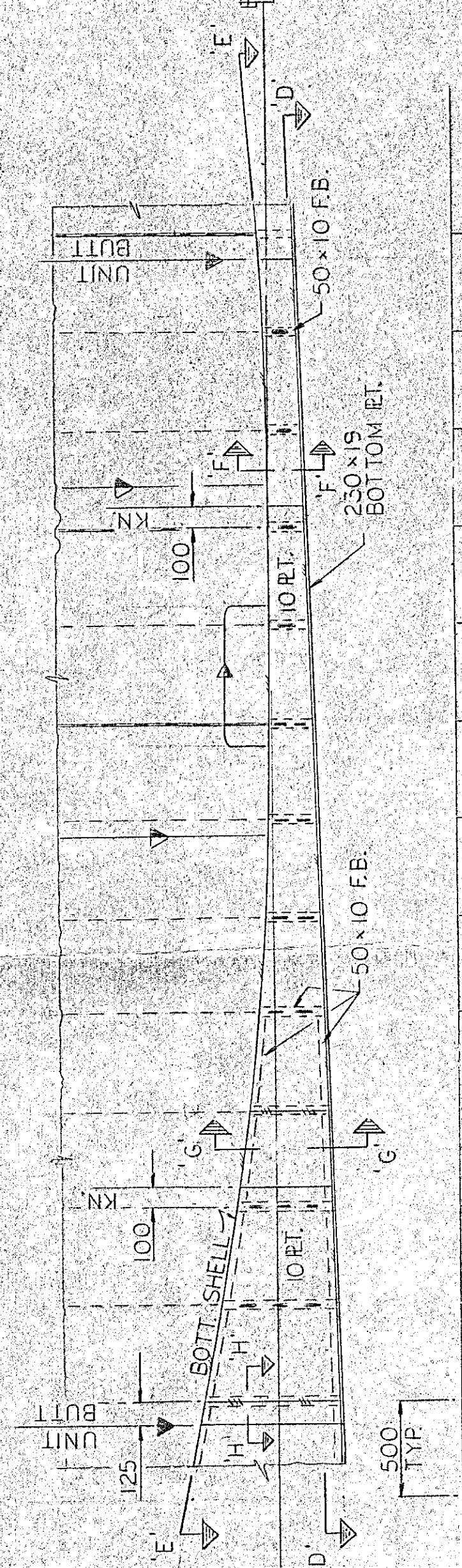
SECTION 'E-E' SCALE - 1:25



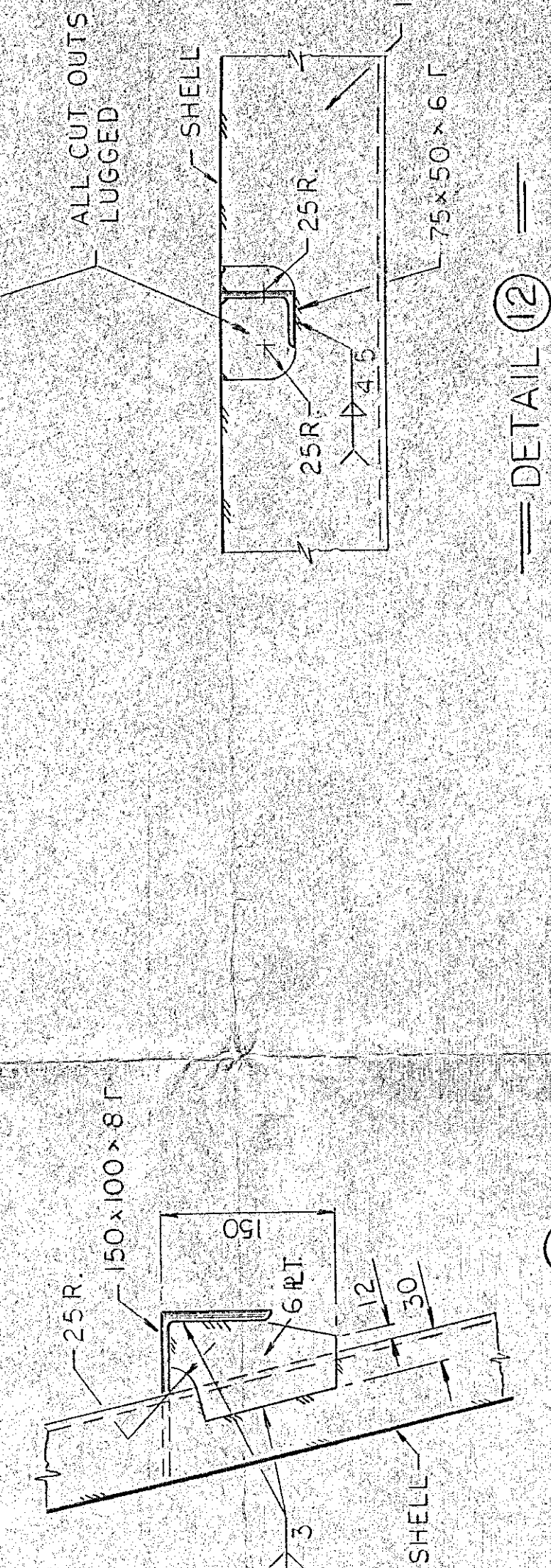
SECTION 'D-D' SCALE - 1:25



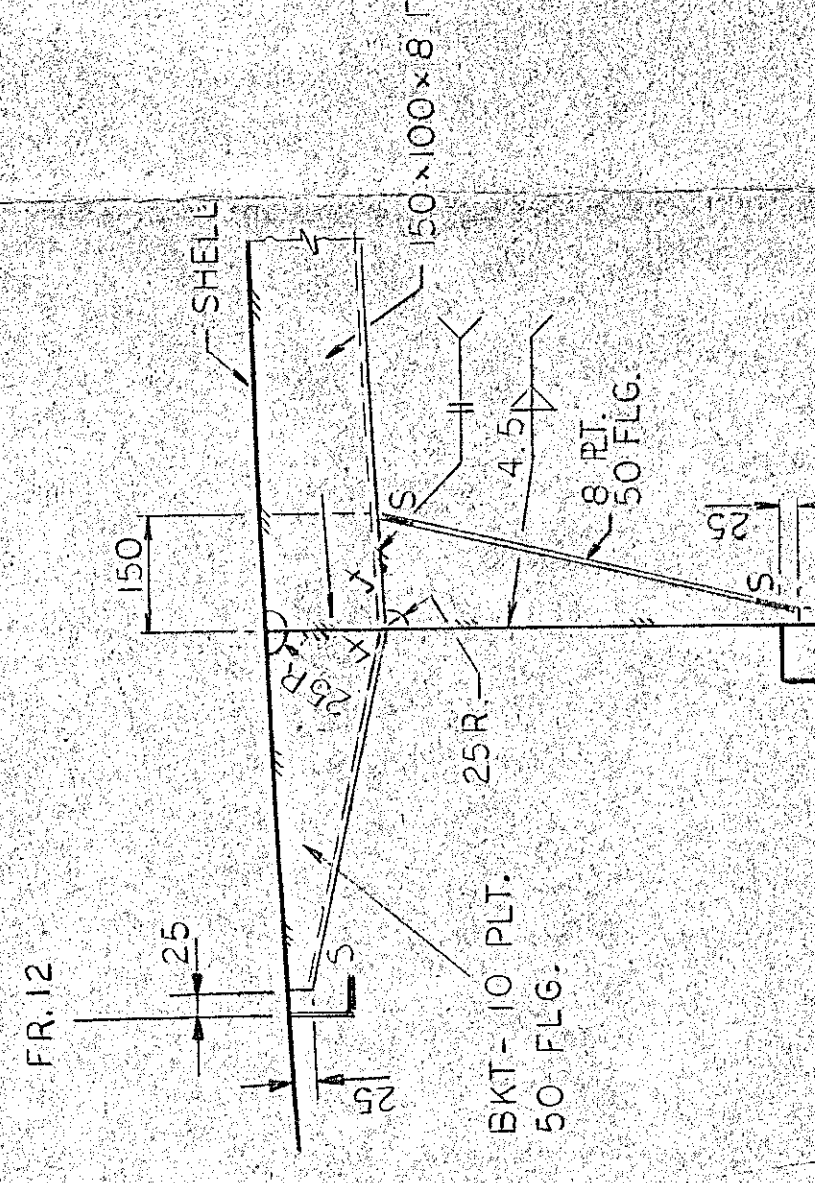
ELEVATION @ CL LOOKING OUTBD. SCALE - 1:25



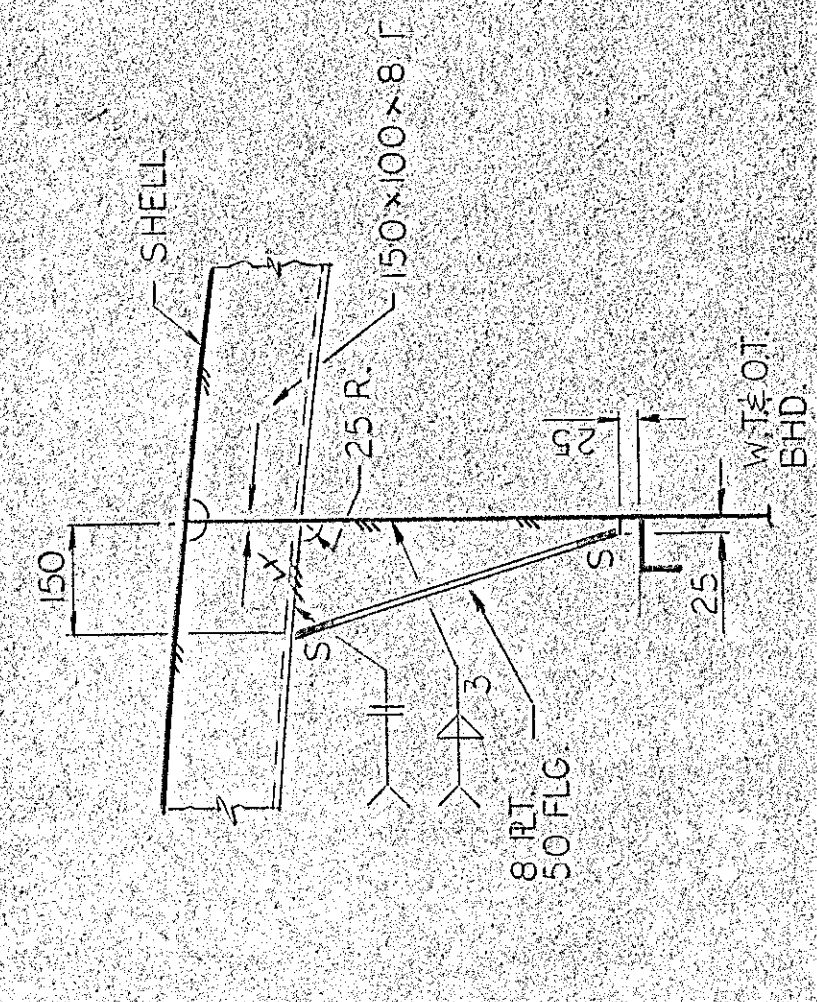
ELEVATION OF SKEG LOOKING INBD. SCALE - 1:25



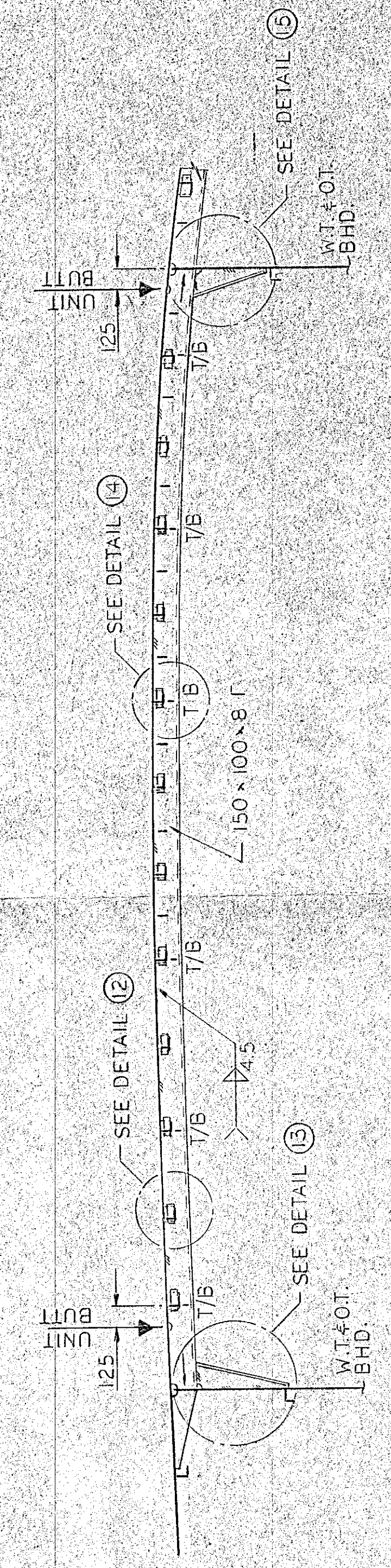
DETAIL 12 SCALE - 1:5



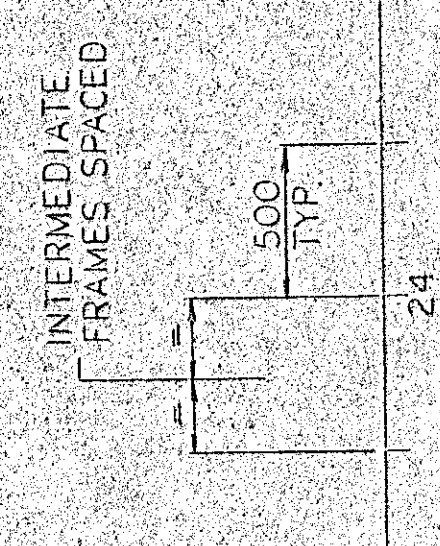
DETAIL 13 SCALE - 1:10



DETAIL 14 SCALE - 1:10



DETAIL 15 SCALE - 1:10



PLAN AT SHELL STRINGER 2200 A/B PT SIDE SHOWN, STBD. SIMILAR BUT TO OPPOSITE HAND SCALE - 1:25