

FOR MATERIAL REQUIREMENTS AND SPECIFICATIONS  
SEE SEPARATE "BILL OF MATERIAL" FOR THIS DRAWING.  
-DO NOT SCALE DRAWING IF IN DOUBT ASK DRAWING  
OFFICE.

PRINCIPAL PARTICULARS  
LENGTH O.A. 24.50 M  
LENGTH B.P. 22.00 M  
BEAM WLD. 7.50 M  
DEPTH TO MAIN DECK 3.60 M  
DRAUGHT (SCANTLING) 2.50 M

CLASSIFICATION

C.S.I. - HOME TRADE II (UNRESTRICTED)  
- LIFESAVING CLASS X  
- FIRE PROTECTION CLASS H

A.B.S. - RULES FOR BUILDING AND CLASING  
STEEL HULLS UNDER 6 METERS  
IN LENGTH.

ITEM	DWG. No.	REFERENCE	DRAWINGS	TITLE

Rev. No.	Revisions	Date
1	A.B.S. OWNERS C.S.I.	
2	18-12-85 18-1-86	
3	18-1-86	

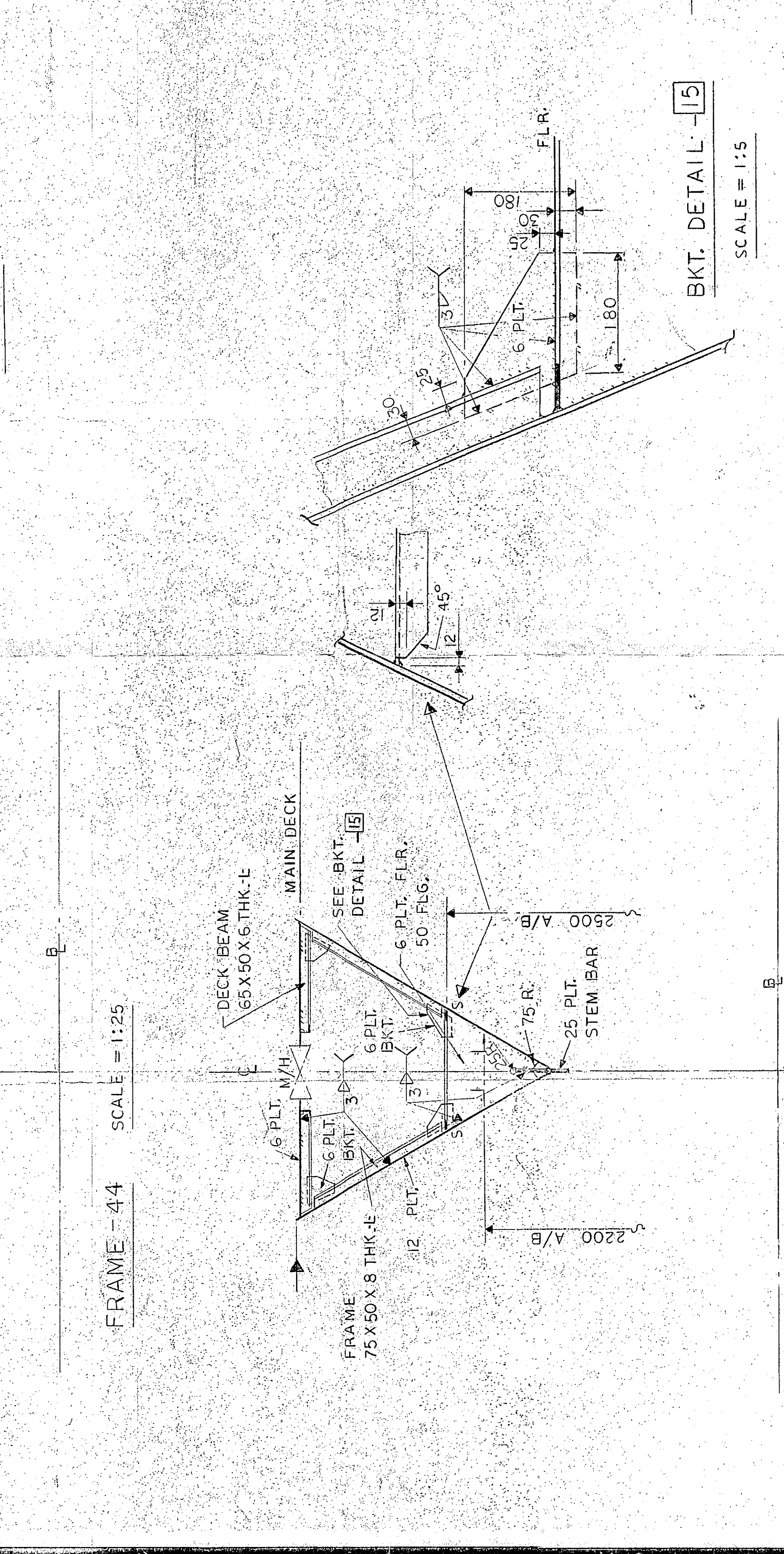
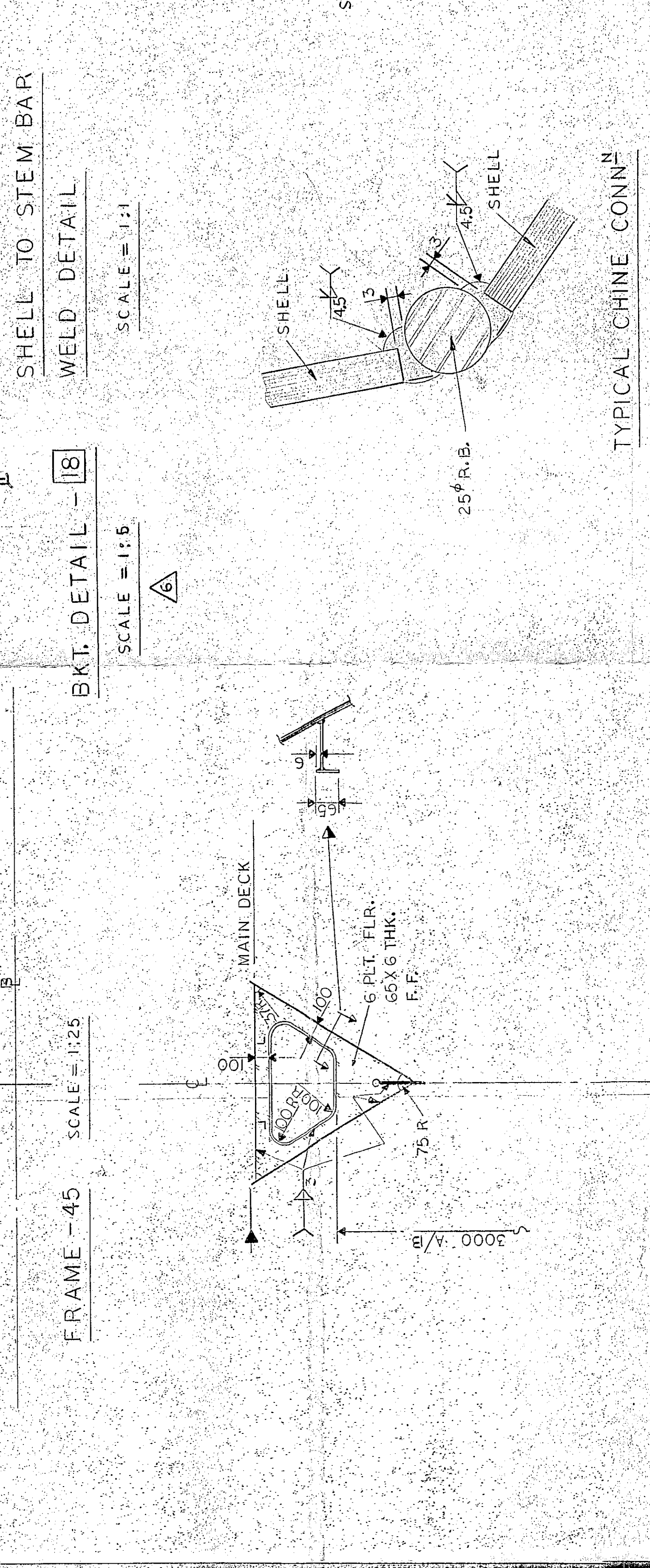
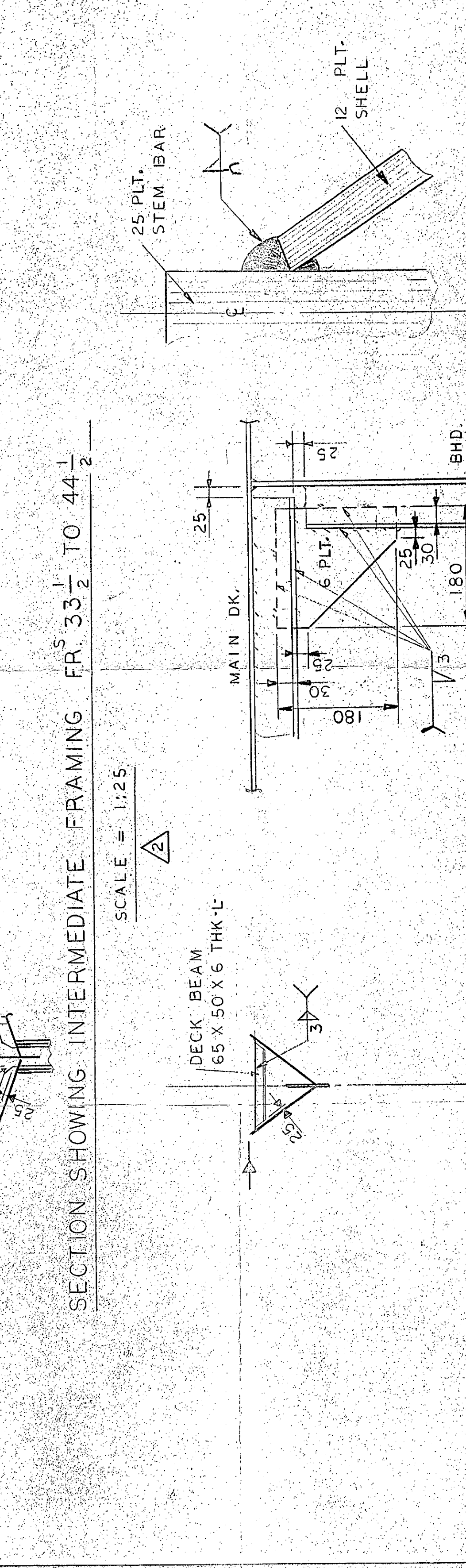
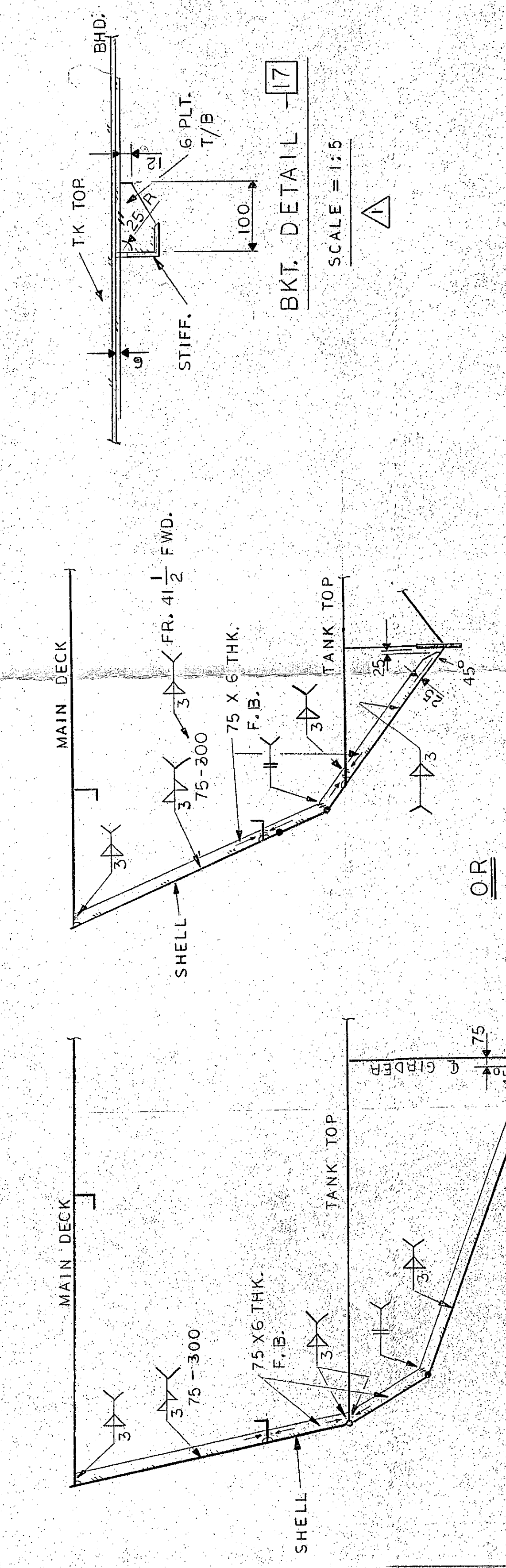
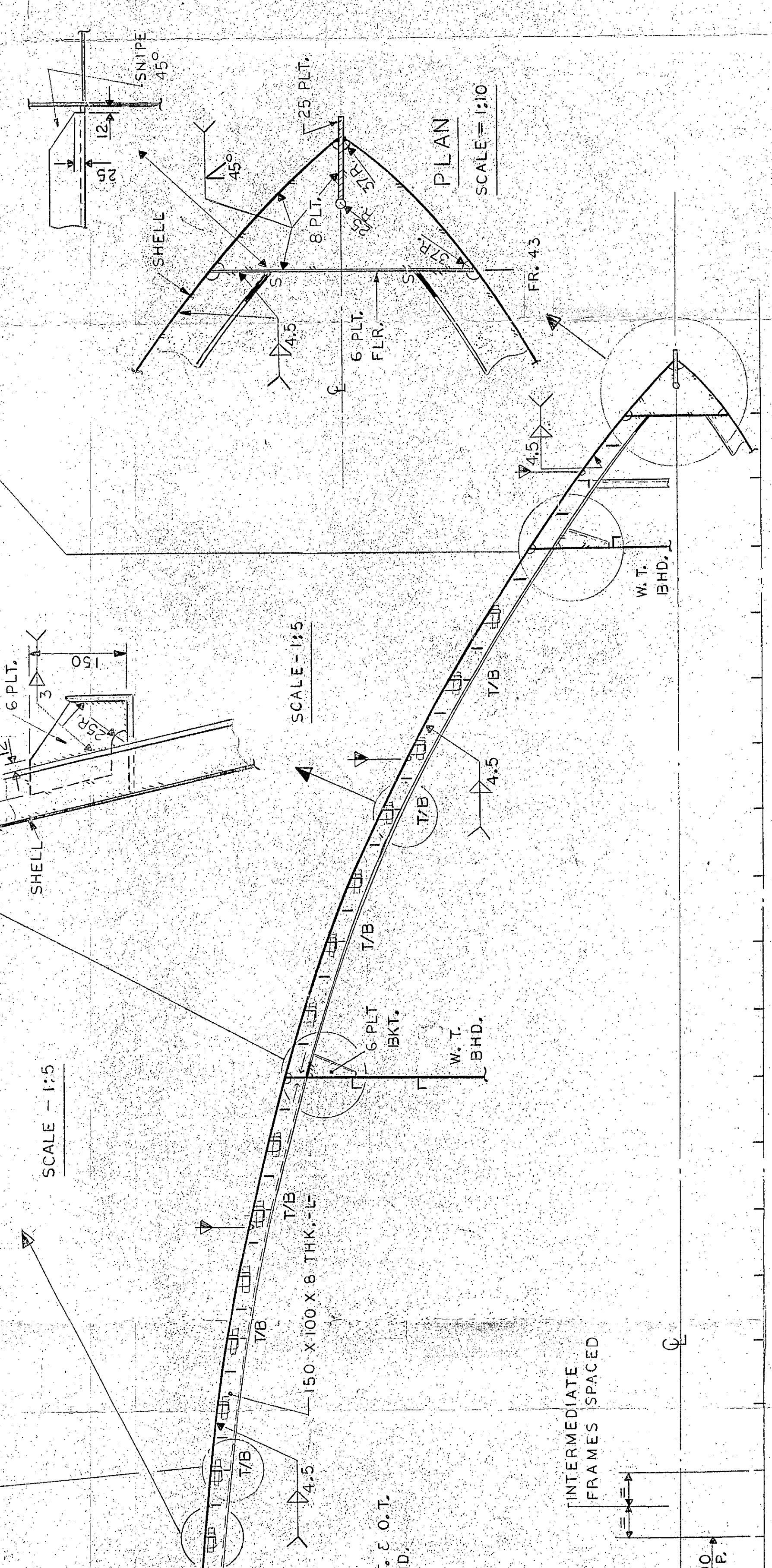
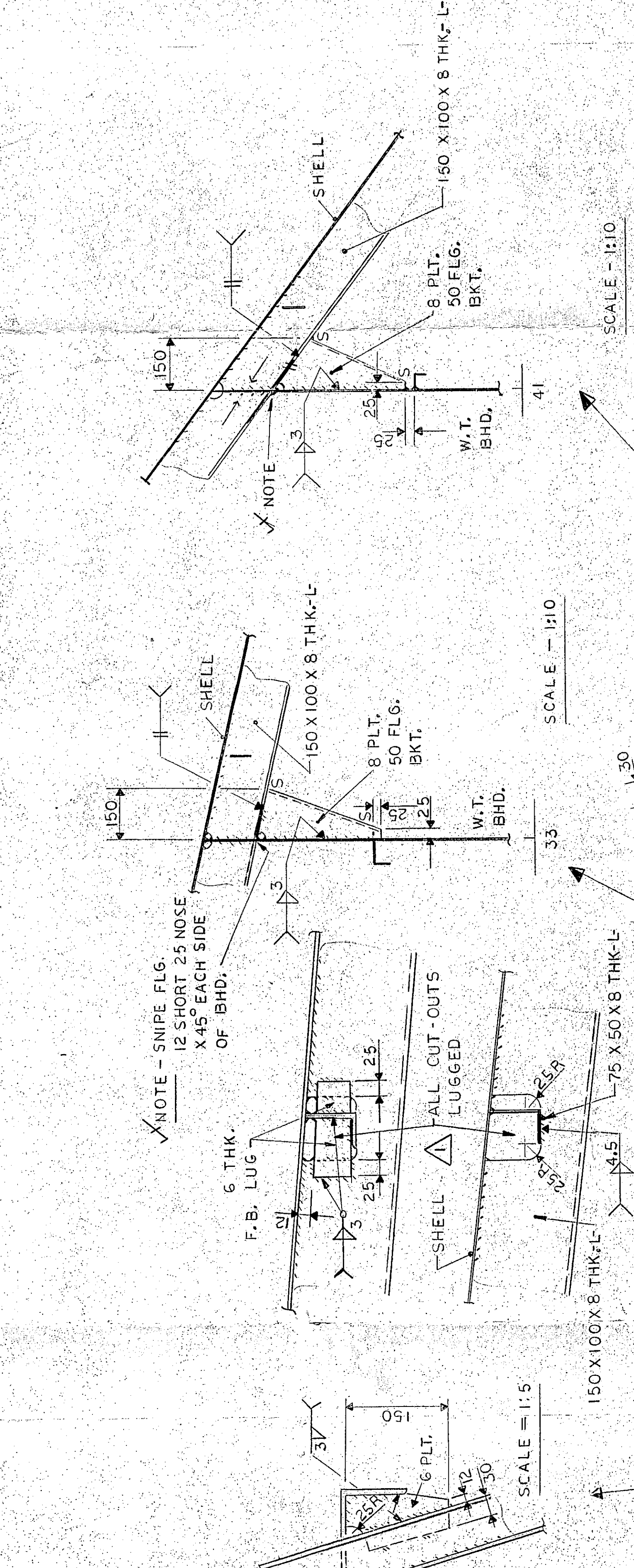
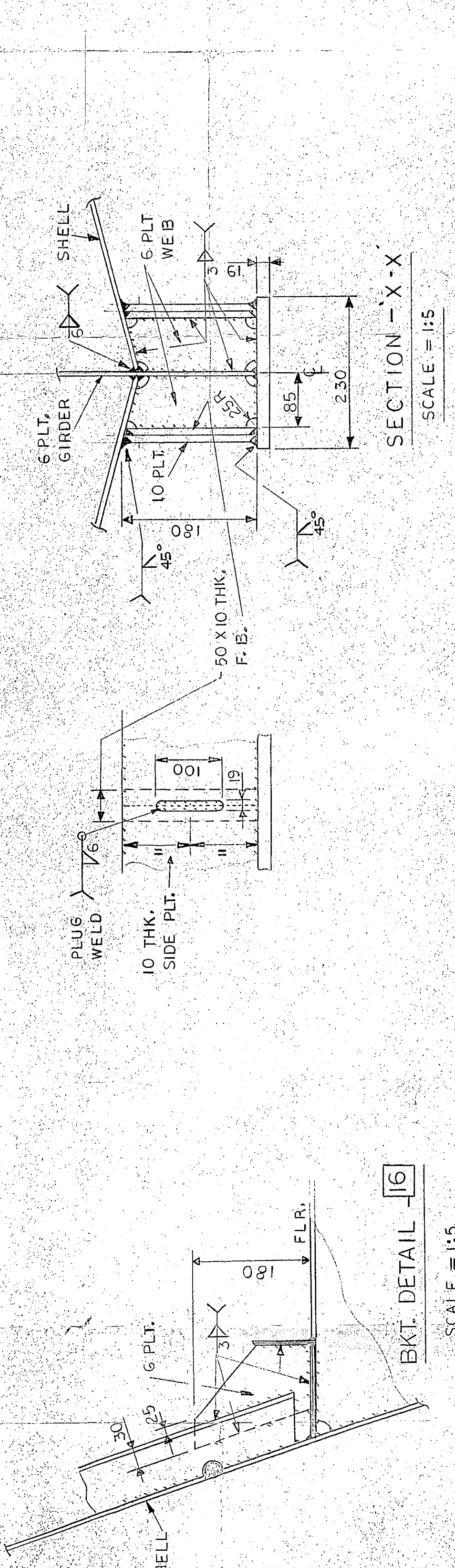
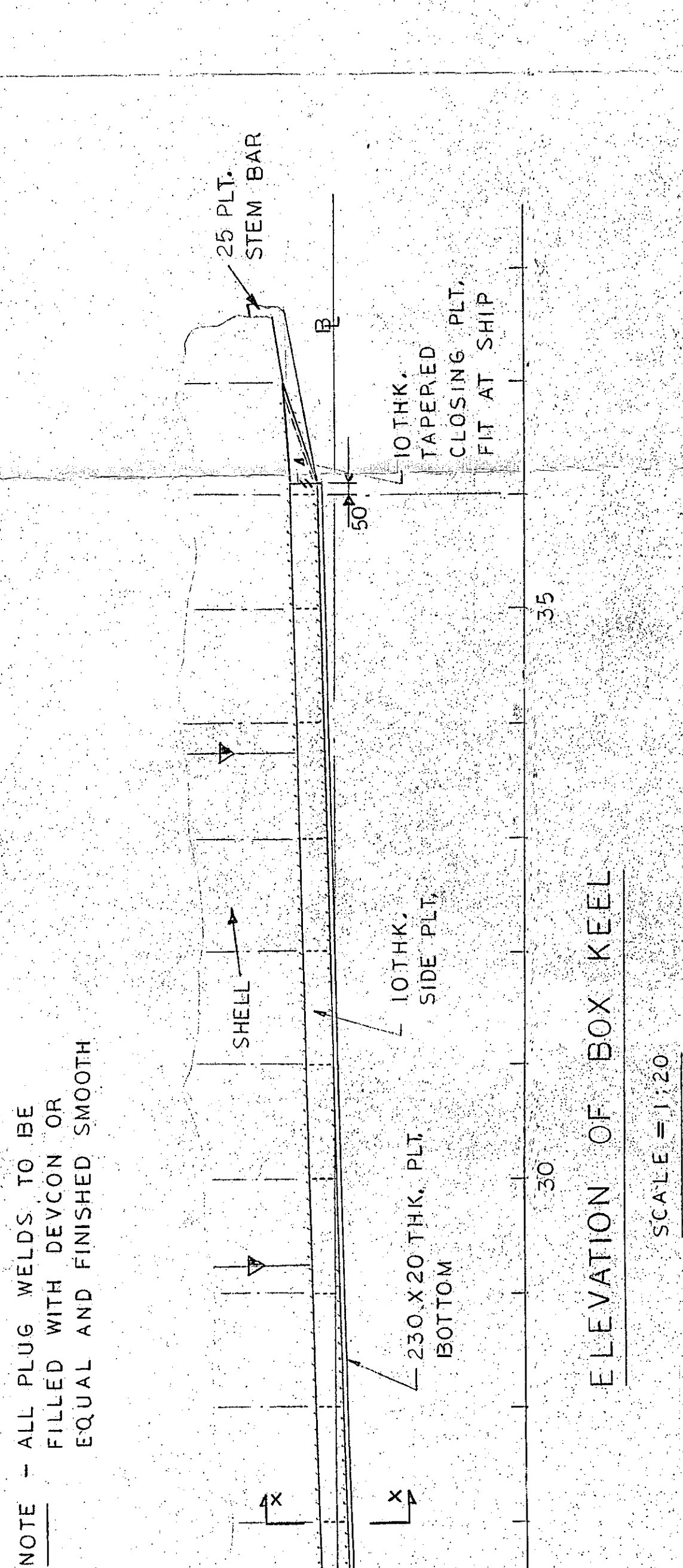
Contractor  
GEORGETOWN SHIPYARD INC.  
Georgetown P.E.I.

Canadian  
Coast Guard  
canadienne

Vessel  
TYPE 200 ICE STRENGTHENED SEARCH  
& RESCUE VESSEL

UNIT #1  
STRUCTURAL DETAILS  
F.R. 25 FWD.  
(AS FITTED)

DATE 12-85	Scale 1:25	AS NOTED	Rev.
12-85	12-85	12-85	12-85



PLAN AT SHELL STRINGER 2200 A/B

PORT SIDE SHOWN, STS. SIDE SIMILAR BUT OPPOSITE HAND

SCALE = 1:25

FRAME - 43

SCALE = 1:25