

FOR MATERIAL REQUIREMENTS AND SPECIFICATIONS SEE  
SEPARATE "BILL OF MATERIALS" FOR THIS DRAWING.  
DO NOT SCALE DRAWING IF IN DOUBT ASK DRAWING OFFICE.

PRINCIPAL PARTICULARS

LENGTH O.A. 24.50 M  
LENGTH B.P. 22.00 M  
BEAM MLD. 7.50 M  
DEPTH TO MN. DECK 3.60 M  
DRAUGHT (SCANTLING) 2.50 M

CLASSIFICATION

C.S.I.  
— HOME TRADE 2 (UNRESTRICTED)  
— CLASSIFICATION CLASS H  
— FIRE PROTECTION CLASS H

A.B.S.  
— RULES FOR BUILDING AND CLASSING  
STEEL VESSELS UNDER 61 METERS  
IN LENGTH.

REF. No. 4647-200-23  
TITLE  
BILGE AND BALLAST  
ARRANGEMENT

Rev. No. 1  
Date 24/02/86  
Rev. No. 2  
Date 19/02/86  
Rev. No. 3  
Date 17/03/86

OWNERS C.S.I. A.B.S.  
Georgetown Shipyard Inc.  
Georgetown P.E.I.

Canadian Coast Guard  
canadienne

C.C.G.S. HOOD  
TYPE 200 ICE STRENGTHENED SEARCH AND RESCUE VESSEL

Bill of Materials  
Date 05/02/86  
Scale 1:25  
Sheet 1 of 2

LEGEND

- S.D.S.L. GLOBE VALVE
- S.D.N.R. GLOBE VALVE
- BALL VALVE
- FLOW INDICATOR
- STRUM BOX
- STRAINER
- MUD BOX
- BUTTERFLY VALVE
- FLGD. EXPANSION JOINT
- DRAIN

COMBINATION VACUUM PRESSURE  
GAUGE (100 MM#)

PRESSURE GAUGE (100 MM#)

FLGD. CONN.

'EVERITE' ADAPTER  
C/W DUST CAP

VALVE MANIFOLD

CONCENTRIC REDUCER

PUMP DATA

BILGE & BALLAST

IRON A/S SELF PRIMING, VERTICAL, SPLIT-CASE  
CENTRIFUGAL PUMP, MODEL OVP 3.5 /300. FABRICATED  
WITH BRONZE CASING, ALUM. BRONZE IMPELLER, S.S. SHAFT  
AND IMPELLER NUT. MOTOR IS COMPLETE WITH A LEFT  
7.5 KW. POLE MOTOR. THE MOTOR IS V-BELT DRIVEN BY A  
OM INTEGRAL MOTOR STOOL AND JOINED BY A FLEX. COUPLING.

FLUID - SEA WATER  
FLOW - 22.5 M<sup>3</sup> /HR.  
HEAD - 30 M = 300 KPA = 3 BAR

BILGE & FIRE

SAME AS FOR BILGE & BALLAST

WASTE OIL

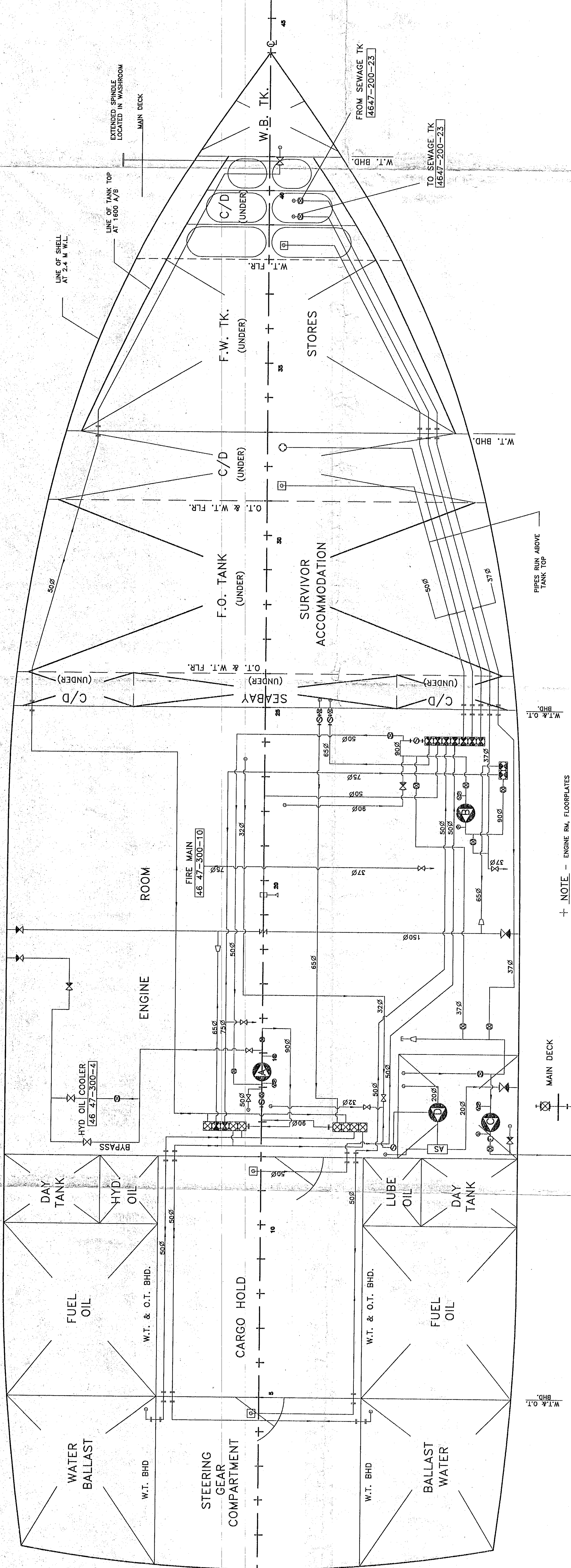
ROPER SELF PRIMING PROCESSING CAVITY PUMP, MODEL 71201  
G.N.L. WITH CAST IRON HOUSING, NEOPRENE STATOR AND S.S. ROTOR.  
STANDARD CONSTRUCTION FEATURES. STUFFED PACKING BOX AND  
ROTOR BEARING. THE MOTOR IS V-BELT DRIVEN BY A  
0.37 K.W. 4 POLE MOTOR AT 650 R.P.M., 230/270 V. 50 HZ.

FLUID - WASTE OIL  
FLOW - 10 M<sup>3</sup> /HR.  
HEAD - 35 M = 350 KPA = 3.5 BAR

OILY WATER SEPARATOR

FRAM - CFS-3 COALESCING PLATE SEPARATOR  
C/W BILGE ALARM.  
CAPACITY - 85 L / MINUTES  
15 PPM OIL CONTENT OR LESS

POWER - 115V/1/60



THIS DRAWING IS  
PRELIMINARY  
APPROVED FOR PRODUCTION

Date 05/02/86  
Scale 1:25  
Sheet 1 of 2

CAD FILE /H000816