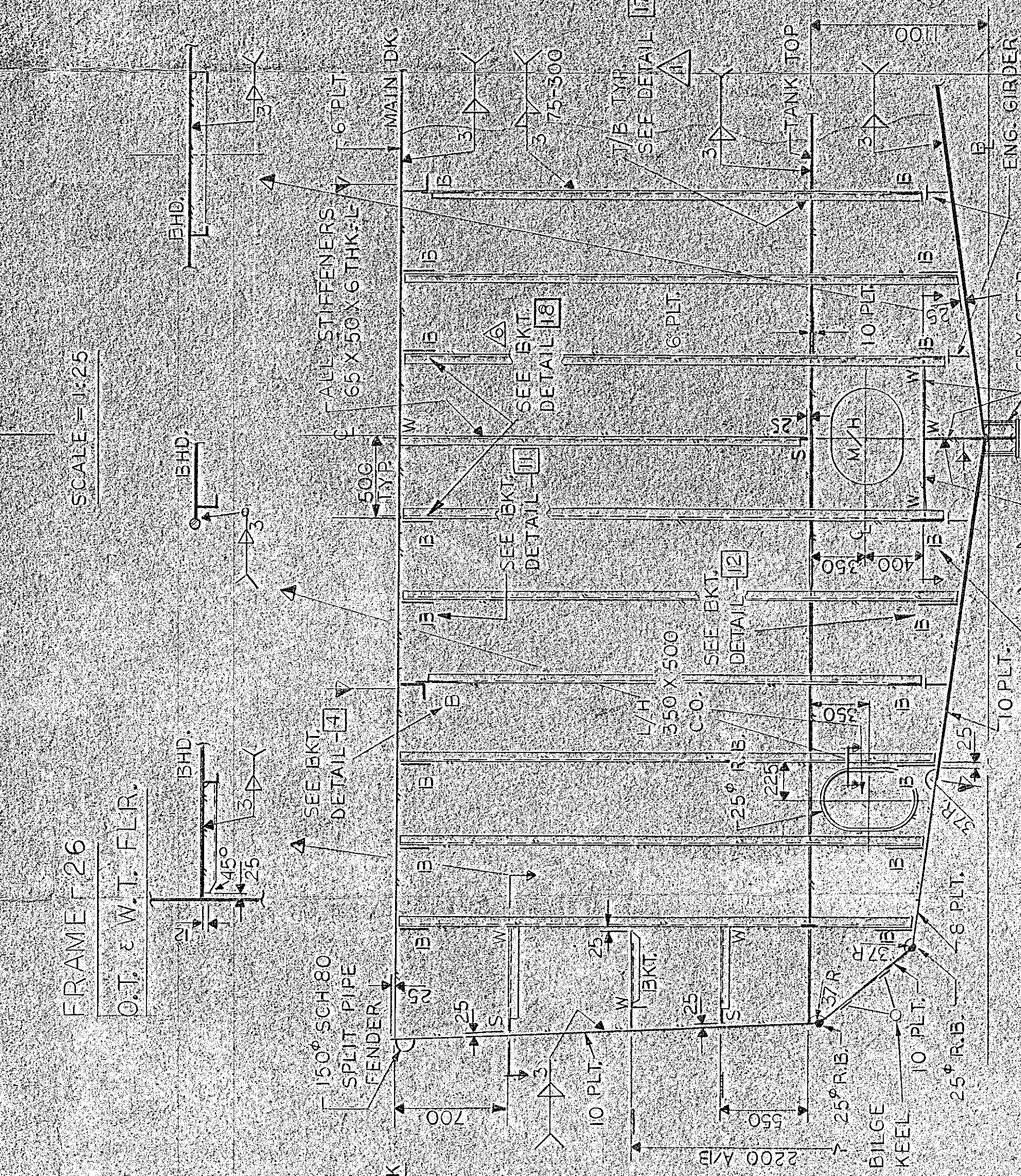
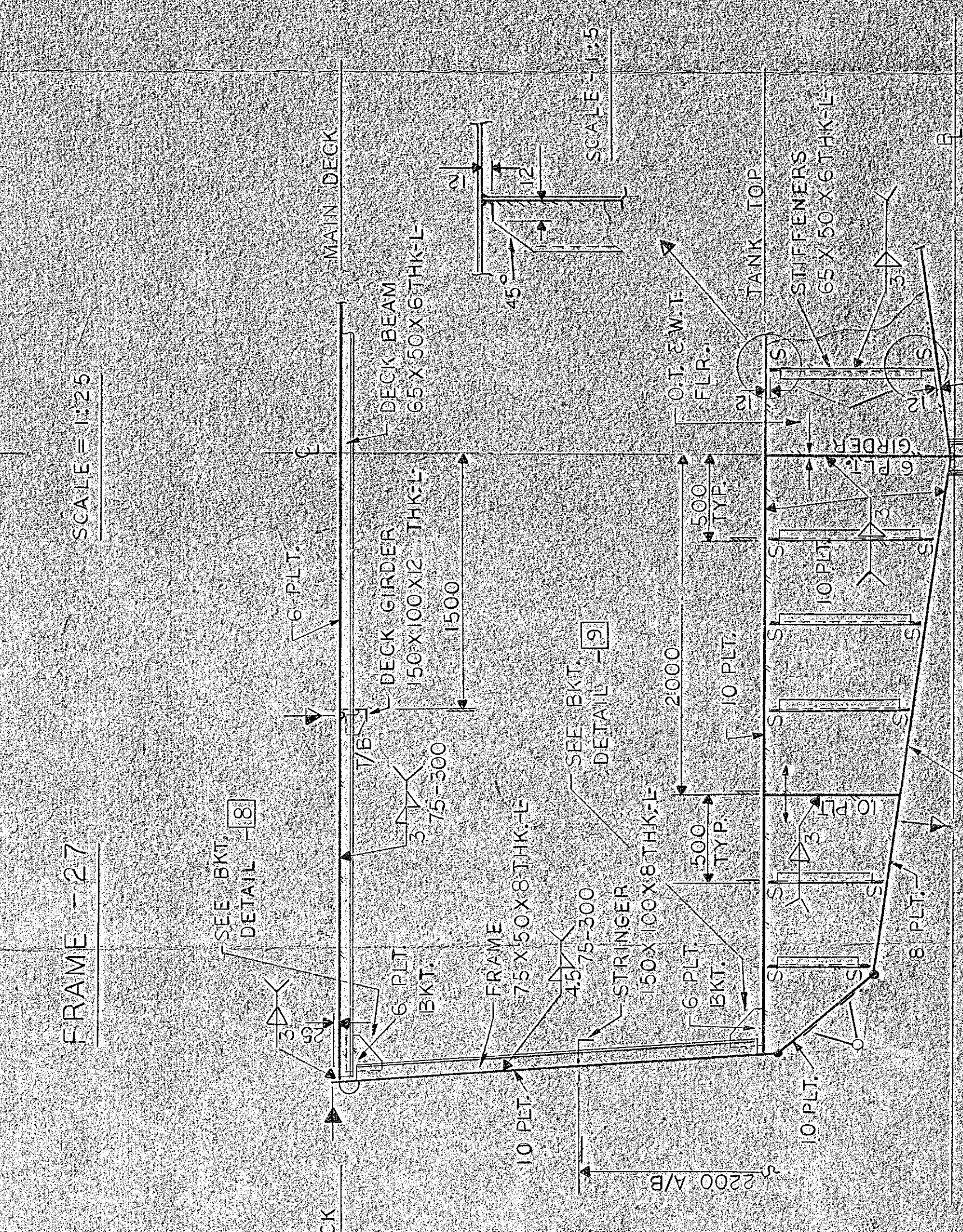
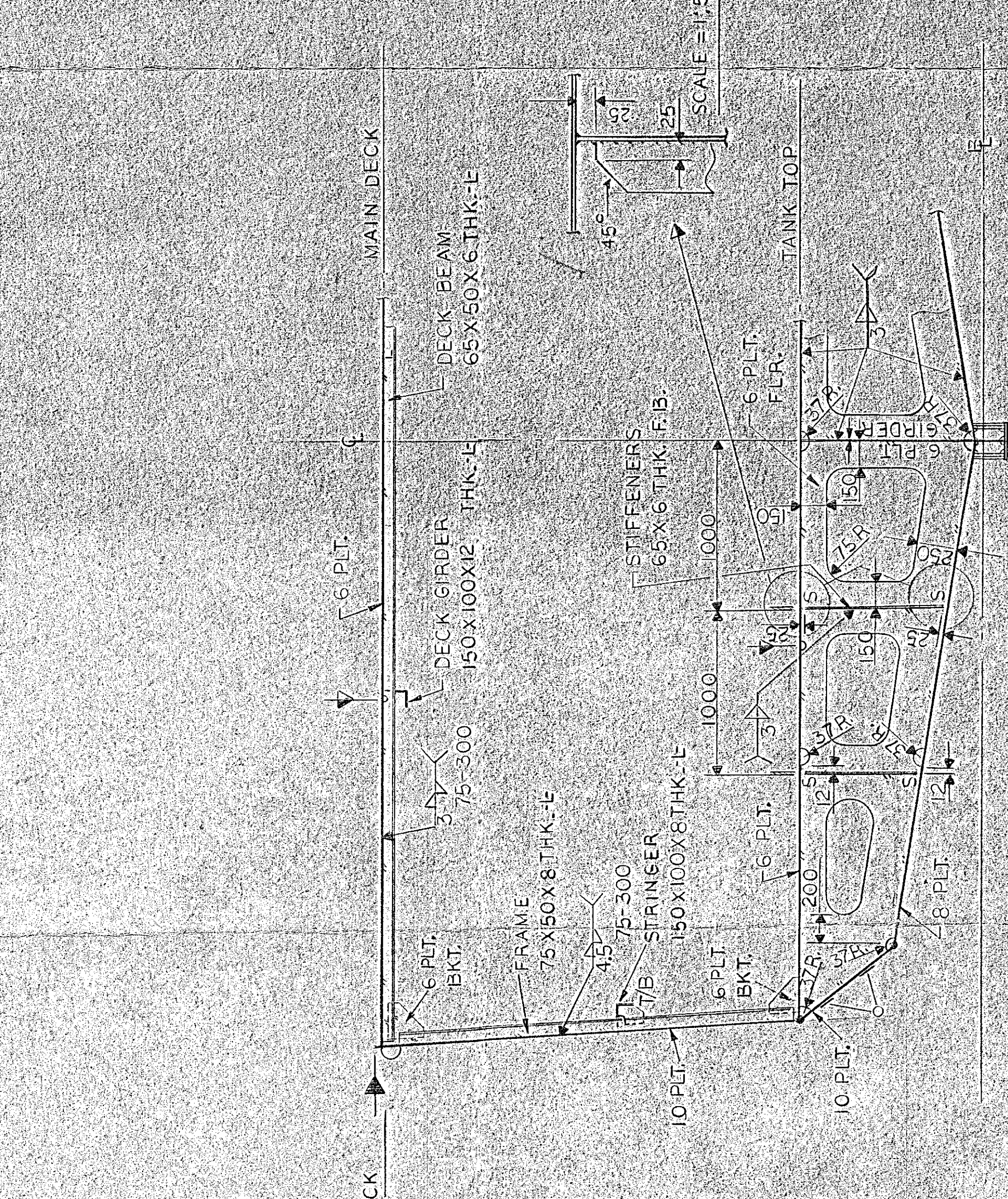
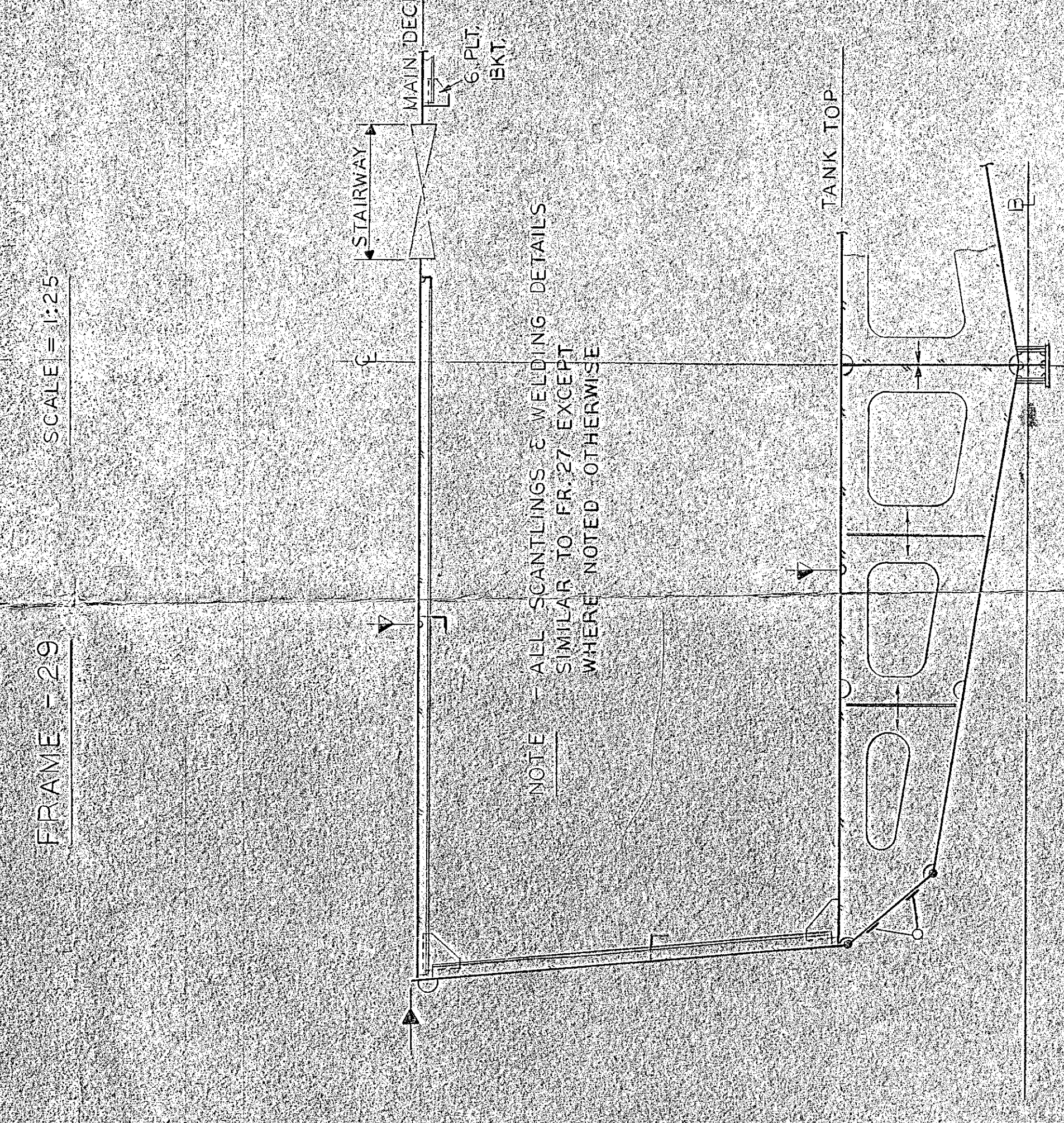
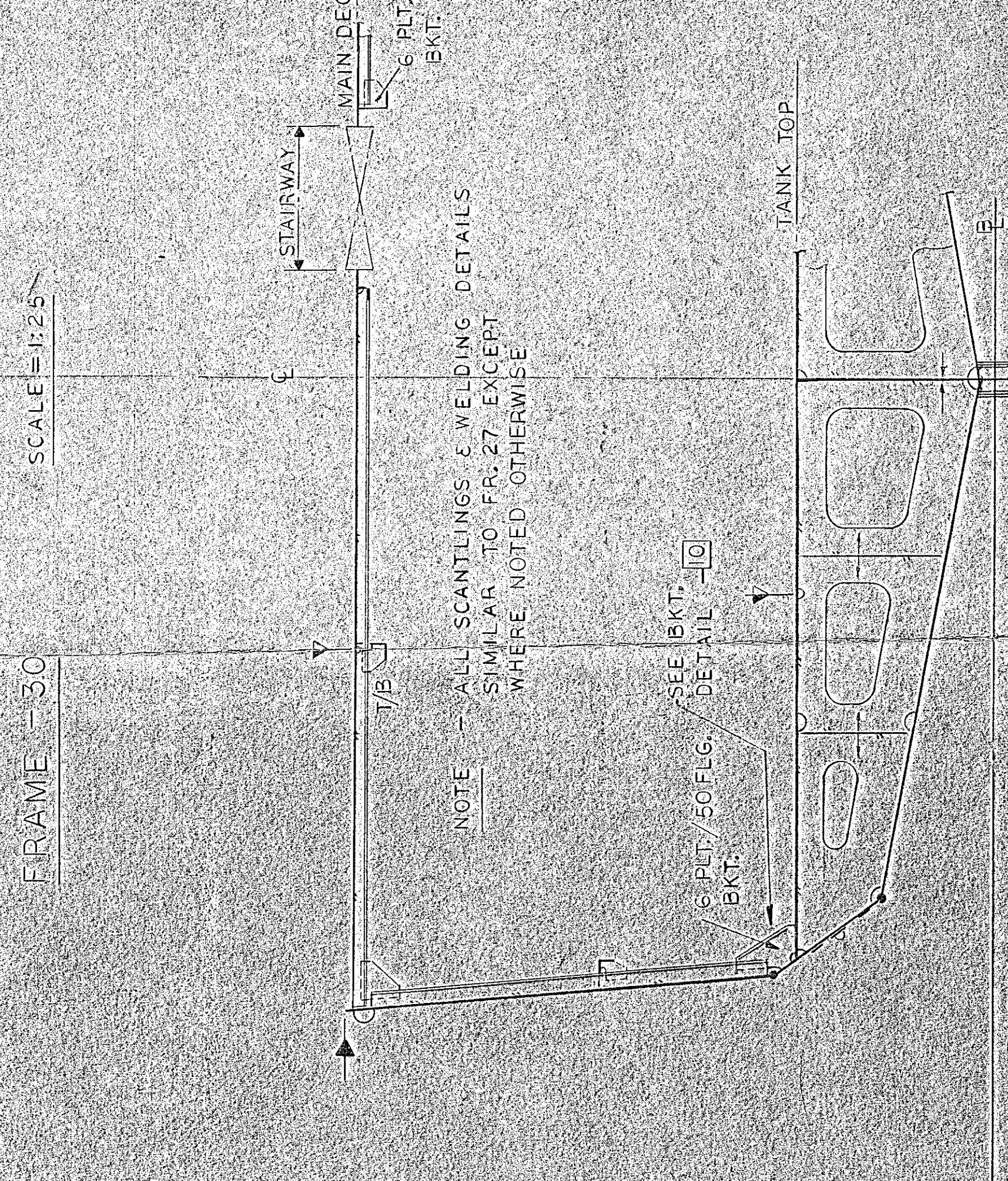
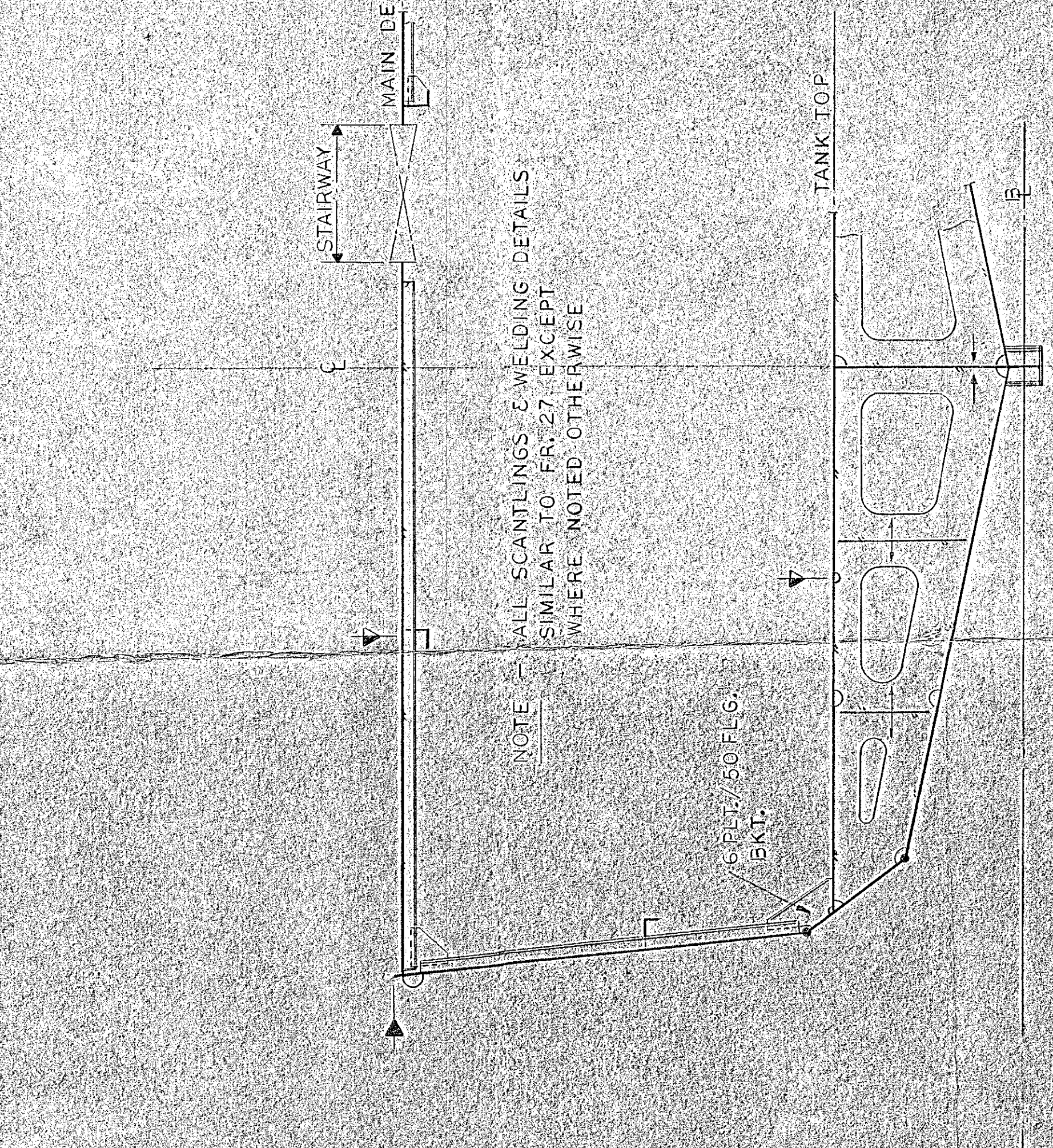
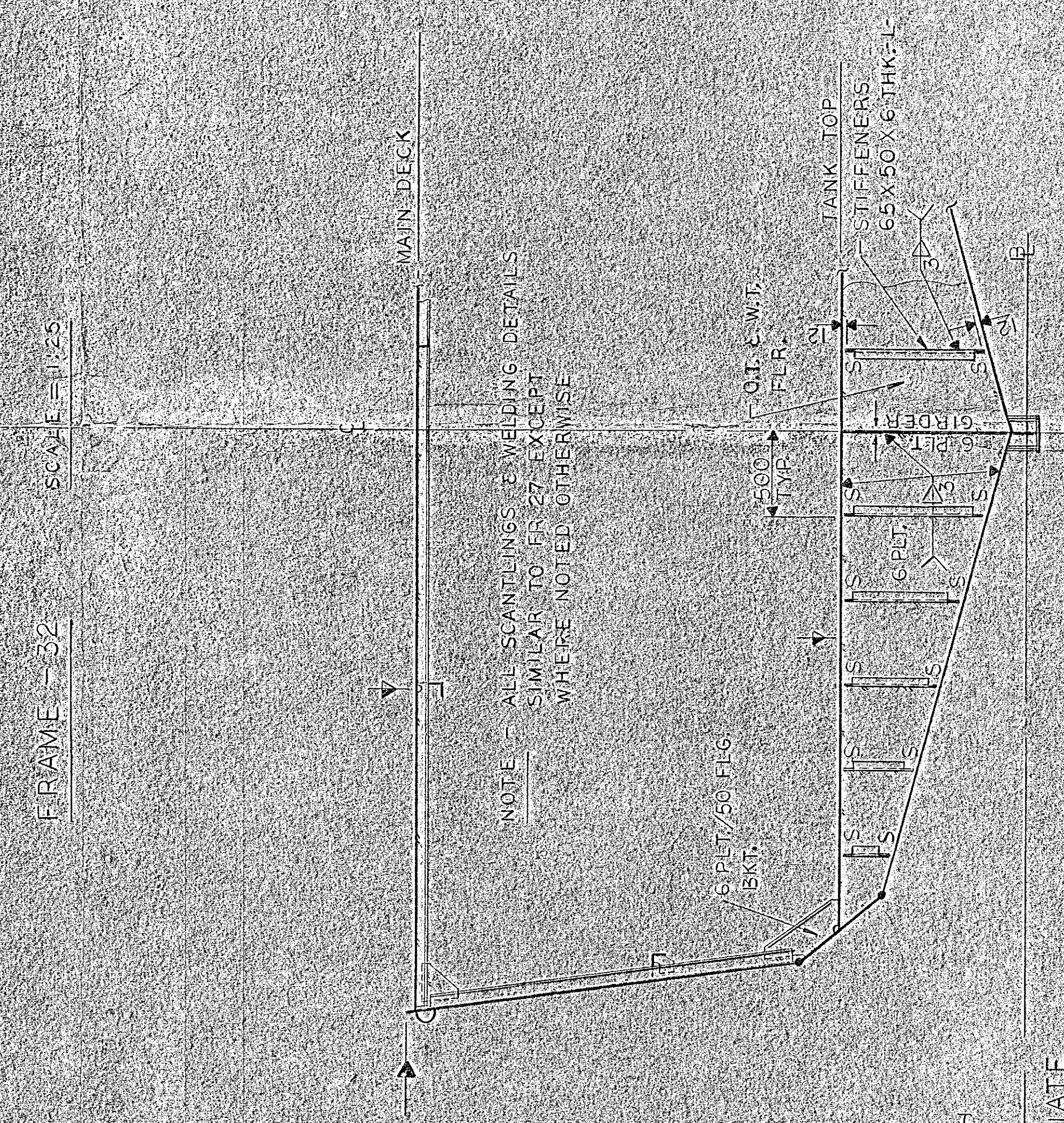
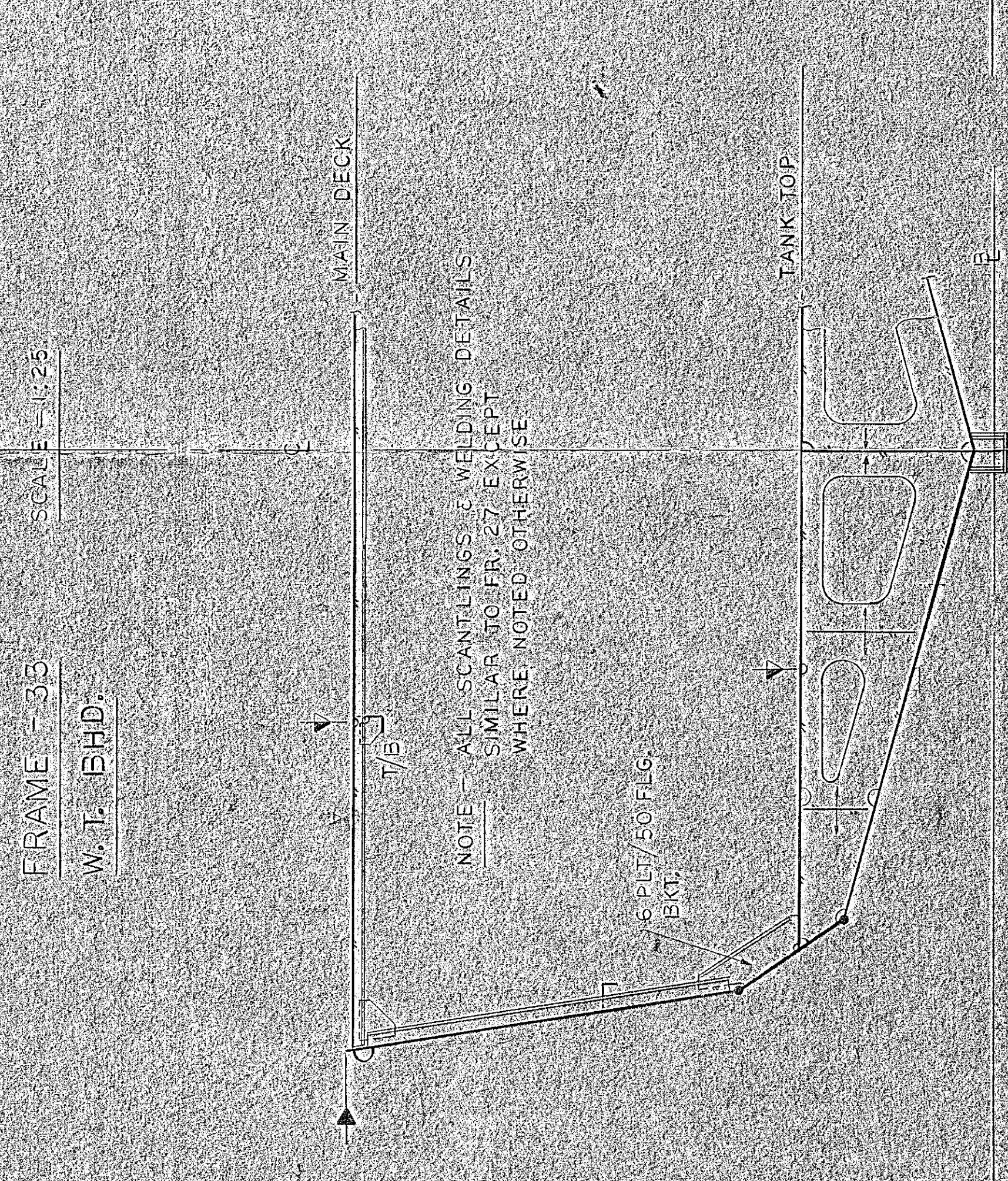
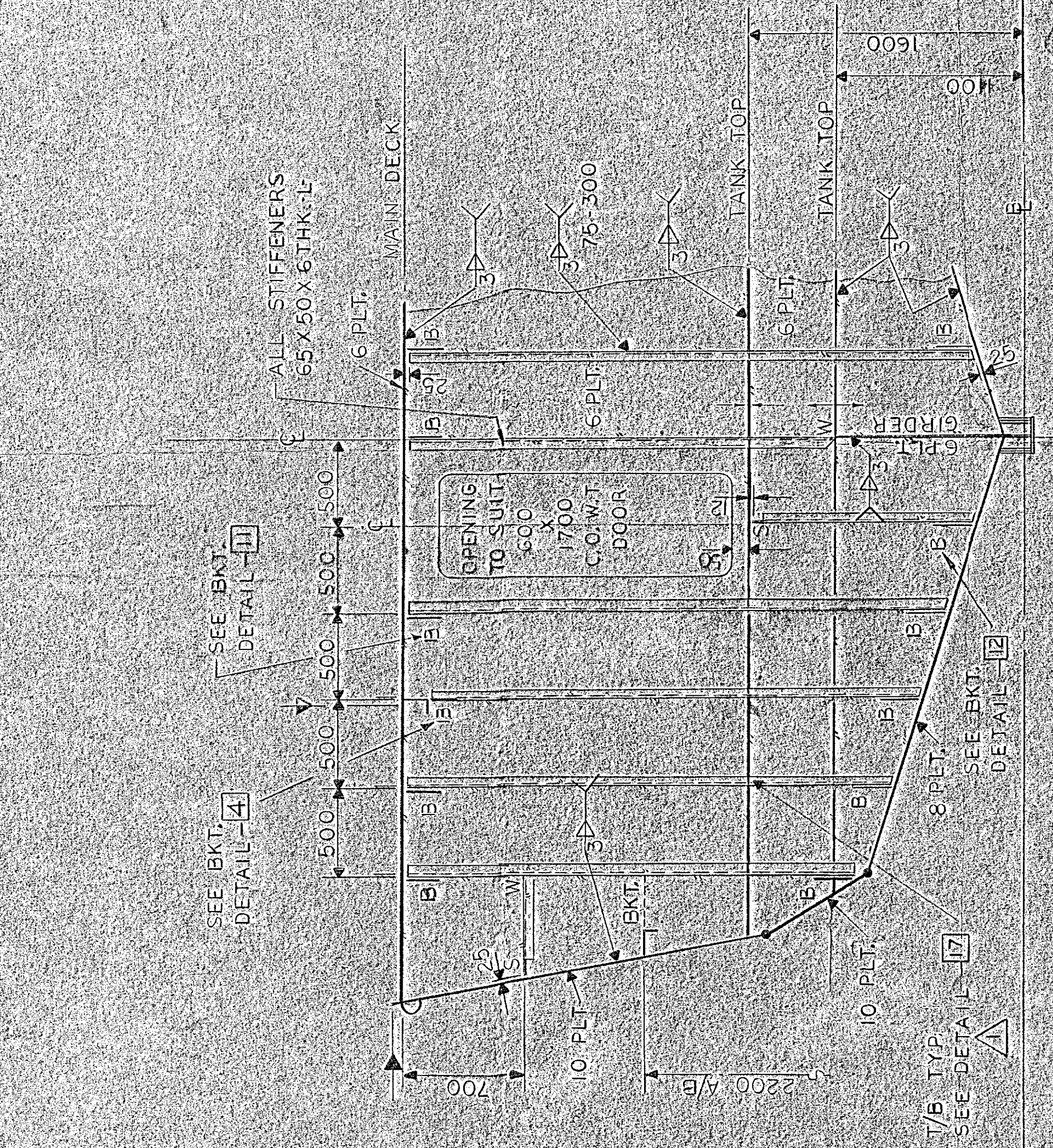


SECTION SHOWING INTERMEDIATE FRAMING FR. 26 1/2 TO 32 1/2  
SCALE 1:25



FOR MATERIAL REQUIREMENTS AND SPECIFICATIONS SEE SEPARATE "BILL OF MATERIAL" FOR THIS DRAWING. DO NOT SCALE DRAWING IF IN DOUBT ASK DRAWING OFFICE.

**PRINCIPAL PARTICULARS**

LENGTH O.A. 2450 M  
LENGTH B.P. 2200 M  
BEAM MLD. 750 M  
DEPTH TO MAIN DECK 360 M  
DRAUGHT SCANTLING 150 M

**CLASSIFICATION**

C.S.I. - HOME TRADE II (UNRESTRICTED)  
- LIFESAVING CLASS H  
- FIRE PROTECTION CLASS H

A.B.S. - RULES FOR BUILDING AND CLASSING STEEL VESSELS UNDER 6 METERS IN LENGTH

**WELDING NOTES**

1. ALL ENDS ARE WELDED.
2. ALL STIFFENERS WITHOUT END ENDS ARE WELDED.
3. ALL STIFFENERS WITH END ENDS WELDED.
4. WHERE STIFFENERS ARE SHOTED THRU BULKHEADS, WEB FRS, ETC. EACH SIDE OF THE CUT OUT SHOULD BE WELDED.
5. IN WAY OF ALL SCALLOPS WELD EACH SIDE FOR 75 MM WITH THE WELD BEING WELDED AROUND EDGE.
6. ALL EXPOSED STRUCTURE WELDED.
7. ALL UNDER DECK STRUCTURE SUPPORTING HEAD LOADS TO BE WELDED.
8. ALL STRUCTURE IN WAY OF HATCH OPENINGS WELDED.
9. AT INTERSECTION OF WELDED STRUCTURE, WELD JOINTS TO BE WELDED ON EACH SIDE INTERSECTING MEMBERS, LENGTH AT ENDS.
10. WELD SIZE GIVEN DENOTES "PROUT" THICKNESS.

**REFERENCE DRAWINGS**

ITEM	DRG. NO.	TITLE
1	10	10
2	11	11
3	12	12
4	13	13
5	14	14
6	15	15
7	16	16
8	17	17
9	18	18
10	19	19
11	20	20
12	21	21
13	22	22
14	23	23
15	24	24
16	25	25
17	26	26
18	27	27
19	28	28
20	29	29
21	30	30
22	31	31
23	32	32
24	33	33
25	34	34
26	35	35
27	36	36
28	37	37
29	38	38
30	39	39
31	40	40
32	41	41
33	42	42
34	43	43
35	44	44
36	45	45
37	46	46
38	47	47
39	48	48
40	49	49
41	50	50
42	51	51
43	52	52
44	53	53
45	54	54
46	55	55
47	56	56
48	57	57
49	58	58
50	59	59
51	60	60
52	61	61
53	62	62
54	63	63
55	64	64
56	65	65
57	66	66
58	67	67
59	68	68
60	69	69
61	70	70
62	71	71
63	72	72
64	73	73
65	74	74
66	75	75
67	76	76
68	77	77
69	78	78
70	79	79
71	80	80
72	81	81
73	82	82
74	83	83
75	84	84
76	85	85
77	86	86
78	87	87
79	88	88
80	89	89
81	90	90
82	91	91
83	92	92
84	93	93
85	94	94
86	95	95
87	96	96
88	97	97
89	98	98
90	99	99
91	100	100
92	101	101
93	102	102
94	103	103
95	104	104
96	105	105
97	106	106
98	107	107
99	108	108
100	109	109
101	110	110
102	111	111
103	112	112
104	113	113
105	114	114
106	115	115
107	116	116
108	117	117
109	118	118
110	119	119
111	120	120
112	121	121
113	122	122
114	123	123
115	124	124
116	125	125
117	126	126
118	127	127
119	128	128
120	129	129
121	130	130
122	131	131
123	132	132
124	133	133
125	134	134
126	135	135
127	136	136
128	137	137
129	138	138
130	139	139
131	140	140
132	141	141
133	142	142
134	143	143
135	144	144
136	145	145
137	146	146
138	147	147
139	148	148
140	149	149
141	150	150
142	151	151
143	152	152
144	153	153
145	154	154
146	155	155
147	156	156
148	157	157
149	158	158
150	159	159
151	160	160
152	161	161
153	162	162
154	163	163
155	164	164
156	165	165
157	166	166
158	167	167
159	168	168
160	169	169
161	170	170
162	171	171
163	172	172
164	173	173
165	174	174
166	175	175
167	176	176
168	177	177
169	178	178
170	179	179
171	180	180
172	181	181
173	182	182
174	183	183
175	184	184
176	185	185
177	186	186
178	187	187
179	188	188
180	189	189
181	190	190
182	191	191
183	192	192
184	193	193
185	194	194
186	195	195
187	196	196
188	197	197
189	198	198
190	199	199
191	200	200
192	201	201
193	202	202
194	203	203
195	204	204
196	205	205
197	206	206
198	207	207
199	208	208
200	209	209
201	210	210
202	211	211
203	212	212
204	213	213
205	214	214
206	215	215
207	216	216
208	217	217
209	218	218
210	219	219
211	220	220
212	221	221
213	222	222
214	223	223
215	224	224
216	225	225
217	226	226
218	227	227
219	228	228
220	229	229
221	230	230
222	231	231
223	232	232
224	233	233
225	234	234
226	235	235
227	236	236
228	237	237
229	238	238
230	239	239
231	240	240
232	241	241
233	242	242
234	243	243
235	244	244
236	245	245
237	246	246
238	247	247
239	248	248
240	249	249
241	250	250
242	251	251
243	252	252
244	253	253
245	254	254
246	255	255
247	256	256
248	257	257
249	258	258
250	259	259
251	260	260
252	261	261
253	262	262
254	263	263
255	264	264
256	265	265
257	266	266
258	267	267
259	268	268
260	269	269
261	270	270
262	271	271
263	272	272
264	273	273
265	274	274
266	275	275
267	276	276
268	277	277
269	278	278
270	279	279
271	280	280
272	281	281
273	282	282
274	283	283
275	284	284
276	285	285
277	286	286
278	287	287
279	288	288
280	289	289
281	290	290
282	291	291
283	292	292
284	293	293
285	294	294
286	295	295
287	296	296
288	297	297
289	298	298
290	299	299
291	300	300
292	301	301
293	302	302
294	303	303
295	304	304
296	305	305
297	306	306
298	307	307
299	308	308
300	309	309
301	310	310
302	311	311
303	312	312
304	313	313
305	314	314
306	315	315
307	316	316
308	317	317
309	318	318
310	319	319
311	320	320
312	321	321
313	322	322
314	323	323
315	324	324
316	325	325
317	326	326
318	327	