

25 mm Ø GALVANIZED STEEL  
HANDGRIP

WHEELGUARD

LADDER UPRIGHT

PLAN

HANDGRIP

BEVEL 45°

WHEELGUARD

COPING

150 mm x 150 mm LADDER  
UPRIGHT

DECK ELEVATION

25 mm Ø GALVANIZED STEEL  
RUNGS AT 300 mm C/C

NUMBER AND  
SIZES OF BOLTS  
AS SPECIFIED

L.N.T.

# NOTE

1. ALL DIMENSIONS IN  
MILLIMETERS.

ELEVATION



Public Works  
Canada

Travaux publics  
Canada

Drawing title: **TYPICAL LADDER**  
Titre du dessin:

**DETAIL & FASTENING**

scale:  
échelle: N.T.S.

date:  
1988-07-06

revisions

designed by:  
conçu par: N.H.

drawn by:  
dessiné par: D.B.

reviewed by:  
examiné par: *H. Diddam*

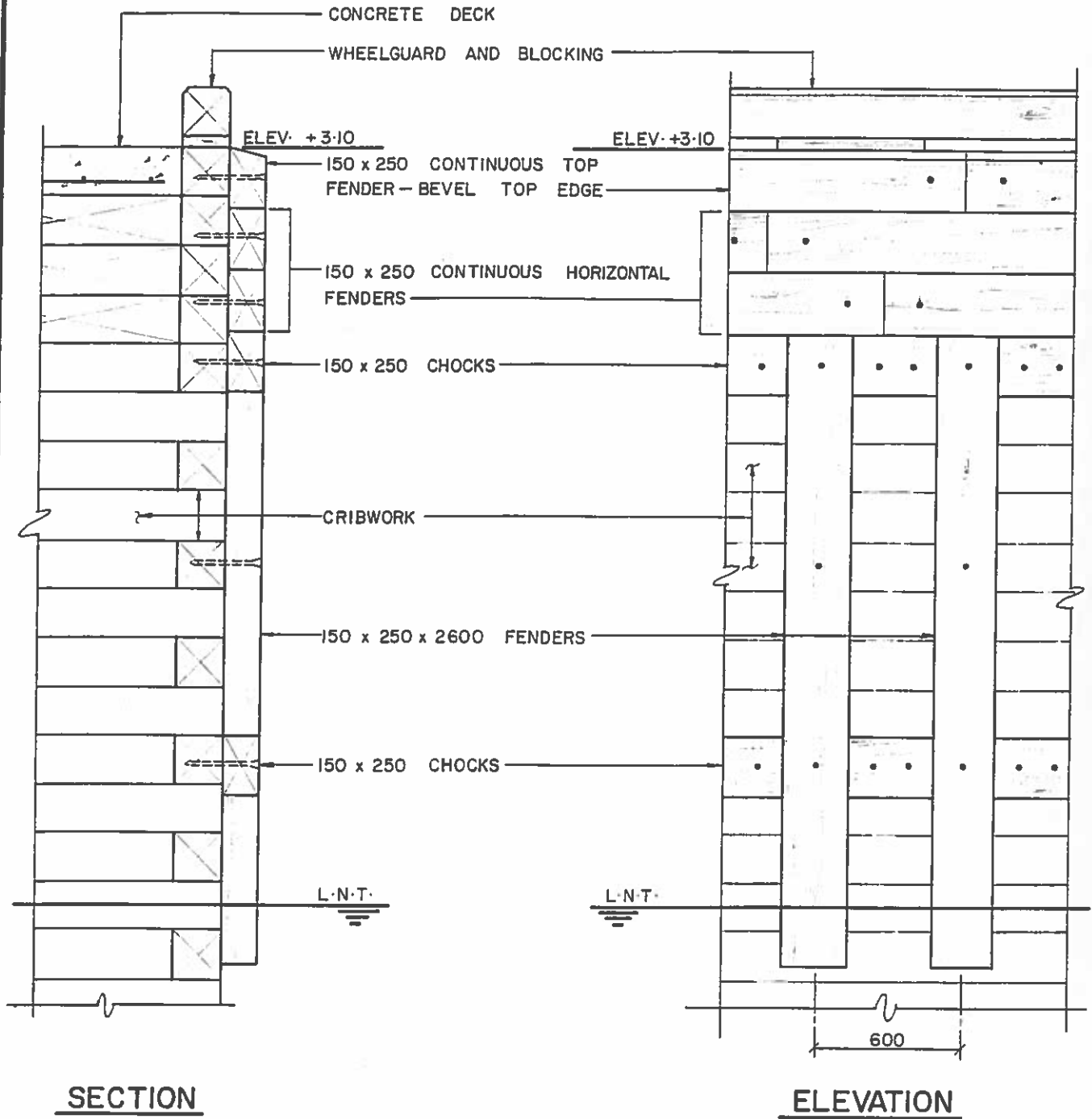
approved by:  
approuvé par:

project no.:  
no. du projet:

dwg. no.  
dessin no.  
**CB-03**

NOTE

1. ALL DIMENSIONS IN MILLIMETERS
2. ALL ELEVATIONS IN METERS.



Public Works  
Canada

Travaux publics  
Canada

scale:  
échelle: 1:25

date: 1988-09-24

revisions:

designed by:  
conçu par: N.H.

drawn by:  
dessiné par: K.D.

reviewed by:  
examiné par:

approved by:  
approuvé par:

project no.:  
no. du projet:

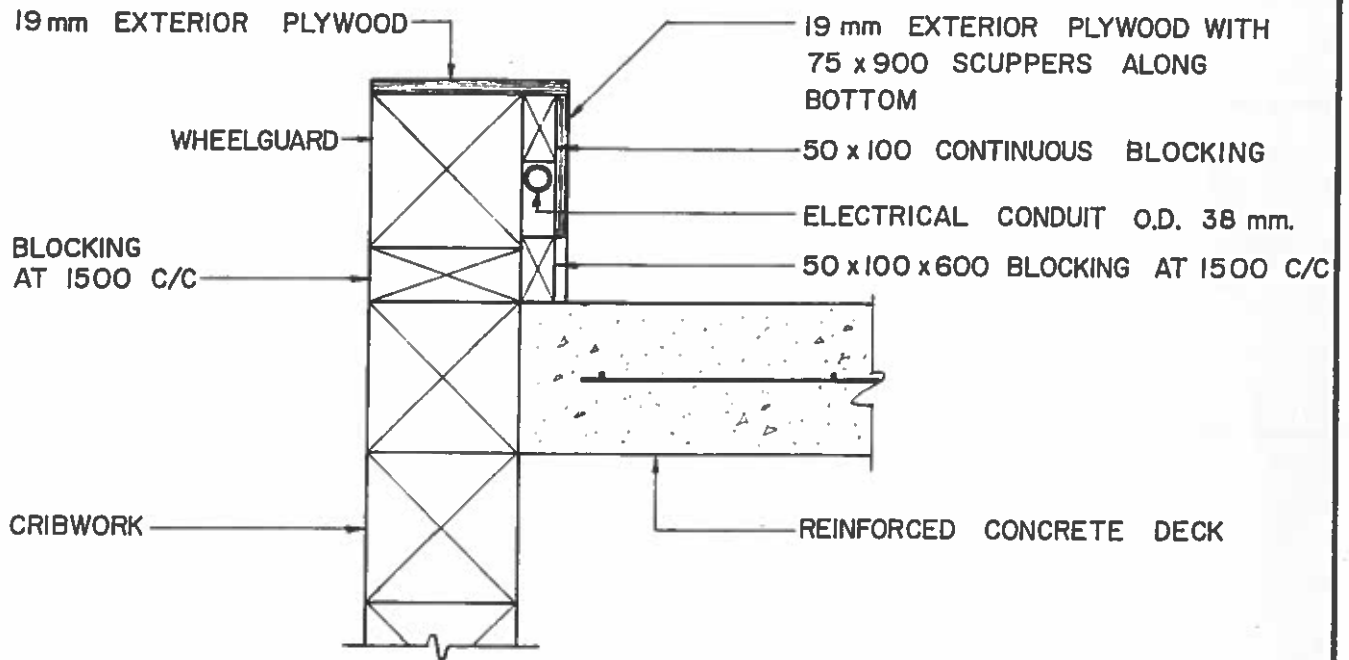
dwg. no.:  
dessin no.

CB-05

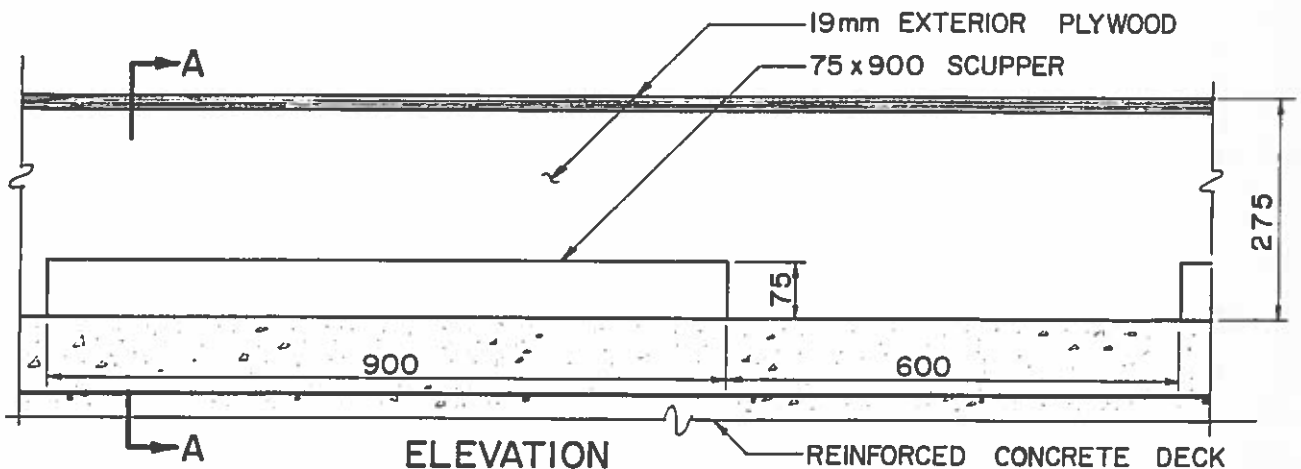
TYPICAL DETAIL - VERTICAL /  
HORIZONTAL FENDERS

# NOTES

1. ALL DIMENSIONS IN MILLIMETERS.
2. TIMBER SIZES AS SPECIFIED.



SECTION A-A



Public Works  
Canada

Travaux publics  
Canada

scale:  
échelle: 1:10

date: SEPTEMBER 1992

revisions:

designed by:  
conçu par: N.H.

drawn by:  
dessiné par: K.D.

reviewed by:  
examiné par: *Keith Dickson*

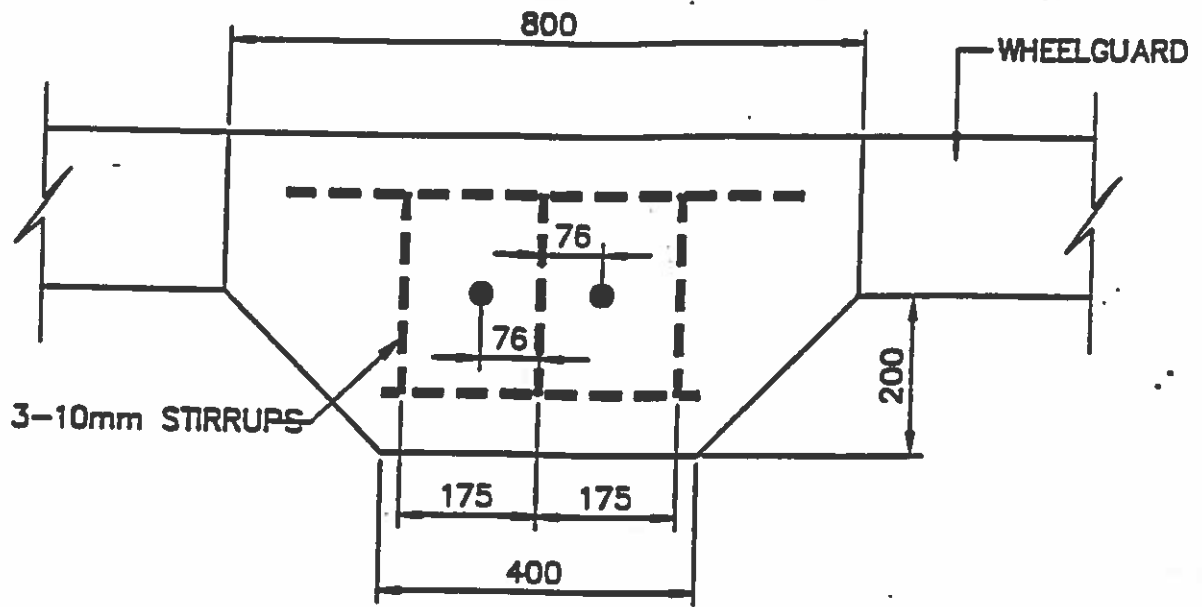
approved by:  
approuvé par:

project no.:  
no. du projet:

dwg. no.:  
dessin no.:

CB-06

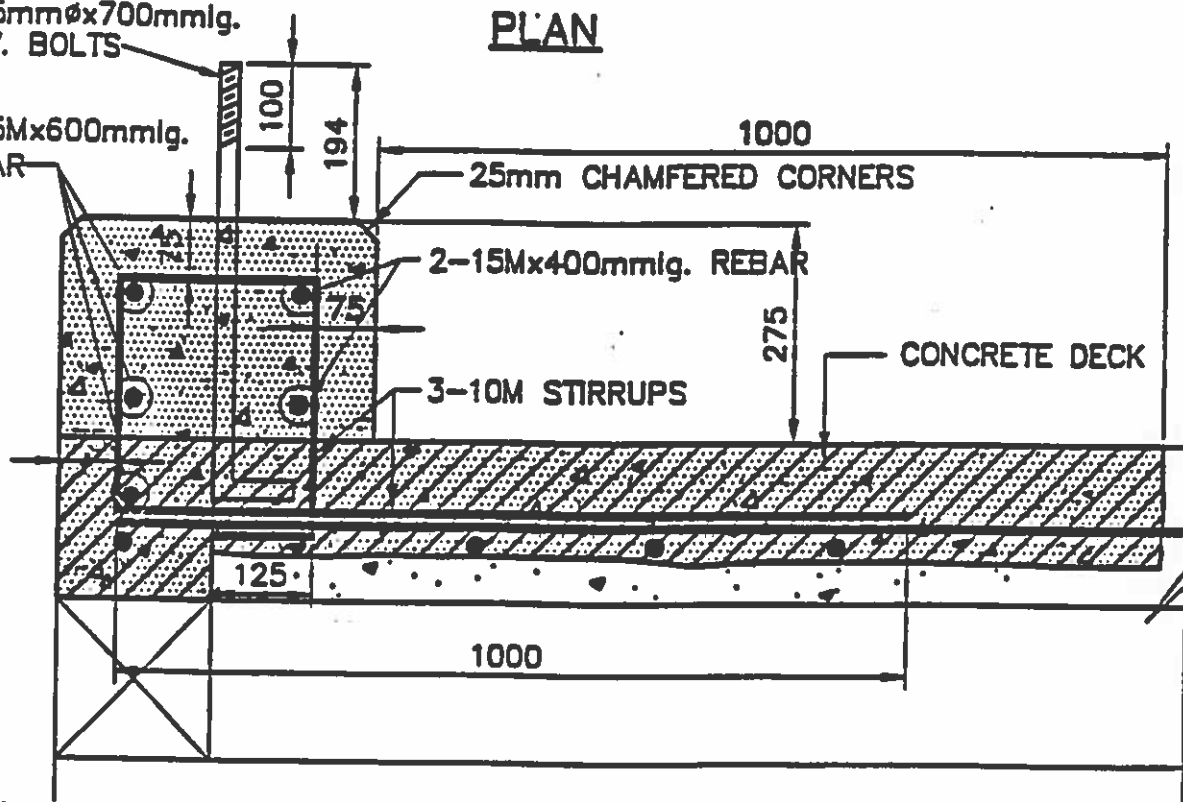
TYPICAL PLYWOOD  
CONDUIT PROTECTION



2-25mm $\phi$ x700mmlg.  
GALV. BOLTS

3-15Mx600mmlg.  
REBAR

PLAN



NOTES:

1. ALL DIMENSIONS IN MILLIMETERS

LEGEND



INDICATES AREA OF NEW WORK



INDICATES AREA TO BE DEMOLISHED AND REMOVED



Public Works and  
Government Services  
Canada

Travaux publics et  
Services gouvernementaux  
Canada

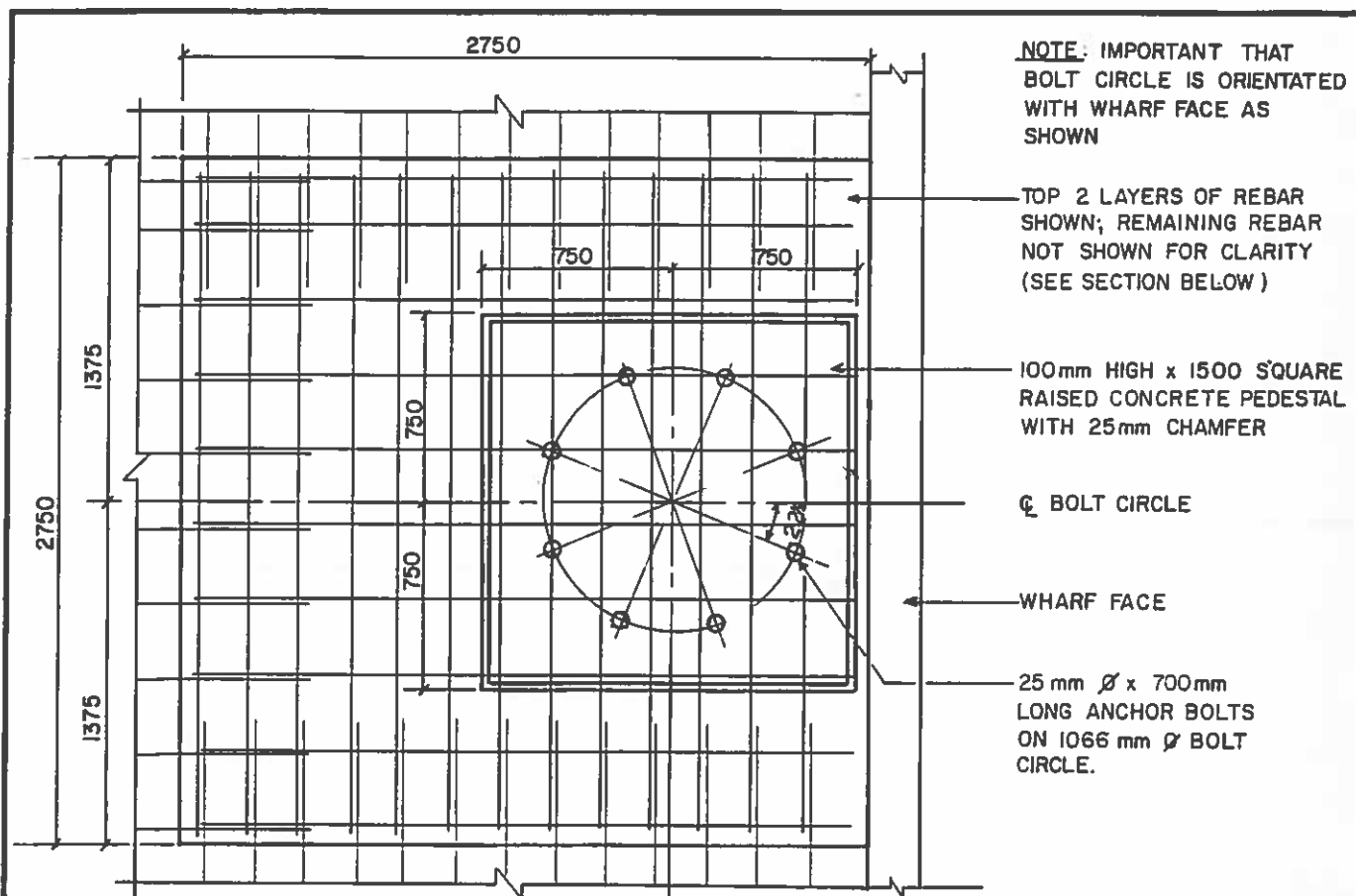
CLEAT  
PLACEMENT

PLAN AND  
SECTION

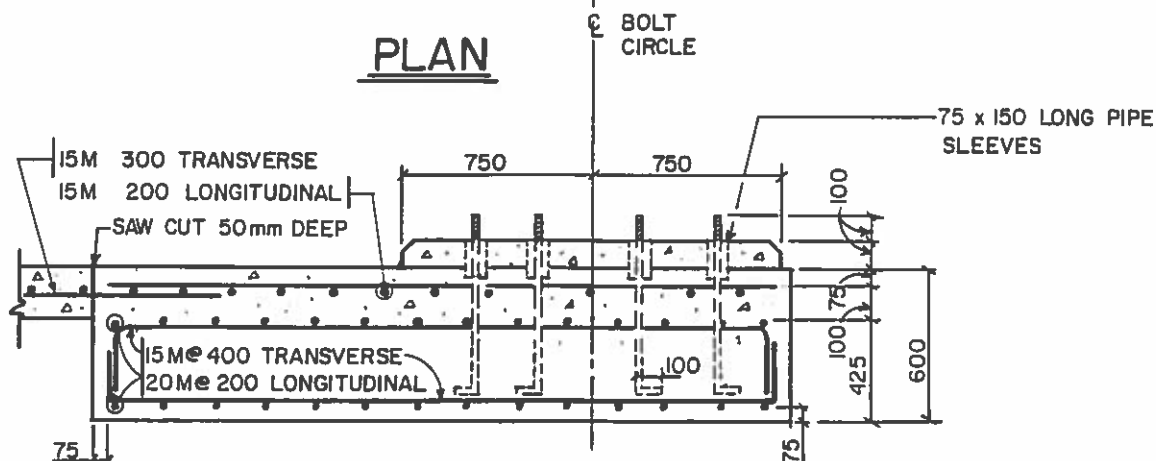
M. HYNES MAY 1995

D. BURSEY MAY 1995

CB-D7A



**PLAN**



**SECTION**

**NOTE:**

1. ALL DIMENSIONS IN MILLIMETERS



Public Works Canada  
Travaux publics Canada

Drawing title: **JIB CRANE FOUNDATION  
FOR EXISTING CRIB  
WHARF**

designed by: **N. HOGAN** date: **AUG. '89**

drawn by: **D. BURSEY**

reviewed by: *[Signature]*

approved by: *[Signature]*

**FLOWER'S COVE, NF.**

**EMERGENCY JIB CRANE  
BASE CONSTRUCTION.**

date: **AUG. 1989**

revisions

SCALE: **1: 30**

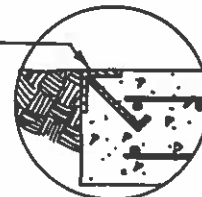
project no.: **733280**

dwg. no.: **CB-08**

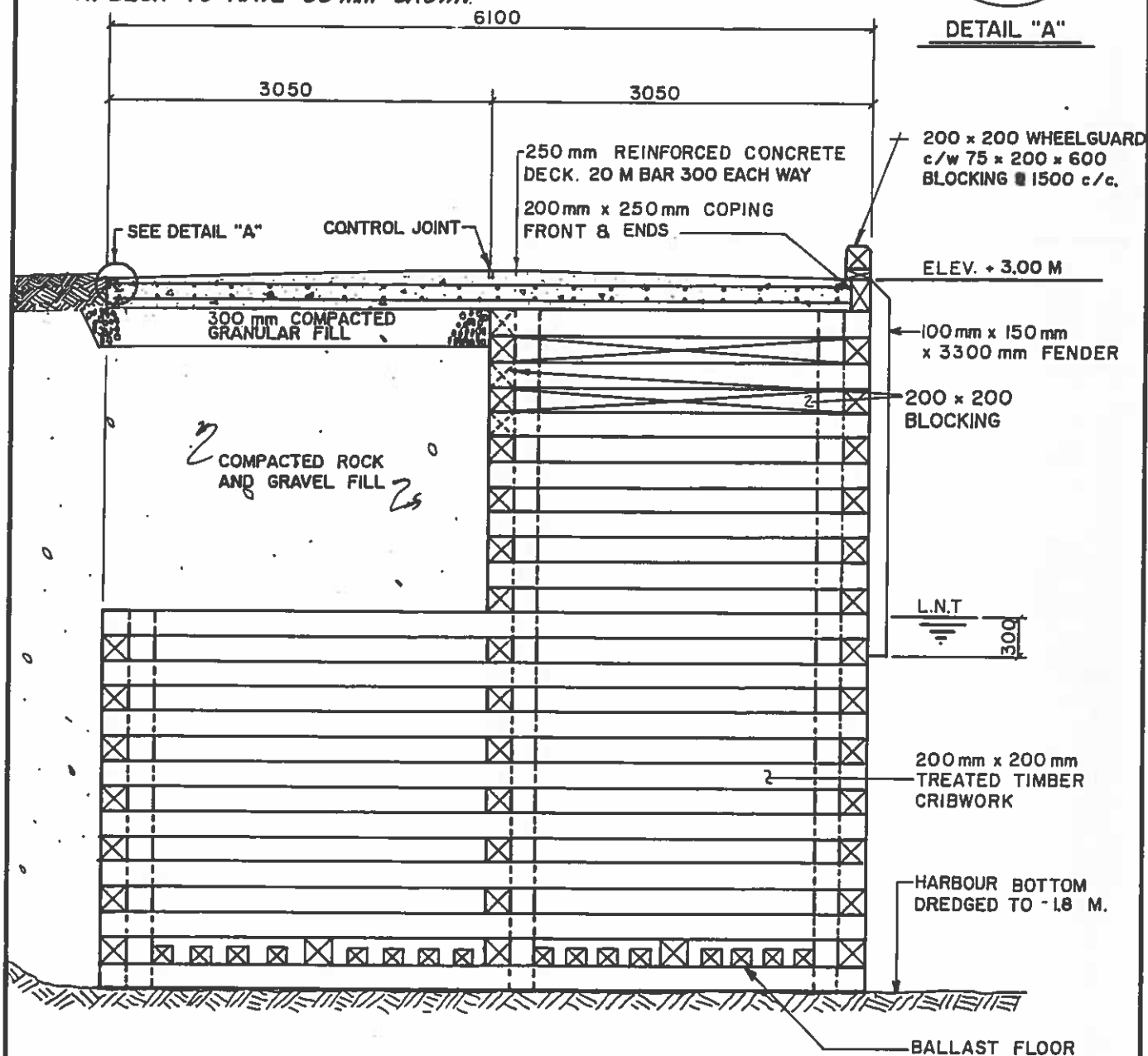
# NOTE

1. ALL DIMENSIONS IN MILLIMETERS
2. ALL ELEVATIONS IN METERS
3. DECK LOADING TO MS150
4. DECK TO HAVE 50 mm CROWN.

75 x 75 x 6 mm GALV. ANGLE  
C/W 9 mm  $\phi$  x 200 mm LONG  
ANCHORS ■ 300 mm C/C  
CONTINUOUS ALONG EXPOSED  
EDGES OF CONCRETE



DETAIL "A"



Public Works Canada  
Travaux publics Canada

Drawing title  
Titre du dessin:

## TYPICAL TIMBER STEP CRIB

date: JANUARY 1990

scale:  
échelle: N.T.S.

revisions:

designed by:  
conçu par: N. HOGAN

date

drawn by:  
dessiné par: D. BURSEY

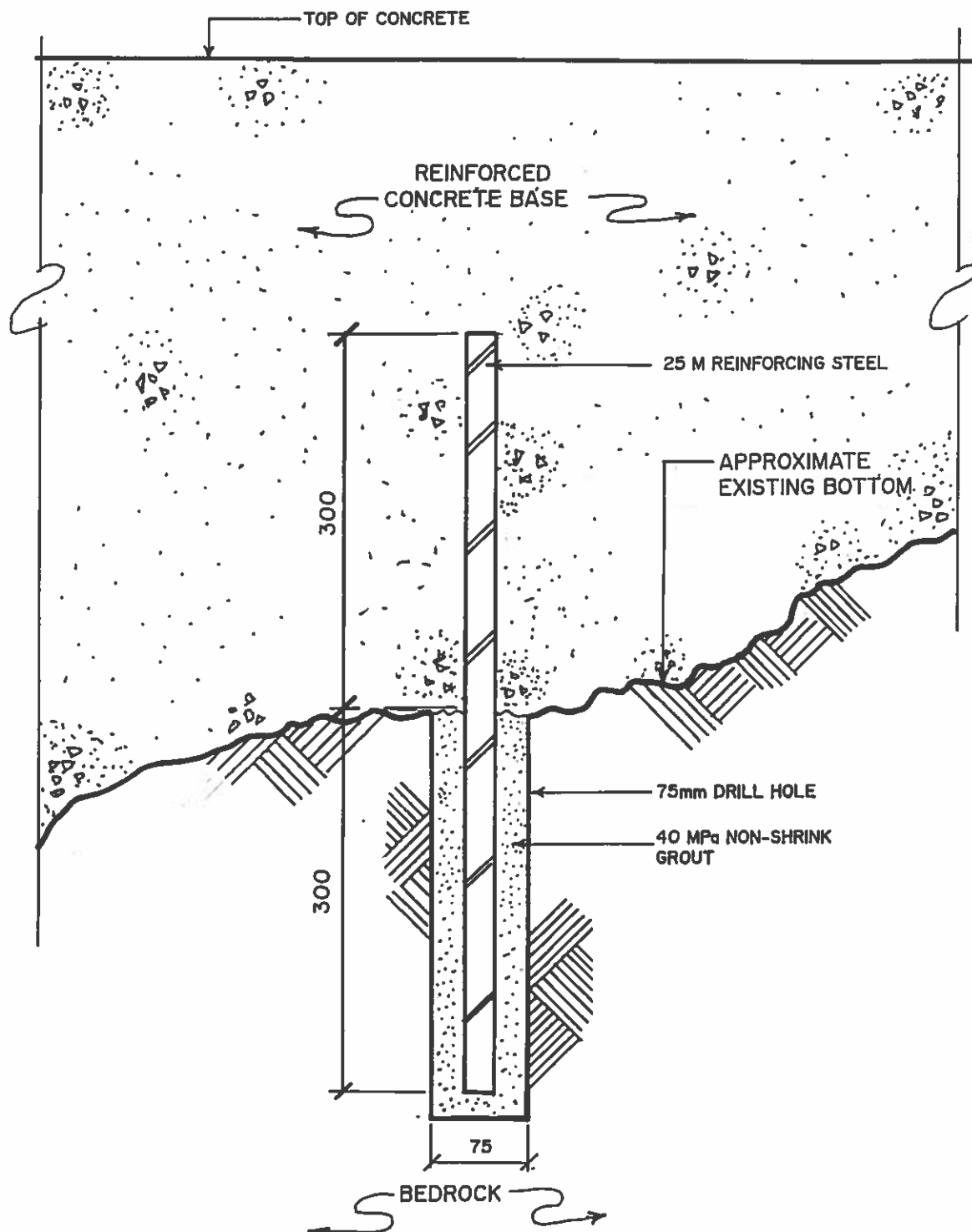
reviewed by:  
examiné par: Keith Sidham

approved by:  
approuvé par:

project no.:  
no. du projet:


dwg. no.:  
dessin no.:

C.B. - 12

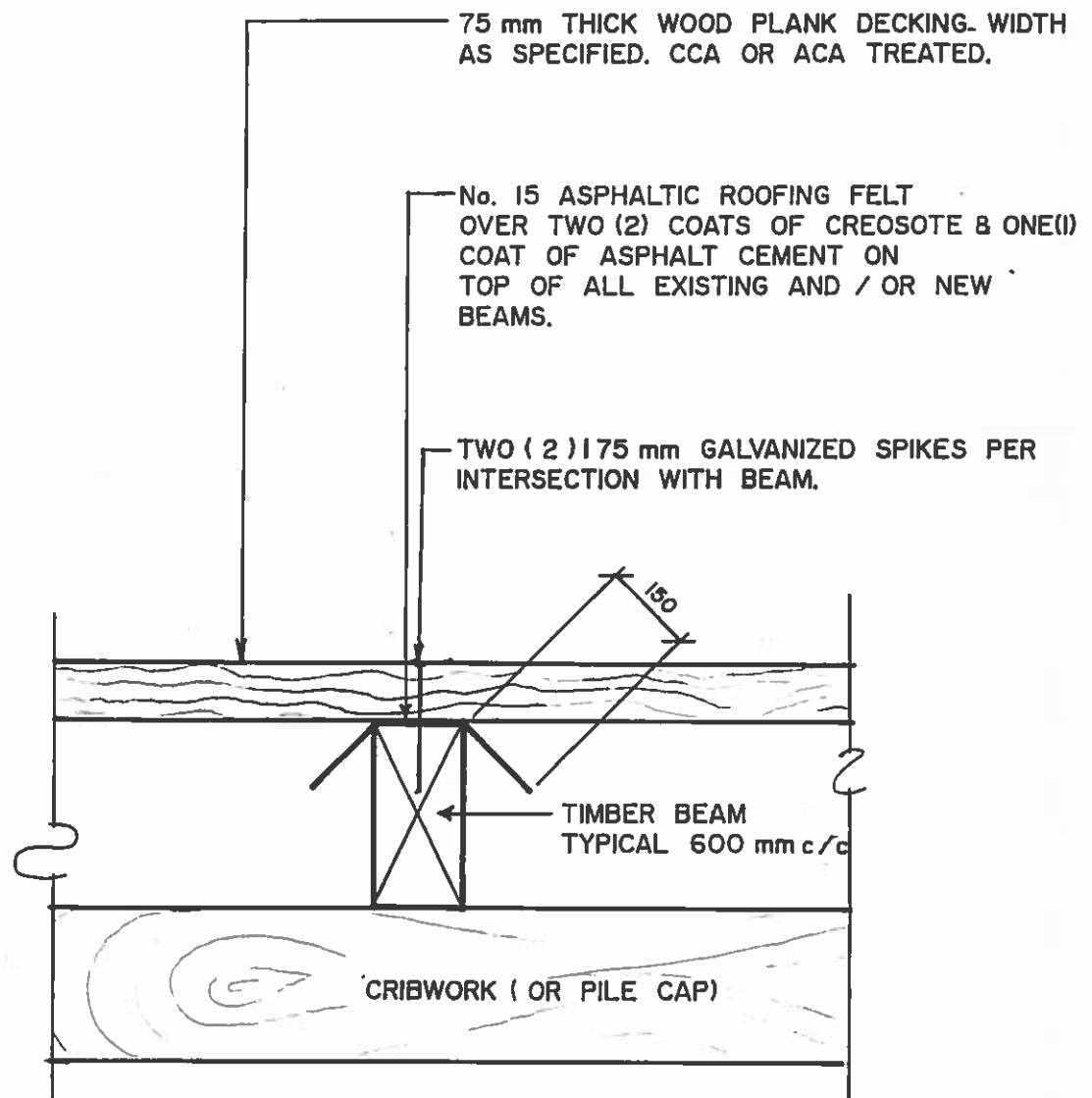


**NOTES :**

1. ALL DIMENSIONS IN MILLIMETERS.
2. REINFORCING STEEL - BILLET GRADE TO CSAG30J2-M1977, GRADE 400.
3. CAST-IN-PLACE CONCRETE TO MINIMUM COMPRESSIVE STRENGTH 30MPa AT 28 DAYS.
4. REINFORCING STEEL OMITTED FOR CLARITY.


 <b>Public Works Canada</b> <b>Travaux publics Canada</b>	Drawing title: Titre du dessin: <b><u>TYPICAL DOWEL DETAIL</u></b>		designed by: conçu par: <b>N. HOGAN</b>	
	scale: échelle: <b>1 : 5</b>		drawn by: dessiné par: <b>L. STRONG</b>	
	date: <b>SEPTEMBER 13, 1990</b>		reviewed by: examiné par:	
	revisions:		approved by: approuvé par:	
			project no.: no. du projet:	dwg. no.: dessin no.: <b>CB-16</b>





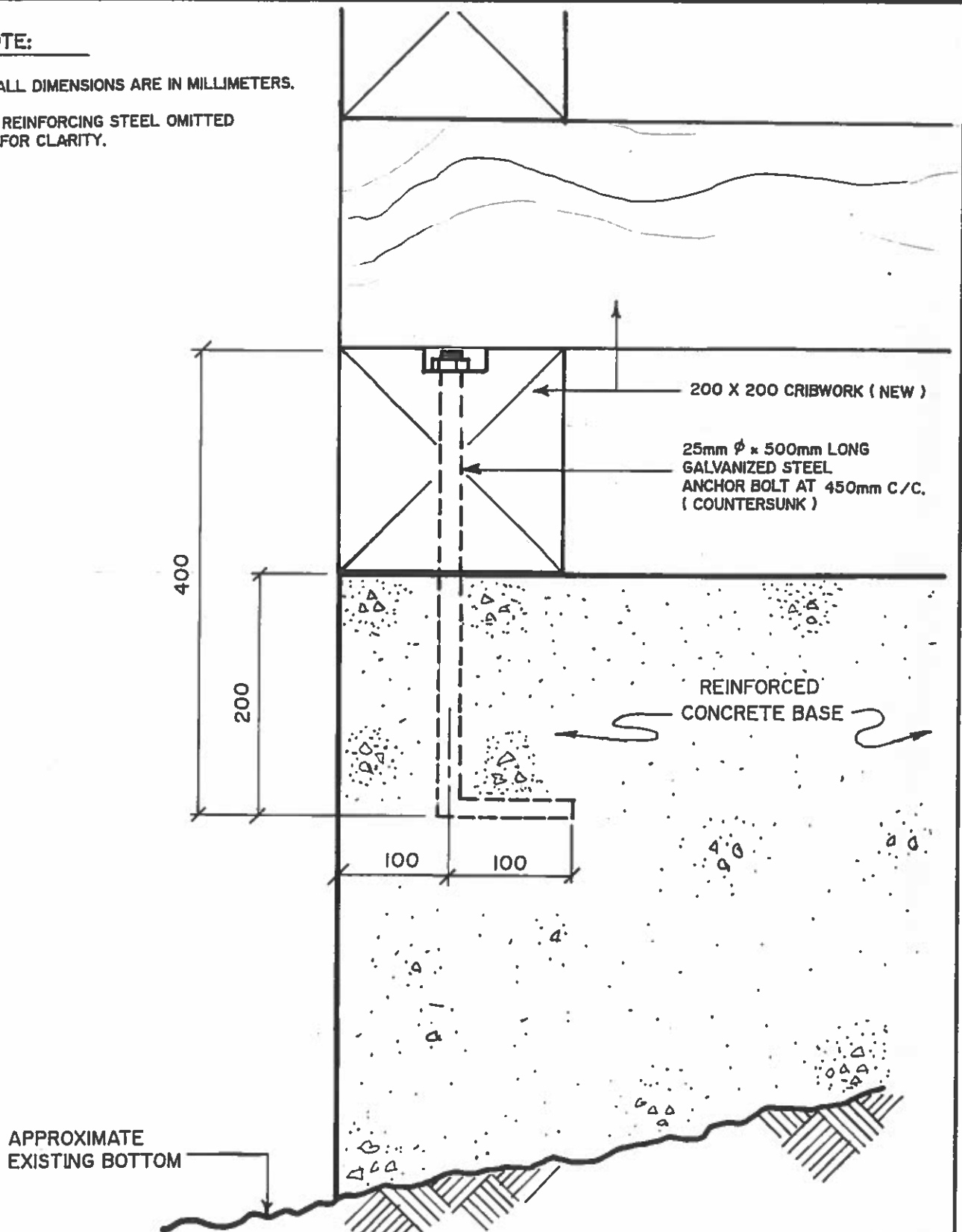
## NOTES

1. ALL DIMENSIONS IN MILLIMETERS.
2. WOOD PLANK DECKING AND TIMBER BEAM SIZES AS SPECIFIED.

 <b>Public Works Canada</b> <b>Travaux publics Canada</b>	Drawing title: Titre du dessin: <b>BEAM PROTECTION DETAIL</b> scale: échelle: 1 : 10	designed by: conçu par: <b>C. BOUCHER</b>
	date: <b>8 SEPTEMBER 1992</b>	drawn by: dessiné par: <b>L. STRONG</b> reviewed by: examiné par: <i>Keith Ridham</i> approved by: approuvé par: project no.: no. du projet: dwg. no.: dessin no.: <b>CB-17</b>

**NOTE:**

1. ALL DIMENSIONS ARE IN MILLIMETERS.
2. REINFORCING STEEL OMITTED FOR CLARITY.



Public Works  
Canada

Travaux publics  
Canada

Drawing title:  
Titre du dessin:

**TYPICAL ANCHOR BOLT DETAIL**

scale:  
échelle: 1:5

dpts:

SEPTEMBER 13, 1990

revisions:

designed by:  
conçu par: N. HOGAN

drawn by:  
dessiné par: L. STRONG

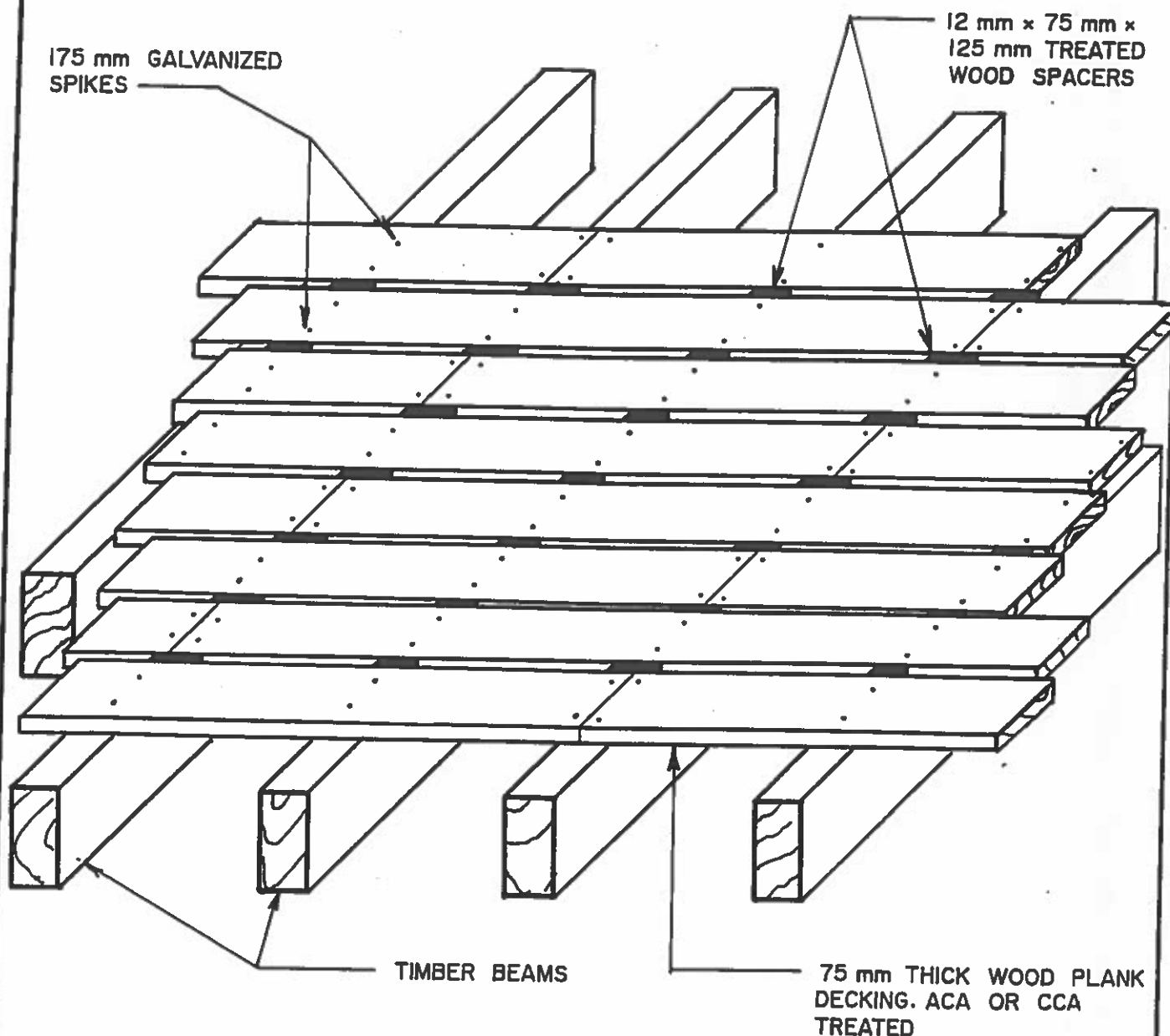
reviewed by:  
examiné par:

approved by:  
approuvé par:

project no.:  
no. du projet:


dwg. no.:  
dessin no.:

**CB-18**



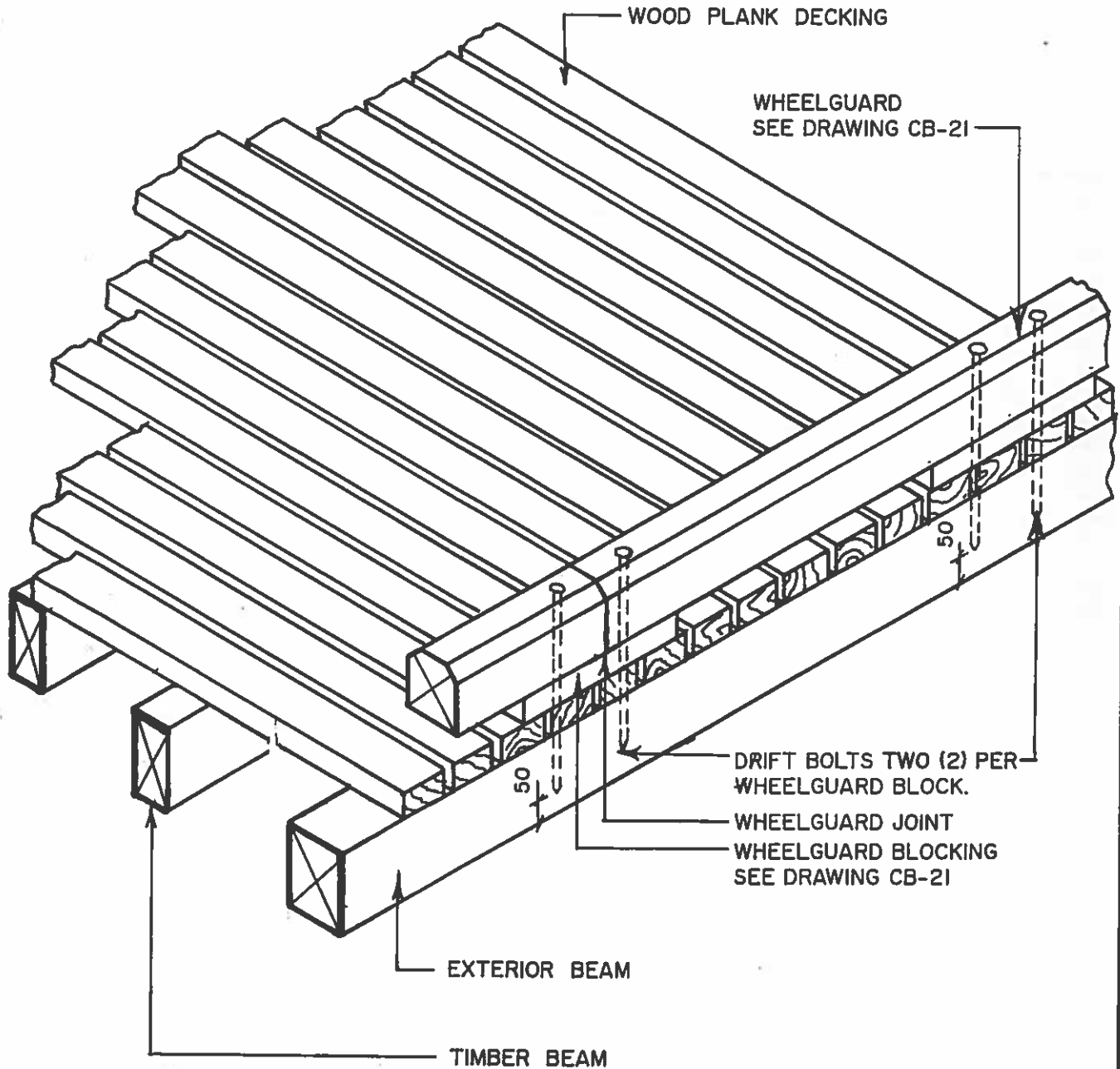
## NOTES

1. ALL DIMENSIONS IN MILLIMETERS.
2. WOOD PLANK DECKING AND TIMBER BEAM SIZES AS SPECIFIED.
3. FELT PROTECTION FOR BEAMS (as per CB-17) IS OMITTED FOR CLARITY.

 <b>Public Works Canada</b> <b>Travaux publics Canada</b>	Drawing title: Titre du dessin: <b>WOOD PLANK DECKING DETAIL</b> scale: échelle: 1:20 date: <b>8 SEPTEMBER 1992</b>	designed by: conçu par: <b>N. HOGAN</b> drawn by: dessiné par: <b>L. STRONG</b> reviewed by: examiné par: <i>Keith Dickham</i>
	revisions:	approved by: approuvé par: project no.: no. du projet: <div style="display: flex; justify-content: space-between;"> <div></div> <div><b>CB-20</b></div> </div>

## NOTES

1. ALL DIMENSIONS IN MILLIMETERS.
2. WHEELGUARD, WHEELGUARD BLOCKING, WOOD PLANK DECKING AND TIMBER BEAM SIZES AS SPECIFIED.



Public Works  
Canada

Travaux publics  
Canada

Drawing title:  
Titre du dessin:

**DETAIL - WHEELGUARD  
BOLTING TO PLANK DECKING**

scale:  
échelle: 1:20

date:

8 SEPTEMBER 1992

revisions:

designed by:  
conçu par: N. HOGAN

drawn by:  
dessiné par: L. STRONG

reviewed by:  
examiné par: *Keith Sidham*

approved by:  
approuvé par:

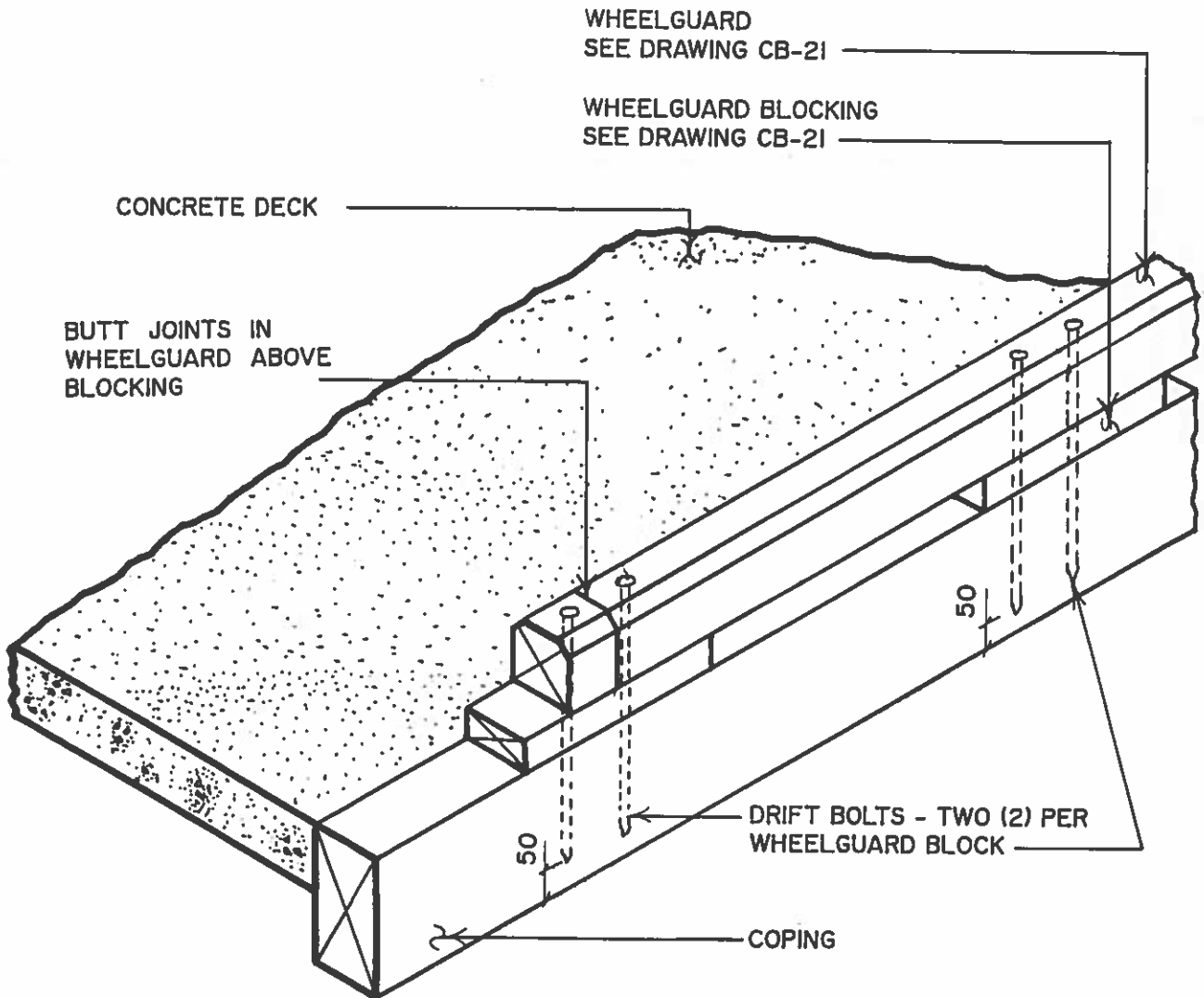
project no.:  
no. du projet:


dwg. no.  
dessin no.

CB-22

## NOTES :

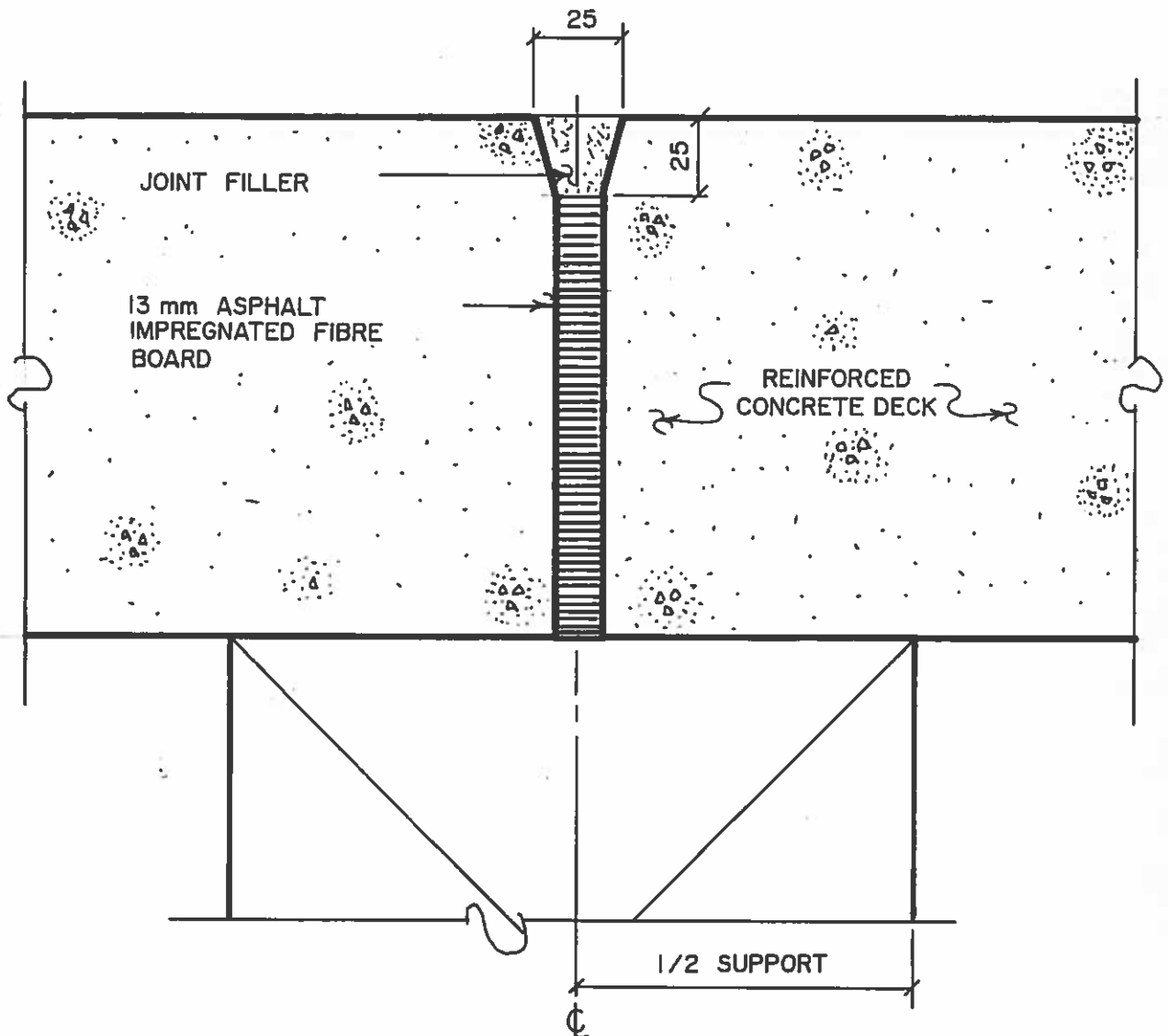
1. ALL DIMENSIONS IN MILLIMETERS
2. TIMBER SIZES AS SPECIFIED



 <b>Public Works Canada</b> <b>Travaux publics Canada</b>	Drawing title: Titre du dessin:		designed by: conçu par: <b>N. HOGAN</b>	
	scale: échelle: <b>1 : 20</b>		drawn by: dessiné par: <b>L. STRONG</b>	
<b>DETAIL - WHEELGUARD BOLTING TO COPING</b>	date: <b>SEPTEMBER 1992</b>		reviewed by: examiné par: <i>Keith Bidham</i>	
	revisions:		approved by: approuvé par:	
	project no.: no. du projet:		dwg. no.: dessin no.: <b>CB-23</b>	

# NOTES :

I. ALL DIMENSIONS IN MILLIMETERS.



Public Works  
Canada

Travaux publics  
Canada

Drawing title:  
Titre du dessin:

scale:  
échelle:

date SEPTEMBER 1992

revisions

designed by:  
conçu par: N. HOGAN

drawn by:  
dessiné par: L. STRONG

reviewed by:  
examiné par: Keith Ordham

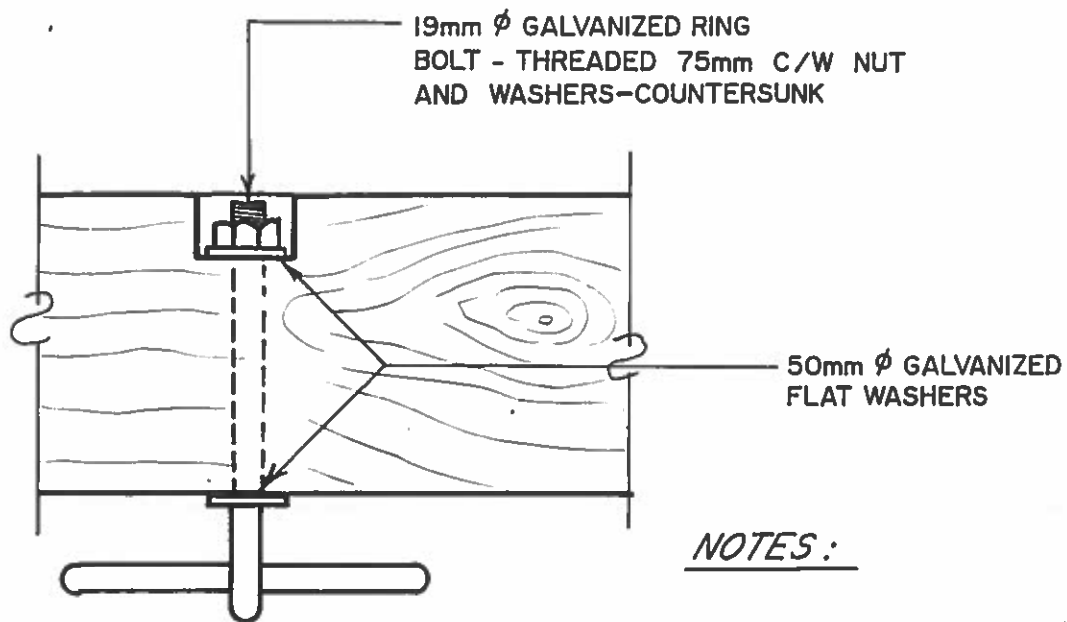
approved by:  
approuvé par:

project no.:  
no. du projet:

dwg no.:  
dessin no.:

CB-24

DETAIL - CONTROL  
JOINT FOR CRIBWORK

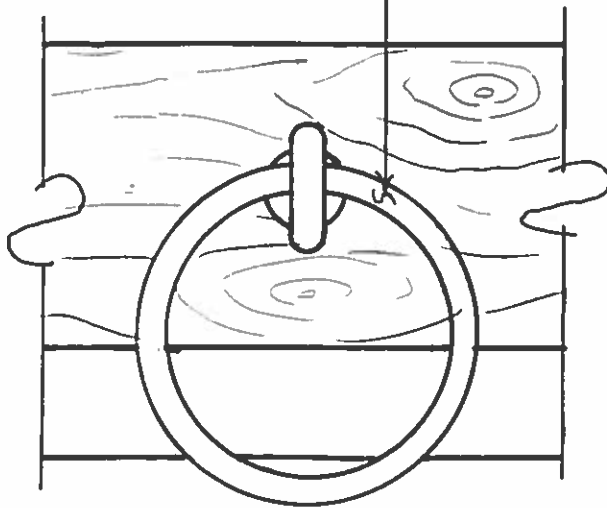


PLAN

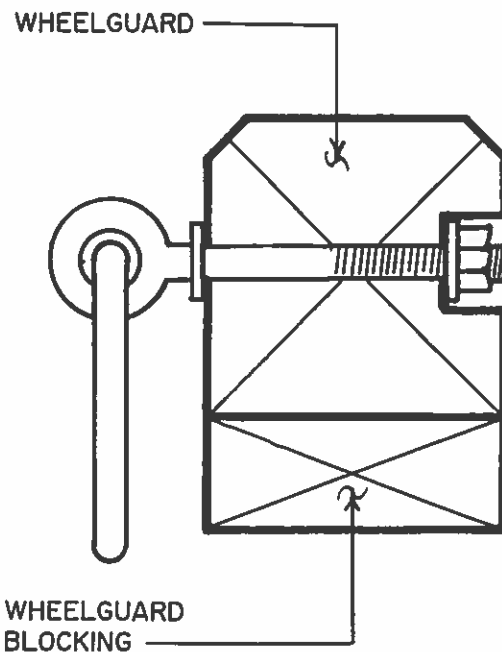
NOTES:

1. ALL DIMENSIONS IN MILLIMETERS
2. TIMBER SIZES AS SPECIFIED

150mm I.D. GALVANIZED  
MOORING RING FABRICATED  
FROM 19mm  $\phi$  STOCK



ELEVATION



TYPICAL SECTION



Public Works  
Canada

Travaux publics  
Canada

Drawing title:  
Titre du dessin:

scale:  
échelle: 1:5

date: SEPTEMBER 1992

revisions

designed by:  
conçu par: N. HOGAN

drawn by:  
dessiné par: L. STRONG

reviewed by:  
examiné par: Keith Didiham

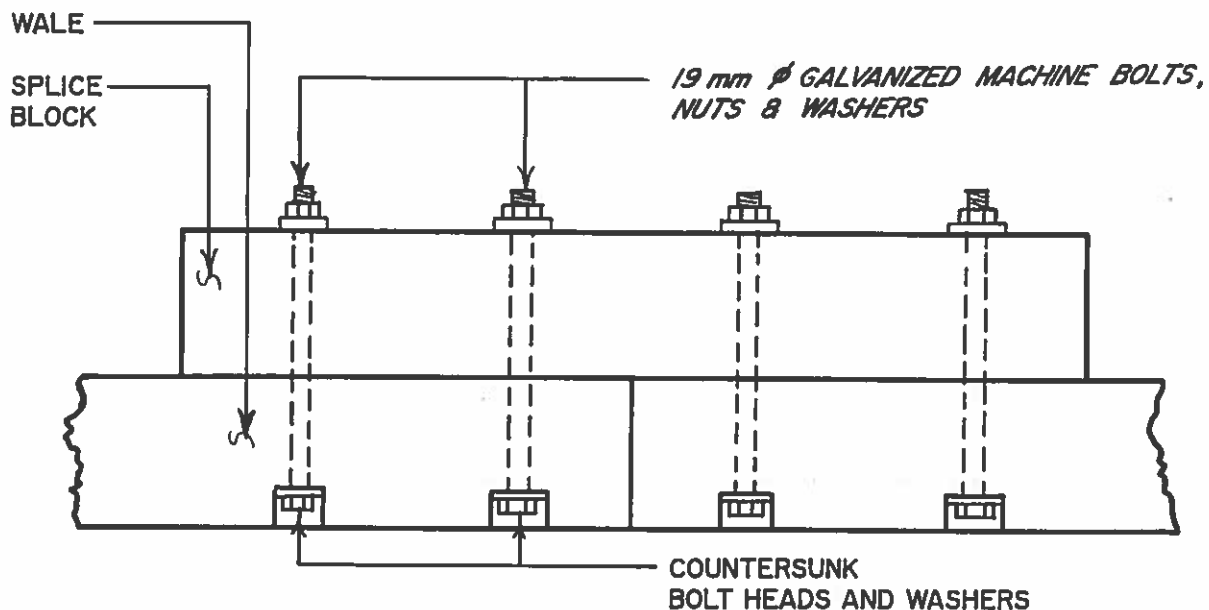
approved by:  
approuvé par:

project no.:  
no. du projet:

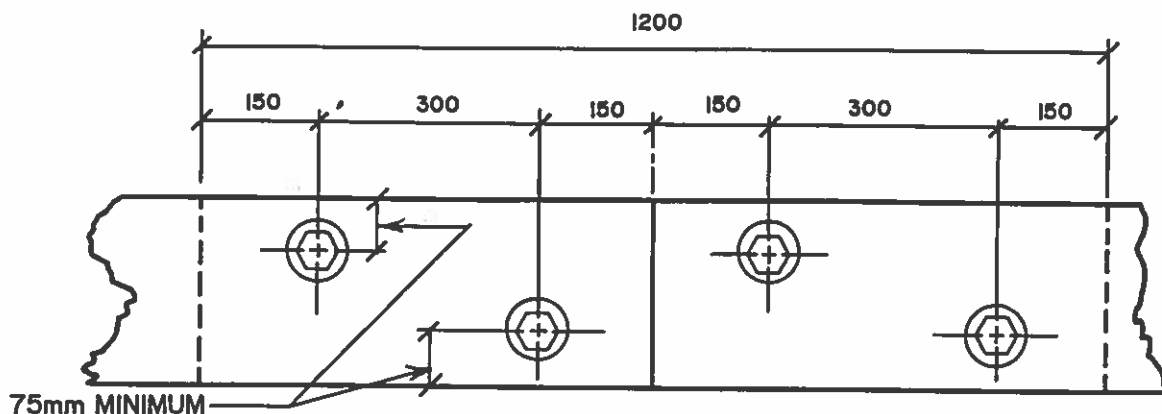
dwg no.:  
dessin no.:

CB-26

DETAIL - MOORING  
RING



PLAN



ELEVATION

NOTES:

1. ALL DIMENSIONS IN MILLIMETERS
2. TIMBER SIZES AS SPECIFIED



Public Works  
Canada

Travaux publics  
Canada

Drawing title:  
Titre du dessin:

**DETAIL - SPLICE IN WALE**

scale:  
échelle: 1:20

date: **SEPTEMBER 1992**

revisions:

designed by:  
conçu par: **N. HOGAN**

drawn by:  
dessiné par: **L. STRONG**

reviewed by:  
examiné par: *Keith Rishen*

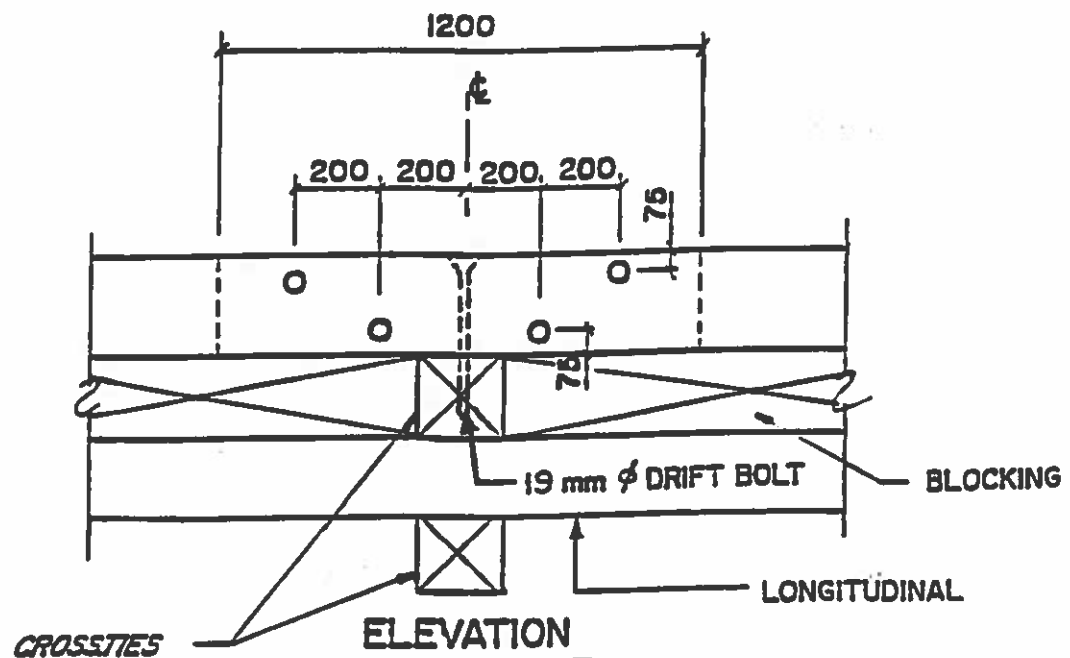
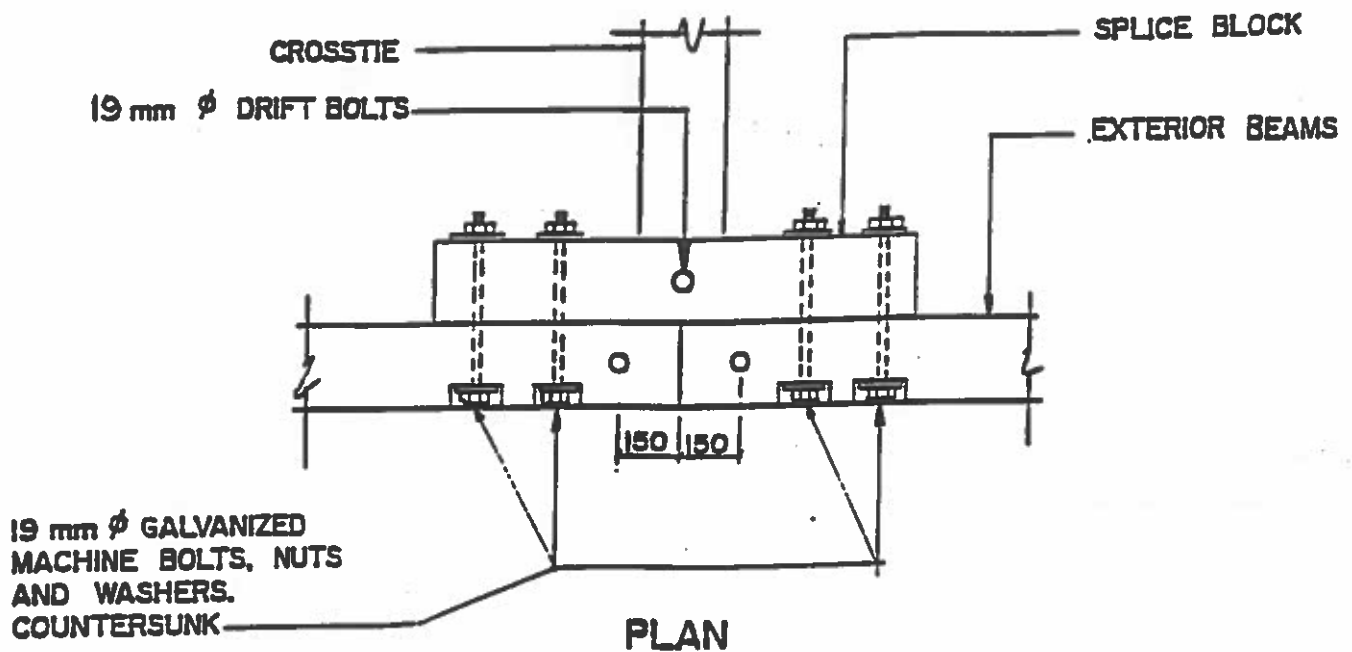
approved by:  
approuvé par:

project no.:  
no. du projet:

dwg. no.:  
dessin no.:

**CB-27**





### NOTES :

1. ALL DIMENSIONS IN MILLIMETERS.
2. TIMBER SIZES AS SPECIFIED



Public Works  
Canada

Travaux publics  
Canada

Drawing title:  
Titre du dessin:

**PLAN AND ELEVATION**

scale:  
échelle: 1:20

date: SEPTEMBER 1992

revisions:

designed by:  
conçu par: N. HOGAN

date:

drawn by:  
dessiné par: D. BURSEY

reviewed by:  
examiné par: *Keith Siddham*

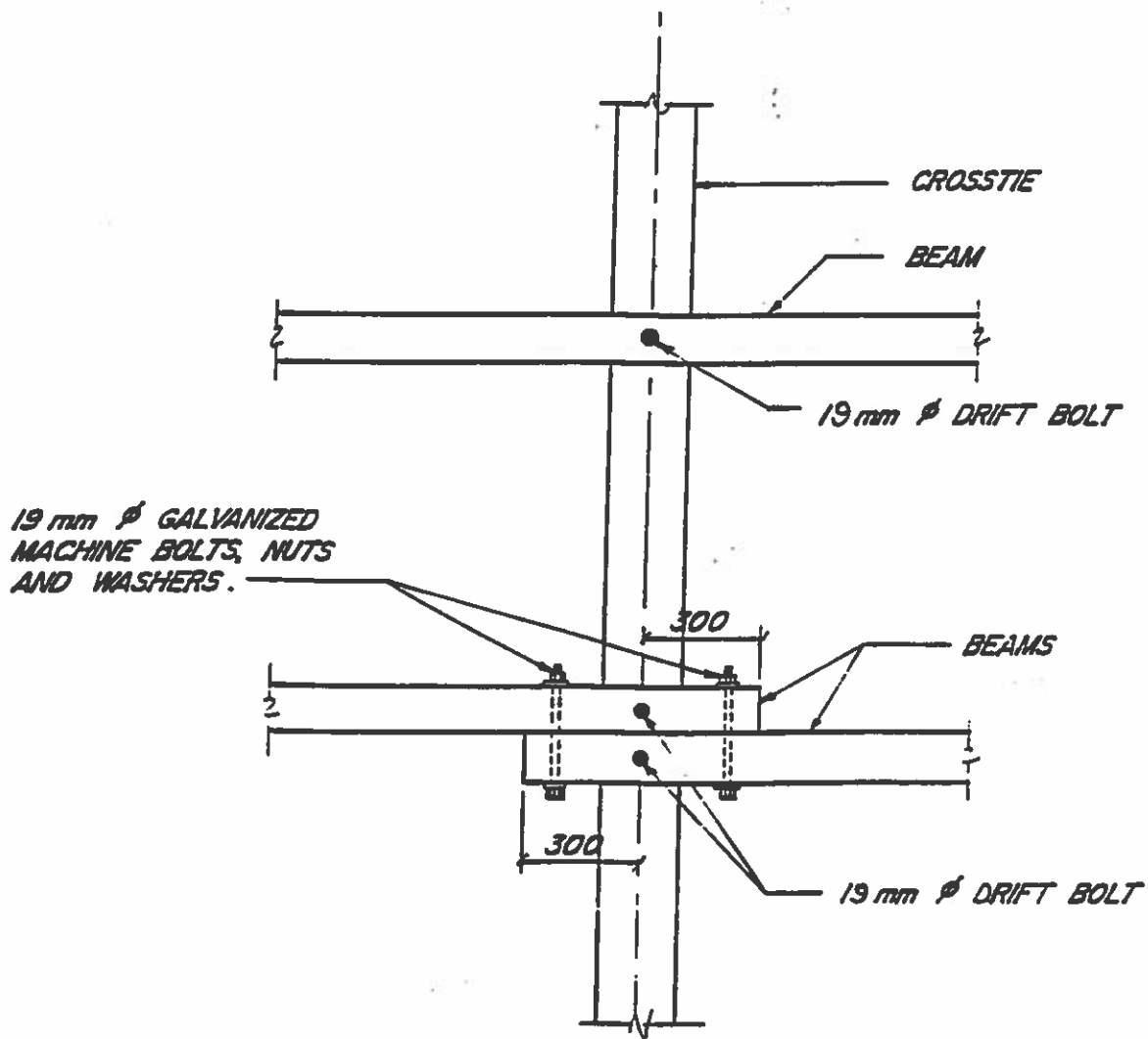
approved by:  
approuvé par:

project no.:  
no. du projet:

dwg. no.  
dessin no.

CB - 28

**DETAIL - EXTERIOR  
BEAM SPLICE**



### NOTES:

- 1 ALL DIMENSIONS IN MILLIMETERS
- 2 TIMBER SIZES AS SPECIFIED



Public Works Canada  
Travaux publics Canada

Drawing title:  
Titre du dessin:

PLAN

scale:  
échelle: 1:20

date: SEPTEMBER 1992

designed by:  
conçu par: K. DIDHAM

date

drawn by:  
dessiné par: D. BURSEY

reviewed by:  
examiné par: Keith Airdham

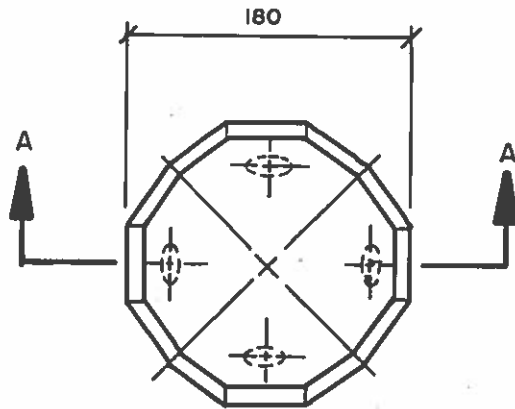
approved by:  
approuvé par:

project no.:  
no. du projet:

dwg. no.  
dessin no.

CB - 29

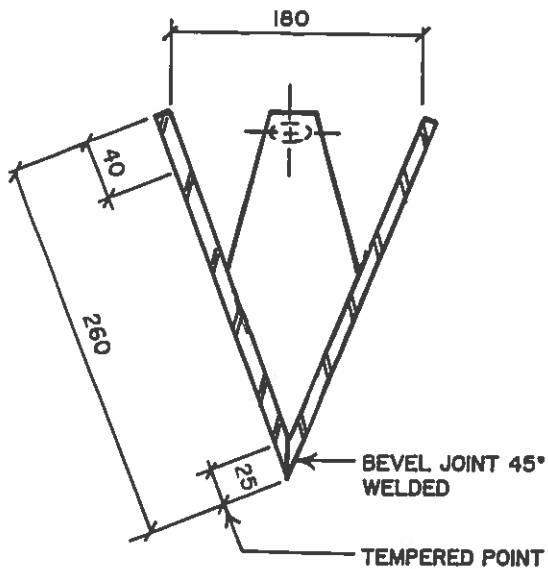
DETAIL - BOLTING  
OF INTERIOR BEAMS



PLAN

NOTE:

1. 4 - 10mm  $\phi$  x 150 LARGE SPIKE  
IN EACH PILE SHOE.



SECTION "A - A"

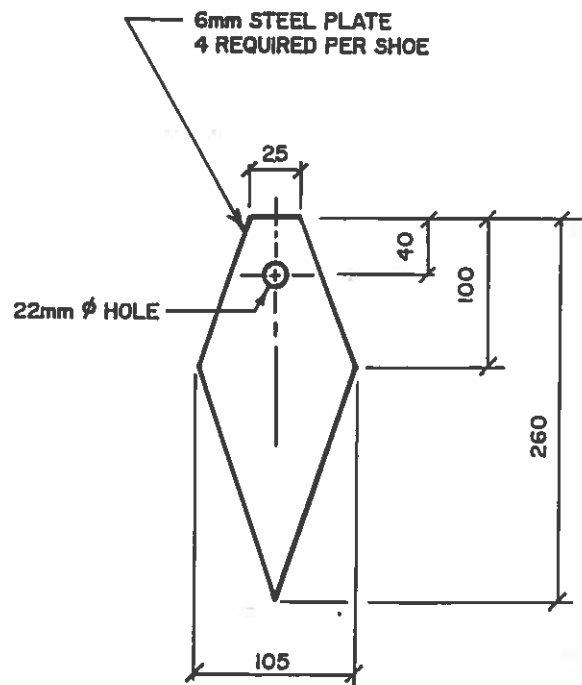


PLATE DETAIL



Public Works  
Canada

Travaux publics  
Canada

Drawing title:  
Titre du dessin:

TIMBER PILE SHOE DETAIL

scale:  
échelle: 1:5

date:

OCTOBER 10, 1990

revisions

designed by:  
conçu par:

drawn by:  
dessiné par: L. STRONG

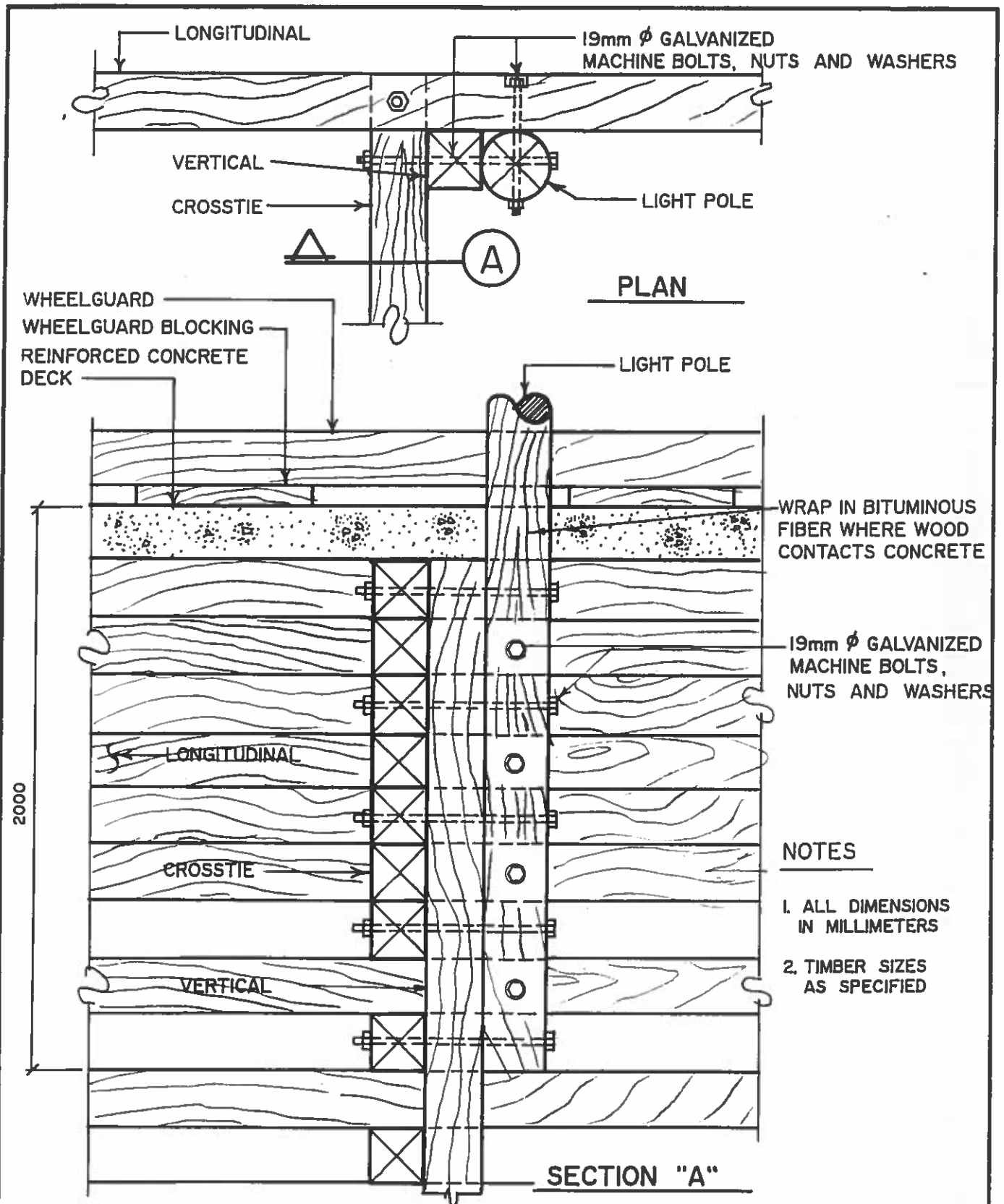
reviewed by:  
examiné par:


approved by:  
approuvé par:

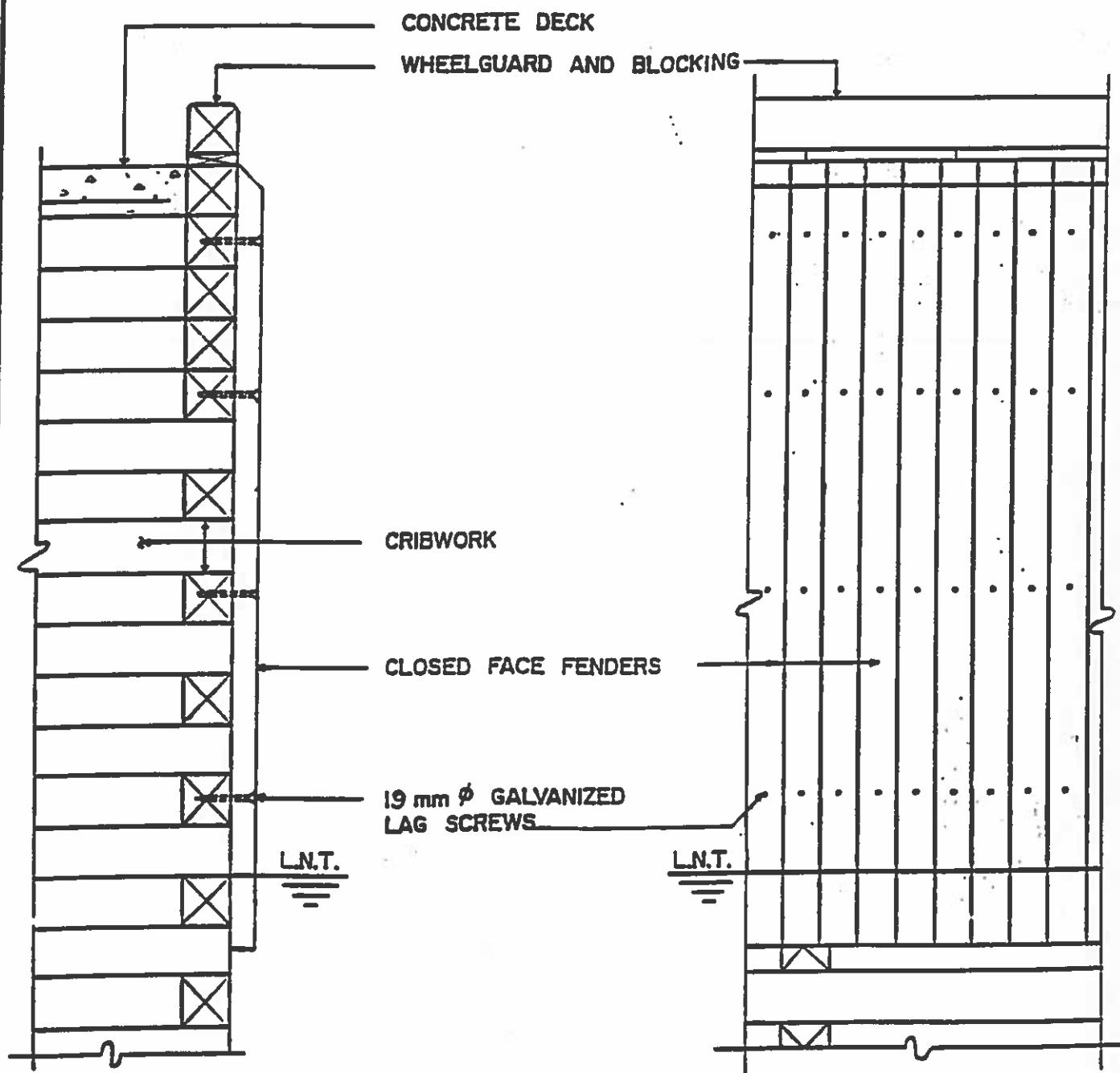
project no.:  
no. du projet

dwg. no.:  
dessin no.

**CB-30**



 <b>Public Works Canada</b> <b>Travaux publics Canada</b>	Drawing title: Titre du dessin:  scale: échelle: 1:20	designed by: conçu par: <b>R. LEE</b> <b>MAY, 1985</b> drawn by: dessiné par: <b>L. STRONG</b> reviewed by: examiné par: <i>[Signature]</i>
<b>DETAIL - LIGHTPOLE IN CRIBWORK</b>	date: <b>SEPTEMBER 1992</b> revisions:	approved by: approuvé par: project no.: no. du projet: <b>CB-32</b> dwg. no.: dessin no.:



SECTION

ELEVATION

NOTES

1. ALL DIMENSIONS IN MILLIMETERS
2. TIMBER SIZES AS SPECIFIED



Public Works  
Canada

Travaux publics  
Canada

Drawing title  
Titre du dessin:

ELEVATION AND SECTION

scale:  
échelle: 1:25

date: SEPTEMBER 1992

revisions:

designed by:  
conçu par: N. HOGAN

date

drawn by:  
dessiné par: D. BURSEY

reviewed by:  
examiné par: *K. Bidham*

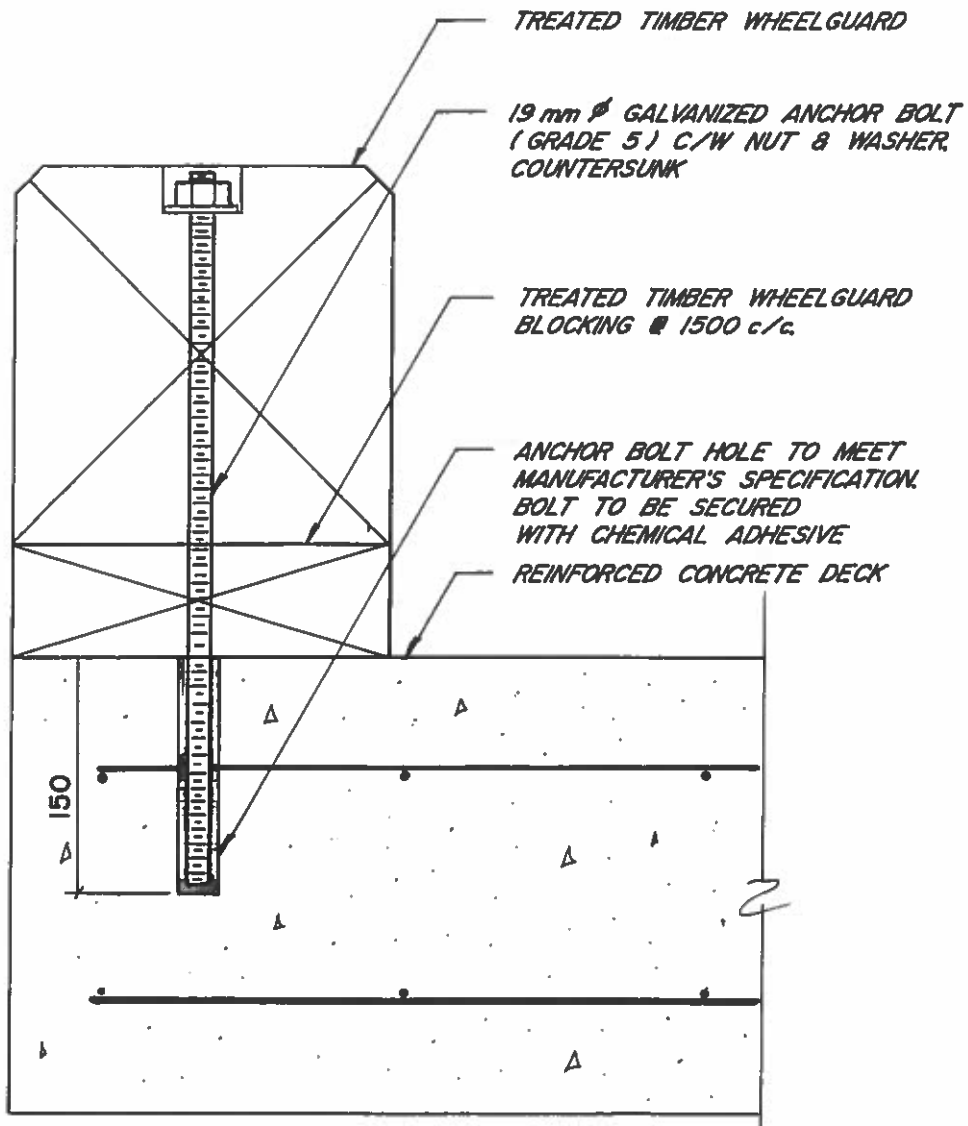
approved by:  
approuvé par:

project no.:  
no. du projet

dwg. no.  
dessin n°


CB - 34

TYPICAL DETAIL —  
CLOSED FACE FENDERS

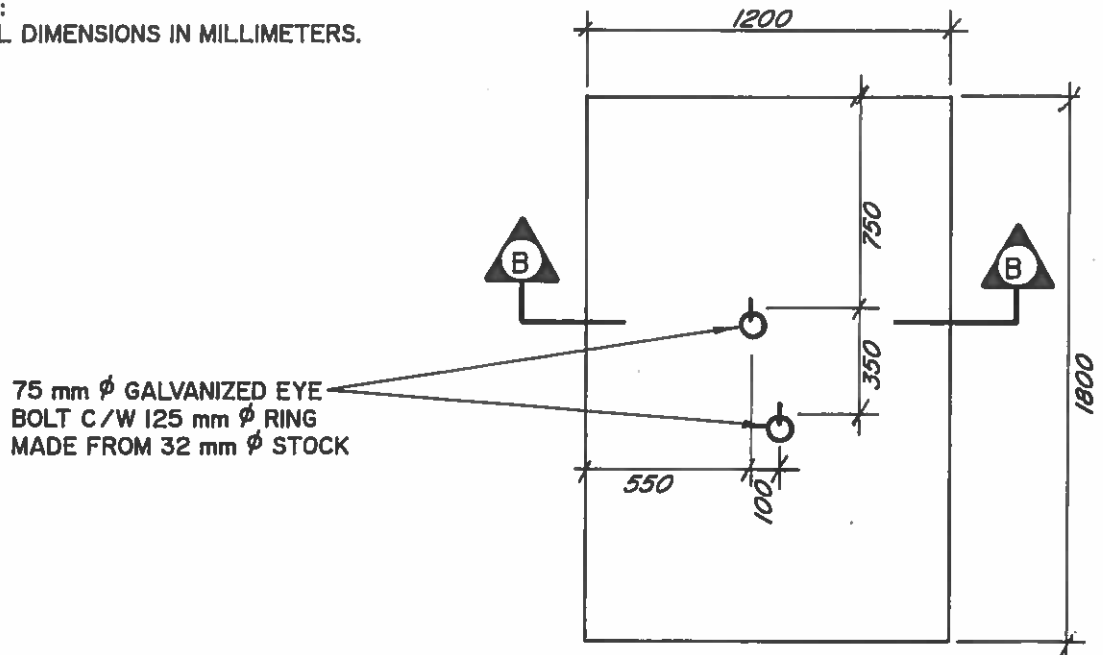


**NOTE:**

1. ALL DIMENSIONS IN MILLIMETERS
2. TIMBER SIZES AS SPECIFIED

 Public Works Canada    Travaux publics Canada	Drawing title: Titre du dessin:	designed by conçu par: <i>N. HOGAN</i>	date
	scale: échelle: <i>1:5</i>	drawn by dessiné par: <i>D. BURSEY</i>	reviewed by examiné par: <i>Keith Sidham</i>
<b>DETAIL - WHEELGUARD BOLTING TO CONCRETE DECK</b>	date: <b>SEPTEMBER 1992</b>	approved by approuvé par:	project no.: no. du projet:
	revisions	approved by approuvé par:	dwg. no. dessin no.: <i>C.B. - 38</i>

NOTE :  
1. ALL DIMENSIONS IN MILLIMETERS.



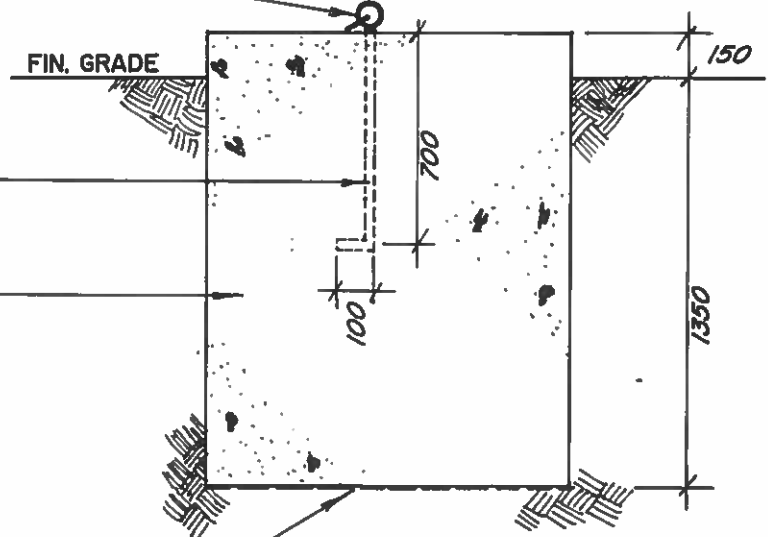
PLAN

75 mm  $\phi$  GALVANIZED EYE  
BOLT C/W 125 mm  $\phi$  RING  
MADE FROM 32 mm  $\phi$  STOCK

32 mm  $\phi$  GALVANIZED  
ANCHOR BOLT

CONCRETE HAULOUT BLOCK

0.15 mm POLYETHYLENE  
VAPOUR BARRIER



SECTION B - B



Public Works Canada  
Travaux publics Canada

Drawing title: MAIN HAULOUT  
Titre du dessin: BLOCK DETAIL

scale: 1 : 20  
échelle:

date: AUGUST 1991

designed by: K. DIDHAM  
conçu par:

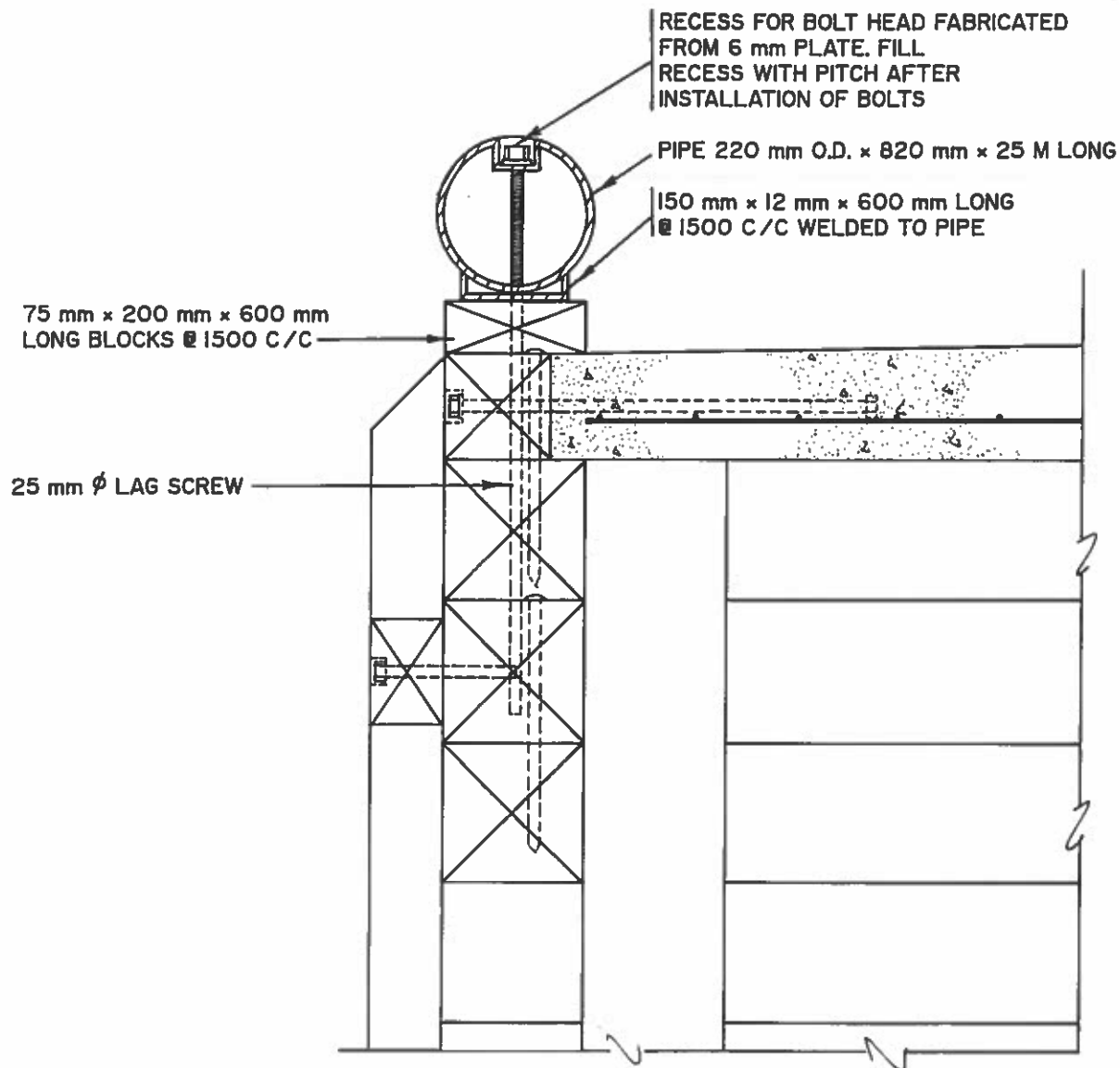
drawn by: A. PETERS  
dessiné par:


reviewed by: Keith Didham  
examiné par:

approved by:  
approuvé par:

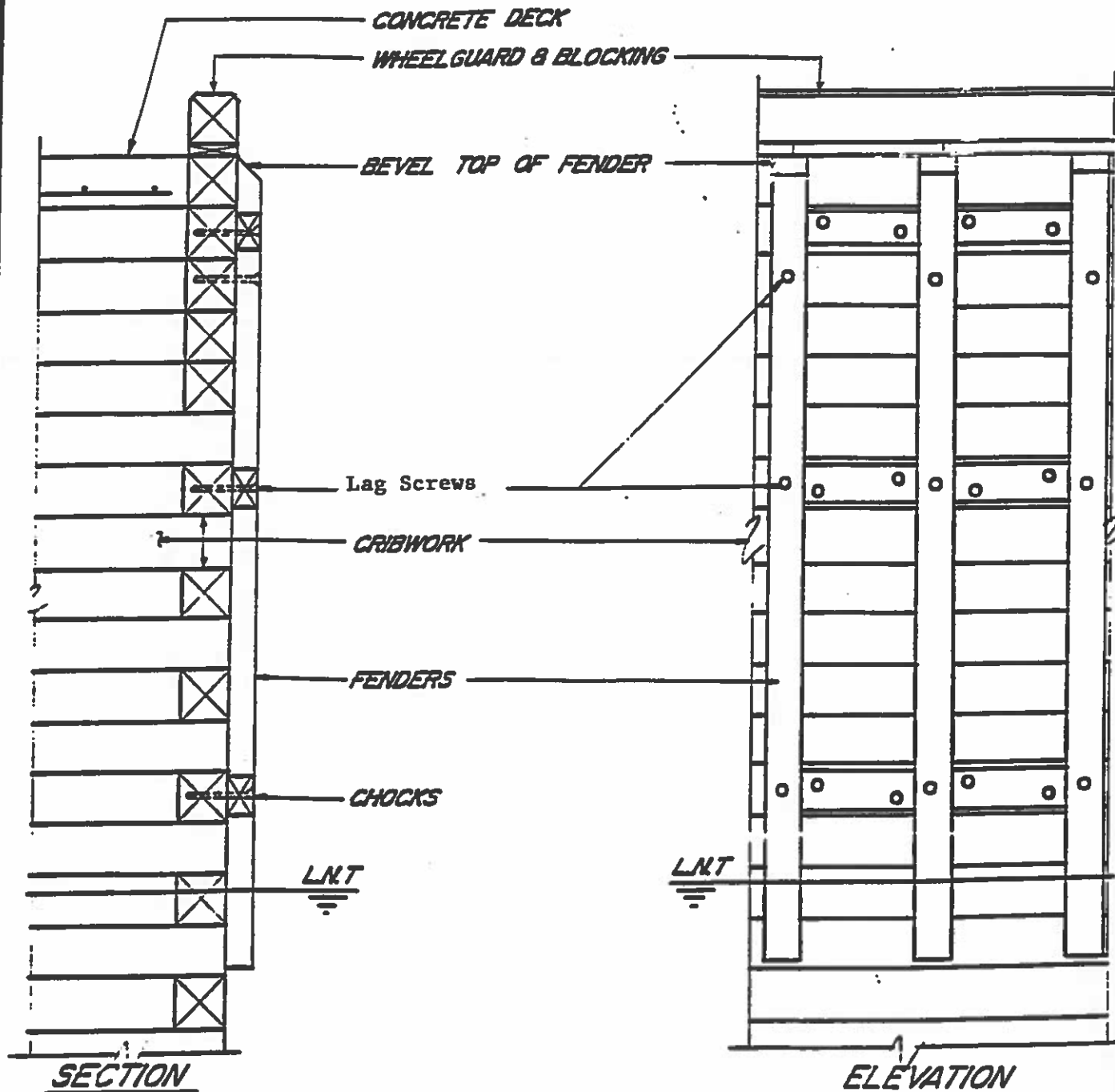
project no.:  
no. du projet:

dwg. no.:  
dessin no.:  
CB - 39



 Public Works Canada Travaux publics Canada	Drawing title: <u>PIPE WHEEL GUARD</u> Titre du dessin: <u>IN EXISTING DECK</u>		designed by: <u>K. DIDHAM</u>	date:
	scale: <u>1 : 10</u> échelle:		drawn by: <u>A. PETERS</u> dessiné par:	reviewed by:
date:		revisions:	approved by:	
		project no.: no. du projet:	dwg. no.: dessin no.: <u>CB - 42</u>	





**NOTES:**

- 1 ALL DIMENSIONS IN MILLIMETERS
- 2 TIMBER SIZES AS SPECIFIED



Public Works  
Canada

Travaux publics  
Canada

Drawing title:  
Titre du dessin:

scale:  
échelle: 1:25

date: SEPTEMBER 1992

designed by:  
conçu par: KD

drawn by:  
dessiné par: DB

reviewed by:  
examiné par: *Kevin Bidham*

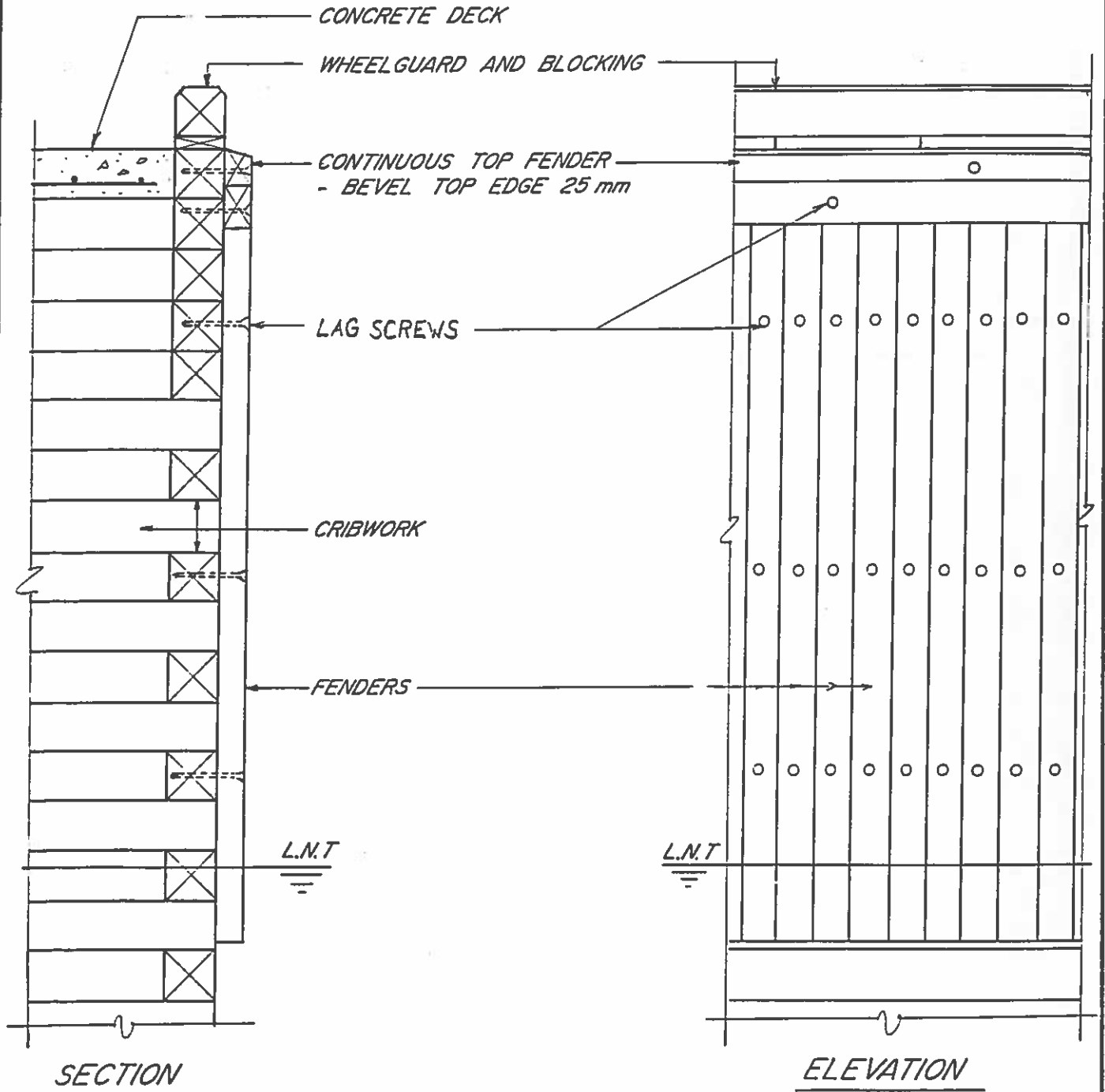
approved by:  
approuvé par:

project no.:  
no. du projet:

dwg. no.:  
dessin no.

CB - 46

**DETAIL - FENDERS  
AND CHOCKS**



NOTES:

1. ALL DIMENSIONS IN MILLIMETERS
2. TIMBER SIZES AS SPECIFIED



Public Works Canada  
Travaux publics Canada

Drawing title  
Titre du dessin:

scale  
échelle: 1:25

date: SEPTEMBER 1992

revisions

designed by  
conçu par: KD date

drawn by  
dessiné par: DB

reviewed by  
examine par: Keith Dierksen

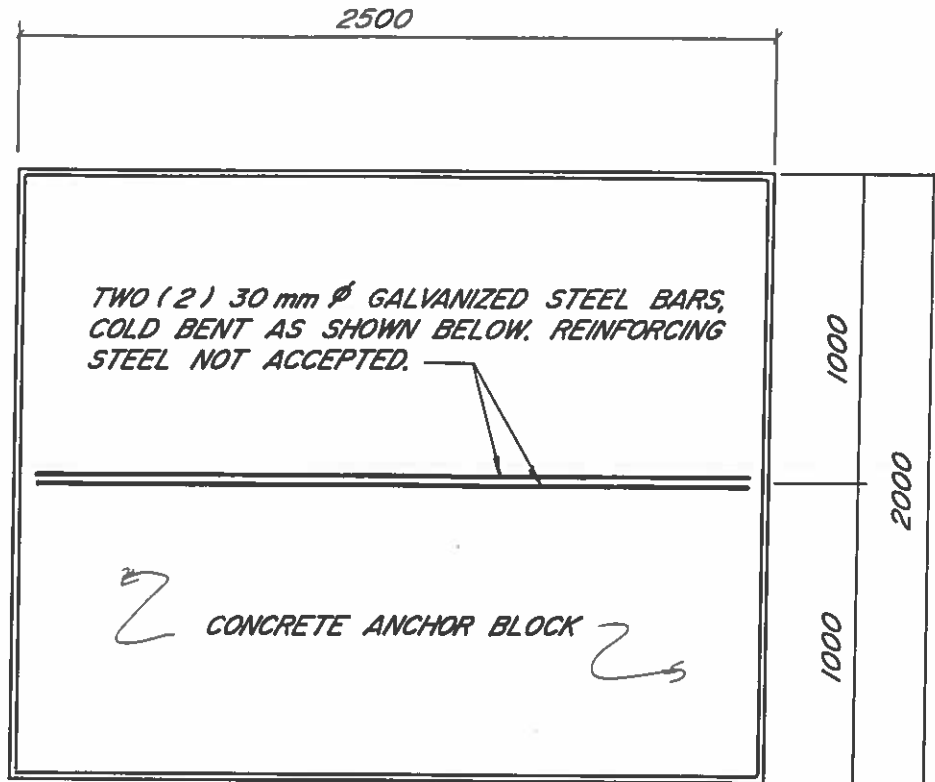
approved by  
approuvé par:

project no.:  
no. du projet:

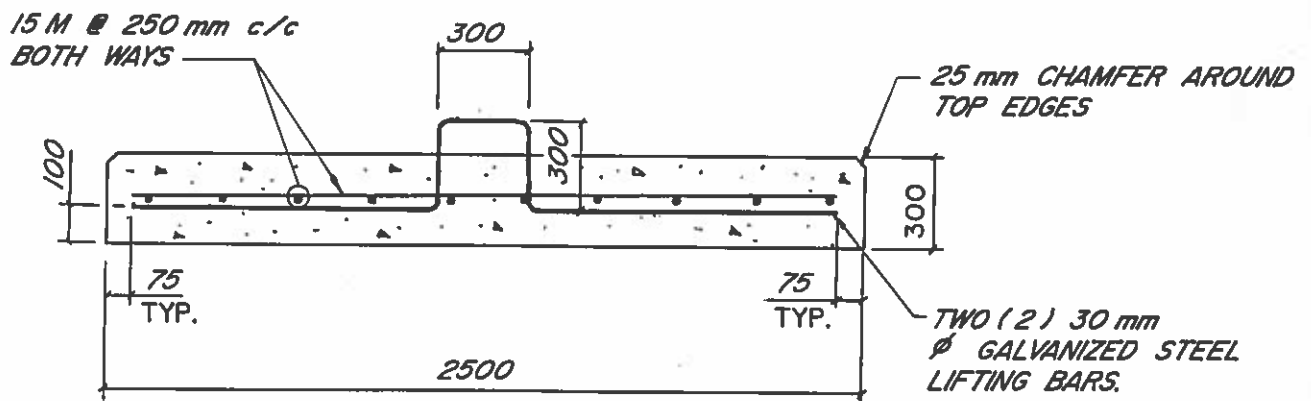
dwg. no.:  
dessin no.:

CB - 47

DETAIL -  
HORIZONTAL FENDERS



PLAN



SECTION

NOTES:

1. ALL DIMENSIONS IN MILLIMETERS.



Public Works  
Canada

Travaux publics  
Canada

Drawing title:  
Titre du dessin:

ANCHOR BLOCK DETAIL

scale:  
échelle: 1:2.5

date: NOVEMBER 1992

revisions

designed by: K. DIDHAM date

drawn by:  
dessiné par: D. BURSEY

reviewed by:  
examiné par: Keith Didham

approved by:  
approuvé par:

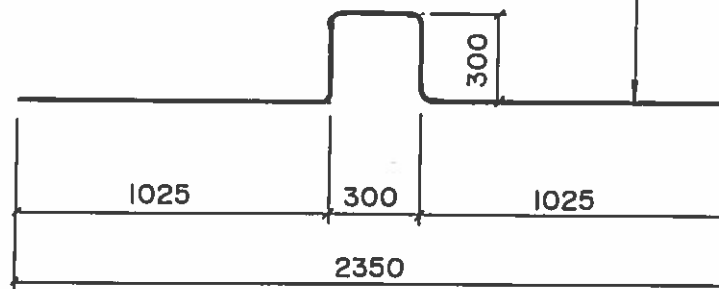
project no.:  
no. du projet:

dwg. no.:  
dessin no.:

CB - 53

FLOATING WHARF  
ACCESSORIES


30 mm  $\phi$  COLD BENT ROUND STEEL BAR  
( GALVANIZED )

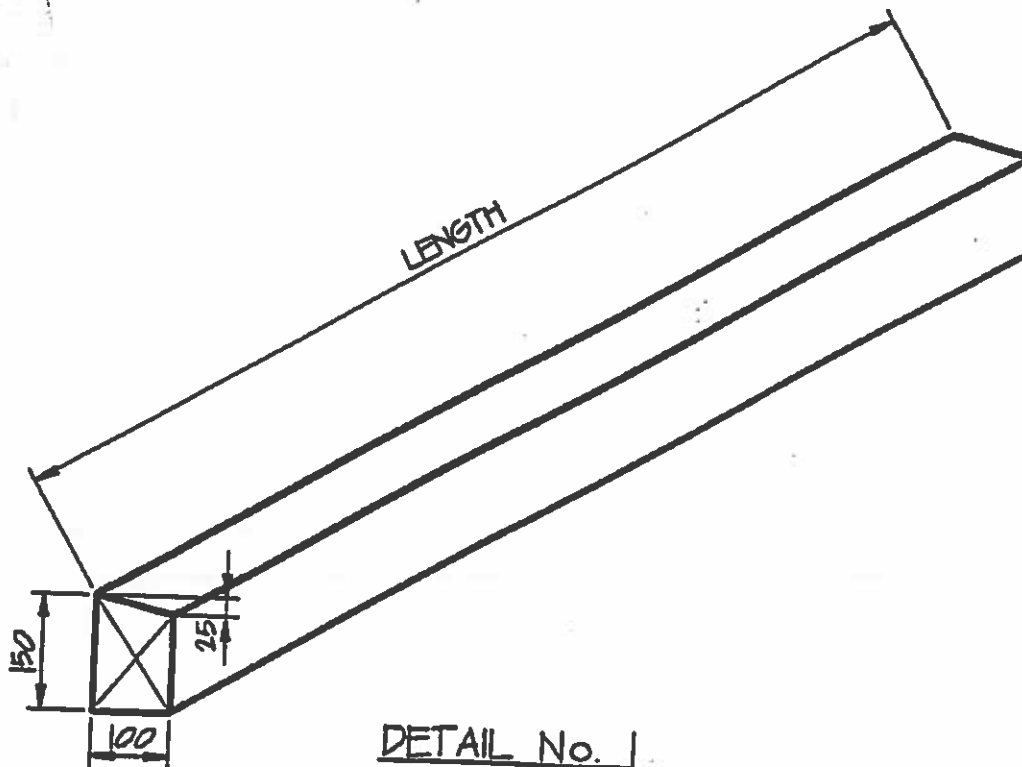


ANCHOR BLOCK LIFTING BAR

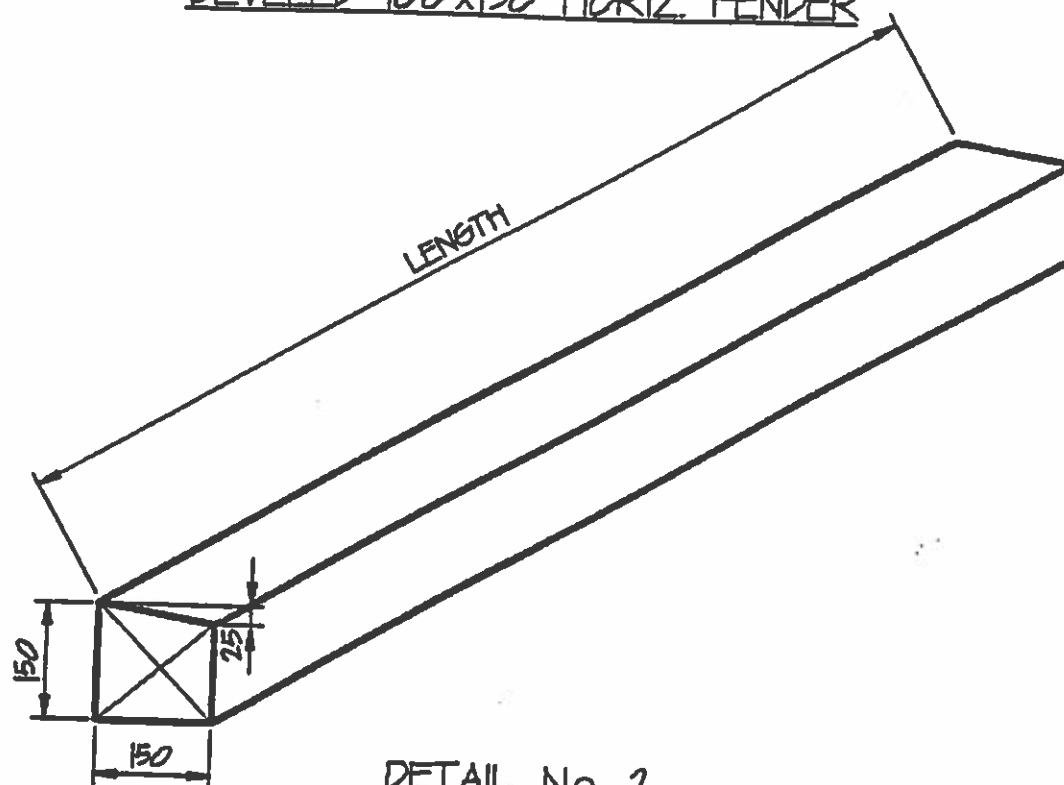
NOTES:

1 ALL DIMENSIONS IN MILLIMETERS.


 Public Works Canada    Travaux publics Canada	Drawing title: Titre du dessin:	designed by: <i>K. DIDHAM</i> date	
	scale: échelle: <i>1:2.5</i>	drawn by: dessiné par: <i>D. BURSEY</i>	
<u>FLOATING WHARF</u> <u>ACCESSORIES</u>	date: <i>NOVEMBER 1992</i> revisions:	reviewed by: examiné par: <i>K. Didham</i>	
		approved by: approuvé par: project no.: no. du projet:    dwg. no.: dessin no.: <i>CB - 54</i>	

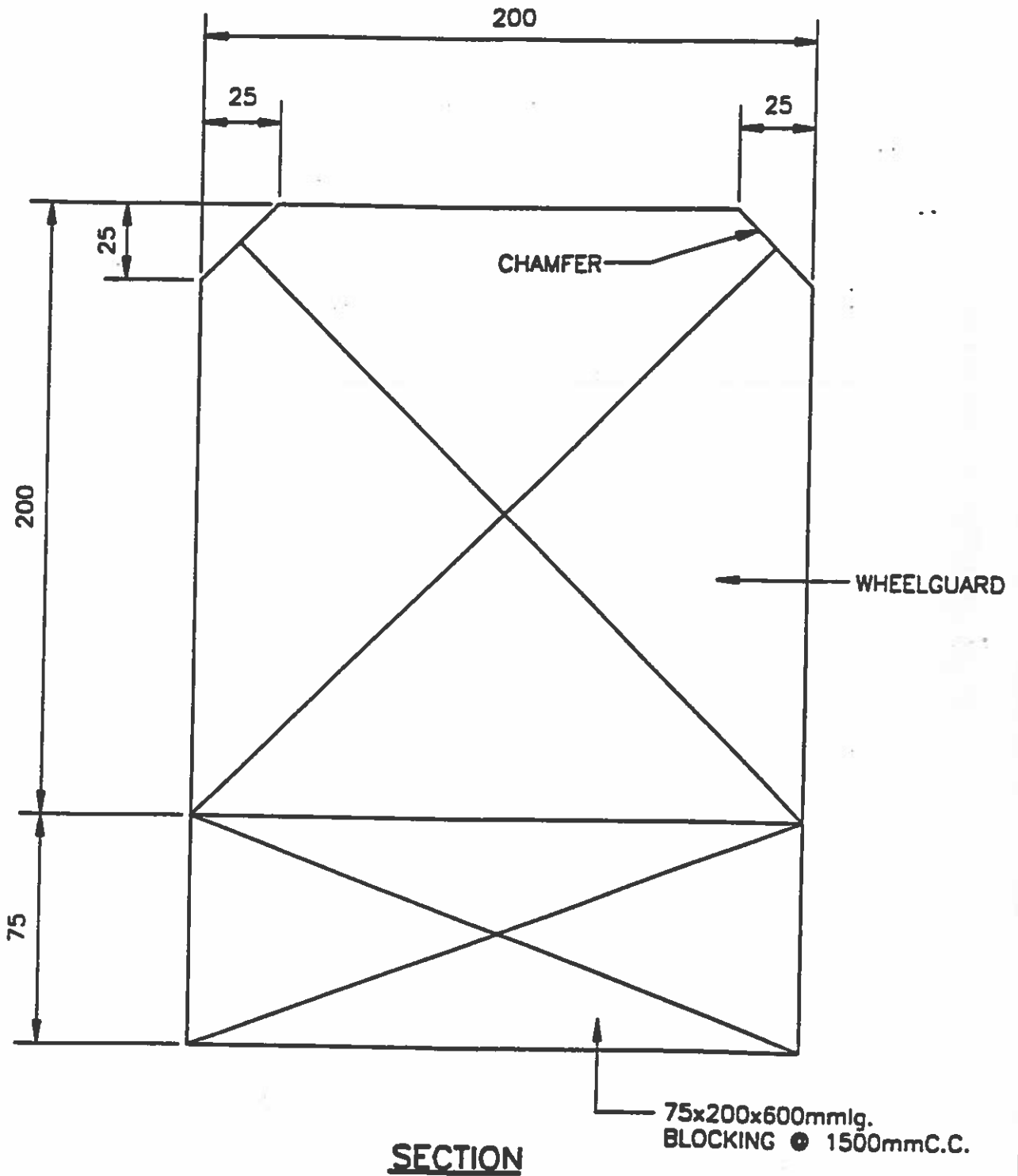


DETAIL No. 1  
BEVELED 100x150 HORIZ. FENDER



DETAIL No. 2  
BEVELED 150x150 HORIZ. FENDER

 Public Works and Government Services Canada Travaux publics et Services gouvernementaux Canada	Drawing title Titre du dessin <b>ISOMETRICS</b>  scale échelle <b>1:10</b>	designed by conçu par _____ date: _____ drawn by dessiné par <b>DB</b> reviewed by examiné par _____	
<u>TYPICAL HORIZONTAL FENDER DETAIL</u>	date: <b>AUG 1994</b>  revisions: _____	approved by approuvé par _____ project no. no. du projet _____ desig. no. dessin no. <b>CD-60</b>	



Public Works and  
Government Services  
Canada

Travaux publics et  
Services gouvernementaux  
Canada

**WHEELGUARD  
DETAIL**

PW/GSC OCT. 94

D. SUHL OCT. 94

NL-20