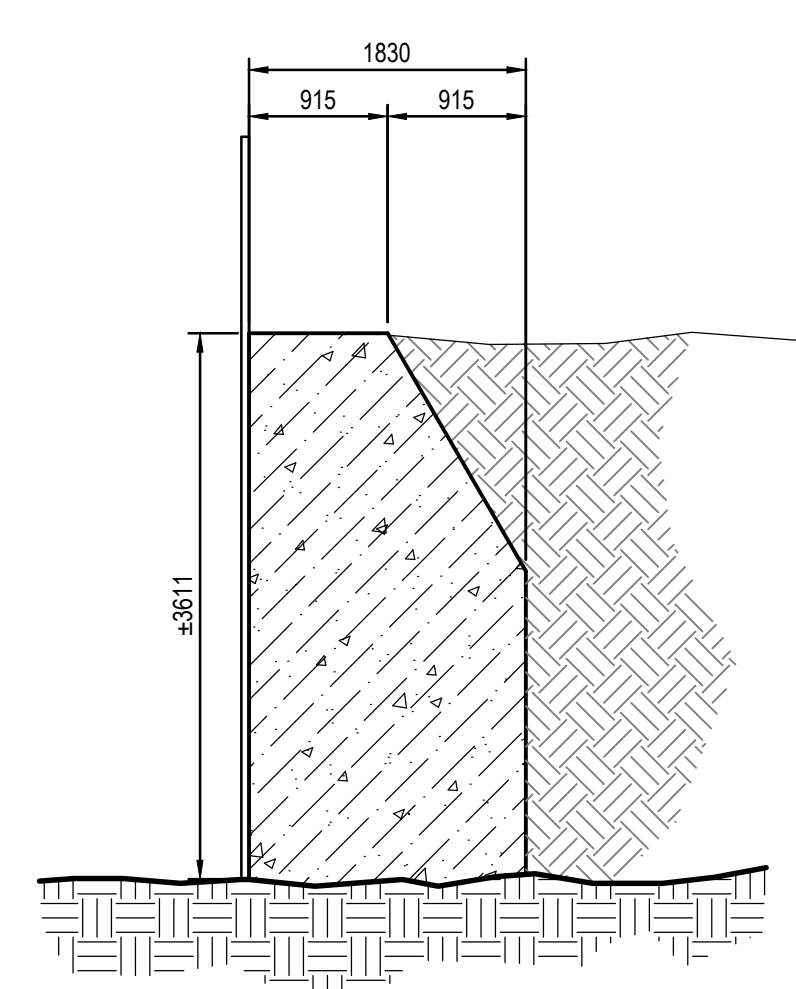
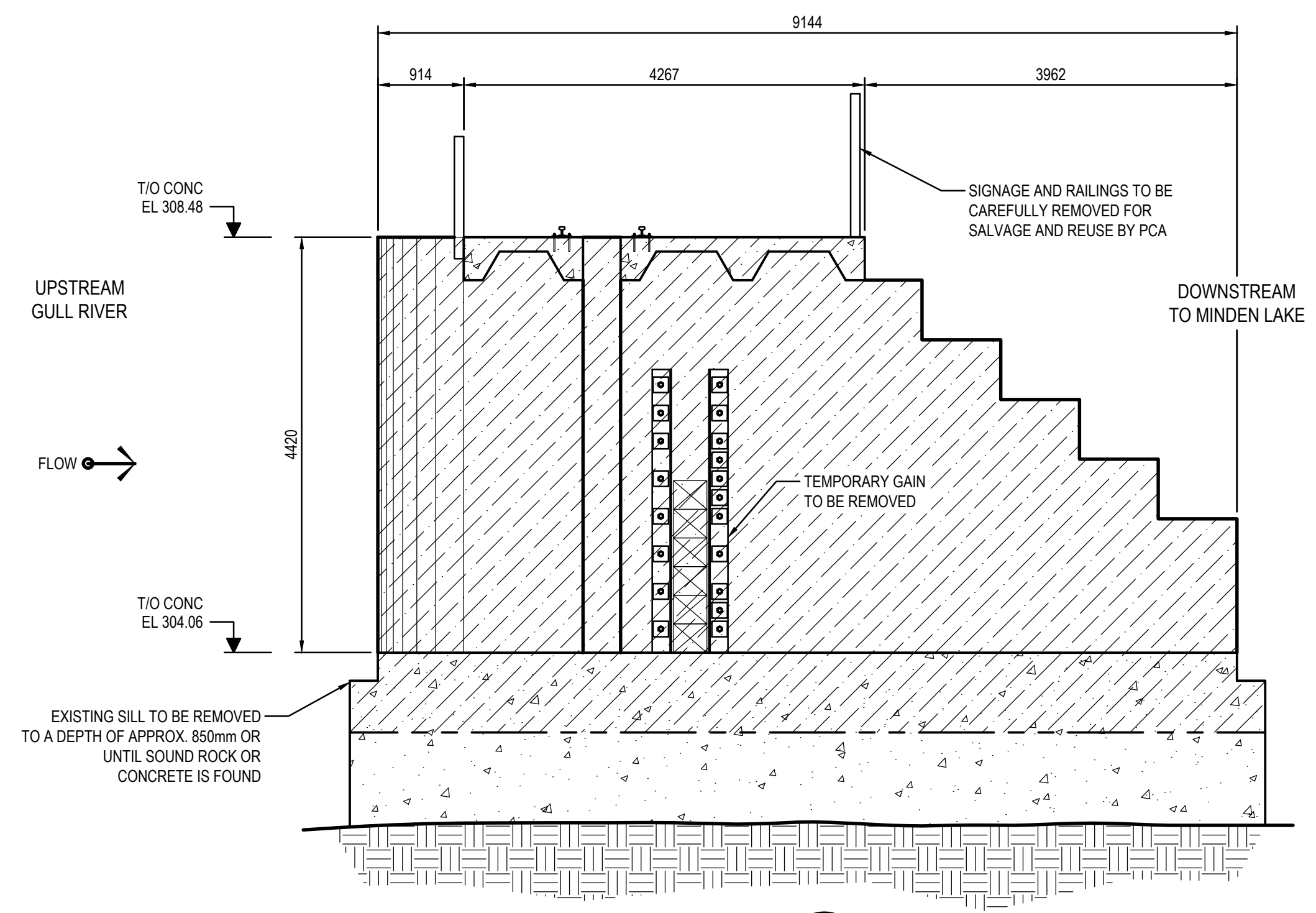


PLAN VIEW
1:100



SECTION B
1:50



SECTION A
1:50



- NOTES:
- WINCHES TO BE REMOVED AND REINSTALLED AS DESCRIBED IN THE SPECIFICATION SECTION 011100 IN ORDER TO MAINTAIN STAGED OPERATIONS OF THE DAM. DAM OPERATORS MUST BE PROVIDED ACCESS TO THE OPERATING EQUIPMENT AT ALL TIMES.
 - ALL EXISTING CONDUIT TO BE DISPOSED OF. NEW CONDUIT TO SUIT NEW GAUGE LAYOUT ON DRAWING 107 TO BE SUPPLIED BY CONTRACTOR.
 - DIMENSIONS ON DRAWINGS ARE APPROXIMATE AND TAKEN FROM RECORD DRAWINGS. ACTUAL DIMENSION MAY VARY.
 - TEMPORARY ANCHOR IS REQUIRED TO KEEP EXISTING SAFETY BOOM IN PLACE.
 - PRIOR TO DEMOLITION OF EXISTING STRUCTURE, CONTRACTOR TO ESTABLISH REFERENCE POINTS (MIN. 4) TO ALLOW TRANSFER OF COORDINATES AND ELEVATIONS TO THE NEW BENCHMARKS ON THE NEW STRUCTURE.

FOR TENDER

- LEGEND:
- DIRECTION OF WATER FLOW
 - TREES
 - BRUSH (PLAN VIEW)
 - PARKING AREA
 - ARMOUR STONE
 - WATER
 - REMOVALS

No.	Description	Drawn By	Date
D	REVISED FOR TENDER	H.Z.	DEC-12-2018
C	ISSUED FOR TENDER	M.G.	MAY-02-2018
B	ISSUED FOR REVIEW	M.G.	MAR-28-2018
A	ISSUED FOR REVIEW	M.G.	FEB-02-2018

Do not scale drawings. Verify all dimensions and conditions on site and immediately notify the Departmental Representative of all discrepancies.

- A Detail number / Numéro du détail
- B Location dwg. number / Numéro sur dessin



Project title / Titre du projet

HORSESHOE LAKE DAM REPLACEMENT

REMOVALS

Drawn by / Dessiné par: MAITE GARCIA
Designed by / Conçu par: KARINA SETO
Approved by / Approuvé par: JAVIER VILORIA
Drawing Date / Date du dessin: FEBRUARY 2018

Project manager / Administrateur de projet: NICHOLAS READ
HCEW Number / Numéro de CHTI: 30025849
Drawing Number / Numéro du Dessin: 105
Project Number / Numéro du projet: 121-15275-52
Sheet / Feuille: 1 of 1