

PERMIT OF PRACTICE  
 EXP SERVICES INC.  
 Signature: *S. S. Bell*  
 Date: NOVEMBER 26, 2018  
 PERMIT NUMBER: P483  
 NT/NJ Association of Professional Engineers and Geoscientists



0	ISSUED FOR TENDER	NOV 26 2018
revisions		date

project: G.O.C.B PUBLIC SAFETY CAMBRIDGE BAY, NUNAVUT FIRE ALARM REPLACEMENT

drawing: FIRE ALARM AND POWER MAIN FLOOR

designed: MG	concep:
date: NOVEMBER 26, 2018	
drawn: CAM	dessiné:
date: NOVEMBER 26, 2018	
approved: SRP	approuvé:
date: NOVEMBER 26, 2018	
Tender: _____	Sourçonn:
PWGSC Project Manager: _____	Administrateur de projets TPSGC:
project number: FRE-00248257-A1	no. du projet:
drawing no: E-1	no. du dessin:

**FIRE ALARM LEGEND**

- [F] MANUAL PULL STATION
- [H] HEAT DETECTOR
- [SD] SMOKE DETECTOR
- [SDU] SMOKE DETECTOR DUCT TYPE
- [H] HORN
- [S] STROBE
- [H/S] HORN/ STROBE
- [FAM] FIRE ALARM FAULT ISOLATION MODULE
- [EOLR] END-OF-LINE RESISTOR
- [FACP] FIRE ALARM CONTROL PANEL
- [FAA] FIRE ALARM ANNUNCIATOR PANEL

**POWER LEGEND**

- [MB] MAIN BREAKER IN ENCLOSURE
- [UM] UTILITY METER
- [ATS] AUTOMATIC TRANSFER SWITCH
- [SMPB] SURFACE MOUNTED PANELBOARD
- [DC] DIRECT CONNECTION TO EQUIPMENT

**COMMUNICATIONS LEGEND**

- [T] TELEPHONE OUTLET LOCATION
- 2 - INDICATES QUANTITY

**SUBSCRIPTS**

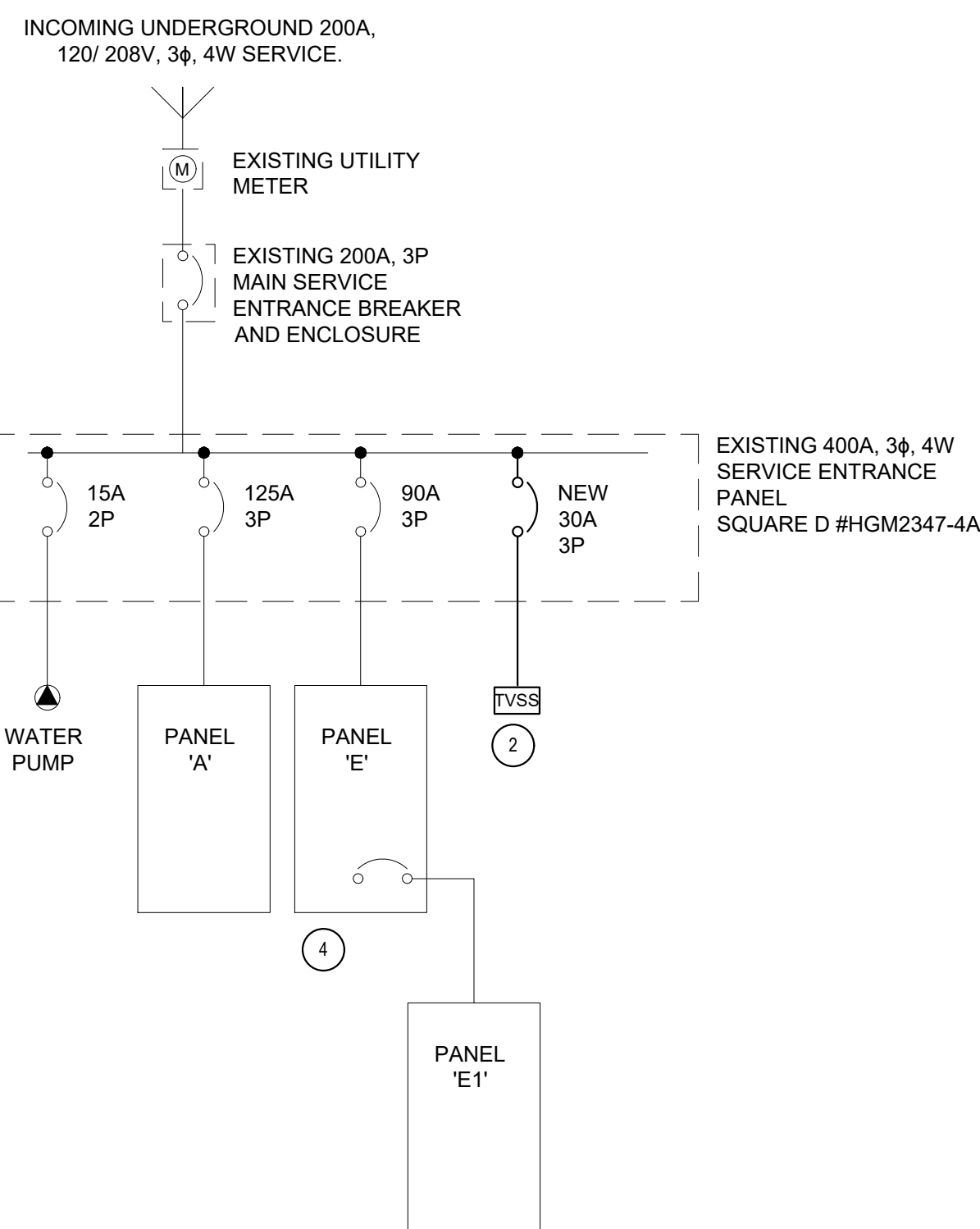
- SC = INDICATES SMOKE DETECTOR COMPLETE WITH SECURITY CAGE.
- WG = INDICATES DEVICE COMPLETE WITH WIRE GUARD.
- WP = INDICATES WEATHERPROOF DEVICE.

**ELECTRICAL KEYNOTES:**

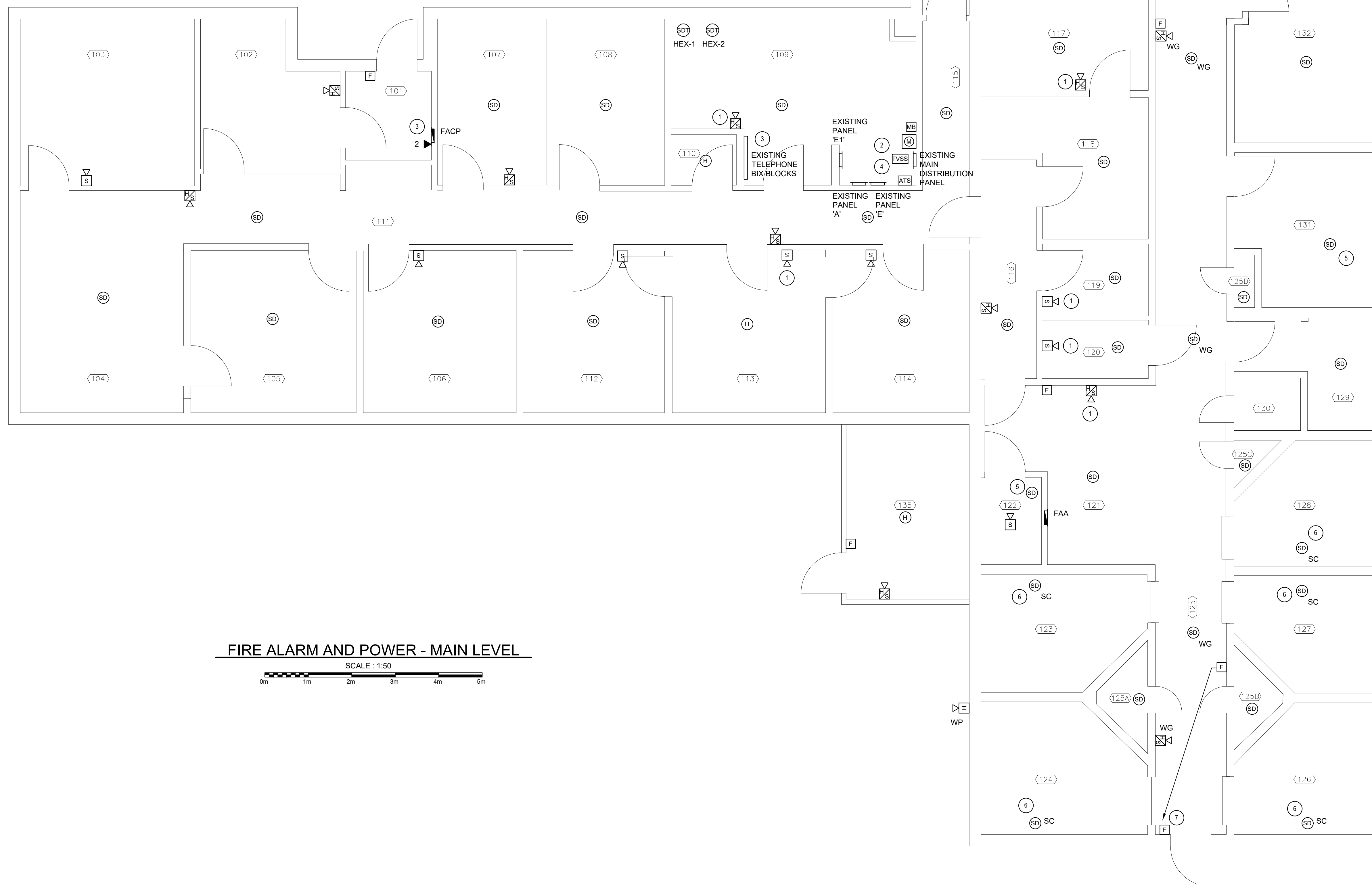
1. SUPPLY AND INSTALL NEW FIRE ALARM DEVICE AT LOCATION INDICATED. WIRE DEVICE INTO NEAREST NOTIFICATION CIRCUIT WITH SUFFICIENT SPARE CAPACITY.
2. SUPPLY AND INSTALL 200KA TVSS MODULE ADJACENT TO MAIN DISTRIBUTION PANEL. INSTALL MODULE ABOVE PANEL. DISTANCE BETWEEN MODULE AND PANEL TO BE KEPT TO A MINIMUM. REFER TO MANUFACTURER'S INSTALLATION INSTRUCTIONS.
3. SUPPLY AND INSTALL EMPTY 21mm CONDUIT COMPLETE WITH PULL CORD FROM TELEPHONE BIX BLOCKS IN ROOM 109 TO FIRE ALARM CONTROL PANEL. WIRING AND TERMINATIONS BY OTHERS.
4. CONTRACTOR TO REMOVE FACP FROM EXISTING 15A/ 1P BREAKER IN PANEL 'E' AND WIRE TO NEW 15A/ 1P BREAKER IN PANEL 'A'. NEW BREAKER SHALL BE RED COMPLETE WITH LOCKING TAB. EXTEND WIRING AND CONDUIT AS REQUIRED. MARK EXISTING BREAKER AS SPARE.
5. SUPPLY AND INSTALL NEW FIRE ALARM DEVICE AT LOCATION INDICATED. WIRE DEVICE INTO EXISTING INITIATING CIRCUIT.
6. INSTALL SECURITY CAGE PER MANUFACTURER'S INSTRUCTIONS COMPLETE WITH ANTI-PICK GROUT AS APPROVED BY DEPARTMENTAL REPRESENTATIVE.
7. EXISTING MANUAL PULL STATION LOCATION TO BE RELOCATED TO LATCH SIDE OF EXTERIOR DOOR. PROVIDE ADDITIONAL WIRING AND CONDUIT. EXTEND FIRE ALARM CIRCUIT.

**GENERAL NOTE:**

1. ALL DEVICES SHOWN ON PLANS ARE EXISTING UNLESS INDICATED OTHERWISE. EXISTING DEVICES TO BE REPLACED WITH NEW INCLUDING BUT NOT LIMITED TO SMOKE DETECTORS, HEAT DETECTORS, HORN/ STROBES, ETC. EXISTING WIRING TO BE RE-USED.



**POWER DISTRIBUTION SINGLE LINE DIAGRAM**



**FIRE ALARM AND POWER - MAIN LEVEL**

