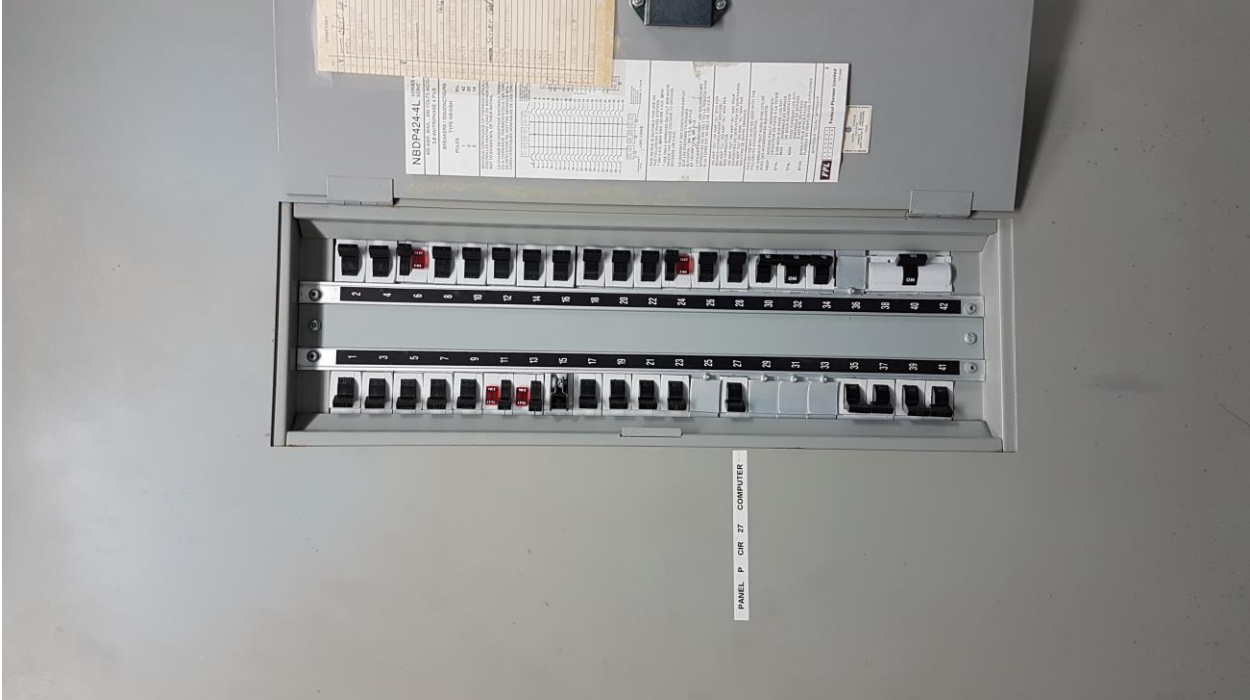


# General Aviation Services Building



General Aviation Services Building



General Aviation Services Building



General Aviation Services Building



General Aviation Services Building



General Aviation Services Building



General Aviation Services Building



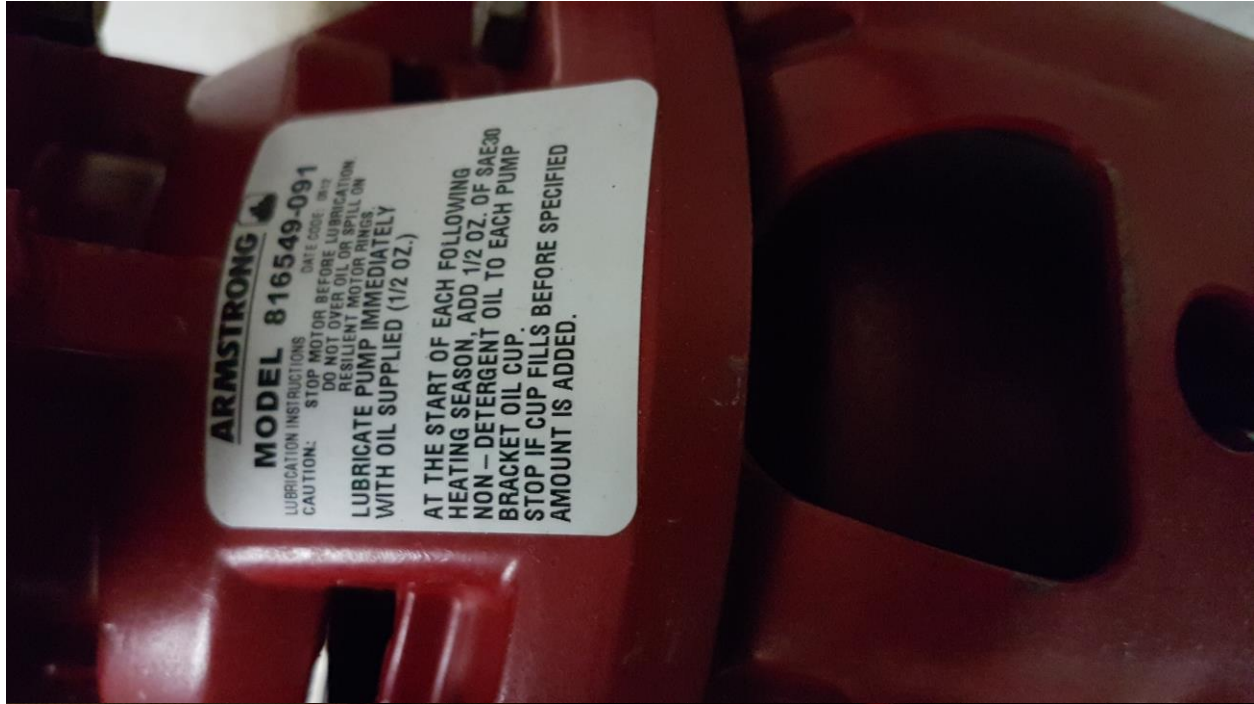
General Aviation Services Building





General Aviation Services Building









No.	DIRECTORY	DIRECTOIRE
1	PANEL P	
2	<del>8</del> <i>Obs. 1st</i>	
3	CORRIDOR LIGHTS	
4	REC. CORRIDOR	
5	REC./STRET. ROOM	
6	REC. W/C	
7	W/O	
8	REC. STORAGE	
9	STORAGE	
10	REC. STORAGE & TELEPHONE	
11	RESTROOM LIGHTS	
12	REC. STORAGE ROOM	
13	RESTROOM LIGHTS	
14	REC. STORAGE ROOM	
15	WAT. BOXES	
16	STAIR	
17	REC. ON ROOF	<i>Ceiling</i>
18	PAINTING ROOM	
19	EX-10 MECHANICAL ROOM	
20	CIRC. EQUIPMENT ROOM	
21	EX-11 MECHANICAL ROOM	
22	ELL. ROOM	
23	NON-HEATED DAMPERS MECH. ROOM	
24	STAIR	
25	<del>EX-2</del> <i>Service Control Room</i>	
26	EX-2 WASHROOM	
27	STAGE	
28	EX-7 <del>Service Control Room</del>	
29	STAGE	
30	STAGE	
31	STAGE	
32	STAGE	
33	STAGE	
34	HALL	
35	HALL	
36	HALL	
37	MECHANICAL ROOM	
38	STAGE	
39	STAGE	
40	FEEDER PANEL P	
41	FEEDER PANEL P	
42	CORRIDOR	

NO.	TYPE	LINE / LIGNE
1	2	
2	4	
3	14	
4	2	
5	4	
6	14	
7	2	
8	4	
9	14	
10	2	
11	4	
12	14	
13	2	
14	4	
15	14	
16	2	
17	4	
18	14	
19	2	
20	4	
21	14	
22	2	
23	4	
24	14	
25	2	
26	4	
27	14	
28	2	
29	4	
30	14	
31	2	
32	4	
33	14	
34	2	
35	4	
36	14	
37	2	
38	4	
39	14	
40	2	
41	4	
42	14	

**DP424-4L** SERIES / SERIE  
 AMP. MAX. 240 VOLTS AC/CA  
 3 Ø 4W/TRIPHASE 4 FILS

BREAKERS / DISJONCTEURS

CONTINUOUS OR THERMOSTATICALLY CONTROLLED HEATING LOAD ON BRANCH CIRCUIT SHALL NOT EXCEED 80% OF THEIR RATING.  
 CONTINUÛS OU THERMOSTATIQUEMENT CONTRÔLÉ CHAUFFAGE MAXIMALE PERMANENT SUR LES BRANCHEMENTS NE DOIT PAS DÉPASSER 80% DE LEURS CAPACITÉS NOMINALES DE CES CIRCUITS

THIS DEVICE IS SUITABLE FOR USE ON 240 VOLT AC SYSTEMS  
 CE DISPOSITIF EST CONVENU POUR EMPLOI SUR LES SYSTÈMES À 240 V.C.A.

USE ONLY APPROVED 240 VOLT BREAKERS  
 N'UTILISER QUE DES DISJONCTEURS APPROUVÉS À 240 V.C.A.

HERE THE PHASE VOLTAGE TO GROUND EXCEEDS 120 V.A.C.  
 ICI LE TENSION ENTRE PHASE ET TERRE DÉPASSE 120 V.C.A.

3-1111RS