



**RETURN BIDS TO:  
RETOURNER LES SOUMISSIONS A :**

**In Person:  
en personne:**

**RCMP "E" DIV BID RECEIVING FRONT DESK**  
14200 Green Timbers Way  
Surrey BC V3T 6P3  
**Attn: Solicitation# M2989-8-0217**

**By Mail:  
par courrier:**

**RCMP "E" DIV Bid RECEIVING FRONT DESK**  
**Mailstop # 1004**  
14200 Green Timbers Way  
Surrey BC V3T 6P3  
**Attn: Solicitation# M2989-8-0217**

**REQUEST FOR AMD 001  
PROPOSAL**

**DEMANDE DE AMD 001  
PROPOSITION**

Proposal to: Royal Canadian Mounted Police

We hereby offer to sell to Her Majesty the Queen in right of Canada, in accordance with the terms and conditions set out herein, referred to herein or attached hereto, the goods, services, and construction listed herein and on any attached sheets at the price(s) set out therefor.

Proposition aux : Gendarmerie royale du Canada

Nous offrons par la présente de vendre à Sa Majesté la Reine du chef du Canada, aux conditions énoncées ou incluses par référence dans la présente et aux appendices ci-jointes, les biens, services et construction énumérés ici sur toute feuille ci-annexée, au(x) prix indiqué(s).

Comments: - Commentaries :

THIS DOCUMENT CONTAINS A SECURITY REQUIREMENT AND **MANDATORY SITE VISIT**

LE PRÉSENT DOCUMENT COMPORTE EXIGENCE EN MATIÈRE DE SÉCURITÉ ET **VISITE OBLIGATOIRE DES LIEUX**

<b>Title – Sujet</b> Forensic Lab Moving Services		<b>Date</b> 2019-01-07
<b>Solicitation No. – N° de l'invitation</b>  M2989-8-0217		
<b>Client Reference No. - No. De Référence du Client</b>		
<b>Solicitation Closes – L'invitation prend fin</b>		
<b>At / à :</b>	<b>2 : 00 pm</b>	PST (Pacific Standard Time) HNP (heure normale de Pacifique)
<b>On / le :</b>	<b>January 28, 2019 / Janvier 28, 2019</b>	
<b>Delivery - Livraison</b> See herein — Voir aux présentes	<b>Taxes - Taxes</b> See herein — Voir aux présentes	<b>Duty – Droits</b> See herein — Voir aux présentes
<b>Destination of Goods and Services – Destinations des biens et services</b> See herein — Voir aux présentes		
<b>Instructions</b> See herein — Voir aux présentes		
<b>Address Inquiries to – Adresser toute demande de renseignements à</b>		
<b>Telephone No. – No. de téléphone</b> 778-290-2777	<b>Email - courrier électronique</b> <a href="mailto:Amy.lee@rcmp-grc.gc.ca">Amy.lee@rcmp-grc.gc.ca</a>	
<b>Delivery Required – Livraison exigée</b> See herein — Voir aux présentes	<b>Delivery Offered – Livraison proposée</b>	
<b>Vendor/Firm Name, Address and Representative – Raison sociale, adresse et représentant du fournisseur/de l'entrepreneur:</b>		
<b>Telephone No. – No. de téléphone</b>	<b>Email / courrier électronique</b>	
<b>Name and title of person authorized to sign on behalf of Vendor/Firm (type or print) – Nom et titre de la personne autorisée à signer au nom du fournisseur/de l'entrepreneur (taper ou écrire en caractères d'imprimerie)</b>		
<b>Signature</b>	<b>Date</b>	



The Solicitation Amendment 001 is raised to answer bidders' questions and add the Appendix "B", "C", and make the following changes:

Page 9, 4.1.2 Financial Evaluation

**Delete:** Total bid price is defined as Annex "B" Basis of Payment:  $(A) + (B) \times 50 = \text{total bid price}$

**Insert:** Total bid price is defined as Annex "B" Basis of Payment:  $(A) + (B) \times 50 \text{ hours} = \text{total bid price}$

Annex "B" – Basis of Payment

**Delete:** B2.3 Movers, B2.4 Packers, B2.5 Drivers

**Insert:** B2.3 Mover, B2.4 Packer, B2.5 Driver

### Questions (Q) and Answers (A) – Q/A

Q1: What is the Security clearance level for this requirement, do you need enhanced liability clearance?

A1: The Security Level required is Facility Access-02. Enhanced Reliability is not required.

Q2: The insurance company request a total value of shipment, can you provide a rough number?

A2: Canadian Dollar \$500,000.00

Q3: What is the regular office hour during the Move:

A3: Monday to Friday 0800 hours to 1600 hours

Q4: What is the plan for the leftover furniture not to be moved to new location?

A4: They will not be handled under this tender requirement. Government has Disposal of Surplus Moveable Crown Assets policy to follow.

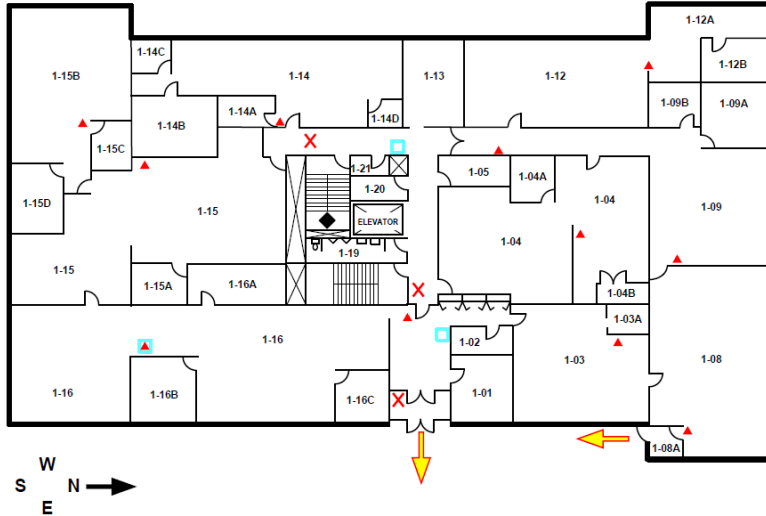
Q5: How many meetings might be required for the Move Planning?

A5: approximately 5 meetings



**Appendix B – Existing Lab floor plan**

Fire Safety Plan: NFLS-V.004  
March 2018



**FORENSIC BUILDING – FIRST FLOOR**  
5201 Heather Street, Vancouver BC  
Emergency Evacuation Route

- ✗ ALARM PULL
- ▲ FIRE EXTINGUISHER
- HOSE CABINET
- GAS CYLINDER(S)
- ➡ EMERGENCY EXIT ROUTE
- ◆ STAND PIPE
- YOU ARE HERE

When you become aware of fire or smoke:

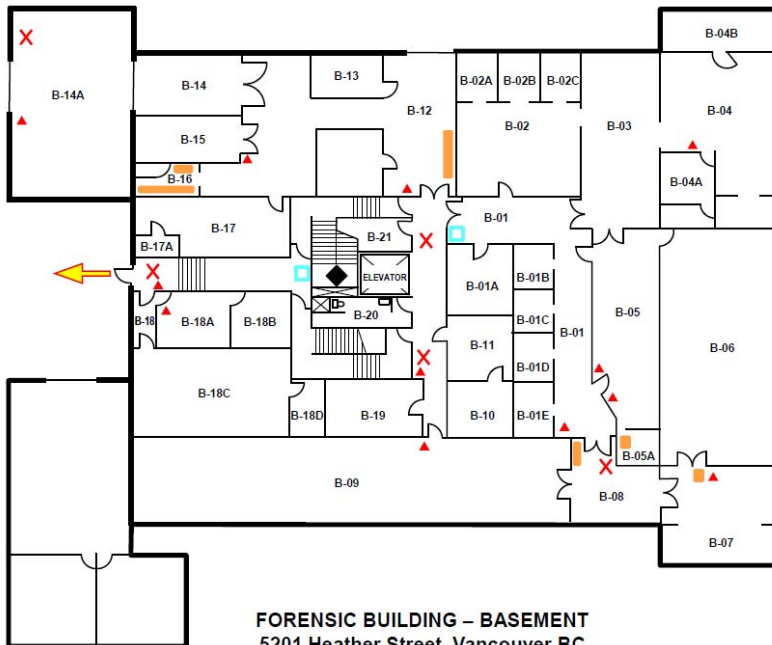
1. WARN persons nearby
2. PULL the nearest manual fire alarm
3. LEAVE the building using the nearest, safe exit
4. PHONE the Fire Department from the nearest safe location
5. NOTIFY the Chief or Deputy Chief Fire Emergency Warden if fire occurs during core business hours
6. DO NOT re-enter the building unless the General Manager gives permission



Manual fire alarm

Exit sign

Fire Safety Plan: NFLS-V.004  
March 2018



**FORENSIC BUILDING – BASEMENT**  
5201 Heather Street, Vancouver BC  
Emergency Evacuation Route

- ✗ ALARM PULL
- ▲ FIRE EXTINGUISHER
- HOSE CABINET
- GAS CYLINDER(S)
- ➡ EMERGENCY EXIT ROUTE
- ◆ STAND PIPE
- YOU ARE HERE

When you become aware of fire or smoke:

1. WARN persons nearby
2. PULL the nearest manual fire alarm
3. LEAVE the building using the nearest, safe exit
4. PHONE the Fire Department from the nearest safe location
5. NOTIFY the Chief or Deputy Chief Fire Emergency Warden if fire occurs during core business hours
6. DO NOT re-enter the building unless the General Manager gives permission

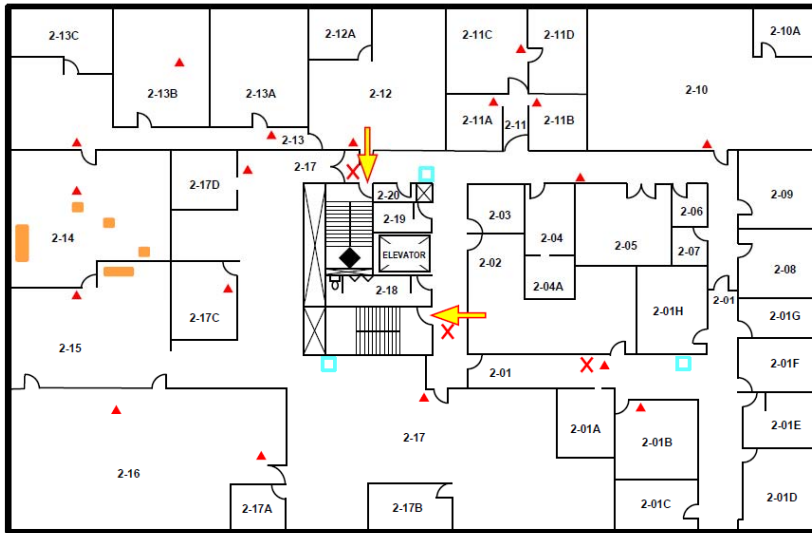


Manual fire alarm

Exit sign



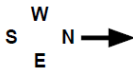
Fire Safety Plan: NFLS-V.004  
March 2018



- ✗ ALARM PULL
- ▲ FIRE EXTINGUISHER
- HOSE CABINET
- GAS CYLINDER(S)
- EMERGENCY EXIT ROUTE
- ◆ STAND PIPE
- YOU ARE HERE

**When you become aware of fire or smoke:**

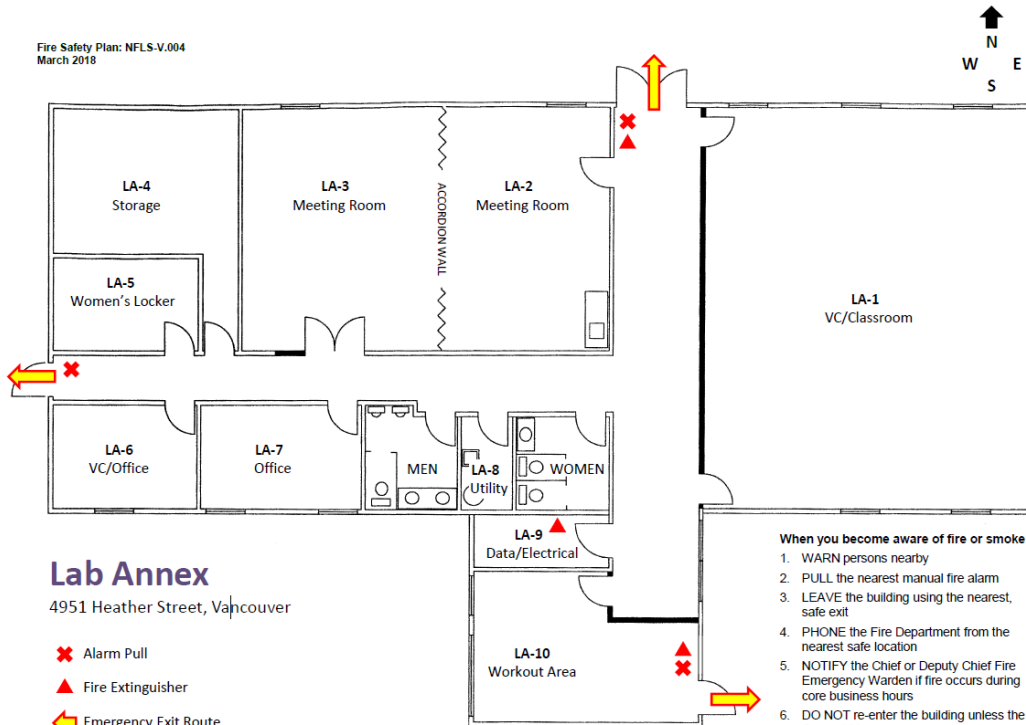
1. WARN persons nearby
2. PULL the nearest manual fire alarm
3. LEAVE the building using the nearest, safe exit
4. PHONE the Fire Department from the nearest safe location
5. NOTIFY the Chief or Deputy Chief Fire Emergency Warden if fire occurs during core business hours
6. DO NOT re-enter the building unless the General Manager gives permission



**FORENSIC BUILDING – SECOND FLOOR**  
5201 Heather Street, Vancouver BC  
Emergency Evacuation Route



Fire Safety Plan: NFLS-V.004  
March 2018



**Lab Annex**

4951 Heather Street, Vancouver

- ✗ Alarm Pull
- ▲ Fire Extinguisher
- Emergency Exit Route

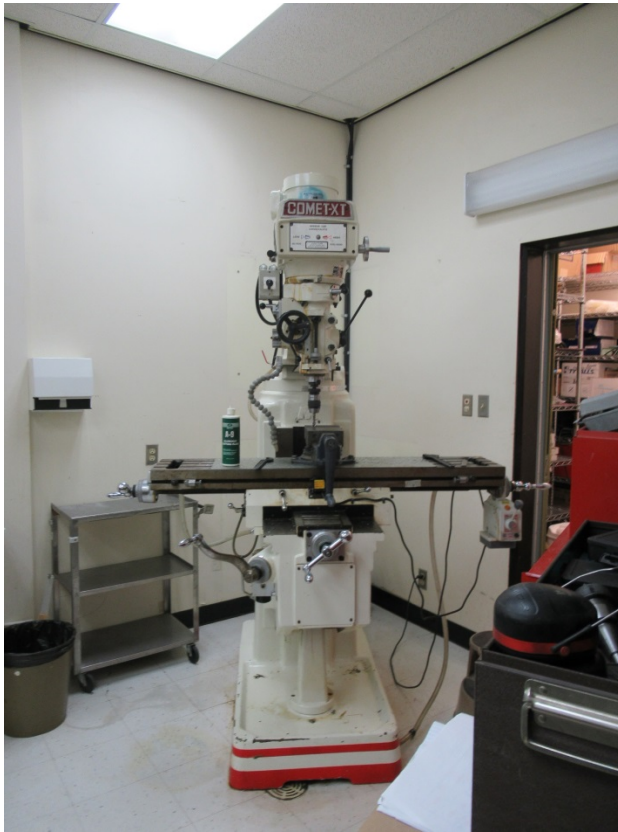
**When you become aware of fire or smoke:**

1. WARN persons nearby
2. PULL the nearest manual fire alarm
3. LEAVE the building using the nearest, safe exit
4. PHONE the Fire Department from the nearest safe location
5. NOTIFY the Chief or Deputy Chief Fire Emergency Warden if fire occurs during core business hours
6. DO NOT re-enter the building unless the General Manager gives permission





**Appendix C – sample photos**



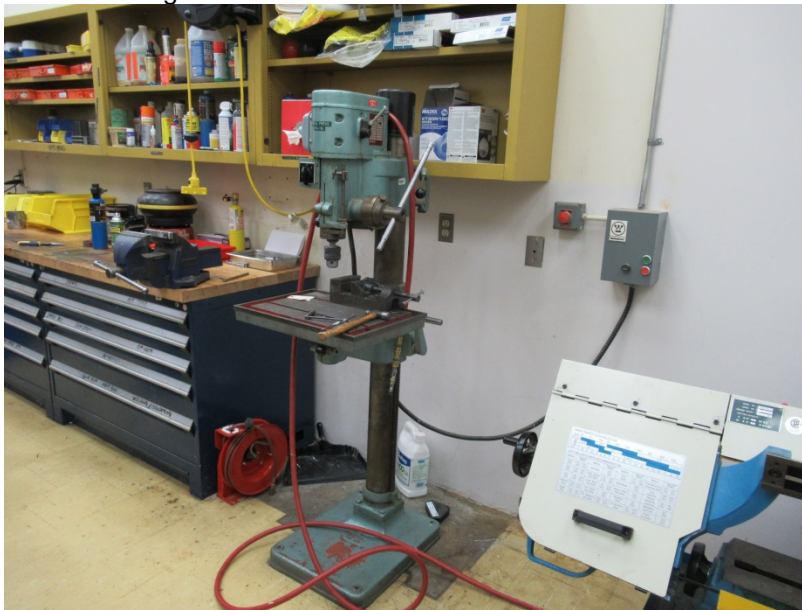
Milling machine ~ 1200 Kg



Horizontal Band Saw ~ 350 Kg



Lath ~ 650 Kg



Drill Press



Elevator at 5201 Heather St



Tecan hood and robot

**ALL OTHER TERMS AND CONDITIONS REMAIN UNCHANGED**