

Lightstation Remediation Sites and Site Access

Parks Canada Buildings and Structures at Georgina Point Lightstation, East Point Lightstation; Portlock Point Lightstation and Russell Island

Developed for Contract Bidders Meeting in Jan 2019

Morgan Davies, Dec 2018





Lead Remediation - East Point Lightstation

- Road
- Select Infrastructure
- Park Property Boundary

Site Access Notes: East Point, Saturna Island

- Road access only
- Open lawn areas and/or driveway potentially available for staging
- Part-time resident in bunkhouse (Park Warden)



East Point from the air. Structures at top left of image

East Point, Saturna Island Light tower and shed



East Point, Saturna Island Bunkhouse





Lead Remediation - Georgina Point Light Station

- Road
- Select Infrastructure
- Park Property Boundary

Site Access Notes: Georgina Point, Mayne Island

- Road access
- Potential staging areas on driveway and/or lawn
- Accessing site by water not recommended: strong currents, frequent ferry wake, rough beach



Georgina Point from the air.

Georgina Point, Mayne Island Lightkeepers House



Georgina Point, Mayne Island Weather Station



Georgina Point, Mayne Island Beacon

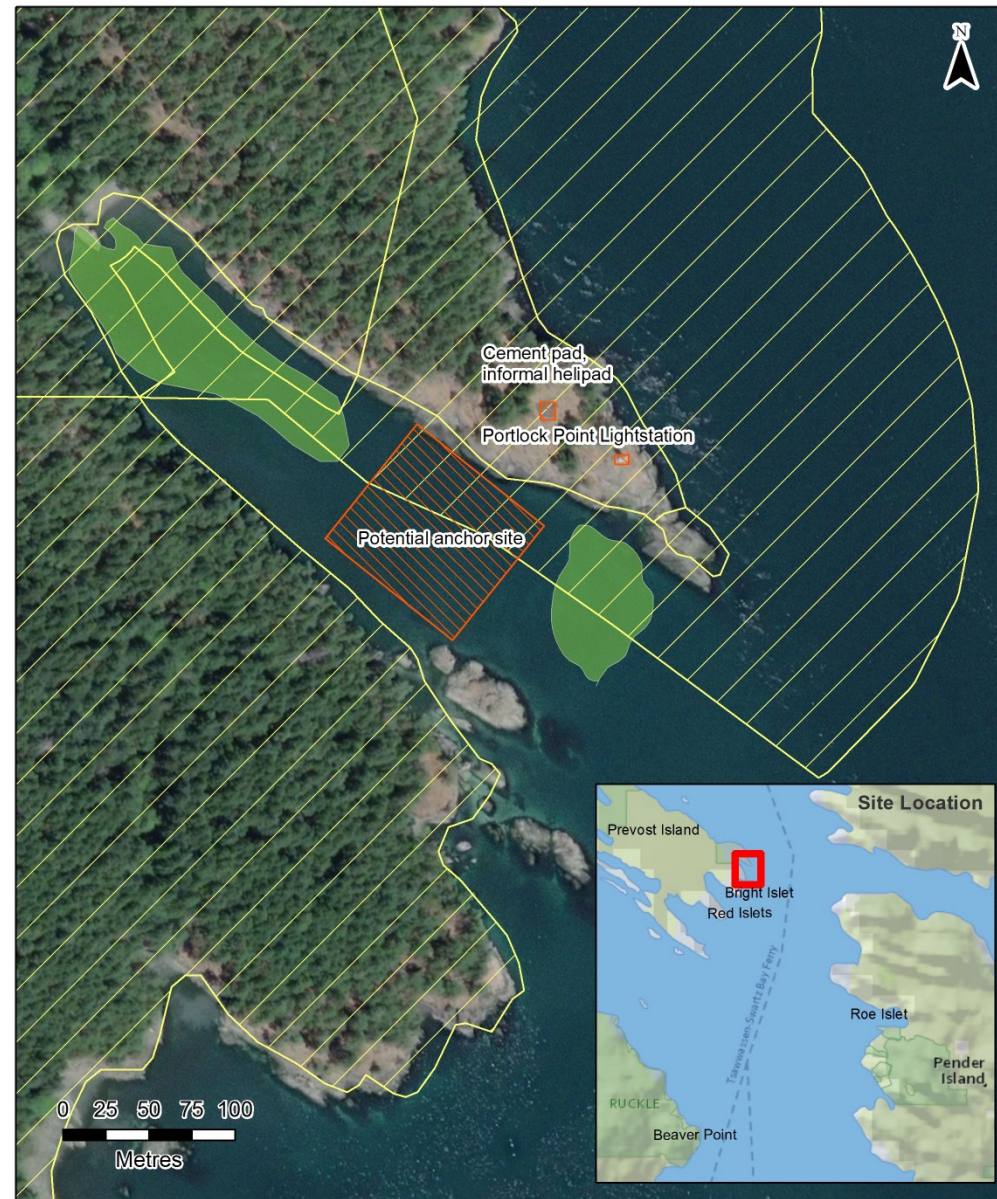


Georgina Point, Mayne Island Garage



Georgina Point, Mayne Island Shed





Lead Remediation - Portlock Point Lightstation

- Select Infrastructure
- Eelgrass Extent (2011)
- Park Property Boundary



**Gulf Islands
National Park Reserve**

UTM zone 10 NAD 1983 2019/01/08

Site Access Notes: Portlock Point, Prevost Island

- Boat access only – no ferry
- Steep rocky cliffs surrounding lightstation
- Easier shore access to the Northwest of lighthouse, from inside cove
- Rough deer trail between traditional shore access and lightstation
- Shore access point is shallow sloped bedrock/boulders
- Cement pad within meters of lightstation provides potential staging area
- Eelgrass beds and shallow depths within cove may restrict anchoring and/or spudding
- Victoria-Vancouver ferry passes by the site – wake could be a concern
- Wooden walkway from cement pad to entry door of lightstation



Portlock Point lightstation from the air looking Northeast. Potential shore access point is out of frame ~200m to the left/Northwest.

Portlock Point, Prevost Island Lighthouse



Portlock Point, Prevost Island Lighthouse Area



Looking Northwest along wooden walkway
toward cement pad and potential staging
area



Portlock Point, Prevost Island Potential Shore Access



Looking Southeast out of Portlock Cove – less steep shore access. Bedrock/boulder beach.

Looking South out of Portlock Cove and downslope across rough deer trail. Potential shore access point in bottom right of images.





Lead Remediation - Mahoi House

- Trail
- Select Infrastructure
- Park Property Boundary
- Digitized Eelgrass (2004)

Site Access Notes: Russel Island

- Boat access only – no ferry
- Fairly sheltered harbour very close to Fulford Harbour Saltspring
- Permanent dock within ~200 meters of sites
- No vehicles on island. Dock and sites connected by ~1.5 meter wide dirt and boardwalk path
- Potential direct shoreline access to site within ~20 meters on gently sloping bedrock or sandy pocket beach
- Open lawn areas potentially available for staging

<https://gulflandsnationalpark.com/russell-island-interactive-photo-map/>



Russel Island, Mahoi House



Russel Island, Caretaker's Shed



Russel Island, Water Tower



Lawn/garden area between structures at the site, images taken from roughly the same point looking Southwest and Northeast.



Potential shore access
point in front of Mahoi
House viewed from the
water and looking out
from shore



Questions?

