



**Public Services and
Procurement Canada**

**Services publics et
Approvisionnement Canada**

**KM 311 - 330
CULVERT REPLACEMENT
ALASKA HIGHWAY, BC**

**ALASKA HIGHWAY
BRITISH COLUMBIA**

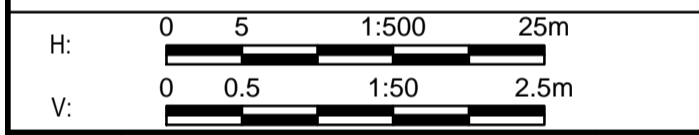
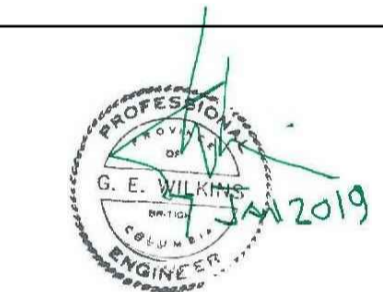
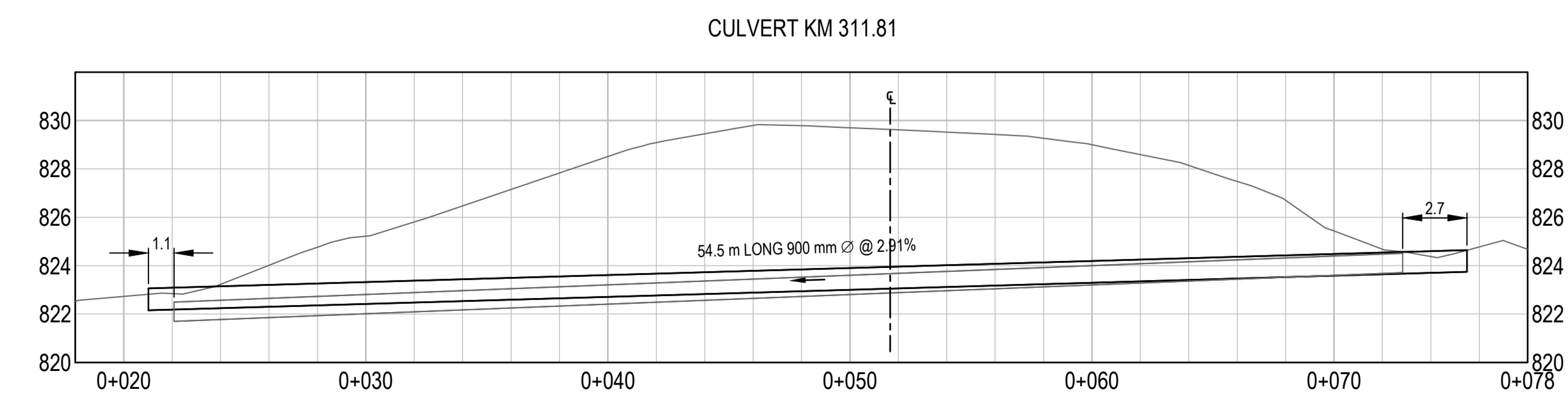
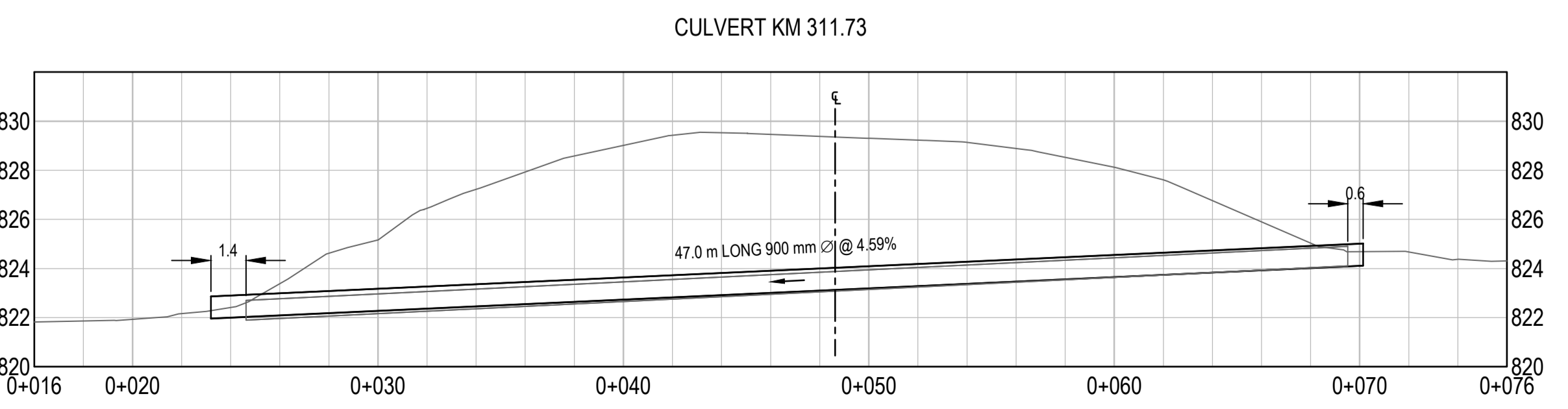
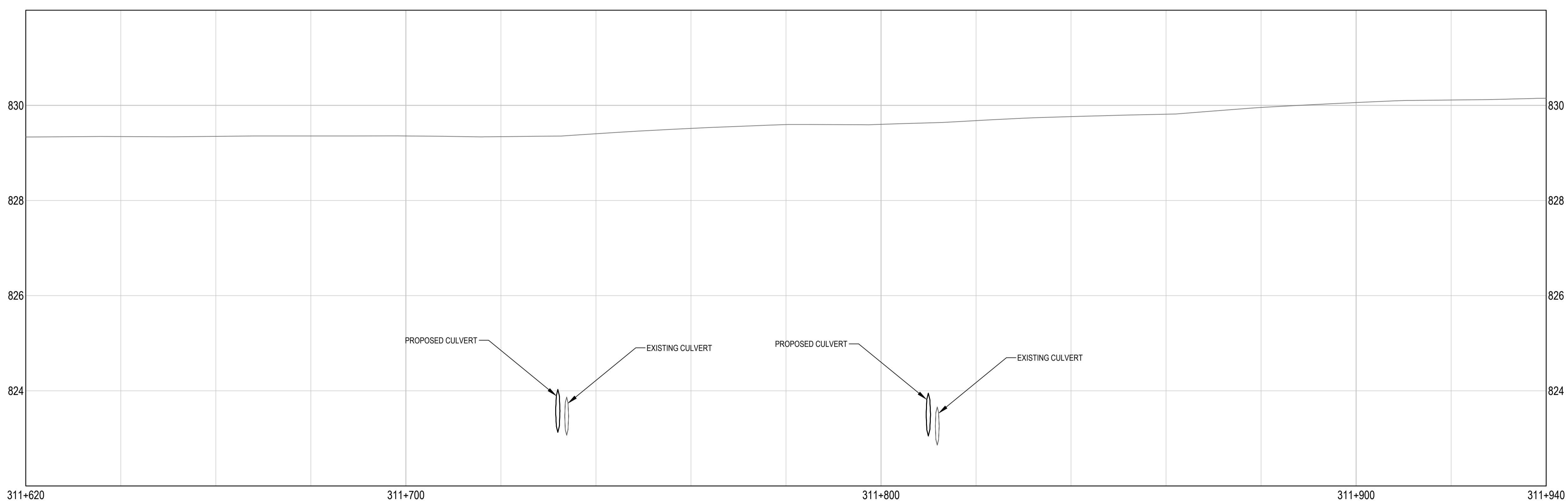
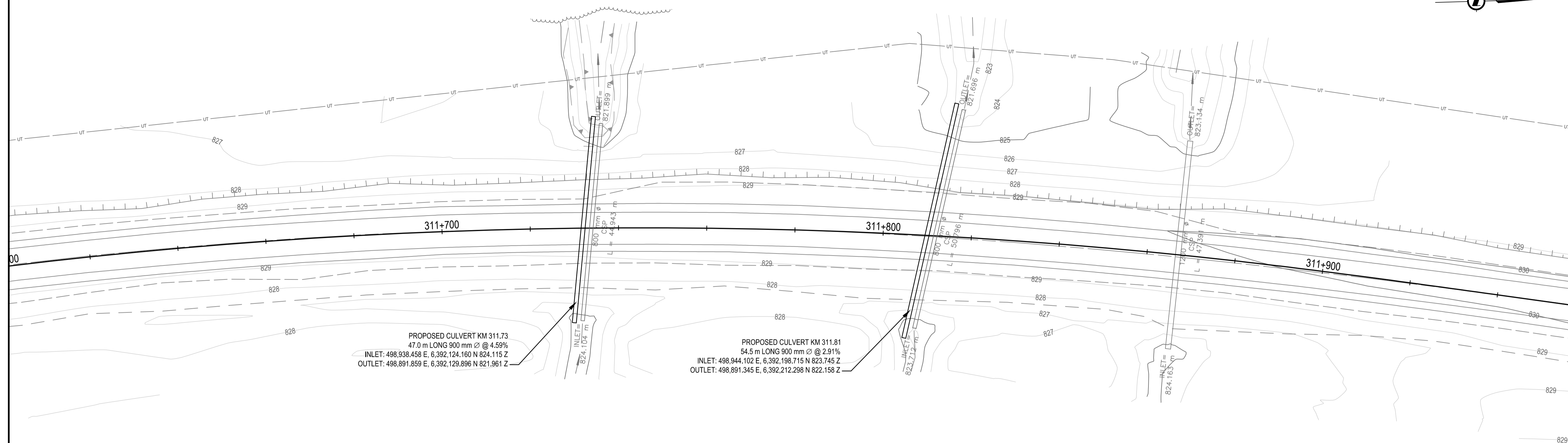


PROJECT No. R.017173.330

**ISSUED FOR TENDER
JANUARY 7, 2019**

ISSUED FOR TENDER

- GENERAL NOTES:
1. DIMENSIONS, COORDINATES, ELEVATIONS ARE IN METRES UNLESS NOTED OTHERWISE
2. THE CONTRACTOR IS RESPONSIBLE FOR VERIFYING THE LOCATION OF ALL UTILITIES PRIOR TO CONSTRUCTION



Revision/Revisão	Description/Description	Date/Date
0	ISSUED FOR TENDER	19/01/07

Client/client
Public Services and Procurement Canada



Project title/Titre du projet
**KM 311 - 330
CULVERT REPLACEMENT
ALASKA HIGHWAY, BC**

Approved by/Approve par
G.WILKINS

Designed by/Concept par
A.HORWOOD

Drawn by/Dessine par
A.DEEPWELL

PSPC Project Manager/Administrateur de Projets SPAC
A.TAHERI

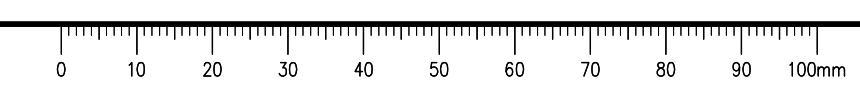
PSPC, Architectural and Engineering Resources Manager/
Ressources Architectural et de Directeur d'Ingénierie, SPAC

Client/client
Public Services and Procurement Canada

Drawing title/Titre du dessin
**PLAN / PROFILE / SECTION
CULVERT KM 311.73 &
CULVERT KM 311.81**

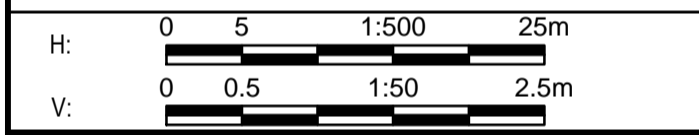
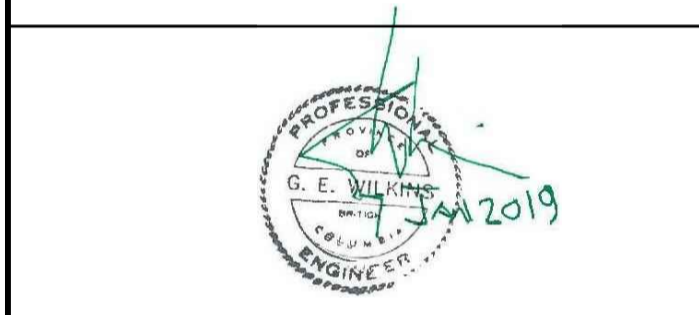
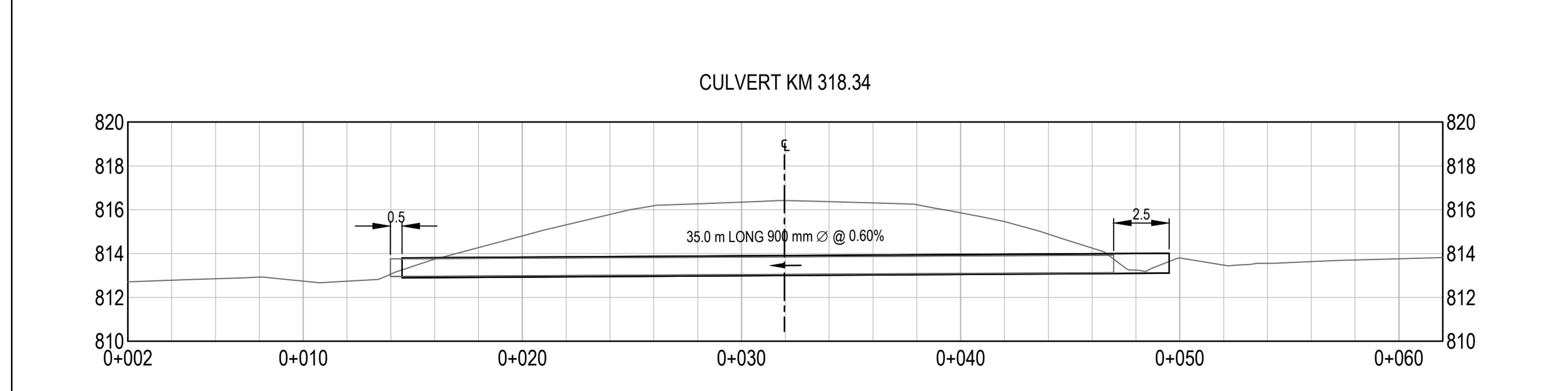
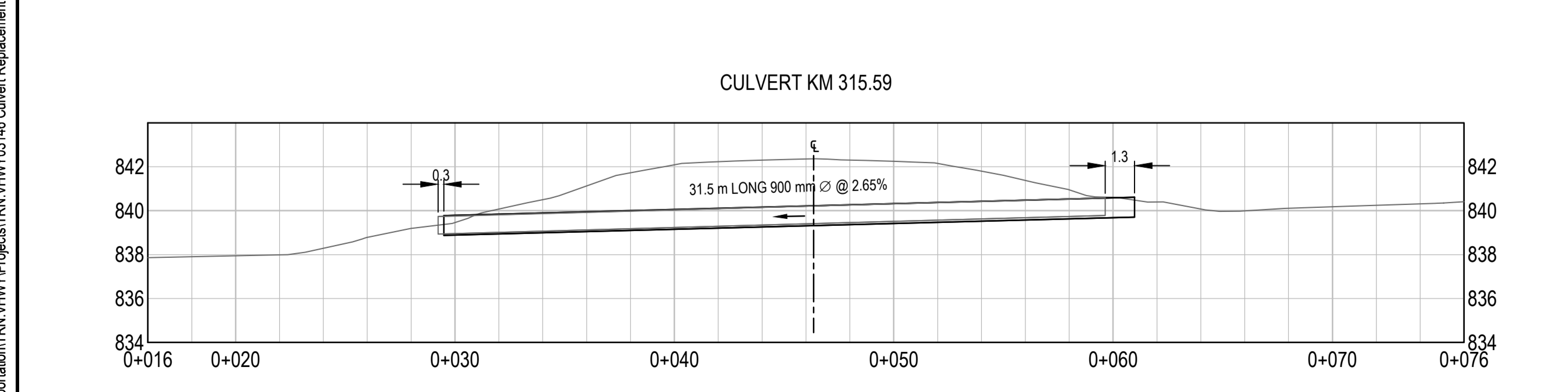
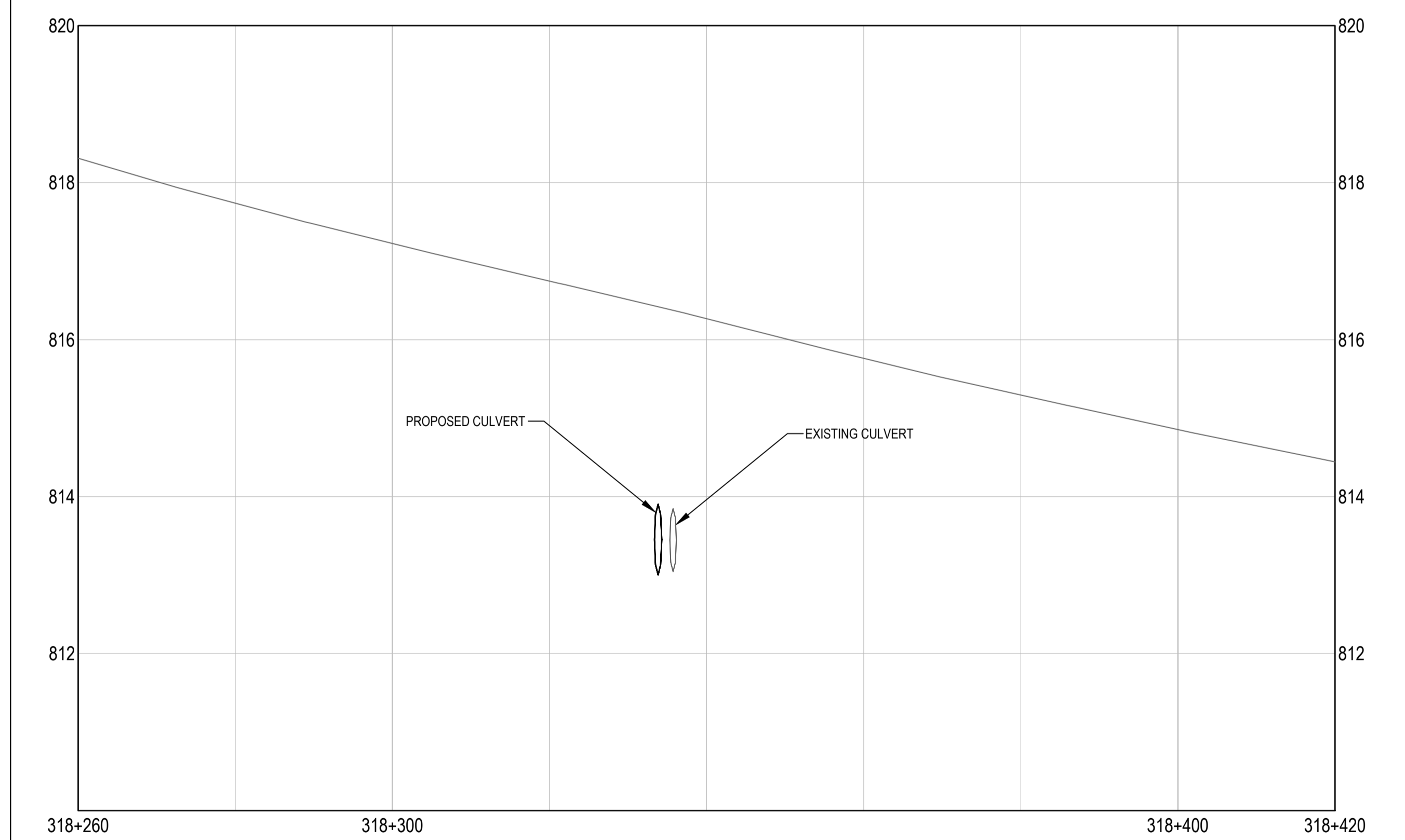
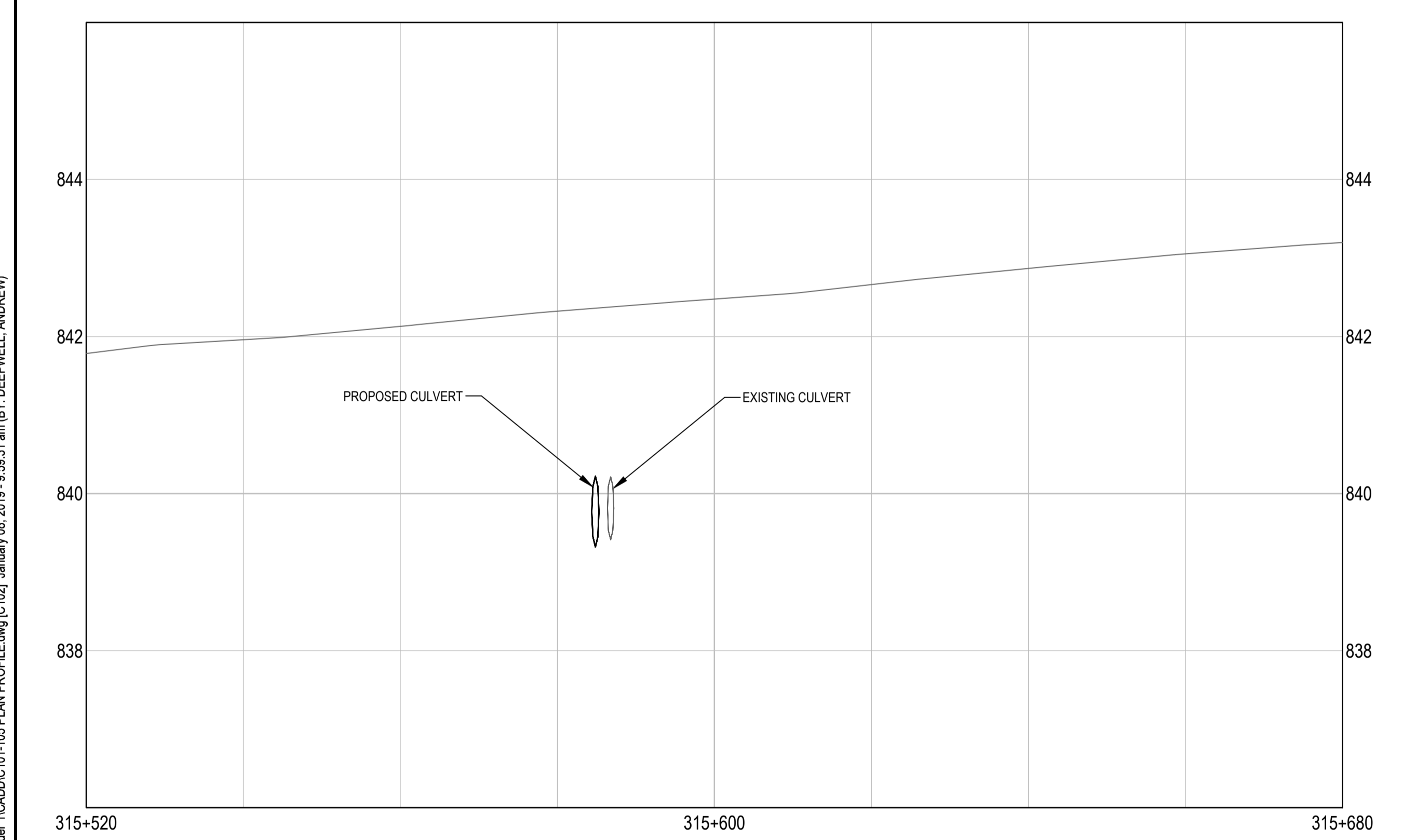
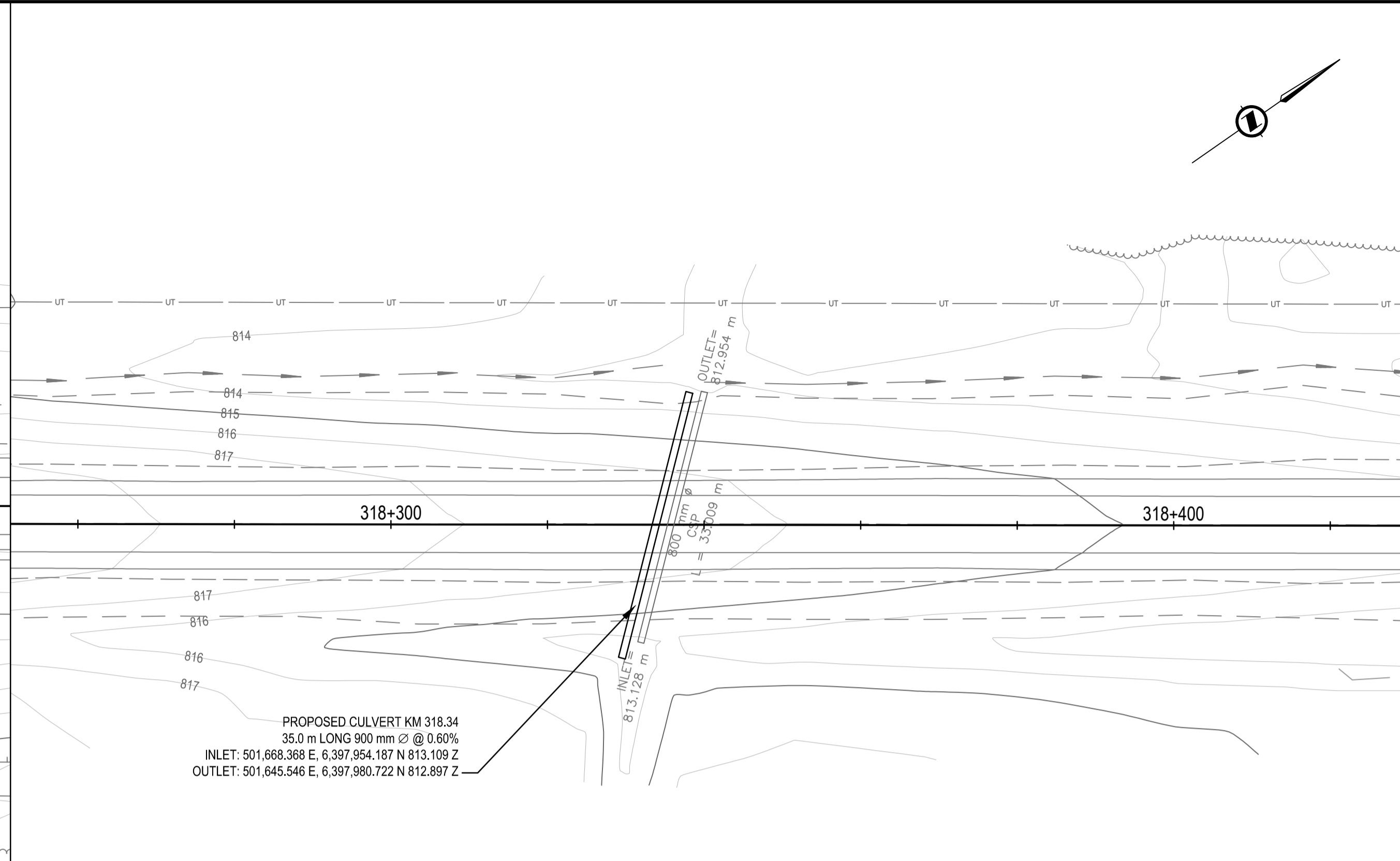
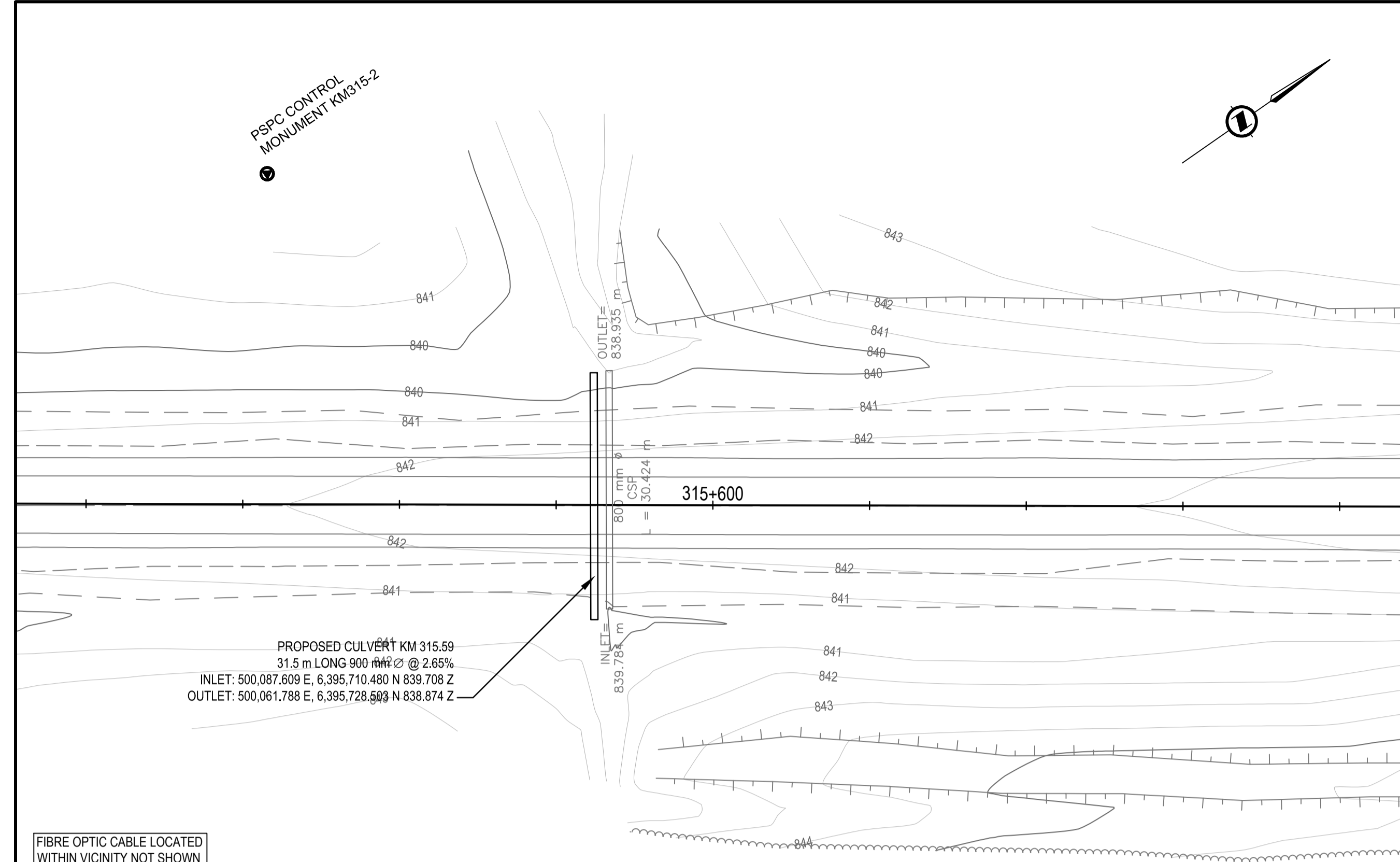
Project No./No. du projet	Sheet/Fauille	Revision no./La Révision no.
R.017173.330	C101 OF C105	0

Q:\VancouverTransportation\TRN\VHWY\Projects\TRN\VHWY\03146 Culvert Replacement\Tender\1\CADD\C101-105 PLAN PROFILE.dwg [C101] January 08, 2019 - 9:57:34 am (BY:DEEPWELL, ANDREW)



ISSUED FOR TENDER

GENERAL NOTES:
 1. DIMENSIONS, COORDINATES, ELEVATIONS ARE IN METRES UNLESS NOTED OTHERWISE
 2. THE CONTRACTOR IS RESPONSIBLE FOR VERIFYING THE LOCATION OF ALL UTILITIES PRIOR TO CONSTRUCTION



Revision/	Description/Description	Date/Date
0	ISSUED FOR TENDER	19/01/07

Client/client
Public Services and Procurement Canada



Project title/Titre du projet
**KM 311 - 330
 CULVERT REPLACEMENT
 ALASKA HIGHWAY, BC**

Approved by/Approve par
G.WILKINS
 Designed by/Concept par
A.HORWOOD
 Drawn by/Dessine par
A.DEEPWELL
 PSPC Project Manager/Administrateur de Projets SPAC
A.TAHERI
 PSPC, Architectural and Engineering Resources Manager/
 Ressources Architectural et de Directeur d'Ingénierie, SPAC

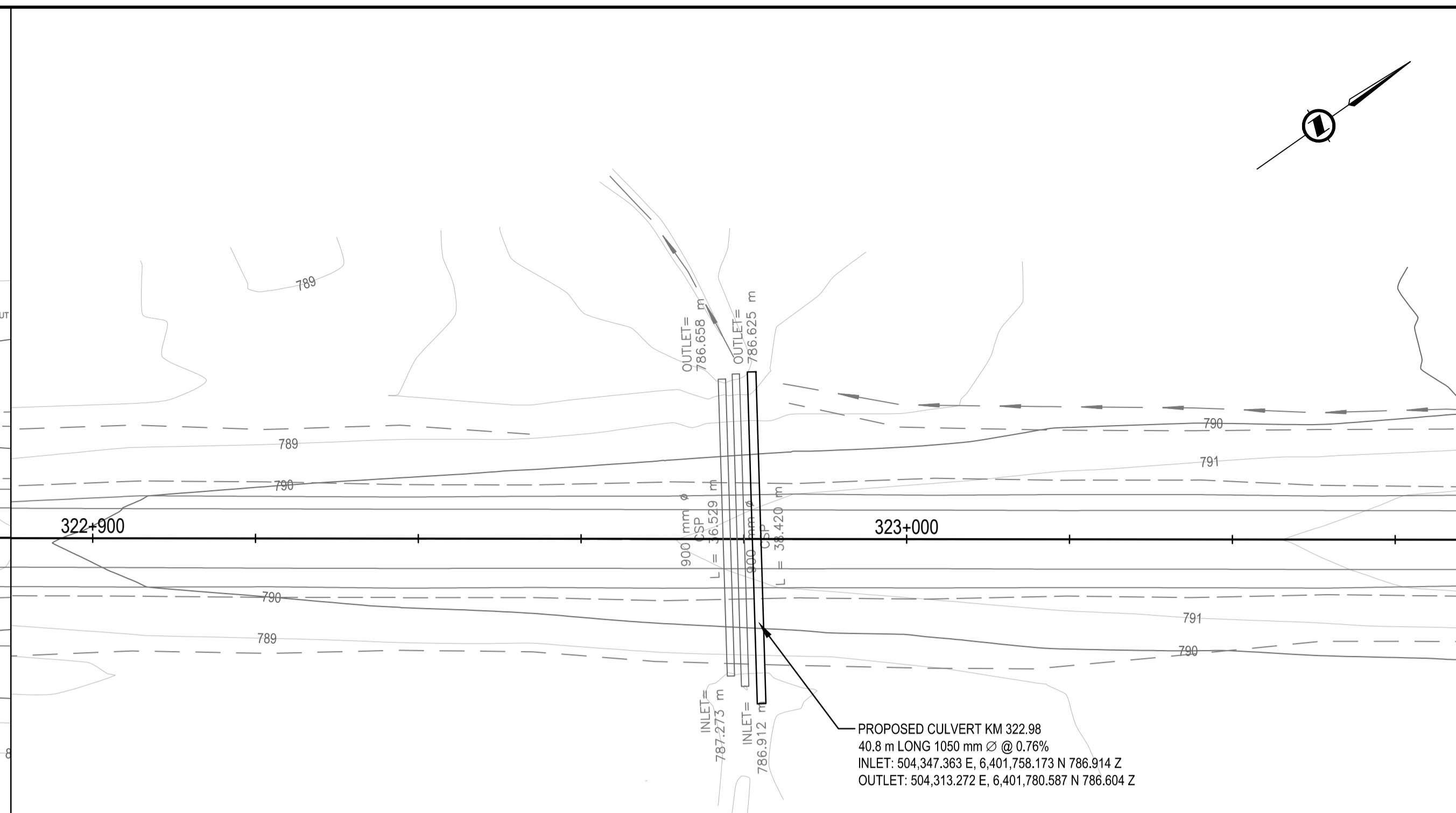
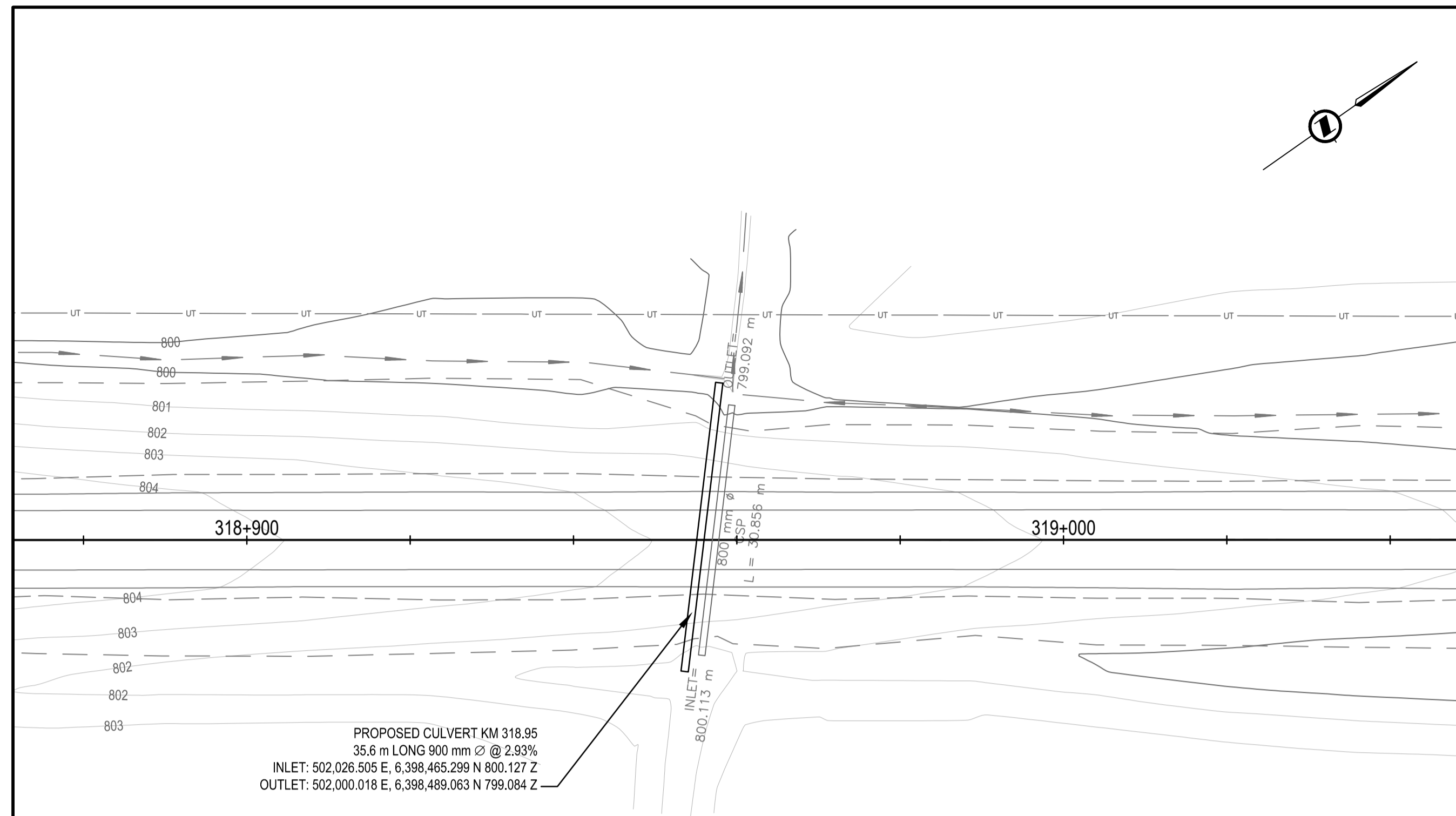
Client/client
Public Services and Procurement Canada
 Drawing title/Titre du dessin
**PLAN / PROFILE / SECTION
 CULVERT KM 315.59 &
 CULVERT KM 318.34**

Project No./No. du projet	Sheet/Fauille	Revision no./La Révision no.
R.017173.330	C102 OF C105	0

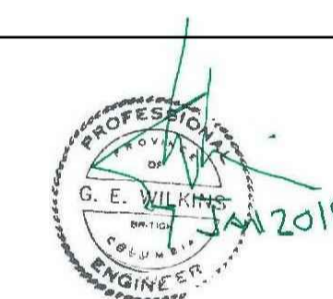
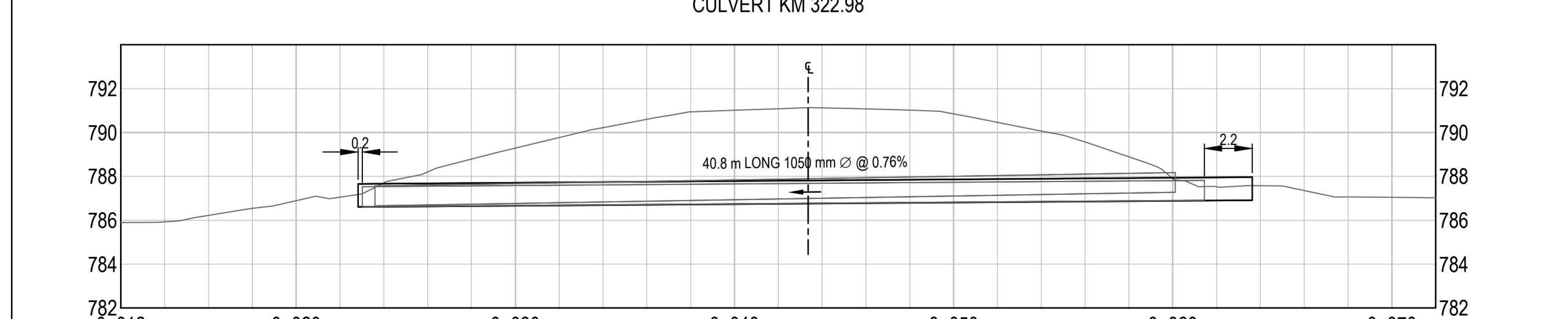
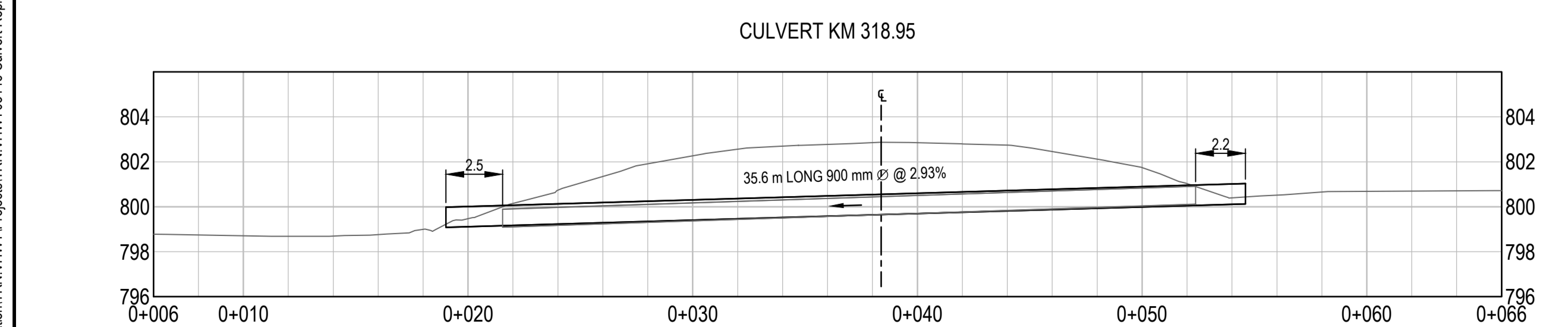
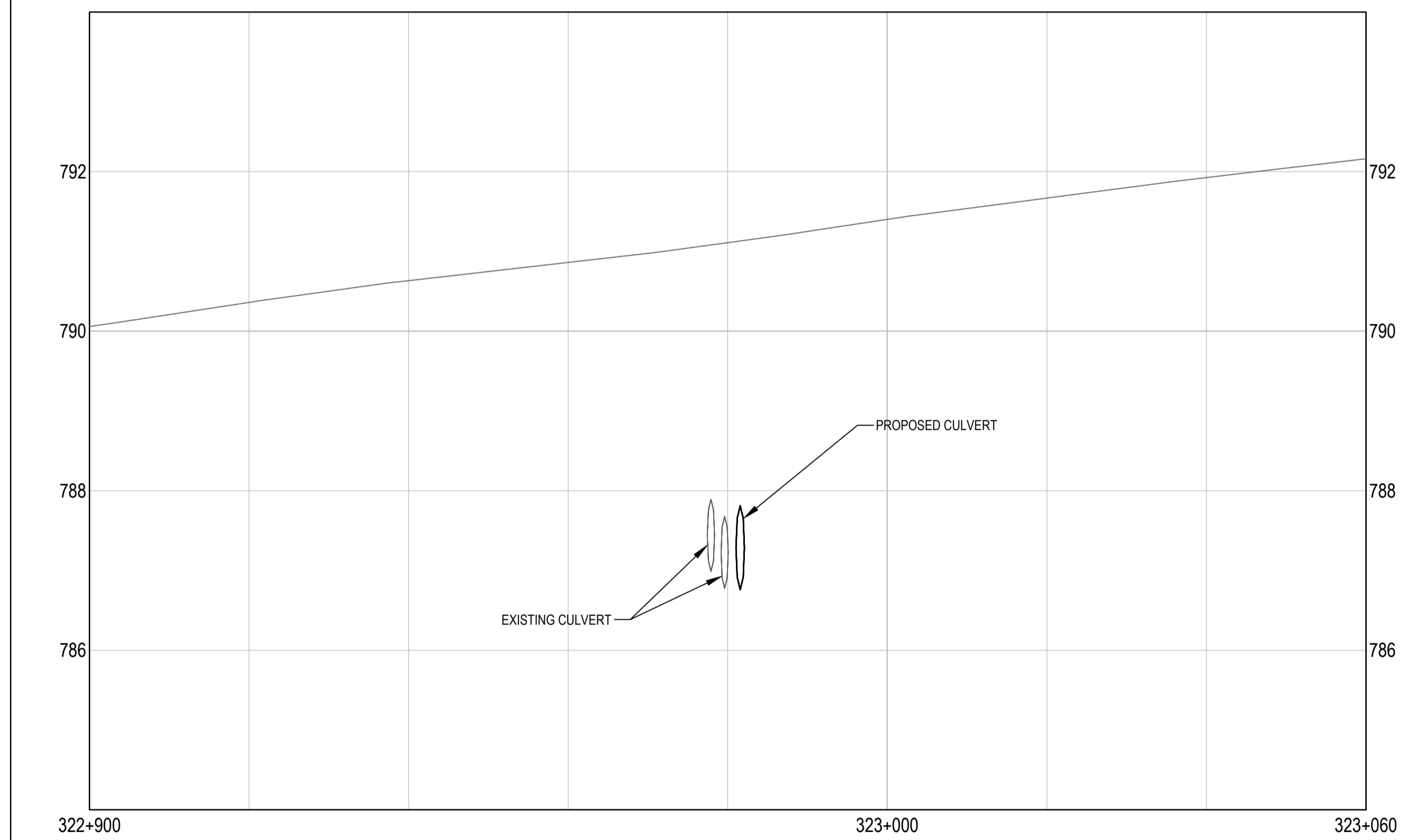
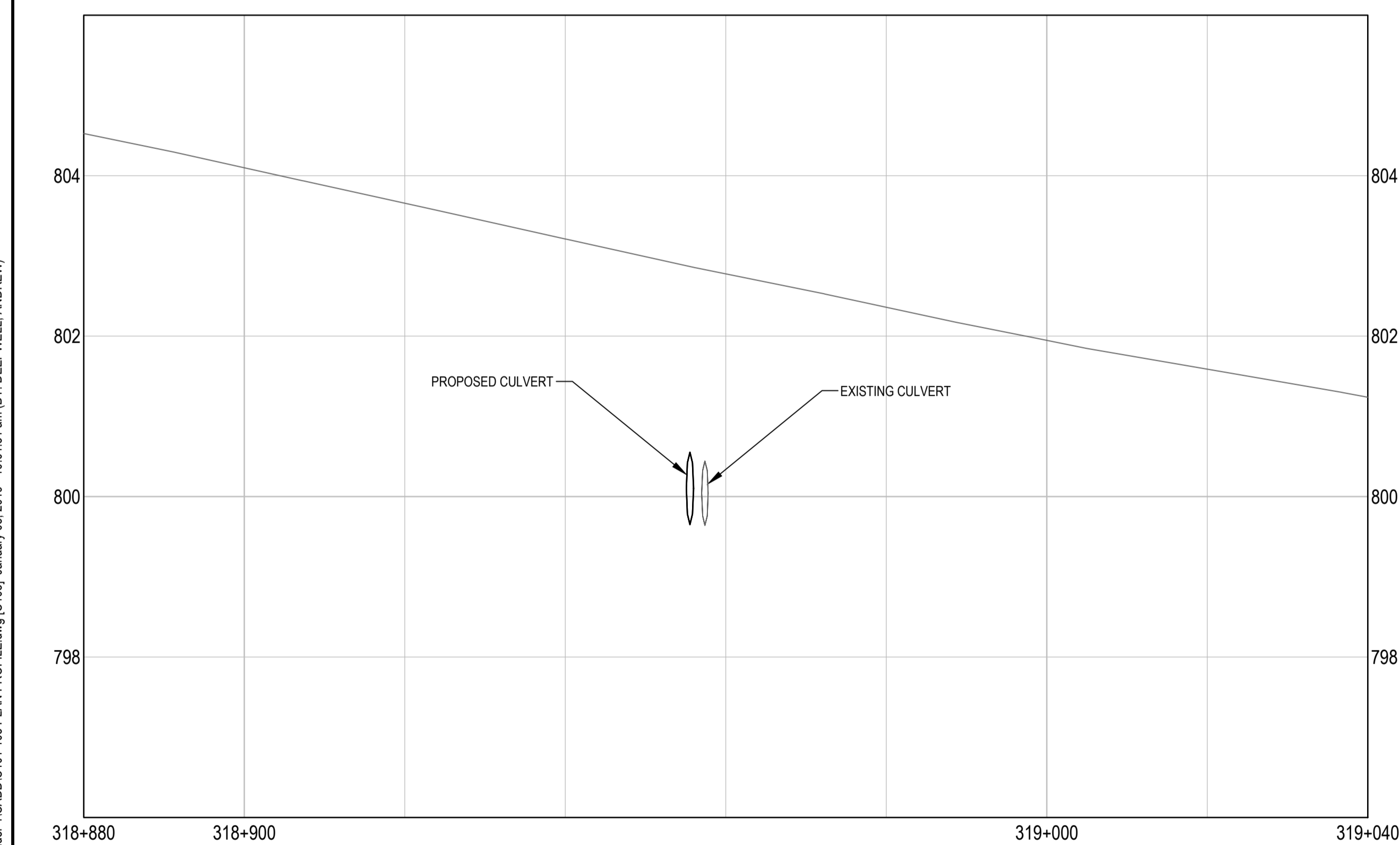
Q:\VancouverTransportation\TRN\VHWY\Projects\TRN\VHWY\03\46\Culvert Replacement\Tender\1\CADD\C101-105 PLAN PROFILE.dwg [C:102] January 08, 2019 - 9:59:31 am (BY: DEEPWELL, ANDREW)

ISSUED FOR TENDER

- GENERAL NOTES:
1. DIMENSIONS, COORDINATES, ELEVATIONS ARE IN METRES UNLESS NOTED OTHERWISE
2. THE CONTRACTOR IS RESPONSIBLE FOR VERIFYING THE LOCATION OF ALL UTILITIES PRIOR TO CONSTRUCTION



FIBRE OPTIC CABLE LOCATED WITHIN VICINITY NOT SHOWN



H:	0	5	1:500	25m
V:	0	0.5	1:50	2.5m

0	ISSUED FOR TENDER	19/01/07
Revision/	Description/Description	Date/Date
Client/client	Public Services and Procurement Canada	

Public Services and Procurement Canada



Project title/Titre du projet
**KM 311 - 330
CULVERT REPLACEMENT
ALASKA HIGHWAY, BC**

Approved by/Approve par
G. WILKINS

Designed by/Concept par
A. HORWOOD

Drawn by/Dessine par
A. DEEPWELL

PSPC Project Manager/Administrateur de Projets SPAC
A. TAHERI

PSPC, Architectural and Engineering Resources Manager/
Ressources Architectural et de Directeur d'Ingénierie, SPAC

Client/client
Public Services and Procurement Canada

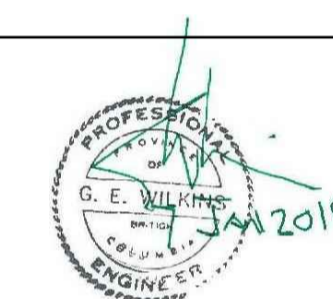
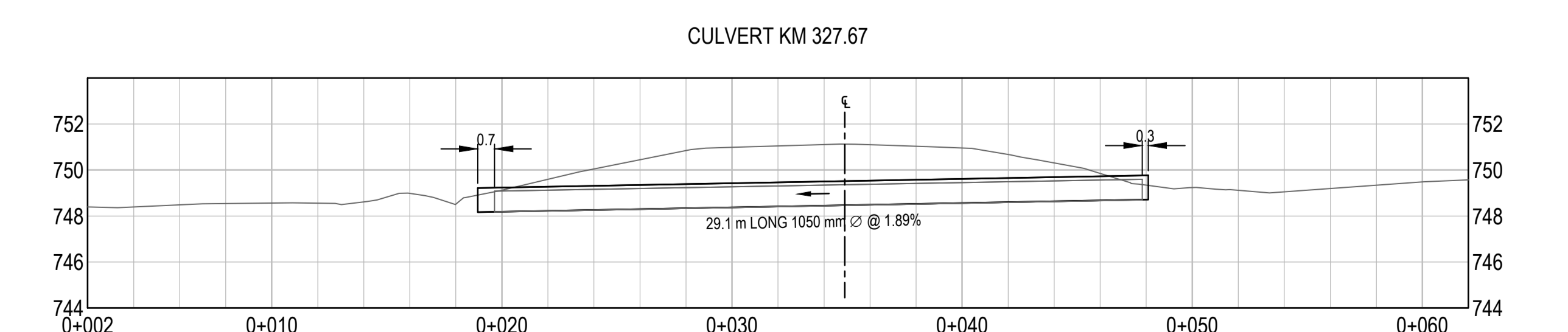
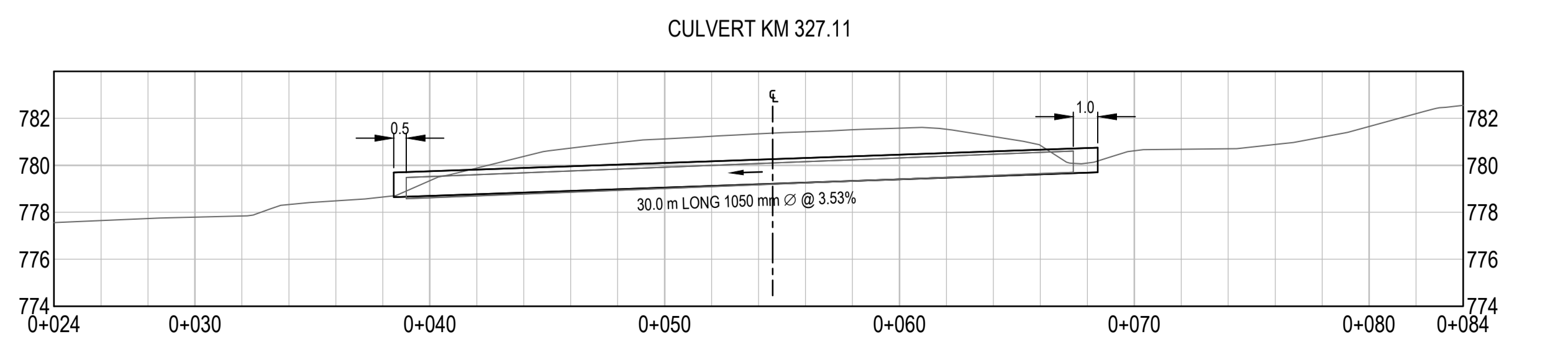
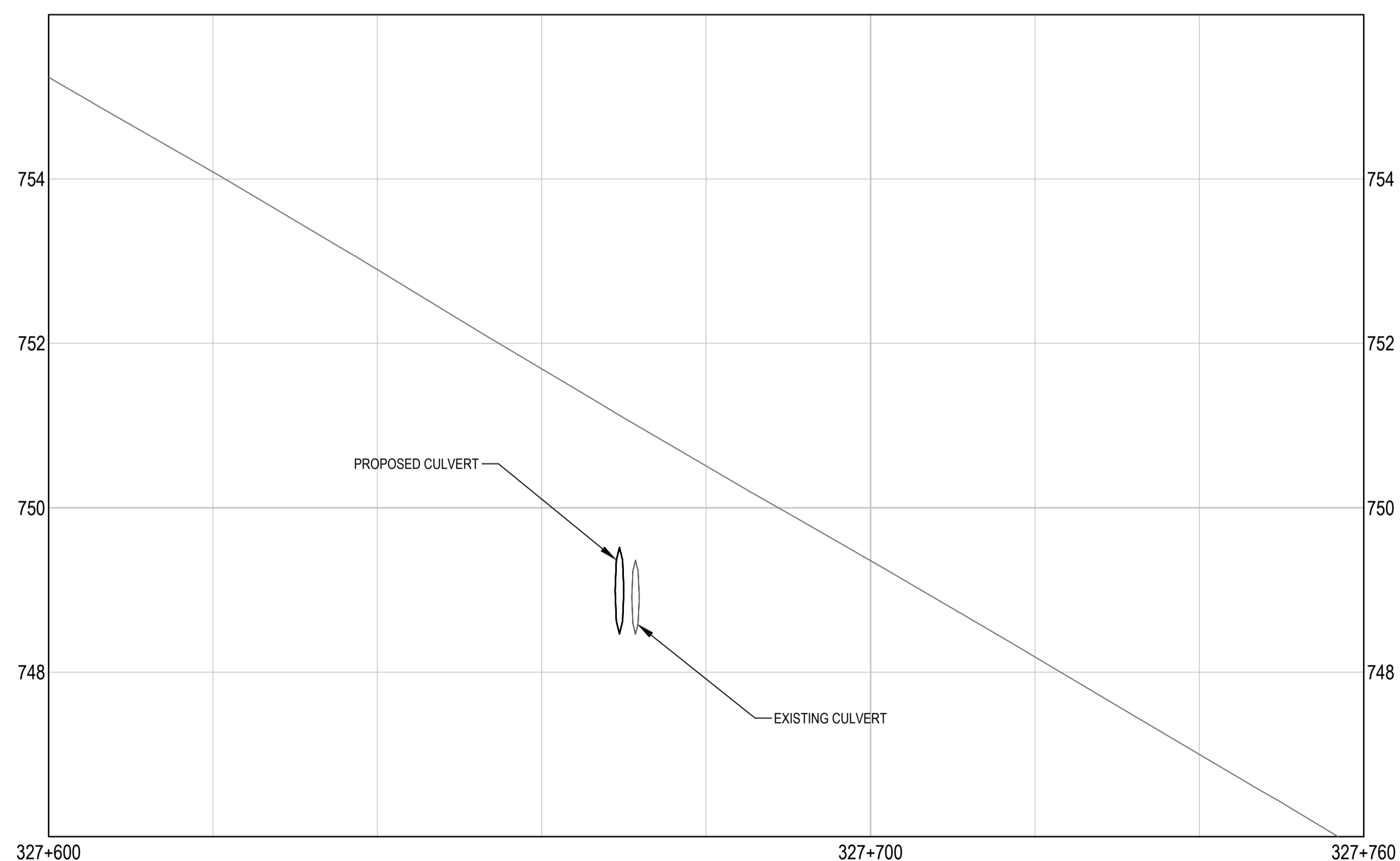
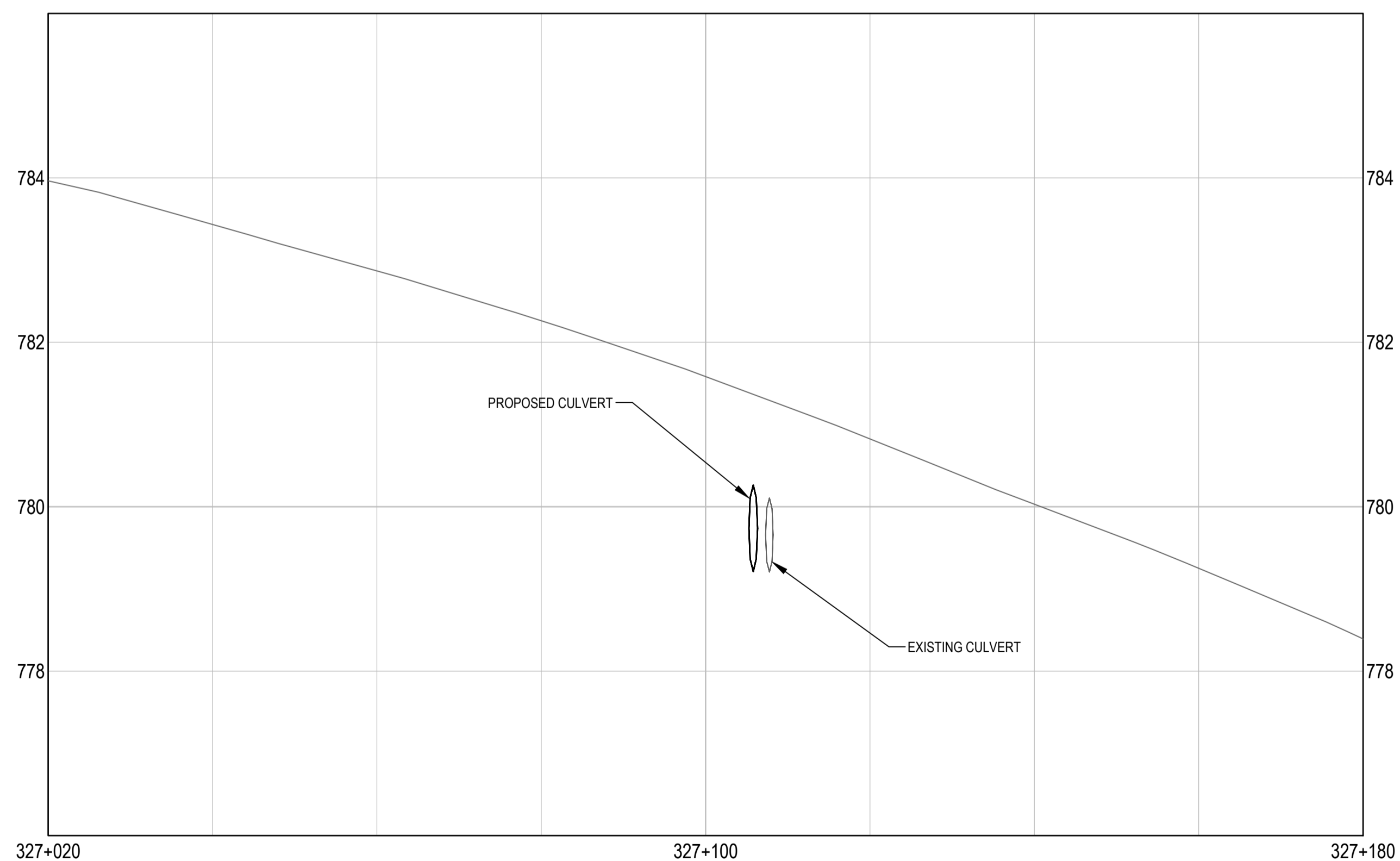
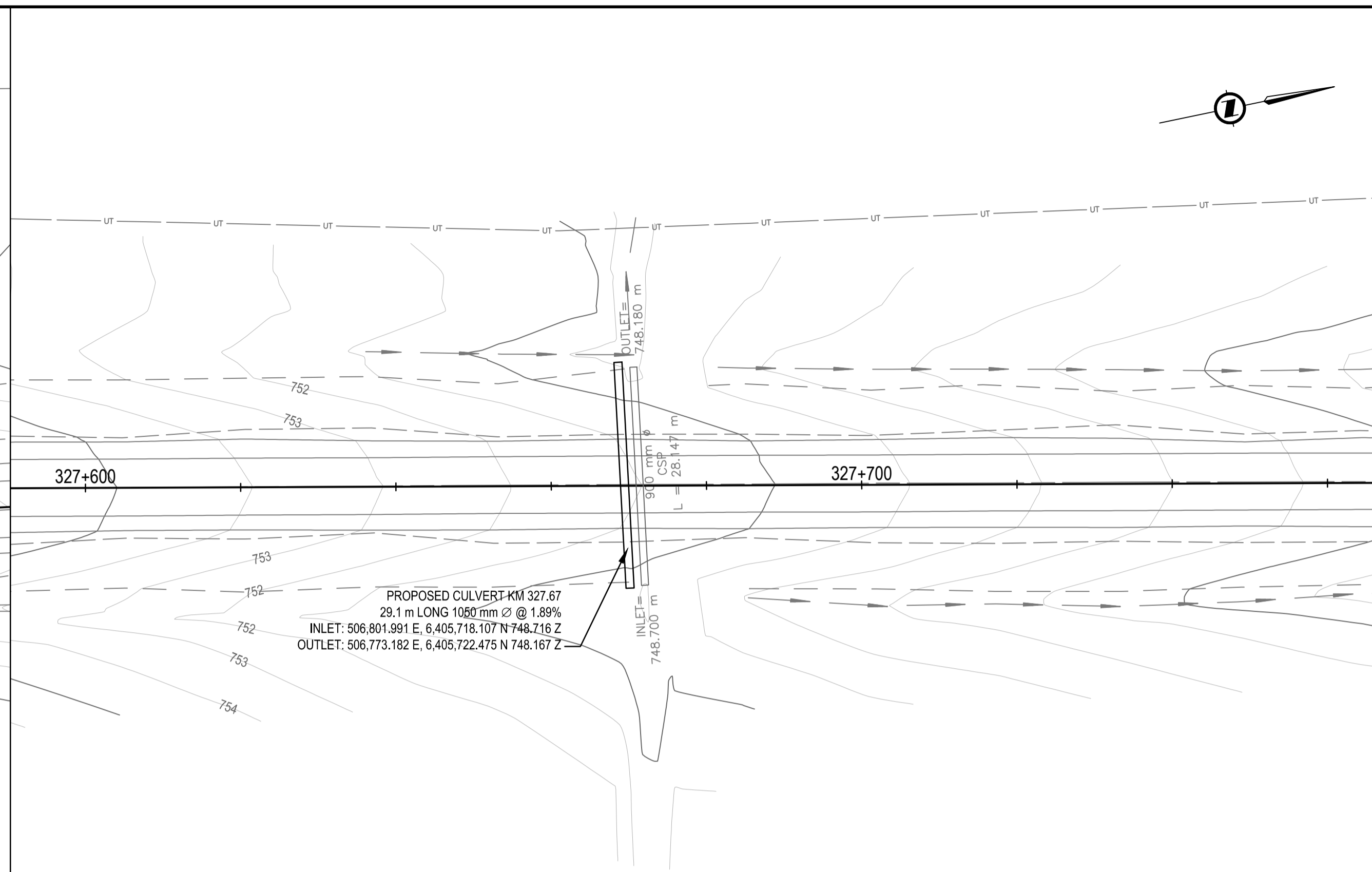
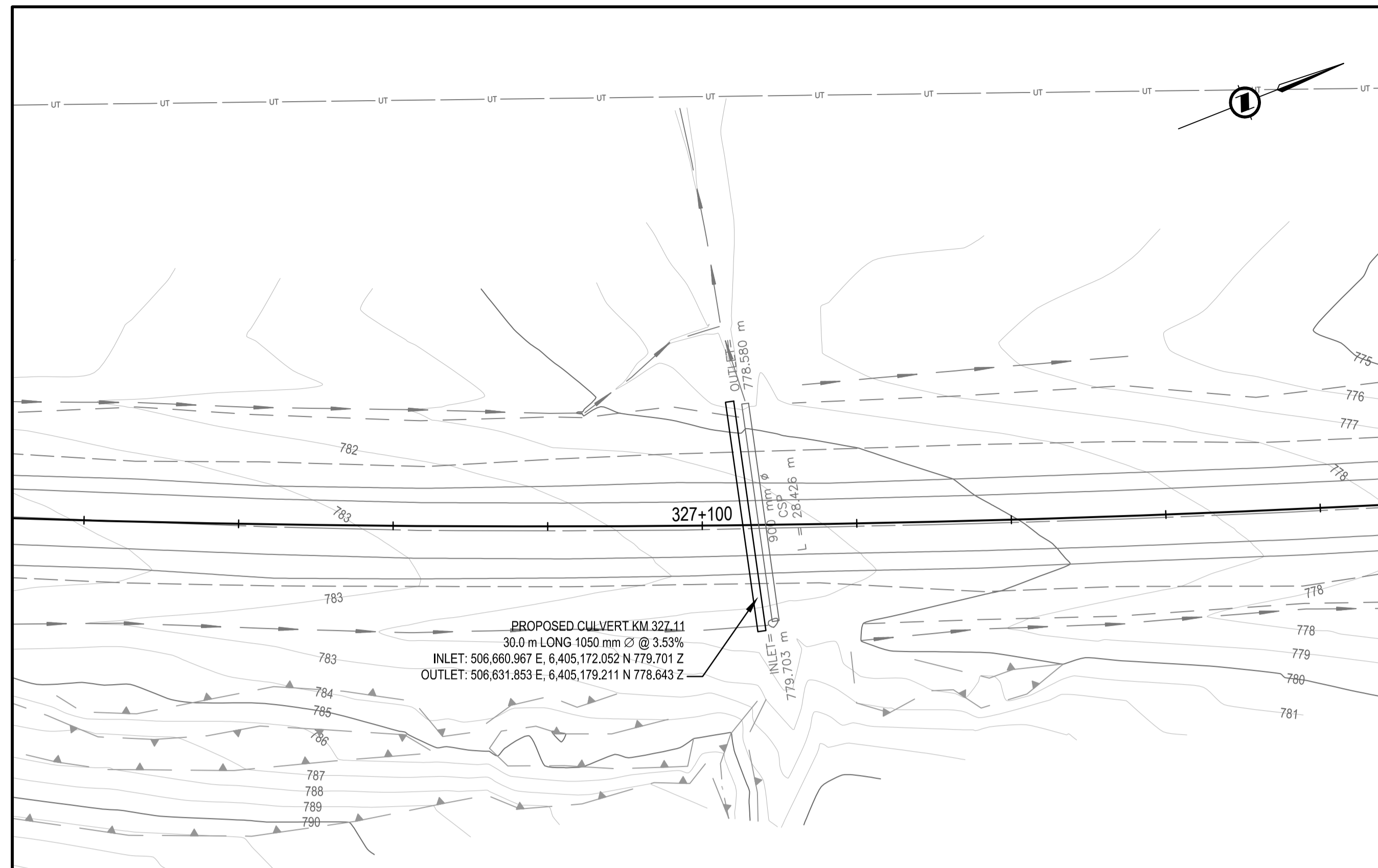
Drawing title/Titre du dessin
**PLAN / PROFILE / SECTION
CULVERT KM 318.95 &
CULVERT KM 322.98**

Project No./No. du projet R.017173.330	Sheet/Fauille C103 OF C105	Revision no./ La Révision no. 0
--	---	--



ISSUED FOR TENDER

- GENERAL NOTES:
1. DIMENSIONS, COORDINATES, ELEVATIONS ARE IN METRES UNLESS NOTED OTHERWISE
2. THE CONTRACTOR IS RESPONSIBLE FOR VERIFYING THE LOCATION OF ALL UTILITIES PRIOR TO CONSTRUCTION



H:	0	5	1:500	25m
V:	0	0.5	1:50	2.5m

Revision/Édition	Description/Description	Date/Date
0	ISSUED FOR TENDER	19/01/07

Client/client
Public Services and Procurement Canada



Project title/Titre du projet
**KM 311 - 330
CULVERT REPLACEMENT
ALASKA HIGHWAY, BC**

Approved by/Approuvé par
G.WILKINS

Designed by/Concept par
A.HORWOOD

Drawn by/Dessiné par
A.DEEPWELL

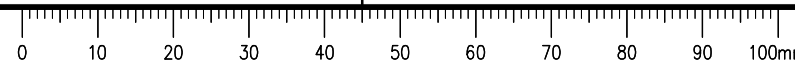
PSPC Project Manager/Administrateur de Projets SPAC
A.TAHERI

PSPC, Architectural and Engineering Resources Manager/
Ressources Architectural et de Directeur d'Ingénierie, SPAC

Client/client
Public Services and Procurement Canada

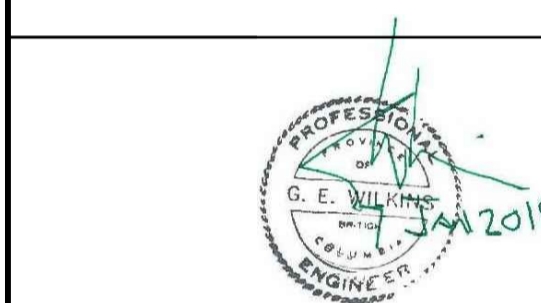
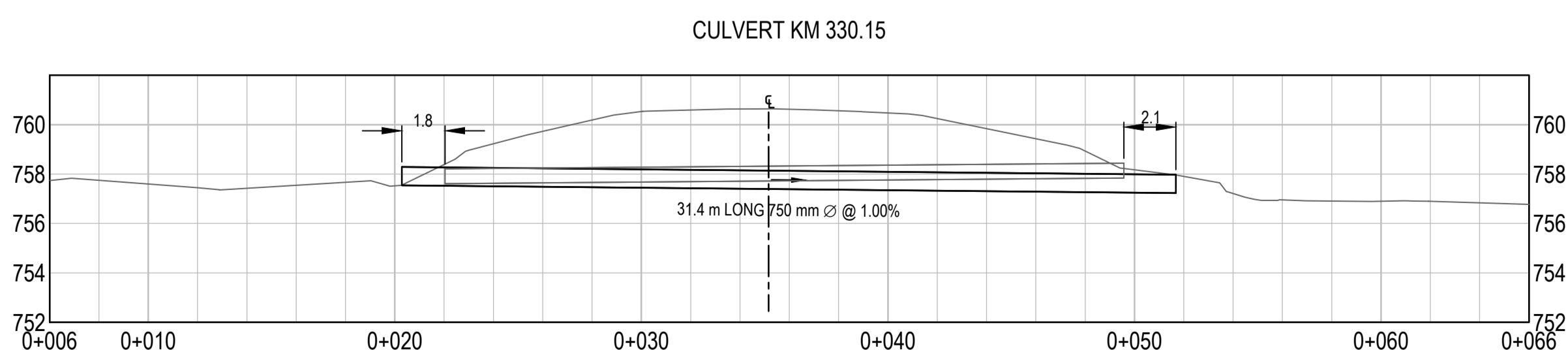
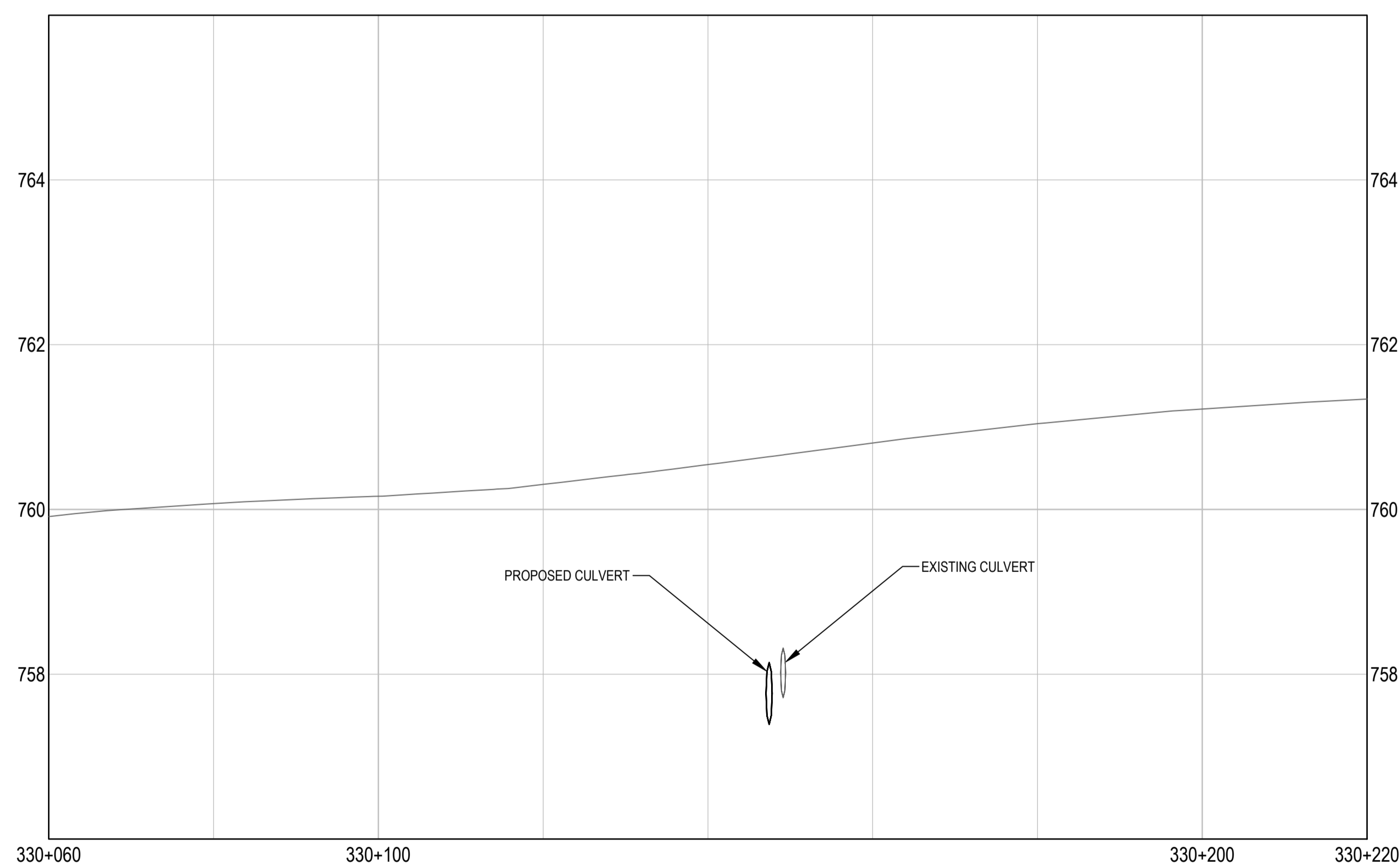
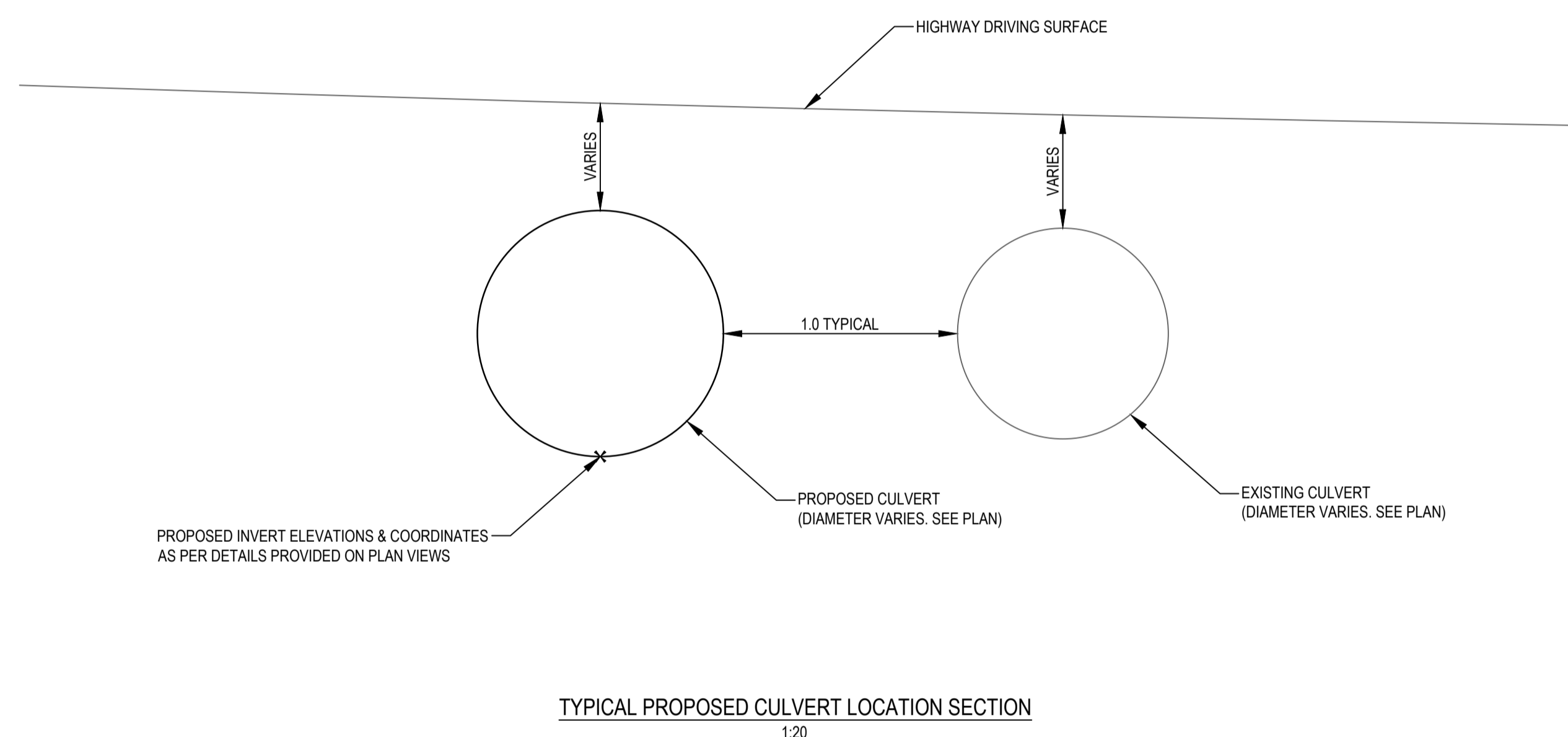
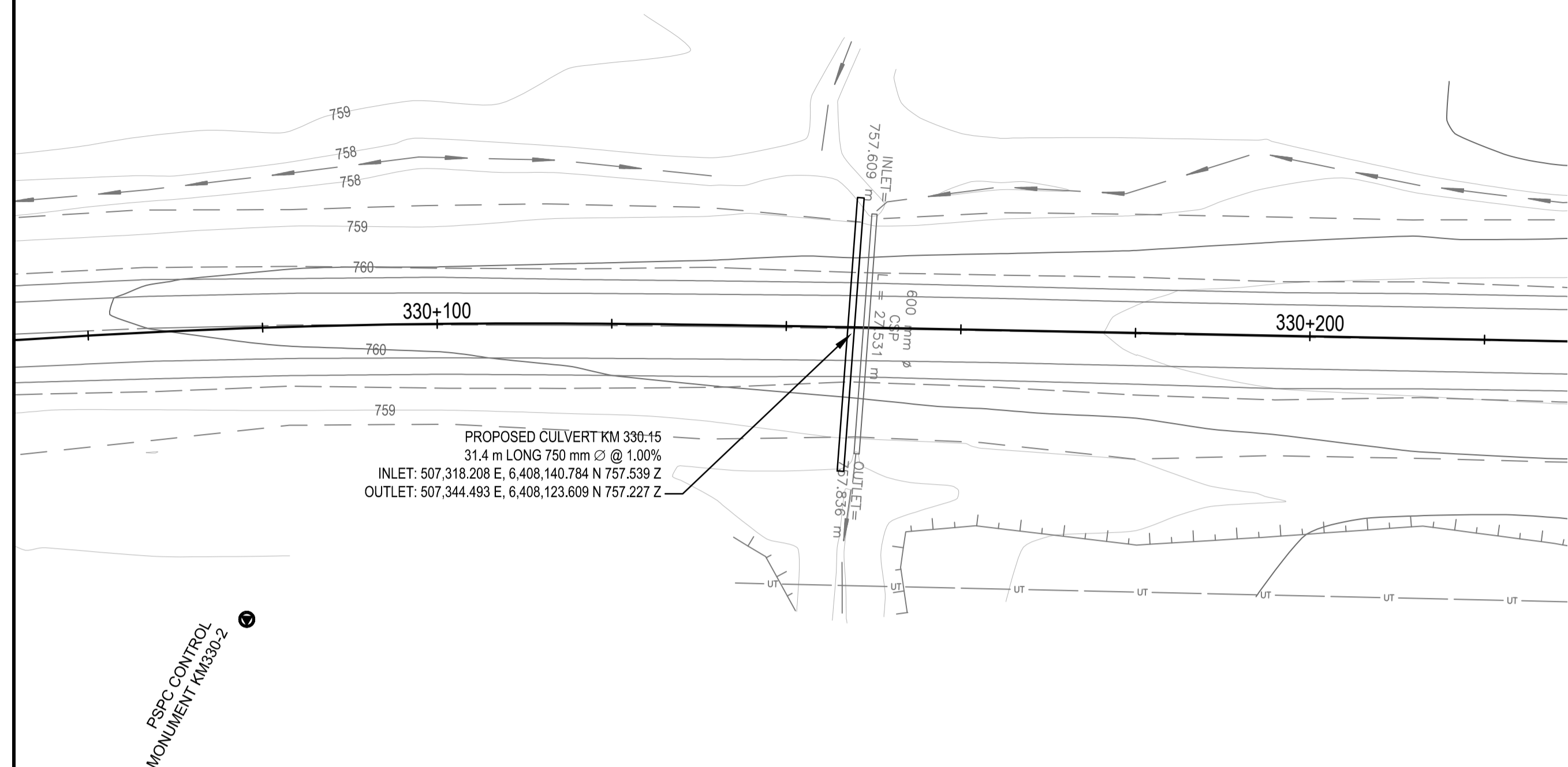
Drawing title/Titre du dessin
**PLAN / PROFILE / SECTION
CULVERT KM 327.11 &
CULVERT KM 327.67**

Project No./No. du projet R.017173.330	Sheet/Fauille C104 OF C105	Revision no./ La Révision no. 0
--	---	--



ISSUED FOR TENDER

- GENERAL NOTES:
- DIMENSIONS, COORDINATES, ELEVATIONS ARE IN METRES UNLESS NOTED OTHERWISE
 - THE CONTRACTOR IS RESPONSIBLE FOR VERIFYING THE LOCATION OF ALL UTILITIES PRIOR TO CONSTRUCTION



H:	0	5	1:500	25m
V:	0	0.5	1:50	2.5m

0	ISSUED FOR TENDER	19/01/07
Revision/	Description/Description	Date/Date
Client/client	Public Services and Procurement Canada	

Public Services and Procurement Canada



Project title/Titre du projet
**KM 311 - 330
CULVERT REPLACEMENT
ALASKA HIGHWAY, BC**

Approved by/Approve par
G. WILKINS

Designed by/Concept par
A. HORWOOD

Drawn by/Dessine par
A. DEEPWELL

PSPC Project Manager/Administrateur de Projets SPAC
A. TAHERI

PSPC, Architectural and Engineering Resources Manager/
Ressources Architectural et de Directeur d'Ingénierie, SPAC

Client/client
Public Services and Procurement Canada

Drawing title/Titre du dessin
**PLAN / PROFILE / SECTION
CULVERT KM 330.15
& TYPICAL SECTION**

Project No./No. du projet R.017173.330	Sheet/Fauille C105 OF C105	Revision no./La Révision no. 0
--	---	--

Q:\VancouverTransportation\TRN_VH\WV\Projects\TRN_VH\WV\03\46 Culvert Replacement\Tender\1\CADD\C101-105 PLAN PROFILE.dwg [C:\05] January 08, 2019 - 10:04:48 am (BY: DEEPWELL, ANDREW)

