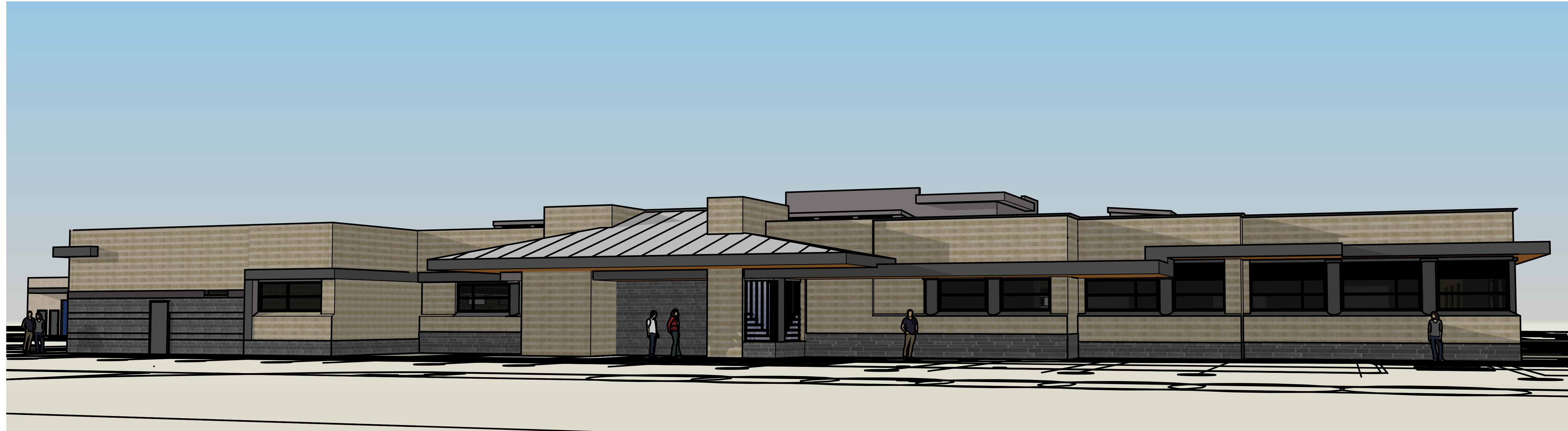


# COALDALE PROTECTIVE SERVICES BUILDING



## LIST OF DRAWINGS

### CIVIL

- C1.0 GRADING & DRAINAGE PLAN & SURFACE DETAILS
- C1.1 UNDERGROUND SERVICING PLAN



### AL-TERRA

5307 - 47 STREET NW  
EDMONTON, ALBERTA T6B 3T4  
T: 780-440-4411

### LANDSCAPE

- L100 LAYOUT PLAN
- L200 PLANTING PLAN
- L300 DETAILS
- L400 IRRIGATION PLAN
- L500 IRRIGATION DETAILS



### McELHANNEY CONSULTING SERVICES LTD.

SUITE 500, 999 - 8 STREET  
CALGARY, ALBERTA T2R 1J5  
T: 403-776-9679

### ARCHITECTURAL

- A1.0 OVERALL SITE PLAN
- A1.1 ENLARGED SITE PLAN
- A1.2 SITE DETAILS
- A2.1 MAIN FLOOR FIRE, SECURITY AND ACOUSTICS
- A2.2 MAIN FLOOR PLAN, WALL TYPES AND LEGENDS
- A2.3 CLERESTORY PLAN
- A2.4 MAIN FLOOR AND CLERESTORY REFLECTED CEILING PLANS & DETAILS
- A2.5 CLERESTORY SECTIONS AND CEILING DETAILS
- A2.6 ROOF PLAN AND DETAILS
- A2.7 ROOF DETAILS
- A2.8 OUT BUILDING FLOOR PLAN, ELEVATIONS, SECTIONS AND DETAILS
- A2.9 INTERSTITIAL PLAN
- A3.1 EXTERIOR ELEVATIONS
- A4.1 BUILDING SECTIONS A-A, B-B, C-C, D-D, E-E AND F-F
- A4.2 BUILDING SECTIONS G-G, H-H, J-J, K-K AND L-L
- A4.3 WALL SECTIONS
- A4.4 WALL SECTIONS
- A4.5 WALL SECTIONS
- A4.6 WALL SECTIONS
- A4.7 WALL SECTIONS
- A4.8 ROOF PLAN LARGE SCALE NORTH HIP DETAILS
- A5.1 LARGE SCALE FLOOR PLANS AND REFLECTED CEILING PLAN
- A5.2 MISCELLANEOUS SECTIONS AND DETAILS
- A6.1 DOOR AND WINDOW ELEVATIONS AND DETAILS
- A6.2 DOOR AND WINDOW DETAILS
- A7.1 PLAN DETAILS
- A7.2 PLAN DETAILS
- A7.3 SECTION PLANS
- A8.1 SECURE AREA INTERIOR ELEVATIONS AND MILLWORK
- A8.2 INTERIOR ELEVATIONS
- A8.3 INTERIOR ELEVATIONS
- A9.1 LARGE SCALE WASHROOM PLANS AND ELEVATIONS
- A9.2 LARGE SCALE RECEPTION PLAN, ELEVATIONS AND DETAILS
- A9.3 MILLWORK ELEVATIONS AND SECTIONS
- A9.4 MILLWORK ELEVATIONS AND SECTIONS
- A10.1 MAIN FLOOR FINISH PLAN
- A11.1 MAIN FLOOR FITMENT PLAN
- A11.2 SIGNAGE PLAN



### STEPHENS KOZAK ACI ARCHITECTS AND PLANNERS INC.

17225 102 AVENUE NW  
EDMONTON, ALBERTA T5S 1J8  
T: 780-486-6400

### STRUCTURAL

- S0.1 GENERAL NOTES
- S0.2 LOAD DIAGRAMS SHEET 1
- S0.3 LOAD DIAGRAMS SHEET 2
- S0.4 TYPICAL DETAIL
- S0.5 TYPICAL DETAIL
- S1.1 PILE PLAN
- S1.2 FOUNDATION PLAN
- S1.3 INTERSTITIAL PLAN
- S1.4 ROOF FRAMING PLAN
- S1.5 MECHANICAL ROOM AND CLERESTORY ROOF FRAMING PLAN
- S1.6 CANOPY FRAMING PLANS
- S1.7 OUTBUILDING PLANS SECTIONS AND DETAILS
- S2.1 FOUNDATION SECTIONS
- S2.2 BASEPLATE DETAILS, PILECAP DETAILS
- S3.1 ROOF SECTIONS SHEET 1
- S3.2 ROOF SECTIONS SHEET 2
- S3.3 ROOF SECTIONS SHEET 3
- S3.4 ROOF SECTIONS SHEET 4
- S3.5 ROOF SECTIONS SHEET 5
- S4.1 WALL ELEVATIONS SHEET 1
- S4.2 WALL ELEVATIONS SHEET 2
- S4.3 OUTBUILDING ELEVATIONS
- S5.1 MISCELLANEOUS DETAILS



### BPTec ENGINEERING LTD.

SUITE 200, 4220 - 98 STREET  
EDMONTON, ALBERTA T6E 6A1  
T: 780-436-5376

### MECHANICAL

- M1.0 MECHANICAL SITE PLAN AND LEGEND
- M2.0 MECHANICAL FOUNDATION PIPING
- M2.1 MECHANICAL MAIN FLOOR PLUMBING
- M3.0 MECHANICAL MAIN FLOOR HEATING & COOLING PLAN
- M4.0 MECHANICAL MAIN FLOOR VENTILATION
- M4.1 MECHANICAL SECTIONS & DIFFUSER SCHEDULE
- M5.0 MECHANICAL MAIN FLOOR FIRE PROTECTION
- M6.0 ROOM 182 LAYOUT
- M6.1 ROOM 182 SECTIONS
- M7.0 MECHANICAL ROOF PLAN
- M8.0 MECHANICAL SCHEMATICS
- M8.1 MECHANICAL SCHEMATICS
- M8.2 MECHANICAL DETAILS
- M8.3 MECHANICAL DETAILS
- M9.0 MECHANICAL EQUIPMENT SCHEDULES
- M9.1 MECHANICAL EQUIPMENT SCHEDULES



### WILLIAMS ENGINEERING CANADA

SUITE 200, 10065 JASPER AVENUE  
EDMONTON, ALBERTA T5J 3B1  
T: 780-424-2393

### ELECTRICAL

- E-0.1 ELECTRICAL SITE PLAN
- E-0.2 ELECTRICAL SITE DETAILS
- E2.0 ELECTRICAL POWER, DATA & SECURITY PLAN
- E2.1 ROOF PLAN & OUTBUILDINGS ELECTRICAL PLANS
- E3.0 LIGHTING PLAN
- E3.1 LUMINAIRE SCHEDULE
- E4.0 LIFE SAFETY PLAN
- E5.0 SINGLE LINE DIAGRAM
- E6.0 PANEL 2A & PANEL 2B SCHEDULES
- E6.1 PANEL 2C, 20B1 & 20B2 SCHEDULES
- E6.2 PANEL 2D AND 2E PANEL SCHEDULES
- E6.3 RELAY SCHEDULES & FIRE ALARM RISER
- E6.4 MECHANICAL EQUIPMENT SCHEDULE
- E7.0 ELECTRICAL DETAILS



### WILLIAMS ENGINEERING CANADA

SUITE 200, 10065 JASPER AVENUE  
EDMONTON, ALBERTA T5J 3B1  
T: 780-424-2393