

KEY PLAN



L'ENTREPRENEUR DEVRA VÉRIFIER TOUTES LES DIMENSIONS ET LES CONDITIONS SUR LE CHANTIER ET AVISER SANS DÉLAI LE REPRÉSENTANT DU MINISTÈRE DE TOUTE ANOMALIE.  
Contractor to verify all dimensions and conditions on site and immediately notify the Departmental Representative of all discrepancies.

4	ISSUED FOR TENDER	2019-01-07
3	ISSUED FOR TENDER REVIEW	2018-11-27
2	ISSUED FOR 99% REVIEW	2018-11-02
1	ISSUED FOR 66% REVIEW	2018-10-12

revisions	description	date
A	A detail no. no. du detail	
B	B location drawing no. sur dessin no.	
C	C drawing no. dessin no.	

project project

DID LAB RENOVATIONS

OTTAWA, ONTARIO

drawing dessin

MECHANICAL DRAWING LIST, LEGENDS & SCHEDULES

Designed By	SH	Conçu par	SH
Date	NOV 2018	(yyyy/mm/dd)	
Drawn By	JC	Dessiné par	JC
Date	NOV 2018	(yyyy/mm/dd)	
Reviewed By	SH	Examiné par	SH
Date	NOV 2018	(yyyy/mm/dd)	
Approved By	SH	Approuvé par	SH
Date	NOV 2018	(yyyy/mm/dd)	
Tender	ANNE RICHARDS	Soumission	

Project Manager Administrateur de projets  
Project no. No. du projet

PTS 4845

Drawing no. No. du dessin

M001

TAG	DOMESTIC COLD WATER (mm)	DOMESTIC HOT WATER (mm)	SANITARY (mm)	R.O. WATER (mm)	BASIS OF DESIGN	TRIM MANUFACTURER/MODEL
F-1	-	-	-	13	CHICAGO FAUCETS MODEL 838-CP	PURE WATER FITTING, TYGON LINED, DECK-MOUNTED, CHROME PLATED, 1/2" NPT MALE THREAD INLET
L-1	13	13	40	-	EXISTING PLUMBING FIXTURE	EXISTING PLUMBING FIXTURE
S-1	13	13	40	-	FRANKE MODEL LBS8014P-1/1	18 GAUGE STAINLESS STEEL, 14" DEEP SINGLE BOWL (508x521x203 mm) COUNTERTOP MOUNT SINK C/W P-TRAP, MOUNTING HARDWARE AND ACCESSORIES. FAUCETS: AMERICAN STANDARD ARCH SINGLE HANDLE FAUCET, MODEL: 4101.100.002 POLISHED CHROME
S-2	13	13	40	-	FRANKE MODEL LBS8008-1/1	20 GAUGE STAINLESS STEEL, SINGLE BOWL (508x521x203 mm) COUNTERTOP MOUNT SINK C/W P-TRAP, MOUNTING HARDWARE AND ACCESSORIES. FAUCETS: AMERICAN STANDARD ARCH SINGLE HANDLE FAUCET, MODEL: 4101.100.075 STAINLESS STEEL
S-3	13	13	40	-	-	SINK PROVIDED WITH MILLWORK. PROVIDE P-TRAP, MOUNTING HARDWARE AND ACCESSORIES. FAUCET: CHICAGO FAUCETS TWO HANDLES FAUCET, MODEL 930-3179KCP C/W STAINLESS STEEL SERRATED SUPPLY HOSE, CHROME-PLATED FINISH, CAST BRASS FAUCET, CERAMIC DISC CARTRIDGE

NOTES:  
1. COORDINATE EXACT PIPING LOCATIONS ON SITE.  
2. VENT TO MEET OBC REQUIREMENTS. VENTING THROUGH SLOPED ROOFS NOT PERMITTED.  
3. ALL SINKS IDENTIFIED AS BUILT-IN (BINS) BY GENERAL TRADES. ALL OTHER ASSOCIATED ACCESSORIES AND TRIM BY MECHANICAL. ALL PIPEWORK TO BE INSTALLED NEATLY AND COORDINATED WITH ALL OTHER TRADES.  
4. MANUFACTURER NAME & MODEL NUMBER REPRESENT ACCEPTABLE QUALITY STANDARD ONLY.  
5. MINIMUM UNDERGROUND SANITARY PIPING SIZE TO BE 50A.  
6. INSTALLATION OF SINK TO COMPLY WITH LATEST EDITION OF CSA B651 STANDARD FOR BARRIER-FREE ACCESS. INSULATE DOMESTIC HOT WATER AND DRAIN PIPING UNDER COUNTER. SEE ARCH. DWG FOR DETAILS. ACCEPTABLE MATERIAL: SKALLGUARD WHITE OR MINERAL FIBRE WITH WHITE PVC JACKET.

TAG	LOCATION	AIR FLOW (L/s)	E.S.P. (Pa)	COOLING COIL					ELECTRICAL DATA		BASIS OF DESIGN		
				TOTAL CAPACITY (kW)	SENSIBLE CAPACITY (kW)	WATER FLOW (L/s)	ENT (°C)	LWT (°C)	EAT (°C)	FLUID PRESSURE DROP (kPa)		MOTOR SIZE (HP)	V/PH/Hz
FC-1	ROOM 3120	580	62.5	10.6	10	0.5	7.2	12.8	23.9	25.8	2x 1/4	115/1/60	ENVIRO-TEC HPE20

NOTES: 1. FOR DETAILS REFER TO SPECIFICATIONS.

TAG	TYPE	MODULE (mm)	INLET (mm)	MOUNT	FINISH	REMARKS
SD1	RADIAL SUPPLY DIFFUSER	1200x600	AS INDICATED	T-BAR	WHITE	* MULTI-ANGULAR PERFORATED FACE, NON-ASPIRATING C/W DIRECTIONAL CONTROL VANES
SD2	SQUARE SUPPLY AIR DIFFUSER	600x600	AS INDICATED	T-BAR	WHITE	* C/W FIXED PATTERN
SD3	SQUARE SUPPLY AIR DIFFUSER	300x300	AS INDICATED	T-BAR	WHITE	* EXISTING EQUIPMENT
RG1	RETURN AIR GRILLE	600x250	AS INDICATED	T-BAR	WHITE	* EGGRATE FACE, 13x13mm GRID
RG2	RETURN AIR GRILLE	300x300	AS INDICATED	T-BAR	WHITE	* EXISTING EQUIPMENT

NOTES:  
1. FOR DETAILS REFER TO SPECIFICATIONS.  
2. UNLESS OTHERWISE INDICATED, GRILLE & DIFFUSER AIRFLOWS SHALL BE BALANCED TO THE MAXIMUM OCCUPIED AIRFLOW OF THE RESPECTIVE CONTROL POINT, DIVIDED BY THE NUMBER OF CONNECTED GRILLES / DIFFUSERS.

TAG	LOCATION	TYPE	NOMINAL DIMENSIONS (W x H x D) (mm)	AIRFLOW (L/s)		ELECTRICAL DATA		SERVICE CONNECTION REQUIRED				SUPPORT LEGS REQUIRED	ASSOCIATED CABINETS	BASIS OF DESIGN
				MAX	MIN	OUTLET	V/PH/Hz	COLD WATER	SANITARY	NITROGEN GAS	CLIP SINK			
FFH-1	EXTRACTION LAB 3107	FLOOR MOUNTED (WALK-IN) FUMEHOOD	2438x2413x1100	385	200	2x20 AMP DUPLEX	115/1/60	-	-	YES	-	-	-	LABCONCO 112827002
FFH-2	EXTRACTION LAB 3107	FLOOR MOUNTED (WALK-IN) FUMEHOOD	2438x2413x1100	385	200	2x20 AMP DUPLEX	115/1/60	-	-	YES	-	-	LABCONCO 112827002	
FFH-3	EXTRACTION LAB 3107	FLOOR MOUNTED (WALK-IN) FUMEHOOD	2438x2413x1100	385	200	2x20 AMP DUPLEX	115/1/60	-	-	YES	-	-	LABCONCO 112827002	
FFH-1	SAMPLING LAB 3113	LABORATORY FUMEHOOD	1829x1499x805	280	75	2x20 AMP GFI DUPLEX	115/1/60	YES	YES	-	YES	-	2xFLAMMABLE LABCONCO 110610002	
FFH-2	SAMPLING LAB 3113	LABORATORY FUMEHOOD	1829x1499x805	280	75	2x20 AMP GFI DUPLEX	115/1/60	YES	YES	-	YES	-	2xFLAMMABLE LABCONCO 110610002	
FFH-3	EXTRACTION LAB 3107	LABORATORY FUMEHOOD	1524x1499x805	165	60	2x20 AMP DUPLEX	115/1/60	-	-	YES	-	YES	LABCONCO 110510002	
FFH-4	EXTRACTION LAB 3107	LABORATORY FUMEHOOD	1524x1499x805	165	60	2x20 AMP DUPLEX	115/1/60	-	-	YES	-	YES	LABCONCO 110510002	
FFH-5	EXTRACTION LAB 3107	LABORATORY FUMEHOOD	1524x1499x805	165	60	2x20 AMP DUPLEX	115/1/60	-	-	YES	-	YES	LABCONCO 110510002	
FFH-6	EXTRACTION LAB 3107	LABORATORY FUMEHOOD	1524x1499x805	165	60	2x20 AMP GFI DUPLEX	115/1/60	YES	YES	YES	YES	-	1xACID & 1xFLAMMABLE LABCONCO 110510002	
FFH-7	EXTRACTION LAB 3107	LABORATORY FUMEHOOD	1524x1499x805	165	60	2x20 AMP DUPLEX	115/1/60	-	-	YES	-	-	2xFLAMMABLE LABCONCO 110510002	
FFH-8	EXTRACTION LAB 3107	LABORATORY FUMEHOOD	1524x1499x805	165	60	2x20 AMP DUPLEX	115/1/60	-	-	YES	-	-	2xFLAMMABLE LABCONCO 110510002	
FFH-9	EXTRACTION LAB 3107	LABORATORY FUMEHOOD	1524x1499x805	165	60	2x20 AMP DUPLEX	115/1/60	-	-	YES	-	-	2xFLAMMABLE LABCONCO 110510002	
FFH-10	EXTRACTION LAB 3107	LABORATORY FUMEHOOD	1524x1499x805	165	60	2x20 AMP DUPLEX	115/1/60	-	-	YES	-	-	2xFLAMMABLE LABCONCO 110510002	

NOTES:  
1. FOR DETAILS REFER TO SPECIFICATIONS.  
2. MAXIMUM FLOW BASED ON FACE VELOCITY OF 0.4 m/s.

SYMBOL	DESCRIPTION
CO2	CARBON DIOXIDE
CA	COMPRESSED AIR
N2	NITROGEN GAS
NG	NATURAL GAS
GT	GAS TURRET

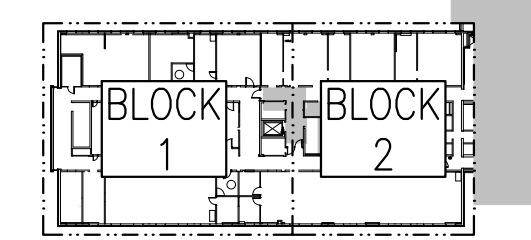
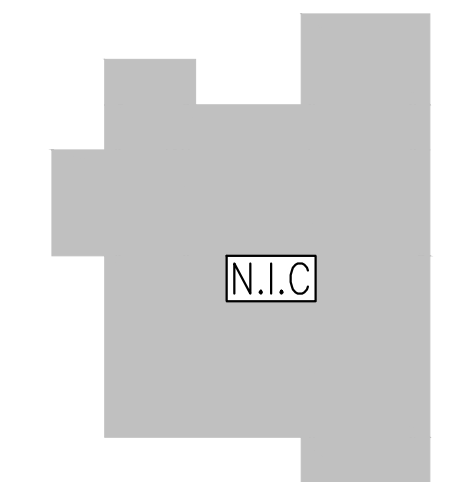
SYMBOL	DESCRIPTION
---	PIPING OFFSET
---	PIPING DOWN
---	PIPING UP
---	PIPING BRANCH DOWN
---	PIPING SIZE REDUCER
---	PIPING BREAK
---	PIPING CAP
---	DOMESTIC COLD WATER PIPING
---	DOMESTIC HOT WATER PIPING
---	DOMESTIC HOT WATER RECIRCULATION PIPING
---	SANITARY PIPING
---	STORM PIPING
---	REVERSE OSMOSIS WATER
---	LOW PRESSURE STEAM
---	LOW PRESSURE CONDENSATE
---	MEDIUM PRESSURE STEAM
---	MEDIUM PRESSURE CONDENSATE
---	CHILLED WATER SUPPLY
---	CHILLED WATER RETURN
---	ISOLATION VALVE
---	FLOOR DRAIN (FD)
---	HUB DRAIN (HD)
---	CLEAN OUT
---	FLOOR CLEAN OUT
---	EXPANSION JOINT c/w GUIDES
---	PRESSURE REDUCING VALVE (PRV)
---	MOTORIZED VALVE
---	STRAINER
---	CHECK VALVE
---	RELIEF VALVE
---	EMERGENCY SHUT-OFF VALVE
---	CIRCUIT BALANCING VALVE (CBV)
---	AUTOMATIC AIR VENT C/W VALVE
---	PRESSURE GAUGE C/W VALVE
---	THERMOMETER
---	CUP SINK
---	DISHWASHER
---	FAUCET
---	SINK
---	LAVATORY
---	SHOWER HEAD
---	SPRAY WAND
---	EMERGENCY SHOWER STATION
---	EMERGENCY EYEWASH STATION
---	EMERGENCY EYEWASH AND SHOWER STATION

SYMBOL	DESCRIPTION
○	SEMI-RECESSED SPRINKLER
○	CONCEALED SPRINKLER
●	HIGH TEMPERATURE UPRIGHT SPRINKLER c/w CAGE
○	UPRIGHT SPRINKLER c/w CAGE
○	FIRE EXTINGUISHER (FE)
○	SEMI-RECESSED FIRE EXTINGUISHER CABINET (FEC)
○	RECESSED FIRE EXTINGUISHER CABINET (FER)
○	FIRE HOSE CABINET (FHC)

Sheet Number	Sheet Title
M001	DRAWING LIST, LEGENDS & SCHEDULES
M001	MECHANICAL: GRND FLOOR - BLOCK 1
M301	HVAC DEMOLITION
M304	HVAC & PLUMBING NEW WORK
M101	MECHANICAL: THIRD FLOOR
M101	FIRE PROTECTION DEMOLITION & NEW WORK
M201	MECHANICAL: THIRD FLOOR - BLOCK 1
M201	PLUMBING DEMOLITION
M203	PLUMBING NEW WORK
M302	HVAC DEMOLITION
M305	HVAC AND UTILITIES NEW WORK
M202	MECHANICAL: THIRD FLOOR - BLOCK 2
M202	PLUMBING DEMOLITION
M204	PLUMBING NEW WORK
M303	HVAC DEMOLITION
M306	HVAC AND UTILITIES NEW WORK

SYMBOL	DESCRIPTION
---	EXISTING PIPING / DUCTWORK / EQUIPMENT
---	PIPING / DUCTWORK / EQUIPMENT TO BE REMOVED OR RELOCATED
---	NEW OR RELOCATED PIPING / DUCTWORK / EQUIPMENT
---	EXISTING PIPING / DUCTWORK / EQUIPMENT BELOW SLAB
---	NEW PIPING / DUCTWORK / EQUIPMENT BELOW SLAB
(E)	EXISTS EXISTING EQUIPMENT
(R)	RELOCATED EQUIPMENT
(N)	NEW EQUIPMENT
(X)	EQUIPMENT TO BE REMOVED

SYMBOL	DESCRIPTION
---	CONTROL WIRING
---	TEMPERATURE SENSOR
---	CABINET FAN
---	SPEED CONTROLLER
---	FAN COIL UNIT (FC)
---	RECTANGULAR DUCTWORK
---	ROUND DUCTWORK
---	ACOUSTICALLY LINED DUCTWORK (SUPPLY OR RETURN)
---	THERMALLY INSULATED DUCTWORK (SUPPLY OR RETURN)
---	ACOUSTICALLY LINED TRANSFER AIR DUCTWORK
---	TURNING VANES
---	SUPPLY DIFFUSER
---	DUCTWORK UP
---	DUCTWORK DOWN
---	RETURN / EXHAUST GRILLE
---	CONICAL TAKE-OFF c/w BALANCING DAMPER
---	CONICAL TAKE-OFF
---	FLEXIBLE CONNECTION
---	FIRE DAMPER
---	SECURITY BAR
---	BALANCING DAMPER
---	MOTORIZED DAMPER
---	EXTRACTOR ARM
---	FUME HOOD
---	FLOOR MOUNTED FUME HOOD
---	DIFFUSER TAG DIFFUSER TYPE AIRFLOW (L/S) SIZE (mm)
---	GRILLE TAG GRILLE TYPE AIRFLOW (L/S) DIMENSIONS (mm)

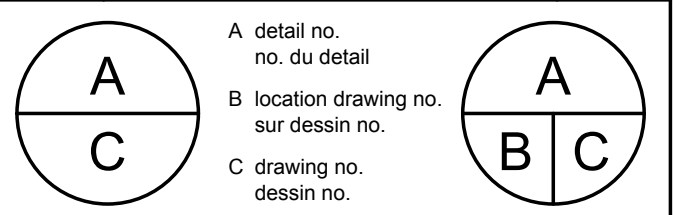


KEY PLAN



L'ENTREPRENEUR DEVRA VÉRIFIER TOUTES LES DIMENSIONS ET LES CONDITIONS SUR LE CHANTIER ET AVISER SANS DÉLAI LE REPRÉSENTANT DU MINISTÈRE DE TOUTE ANOMALIE.  
 Contractor to verify all dimensions and conditions on site and immediately notify the Departmental Representative of all discrepancies.

revisions	description	date
4	ISSUED FOR TENDER	2019-01-07
3	ISSUED FOR TENDER REVIEW	2018-11-27
2	ISSUED FOR 99% REVIEW	2018-11-02
1	ISSUED FOR 66% REVIEW	2018-10-12



project project

**DID LAB RENOVATIONS**

OTTAWA, ONTARIO

drawing dessin

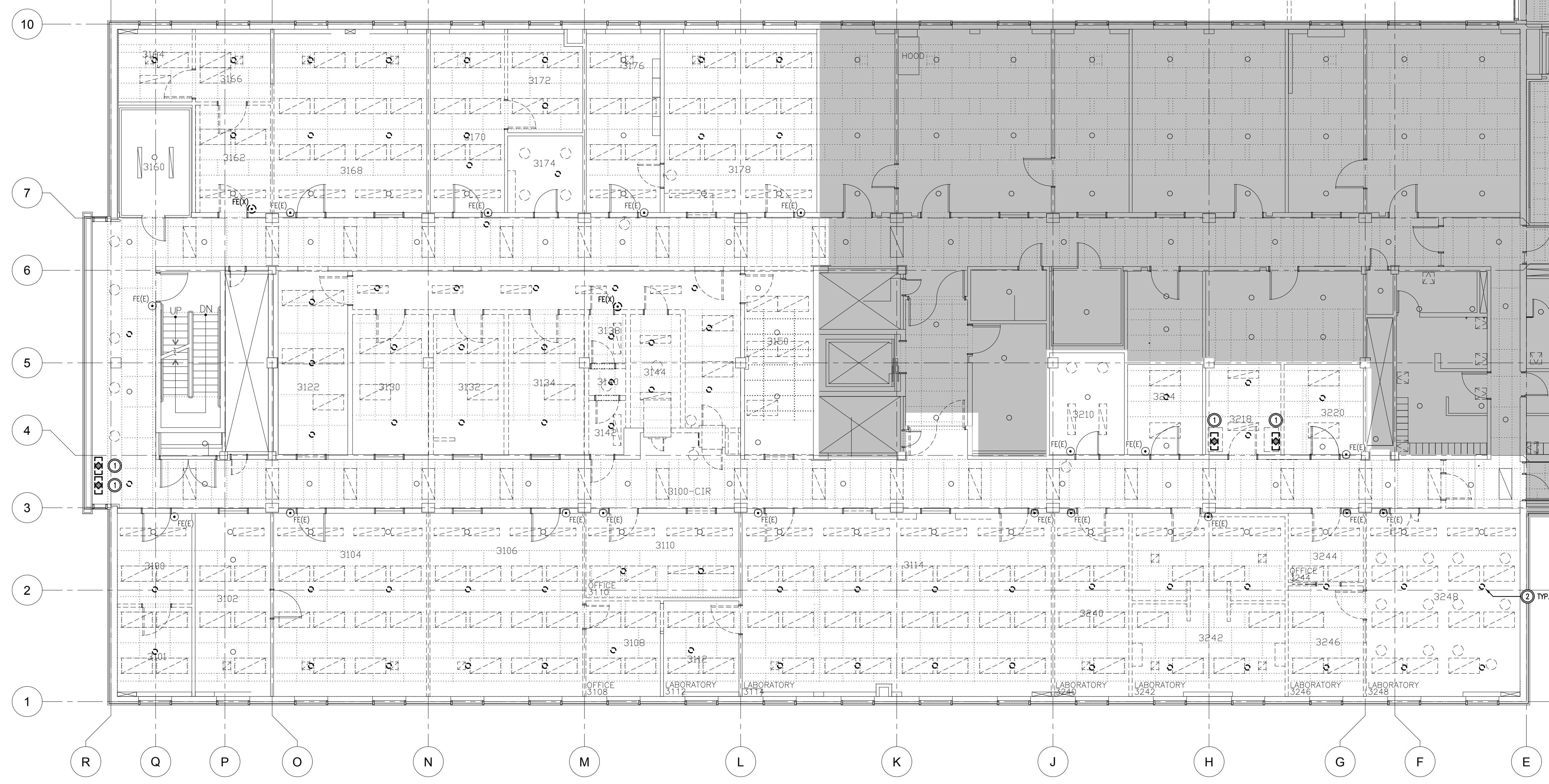
**THIRD FLOOR FIRE PROTECTION DEMOLITION & NEW WORK**

Designed By SH	Conçu par
Date NOV 2018	(yyyy/mm/dd)
Drawn By JC	Dessiné par
Date NOV 2018	(yyyy/mm/dd)
Reviewed By SH	Examiné par
Date NOV 2018	(yyyy/mm/dd)
Approved By SH	Approuvé par
Date NOV 2018	(yyyy/mm/dd)
Tender ANNE RICHARDS	Soumission

Project Manager Administrateur de projets  
 Project no. No. du projet

**PTS 4845**

Drawing no. No. du dessin  
**M101**



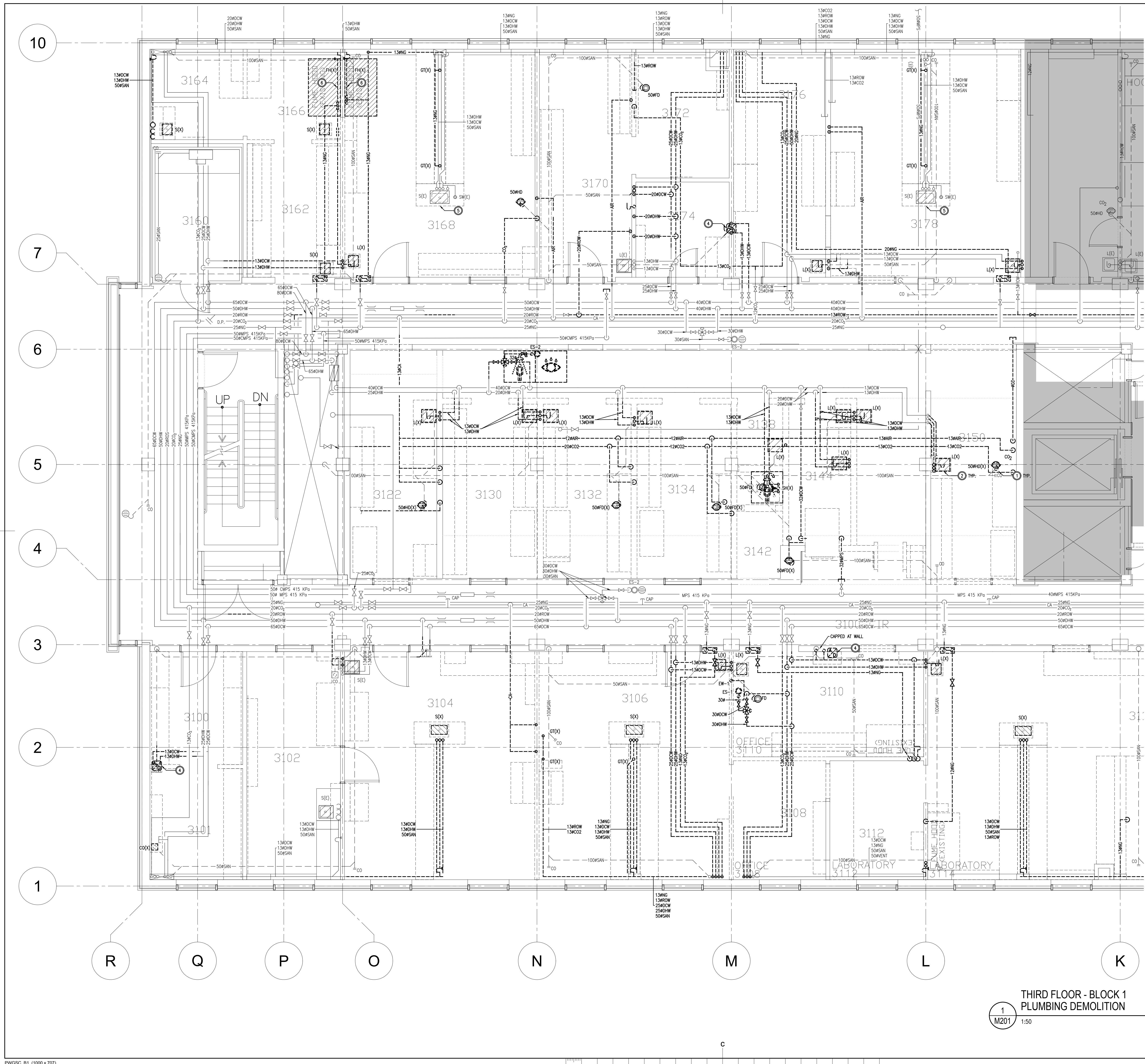
- DRAWING NOTES**
- REMOVE EXISTING PRE-ACTION SYSTEM C/W ASSOCIATED PIPING & ACCESSORIES. SPRINKLERS SHALL BE RE-CONNECTED TO THE EXISTING WET PIPE SYSTEM.
  - REMOVE EXISTING SPRINKLERS AS INDICATED. CAP UNUSED BRANCH PIPES AT MAINS.

**THIRD FLOOR FIRE PROTECTION - DEMOLITION**  
 1 M101 1:100



- DRAWING NOTES**
- PROVIDE NEW SPRINKLERS AS INDICATED. CAP UNUSED BRANCH PIPES AT MAINS.

**THIRD FLOOR FIRE PROTECTION - NEW WORK**  
 2 M101 1:100



- DRAWING NOTES**
- WHERE SAN PIPE IS SHOWN TO BE DEMOLISHED, CAP PIPE IN CEILING BELOW.
  - REMOVE PLUMBING FIXTURES AS INDICATED C/W ASSOCIATED DOW, DHW, SAN, AND VENT PIPING. RETAIN LAVATORY & SENSOR OPERATED FAUCET FOR RE-USE IN NEW WORK WHERE INDICATED.
  - REMOVE NG, CO2, CA & ROW PIPING AS INDICATED. CONNECT ROW PIPING TOGETHER TO MAINTAIN CONTINUOUS LOOP.
  - REMOVE TRAP SEAL PRIMER. CAP PRIMER PIPING FLUSH WITH FLOOR.
  - DISCONNECT PIPING FROM SINK TO BE REMOVED WITH MILLWORK. RETAIN FAUCET & SPRAY HOSE FOR REUSE IN NEW WORK.
  - DISCONNECT DOW & SAN PIPING FROM FUMEHOOD TO BE REMOVED.

Government of Canada / Gouvernement du Canada

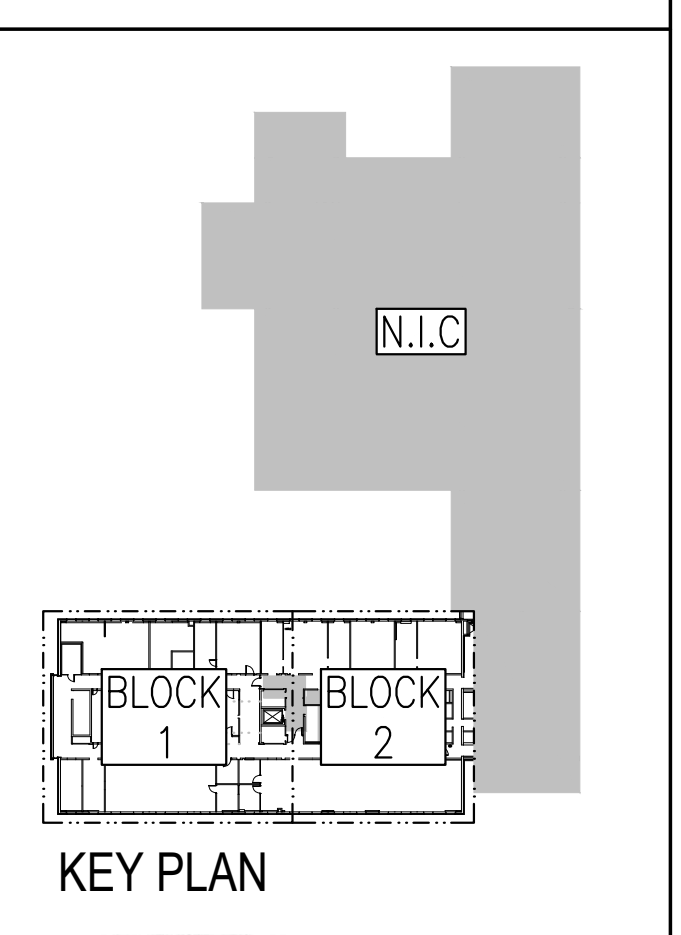
**Canada**

**PETER J. KINDREE ARCHITECT**

79 Hinton Avenue N. Ottawa K1Y 0Z7 (613) 860-1530

**Goodkey Weedmark Consulting Engineers**

GOODKEY WEEDMARK & ASSOCIATES LIMITED  
 1888 Woodward Dr. Ottawa Ontario Canada K2C 3R8  
 613 727-5111 Voice 613 727-5115 Fax 613 727-5115 Web  
 GWA Project #2018-363



L'ENTREPRENEUR DEVRA VÉRIFIER TOUTES LES DIMENSIONS ET LES CONDITIONS SUR LE CHANTIER ET AVISER SANS DÉLAI LE REPRÉSENTANT DU MINISTÈRE DE TOUTE ANOMALIE.

Contractor to verify all dimensions and conditions on site and immediately notify the Departmental Representative of all discrepancies.

revisions	description	date
4	ISSUED FOR TENDER	2019-01-07
3	ISSUED FOR TENDER REVIEW	2018-11-27
2	ISSUED FOR 99% REVIEW	2018-11-02
1	ISSUED FOR 66% REVIEW	2018-10-12

project: **DID LAB RENOVATIONS**

project: **DID LAB RENOVATIONS**

**DID LAB RENOVATIONS**

OTTAWA, ONTARIO

drawing: **MECHANICAL THIRD FLOOR - BLOCK 1 PLUMBING DEMOLITION**

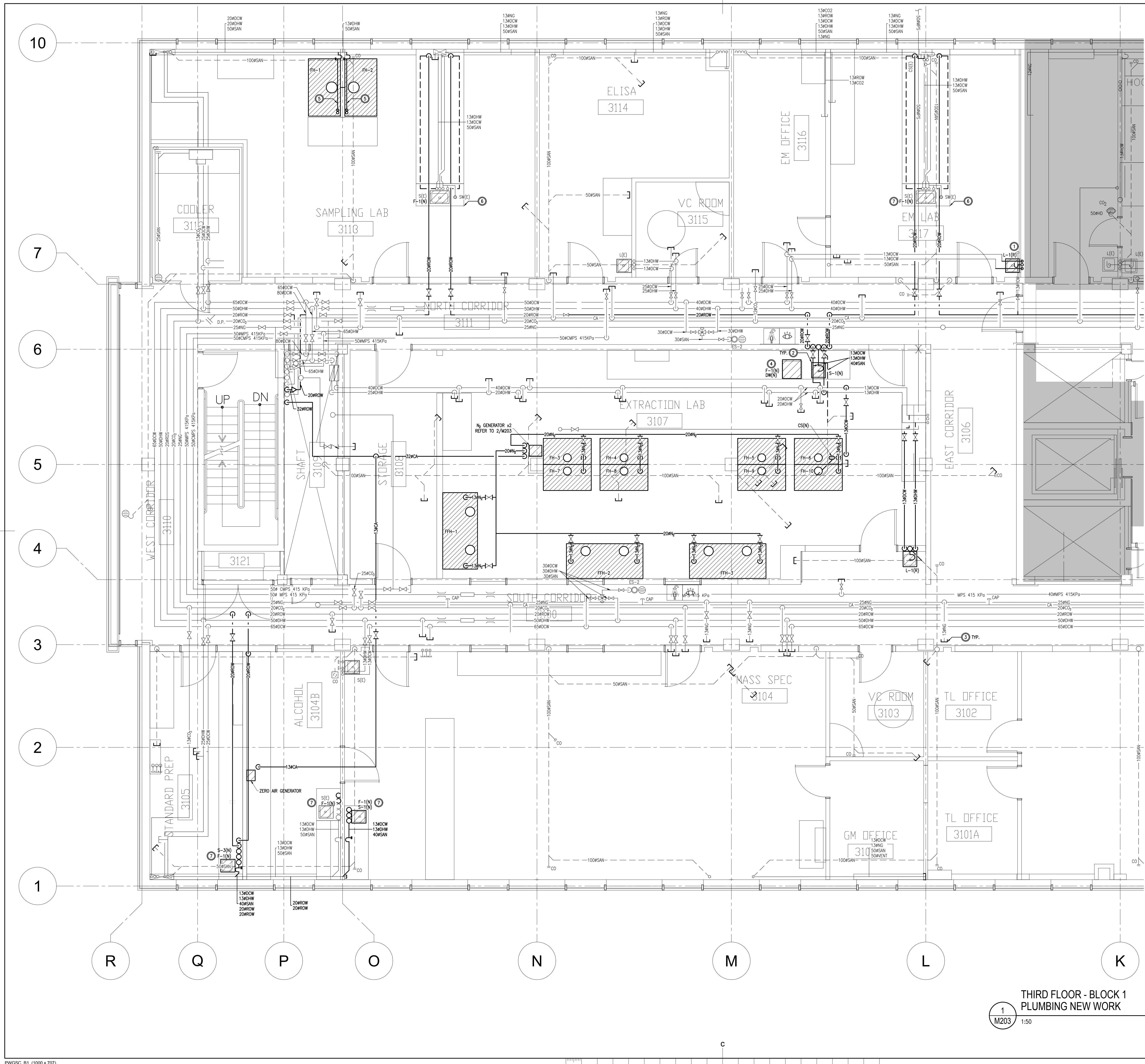
dessin: **MECHANICAL THIRD FLOOR - BLOCK 1 PLUMBING DEMOLITION**

Designed By	SH	Conçu par	SH
Date	NOV 2018	(yyyy/mm/dd)	
Drawn By	JC	Dessiné par	JC
Date	NOV 2018	(yyyy/mm/dd)	
Reviewed By	SH	Examiné par	SH
Date	NOV 2018	(yyyy/mm/dd)	
Approved By	SH	Approuvé par	SH
Date	NOV 2018	(yyyy/mm/dd)	
Tender	ANNE RICHARDS	Soumission	
Project Manager	Administrateur de projets		
Project no.	No. du projet		
	<b>PTS 4845</b>		
Drawing no.	No. du dessin		
	<b>M201</b>		

**THIRD FLOOR - BLOCK 1 PLUMBING DEMOLITION**

1 M201 1:50





- DRAWING NOTES**
- RE-INSTALL EXISTING FIXTURE REMOVED DURING DEMOLITION TO ALLOW FOR INSTALLATION OF SECURE WALL. EXTEND PIPING ACCORDINGLY.
  - PROVIDE NEW PLUMBING FIXTURES WHERE INDICATED C/W DOW, DWH, SAN AND VENTING PIPING.
  - CAP PIPING WHERE INDICATED.
  - PROVIDE CONNECTION FROM R.O SYSTEM TO DISHWASHER FAUCET & MILIPORE SYSTEM.
  - RE-INSTALL EXISTING PIPING REMOVED DURING DEMOLITION TO ALLOW FOR INSTALLATION OF FUMEHOOD.
  - RE-INSTALL FAUCET & SPRAY HOSE RETAINED FROM DEMOLITION.
  - PROVIDE NEW R.O FAUCET F-1 AT FIXTURE C/W ISOLATION VALVE & PIPING.

Government of Canada / Gouvernement du Canada

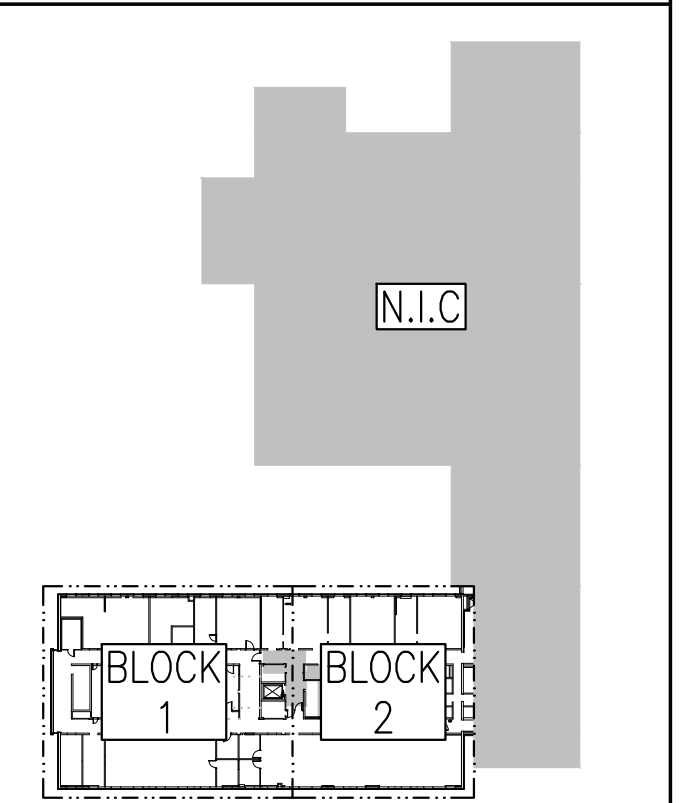
**Canada**

**PETER J. KINDREE ARCHITECT**

79 Hinton Avenue N.  
Ottawa K1Y 0Z7 (613) 860-1530

**Goodkey Weedmark Consulting Engineers**

GOODKEY WEEDMARK & ASSOCIATES LIMITED  
1888 Woodward Dr. Ottawa Ontario G2C 3R8  
Canada K2C 3R8 G.W.A. Project #2018-363  
613 727-5111 Voice  
613 727-5115 Fax  
www.gwe.com Web

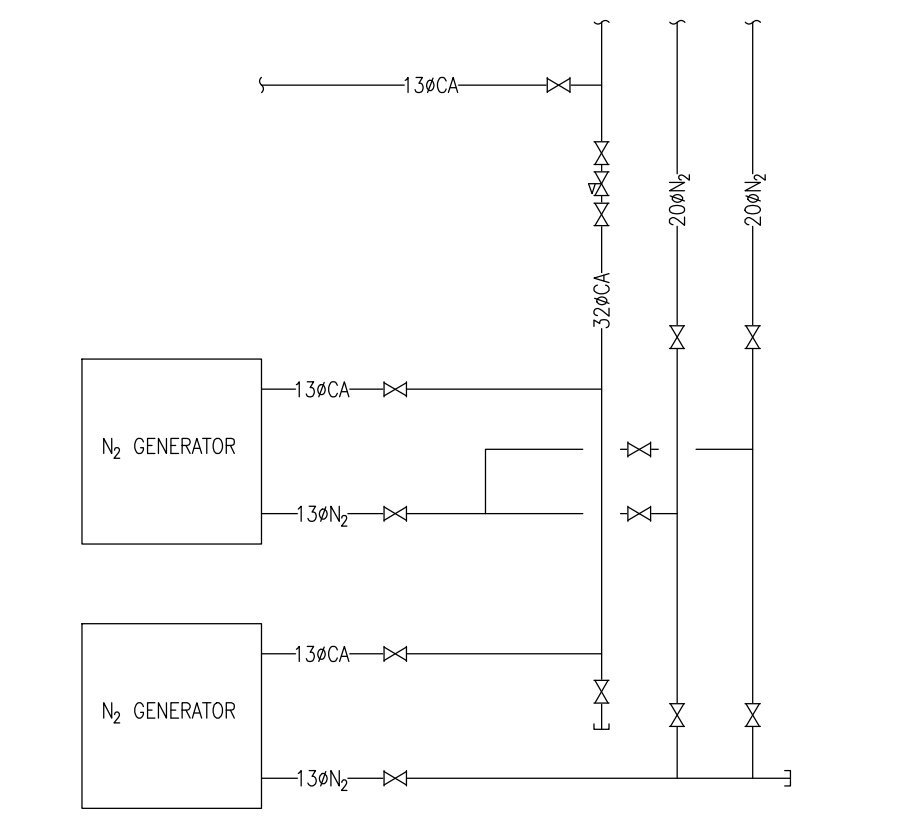


**KEY PLAN**

PROFESSIONAL ENGINEER  
S. D. HAMILTON  
90992770  
PROVINCE OF ONTARIO

L'ENTREPRENEUR DEVRA VÉRIFIER TOUTES LES DIMENSIONS ET LES CONDITIONS SUR LE CHANTIER ET AVISER SANS DÉLAI LE REPRÉSENTANT DU MINISTÈRE DE TOUTE ANOMALIE.

Contractor to verify all dimensions and conditions on site and immediately notify the Departmental Representative of all discrepancies.



**NITROGEN GENERATOR SCHEMATIC**  
M203 N.T.S.

**THIRD FLOOR - BLOCK 1 PLUMBING NEW WORK**

1 M203 1:50

revisions	description	date
4	ISSUED FOR TENDER	2019-01-07
3	ISSUED FOR TENDER REVIEW	2018-11-27
2	ISSUED FOR 99% REVIEW	2018-11-02
1	ISSUED FOR 66% REVIEW	2018-10-12

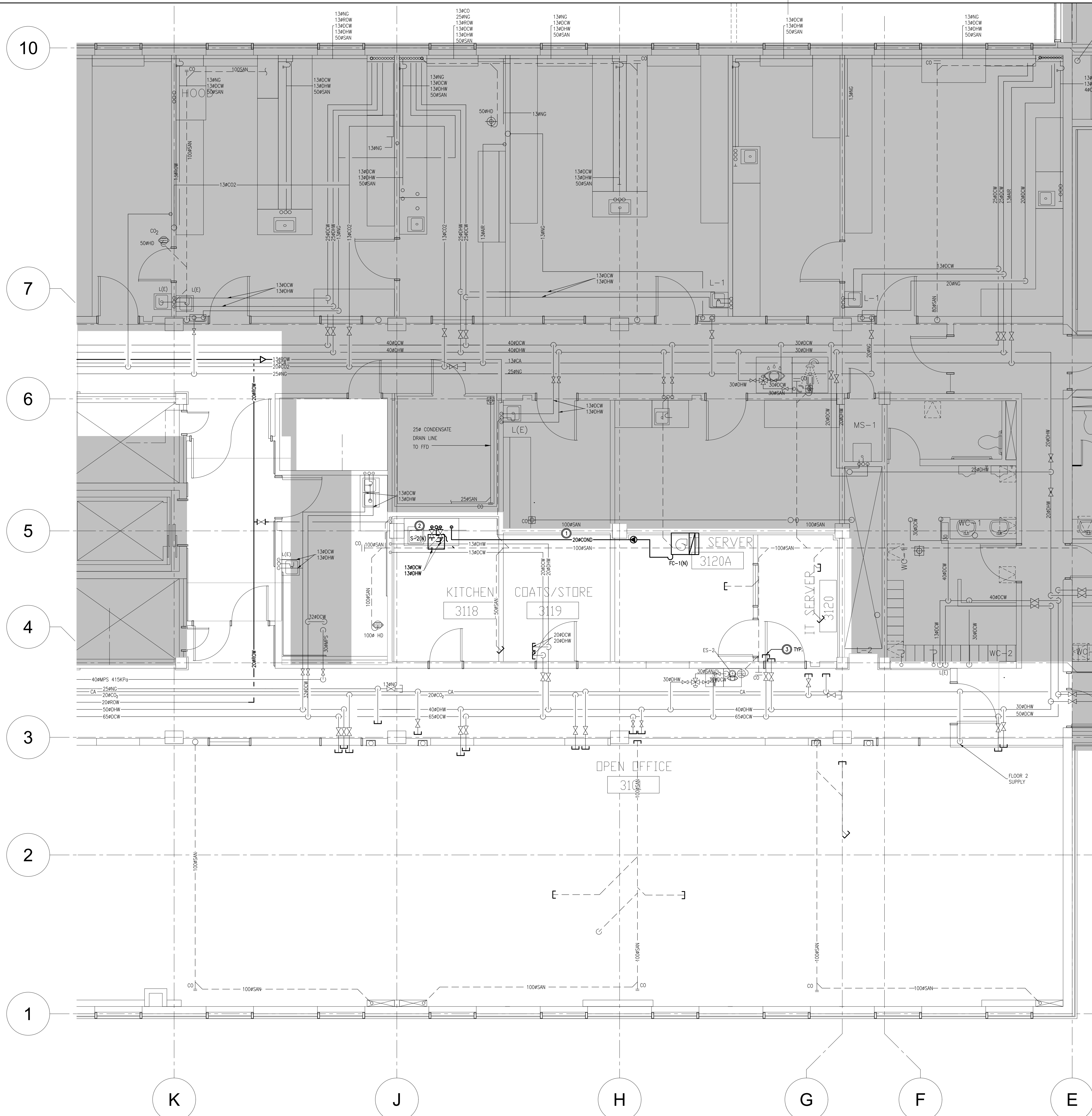
A	B	C
A	B	C

project DID LAB RENOVATIONS  
OTTAWA, ONTARIO

drawing **MECHANICAL THIRD FLOOR - BLOCK 1 PLUMBING NEW WORK** dessin

Designed By SH	Conçu par SH
Date NOV 2018	(yyyy/mm/dd)
Drawn By JC	Dessiné par JC
Date NOV 2018	(yyyy/mm/dd)
Reviewed By SH	Examiné par SH
Date NOV 2018	(yyyy/mm/dd)
Approved By SH	Approuvé par SH
Date NOV 2018	(yyyy/mm/dd)
Tender ANNE RICHARDS	Soumission

Project Manager Administrateur de projets  
Project no. No. du projet  
**PTS 4845**  
Drawing no. No. du dessin  
**M203**



**DRAWING NOTES**

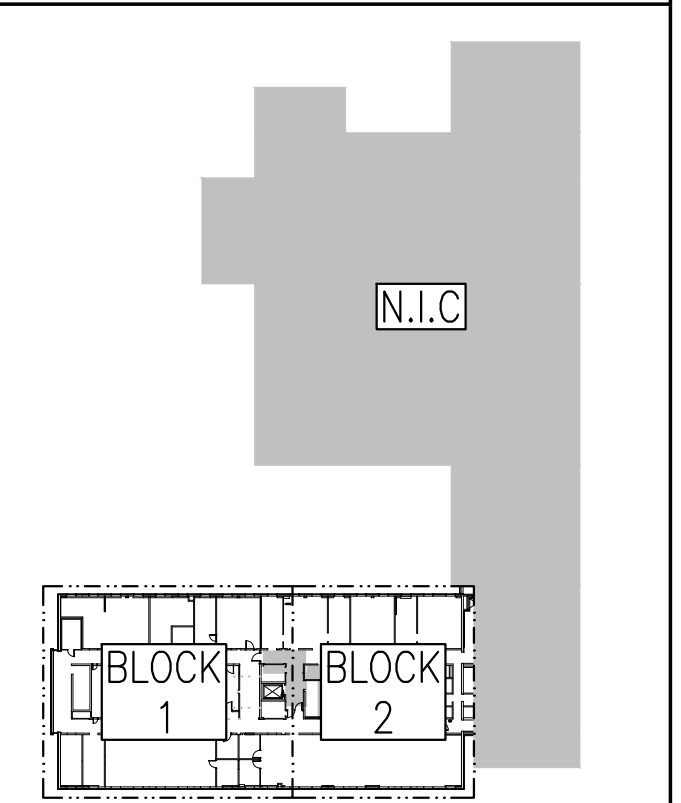
- 1 PROVIDE CONDENSATE PIPING FROM FAN COIL TO SINK. CONNECT TO SINK DRAIN UPSTREAM OF P-TRAP.
- 2 PROVIDE NEW PLUMBING FIXTURES WHERE INDICATED C/W CW, HW, SAN AND VENTING PIPING.
- 3 CAP PIPING WHERE INDICATED.

Government of Canada / Gouvernement du Canada

**Canada**

**PETER J. KINDREE ARCHITECT**  
 79 Hinton Avenue N. Ottawa K1Y 0Z7 (613) 860-1530

**Goodkey Weedmark Consulting Engineers**  
 GOODKEY WEEDMARK & ASSOCIATES LIMITED  
 1888 Woodward Dr. Ottawa Ontario Canada K2C 3R8 GVAL Project #2018-363  
 613 727-5111 Voice 613 727-5115 Fax www.gwecl.com Web



LICENCED PROFESSIONAL ENGINEER  
 S. D. HAMILTON  
 90992770  
 PROVINCE OF ONTARIO

L'ENTREPRENEUR DEVRA VÉRIFIER TOUTES LES DIMENSIONS ET LES CONDITIONS SUR LE CHANTIER ET AVISER SANS DÉLAI LE REPRÉSENTANT DU MINISTÈRE DE TOUTE ANOMALIE.  
 Contractor to verify all dimensions and conditions on site and immediately notify the Departmental Representative of all discrepancies.

revisions	description	date
4	ISSUED FOR TENDER	2019-01-07
3	ISSUED FOR TENDER REVIEW	2018-11-27
2	ISSUED FOR 99% REVIEW	2018-11-02
1	ISSUED FOR 66% REVIEW	2018-10-12

A detail no. no. du detail  
 B location drawing no. sur dessin no.  
 C drawing no. dessin no.

project project

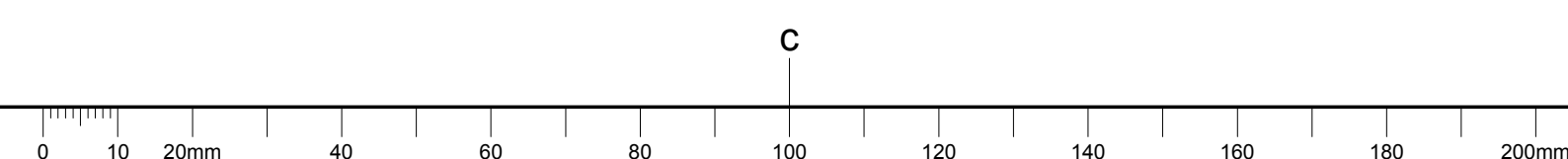
**DID LAB RENOVATIONS**  
 OTTAWA, ONTARIO

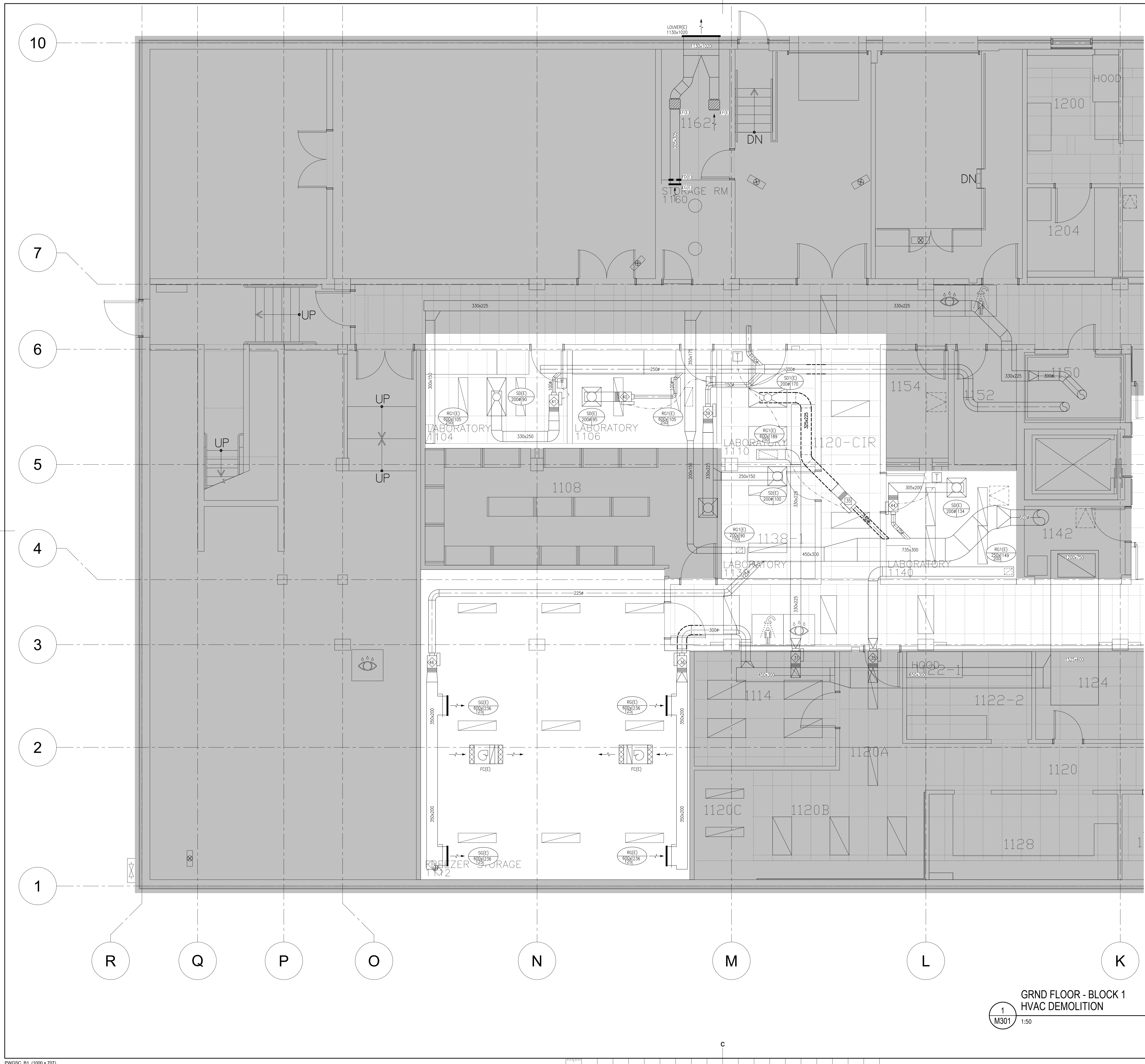
drawing dessin

**MECHANICAL THIRD FLOOR - BLOCK 2 PLUMBING NEW WORK**

Designed By SH	Conçu par
Date NOV 2018	(yyyy/mm/dd)
Drawn By JC	Dessiné par
Date NOV 2018	(yyyy/mm/dd)
Reviewed By SH	Examiné par
Date NOV 2018	(yyyy/mm/dd)
Approved By SH	Approuvé par
Date NOV 2018	(yyyy/mm/dd)
Tender ANNE RICHARDS	Soumission
Project Manager	Administrateur de projets
Project no.	No. du projet
<b>PTS 4845</b>	
Drawing no.	No. du dessin
<b>M204</b>	

**THIRD FLOOR - BLOCK 2 PLUMBING NEW WORK**  
 1 M204 1:50





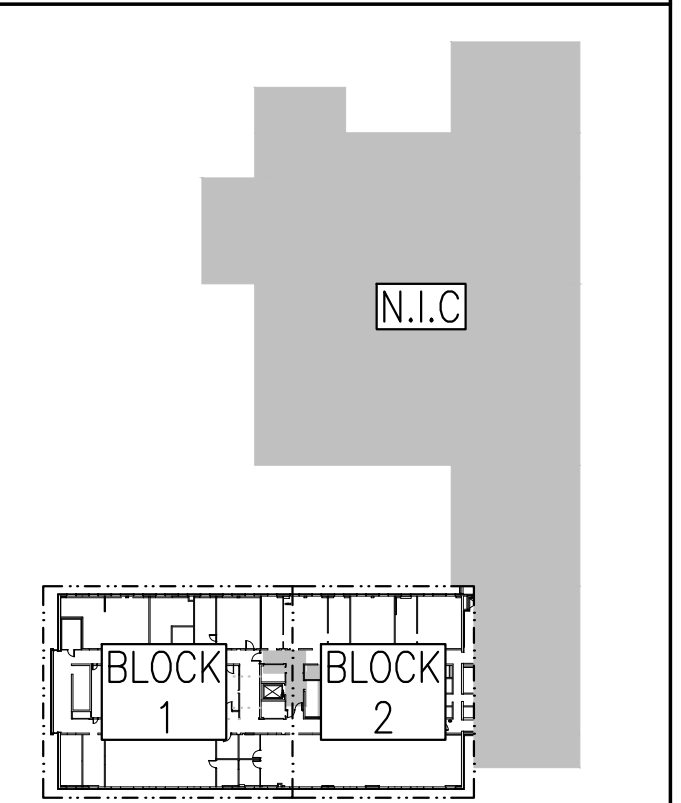
**DRAWING NOTES**  
 ① REMOVE EXISTING DUCTWORK AS INDICATED.

Government of Canada / Gouvernement du Canada

**Canada**

**PETER J. KINDREE ARCHITECT**  
 79 Hinton Avenue N. Ottawa K1Y 0Z7 (613) 860-1530

**Goodkey Weedmark Consulting Engineers**  
 GOODKEY WEEDMARK & ASSOCIATES LIMITED  
 1888 Woodward Dr. Ottawa, Ontario Canada K2C 3R8 G.W.A. Project #2018-363  
 613 727-5111 Voice 613 727-5115 Fax www.gweli.com Web



**KEY PLAN**

LICENSED PROFESSIONAL ENGINEER  
 S. D. HAMILTON 90992770  
 PROVINCE OF ONTARIO

L'ENTREPRENEUR DEVRA VÉRIFIER TOUTES LES DIMENSIONS ET LES CONDITIONS SUR LE CHANTIER ET AVISER SANS DÉLAI LE REPRÉSENTANT DU MINISTÈRE DE TOUTE ANOMALIE.  
 Contractor to verify all dimensions and conditions on site and immediately notify the Departmental Representative of all discrepancies.

revisions	description	date
4	ISSUED FOR TENDER	2019-01-07
3	ISSUED FOR TENDER REVIEW	2018-11-27
2	ISSUED FOR 99% REVIEW	2018-11-02
1	ISSUED FOR 66% REVIEW	2018-10-12

A detail no. du détail  
 B location drawing no. sur dessin no.  
 C drawing no. dessin no.

project projet

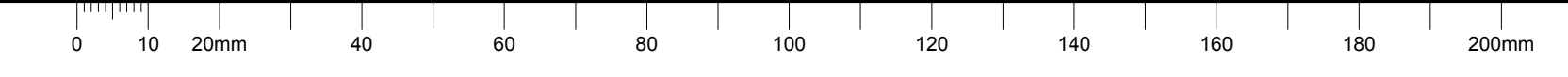
**DID LAB RENOVATIONS**  
 OTTAWA, ONTARIO

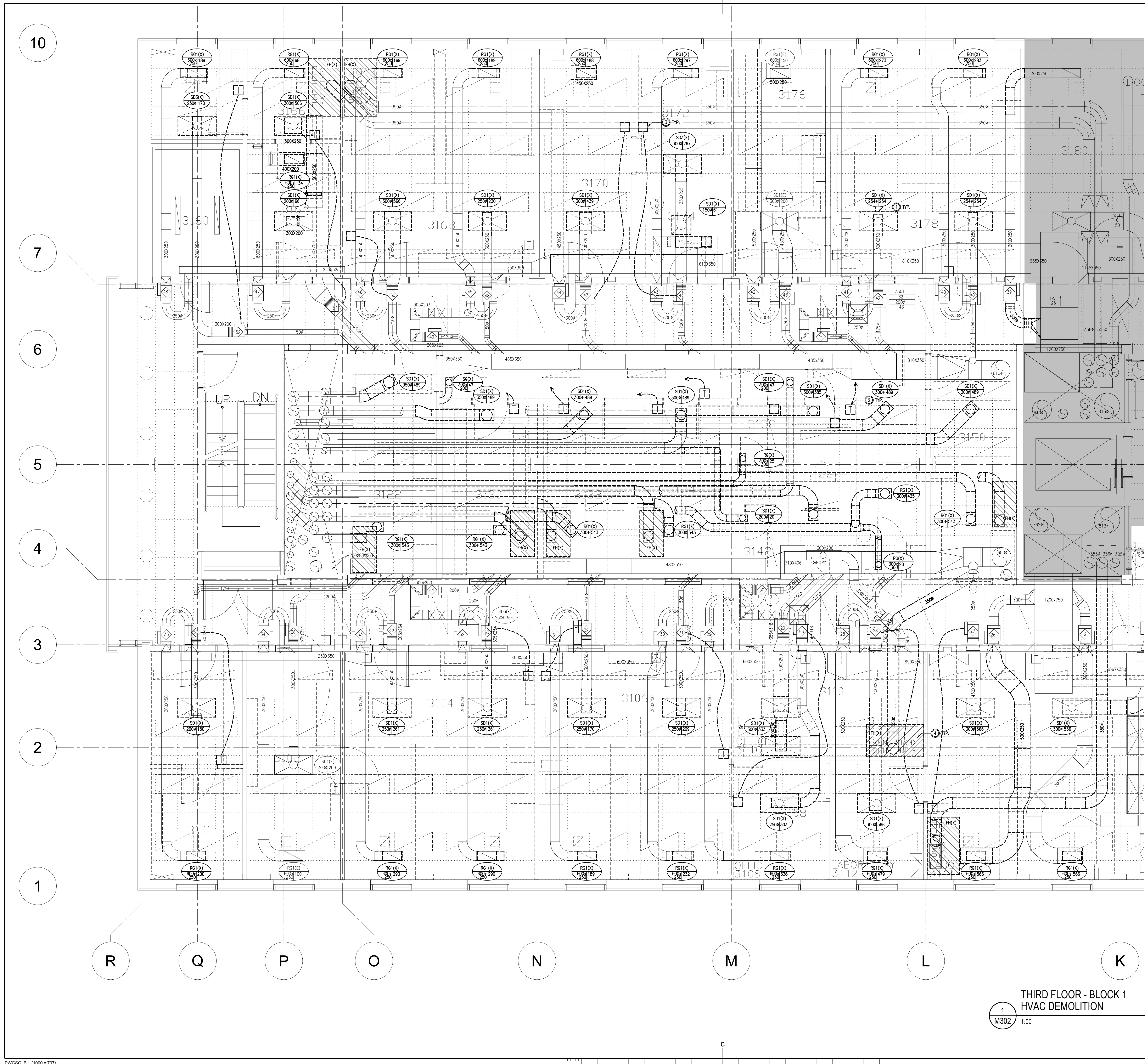
drawing dessin

**MECHANICAL GRND FLOOR - BLOCK 1 HVAC DEMOLITION**

Designed By SH	Conçu par SH
Date NOV 2018	(yyyy/mm/dd)
Drawn By JC	Dessiné par JC
Date NOV 2018	(yyyy/mm/dd)
Reviewed By SH	Examiné par SH
Date NOV 2018	(yyyy/mm/dd)
Approved By SH	Approuvé par SH
Date NOV 2018	(yyyy/mm/dd)
Tender ANNE RICHARDS	Soumission
Project Manager Administrateur de projets	
Project no. No. du projet	<b>PTS 4845</b>
Drawing no. No. du dessin	<b>M301</b>

**GRND FLOOR - BLOCK 1 HVAC DEMOLITION**  
 1 M301 1:50





- DRAWING NOTES**
- REMOVE EXISTING DIFFUSERS & GRILLES C/W ASSOCIATED DUCTWORK AS INDICATED. RETAIN FOR REUSE IN NEW WORK.
  - REMOVE TEMPERATURE SENSORS IN CENTRAL LAB AREA C/W WIRING BACK TO PENTHOUSE MECHANICAL ROOM.
  - REMOVE TEMPERATURE SENSORS C/W ASSOCIATED WIRING AS INDICATED. RETAIN FOR REUSE IN NEW WORK.
  - REMOVE EXISTING FUMEHOODS AS INDICATED.

Government of Canada / Gouvernement du Canada

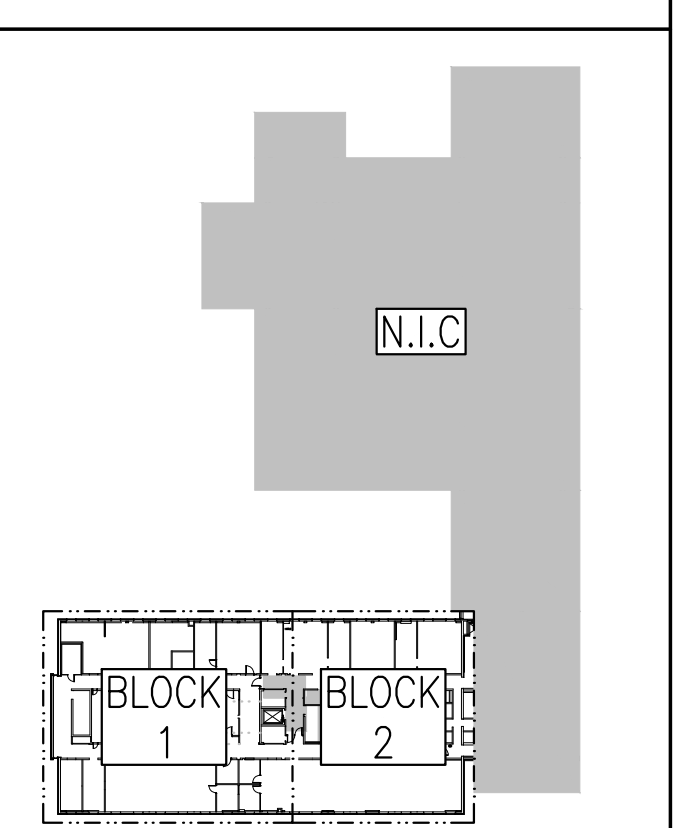
**Canada**

**PETER J. KINDREE ARCHITECT**

79 Hinton Avenue N. Ottawa K1Y 0Z7 (613) 860-1530

**Goodkey Weedmark Consulting Engineers**

GOODKEY WEEDMARK & ASSOCIATES LIMITED  
 1888 Woodward Dr. Ottawa Ontario Canada K2C 3R8 G.W.A. Project #2018-363  
 613 727-5111 Voice 613 727-5115 Fax  
 www.gwe.com Web



LICENSED PROFESSIONAL ENGINEER  
 S. D. HAMILTON  
 90992770  
 PROVINCE OF ONTARIO

L'ENTREPRENEUR DEVRA VÉRIFIER TOUTES LES DIMENSIONS ET LES CONDITIONS SUR LE CHANTIER ET AVISER SANS DÉLAI LE REPRÉSENTANT DU MINISTÈRE DE TOUTE ANOMALIE.

Contractor to verify all dimensions and conditions on site and immediately notify the Departmental Representative of all discrepancies.

revisions	description	date
4	ISSUED FOR TENDER	2018-01-07
3	ISSUED FOR TENDER REVIEW	2018-11-27
2	ISSUED FOR 99% REVIEW	2018-11-02
1	ISSUED FOR 66% REVIEW	2018-10-12

project: **DID LAB RENOVATIONS**

OTTAWA, ONTARIO

drawing: **MECHANICAL THIRD FLOOR - BLOCK 1 HVAC DEMOLITION**

Designed By: SH / Conçu par: SH  
 Date: NOV 2018 / (yyyy/mm/dd)

Drawn By: JC / Dessiné par: JC  
 Date: NOV 2018 / (yyyy/mm/dd)

Reviewed By: SH / Examiné par: SH  
 Date: NOV 2018 / (yyyy/mm/dd)

Approved By: SH / Approuvé par: SH  
 Date: NOV 2018 / (yyyy/mm/dd)

Tender: ANNE RICHARDS / Soumission

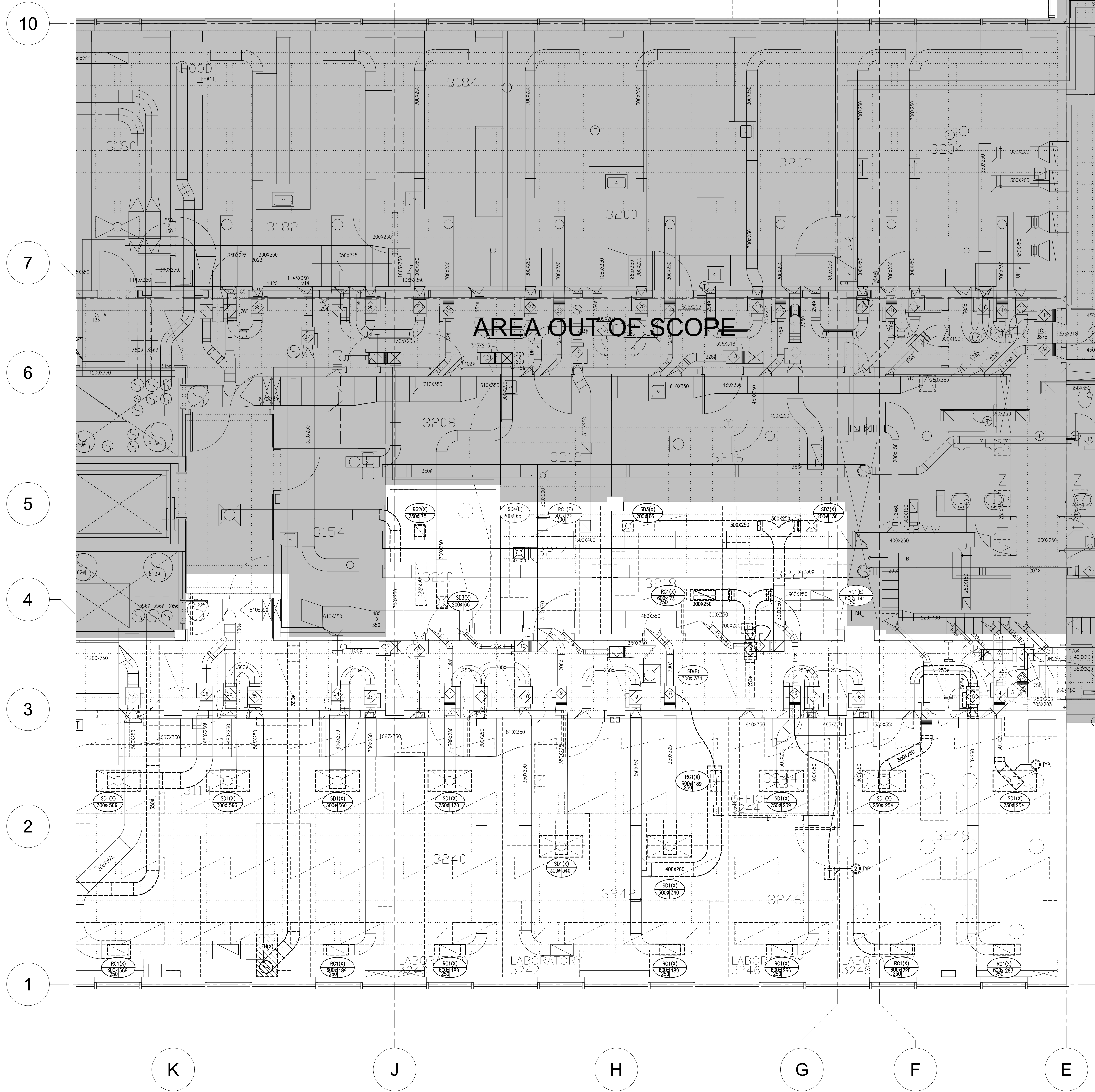
Project Manager: ANNE RICHARDS / Administrateur de projets  
 Project no.: PTS 4845 / No. du projet

Drawing no.: M302 / No. du dessin

**THIRD FLOOR - BLOCK 1 HVAC DEMOLITION**

1 M302 1:50





**DRAWING NOTES**

- REMOVE EXISTING DIFFUSERS & GRILLES C/W ASSOCIATED DUCTWORK AS INDICATED. RETAIN FOR REUSE IN NEW WORK.
- REMOVE TEMPERATURE SENSORS C/W ASSOCIATED WIRING AS INDICATED. RETAIN FOR REUSE IN NEW WORK.

Government of Canada / Gouvernement du Canada

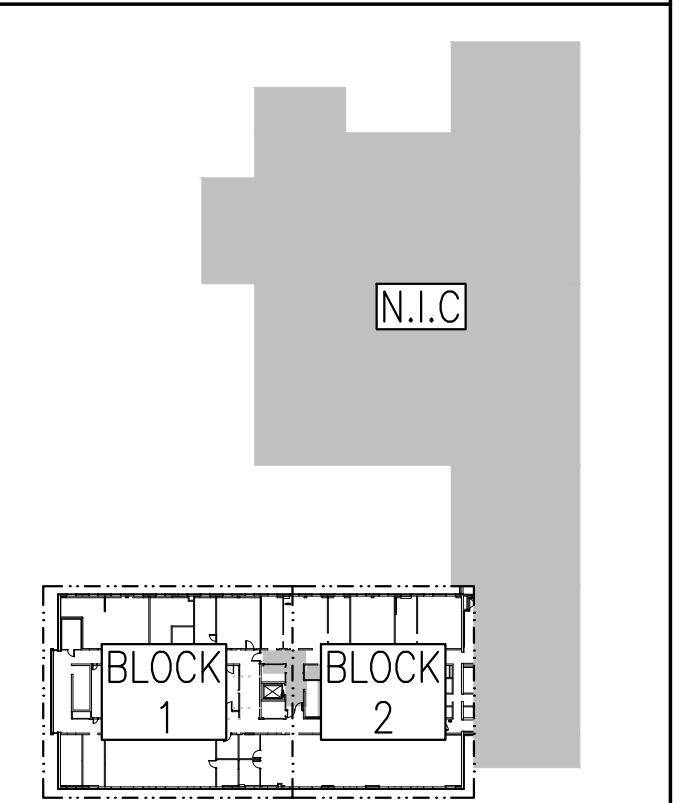
**Canada**

**PETER J. KINDREE ARCHITECT**

79 Hinton Avenue N. Ottawa K1Y 0Z7 (613) 860-1530

**Goodkey Weedmark Consulting Engineers**

GOODKEY WEEDMARK & ASSOCIATES LIMITED  
 1888 Woodward Dr. Ottawa, Ontario Canada K2C 3R8 G.W.A. Project #2018-363  
 613 727-5111 613 727-5115 www.gwec.com



L'ENTREPRENEUR DEVRA VÉRIFIER TOUTES LES DIMENSIONS ET LES CONDITIONS SUR LE CHANTIER ET AVISER SANS DÉLAI LE REPRÉSENTANT DU MINISTÈRE DE TOUTE ANOMALIE.

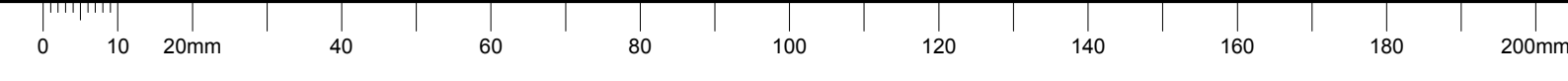
Contractor to verify all dimensions and conditions on site and immediately notify the Departmental Representative of all discrepancies.

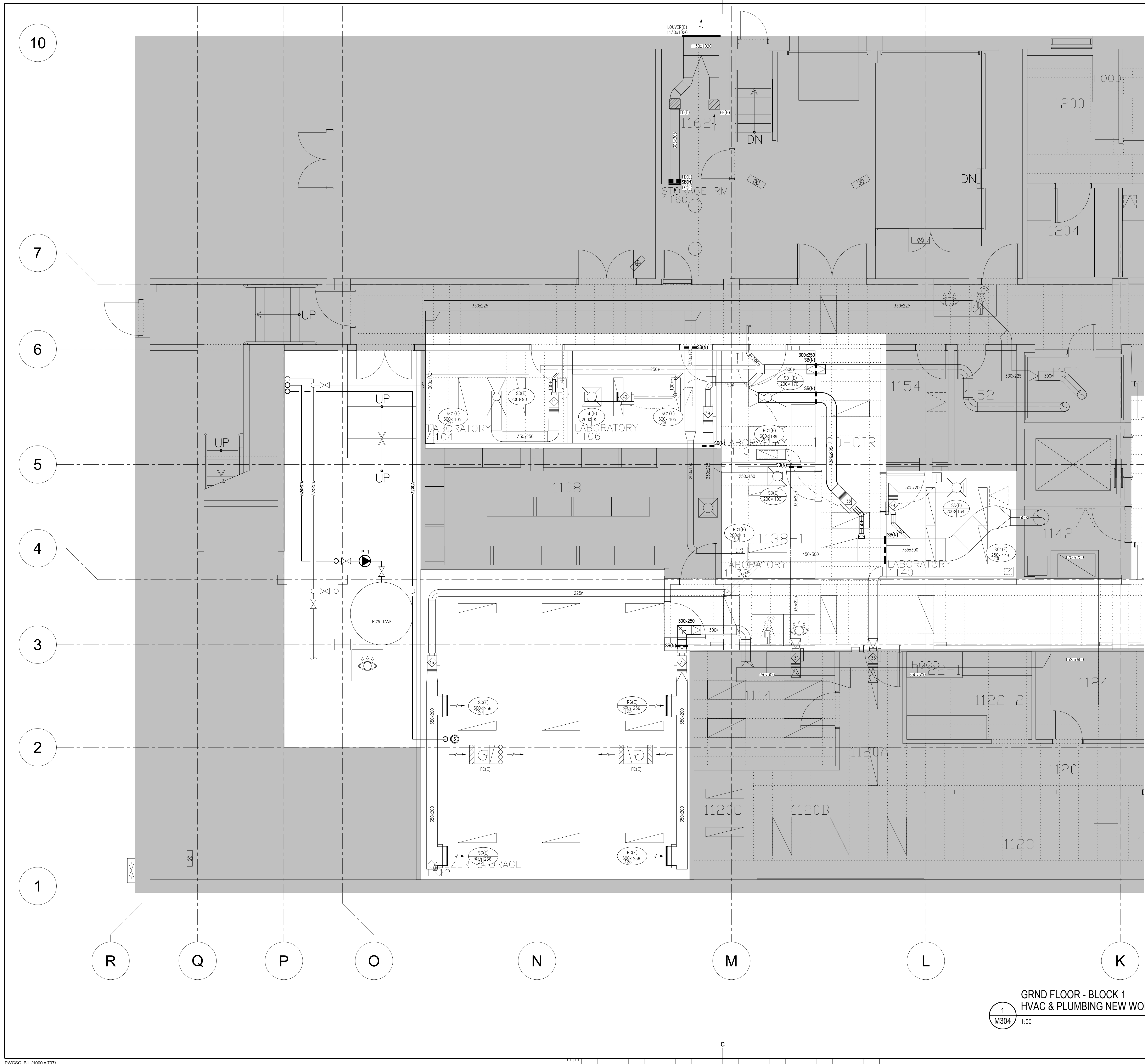
revisions	description	date
4	ISSUED FOR TENDER	2019-01-07
3	ISSUED FOR TENDER REVIEW	2018-11-27
2	ISSUED FOR 99% REVIEW	2018-11-02
1	ISSUED FOR 66% REVIEW	2018-10-12

project		project	
<b>DID LAB RENOVATIONS</b>			
OTTAWA, ONTARIO			
drawing		dessin	
<b>MECHANICAL THIRD FLOOR - BLOCK 2 HVAC DEMOLITION</b>			
Designed By	SH	Conçu par	
Date	NOV 2018	(yyyy/mm/dd)	
Drawn By	JC	Dessiné par	
Date	NOV 2018	(yyyy/mm/dd)	
Reviewed By	SH	Examiné par	
Date	NOV 2018	(yyyy/mm/dd)	
Approved By	SH	Approuvé par	
Date	NOV 2018	(yyyy/mm/dd)	
Tender	ANNE RICHARDS	Soumission	
Project Manager		Administrateur de projets	
Project no.		No. du projet	
<b>PTS 4845</b>			
Drawing no.		No. du dessin	
<b>M303</b>			

**THIRD FLOOR - BLOCK 2 HVAC DEMOLITION**

1 M303 1:50





**DRAWING NOTES**

- 1 PROVIDE SECURITY BARS IN EXISTING DUCTWORK. REFER TO DETAIL 2/M306 & 3/M306.
- 2 PROVIDE NEW DUCTWORK AS INDICATED.
- 3 PROVIDE AIR COMPRESSOR & ALLOW FOR CONNECTION OF NEW PIPING.

Government of Canada / Gouvernement du Canada

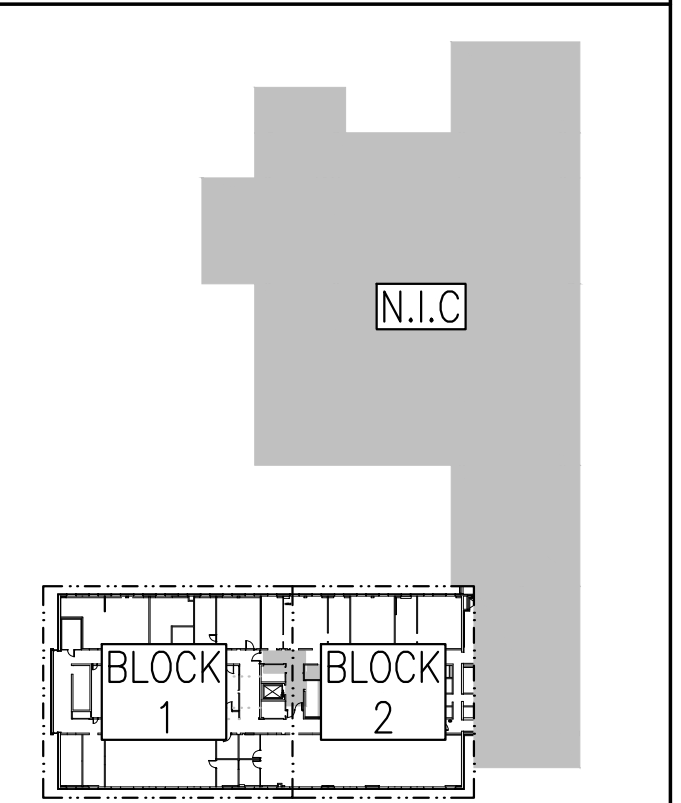
**Canada**

**PETER J. KINDREE ARCHITECT**

79 Hinton Avenue N.  
Ottawa K1Y 0Z7 (613) 860-1530

**Goodkey Weedmark Consulting Engineers**

GOODKEY WEEDMARK & ASSOCIATES LIMITED  
1888 Woodward Dr. Ottawa, Ontario Canada K2C 3R8  
613 727-5111 Voice 613 727-5115 Fax 613 727-5115 Web  
GWA Project #2018-363



**KEY PLAN**

LICENSED PROFESSIONAL ENGINEER  
S. D. HAMILTON  
9092770  
PROVINCE OF ONTARIO

L'ENTREPRENEUR DEVRA VÉRIFIER TOUTES LES DIMENSIONS ET LES CONDITIONS SUR LE CHANTIER ET AVISER SANS DÉLAI LE REPRÉSENTANT DU MINISTÈRE DE TOUTE ANOMALIE.

Contractor to verify all dimensions and conditions on site and immediately notify the Departmental Representative of all discrepancies.

revisions	description	date
4	ISSUED FOR TENDER	2019-01-07
3	ISSUED FOR TENDER REVIEW	2018-11-27
2	ISSUED FOR 99% REVIEW	2018-11-02
1	ISSUED FOR 66% REVIEW	2018-10-12

A detail no. no. du detail  
B location drawing no. sur dessin no.  
C drawing no. dessin no.

project / projet

**DID LAB RENOVATIONS**

OTTAWA, ONTARIO

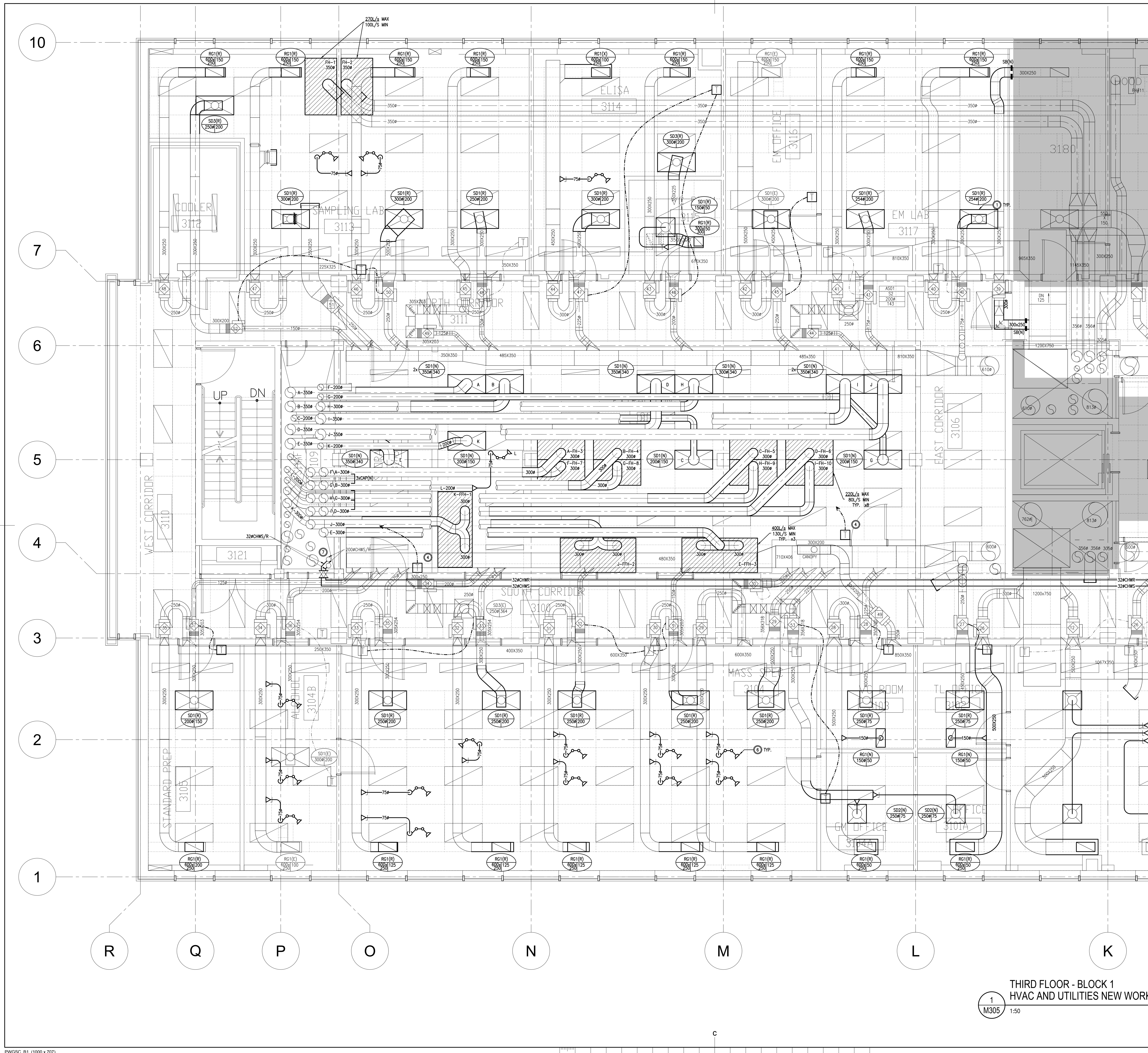
drawing / dessin

**MECHANICAL GRND FLOOR - BLOCK 1 HVAC & PLUMBING NEW WORK**

Designed By / Conçu par	SH
Date / (yyyy/mm/dd)	NOV 2018
Drawn By / Dessiné par	JC
Date / (yyyy/mm/dd)	NOV 2018
Reviewed By / Examiné par	SH
Date / (yyyy/mm/dd)	NOV 2018
Approved By / Approuvé par	SH
Date / (yyyy/mm/dd)	NOV 2018
Tender / Soumission	ANNE RICHARDS
Project Manager / Administrateur de projets	
Project no. / No. du projet	PTS 4845
Drawing no. / No. du dessin	M304

**GRND FLOOR - BLOCK 1 HVAC & PLUMBING NEW WORK**

1 M304 1:50



- DRAWING NOTES**
- REINSTALL EXISTING DIFFUSERS & GRILLES RETAINED FROM DEMOLITION. EXTEND EXISTING DUCTWORK AS INDICATED.
  - PROVIDE NEW LAMINAR DIFFUSERS. EXTEND DUCTWORK AS INDICATED.
  - PROVIDE NEW FUMEHOODS. EXTEND DUCTWORK AS INDICATED.
  - PROVIDE NEW TEMPERATURE SENSORS AS INDICATED C/W WIRING TO CONTROLLERS IN PENTHOUSE MECHANICAL ROOM. UPDATE GRAPHICS ACCORDINGLY.
  - INSTALL TEMPERATURE SENSOR RETAINED FROM DEMOLITION. MODIFY WIRING AS INDICATED. UPDATE GRAPHICS ACCORDINGLY.
  - PROVIDE NEW EXTRACTOR ARMS C/W ASSOCIATED DUCTWORK. BALANCE TO 50L/S EACH.
  - PROVIDE NEW CONNECTIONS TO EXISTING CHWS/R RISERS C/W ISOLATION VALVES. CONNECTIONS TO BE MADE USING HOT TAPS. ALLOW FOR REMOVAL & RE-INSTALLATION OF TWO EXHAUST AIR DUCTS TO ACCESS RISERS.

Government of Canada / Gouvernement du Canada

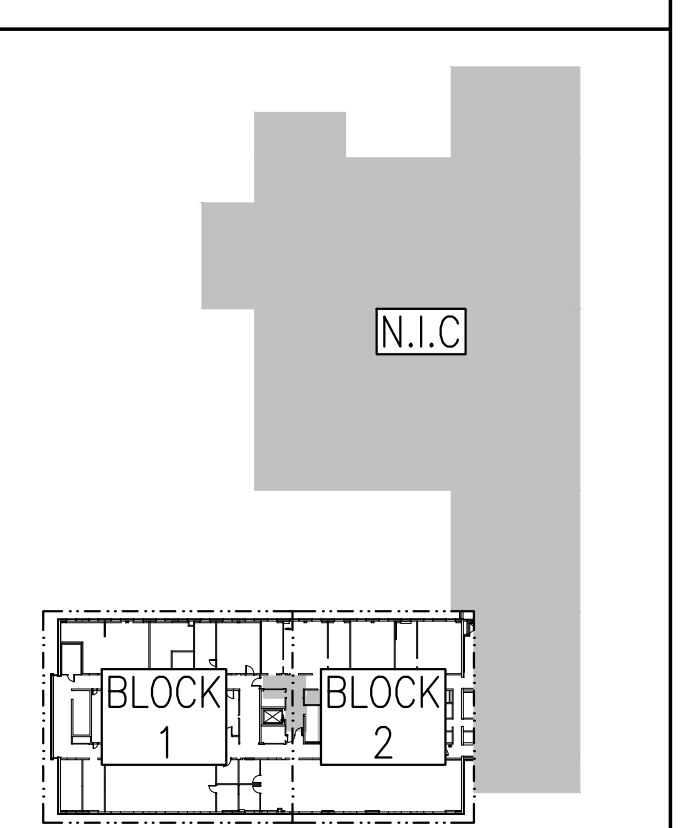
**Canada**

**PETER J. KINDREE ARCHITECT**

79 Hinton Avenue N. Ottawa K1Y 0Z7 (613) 860-1530

**Goodkey Weedmark Consulting Engineers**

GOODKEY WEEDMARK & ASSOCIATES LIMITED  
 1888 Woodward Dr. Ottawa Ontario Canada K2C 3R8 G.W.A. Project #2018-363  
 613 727-5111 Voice 613 727-5115 Fax www.gw.com Web



**KEY PLAN**

PROFESSIONAL ENGINEER  
 S. D. HAMILTON  
 90992770  
 PROVINCE OF ONTARIO

L'ENTREPRENEUR DEVRA VÉRIFIER TOUTES LES DIMENSIONS ET LES CONDITIONS SUR LE CHANTIER ET AVISER SANS DÉLAI LE REPRÉSENTANT DU MINISTÈRE DE TOUTE ANOMALIE.

Contractor to verify all dimensions and conditions on site and immediately notify the Departmental Representative of all discrepancies.

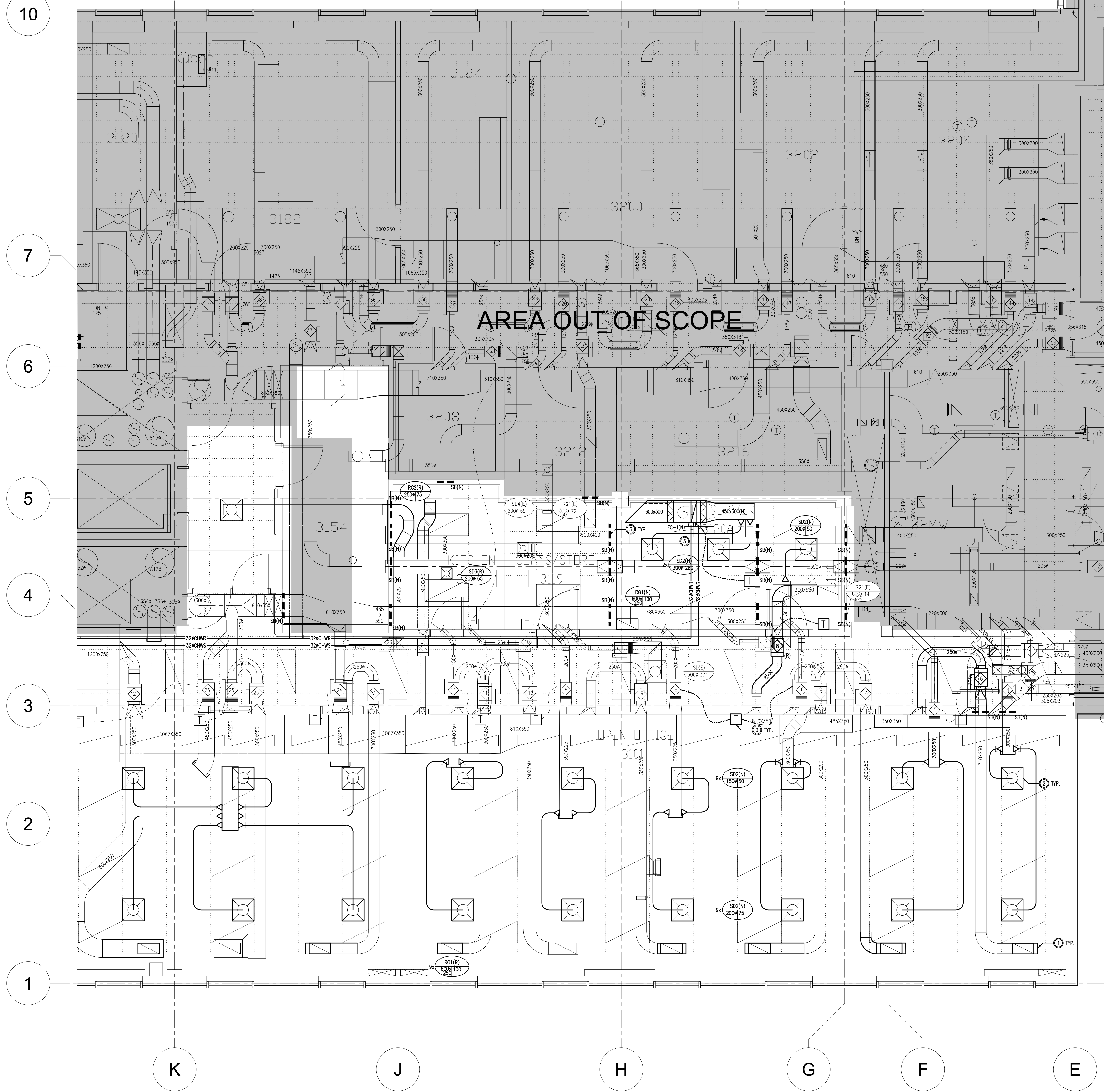
revisions	description	date
4	ISSUED FOR TENDER	2019-01-07
3	ISSUED FOR TENDER REVIEW	2018-11-27
2	ISSUED FOR 99% REVIEW	2018-11-02
1	ISSUED FOR 66% REVIEW	2018-10-12

project		project	
<b>DID LAB RENOVATIONS</b>			
OTTAWA, ONTARIO			
drawing		dessin	
<b>MECHANICAL THIRD FLOOR - BLOCK 1 HVAC AND UTILITIES NEW WORK</b>			
Designed By	SH	Conçu par	SH
Date	NOV 2018	(yyyy/mm/dd)	
Drawn By	JC	Dessiné par	JC
Date	NOV 2018	(yyyy/mm/dd)	
Reviewed By	SH	Examiné par	SH
Date	NOV 2018	(yyyy/mm/dd)	
Approved By	SH	Approuvé par	SH
Date	NOV 2018	(yyyy/mm/dd)	
Tender	ANNE RICHARDS	Submission	
Project Manager	Administrateur de projets		
Project no.	No. du projet		
<b>PTS 4845</b>			
Drawing no.	No. du dessin		
<b>M305</b>			

**THIRD FLOOR - BLOCK 1 HVAC AND UTILITIES NEW WORK**

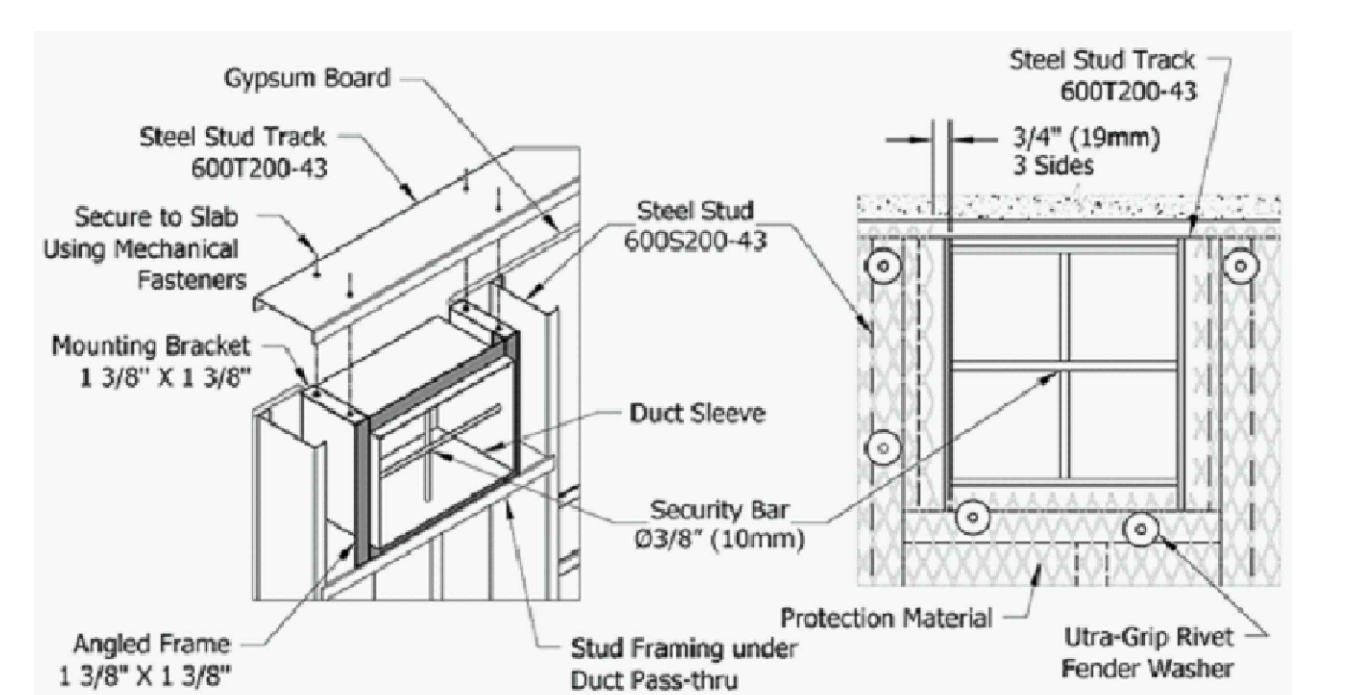
1 M305

1:50

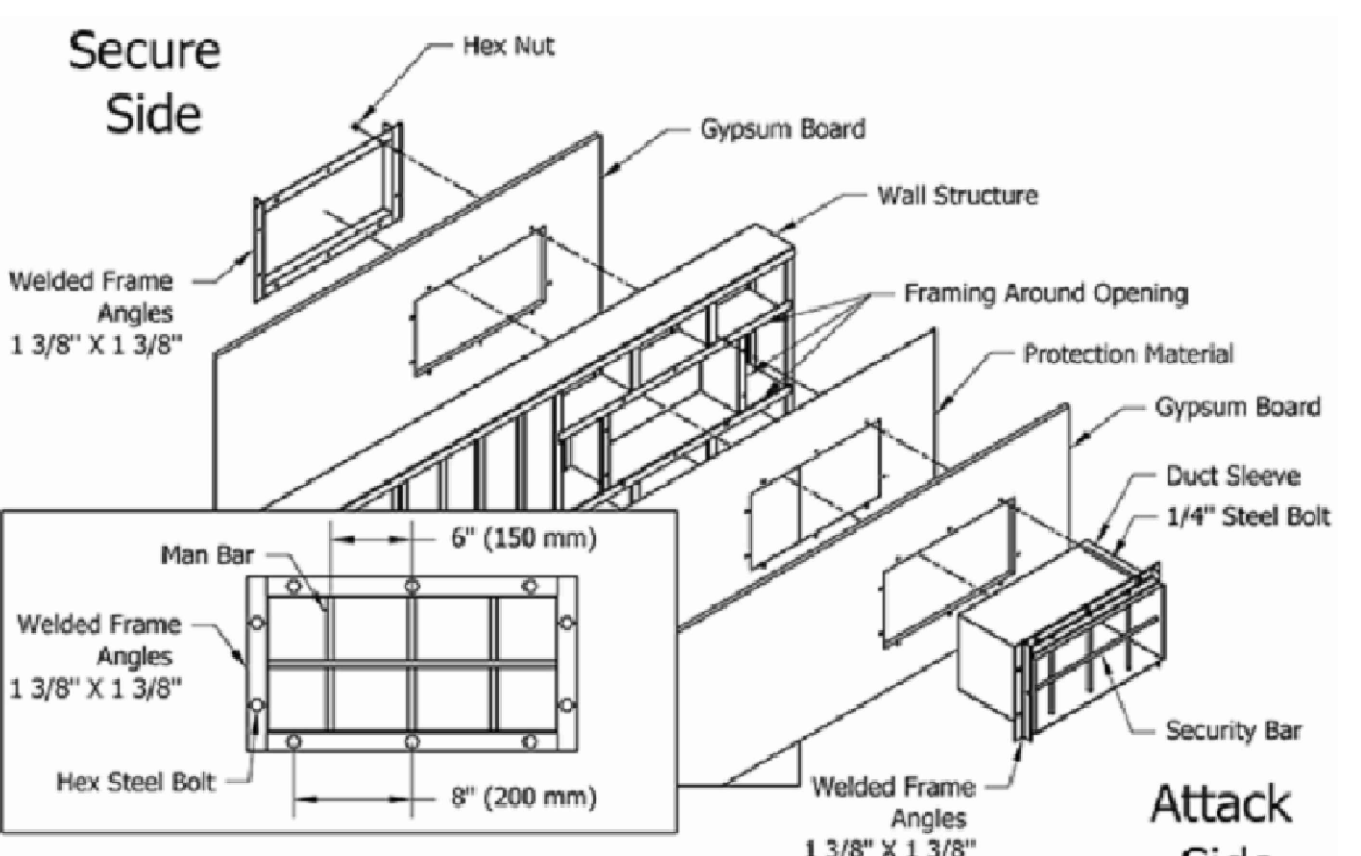


1  
M306 1:50  
THIRD FLOOR - BLOCK 2  
HVAC AND UTILITIES NEW WORK

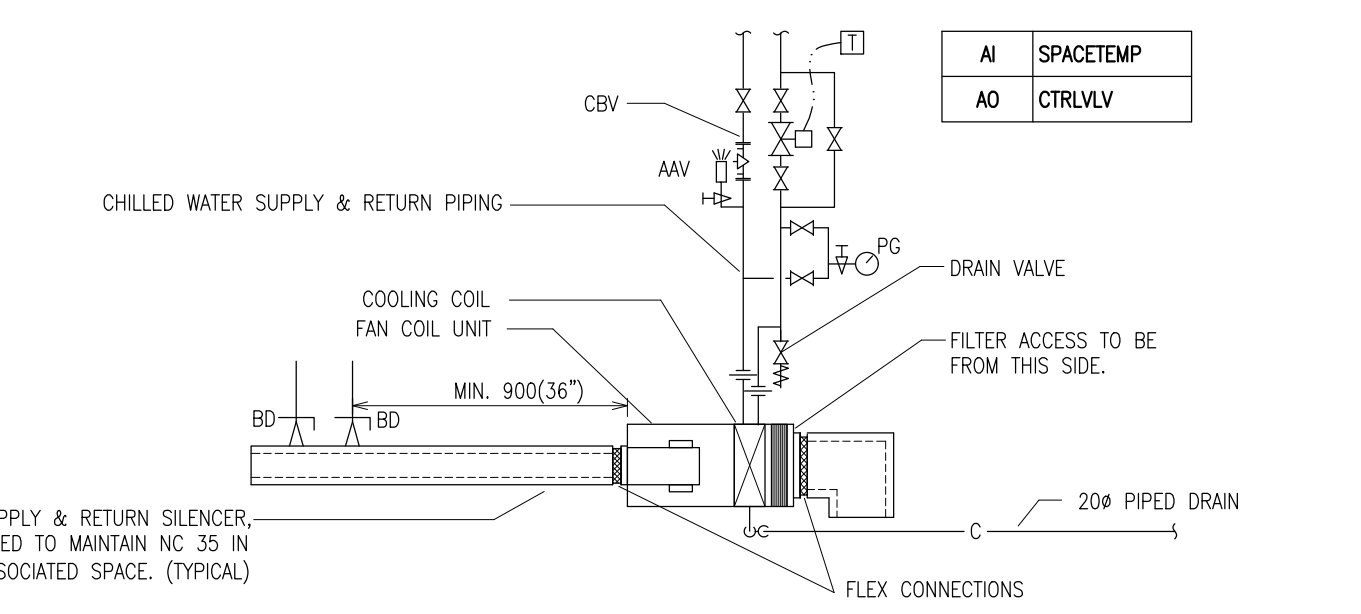
- DRAWING NOTES**
- REINSTALL GRILLES RETAINED FROM DEMOLITION. EXTEND EXISTING DUCTWORK AS INDICATED.
  - PROVIDE NEW SUPPLY DIFFUSERS. EXTEND EXISTING DUCTWORK AS INDICATED.
  - INSTALL TEMPERATURE SENSOR RETAINED FROM DEMOLITION. MODIFY WIRING AS INDICATED. UPDATE GRAPHICS ACCORDINGLY.
  - PROVIDE SECURITY BARS IN EXISTING DUCTWORK. REFER TO DETAIL 2/M306 & 3/M306.
  - PROVIDE CHILLED WATER PIPING FROM NEW FAN COIL TO EXISTING RISERS IN SHAFT.



2  
M306 N.T.S.  
CEILING MOUNT DUCT  
SECURITY BAR CONNECTION (SB)



3  
M306 N.T.S.  
SURFACE MOUNT DUCT  
SECURITY BAR CONNECTION (SB)



4  
M306 N.T.S.  
TYPICAL HORIZONTAL FAN COIL UNIT DETAIL

Government of Canada / Gouvernement du Canada

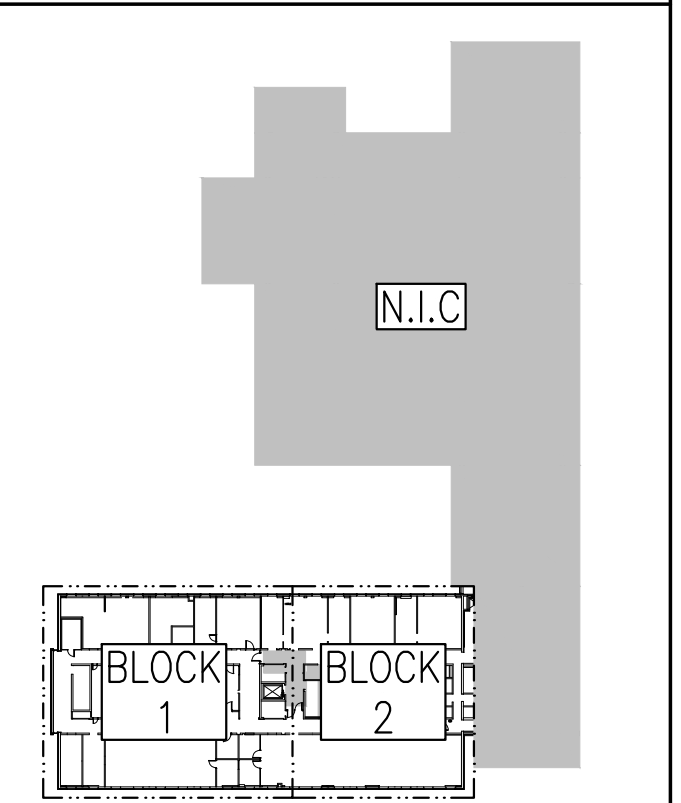
**Canada**

**PETER J. KINDREE ARCHITECT**

79 Hinton Avenue N.  
Ottawa K1Y 0Z7 (613) 860-1530

**Goodkey Weedmark Consulting Engineers**

GOODKEY WEEDMARK & ASSOCIATES LIMITED  
1888 Woodward Dr. Ottawa, Ontario K2C 3R8  
613 727-5111 613 727-5115  
www.gwi.com



**LICENSED PROFESSIONAL ENGINEER**  
S. D. HAMILTON  
9092770  
PROVINCE OF ONTARIO

L'ENTREPRENEUR DEVRA VÉRIFIER TOUTES LES DIMENSIONS ET LES CONDITIONS SUR LE CHANTIER ET AVISER SANS DÉLAI LE REPRÉSENTANT DU MINISTÈRE DE TOUTE ANOMALIE.

Contractor to verify all dimensions and conditions on site and immediately notify the Departmental Representative of all discrepancies.

revisions	description	date
4	ISSUED FOR TENDER	2019-01-07
3	ISSUED FOR TENDER REVIEW	2018-11-27
2	ISSUED FOR 99% REVIEW	2018-11-02
1	ISSUED FOR 66% REVIEW	2018-10-12

A detail no. no. du detail  
B location drawing no. sur dessin no.  
C drawing no. dessin no.

project project

**DID LAB RENOVATIONS**

OTTAWA, ONTARIO

**MECHANICAL THIRD FLOOR - BLOCK 2 HVAC AND UTILITIES NEW WORK**

Designed By SH NOV 2018	Conçu par (yyyy/mm/dd)
Drawn By JC NOV 2018	Dessiné par (yyyy/mm/dd)
Reviewed By SH NOV 2018	Examiné par (yyyy/mm/dd)
Approved By SH NOV 2018	Approuvé par (yyyy/mm/dd)
Tender ANNE RICHARDS	Soumission
Project Manager Administrateur de projets	No. du projet
<b>PTS 4845</b>	
Drawing no. M306	No. du dessin