



FIRE PROTECTION LEGEND

DRAWING SYMBOLS:

FIRE DEPARTMENT CONNECTION
 FIRE EXTINGUISHER (WALL HUNG W/ BRACKET)

ABBREVIATIONS:

FDC FIRE DEPARTMENT CONNECTION
 TS TAMPER SWITCH

PLUMBING LEGEND

DRAWING SYMBOLS:

HOSE BIBB
 FLOOR DRAIN
 P-TRAP
 CLEANOUT TO GRADE
 CLEANOUT
 COLD WATER (C)
 HOT WATER (H)
 HOT WATER RECIRCULATION (R)
 SANITARY PIPING ABOVE FLOOR
 STORM PIPING ABOVE FLOOR
 PERIMETER DRAIN
 PLUMBING VENT
 VENT TO ROOF

ABBREVIATIONS:

C COLD WATER
 CO CLEANOUT
 FD FLOOR DRAIN
 H HOT WATER
 HB HOSE BIBB
 INV. INVERT
 S SINK
 LB LAVATORY BASIN
 R HOT WATER RECIRCULATION
 SAN SANITARY PIPING
 SH SHOWER
 SS JANITOR SINK
 VTR VENT TO ROOF
 WC WATER CLOSET

HVAC LEGEND

DRAWING SYMBOLS:

RECTANGULAR DUCT, SIDE FACINGxDEPTH
 ROUND DUCT
 DUCT TO BE REMOVED
 BRANCH DUCT, SIZE AS NOTED
 BRANCH DUCT TO BE REMOVED, SIZE AS NOTED
 SUPPLY AIR DUCT, TOWARD, AWAY
 RETURN AIR, TOWARD, AWAY
 EXHAUST AIR, TOWARD, AWAY
 OUTDOOR AIR, TOWARD, AWAY
 ROUND DUCT, TOWARD, AWAY
 DUCT END CAP
 DUCT FLEXIBLE CONNECTION
 25 THICK ACOUSTIC DUCT INSULATION
 ROUND DUCT TAKEOFF TO ROUND, SIDE
 SQUARE DUCT TAKEOFF TO ROUND, SIDE
 SQUARE DUCT TAKEOFF TO SQUARE, SIDE
 BALANCE DAMPER

ABBREVIATIONS:

AHU AIR HANDLING UNIT
 BD BALANCE DAMPER
 CD CONTROL DAMPER
 DSS DOWNSPOUT SHOE
 E/A EXHAUST AIR
 EF EXHAUST FAN
 EG EXHAUST GRILLE
 ER EXHAUST REGISTER
 FD FIRE/SMOKE DAMPER
 HP HEAT PUMP
 L/s LITRES PER SECOND
 O/A OUTDOOR AIR
 R/A RETURN AIR
 RG RETURN GRILLE
 S/A SUPPLY AIR
 SD SUPPLY DIFFUSER

DRAWING SYMBOLS:

SUPPLY DIFFUSER
 RETURN GRILLE
 EXHAUST GRILLE
 SIDEWALL GRILLE
 BASEBOARD HEATER
 DOOR UNDERCUT
 FIRE/SMOKE DAMPER
 CONTROL DAMPER
 HEATING COIL
 THERMOSTAT
 UNIT HEATER

RS REFRIGERANT SUCTION
 RL REFRIGERANT GAS
 FLOW DIRECTION
 CONTROL WIRING
 DUCT BREAK

ABBREVIATIONS:

DIFFUSER TAG TYPE
 AIRFLOW (L/s)
 NECK/GRILLE SIZE (mm)
 EQUIPMENT TAG TYPE OF EQUIPMENT EQUIPMENT NUMBER

MECHANICAL DRAWING LIST

DRAWING NO.	DRAWING NAME	SCALE
M0.01	DRAWING LIST AND LEGEND	N/A
M0.02	SCHEDULES	N/A
M1.01	PLUMBING - UNDERFLOOR, LEVEL 1 AND LEVEL 2 PLANS	1:100
M2.01	MECHANICAL - LEVEL 1 AND LEVEL 2 PLANS	1:100
M2.01	FIRE PROTECTION - LEVEL 1 AND LEVEL 2 PLANS	1:100

GENERAL SYMBOLS:

PIPE CONNECTION
 PIPE TEE DOWN
 PIPE OFFSET UP
 PIPE OFFSET DOWN
 PIPE CAP
 PIPE CONTINUES
 PRESSURE GAUGE W/ COCK
 THERMOMETER
 DRAWING NOTE

GENERAL ABBREVIATIONS:

AP ACCESS PANEL
 AFF ABOVE FINISHED FLOOR
 NTS NOT TO SCALE

Revision/Revision	Description/Description	Date/Date
5.	Issued for Tender	2018-12-14
4.	100% Review	2018-10-31
3.	95% Review	2018-10-01
2.	90% Review	2018-08-17
1.	60% Review	2018-07-27

Client/client

**FISHERIES AND OCEANS,
REAL PROPERTY,
SAFETY AND SECURITY**

**VANCOUVER, BC
200-401 BURRARD ST.**

Project title/Titre du projet

VICTORIA SAR STATION

25 Huron Street, Victoria, B.C.

Consultant Signature Box Only

Designed by/Concept par
PDT

Drawn by/Dessiné par
HCP/DMM

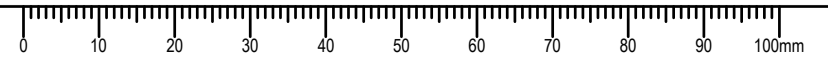
PWGSC Project Manager/Administrateur de Projets TPSGC
--

PWGSC, Regional Manager, Architectural and Engineering Services/
Gestionnaire régionale, Services d'architecture et de génie, TPSGC
--

Drawing title/Titre du dessin

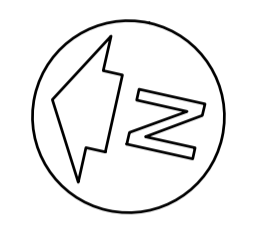
**DRAWING LIST
& LEGEND**

Project No./No. du projet	Sheet/ Feuille	Revision no./ La Révision no.
2017567	M0.01	





WSP PROJ # -181-06966-00



VRF CONDENSING UNIT AND HEAT PUMP SCHEDULE											
TAG	SERVICE	HEATING		COOLING		UNIT			NOTES		
		kw / MBH	l/s / cfm	SENSIBLE kw / MBH	l/s / cfm	TYPE	AIR FLOW L/s / cfm	POWER		VOLTS	PHASE
HP-1	OUTDOOR CONDENSING UNIT	38.1 / 130		31.4 / 107		VRF HEAT RECOVERY	- / -	43 MCA	208	3	1, 2, 3, 4
HP-101	RM 101 HEAT/COOL	2.5 / 8.7		2.1 / 7.2		ROUND CEILING CASSETTE	265 / 565	0.18 A	208	1	1, 2, 3, 4
HP-106	RM 106 HEAT/COOL	3.6 / 12.3		3.5 / 12		ROUND CEILING CASSETTE	265 / 565	0.18 A	208	1	1, 2, 3, 4
HP-107	RM 107 HEAT/COOL	0.7 / 2.5		0.5 / 1.8		SQUARE CEILING CASSETTE	120 / 250	0.17 A	208	1	1, 2, 3, 4
HP-112	RMS 109/110/112 HEAT/COOL	2.5 / 8.4		2.5 / 8.4		FAN COIL	165 / 353	0.26 A	208	1	1, 2, 3, 4
HP-126b	RM 126b COOL	- / -		3.5 / 12		WALL	150 / 314	0.24 A	208	1	1, 2, 3, 4
HP-201	ROOM 201 HEAT/COOL	2.9 / 9.8		0.2 / 0.6		ROUND CEILING CASSETTE	265 / 565	0.18 A	208	1	1, 2, 3, 4
HP-202	ROOM 202 HEAT/COOL	2.9 / 9.8		0.2 / 0.6		ROUND CEILING CASSETTE	265 / 565	0.18 A	208	1	1, 2, 3, 4
HP-207	ROOM 207 HEAT/COOL	0.8 / 2.9		0.7 / 2.4		1-WAY CEILING CASSETTE	100 / 211	0.23 A	208	1	1, 2, 3, 4
HP-208	ROOM 208 HEAT/COOL	0.8 / 2.9		0.7 / 2.4		1-WAY CEILING CASSETTE	100 / 211	0.23 A	208	1	1, 2, 3, 4
HP-209	ROOM 209 HEAT/COOL	0.8 / 2.9		0.7 / 2.4		1-WAY CEILING CASSETTE	100 / 211	0.23 A	208	1	1, 2, 3, 4
HP-210	ROOM 210 HEAT/COOL	0.8 / 2.9		0.7 / 2.4		SQUARE CEILING CASSETTE	120 / 250	0.17 A	208	1	1, 2, 3, 4
HP-211	ROOM 211 HEAT/COOL	0.8 / 2.9		0.7 / 2.4		1-WAY CEILING CASSETTE	100 / 211	0.23 A	208	1	1, 2, 3, 4
HP-212	ROOM 212 HEAT/COOL	0.8 / 2.9		0.7 / 2.4		1-WAY CEILING CASSETTE	100 / 211	0.23 A	208	1	1, 2, 3, 4

NOTE:
 1. SPLIT HEAT PUMP UNIT WITH DOUBLE CIRCUITED COIL SUITABLE FOR LOW AMBIENT OPERATION -8.3°C [17°F].
 2. HEATING SHALL BE RATED AT:
 OAT: 8.3°C [47°F] DB
 EAT: 24.4/16.7°C [76/62°F] DB/WB.
 3. COOLING SHALL BE RATED AT:
 OAT: 30°C [85°F] DB/WB.
 EAT: 24.4/16.7°C [76/62°F] DB/WB.
 4. R-410A REFRIGERANT (HCFC REFRIGERANTS SHALL NOT BE USED).

PUMP SCHEDULE												
TAG	SERVICE	PUMP TYPE	FLOW l/min / gpm	FLUID	FLUID TEMP. °C / °F	DIFF. PRESS kPa / feet	PUMP SPEED rpm	PUMP EFF.	MOTOR SIZE HP	ELECT DATA		NOTES
										VOLTS	PHASE	
P-DHW	DHW RECIRCULATION	INLINE	30 / 8	DOMESTIC WATER	60.0 / 140	45 / 15	1800	-	1/6	120	1	1

NOTE:
 1. REFER TO SPECIFICATIONS.

TANK SCHEDULE												
TAG	SERVICE	TYPE	ORIENTATION	VOLUME L / Usgal	DIMENSIONS mm	TOP TAPPINGS # - mm	FRONT TAPPINGS # - mm	MAX. WORKING PRESSURE kPa / psi	CAPACITY kW	ELECT DATA		NOTES
										VOLTS	PHASE	
T-DHW	SUITE DOMESTIC HOT WATER	ELECTRIC	VERTICAL	225 / 60	OL: 1520 DIA: 610	2 - 20	TOP: 1 - 20 DRAIN MID: NONE BOTTOM: NONE	1035 / 150	6.0 kW UPPER AND LOWER	208	1	1, 2
ET-DHW	DOMESTIC HOT WATER	EXPANSION	VERTICAL	30 / 8	OL: 749 DIA: 413	1 - 12	TOP: NONE MID: NONE BOTTOM: NONE	860 / 125	-	-	-	1, 3

NOTE:
 1. REFER TO SPECIFICATIONS.
 2. TAPPINGS ARE FOR PIPE CONNECTIONS. PROVIDE ADDITIONAL TAPPINGS AS REQUIRED FOR SENSORS AND SAFETY VALVES.
 3. VOLUME IS ACCEPTANCE VOLUME.

HEAT RECOVERY VENTILATOR SCHEDULE																			
TAG	LOCATION	SERVICE	AIR FLOW l/s / cfm	EXT. STATIC PRESS. Pa / in	RPM	EFFICIENCY							FILTERS		ELECT DATA			NOTES	
						WINTER	SUMMER	S/A LAT °C / °F	E/A EAT °C / °F	O/A EAT °C / °F	SENSIBLE	LATENT	TOTAL	RECOVERED ENERGY kW / MBH	THICKNESS - NO. x SIZE	RATING	MOTOR HP		VOLTS
HRV-1	WORKSHOP Rm 126	OUTDOOR AIR	520 / 1100	185 / 0.75	1470	SUMMER	28.9 / 84	23.9 / 75	24.8 / 76.7	80.4%	75.7%	77.6%	5.5 / 19.2	50-2 x 400x500	MERV 8	1.0	208	3	1, 2, 3
		EXHAUST AIR	520 / 1100	185 / 0.75	1455	WINTER	-9.4 / 15	22.2 / 72	15.8 / 60.5	80.8%	76.0%	79.5%	18 / 61.9	50-2 x 400x500	MERV 13				
														50-2 x 400x500	MERV 8				

NOTE:
 1. INTERNAL UNIT COMPLETE WITH VIBRATION ISOLATION, FLEXIBLE CONNECTIONS, FILTERS, INTERNAL ENTHALPHY WHEEL.
 2. SUMMER: OUTDOOR EAT: 28.9/21.1°C [84/70°F] DB/WB, INDOOR EAT: 23.9/17.2°C [75/63°F] DB/WB.
 3. WINTER: OUTDOOR EAT: -9.4/9.4°C [15/15°F] DB/WB, INDOOR EAT: 22.2/12.2°C [72/54°F] DB/WB.

GRILLE, REGISTER AND DIFFUSER SCHEDULE										
TAG	TYPE	MANUF.	MODEL NO.	BORDER	MATERIAL	CORE STYLE	LOUVRE ORIENT.	VOLUME DAMPER	FASTENING	FINISH
SR1	SUPPLY REGISTER	TITUS	272	NOTE 1	ALUMINIUM	AIRFOIL DOUBLE DEFLECTION	L	YES	SCREW	BAKED ENAMEL, ALUMINIUM
ER1	EXHAUST REGISTER	TITUS	50F	NOTE 1	ALUMINIUM	12 x 12 x 12 mm EGGCRATE	-	YES	SCREW	BAKED ENAMEL, ALUMINIUM
TG1	TRANSFER GRILLE	TITUS	50F	NOTE 1	ALUMINIUM	12 x 12 x 12 mm EGGCRATE	-	NO	CONCEALED	BAKED ENAMEL, ALUMINIUM
DG1	DOOR GRILLE	TITUS	T700	SURFACE	ALUMINIUM	SIGHT-PROOF FIXED BLADES	L	NO	AUX FRAME	NOTE 5

NOTE:
 1. BORDER/MOUNTING FRAME: ALUMINIUM CURVED FOR SURFACE MOUNT OR FLAT FACE FOR T-BAR LAY-IN TO SUIT APPLICATION.

FAN SCHEDULE											
TAG	SERVICE	AIR FLOW l/s / cfm	STATIC PRESSURE Pa / in	SONES	RPM	MOTOR HP	ELECT DATA		MANUF. MODEL NO.	NOTES	
							VOLTS	PHASE			
TF-115	WASHROOM TRANSFER FAN	120 / 255	125 / 0.5	3.5	1430	95 W	120	1	COOK GC-542	1	
EF-126	WORKSHOP EXHAUST FAN	380 / 800	150 / 0.6	4.0	1098	1/3	120	1	COOK GC-862	1	
EF-126a	ELECTRICAL RM EXHAUST FAN	380 / 800	150 / 0.6	4.0	1098	1/3	120	1	COOK GC-862	1	
EF-205	FITNESS RM EXHAUST FAN	140 / 300	125 / 0.5	3.5	1250	100 W	120	1	COOK GC-622	2	
RH-1	RANGE HOOD	120 / 250	- / -	1.5	-	1.4 Amp	120	1	NuTone	3	

NOTE:
 1. DIRECT DRIVE CABINET FAN COMPLETE WITH ALUMINIUM GRILLE, VIBRATION ISOLATION, FLEXIBLE CONNECTIONS, SPEED CONTROLLER FOR BALANCING, CONTROL DAMPER.
 2. DIRECT DRIVE CABINET FAN COMPLETE WITH ALUMINIUM GRILLE, VIBRATION ISOLATION, FLEXIBLE CONNECTIONS, SPEED CONTROLLER FOR BALANCING, ALUMINIUM WALL CAP.
 3. HOOD COMPLETE WITH ALUMINIUM WALL CAP.

HEATING UNIT SCHEDULE									
TAG	TYPE	AIR FLOW l/s / cfm	INLET	OUTLET	HEATING CAPACITY kW	ELECT DATA		NOTES	
						VOLTS	PHASE		
FF-102	ELECTRIC FORCED FLOW HEATER	75 / 160	FRONT	FRONT	3.0	120	1	1	
FF-124	ELECTRIC FORCED FLOW HEATER	75 / 160	FRONT	FRONT	2.0	120	1	1	
UH-126-1	ELECTRIC UNIT HEATER	125 / 270	BACK	FRONT LOUVRE	7.5	208	1	2	
UH-126-2	ELECTRIC UNIT HEATER	125 / 270	BACK	FRONT LOUVRE	7.5	208	1	2	
BB-114	ELECTRIC BASEBOARD	- / -	BOTTOM	TOP	0.3	120	1	3	
BB-116-1	ELECTRIC BASEBOARD	- / -	BOTTOM	TOP	0.5	120	1	3	
BB-116-2	ELECTRIC BASEBOARD	- / -	BOTTOM	TOP	0.5	120	1	3	
BB-120	ELECTRIC BASEBOARD	- / -	BOTTOM	TOP	1.0	120	1	3	
BB-123	ELECTRIC BASEBOARD	- / -	BOTTOM	TOP	0.3	120	1	3	

NOTE:
 1. RECESSED UNIT COMPLETE WITH ALL UNIT MOUNTING HARDWARE.
 2. CEILING MOUNTED UNIT COMPLETE WITH ALL MOUNTING AND SUSPENSION HARDWARE.
 3. WALL MOUNTED UNIT COMPLETE WITH ALUMINIUM FRONT COVER.

5.	Issued for Tender	2018-12-14
4.	100% Review	2018-10-31
3.	95% Review	2018-10-01
2.	90% Review	2018-08-17
1.	60% Review	2018-07-27
Revision/Revision	Description/Description	Date/Date

Client/client
FISHERIES AND OCEANS, REAL PROPERTY, SAFETY AND SECURITY
 VANCOUVER, BC
 200-401 BURNARD ST.

Project title/Titre du projet

VICTORIA SAR STATION
 25 Huron Street, Victoria, B.C.

Consultant Signature Box Only

Designed by/Concept par
PDT

Drawn by/Dessiné par
HCP/DMM

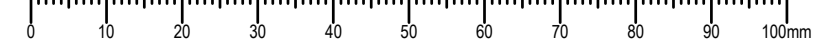
PWGS Project Manager/Administrateur de Projets TPSGC

PWGS Regional Manager, Architectural and Engineering Services/
 Gestionnaire régionale, Services d'architecture et de génie, TPSGC

Drawing title/Titre du dessin

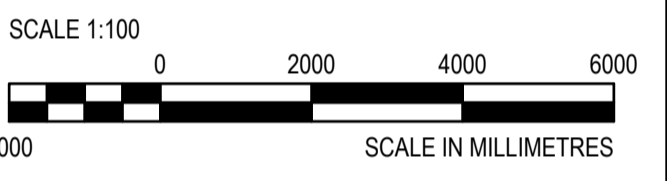
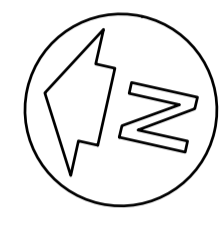
SCHEDULES

Project No./No. du projet	Sheet/ Feuille	Revision no./ La Révision no.
2017567	M0.02	





WSP PROJ # - 181-06966-00



5.	Issued for Tender	2018-12-14
4.	100% Review	2018-10-31
3.	95% Review	2018-10-01
2.	90% Review	2018-08-17
1.	60% Review	2018-07-27
	Description/Description	Date/Date

**FISHERIES AND OCEANS,
REAL PROPERTY,
SAFETY AND SECURITY**

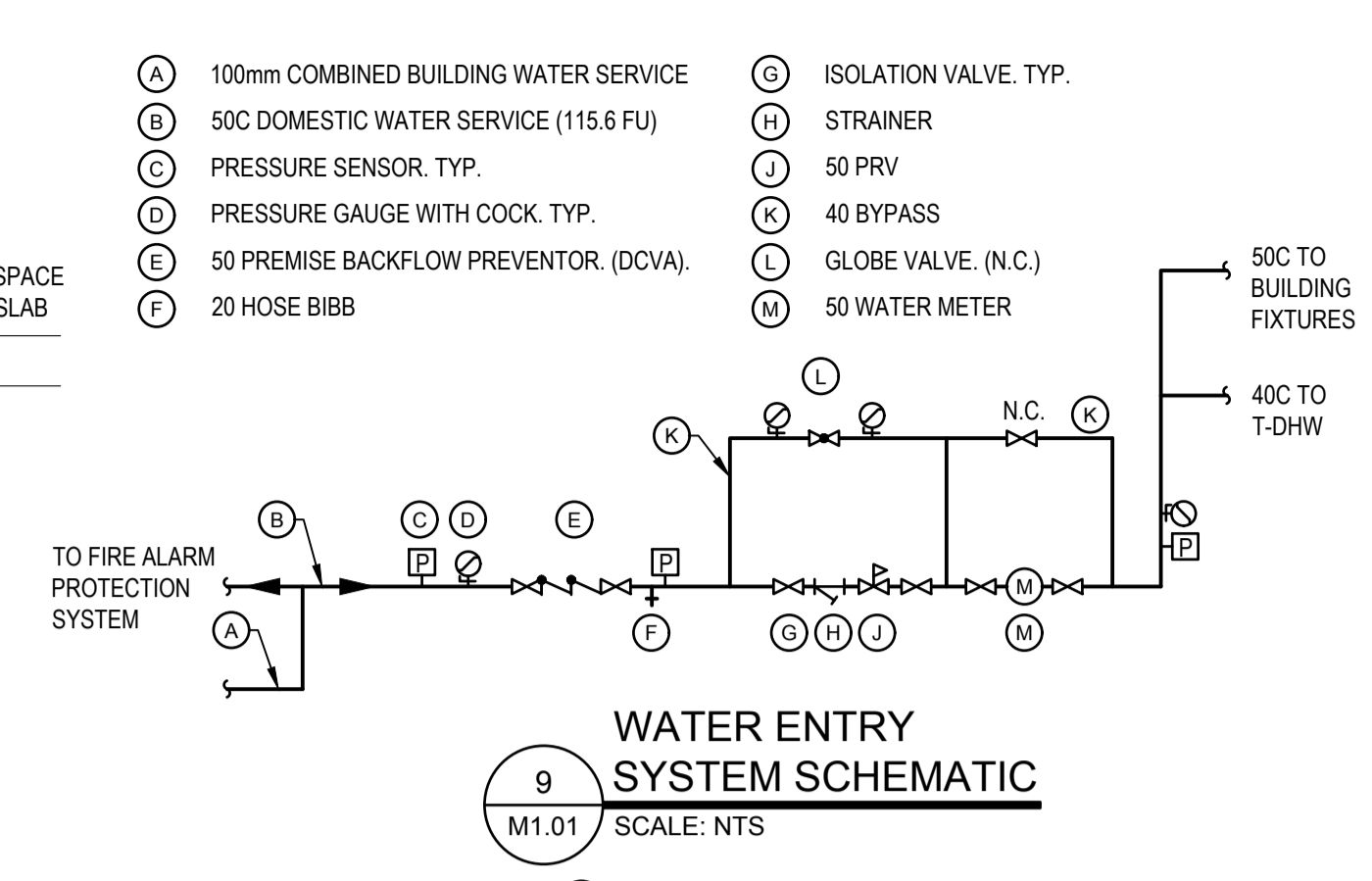
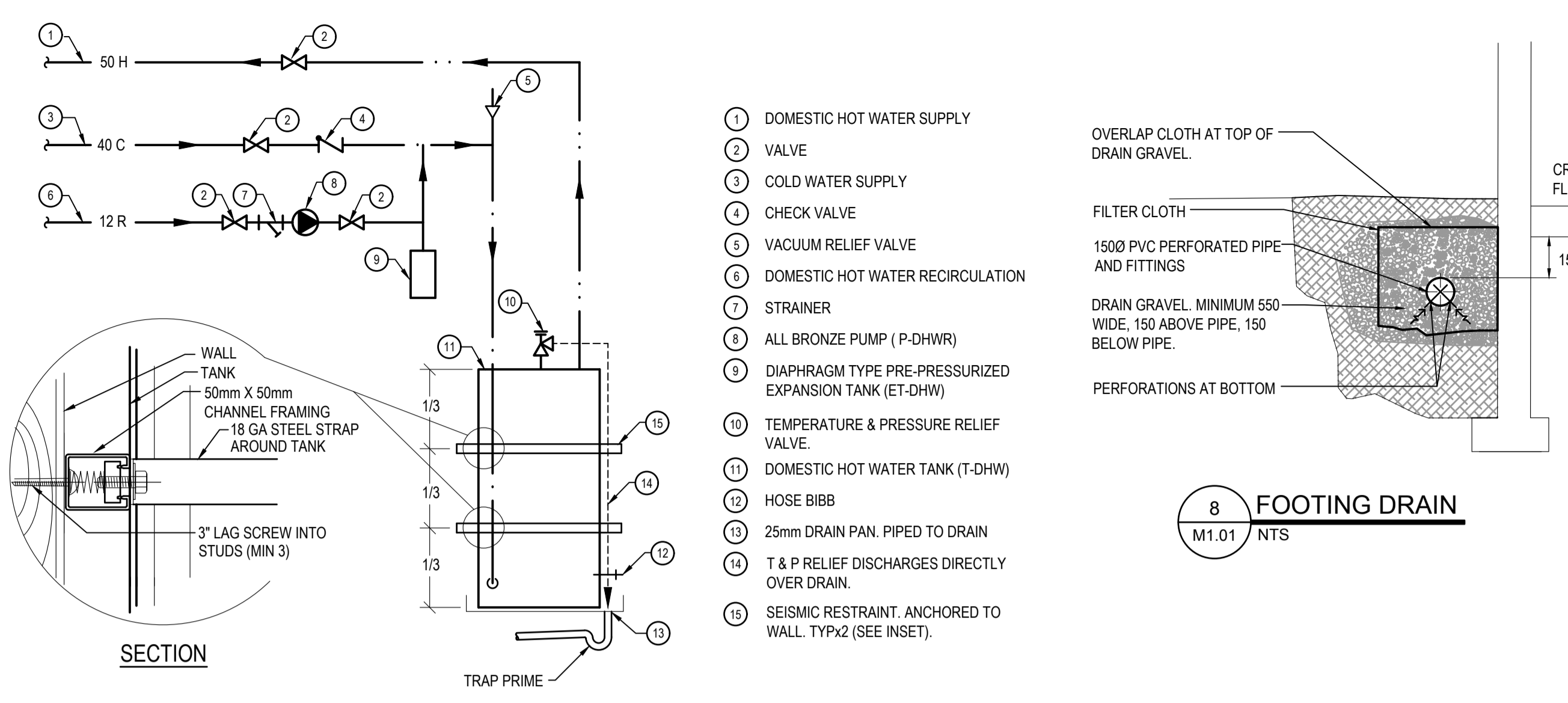
VANCOUVER, BC
200-401 BURRARD ST.

Project title/Titre du projet
VICTORIA SAR STATION
25 Huron Street, Victoria, B.C.

Consultant Signature Box Only
Designed by/Concept par
PDT
Drawn by/Dessiné par
HCP/DMM
PWGSC Project Manager/Administrateur de Projets TPSGC
PWGSC Regional Manager, Architectural and Engineering Services/
Gestionnaire régional, Services d'architectural et de génie, TPSGC

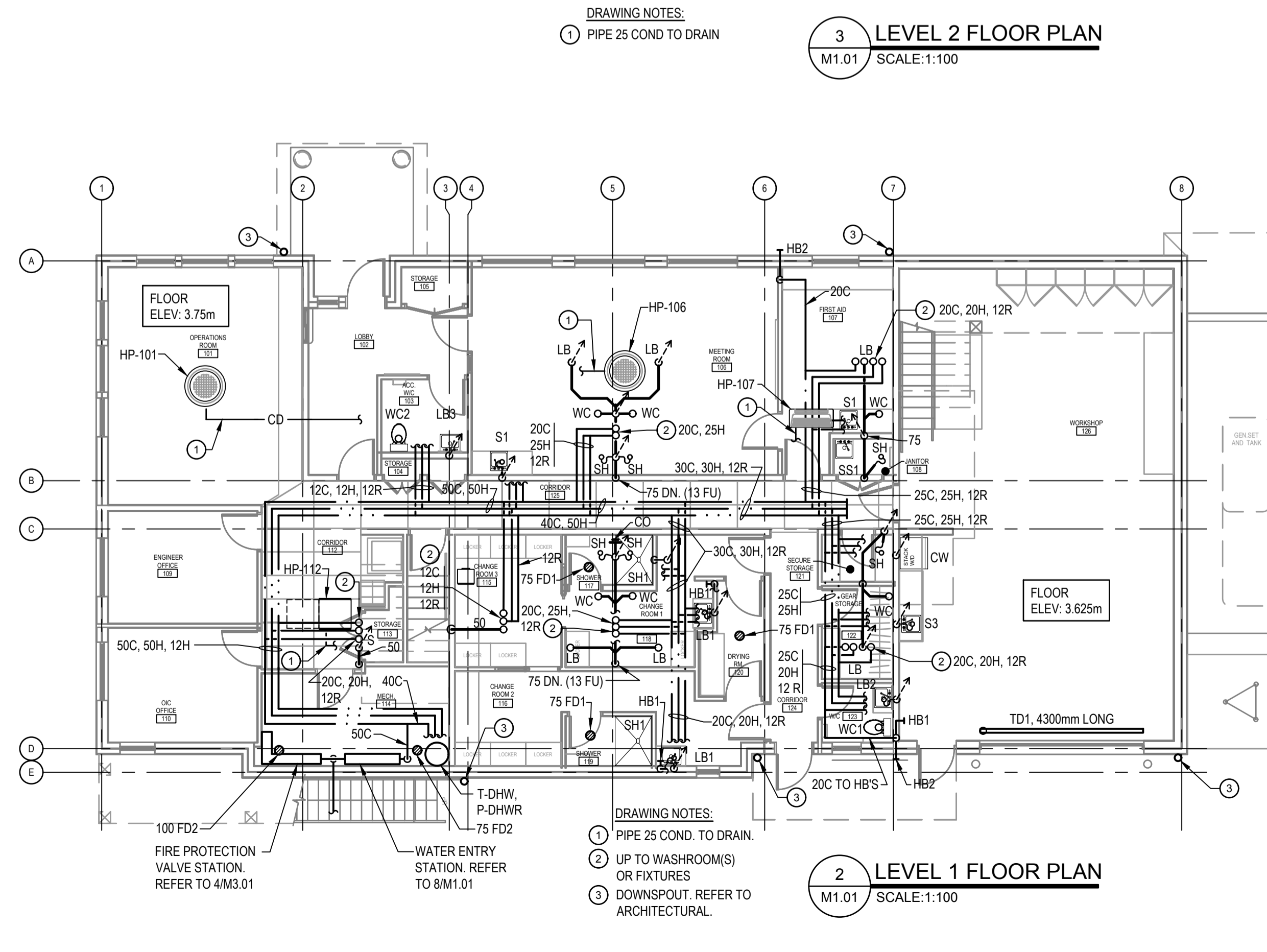
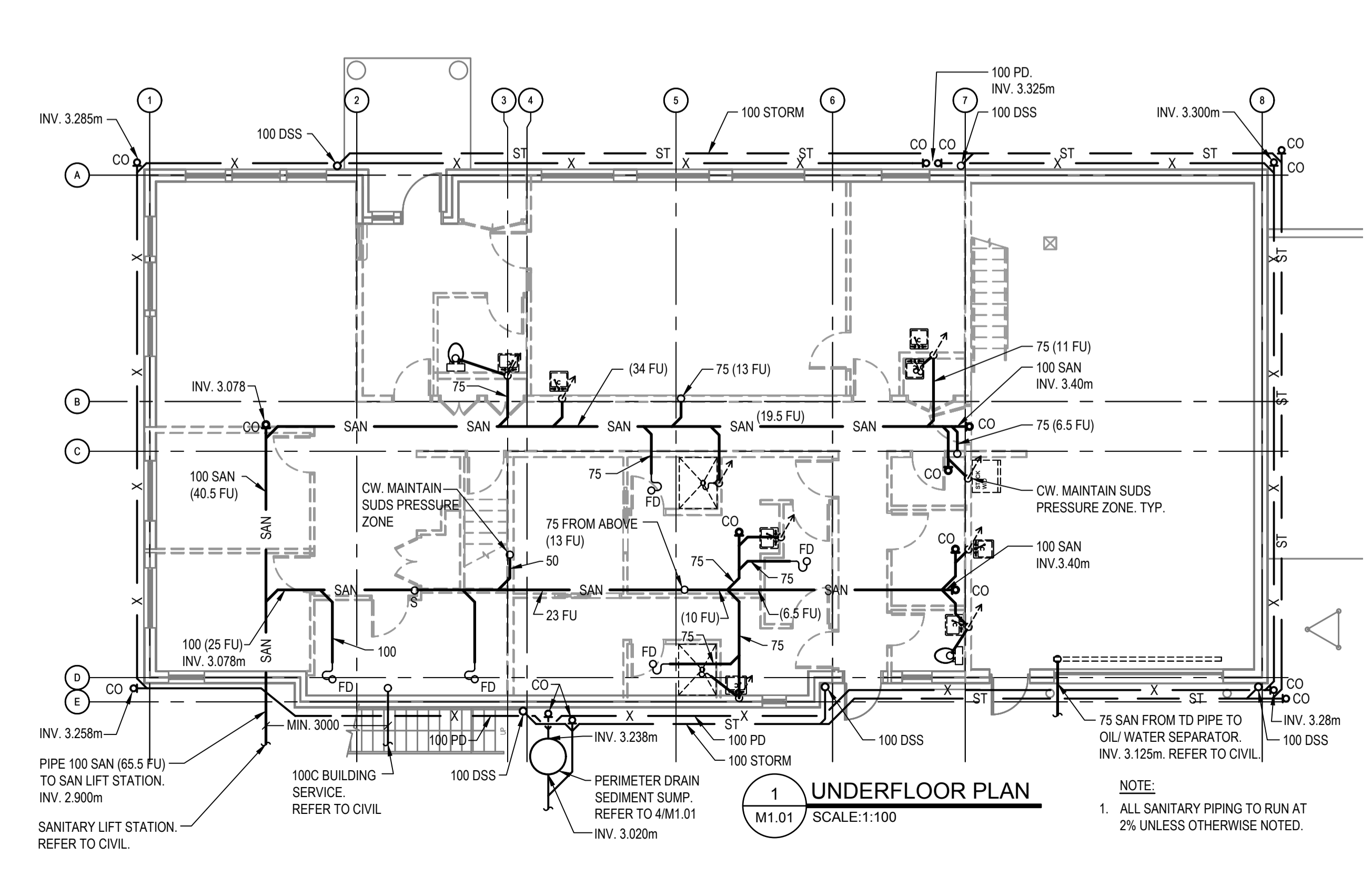
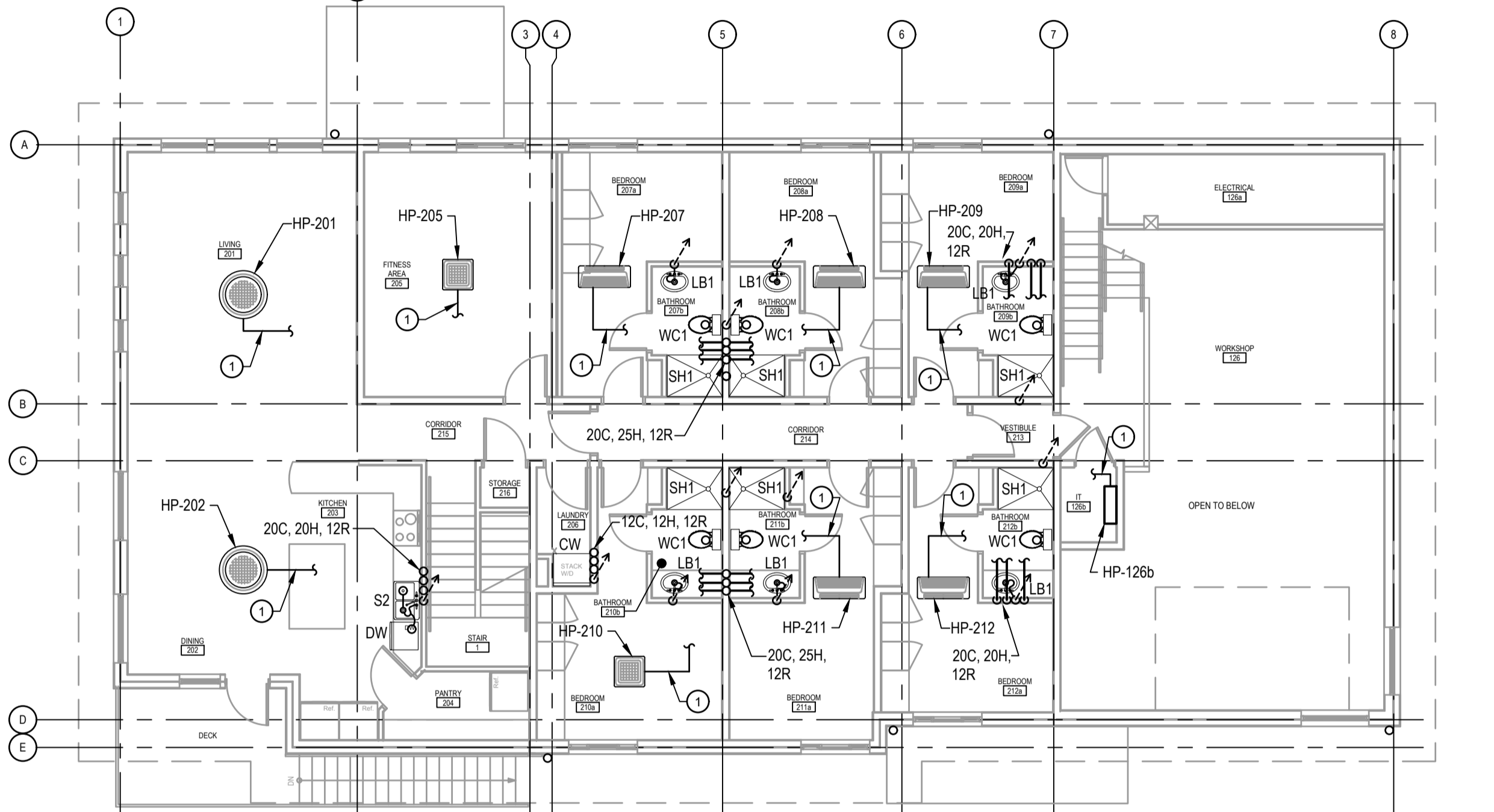
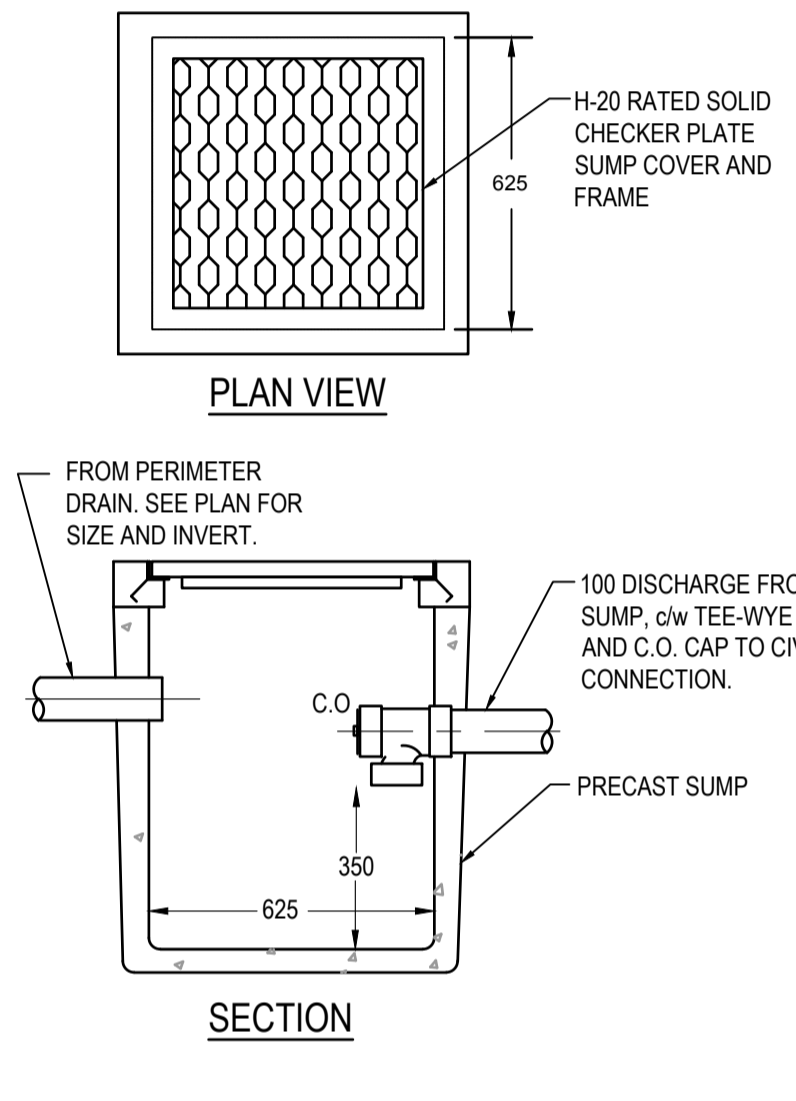
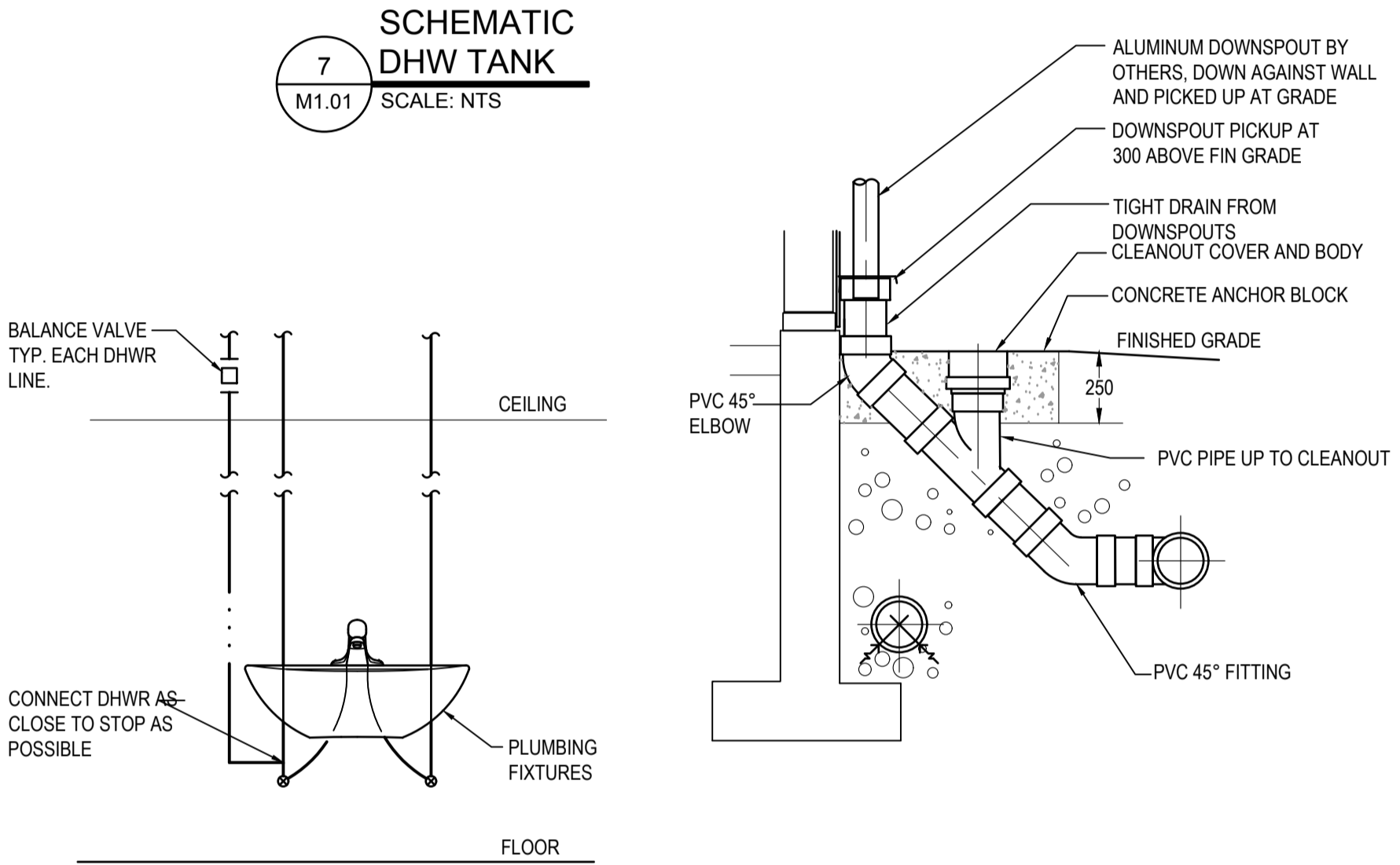
**PLUMBING
UNDERFLOOR,
LEVEL 1 & LEVEL 2
PLANS**

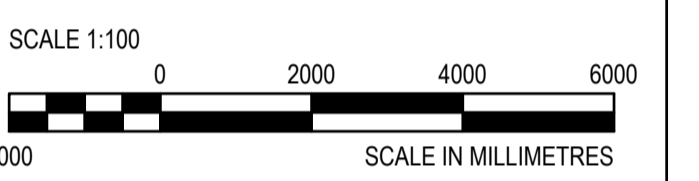
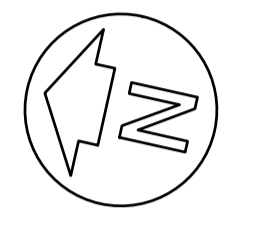
Project No./No. du projet	Sheet/ Feuille	Revision no./ La Révision no.
2017567	M1.01	



PLUMBING FIXTURE PIPE SIZING CHART

DESCRIPTION / TYPE	ROUGH-IN CONNECTIONS			
	WASTE	VENT	COLD WATER	HOT WATER
LAVATORY BASIN (LB)	400	400	120	120
WATER CLOSET (WC)	750	400	120	120
SHOWER (SH)	400	400	120	120
SINK (S)	400	400	120	120
DISHWASHER (DW)	400	400	-	120
HOSE BIBB (HB)	-	-	200	-
CLOTHES WASHER (CW)	500	400	120	120
SERVICE SINK (SS)	500	400	120	120





5.	Issued for Tender	2018-12-14
4.	100% Review	2018-10-31
3.	95% Review	2018-10-01
2.	90% Review	2018-08-17
1.	60% Review	2018-07-27
	Revision/Description	Date/Date

Client/Client
**FISHERIES AND OCEANS,
REAL PROPERTY,
SAFETY AND SECURITY**
VANCOUVER, BC
200-401 BURRARD ST.

Project title/Titre du projet
**VICTORIA SAR
STATION**
25 Huron Street, Victoria, B.C.

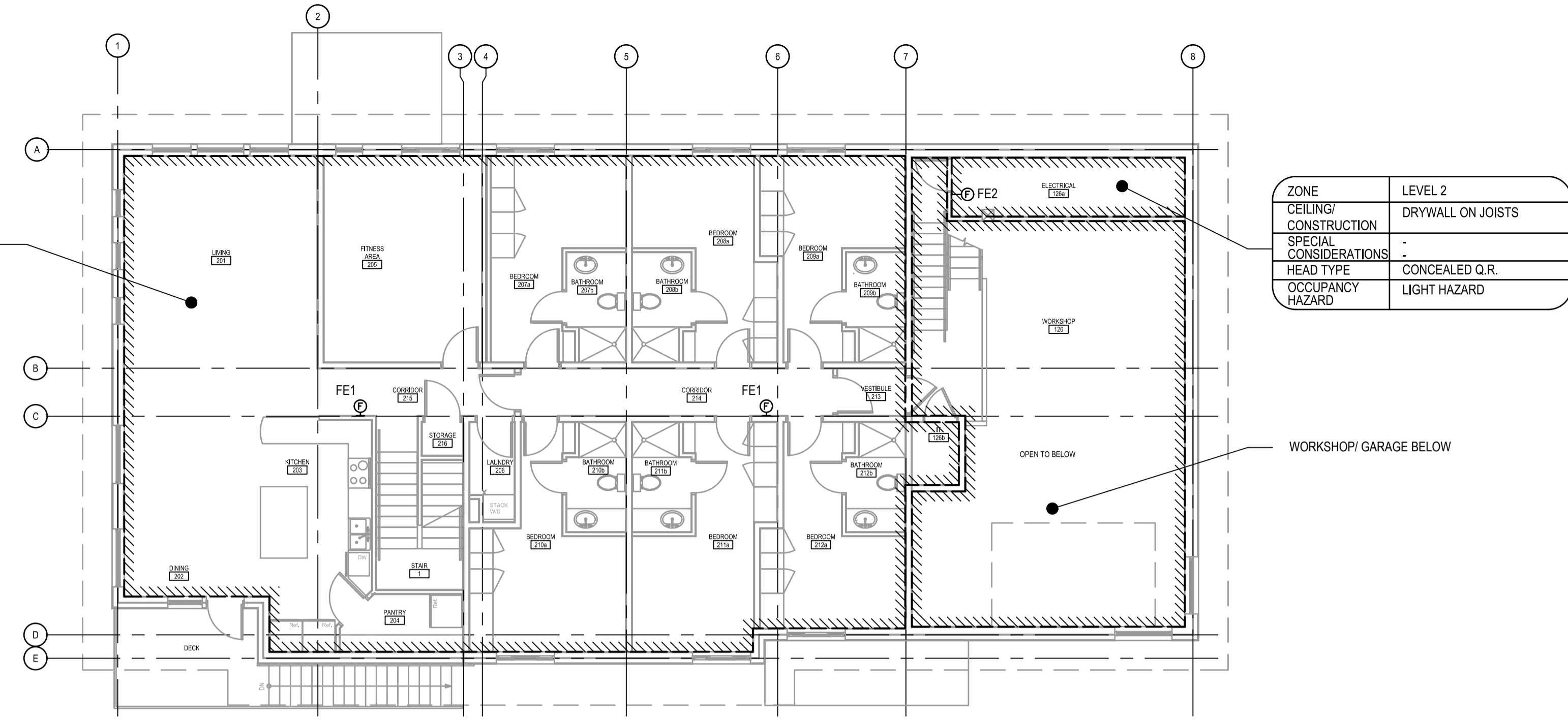
Consultant Signature Box Only
Designed by/Concept par
PDT
Drawn by/Dessiné par
HCP/DMM
PWGSC Project Manager/Administrateur de Projets TPSGC
--
PWGSC: Regional Manager, Architectural and Engineering Services/
Gestionnaire régionale, Services d'architecture et de génie, TPSGC
--

Drawing title/Titre du dessin
**FIRE PROTECTION
LEVEL 1 AND LEVEL 2 PLANS**

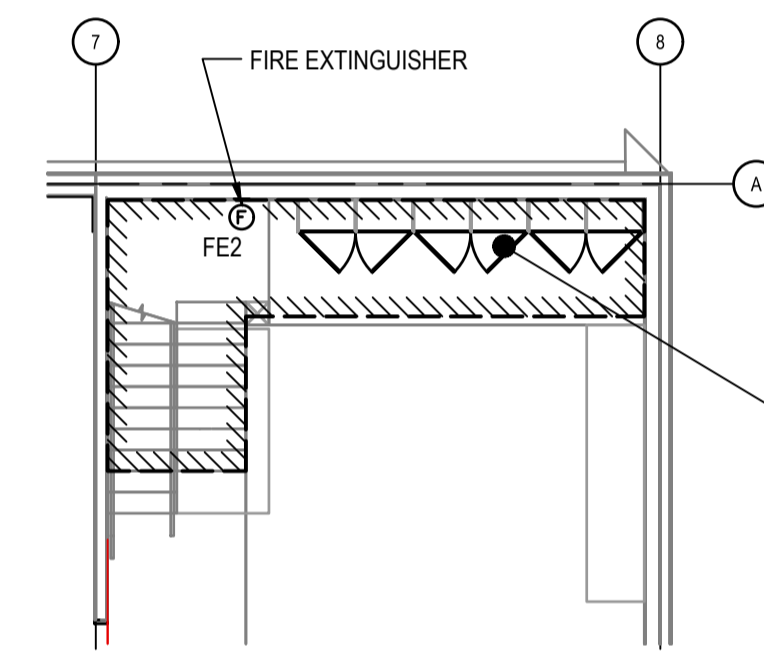
Project No./No. du projet 2017567	Sheet/ Feuille M3.01	Revision no./ La Révision no.
---	--------------------------------	-------------------------------------

ZONE	LEVEL 2
CEILING/ CONSTRUCTION	DRYWALL ON JOISTS
SPECIAL CONSIDERATIONS	-
HEAD TYPE	CONCEALED Q.R.
OCCUPANCY HAZARD	LIGHT HAZARD

ZONE	LEVEL 2
CEILING/ CONSTRUCTION	DRYWALL ON JOISTS
SPECIAL CONSIDERATIONS	-
HEAD TYPE	CONCEALED Q.R.
OCCUPANCY HAZARD	LIGHT HAZARD



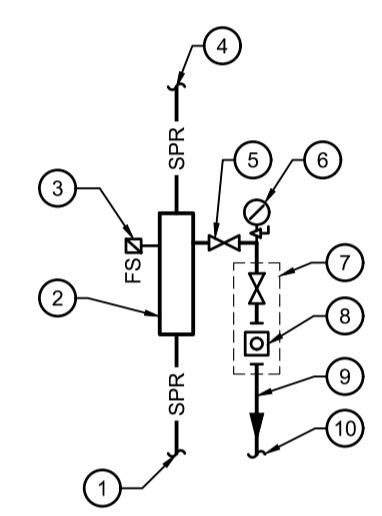
3 LEVEL 2 FLOOR PLAN
M3.01 SCALE:1:100



2 MEZZ. FLOOR PLAN
M3.01 SCALE:1:100

ZONE	LEVEL 1
CEILING/ CONSTRUCTION	DRYWALL ON JOISTS
SPECIAL CONSIDERATIONS	-
HEAD TYPE	CONCEALED Q.R.
OCCUPANCY HAZARD	ORDINARY HAZARD GROUP 2

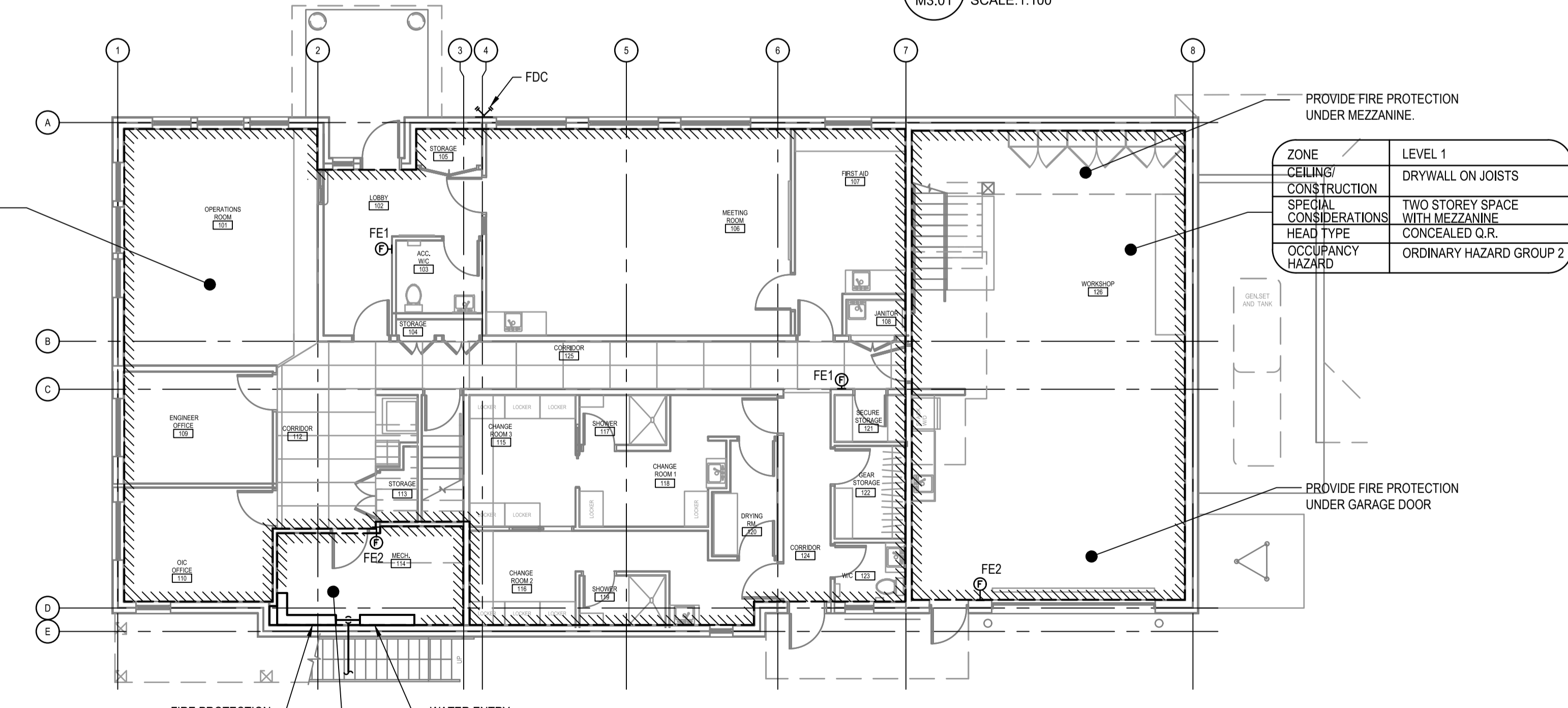
DETAIL NOTES:



- 1 WET FIRE WATER SUPPLY PIPE
- 2 ZONE VALVE MANIFOLD
- 3 FLOW SWITCH
- 4 TO WET SPRINKLER SYSTEM
- 5 DRAIN VALVE (N.O.)
- 6 PRESSURE GAUGE W/ STOP
- 7 INSPECTOR'S TEST & DRAIN ASSEMBLY SIZED TO NFPA 13 (N.O.)
- 8 SITE PORT
- 9 DRAIN SIZED TO MANIFOLD
- 10 PIPE TO DRAIN.

**5 TYPICAL VERTICAL WET ZONE
VALVE ALARM STATION**
M3.01 NTS

ZONE	LEVEL 1
CEILING/ CONSTRUCTION	DRYWALL ON JOISTS
SPECIAL CONSIDERATIONS	-
HEAD TYPE	CONCEALED Q.R.
OCCUPANCY HAZARD	LIGHT HAZARD



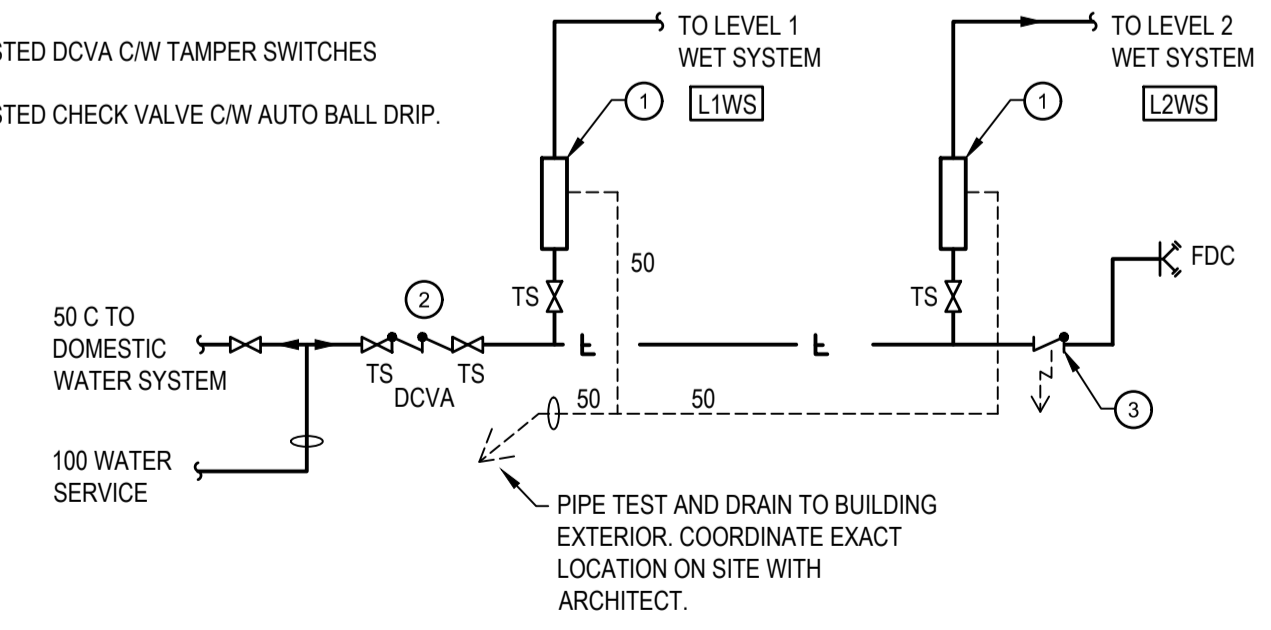
1 LEVEL 1 FLOOR PLAN
M3.01 SCALE:1:100

ZONE	LEVEL 1
CEILING/ CONSTRUCTION	DRYWALL ON JOISTS
SPECIAL CONSIDERATIONS	TWO STOREY SPACE WITH MEZZANINE
HEAD TYPE	CONCEALED Q.R.
OCCUPANCY HAZARD	ORDINARY HAZARD GROUP 2

ZONE	LEVEL 1
CEILING/ CONSTRUCTION	DRYWALL ON JOISTS
SPECIAL CONSIDERATIONS	-
HEAD TYPE	CONCEALED Q.R.
OCCUPANCY HAZARD	ORDINARY HAZARD GROUP 1

NOTE:
1. ALL SPRINKLER PIPING TO RUN
THROUGH JOISTS. TYP.

- 1 FLOW MANIFOLD STATION. REFER TO M3.01
- 2 LISTED DCVA C/W TAMPER SWITCHES
- 3 LISTED CHECK VALVE C/W AUTO BALL DRIP.



4 FIRE PROTECTION SCHEMATIC
M3.01 SCALE: NTS