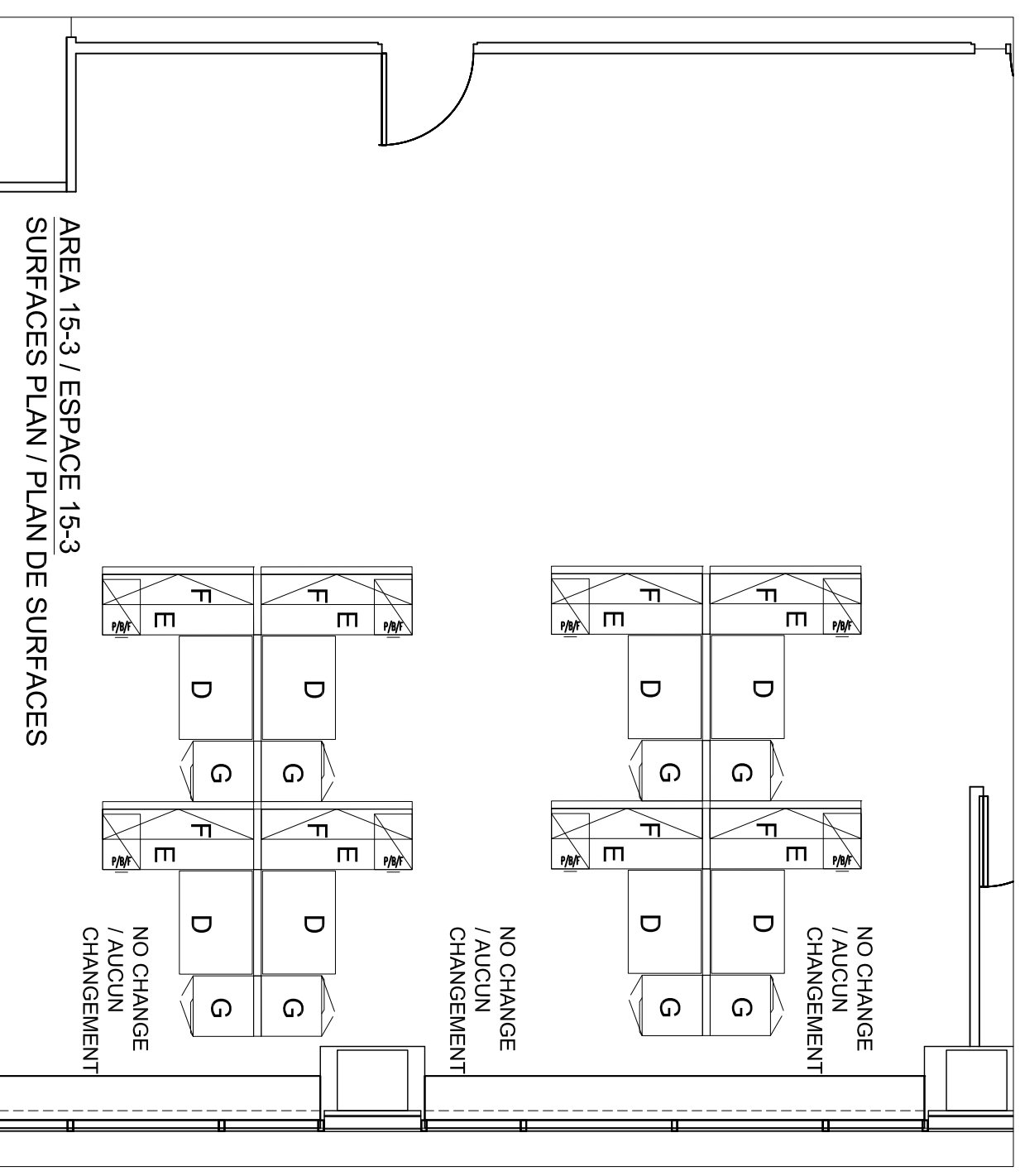
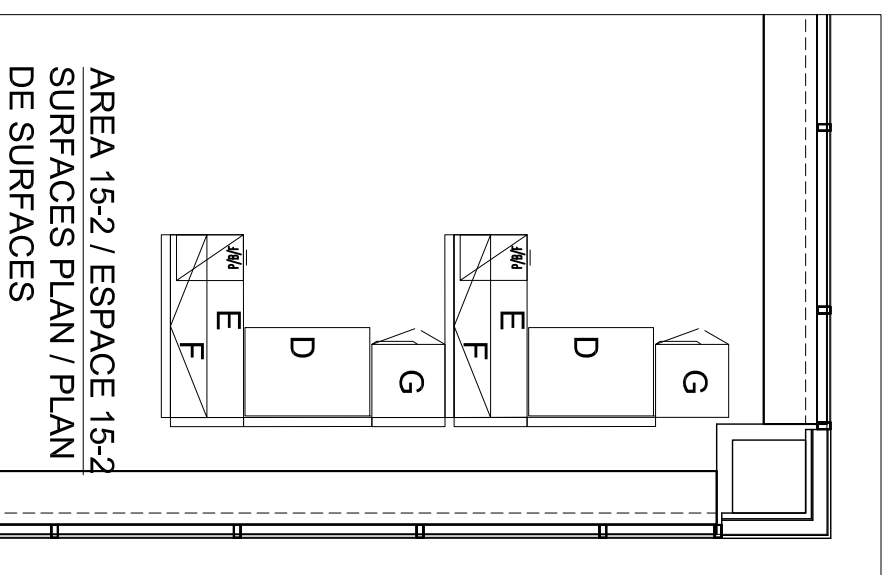
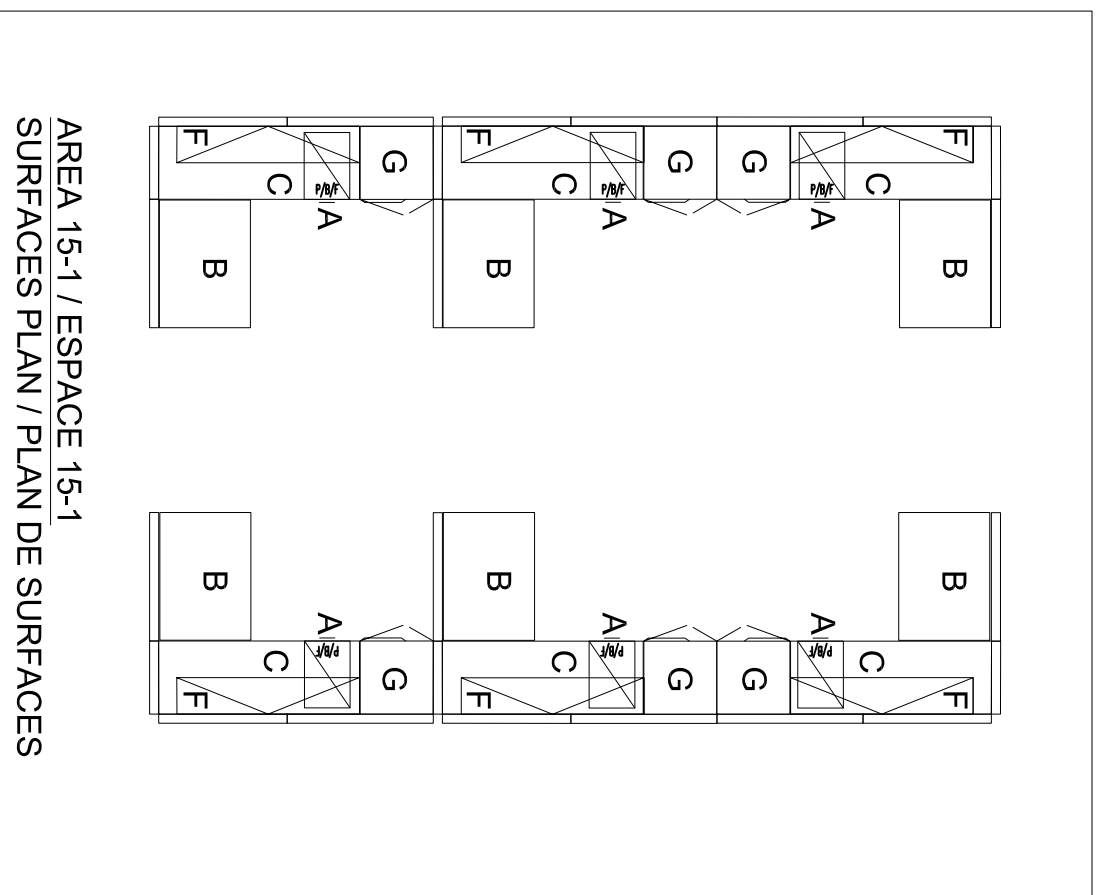


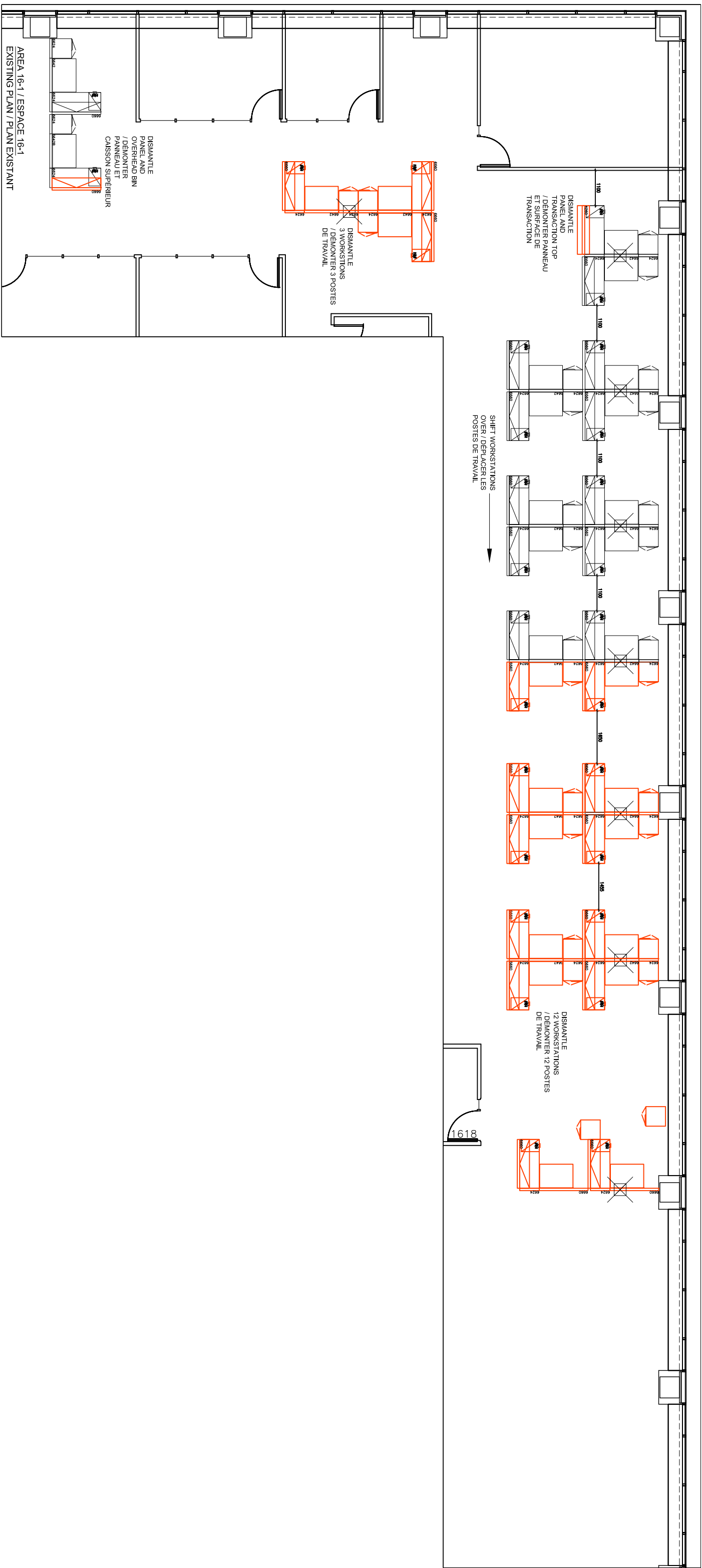
PANEL MATRIX BREAKDOWN / DÉTAILS DE MODÈLE DE CLOISON:

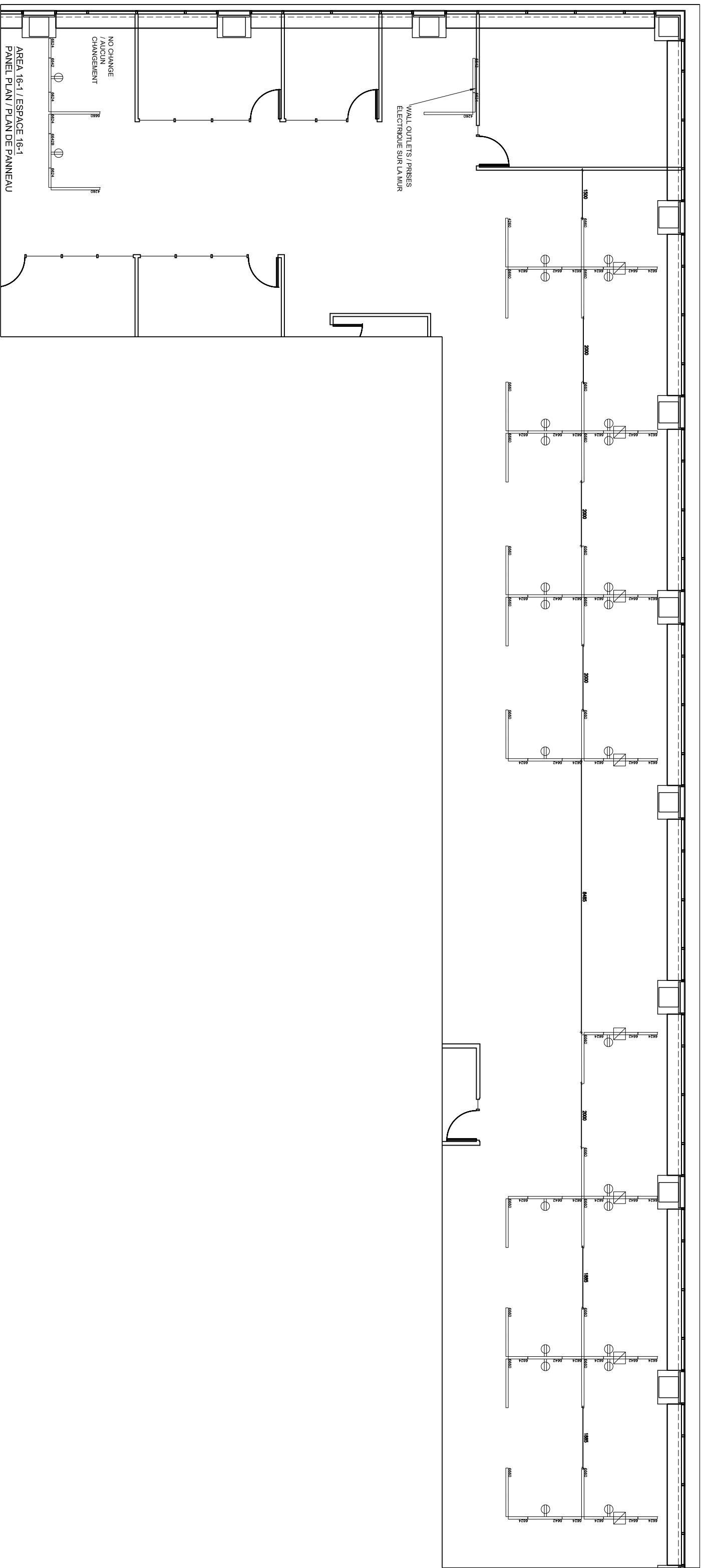
- PANEL MATRIX A / MODÈLE DE CLOISON A
- PANEL MATRIX B / MODÈLE DE CLOISON B
- PANEL MATRIX C / MODÈLE DE CLOISON C
- PANEL MATRIX D / MODÈLE DE CLOISON D
- EXISTING PANELS / PANNEAU EXISTANT

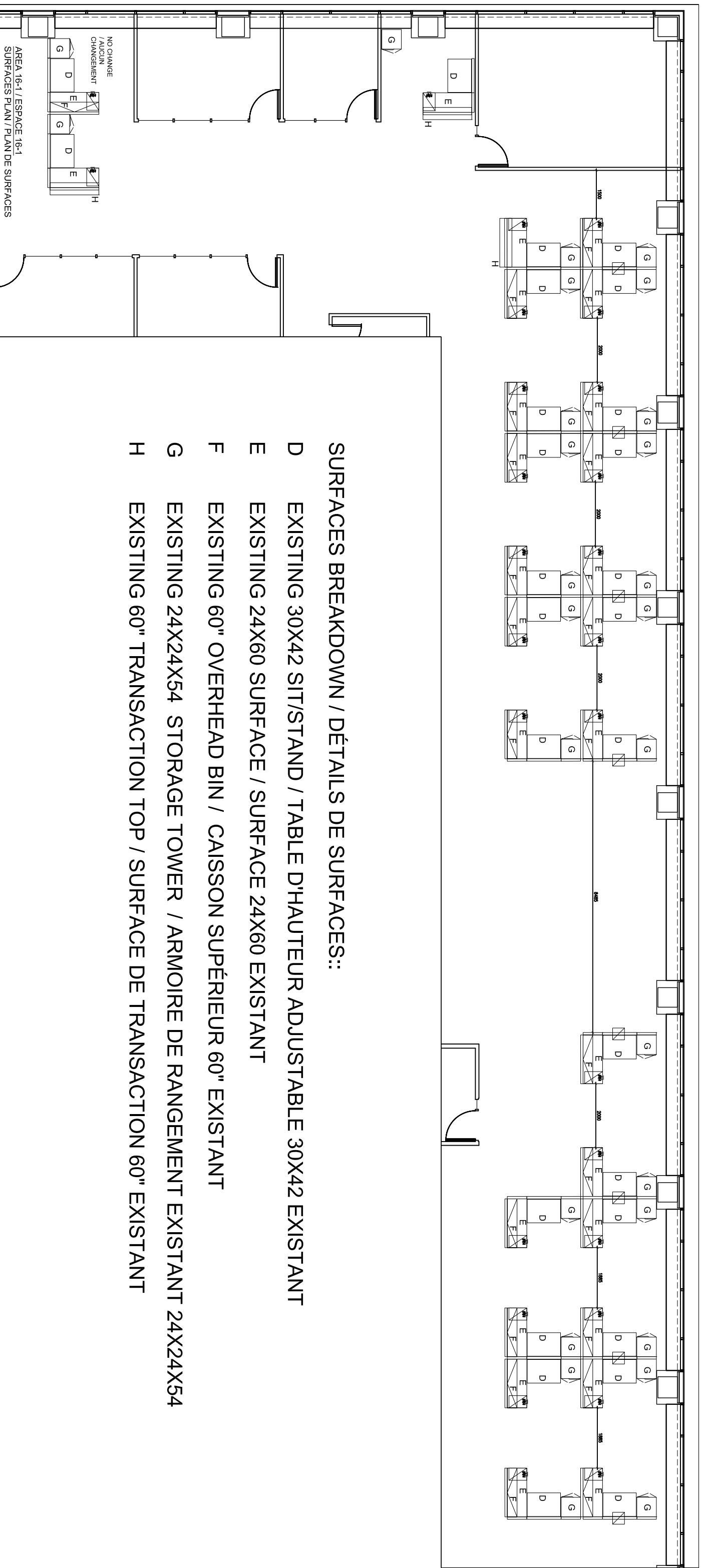


**SURFACES BREAKDOWN / DÉTAILS DE SURFACES:**

- A NEW PEDESTAL / CAISSON NOUVEAU
- B NEW 30X42 SIT/STAND / TABLE D'HAUTEUR ADJUSTABLE 30X42 NOUVEAU
- C NEW 24X66 SURFACE / SURFACE 24X66 NOUVEAU
- D EXISTING 30X42 SIT/STAND / TABLE D'HAUTEUR ADJUSTABLE 30X42 EXISTANT
- E EXISTING 24X60 SURFACE / SURFACE 24X60 EXISTANT
- F EXISTING 60" OVERHEAD BIN / CAISSON SUPÉRIEUR 60" EXISTANT
- G EXISTING 24X24X54 STORAGE TOWER / ARMOIRE DE RANGEMENT EXISTANT 24X24X54







**SURFACES BREAKDOWN / DÉTAILS DE SURFACES::**

- D EXISTING 30X42 SIT/STAND / TABLE D'HAUTEUR ADJUSTABLE 30X42 EXISTANT
- E EXISTING 24X60 SURFACE / SURFACE 24X60 EXISTANT
- F EXISTING 60" OVERHEAD BIN / CAISSON SUPÉRIEUR 60" EXISTANT
- G EXISTING 24X24X54 STORAGE TOWER / ARMOIRE DE RANGEMENT EXISTANT 24X24X54
- H EXISTING 60" TRANSACTION TOP / SURFACE DE TRANSACTION 60" EXISTANT

NO CHANGE / AUCUN CHANGEMENT  
 AREA 16-1 / ESPACE 16-1  
 SURFACES PLAN / PLAN DE SURFACES