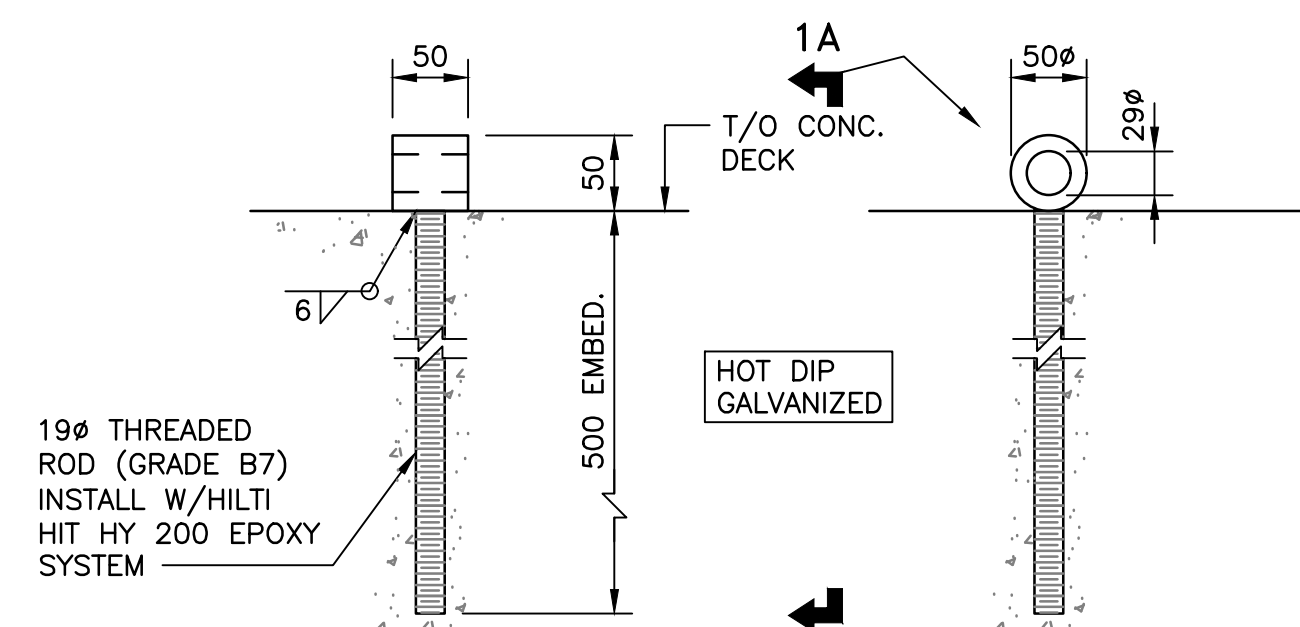
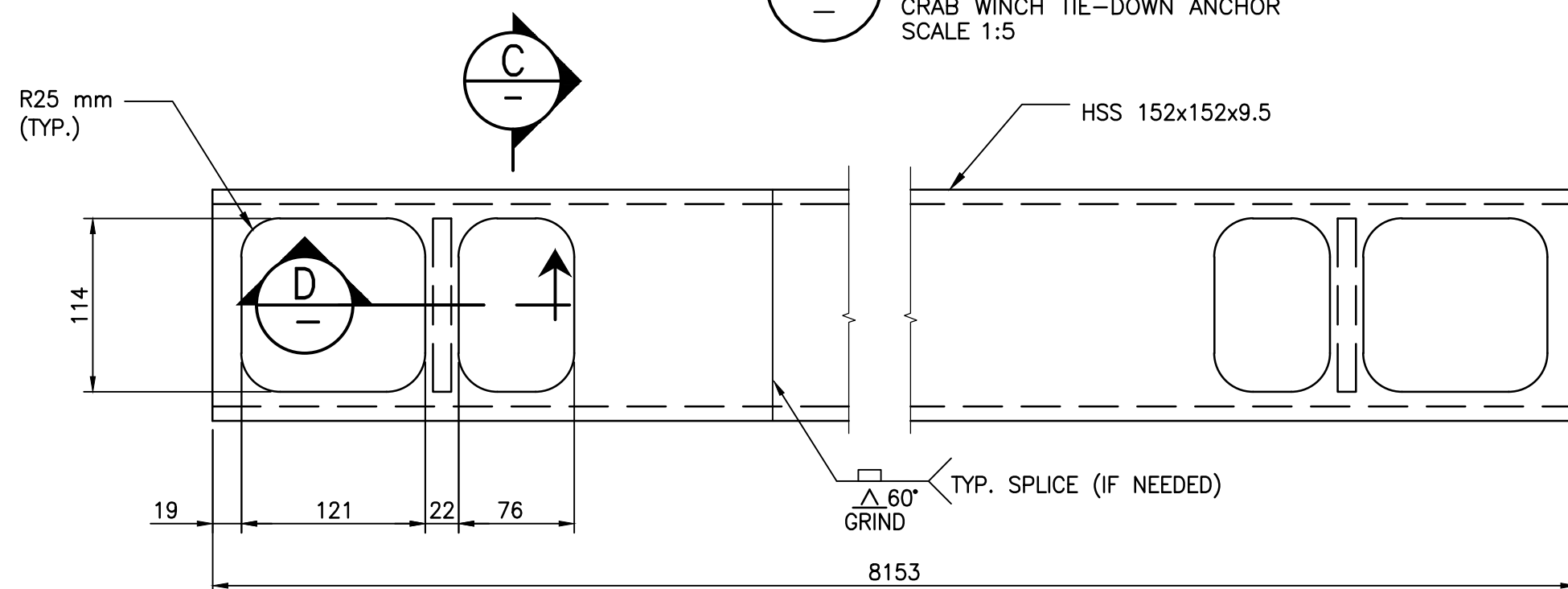


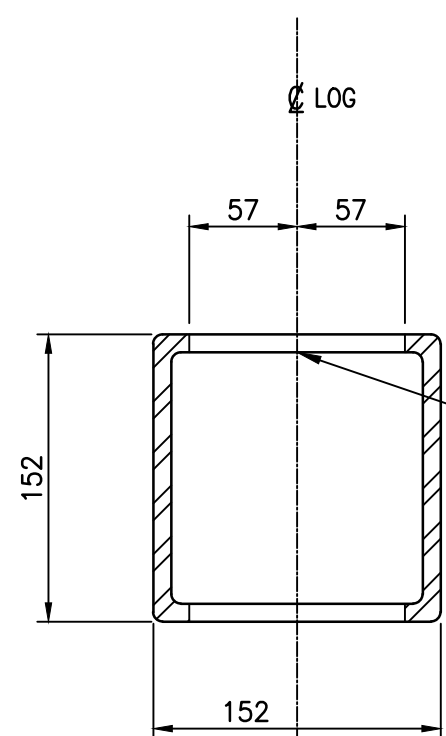
PLAN
CONCRETE DECK
SCALE 1:50



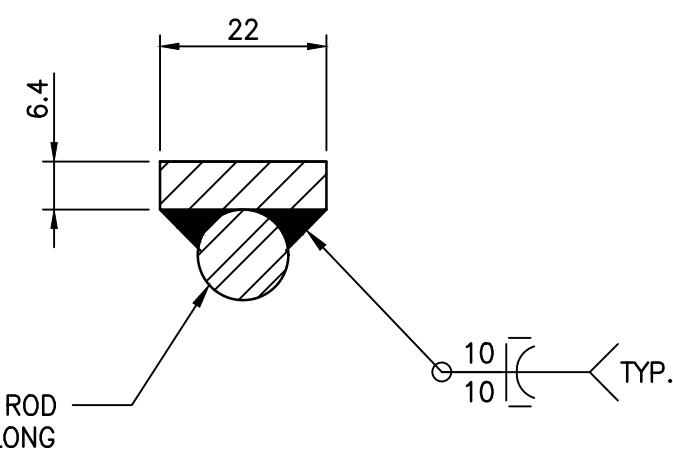
1A
DETAIL
CRAB WINCH TIE-DOWN ANCHOR
SCALE 1:5



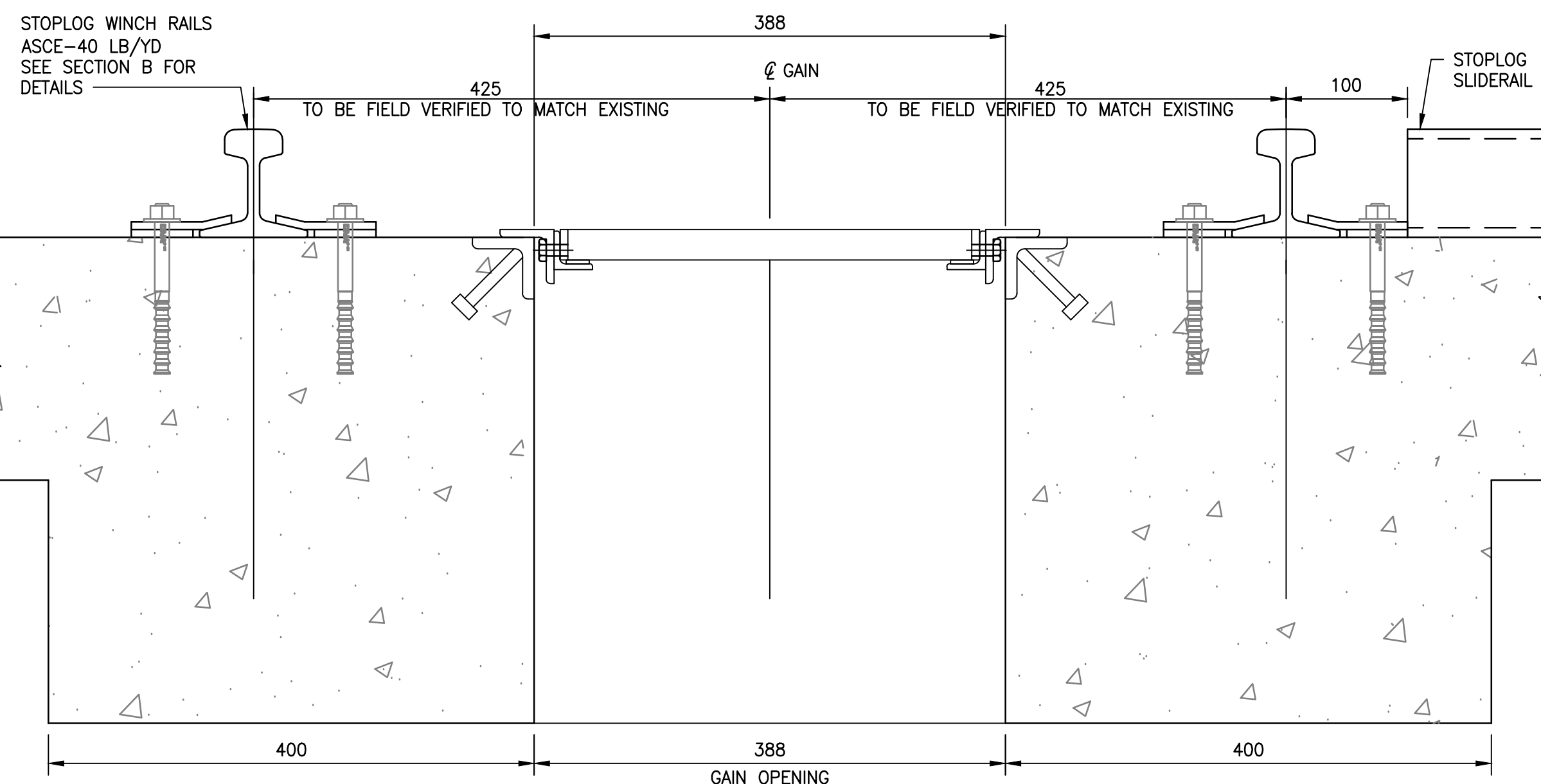
PLAN
STEEL HALF LOG
SCALE 1:4



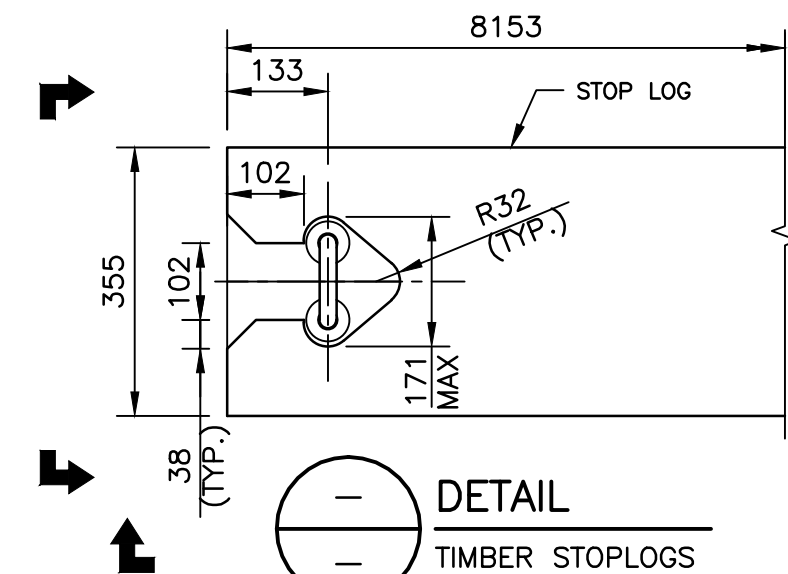
C
SECTION
SCALE 1:4



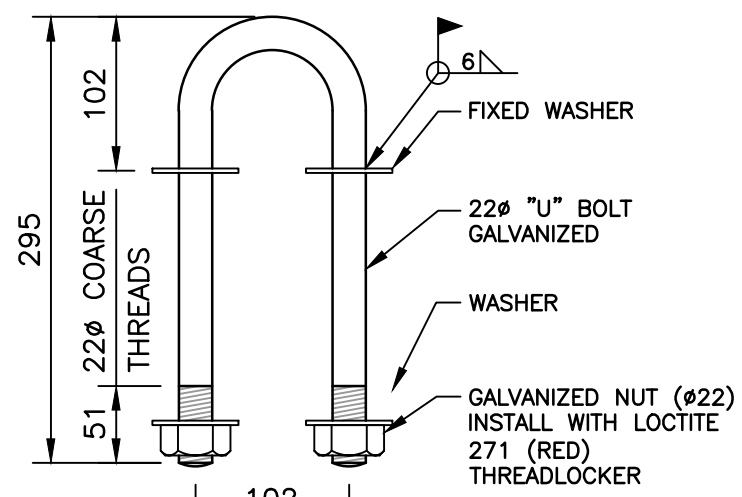
D
SECTION
SCALE 1:1



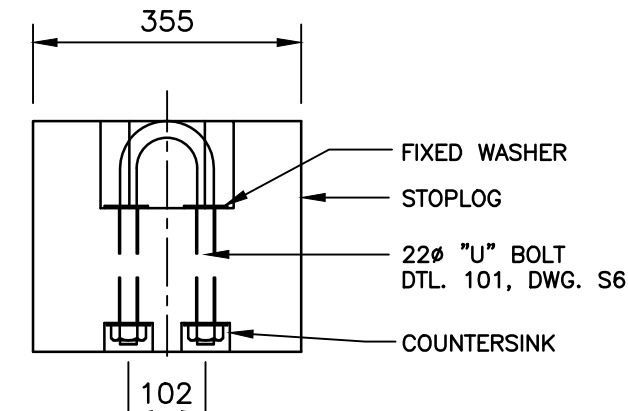
A
SECTION
ALUMINUM GAIN COVER AND WINCH RAILS
SCALE 1:4



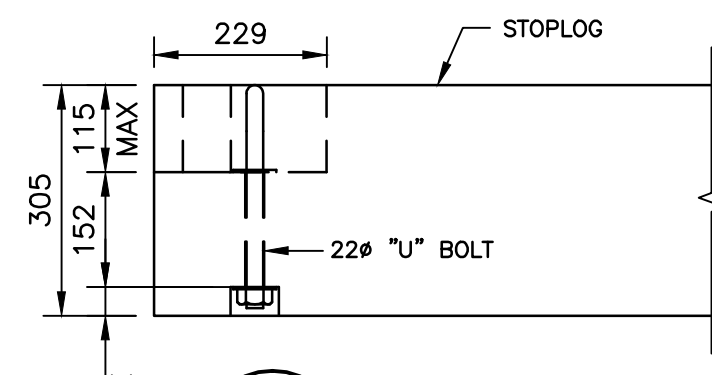
DETAIL
TIMBER STOPLOGS
SCALE 1:10



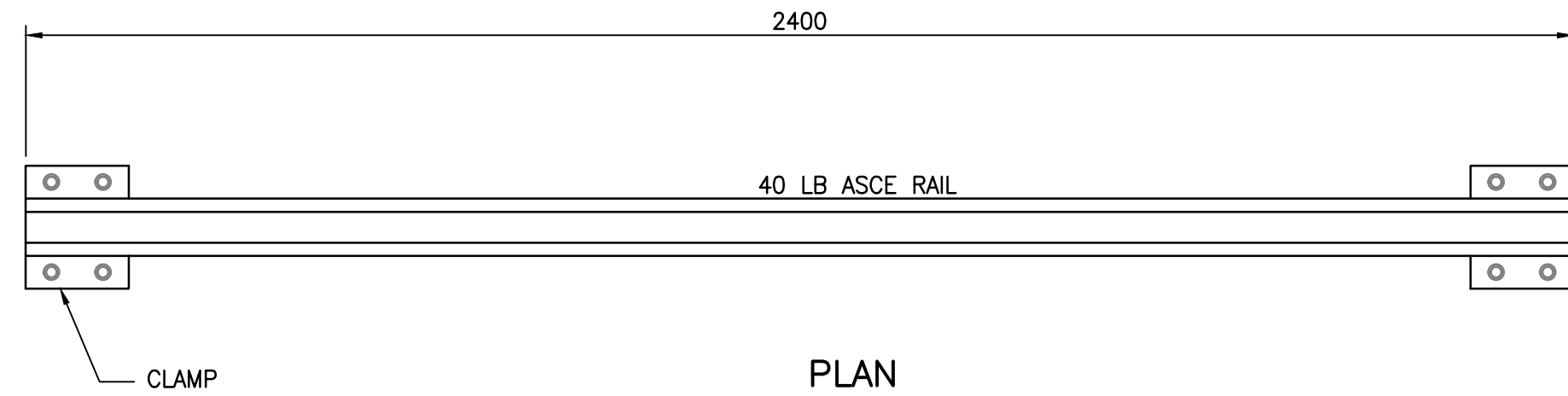
DETAIL - U-BOLT
TIMBER STOPLOGS U-BOLT
SCALE 1:5



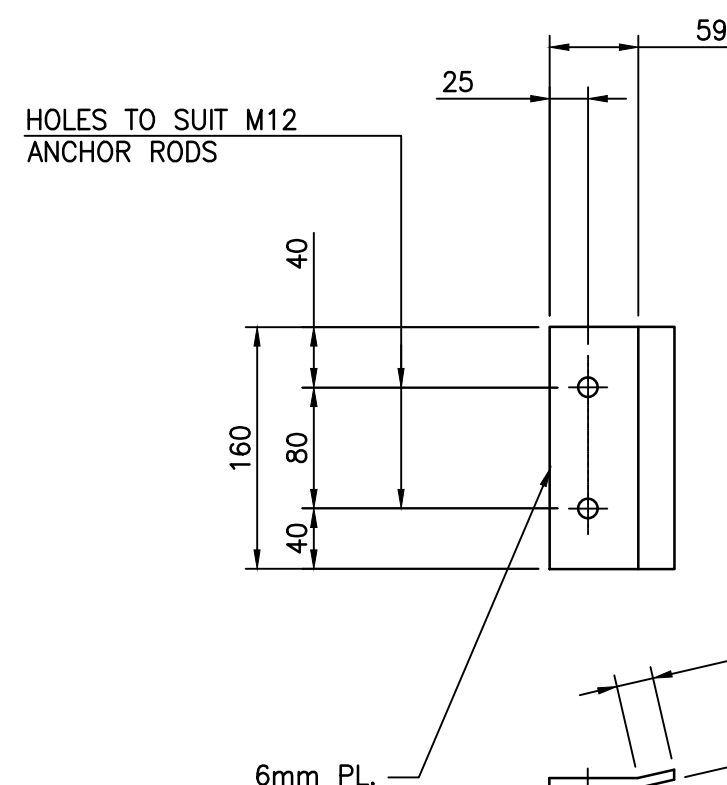
ELEVATION
TIMBER STOPLOGS
SCALE 1:10



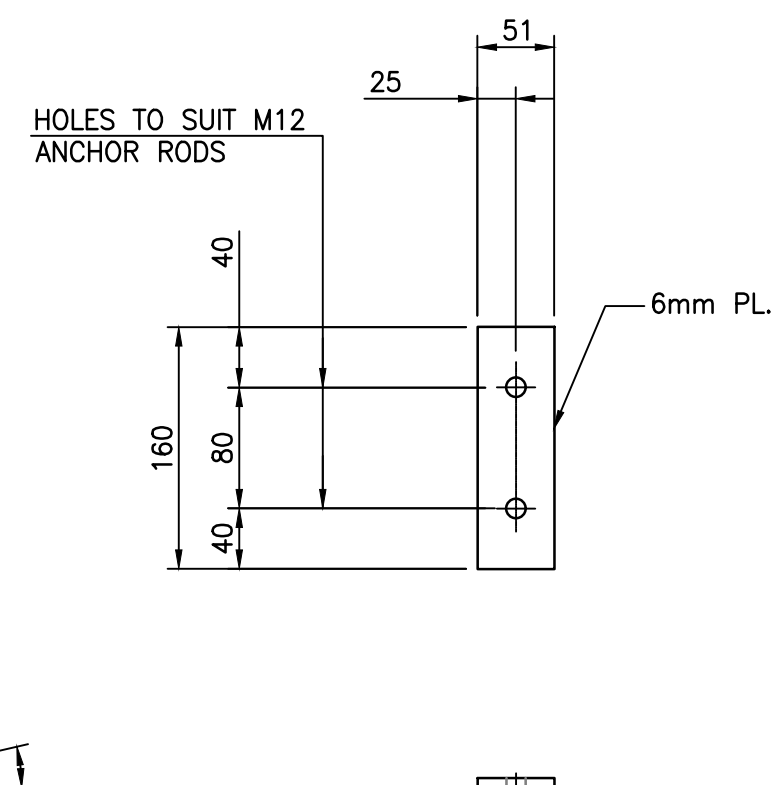
ELEVATION
TIMBER STOPLOGS
SCALE 1:10



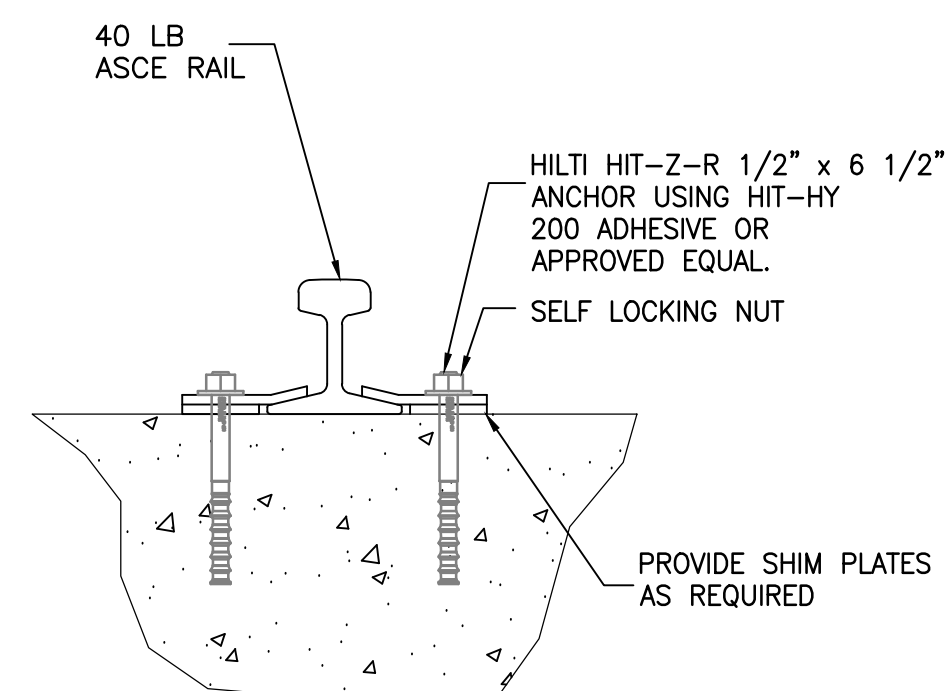
PLAN
LOG SLIDE RAIL
SCALE 1:5



DETAIL
CLAMP PLATE
SCALE 1:5



DETAIL
SHIM PLATE
SCALE 1:5



B
SECTION
RAIL
SCALE 1:5

STOPLOG NOTES:

1. STOPLOG LIFTING BOLT MUST BE INSTALLED BELOW THE PLANE OF THE TOP AND BOTTOM OF TIMBER BEAM STOPLOG
2. STEEL TO BE COLD-ROLLED STEEL STRUCTURAL MEMBERS AND CONFORM TO CSA G40.20-04 OR ASTM A36.
3. WOOD TO CONFORM TO STANDARD GRADING RULES FOR CANADIAN LUMBER (N.L.G.A. 2003) OR U.S. LUMBER GRADING W.C.L.I.B. 2004 /OR W.W.P.A. 2005.
4. WELDING TO BE PERFORMED BY A CERTIFIED WELDER AND CONFORM TO CSA W59 OR AWS D1.1.
5. LIFTING BOLT TO BE INSTALLED CENTERED AND SQUARE TO TIMBER END TO THE SPECIFIED DIMENSIONS AND SAME ORIENTATION ON EACH END OF STOPLOG.

PRELIMINARY

NOT TO BE USED FOR CONSTRUCTION

E	RE-ISSUED FOR TENDER	KJC	19/01/29
D	RE-ISSUED FOR TENDER	KJC	18/08/27
C	ISSUED FOR TENDER	PJZ	18/07/31
B	ISSUED FOR 99% REVIEW	PJZ	18/07/05
A	ISSUED FOR 66% REVIEW	KJC	18/05/09
No.	Description	Dwn By Des Par	Date

Revision / Révision

A	A Detail number No. du détail
B	B Location dwg. no. No. sur dessin

Project title / Titre du projet

TRENT-SEVERN WATERWAY
DAM AT LOCK 38
REPLACEMENT

Drawing title / Titre du dessin

CONCRETE DAM
WINCH RAILS
AND STOPLOGS

Drawn by / Dessiné par KJC	Designed by / Conçu par WSM
Approved by / Approuvé par SB	Drawing Date / Date du dessin MAY 2018
Project manager / Administrateur de projet DAVE NESS	
Contract No. / Numéro du contrat EQ754-162649	Drawing No. / Dessiné No. S012
Project No. / Numéro du projet R.076951.906	Sheet Feuille 1 of 1 du 1