



NOTICE

This documentation has been reviewed by the technical authority and does not contain controlled goods. Disclosure notices and handling instructions originally received with the document shall continue to apply.

AVIS

Cette documentation a été révisée par l'autorité technique et ne contient pas de marchandises contrôlées. Les avis de divulgation et les instructions de manutention reçues originalement doivent continuer de s'appliquer.

Annex E
W0002-180001
22 February 2013

TAILORING SERVICES FOR GGFG AND CGG

FIGURES

FIGURE 1 – GENERIC JACKET - FRONT VIEW

FIGURE 2 – GENERIC JACKET - BACK VIEW

FIGURE 3 – COLLAR / HOOK / TAB

FIGURE 4 – BACK SEAM DIAGRAMS

A: Top to bottom

B: Chest area

C: Waist Area

FIGURE 5 – BACK SEAM DIAGRAMS

D: Skirt Area

E: Chest Waist Area

F: Waist and Skirt Area

FIGURE 6 – SIDE SEAM DIAGRAMS

A: Top to Bottom

B: Chest Area

C: Waist Area

FIGURE 7 – SIDE SEAM DIAGRAMS

D: Skirt Area

E: Chest Waist Area

F: Waist and Skirt Area

FIGURE 8 – SLEEVE SLASH “CGG”

FIGURE 9 – SLEEVE SLASH “GGFG”

FIGURE 10 – BACK SLASH “GGFG”

FIGURE 11 – BACK SLASH “CGG”

FIGURE 12 – PARTIAL VIEW OF CUFF AND SLEEVE SHOWING SASH

FIGURE 1: GENERIC JACKET - FRONT VIEW

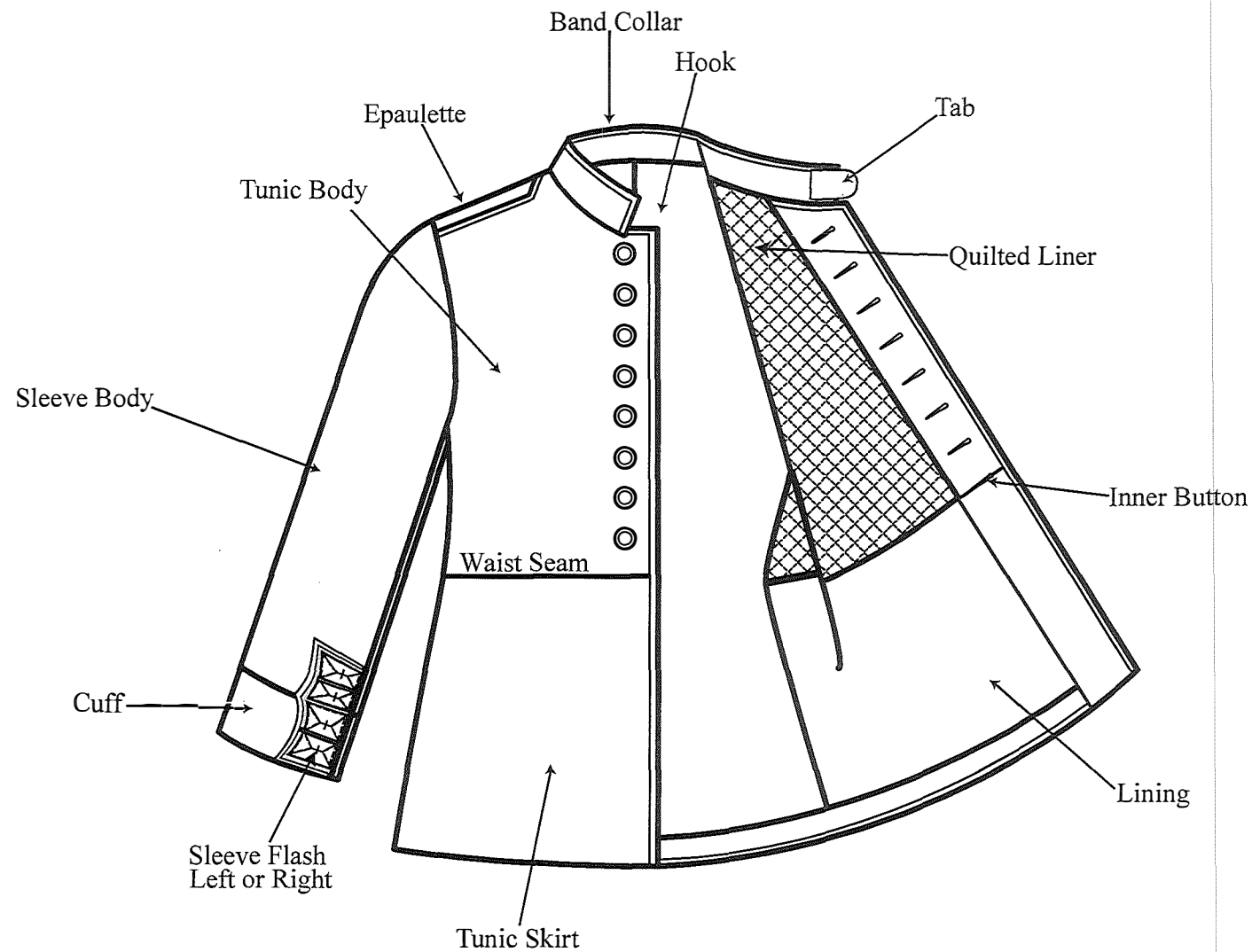


FIGURE 2: GENERIC JACKET - BACK VIEW

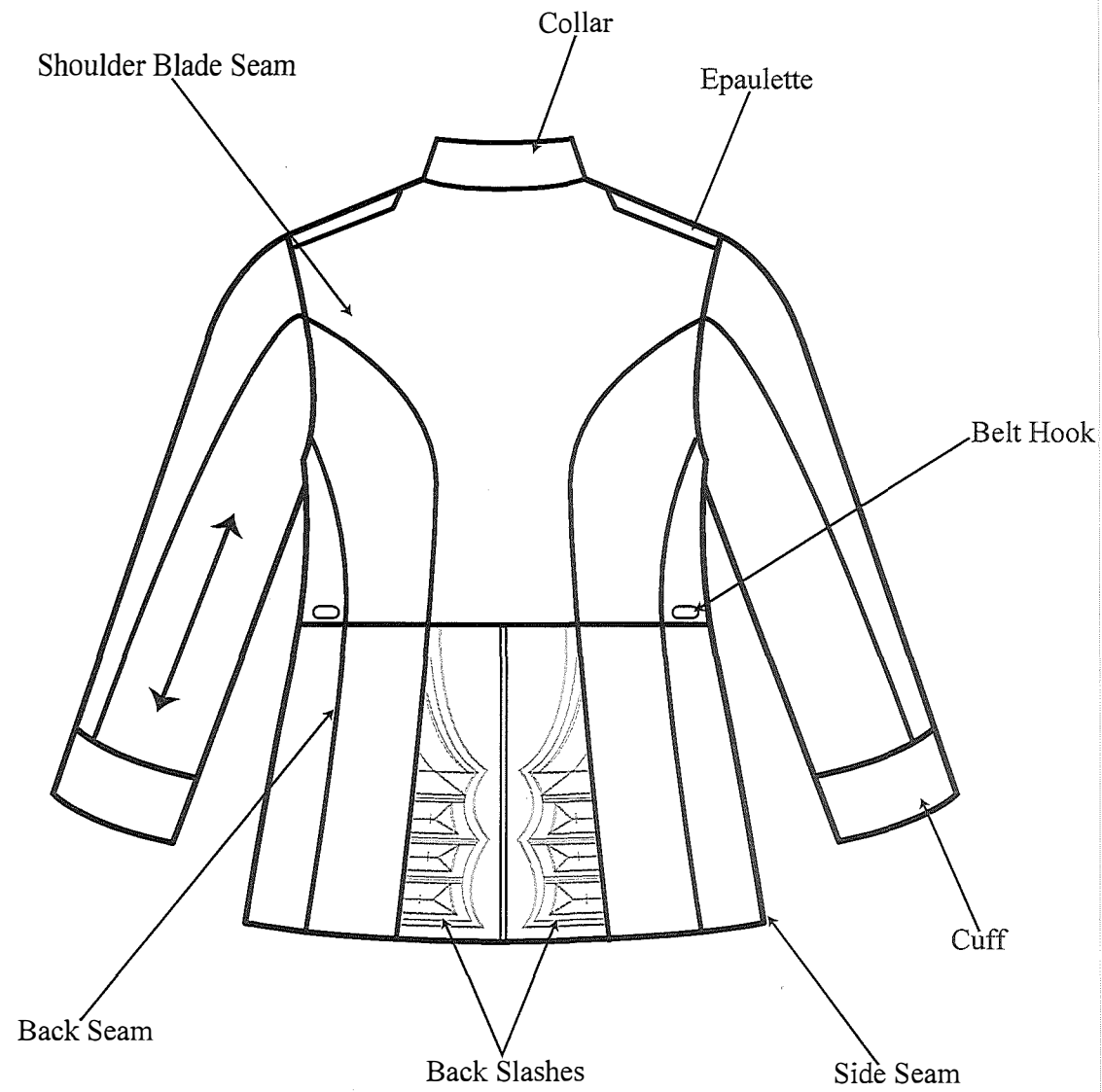
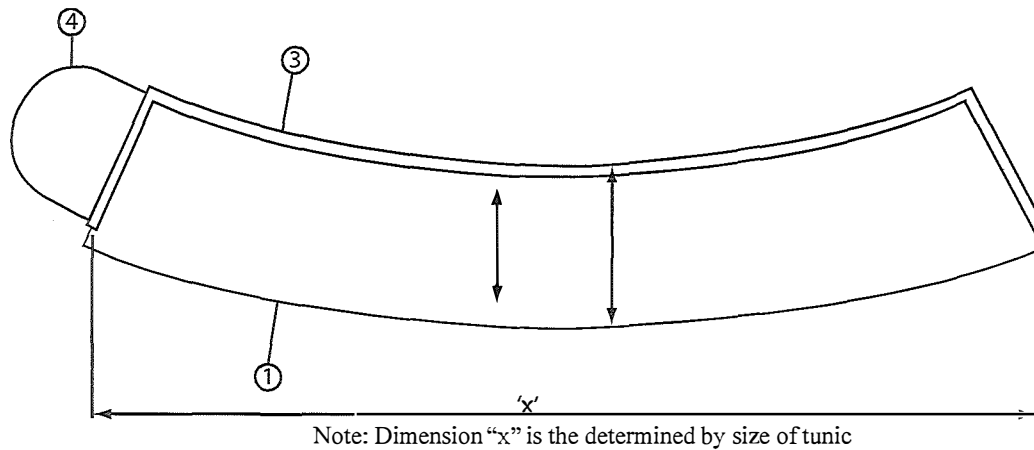
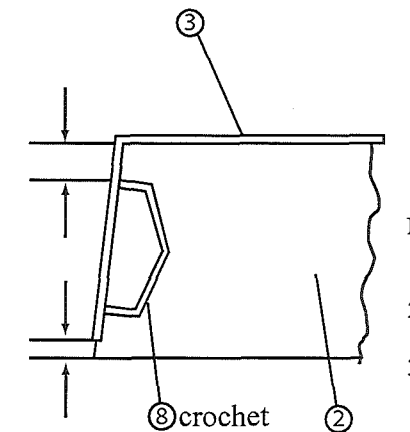
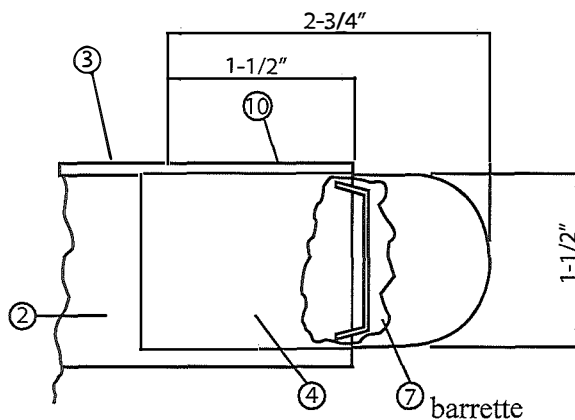


FIGURE 3: COLLAR / HOOK / TAB

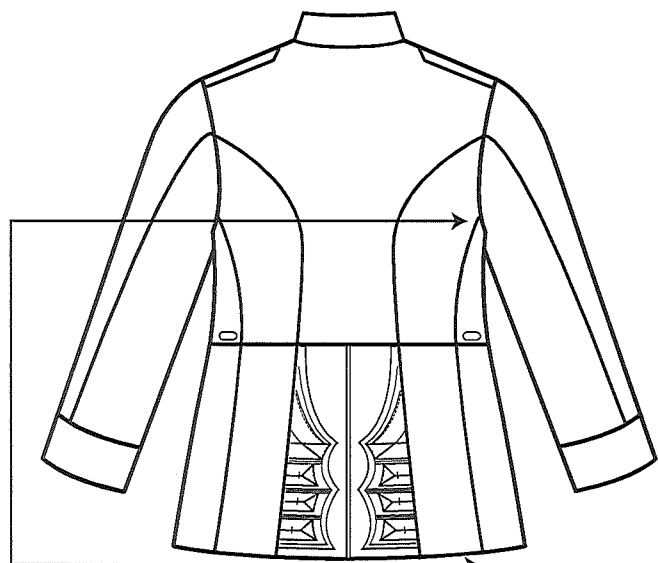


ARTICLE NO	NOMENCLATURE	DESCRIPTION	SPECIFICATION
1	BODY	CLOTH, WORSTED, SERGE NAVY BLUE	D-80-001-012/SF/001
2	LINING	CLOTH, MELTON WOOL, WHITE	D-80-001-042/SF/001
3	PIPING	CLOTH, MELTON WOOL, WHITE	D-80-001-042/SF/001
4	CURTAIN COLLAR HOOK		COMMERCIAL
5	INTERLINING	OUTER PLY MYLAR	COMMERCIAL
6	COLLAR	INNER PLY BUCKRAM	COMMERCIAL
7	BAR, COLLAR		COMMERCIAL
8	HOOK, COLLAR		COMMERCIAL
9	THREAD SEAMS AND STITCHES	SIZE 3/125 TYPE 2 OU SIZE 75 TYPE 2	PSNL-9-3-1 4-GP-131
10	THREAD, FILLING		

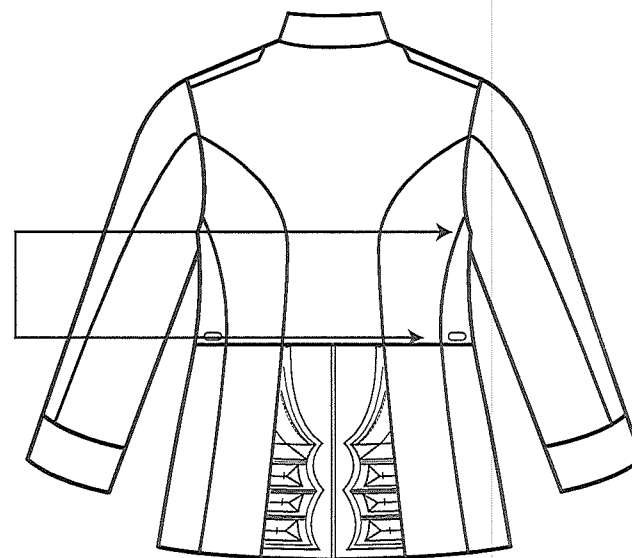


- Note:
- For components & material of components not specified , see applicable specification
 - Sewing - unless otherwise specified:
All stitching shall be 1/16 +/- 1/ from edge.
 - ↔ Denotes direction of warp

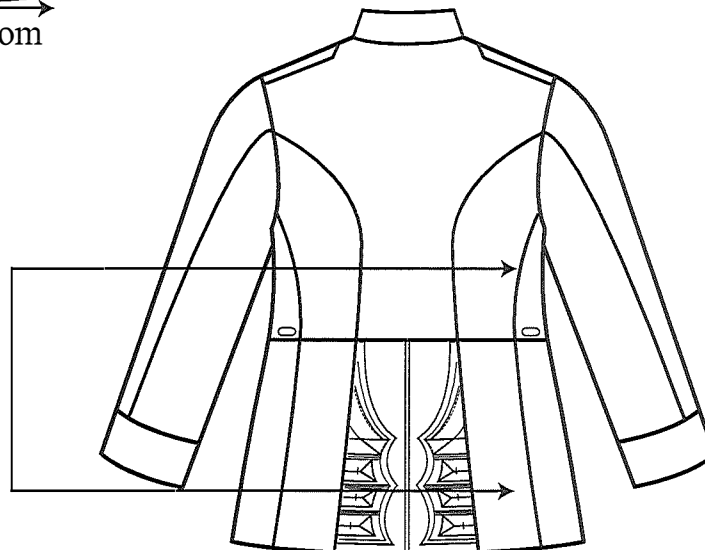
FIGURE 4: BACK SEAM DIAGRAMS



A: Top to bottom

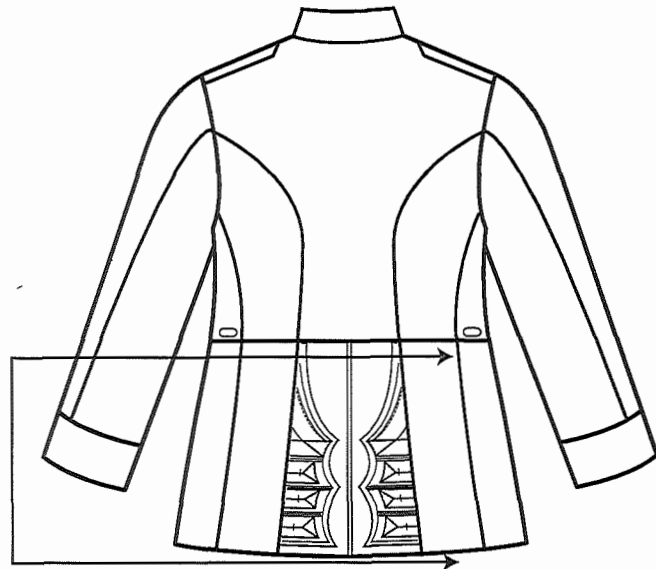


B: Chest area

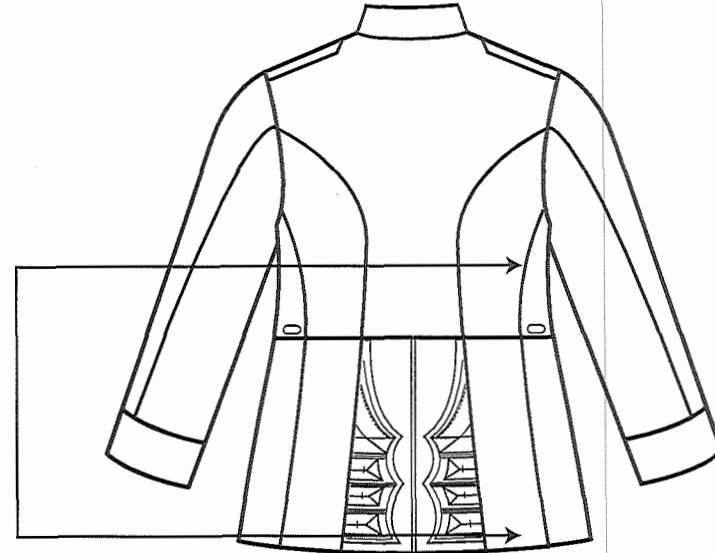


C: Waist Area

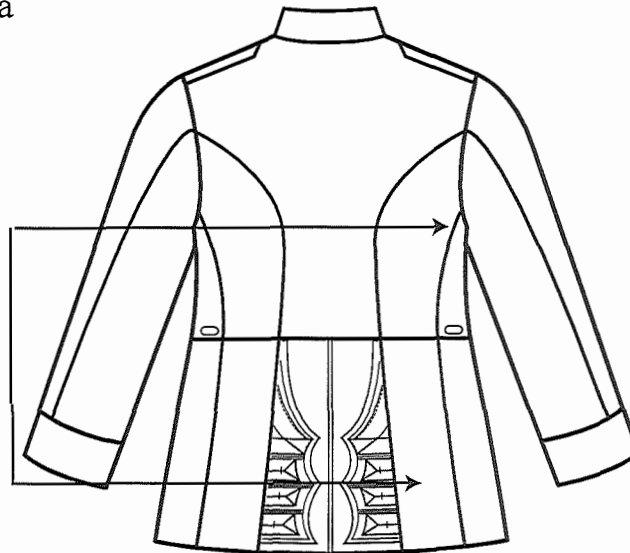
FIGURE 5: BACK SEAM DIAGRAMS



D: Skirt Area



E: Chest Waist Area



F: Waist and Skirt Area

FIGURE 6: SIDE SEAM DIAGRAMS

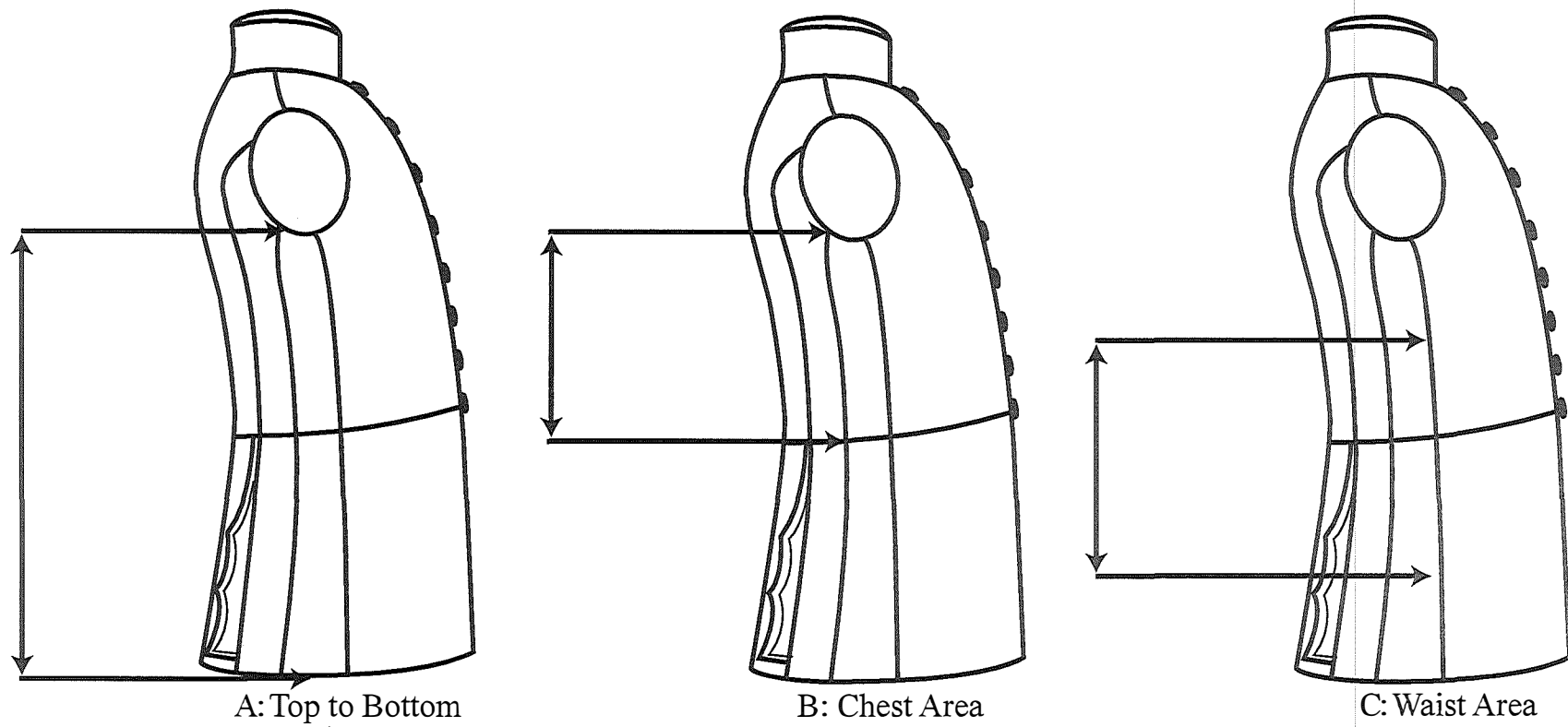
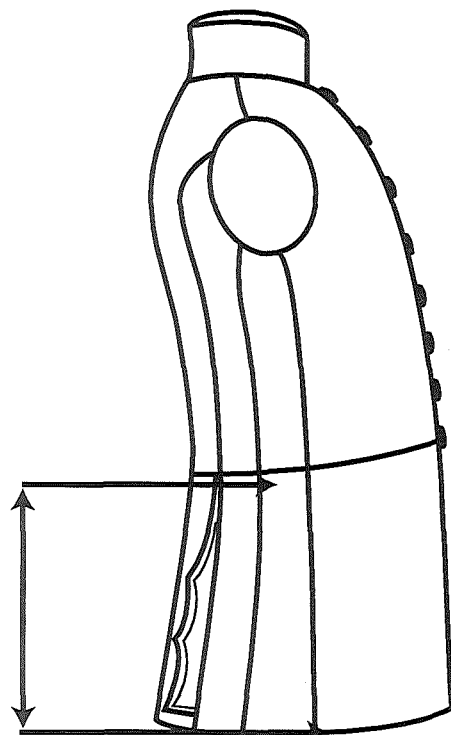
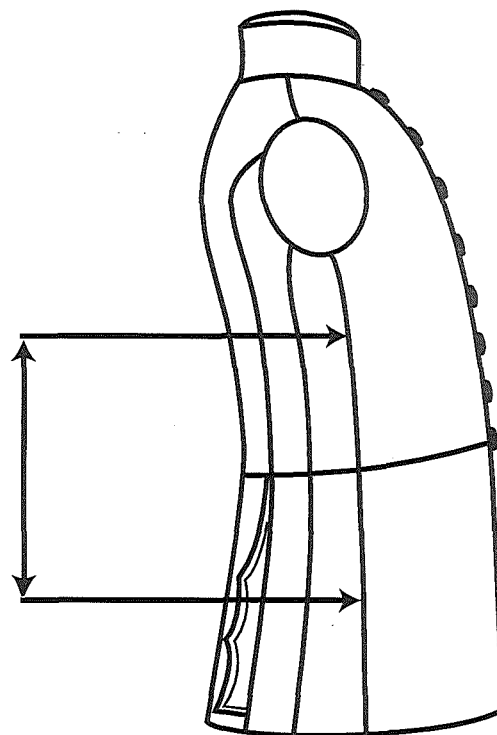


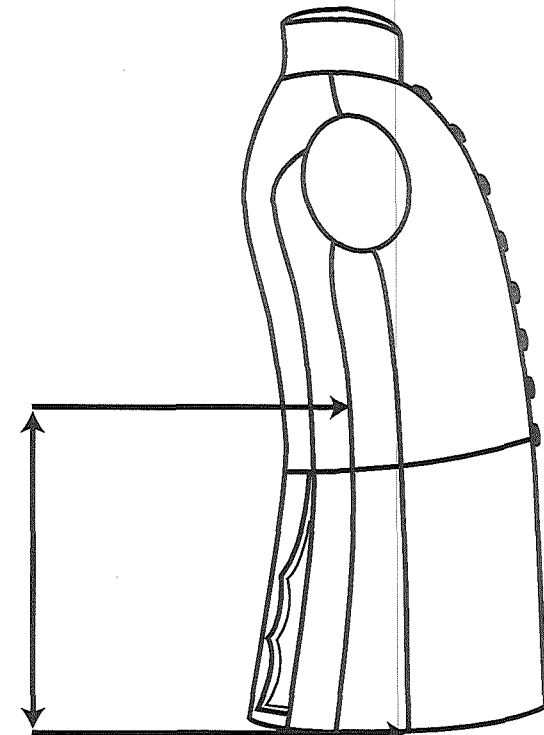
FIGURE 7: SIDE SEAM DIAGRAMS



D: Skirt Area



E: Chest Waist Area



F: Waist and Skirt Area

FIGURE 8: SLEEVE SLASH “CGG”

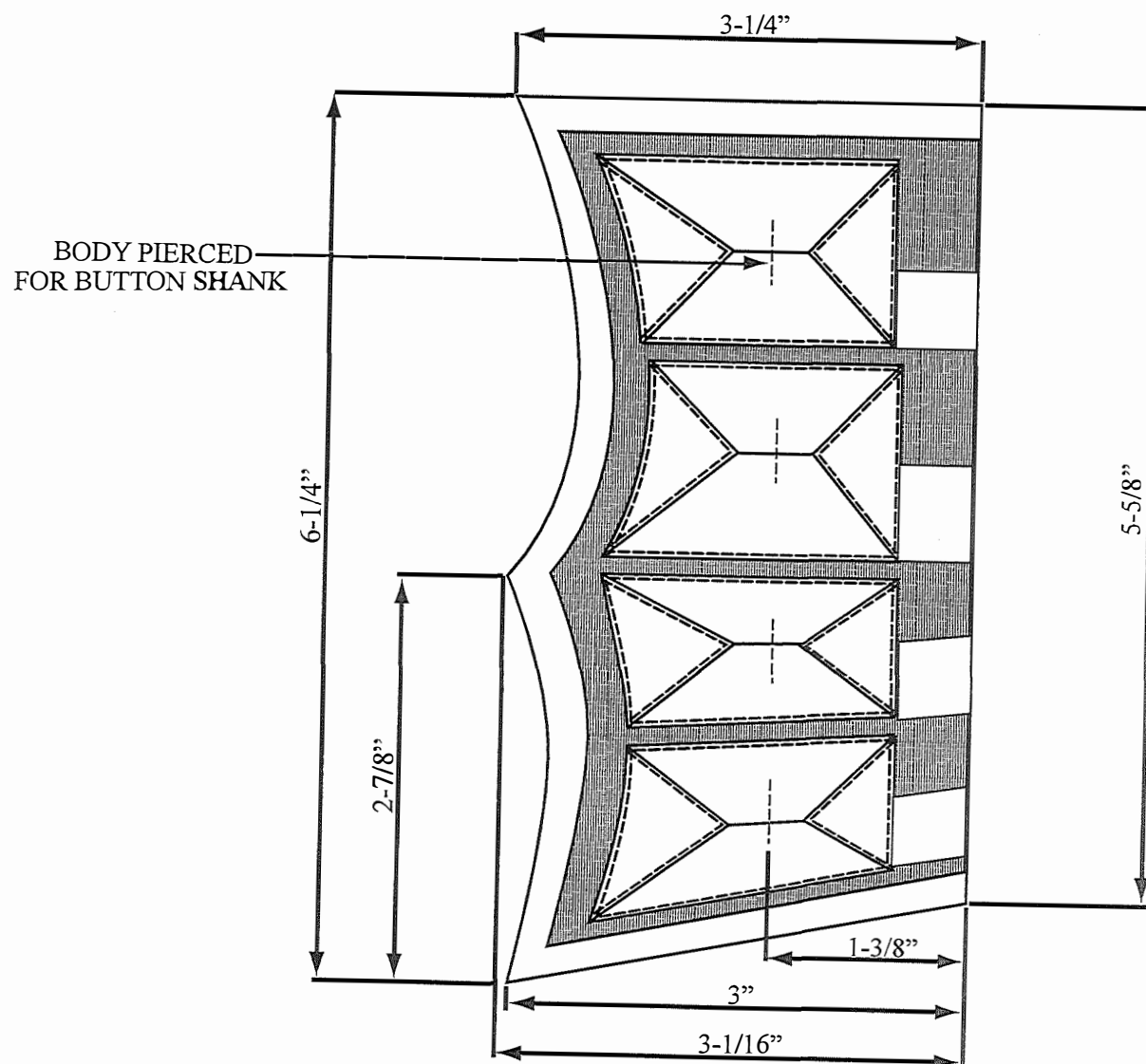


FIGURE 9: SLEEVE SLASH "GGFG"

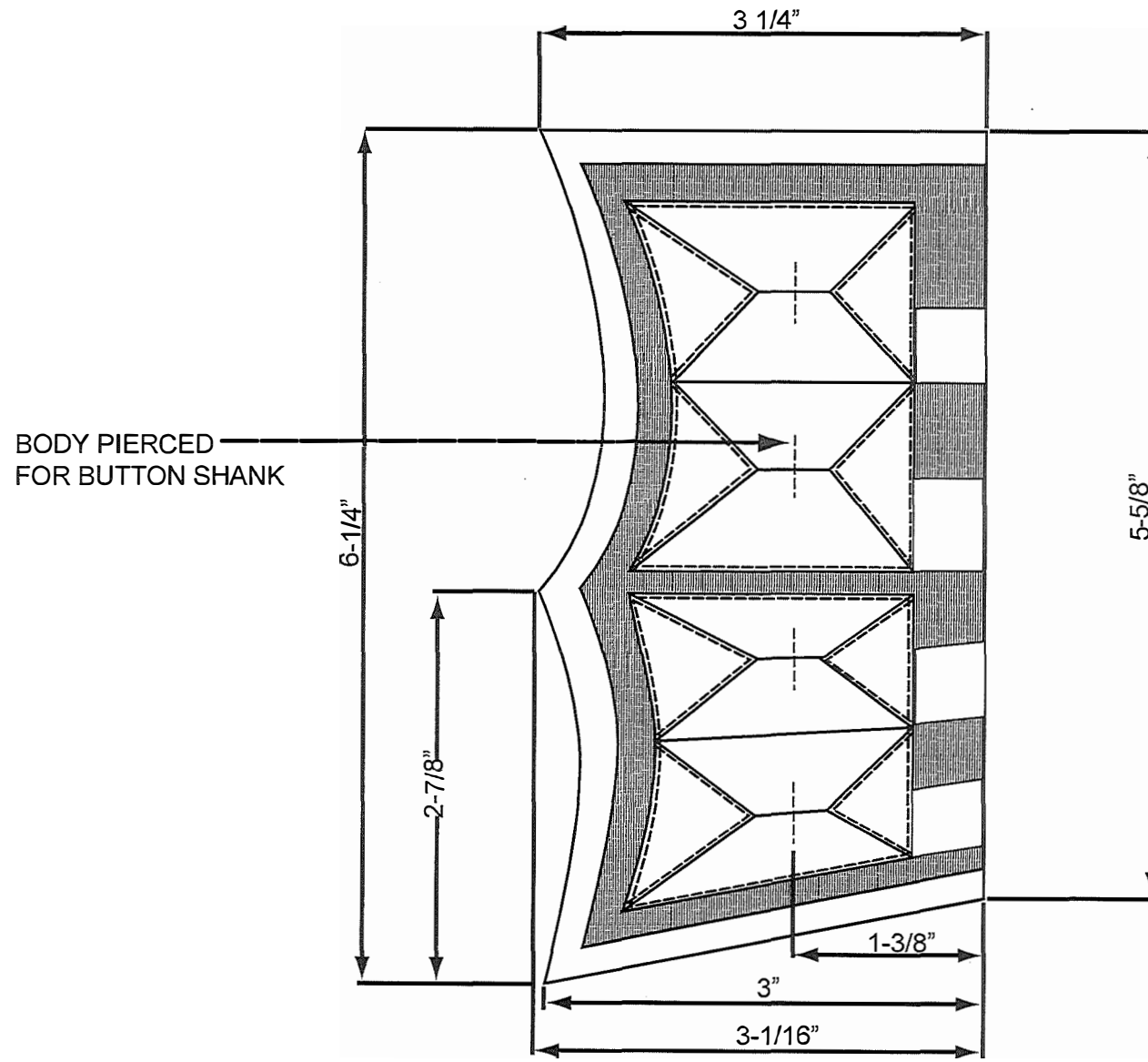


FIGURE 10: BACK SLASH “GGFG”

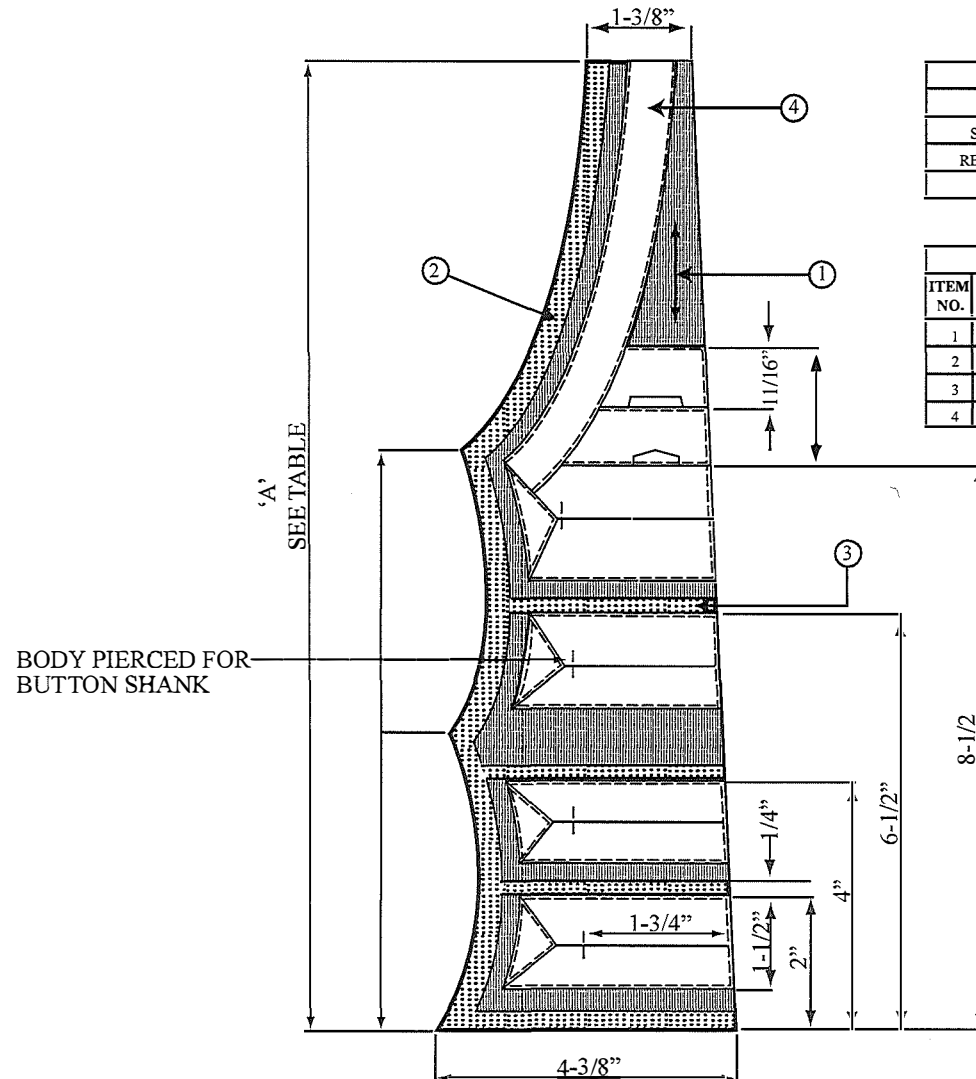


TABLE 1	
SIZE	DIMENSION "A"
SHORT	13-3/8"
REGULAR	13-3/4"
TALL	14-5/8"

TABLE 2			
ITEM NO.	NOMENCLATURE	DESCRIPTION	SPECIFICATION
1	BODY	CLOTH, SERGE, WOOL, SCARLET	4-GP-22M
2	PIPING	CLOTH, MELTON, WOOL, NAVY BLUE	D-80-001-042/SF-001
3	STRIP	CLOTH, MELTON, WOOL, NAVY BLUE	D-80-001-042/SF-001
4	LACE	COTTON, TWILL TAPE, WHITE, 3/4"	COMMERCIAL

FIGURE 11 : BACK SLASH “CGG”

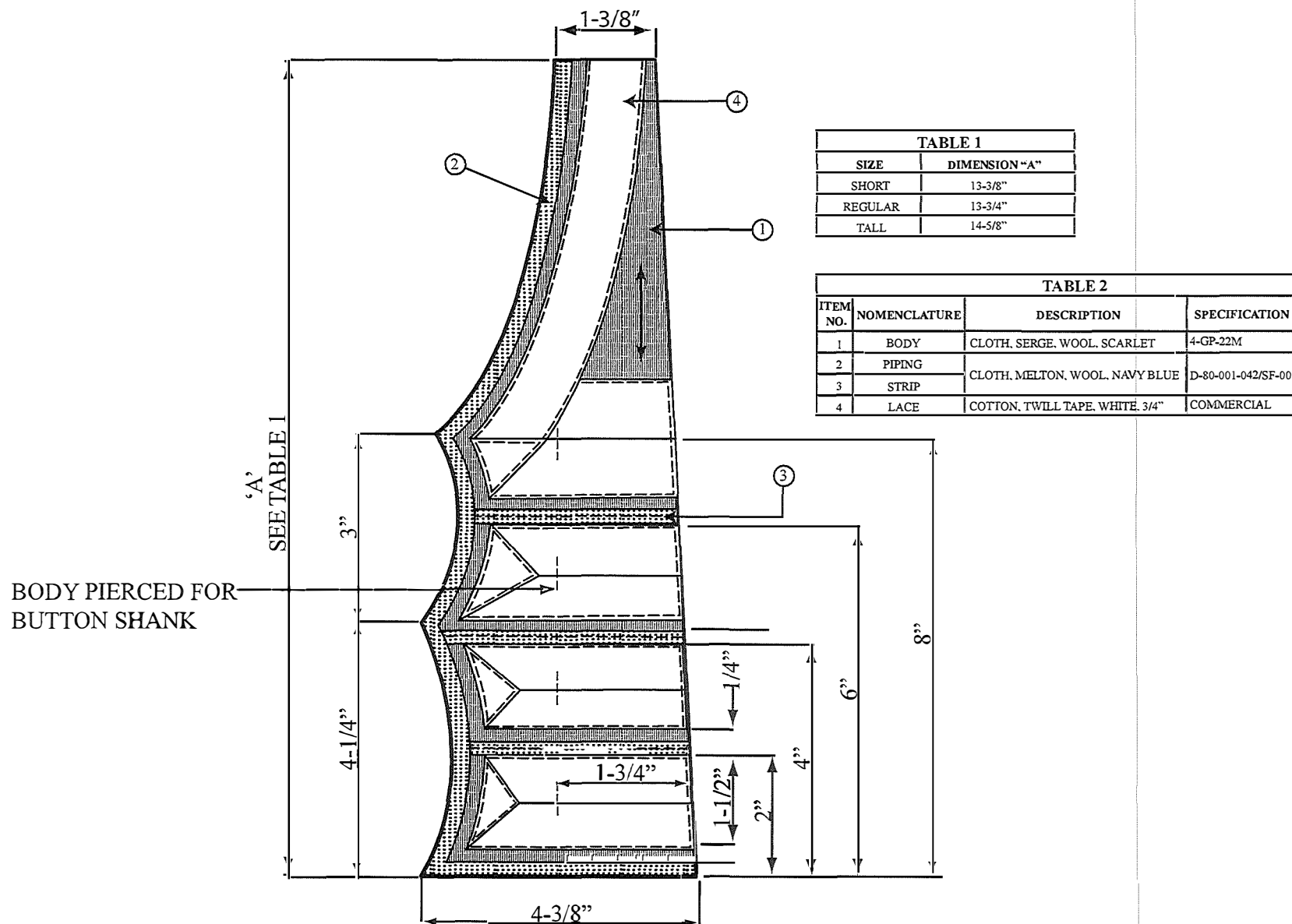
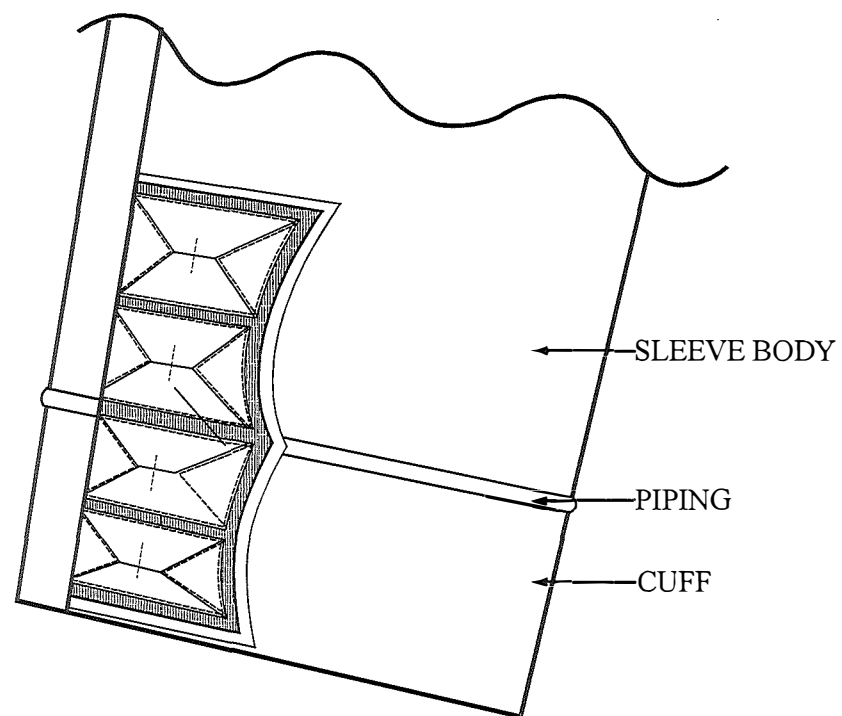
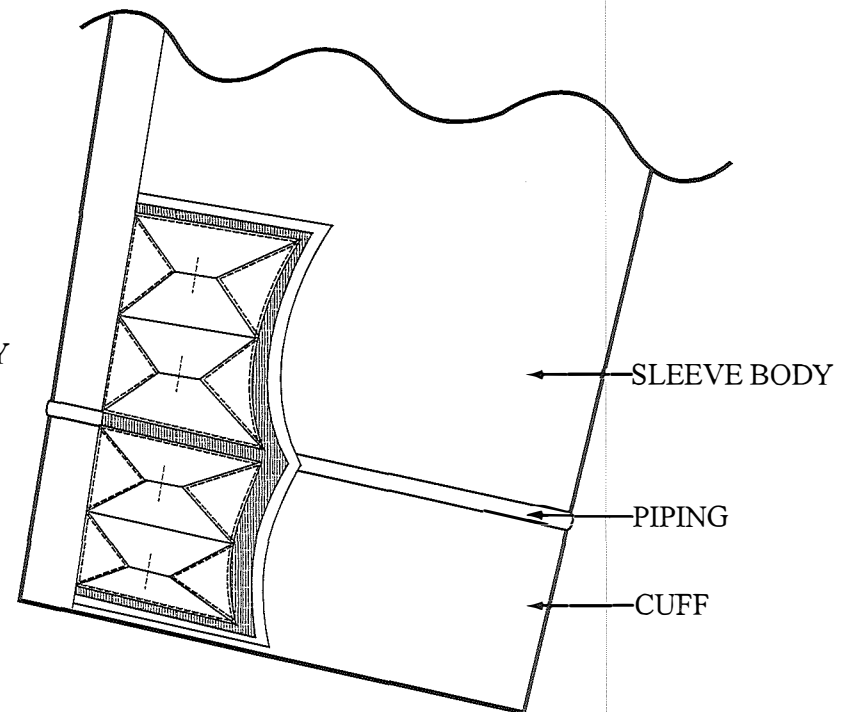


FIGURE 12: PARTIAL VIEW OF CUFF AND SLEEVE SHOWING SASH



SLEEVE SLASH CGG



SLEEVE SLASH GGFG