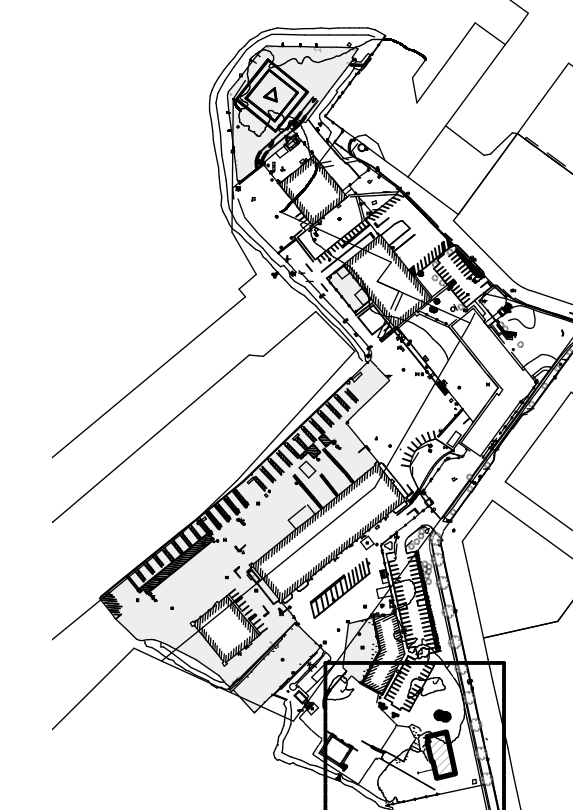
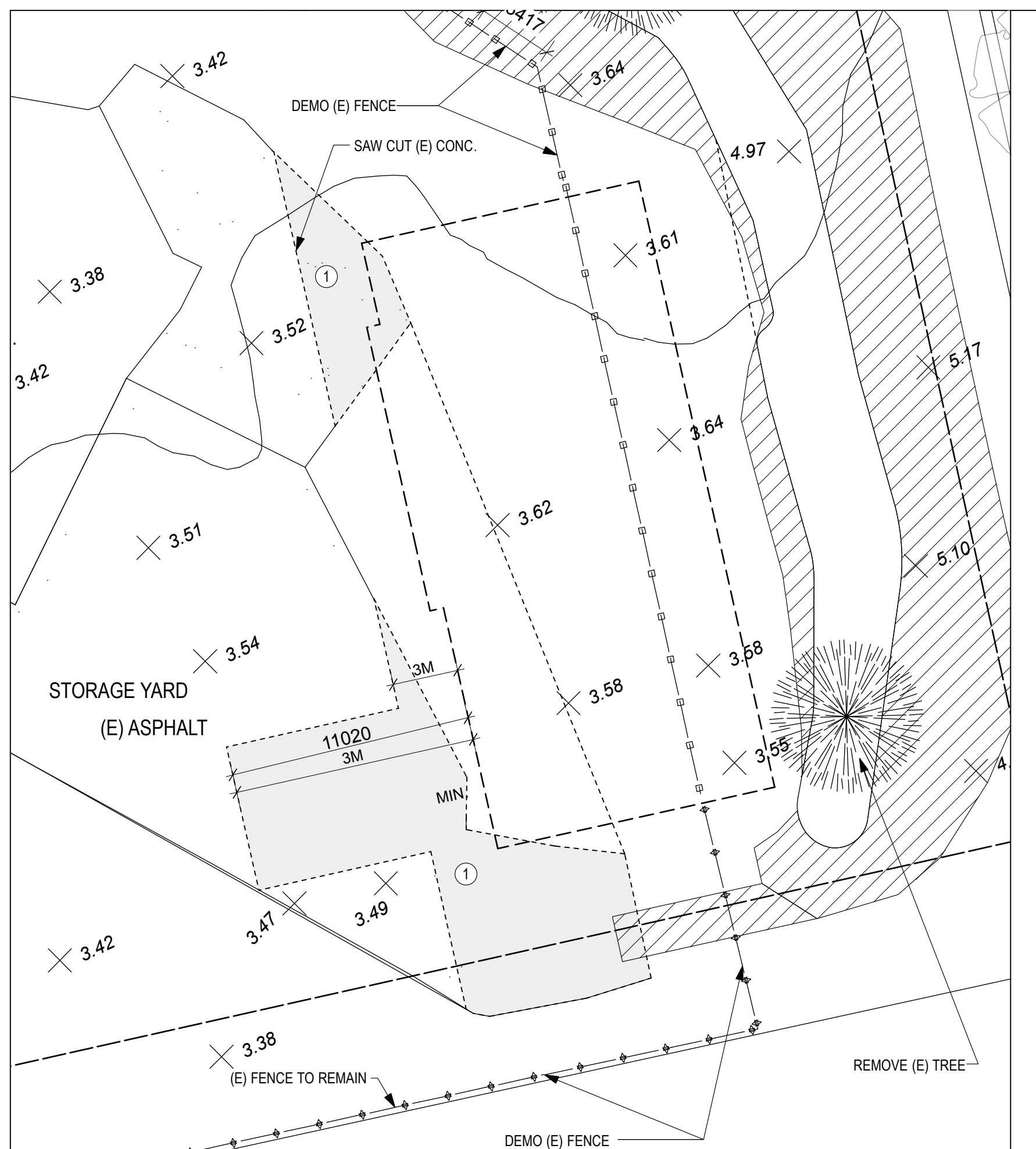
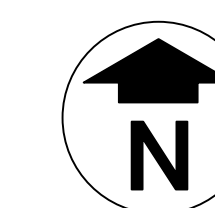


NOTES:

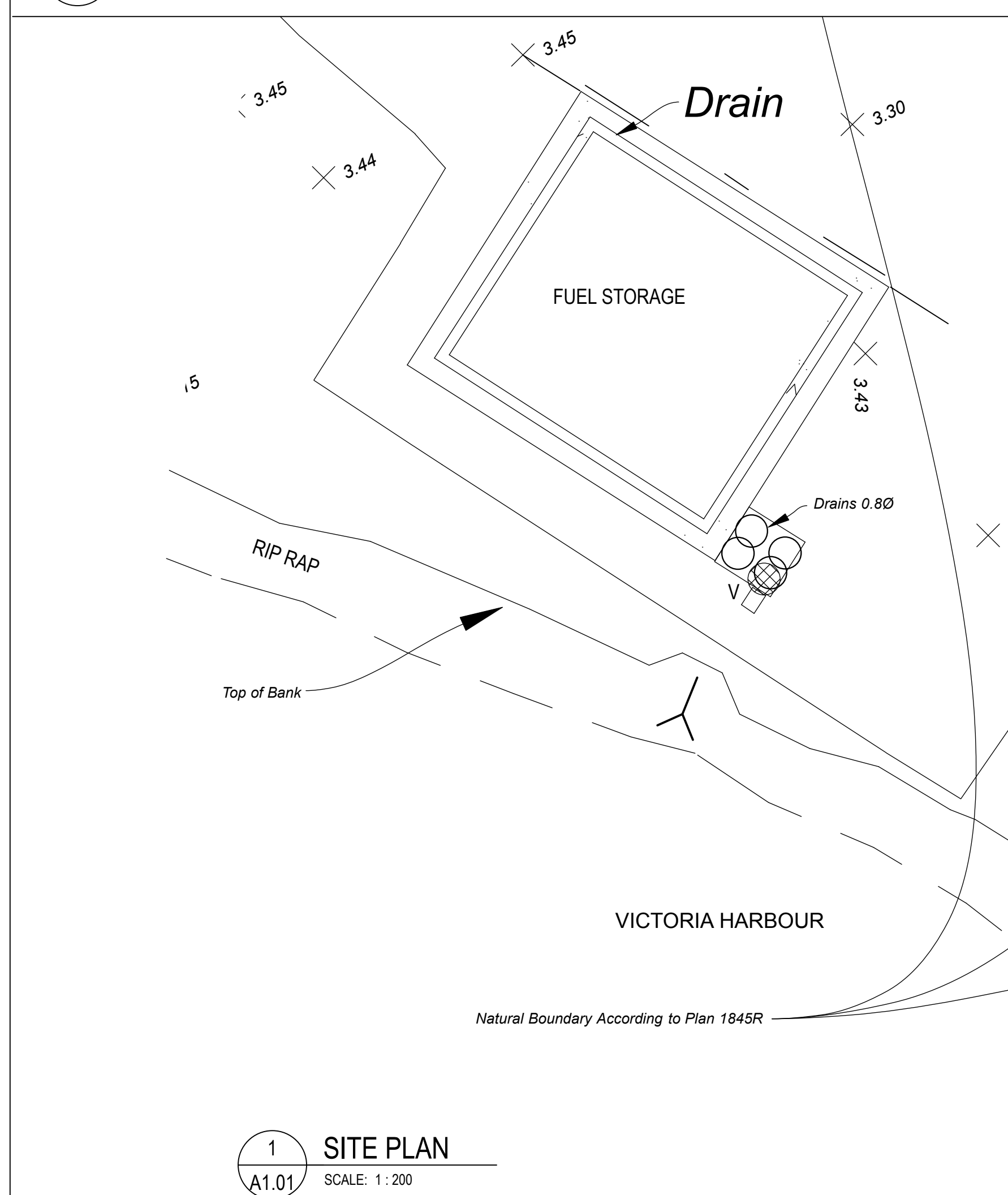
- ① REMOVE (E) ASPHALT AS SHOWN AND REQUIRED FOR WORK
- ② (N) CONC. WALK BROOM FINISH REVEALS AT 1200 O.C.
- ③ REMOVE PORTION OF BERM AND TAPER EDGE TO MATCH (E) AT (N) PATH. SEED ALL DISTURBED AREAS
- ④ CONC. PAD AND CURB AT GENERATOR POSITIVE SLOPE TO DRAIN
- ⑤ REMOVE (E) ASPHALT AS SHOWN AND REQUIRED FOR WORK
- ⑥ (N) ASPHALT PAVING
- ⑦ (N) CONCRETE PAVING
125mm CONC. SLAB
150 mm COMPACTED GRANULAR FILL
UNDISTURBED SOIL
- ⑧ (N) 100mm WIDE PAINTED LINES AND TEXT
TEXT ARIAL WHITE - HEIGHT TO BE MIN. 300mm
- ⑨ (N) 127 CONC. SKIRT
ON 150 COMPACTED GRANULAR FILL



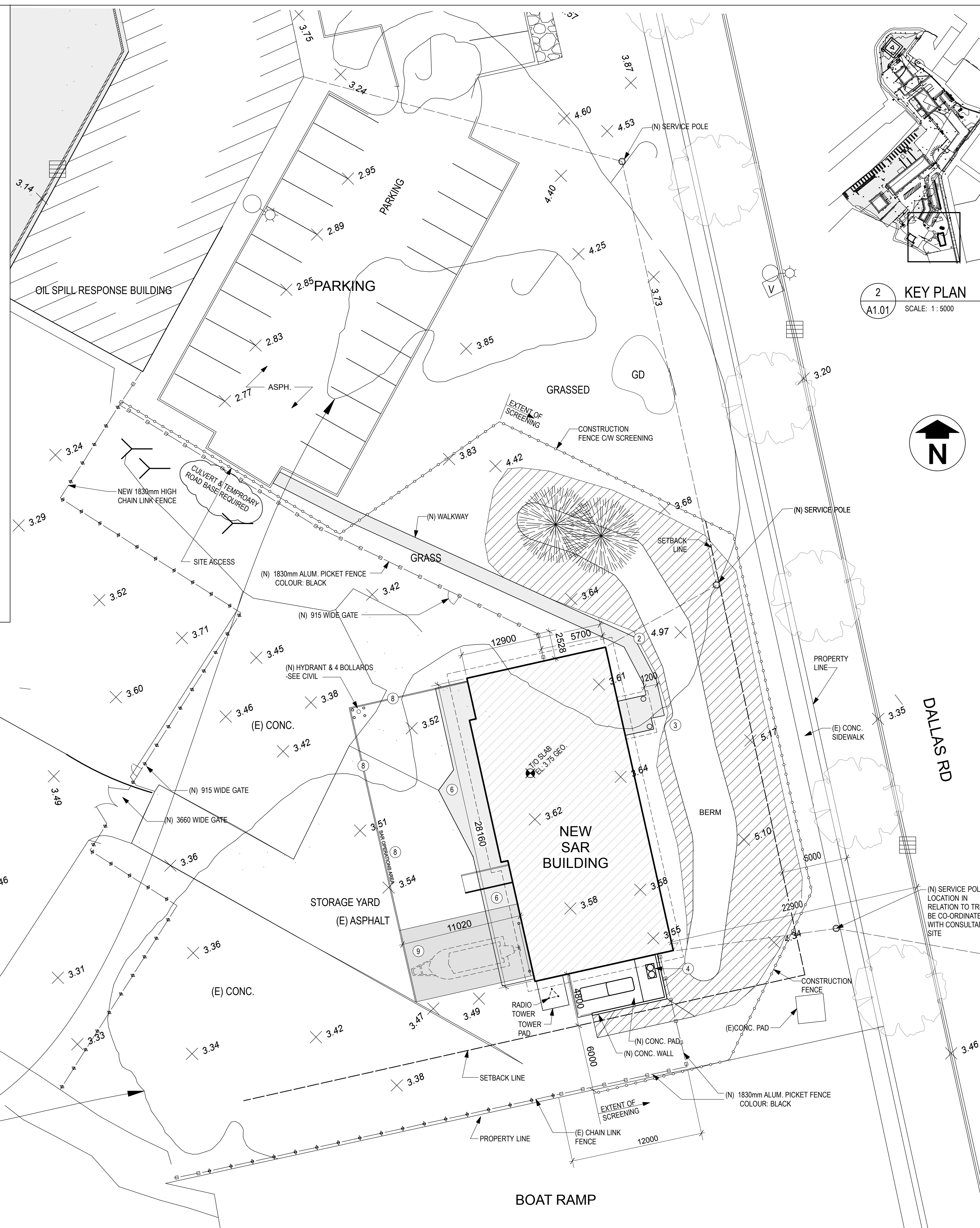
2 KEY PLAN
A1.01 SCALE: 1:5000



3 SITE DEMO PLAN
A1.01 SCALE: 1:200



1 SITE PLAN
A1.01 SCALE: 1:200



6	ADDENDUM 1	2019-02-19
5	TENDER	2018-12-14
4	100% Review	2018-10-30
3	95% Review	2018-10-11
2	60% Review	2018-07-27
1	Schematic Review	2018-06-27
	Description/Description	Date/Date

**FISHERIES AND OCEANS,
REAL PROPERTY,
SAFETY AND SECURITY**

VANCOUVER, BC
200-401 BURRARD ST.

Project title/Titre du projet

VICTORIA SAR STATION

25 Huron Street, Victoria, B.C.

Consultant Signature Box Only

Designed by/Concept par
RH

Drawn by/Dessiné par
DS

PWGSC Project Manager/Administrateur de Projets TPSGC
--

PWGSC Regional Manager, Architectural and Engineering Services/
Gestionnaire régionale, Services d'architecture et de génie, TPSGC
--

Drawing title/Titre du dessin

SITE PLAN

Project No./No. du projet	Sheet/ Feuille	Revision no./ La Révision no.
2017567	A1.01	