

# NATIONAL RESEARCH COUNCIL CANADA MONTREAL ROAD CAMPUS

## M-58, ROOF REPLACEMENT AREA '1', '5' and '8'

### DRAWING LIST

COVER SHEET

### ARCHITECTURAL

DEMOLITION AND CONSTRUCTION ROOF PLANS

TYPICAL ROOF REPLACEMENT DETAILS

TYPICAL ROOF REPLACEMENT DETAILS

ROOF CROSS-SECTIONS AND TYPICAL ROOF REPLACEMENT DETAILS

### MECHANICAL

ROOFTOP A/C AND EXHAUST FAN EQUIPMENT REMOVAL AND DUCTWORK MODIFICATIONS

### DRAWING No.

5398-CS1

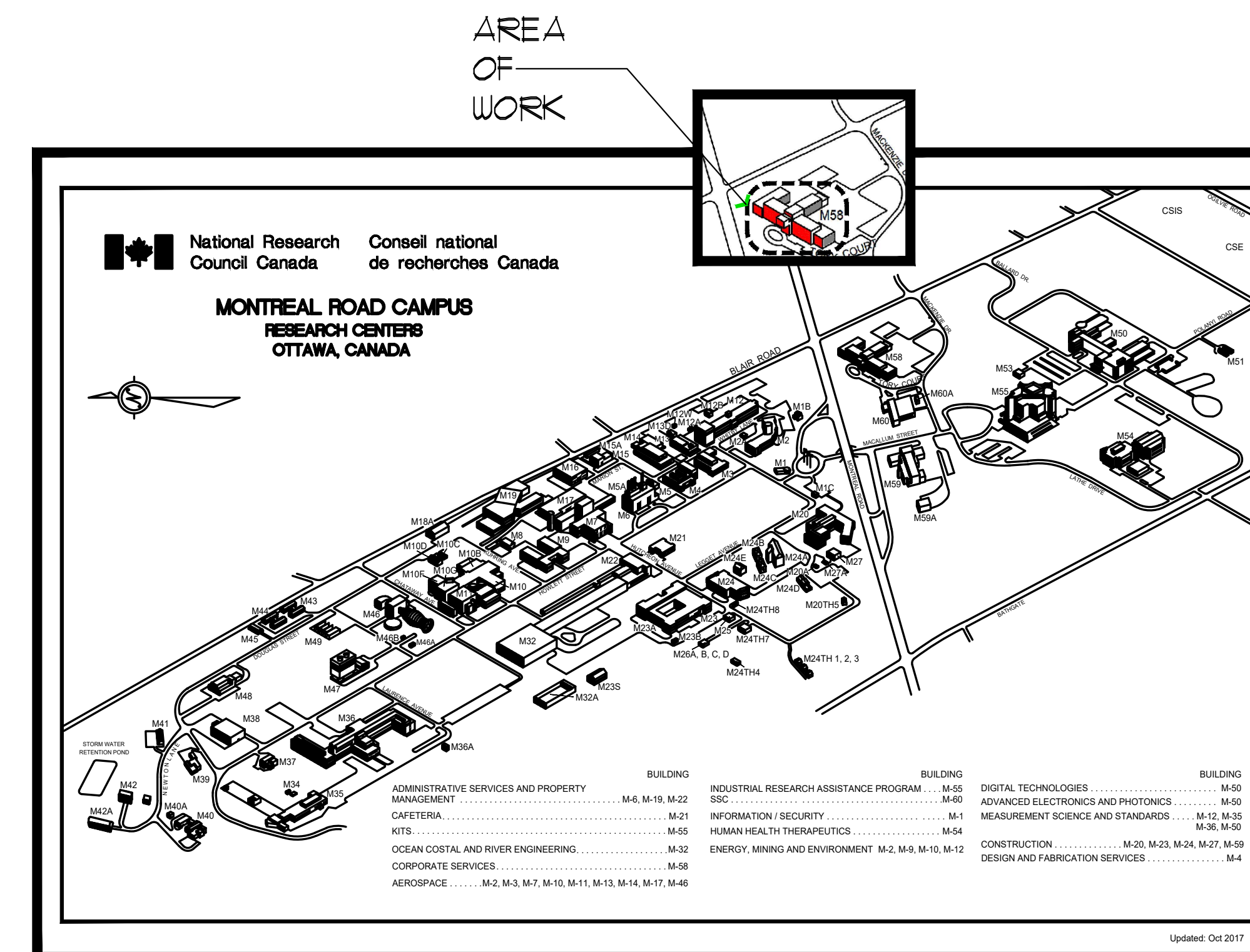
5398-A01

5398-A02

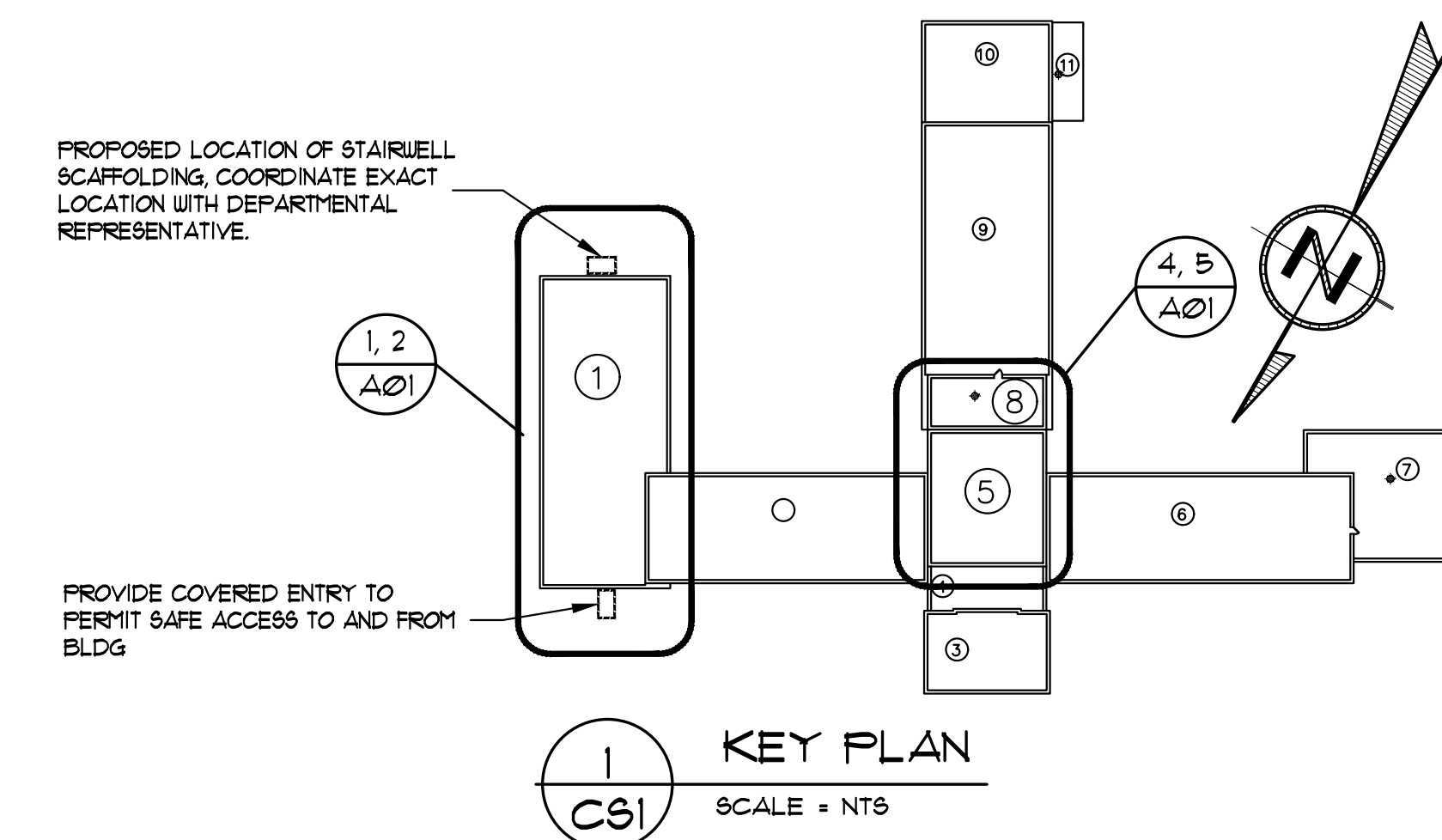
5398-A03

5398-A04

5398-M01



ABBREVIATIONS			
AUB	ALUMINUM WALL BASE	O.C.	ON CENTER
ACP	ACOUSTIC CEILING PANEL	PS	PRESSED STEEL
AF	ABOVE FINISHED FLOOR	PT	PAINT
CONC	CONCRETE	PCT	PAINTED CONCRETE TOPPING
CPT	CARPET	REV	REVERSE
CMU	CONCRETE MASONRY UNIT	RUB	RESILIENT WALL BASE
CAW	COMPLETE WITH	SIM	SIMILAR
DMNT	DEMOUNTABLE	SP	SPRINKLER HEAD
DWG	DRAWING	U/S	UNDERSIDE
(E)	EXISTING	TYP	TYPICAL
FFL	FINISHED FLOOR LEVEL		
GB	GYPHUM BOARD		
HM	HOLLOW METAL		
NTS	NOT TO SCALE		



### GENERAL NOTES

- CONTRACTORS TO CHECK AND VERIFY ALL DIMENSIONS ON SITE PRIOR TO DEMOLITION OR CONSTRUCTION AND REPORT ANY ERRORS OR OMISSIONS TO DEPARTMENTAL REPRESENTATIVE.
- CONTRACTORS MUST VISIT THE SITE 4 FULLY FAMILIARIZE THEMSELVES WITH THE SCOPE OF THE WORK.
- PREVENT THE SPREAD OF DUST 4 DEBRIS BEYOND THE WORK AREA AND CLEAN ALL SURFACES AT COMPLETION.
- MAKE GOOD ALL SURFACES AFFECTED BY THIS WORK.
- COORDINATE ALL SHUTDOWNS WITH THE DEPARTMENTAL REPRESENTATIVE.
- TEMPORARILY REMOVE AND SUPPORT ELECTRICAL BOXES AND CONDUIT RUNNING ALONG PARAPETS AND ON ROOF SURFACES. REINSTATE UPON COMPLETION AND RE-SECURED AS REQUIRED.
- PROVIDE ALL LABOUR AND MATERIAL REQUIRED TO FORM A COMPLETE FUNCTIONAL SYSTEM AS DESCRIBED ON DRAWINGS.

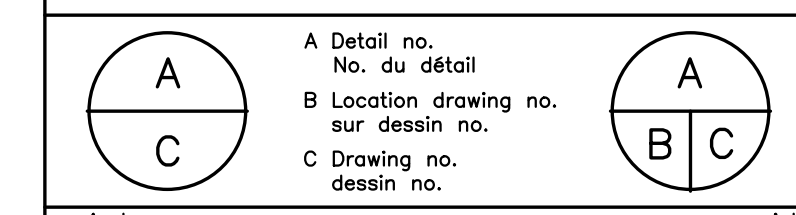
### SYMBOL LEGEND (for project)

- NOTE NUMBER
- 000 ROOM NUMBER
- W-0 WINDOW TYPE NUMBER
- 0 A00 DETAIL NUMBER
- 0 A00 ELEVATION NUMBER
- 0 A00 SECTION NUMBER
- ELEV. 100.00 NEW OR EXIST. ELEVATION OR LEVEL

### KEY PLAN



- Verify all dimensions and site conditions and be responsible for same.
- Vérifier toutes les dimensions et l'état des lieux et en assumer la responsabilité.



project: M-58, ROOF REPLACEMENT AREA '1', '5' and '8'

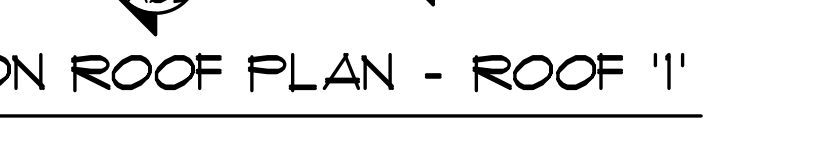
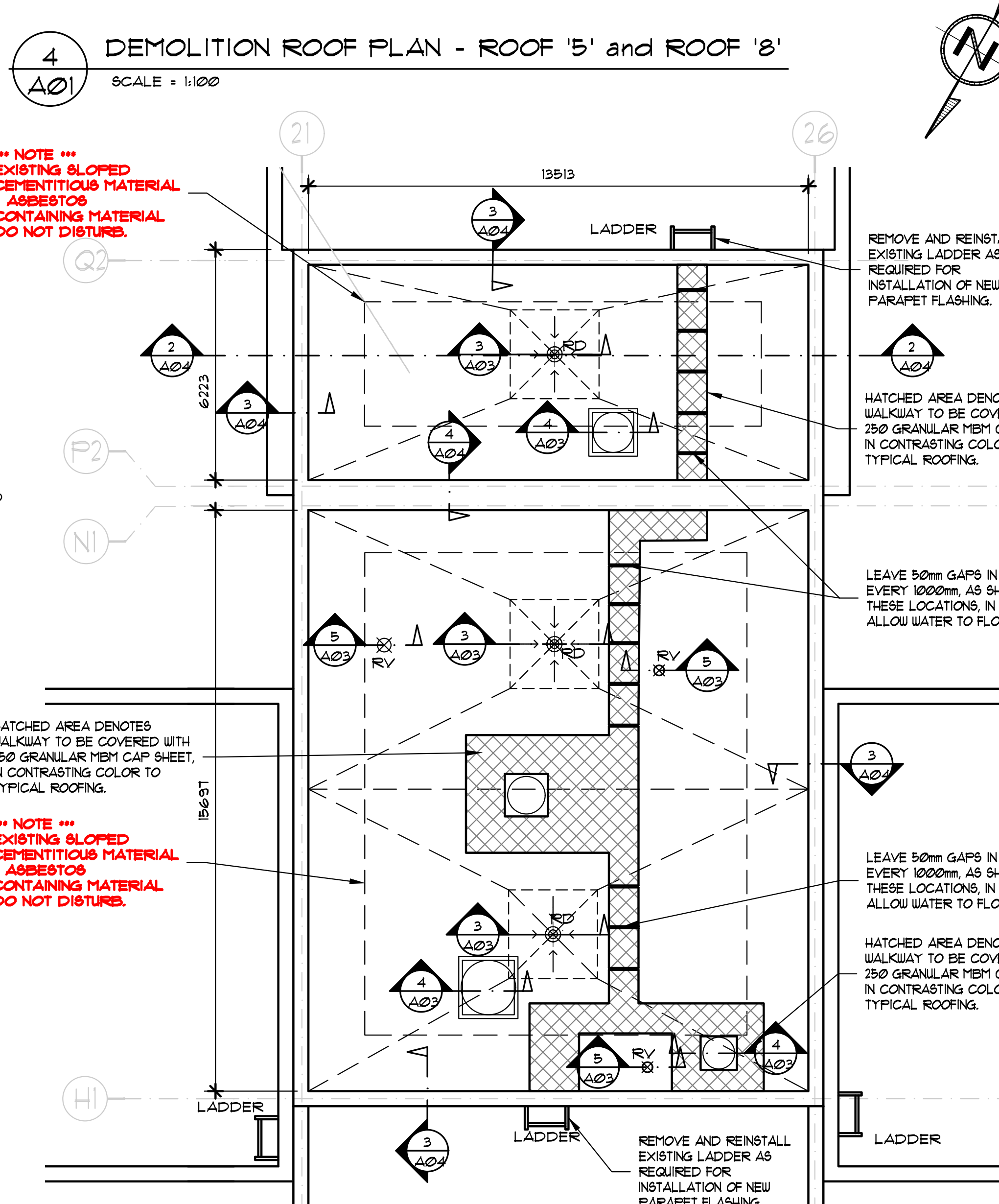
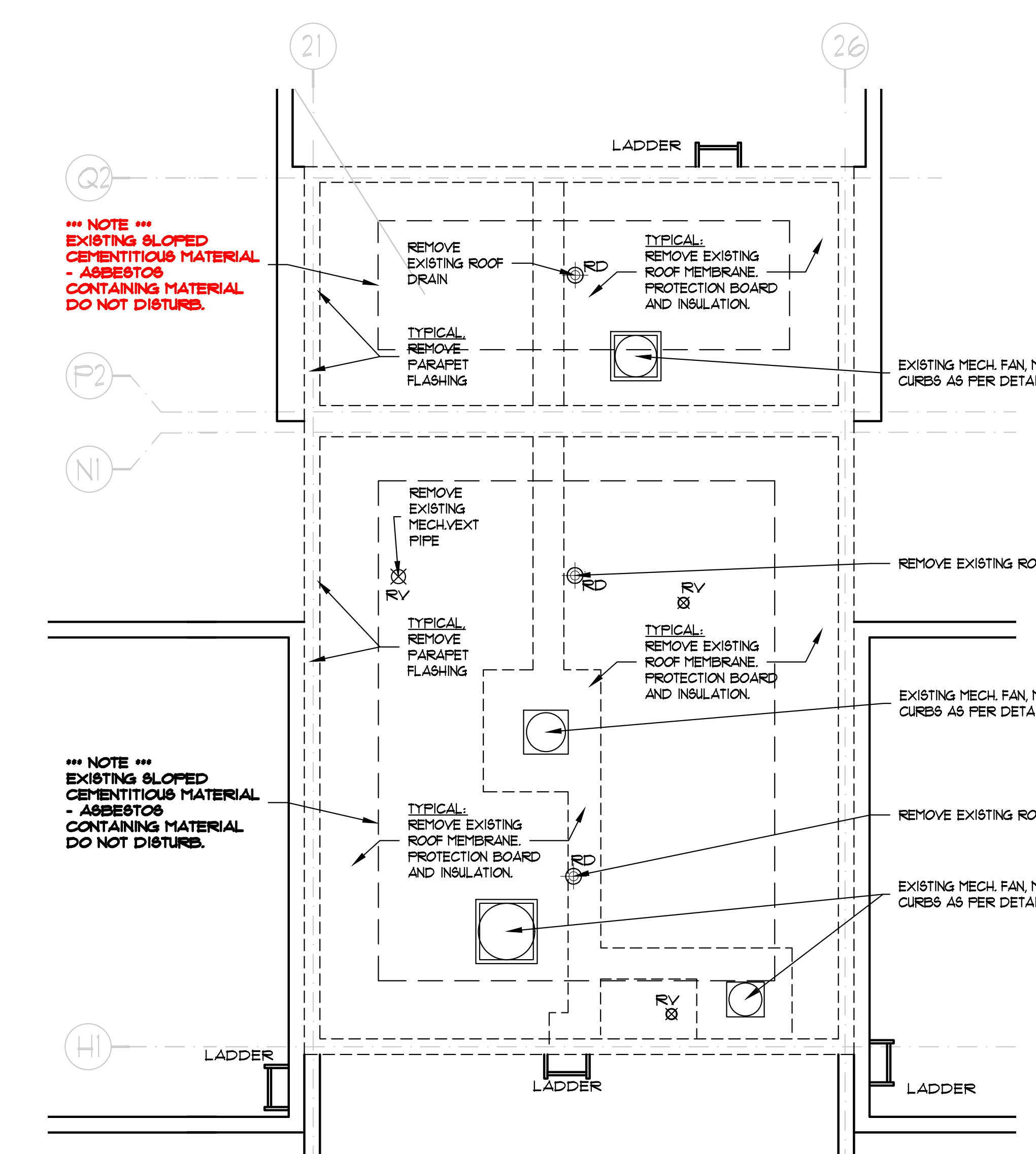
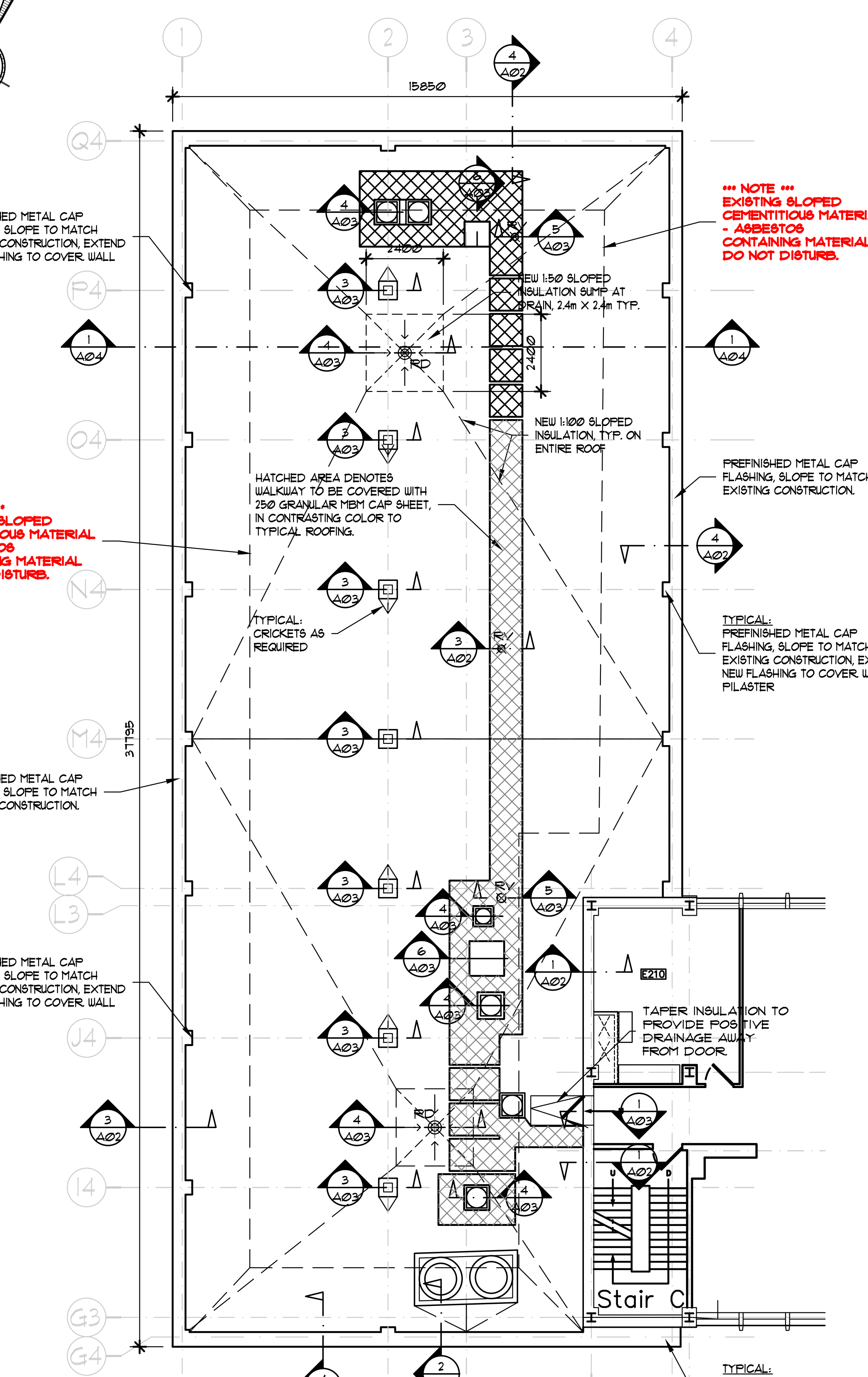
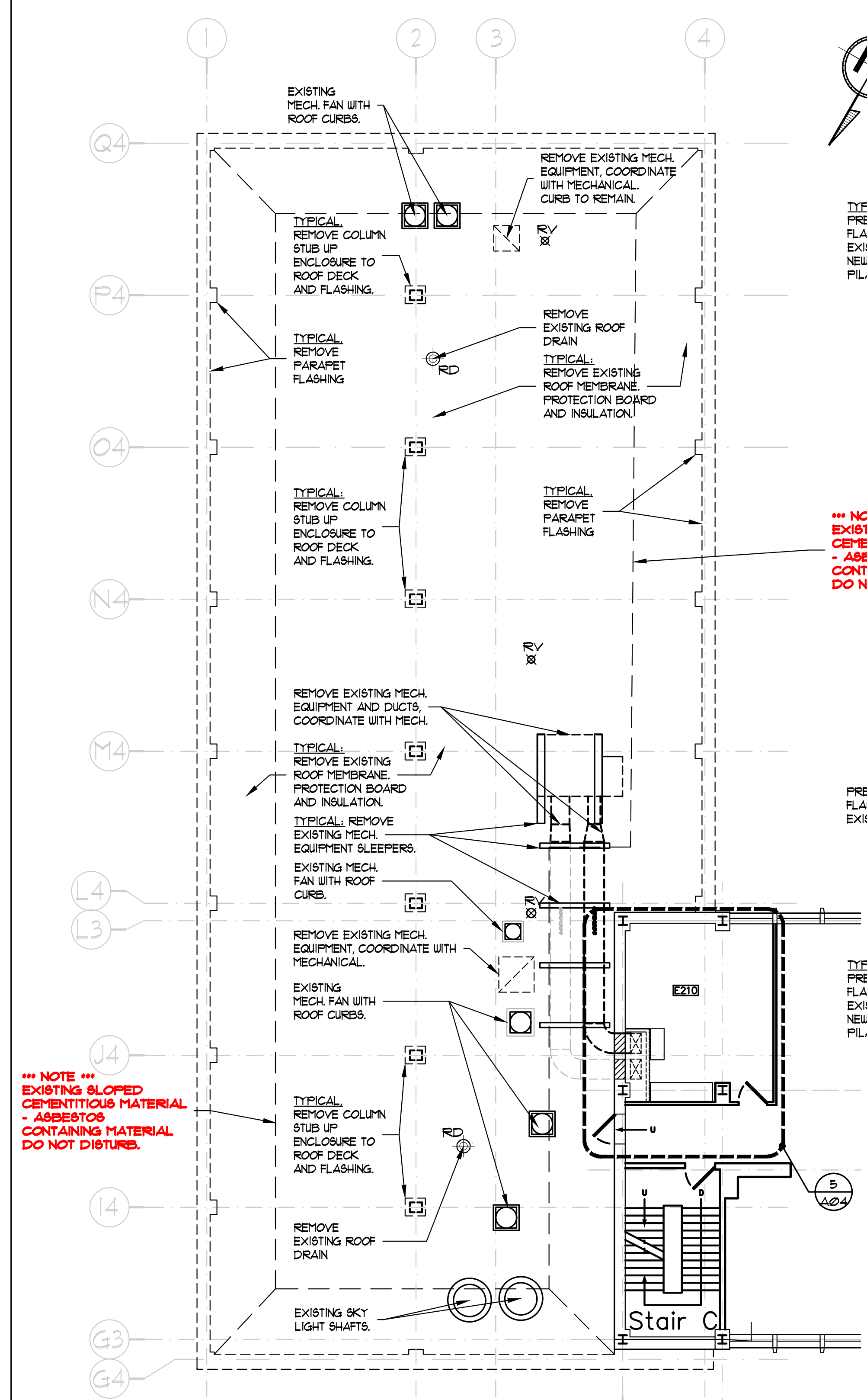
MONTREAL ROAD CAMPUS

DEMOLITION AND CONSTRUCTION ROOF PLANS AND BLDG ELEVATIONS

designed	SWH	conçu	date	FEBRUARY 2019
drawn	SWH	dessiné	scale	AS NOTED
checked		vérifié	sheet	1 of/de 6
approved	I D-T	approuvé	W.O.no.	D.T.no.
dwg.no.	5398-CS1	dessin no.		

**GENERAL NOTES**

- CONTRACTORS TO CHECK AND VERIFY ALL DIMENSIONS ON SITE PRIOR TO DEMOLITION OR CONSTRUCTION AND REPORT ANY ERRORS OR OMISSIONS TO DEPARTMENTAL REPRESENTATIVE.
- CONTRACTORS MUST VISIT THE SITE 4 FULLY FAMILIARIZE THEMSELVES WITH THE SCOPE OF THE WORK.
- PREVENT THE SPREAD OF DUST 4 DEBRIS BEYOND THE WORK AREA AND CLEAN ALL SURFACES AT COMPLETION.
- MAKE GOOD ALL SURFACES AFFECTED BY THIS WORK.
- COORDINATE ALL SHUTDOWNS WITH THE DEPARTMENTAL REPRESENTATIVE.
- TEMPORARILY REMOVE AND SUPPORT ELECTRICAL BOXES AND CONDUIT RUNNING ALONG PARAPETS AND ON ROOF SURFACES. REINSTATE UPON COMPLETION AND RE-SECURED AS REQUIRED.
- PROVIDE ALL LABOUR AND MATERIAL REQUIRED TO FORM 4 COMPLETE FUNCTIONAL SYSTEM AS DESCRIBED ON DRAWINGS.



ROOF AREA (TYP.)	
L	24.3 m
W	18.8 m
h	8.0 m
z	1.88 m
C <sub>s</sub>	0.96
C <sub>s</sub> C <sub>e</sub> (P1)	-1.8
C <sub>s</sub> C <sub>e</sub> (P2)	-2.5
C <sub>s</sub> C <sub>e</sub> (P3)	-5.4
C <sub>s</sub> C <sub>e</sub>	-0.9
l <sub>w</sub>	1.00
q	0.41 kPa
P <sub>1</sub>	-1.5 kPa
P <sub>2</sub>	-1.9 kPa
P <sub>3</sub>	-3.5 kPa

**ARCHITECTURAL NOTES:**

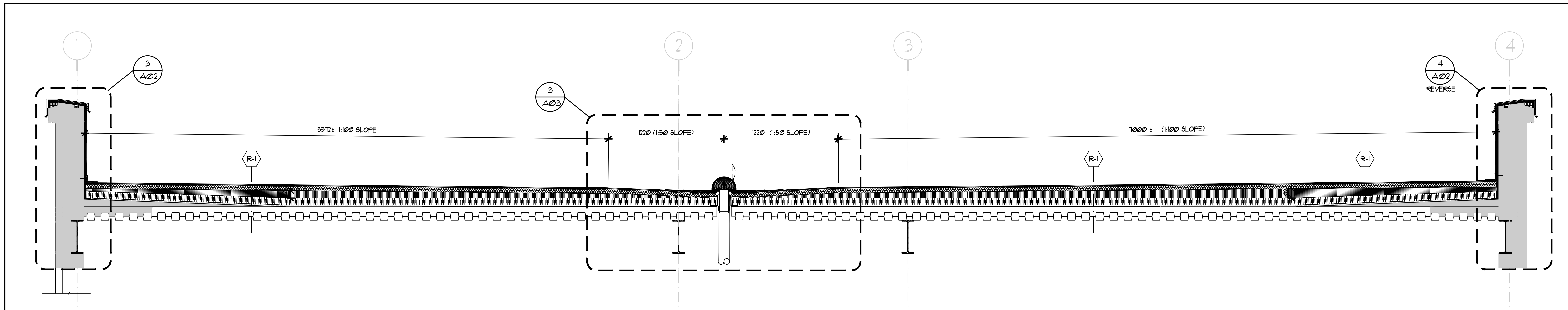
- (R-1) TYPICAL ROOF ASSEMBLY TYPE R-1:**
- SINGLE PLY MODIFIED BITUMINOUS MEMBRANE CAP SHEET.
  - SINGLE PLY MODIFIED BITUMINOUS MEMBRANE BASE SHEET.
  - HYBRID INSULATION SYSTEM:
    - 50mm ROCKWOOL TOPROCK DD PLUS; TOP SURFACE OF MINERAL FIBER INSULATION WITH INTEGRATED COVER BOARD PROTECTION.
    - APPROXIMATELY 1% SLOPE IN COMBINATION WITH EXISTING SLOPED CEMENTITIOUS MATERIAL. (NOTE: ASBESTOS CONTAINING MATERIAL DO NOT DISTURB. REFER TO PROJECT DSR.) A MINIMUM OF 15mm LAYERS OF RIGID CLOSED CELL POLYISOCYANURATE INSULATION.
    - STAGGER JOINTS BETWEEN ALL LAYERS OF INSULATION.
    - 1-PLY MOD. BIT AIR/VAPOUR BARRIER MEMBRANE.
    - REPAIR EXISTING VAPOUR BARRIER AS REQUIRED.
    - EXISTING CONCRETE FILL ON METAL DECK.
- (R-2) TYPICAL ROOF ASSEMBLY TYPE R-2:**
- SINGLE PLY MODIFIED BITUMINOUS MEMBRANE CAP SHEET.
  - SINGLE PLY MODIFIED BITUMINOUS MEMBRANE BASE SHEET.
  - HYBRID INSULATION SYSTEM:
    - 50mm ROCKWOOL TOPROCK DD PLUS; TOP SURFACE OF MINERAL FIBER INSULATION WITH INTEGRATED COVER BOARD PROTECTION.
    - APPROXIMATELY 1% SLOPE IN COMBINATION WITH EXISTING SLOPED CEMENTITIOUS MATERIAL. (NOTE: ASBESTOS CONTAINING MATERIAL DO NOT DISTURB. REFER TO PROJECT DSR.) A MINIMUM OF 15mm LAYERS OF RIGID CLOSED CELL POLYISOCYANURATE INSULATION.
    - STAGGER JOINTS BETWEEN ALL LAYERS OF INSULATION.
    - 1-PLY MOD. BIT AIR/VAPOUR BARRIER MEMBRANE.
    - REPAIR EXISTING VAPOUR BARRIER AS REQUIRED.
    - EXISTING CONCRETE FILL ON METAL DECK.

- (SUL) SKYLIGHT WALL ENCLOSURE:**
- SINGLE PLY MODIFIED BITUMINOUS MEMBRANE CAP SHEET.
  - SINGLE PLY MODIFIED BITUMINOUS MEMBRANE BASE SHEET.
  - VAPOUR BARRIER
  - 13mm PT PLYWOOD
  - 38x89mm FT STUDS AT 400mm O.C.
  - FILL VOIDS WITH FIBRE BATT INSULATION.
- (SR) SKYLIGHT ROOF ENCLOSURE:**
- SINGLE PLY MODIFIED BITUMINOUS MEMBRANE CAP SHEET.
  - SINGLE PLY MODIFIED BITUMINOUS MEMBRANE BASE SHEET.
  - VAPOUR BARRIER
  - 13mm PT PLYWOOD
  - 38x140mm FT JOISTS AT 400mm O.C. (1:35 SLOPED) MAINTAIN 25mm CLEARANCE BETWEEN NEW STRUCTURE AND EXISTING SKYLIGHT.
  - FILL VOIDS WITH FIBRE BATT INSULATION.

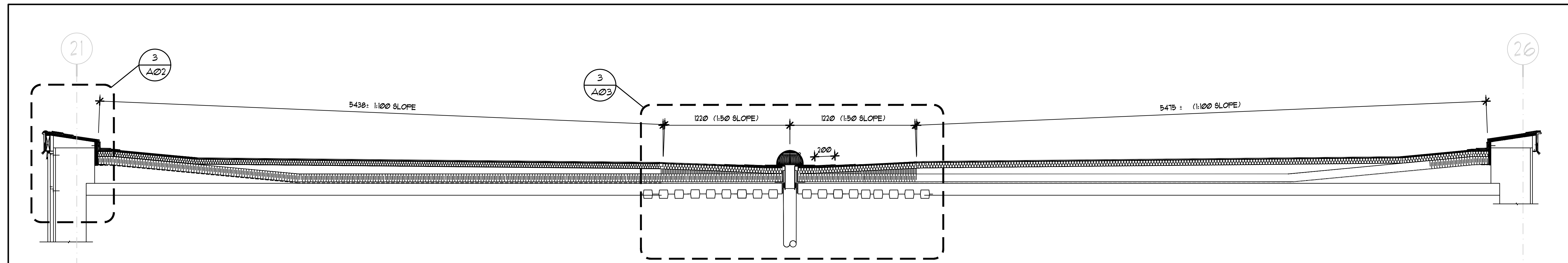
**NOTE:**  
 ALL MEMBRANE APPLICATIONS WITHIN 1.0m OF A WALL SHALL BE FULLY ADHERED. NO TORCHING WILL BE PERMITTED.



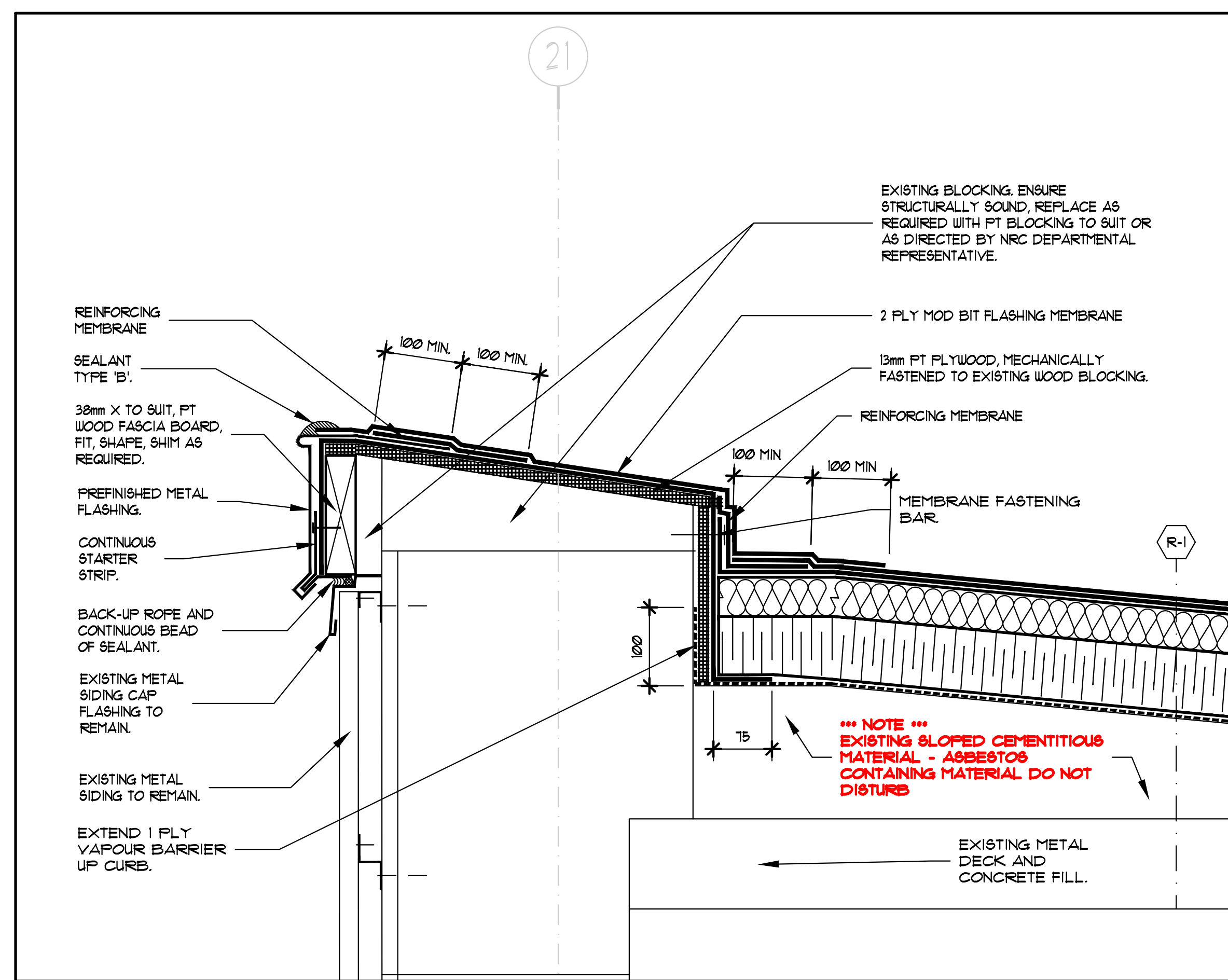




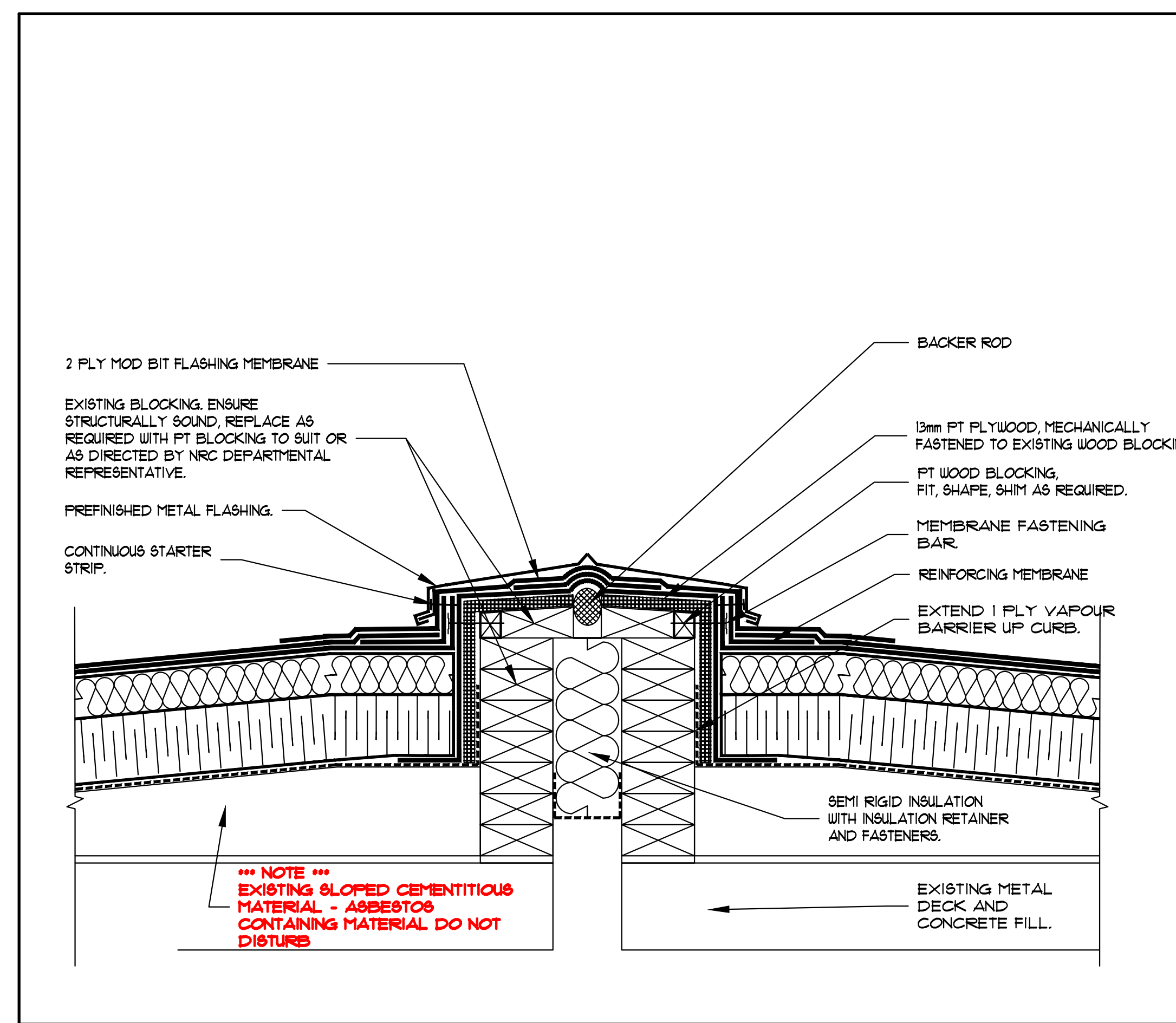
**1 ROOF 1 CROSS-SECTION**  
 SCALE 1:100



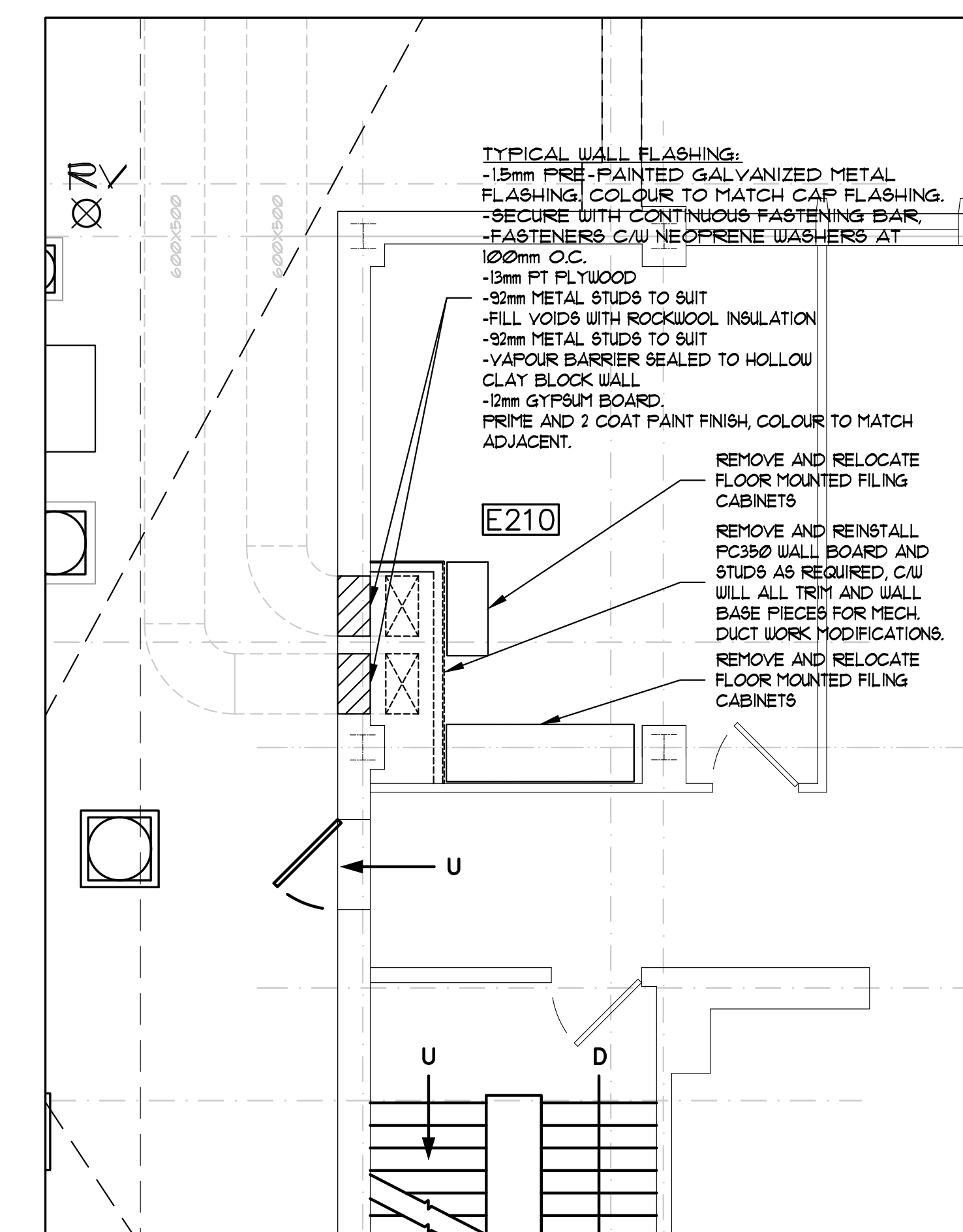
**2 ROOF 5 CROSS-SECTION**  
 SCALE 1:100



**3 TYPICAL ROOF 5 PARAPET DETAIL**  
 SCALE 1:5



**4 TYPICAL ROOF 5 EXPANSION JOINT DETAIL**  
 SCALE 1:5



**5 PART SECOND FLOOR PLAN**  
 SCALE 1:100

**NOTE:**  
 ALL MEMBRANE APPLICATIONS WITHIN 1.0m OF A WALL SHALL BE FULLY ADHERED. NO TORCHING WILL BE PERMITTED.

Verify all dimensions and site conditions and be responsible for same.  
 Vérifier toutes les dimensions et l'état des lieux et en assumer la responsabilité.

A Detail no. / No. du détail  
 B Location drawing no. / sur dessin no.  
 C Drawing no. / dessin no.

project / projet  
**M-58**  
**ROOF REPLACEMENT AREA '1', '5' and '8'**

**MONTREAL ROAD CAMPUS**  
 drawing / dessin  
**ROOF CROSS-SECTIONS AND TYPICAL ROOF REPLACEMENT DETAILS**

designed / conçu	SWH	date	FEBRUARY 2019
drawn / dessiné	SWH	scale / échelle	AS NOTED
checked / vérifié		sheet / feuille	5 of/de 6
approved / approuvé	I D-T	W.O.no.	D.T.no.
dwg.no.		dessin no.	

5398-A04

