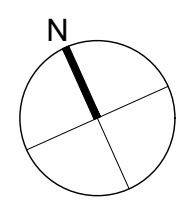


W. PENDER STREET

BURRARD STREET



BRANCHES
Communications (CB)
Corporate Services & Finance Branch (CSFB)
Enforcement (EB)
Environmental Protection Branch (EPB)
Canadian Wildlife Service (CWS)
Human Resources (HR)
Meteorological Services of Canada (MSC)
Science & Technology (S&T)
Regional Director General Office & Strategic Policy Branch
Shared Services Canada (SSC) MSC support
Undesignated Space (UDS)
TOTAL FTE / FLOOR

LEGEND
DFO SPACE
CORRIDOR
CORE
SHARED AREA

ROOM NAME
Name
0000 28m²
ROOM SIZE
ROOM NUMBER
BRANCH NAME
MSC-PPSC
BRANCH DESCRIPTION
FTE 21 SPS
SPECIAL PURPOSE SPACE
FTE NUMBER

NEW CONSTRUCTION LEGEND:
EXISTING DOOR TO REMAIN
EXISTING WINDOW/ WALL TO REMAIN
NEW DOOR/ WINDOW/ WALL
SHADED AREA INDICATES BUILDING SPACE BEYOND PROJECT SCOPE OF WORK

EQUIPMENT DEFINITIONS
A/V 60" AUDIOVISUAL DISPLAY
A/V (A) AUDIOVISUAL DISPLAY (2 TVs ON ADJUSTABLE ARMS-NEW)
A/V (B) AUDIOVISUAL DISPLAY (2 TVs ON WALL TO REPLACE OLD)
A/V (C) AUDIOVISUAL DISPLAY (1 TV'S ON ADJUSTABLE ARMS)
COPY PHOTO COPIER
FAX FAX MACHINE
MFD MULTIFUNCTION DEVICE
V/C VIDEO CONFERENCE EQUIPMENT
WB-6" 6" WHITE BOARD CW TRAY
WB-8" 8" WHITE BOARD CW TRAY
WS WORK STATION
KITCHEN:
F FRIDGE/REFRIGERATOR
M MICROWAVE
S SINK

FURNITURE NOTE:
1 FURNITURE TO BE SUPPLIED AND INSTALLED BY OWNER.
2 MOVERS AND MOVE MANAGEMENT COORDINATION BY OWNER.
3 WHITEBOARDS TO BE SUPPLIED AND INSTALLED BY CONTRACTOR.

FILING STORAGE LEGEND:
3HIGH - 36X18 FILING DRAWERS
5HIGH - 36X18 FILING DRAWERS (SEISMICALLY RESTRAINED)
4HIGH - 36X18 SECURE FILING DRAWERS (SEISMICALLY RESTRAINED)
OPTIMUMMEDIA SHELVING - 64X56X16
BC3 42" HIGH BOOKCASE
BC5 72" HIGH BOOKCASE (SEISMICALLY RESTRAINED)

PARTITION LEGEND:
P2 = 36"
P4 = 60"

Public Services and Procurement Canada / Services publics et Approvisionnement Canada
Real Property Branch / Direction générale des biens immobiliers

220 - 12 Water Street
Vancouver, BC V6B 1A5
604 - 736 - 5581
Vancouver Victoria Calgary
iredale.ca

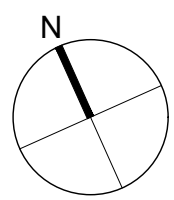
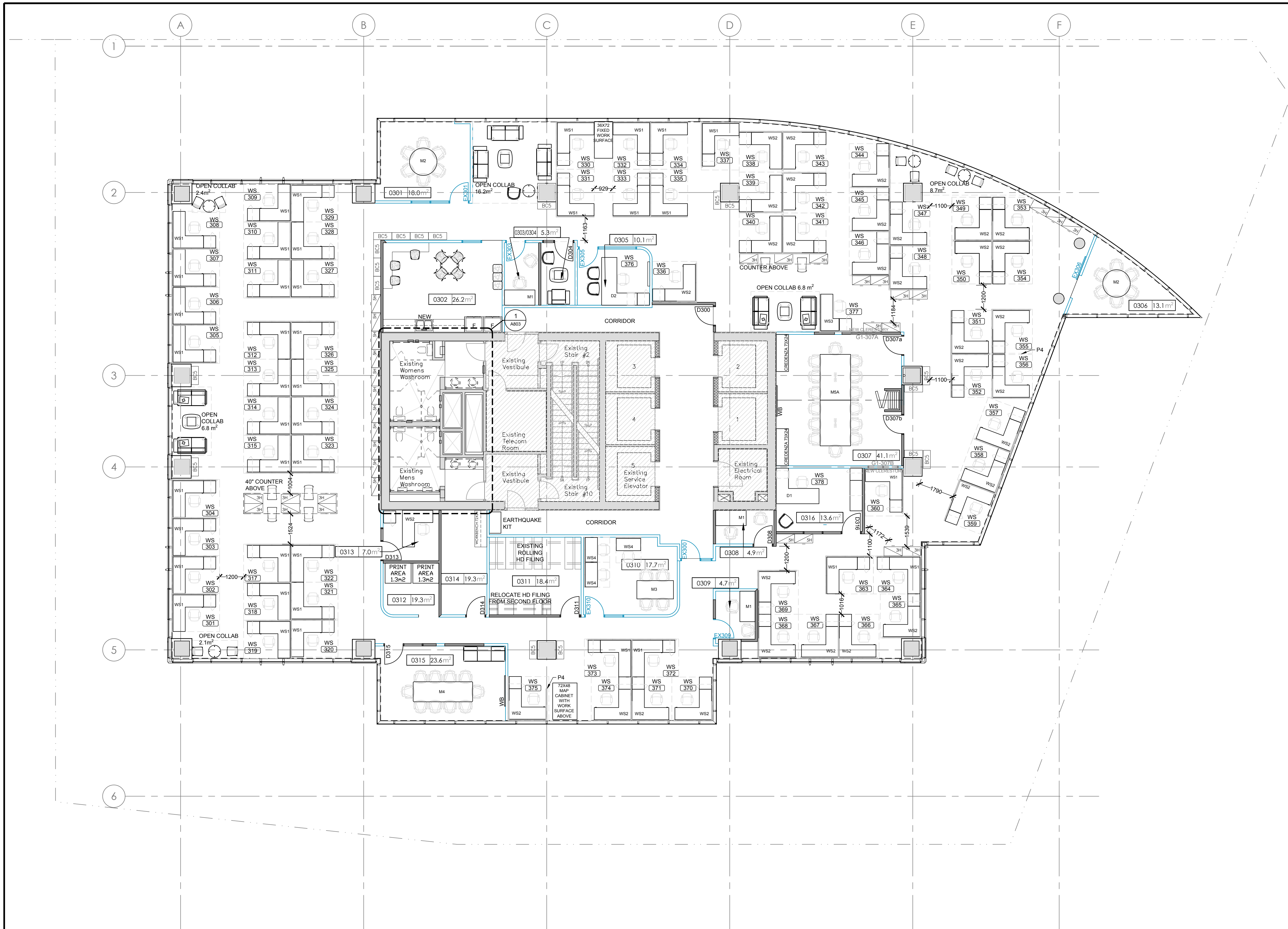
Contractor to verify all dimensions & conditions on site and immediately notify the departmental representative of all discrepancies.

| 1 | Issued for Construction | 14 Dec 18 |
|-----------|--|-----------|
| revisions | description | date |
| A | A detail no. du detail | A |
| C | B location drawing no. sur dessin no. C drawing no. dessin no. | B C |

project
ENVIRONMENT CANADA
Space Optimization
401 BURRARD STREET
VANCOUVER, BC

drawing
dessin
NEW FURNITURE PLAN
LEVEL 1 - PHASE 7
SCALE - 1:100

| | | |
|-----------------|-------------------|---------------------------|
| Designed By | Denis Gautier | Conçu par |
| Date | 2018/12/14 | (yyyy/mm/dd) |
| Drawn By | Sujata Arya | Dessiné par |
| Date | 2018/12/14 | (yyyy/mm/dd) |
| Reviewed By | James Emery | Examiné par |
| Date | 2018/12/14 | (yyyy/mm/dd) |
| Approved By | | Approuvé par |
| Date | | (yyyy/mm/dd) |
| Tender | | Soumission |
| Project Manager | Denis Gautier | Administrateur de projets |
| Project no. | | No. du projet |
| | 17129 / GOC504787 | |
| Drawing no. | | No. du dessin |
| | A401 | |



BRANCHES
Communications (CB)
Corporate Services & Finance Branch (CSFB)
Enforcement (EB)
Environmental Protection Branch (EPB)
Canadian Wildlife Service (CWS)
Human Resources (HR)
Meteorological Services of Canada (MSC)
Science & Technology (S&T)
Regional Director General Office & Strategic Policy Branch
Shared Services Canada (SSC) MSC support
Undesignated Space (UDS)
TOTAL FTE / FLOOR

LEGEND
DFO SPACE
CORRIDOR
CORE
SHARED AREA

ROOM NAME
0000 78.0 m²
ROOM SIZE
ROOM NUMBER
BRANCH NAME
MSC-PSPC
BRANCH DESCRIPTION
FTE 21 SPS
SPECIAL PURPOSE SPACE
FTE NUMBER

NEW CONSTRUCTION LEGEND:
EXISTING DOOR TO REMAIN
EXISTING WINDOW/ WALL TO REMAIN
NEW DOOR/ WINDOW/ WALL
SHADED AREA INDICATES BUILDING SPACE BEYOND PROJECT SCOPE OF WORK

EQUIPMENT DEFINITIONS
AV 60" AUDIOVISUAL DISPLAY
AV (A) AUDIOVISUAL DISPLAY (2 TYS ON ADJUSTABLE ARMS-NEW)
AV (B) AUDIOVISUAL DISPLAY (2 TYS ON WALL TO REPLACE OLD)
AV (C) AUDIOVISUAL DISPLAY (1 TYS ON ADJUSTABLE ARMS)
COPY PHOTO COPIER
FAX FAX MACHINE
MFD MULTI-FUNCTION DEVICE
V-C VIDEO CONFERENCE EQUIPMENT
WB-6 6" WHITE BOARD CW TRAY
WB-8 8" WHITE BOARD CW TRAY
WS WORK STATION
KITCHEN:
F FRIDGE/REFRIGERATOR
M MICROWAVE
S SINK

FURNITURE NOTE:
1 FURNITURE TO BE SUPPLIED AND INSTALLED BY OWNER.
2 MOVERS AND MOVE MANAGEMENT COORDINATION BY OWNER.
3 WHITEBOARDS TO BE SUPPLIED AND INSTALLED BY CONTRACTOR.

FILING STORAGE LEGEND:
3-HIGH - 36X18 FILING DRAWERS
5-HIGH - 36X18 FILING DRAWERS (SEISMICALLY RESTRAINED)
4-HIGH - 36X18 SECURE FILING DRAWERS (SEISMICALLY RESTRAINED)
OPTIMUM MEDIA SHELVING - 84X30X18
42" HIGH BOOKCASE
72" HIGH BOOKCASE (SEISMICALLY RESTRAINED)

PARTITION LEGEND:
P2 = 36"
P4 = 60"

Public Services and Procurement Canada / Services publics et Approvisionnement Canada
Real Property Branch / Direction générale des biens immobiliers

220 - 12 Water Street
Vancouver, BC V6B 1A5
604 - 736 - 5581
Vancouver Victoria Calgary
iredale.ca

Contractor to verify all dimensions & conditions on site and immediately notify the departmental representative of all discrepancies.

| 1 | Issued for Construction | 14 Dec 18 |
|-----------|---------------------------------------|-----------|
| revisions | description | date |
| A | A detail no. no. du detail | A |
| C | B location drawing no. sur dessin no. | B |
| | C drawing no. dessin no. | C |

project ENVIRONMENT CANADA
Space Optimization
401 BURRARD STREET
VANCOUVER, BC

drawing NEW FURNITURE PLAN
LEVEL 3 - PHASE 7
SCALE : 1:100

| Designed By | Conçu par |
|---------------|------------|
| Denis Gautier | 2018/12/14 |

| Date | (yyyy/mm/dd) |
|------------|--------------|
| 2018/12/14 | |

| Drawn By | Dessiné par |
|-------------|-------------|
| Sujata Arya | 2018/12/14 |

| Date | (yyyy/mm/dd) |
|------------|--------------|
| 2018/12/14 | |

| Reviewed By | Examiné par |
|-------------|-------------|
| James Emery | 2018/12/14 |

| Date | (yyyy/mm/dd) |
|------------|--------------|
| 2018/12/14 | |

| Approved By | Approuvé par |
|-------------|--------------|
| | |

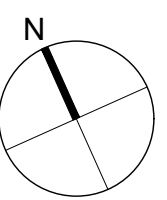
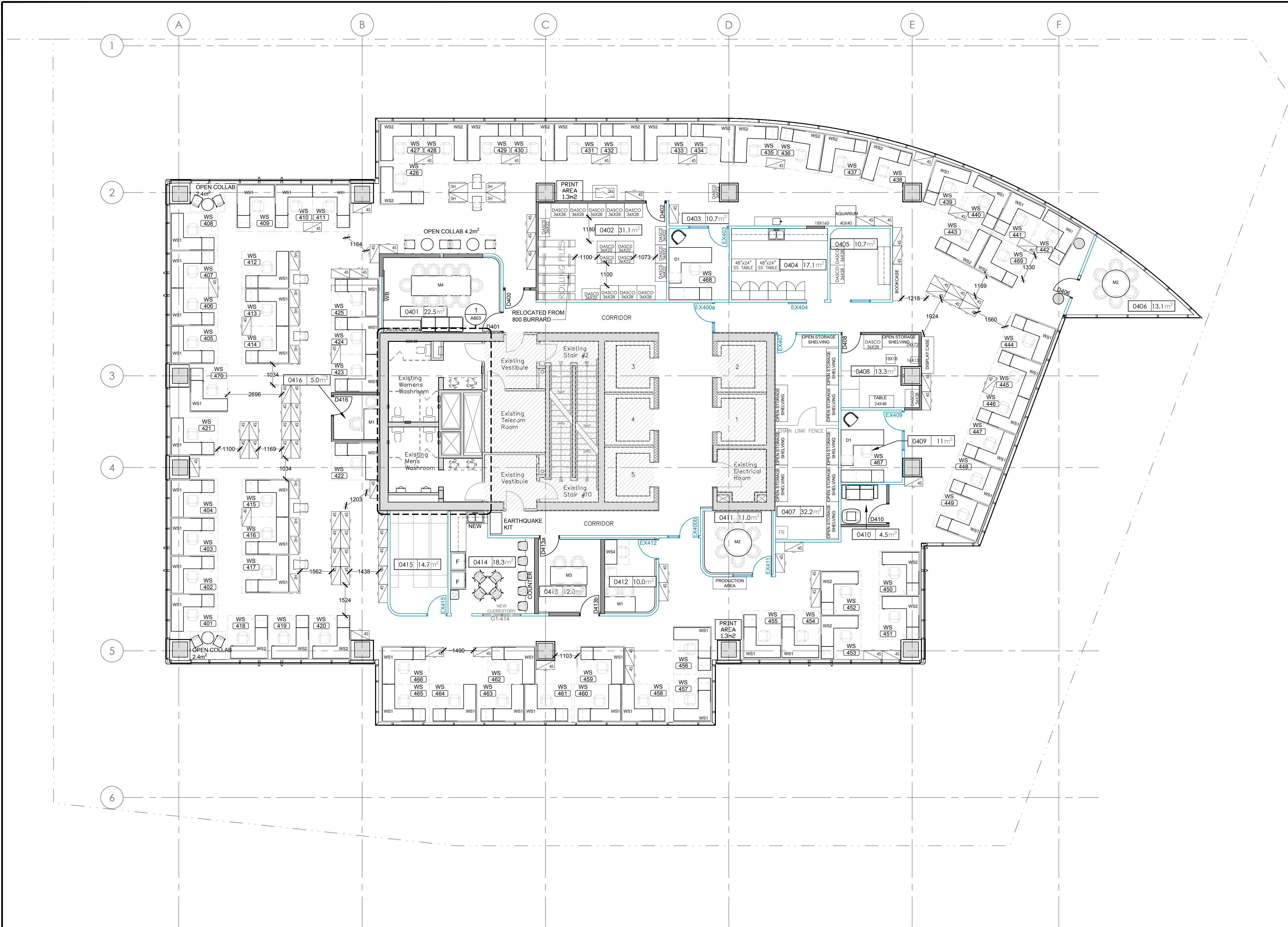
| Date | (yyyy/mm/dd) |
|------|--------------|
| | |

| Tender | Soumission |
|--------|------------|
| | |

| Project Manager | Administrateur de projets |
|-----------------|---------------------------|
| Denis Gautier | |

| Project no. | No. du projet |
|-------------------|---------------|
| 17129 / GOC504787 | |

| Drawing no. | No. du dessin |
|-------------|---------------|
| A403 | |



BRANCHES

Communications (CB)
Corporate Services & Finance Branch (CSFB)
Enforcement (EB)
Environmental Protection Branch (EPB)
Canadian Wildlife Service (CWS)
Human Resources (HR)
Meteorological Services of Canada (MSC)
Science & Technology (S&T)
Regional Director General Office & Strategic Policy Branch
Shared Services Canada (SSC) MSC support
Undesignated Space (UDS)
TOTAL FTE / FLOOR

LEGEND

- DFO SPACE
- CORRIDOR
- CORE
- SHARED AREA

ROOM NAME

Room 0000 28m²
ROOM SIZE
ROOM NUMBER

BRANCH NAME

MSC-PSPC
FTE 21 SPS
BRANCH DESCRIPTION
SPECIAL PURPOSE SPACE
FTE NUMBER

WS (300) FREE WORKSTATION 1.5 m²

WS (300) FLEX WORKSTATION 3.0 m²

WS (300) FIXED WORKSTATION 4.5 m²

NEW CONSTRUCTION LEGEND:

- EXISTING DOOR TO REMAIN
- EXISTING WINDOW/ WALL TO REMAIN
- NEW DOOR/ WINDOW/ WALL
- SHADED AREA INDICATES BUILDING SPACE BEYOND PROJECT SCOPE OF WORK

EQUIPMENT DEFINITIONS

AV 60" AUDIOVISUAL DISPLAY
AV (A) AUDIOVISUAL DISPLAY (2 TYS ON ADJUSTABLE ARMS-NEW)
AV (B) AUDIOVISUAL DISPLAY (2 TYS ON WALL TO REPLACE OLD)
AV (C) AUDIOVISUAL DISPLAY (1 TYS ON ADJUSTABLE ARMS)
COPY PHOTO COPIER
FAX FAX MACHINE
MFD MULTI-FUNCTION DEVICE
V-C VIDEO CONFERENCE EQUIPMENT
WB-6 6" WHITE BOARD CW TRAY
WB-8 8" WHITE BOARD CW TRAY
WS WORK STATION

KITCHEN:

F FRIDGE/REFRIGERATOR
M MICROWAVE
S SINK

FURNITURE NOTE:

- FURNITURE TO BE SUPPLIED AND INSTALLED BY OWNER.
- MOVERS AND MOVE MANAGEMENT COORDINATION BY OWNER.
- WHITEBOARDS TO BE SUPPLIED AND INSTALLED BY CONTRACTOR.

FILING STORAGE LEGEND:

- 3" HIGH - 36X18 FILING DRAWERS
- 5" HIGH - 36X18 FILING DRAWERS (SEISMICALLY RESTRAINED)
- 4" HIGH - 36X18 SECURE FILING DRAWERS (SEISMICALLY RESTRAINED)
- OPTIMUM MEDIA SHELVING - 84X36X18
- 42" HIGH BOOKCASE
- 72" HIGH BOOKCASE (SEISMICALLY RESTRAINED)

PARTITION LEGEND:

- P2 = 36"
- P4 = 60"

Canada

Public Services and Procurement Canada Services publics et Approvisionnement Canada
Real Property Branch Direction générale des biens immobiliers

BGIS



IREDALE
ARCHITECTURE

220 - 12 Water Street
Vancouver, BC V6B 1A5
604 - 736 - 5581
Vancouver Victoria Calgary
iredale.ca

Contractor to verify all dimensions & conditions on site and immediately notify the departmental representative of all discrepancies.

1 Issued for Construction 14 Dec 18

| revisions | description | date |
|-----------|---------------------------------------|------|
| A | A detail no. no. du detail | A |
| C | B location drawing no. sur dessin no. | B |
| | C drawing no. dessin no. | C |

project project

ENVIRONMENT CANADA
Space Optimization

401 BURRARD STREET
VANCOUVER, BC

drawing dessin

NEW FURNITURE
PLAN
LEVEL 4 - PHASE 7

SCALE - 1:100

Designed By Denis Gautier Conçu par
Date 2018/12/14 (yyyy/mm/dd)

Drawn By Sujata Arya Dessiné par
Date 2018/12/14 (yyyy/mm/dd)

Reviewed By James Emery Examiné par
Date 2018/12/14 (yyyy/mm/dd)

Approved By Approuvé par
Date (yyyy/mm/dd)

Tender Soumission

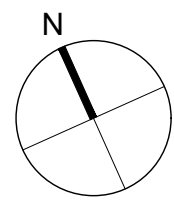
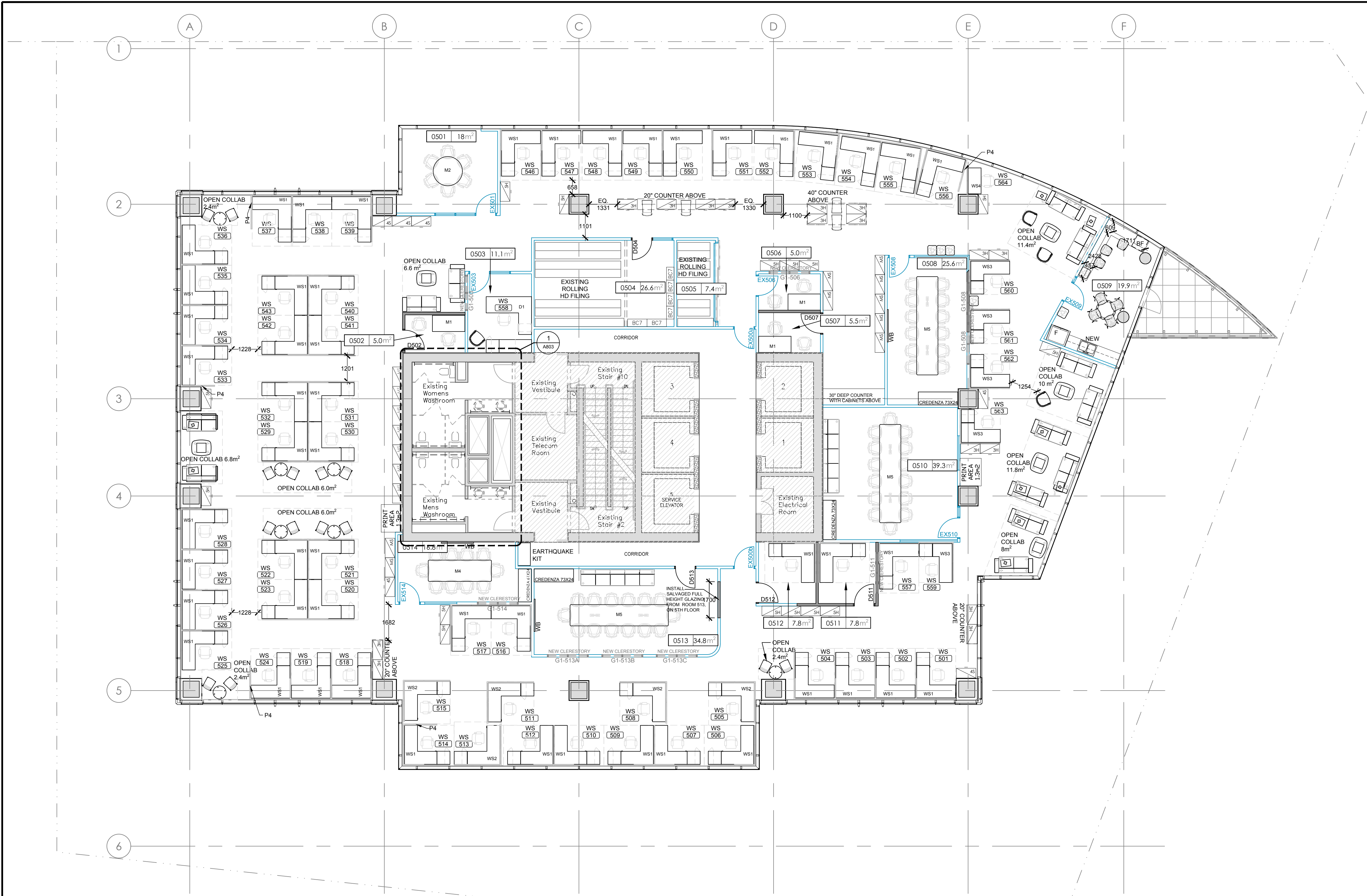
Project Manager Administrateur de projets

Project no. No. du projet

17129 / GOC504787

Drawing no. No. du dessin

A404



BRANCHES

Communications (CB)
Corporate Services & Finance Branch (CSFB)
Enforcement (EB)
Environmental Protection Branch (EPB)
Canadian Wildlife Service (CWS)
Human Resources (HR)
Meteorological Services of Canada (MSC)
Science & Technology (S&T)
Regional Director General Office & Strategic Policy Branch
Shared Services Canada (SSC) MSC support
Undesignated Space (UDS)
TOTAL FTE / FLOOR

LEGEND

DFO SPACE
CORRIDOR
CORE
SHARED AREA

ROOM NAME

Home
0000 28m²

ROOM SIZE

ROOM NUMBER

BRANCH NAME

MSC-FSPC
FTE 21 SPS

BRANCH DESCRIPTION

SPECIAL PURPOSE SPACE

FTE NUMBER

WS (300) FREE WORKSTATION 1.5 m²

WS (300) FLEX WORKSTATION 3.0 m²

WS (300) FIXED WORKSTATION 4.5 m²

NEW CONSTRUCTION LEGEND:

EXISTING DOOR TO REMAIN
EXISTING WINDOW/ WALL TO REMAIN
NEW DOOR/ WINDOW/ WALL
SHADED AREA INDICATES BUILDING SPACE BEYOND PROJECT SCOPE OF WORK

EQUIPMENT DEFINITIONS

AV 60" AUDIOVISUAL DISPLAY
AV (A) AUDIOVISUAL DISPLAY (2 TYS ON ADJUSTABLE ARMS-NEW)
AV (B) AUDIOVISUAL DISPLAY (2 TYS ON WALL TO REPLACE OLD)
AV (C) AUDIOVISUAL DISPLAY (1 TYS ON ADJUSTABLE ARMS)
COPY PHOTO COPIER
FAX FAX MACHINE
MFD MULTI-FUNCTION DEVICE
V-C VIDEO CONFERENCE EQUIPMENT
WB-6 6" WHITE BOARD CW TRAY
WB-8 8" WHITE BOARD CW TRAY
WS WORK STATION

KITCHEN:
F FRIDGE/REFRIGERATOR
M MICROWAVE
S SINK

FURNITURE NOTE:

1 FURNITURE TO BE SUPPLIED AND INSTALLED BY OWNER.
2 MOVERS AND MOVE MANAGEMENT COORDINATION BY OWNER.
3 WHITEBOARDS TO BE SUPPLIED AND INSTALLED BY CONTRACTOR.

FILING STORAGE LEGEND:

3" HIGH - 36X18 FILING DRAWERS
5" HIGH - 36X18 FILING DRAWERS (SEISMICALLY RESTRAINED)
4" HIGH - 36X18 SECURE FILING DRAWERS (SEISMICALLY RESTRAINED)
OPTIMUM MEDIA SHELVING - 84X36X18
42" HIGH BOOKCASE
72" HIGH BOOKCASE (SEISMICALLY RESTRAINED)

PARTITION LEGEND:

P2 = 36"
P4 = 60"



Contractor to verify all dimensions & conditions on site and immediately notify the departmental representative of all discrepancies.

| 1 | Issued for Construction | 14 Dec 18 |
|-----------|--|-----------|
| revisions | description | date |
| A | A detail no. no. du detail | A |
| C | B location drawing no. sur dessin no. C drawing no. dessin no. | B C |

project project
ENVIRONMENT CANADA
Space Optimization

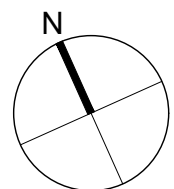
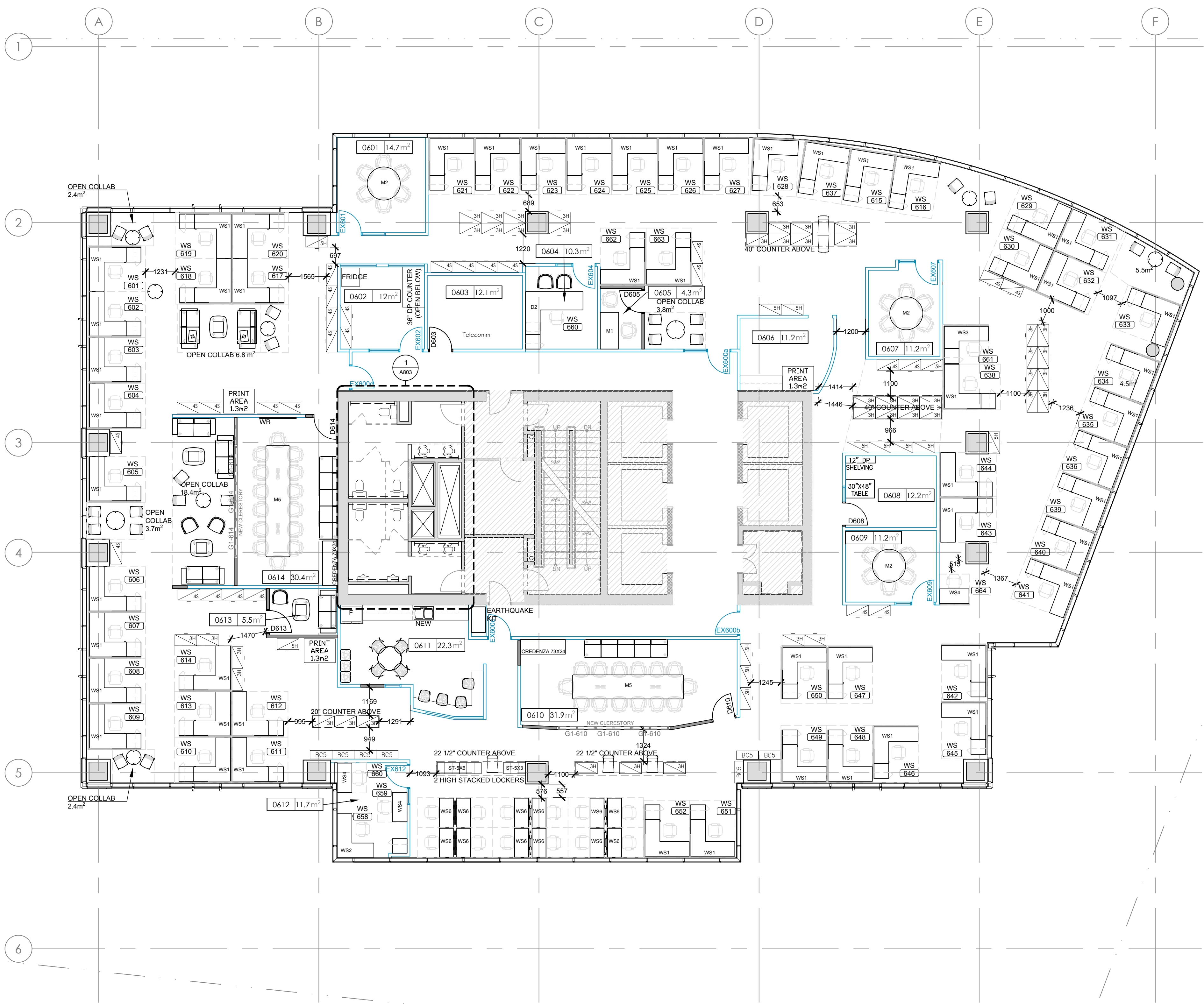
401 BARRARD STREET
VANCOUVER, BC

drawing dessin

NEW FURNITURE PLAN
LEVEL 5 - PHASE 7

SCALE - 1:100

| | | |
|-----------------|-------------------|---------------------------|
| Designed By | Denis Gautier | Conçu par |
| Date | 2018/12/14 | (yyyy/mm/dd) |
| Drawn By | Sujata Arya | Dessiné par |
| Date | 2018/12/14 | (yyyy/mm/dd) |
| Reviewed By | James Emery | Examiné par |
| Date | 2018/12/14 | (yyyy/mm/dd) |
| Approved By | | Approuvé par |
| Date | | (yyyy/mm/dd) |
| Tender | | Soumission |
| Project Manager | Denis Gautier | Administrateur de projets |
| Project no. | | No. du projet |
| | 17129 / GOC504787 | |
| Drawing no. | | No. du dessin |



BRANCHES
Communications (CB)
Corporate Services & Finance Branch (CSFB)
Enforcement (EB)
Environmental Protection Branch (EPB)
Canadian Wildlife Service (CWS)
Human Resources (HR)
Meteorological Services of Canada (MSC)
Science & Technology (S&T)
Regional Director General Office & Strategic Policy Branch
Shared Services Canada (SSC) MSC support
Undesignated Space (UDS)
TOTAL FTE / FLOOR

LEGEND
DFO SPACE
CORRIDOR
CORE
SHARED AREA

ROOM NAME
Home
0000 28m²
ROOM SIZE
ROOM NUMBER
BRANCH NAME
MSC-FSPC
BRANCH DESCRIPTION
FTE 21 SPS
SPECIAL PURPOSE SPACE
FTE NUMBER

NEW CONSTRUCTION LEGEND:
EXISTING DOOR TO REMAIN
EXISTING WINDOW/ WALL TO REMAIN
NEW DOOR/ WINDOW/ WALL
SHADED AREA INDICATES BUILDING SPACE BEYOND PROJECT SCOPE OF WORK

EQUIPMENT DEFINITIONS
AV 60" AUDIOVISUAL DISPLAY
AV (A) AUDIOVISUAL DISPLAY (2 TYS ON ADJUSTABLE ARMS-NEW)
AV (B) AUDIOVISUAL DISPLAY (2 TYS ON WALL TO REPLACE OLD)
AV (C) AUDIOVISUAL DISPLAY (1 TYS ON ADJUSTABLE ARMS)
COPY PHOTO COPIER
FAX FAX MACHINE
MFD MULTI-FUNCTION DEVICE
V-C VIDEO CONFERENCE EQUIPMENT
WB-6 6" WHITE BOARD CW TRAY
WB-8 8" WHITE BOARD CW TRAY
WS WORK STATION
KITCHEN:
F FRIDGE/REFRIGERATOR
M MICROWAVE
S SINK

FURNITURE NOTE:
1 FURNITURE TO BE SUPPLIED AND INSTALLED BY OWNER.
2 MOVERS AND MOVE MANAGEMENT COORDINATION BY OWNER.
3 WHITEBOARDS TO BE SUPPLIED AND INSTALLED BY CONTRACTOR.

FILING STORAGE LEGEND:
3 HIGH - 36X18 FILING DRAWERS
5 HIGH - 36X18 FILING DRAWERS (SEISMICALLY RESTRAINED)
4 HIGH - 36X18 SECURE FILING DRAWERS (SEISMICALLY RESTRAINED)
OPTIMUM MEDIA SHELVING - 84X38X18
42" HIGH BOOKCASE
72" HIGH BOOKCASE (SEISMICALLY RESTRAINED)

PARTITION LEGEND:
P2 = 36"
P4 = 60"

Public Services and Procurement Canada / Services publics et Approvisionnement Canada
Real Property Branch / Direction générale des biens immobiliers

220 - 12 Water Street
Vancouver, BC V6B 1A5
604 - 736 - 5581
Vancouver Victoria Calgary
iredale.ca

Contractor to verify all dimensions & conditions on site and immediately notify the departmental representative of all discrepancies.

| 1 | Issued for Construction | 14 Dec 18 |
|-----------|--|-----------|
| revisions | description | date |
| A | A detail no. no. du detail | A |
| C | B location drawing no. sur dessin no. C drawing no. dessin no. | B C |

project project

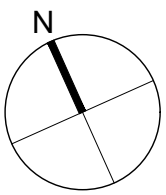
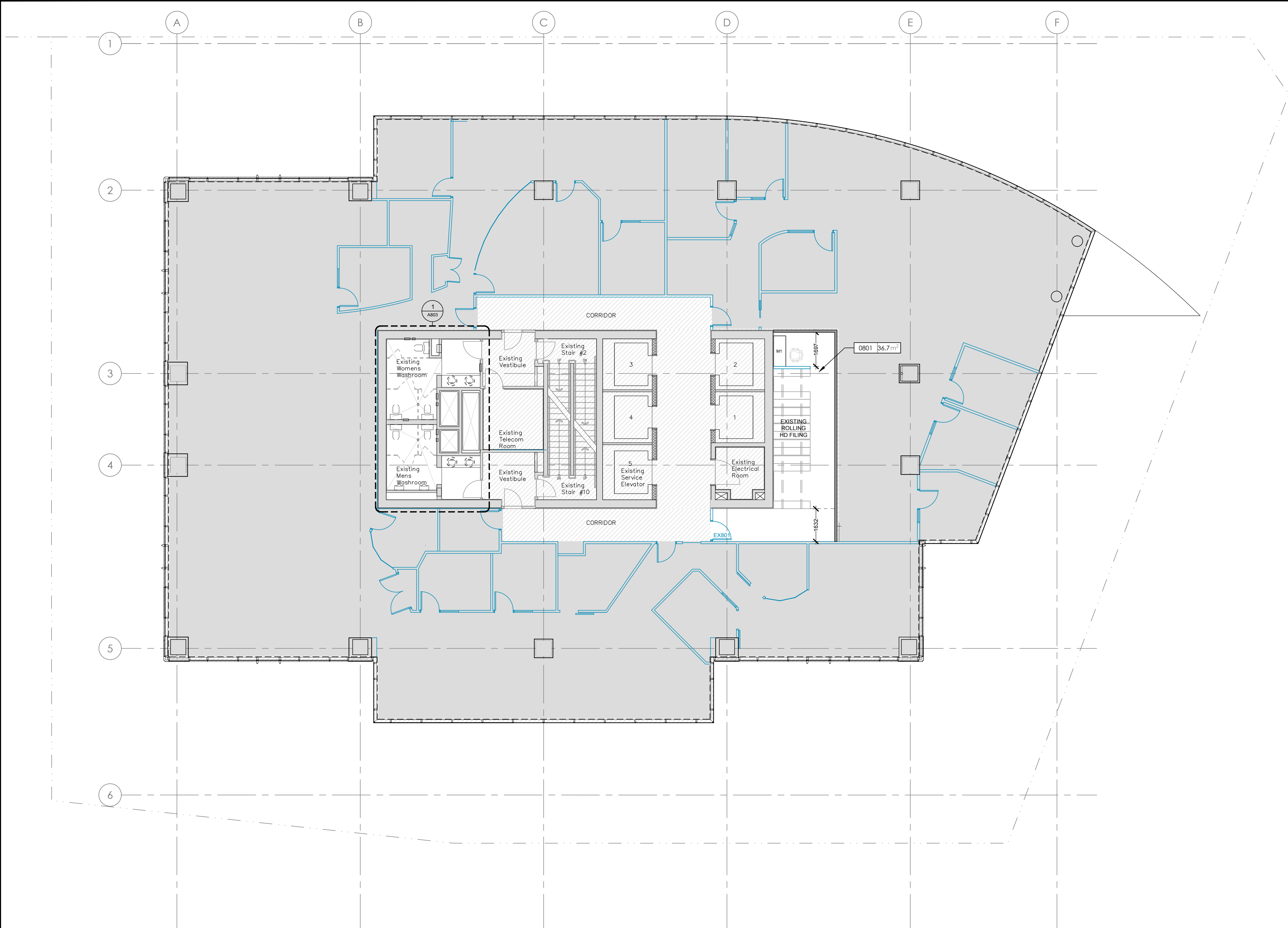
ENVIRONMENT CANADA
Space Optimization

401 BURRARD STREET
VANCOUVER, BC

drawing dessin

NEW FURNITURE PLAN
LEVEL 6 - PHASE 7
SCALE - 1:100

| Designed By | Denis Gautier | Conçu par |
|-----------------|-------------------|---------------------------|
| Date | 2018/12/14 | (yyyy/mm/dd) |
| Drawn By | Sujata Arya | Dessiné par |
| Date | 2018/12/14 | (yyyy/mm/dd) |
| Reviewed By | James Emery | Examiné par |
| Date | 2018/12/14 | (yyyy/mm/dd) |
| Approved By | | Approuvé par |
| Date | | (yyyy/mm/dd) |
| Tender | | Soumission |
| Project Manager | Denis Gautier | Administrateur de projets |
| Project no. | | No. du projet |
| | 17129 / GOC504787 | |
| Drawing no. | | No. du dessin |
| | A406 | |



BRANCHES

Communications (CB)
Corporate Services & Finance Branch (CSFB)
Enforcement (EB)
Environmental Protection Branch (EPB)
Canadian Wildlife Service (CWS)
Human Resources (HR)
Meteorological Services of Canada (MSC)
Science & Technology (S&T)
Regional Director General Office & Strategic Policy Branch
Shared Services Canada (SSC) MSC support
Undesignated Space (UDS)
TOTAL FTE / FLOOR

LEGEND

DFO SPACE

CORRIDOR

CORE

SHARED AREA

ROOM NAME

0000 28m²

ROOM SIZE

ROOM NUMBER

BRANCH NAME

MSC-SPSC

BRANCH DESCRIPTION

FTE 21 SPS

SPECIAL PURPOSE SPACE

FTE NUMBER

WS 300

FREE WORKSTATION

1.5 m²

WS 300

FLEX WORKSTATION

3.0 m²

WS 1 WS 2 WS 300

FIXED WORKSTATION

4.5 m²

NEW CONSTRUCTION LEGEND:

EXISTING DOOR TO REMAIN

EXISTING WINDOW/ WALL TO REMAIN

NEW DOOR/ WINDOW/ WALL

SHADED AREA INDICATES BUILDING SPACE BEYOND PROJECT SCOPE OF WORK

EQUIPMENT DEFINITIONS

AV 60" AUDIOVISUAL DISPLAY
AV (A) AUDIOVISUAL DISPLAY (2 TV'S ON ADJUSTABLE ARMS-NEW)
AV (B) AUDIOVISUAL DISPLAY (2 TV'S ON WALL TO REPLACE OLD)
AV (C) AUDIOVISUAL DISPLAY (1 TV'S ON ADJUSTABLE ARMS)
COPY PHOTO COPIER
FAX FAX MACHINE
MFD MULTI-FUNCTION DEVICE
V-C VIDEO CONFERENCE EQUIPMENT
WB-6" 6" WHITE BOARD C/W TRAY
WB-8" 8" WHITE BOARD C/W TRAY
WS WORK STATION

KITCHEN:

F FRIDGE/REFRIGERATOR
M MICROWAVE
S SINK

FURNITURE NOTE:

1 FURNITURE TO BE SUPPLIED AND INSTALLED BY OWNER.

2 MOVERS AND MOVE MANAGEMENT COORDINATION BY OWNER.

3 WHITEBOARDS TO BE SUPPLIED AND INSTALLED BY CONTRACTOR.

FILING STORAGE LEGEND:

3HIGH - 36X18 FILING DRAWERS

5HIGH - 36X18 FILING DRAWERS (SEISMICALLY RESTRAINED)

4HIGH - 36X18 SECURE FILING DRAWERS (SEISMICALLY RESTRAINED)

OPTIMUMMEDIA SHELVING - 64X56X18

BC3

42" HIGH BOOKCASE

BC5

72" HIGH BOOKCASE (SEISMICALLY RESTRAINED)

PARTITION LEGEND:

P2 = 36"

P4 = 60"

Canada

Public Services and Procurement Canada

Services publics et Approvisionnement Canada

Real Property Branch

Direction générale des biens immobiliers

BGIS

IREDALE

ARCHITECTURE

220 - 12 Water Street
Vancouver, BC V6B 1A5
604 - 736 - 5581
Vancouver Victoria Calgary
iredale.ca

Contractor to verify all dimensions & conditions on site and immediately notify the departmental representative of all discrepancies.

| | | |
|-----------|---------------------------------------|-----------|
| 1 | Issued for Construction | 14 Dec 18 |
| revisions | description | date |
| A | A detail no. no. du detail | A |
| C | B location drawing no. sur dessin no. | B |
| | C drawing no. dessin no. | C |

project

ENVIRONMENT CANADA
Space Optimization

401 BURRARD STREET
VANCOUVER, BC

drawing

dessin

NEW FURNITURE PLAN
LEVEL 8 - PHASE 7

SCALE - 1:100

Designed By
2018/12/14

Denis Gautier

Conçu par

Drawn By
2018/12/14

Sujata Arya

Dessiné par

Reviewed By
2018/12/14

James Emery

Examiné par

Approved By

Approuvé par

Date

(yyyy/mm/dd)

Tender

Soumission

Project Manager
Project no.

Denis Gautier

Administrateur de projets

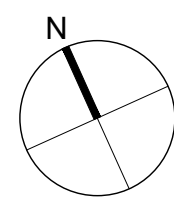
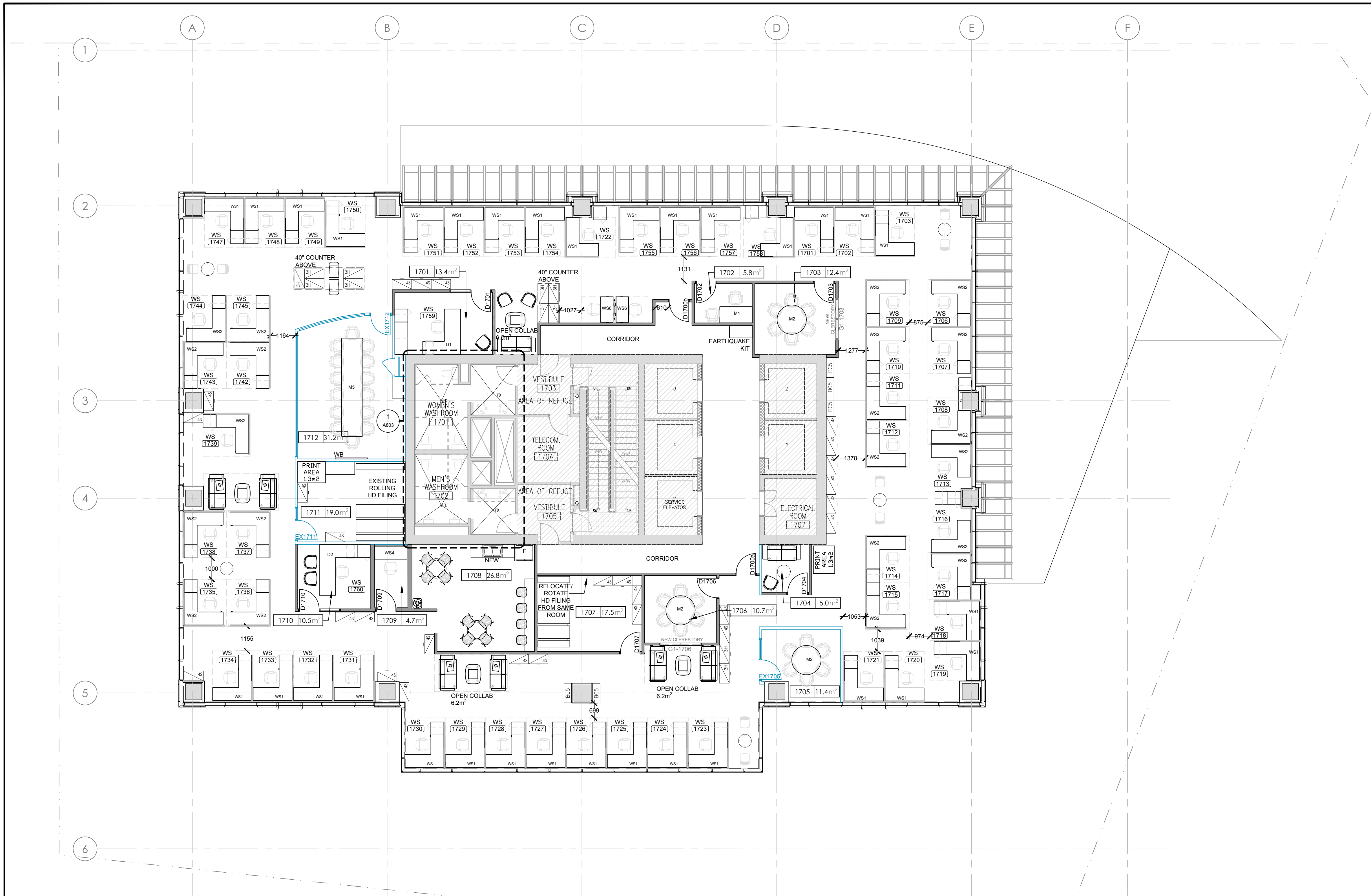
17129 / GOC504787

No. du projet

Drawing no.

A408

No. du dessin



BRANCHES

Communications (CB)
Corporate Services & Finance Branch (CSFB)
Enforcement (EB)
Environmental Protection Branch (EPB)
Canadian Wildlife Service (CWS)
Human Resources (HR)
Meteorological Services of Canada (MSC)
Science & Technology (S&T)
Regional Director General Office & Strategic Policy Branch
Shared Services Canada (SSC) MSC support
Undesignated Space (UDS)
TOTAL FTE / FLOOR

LEGEND

DFO SPACE
CORRIDOR
CORE
SHARED AREA

ROOM NAME

Room 0000 28.2m²

ROOM SIZE

ROOM NUMBER

BRANCH NAME

MSC-PSPC

BRANCH DESCRIPTION

FTE 21 SPS

SPECIAL PURPOSE SPACE

FTE NUMBER

WS (300) FREE WORKSTATION 1.5 m²

WS (300) FLEX WORKSTATION 3.0 m²

WS (300) FIXED WORKSTATION 4.5 m²

NEW CONSTRUCTION LEGEND:

EXISTING DOOR TO REMAIN
EXISTING WINDOW/ WALL TO REMAIN
NEW DOOR/ WINDOW/ WALL
SHADED AREA INDICATES BUILDING SPACE BEYOND PROJECT SCOPE OF WORK

EQUIPMENT DEFINITIONS

AV 60" AUDIOVISUAL DISPLAY
AV (A) AUDIOVISUAL DISPLAY (2 TYS ON ADJUSTABLE ARMS-NEW)
AV (B) AUDIOVISUAL DISPLAY (2 TYS ON WALL TO REPLACE OLD)
AV (C) AUDIOVISUAL DISPLAY (1 TYS ON ADJUSTABLE ARMS)
COPY PHOTO COPIER
FAX FAX MACHINE
MFD MULTI-FUNCTION DEVICE
V-C VIDEO CONFERENCE EQUIPMENT
WB-6 6' WHITE BOARD CW TRAY
WB-8 8' WHITE BOARD CW TRAY
WS WORK STATION

KITCHEN:

F FRIDGE/REFRIGERATOR
M MICROWAVE
S SINK

FURNITURE NOTE:

1 FURNITURE TO BE SUPPLIED AND INSTALLED BY OWNER.
2 MOVERS AND MOVE MANAGEMENT COORDINATION BY OWNER.
3 WHITEBOARDS TO BE SUPPLIED AND INSTALLED BY CONTRACTOR.

FILING STORAGE LEGEND:

3-HIGH - 36X18 FILING DRAWERS
5-HIGH - 36X18 FILING DRAWERS (SEISMICALLY RESTRAINED)
4-HIGH - 36X18 SECURE FILING DRAWERS (SEISMICALLY RESTRAINED)
OPTIMUM MEDIA SHELVING - 64X36X18
42" HIGH BOOKCASE
72" HIGH BOOKCASE (SEISMICALLY RESTRAINED)

PARTITION LEGEND:

P2 = 36"
P4 = 60"



Contractor to verify all dimensions & conditions on site and immediately notify the departmental representative of all discrepancies.

| 1 | Issued for Construction | 14 Dec 18 |
|-----------|--|-----------|
| revisions | description | date |
| A | A detail no. du detail | A |
| C | B location drawing no. sur dessin no. C drawing no. dessin no. | B C |

project project
ENVIRONMENT CANADA
Space Optimization

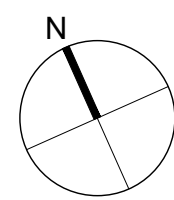
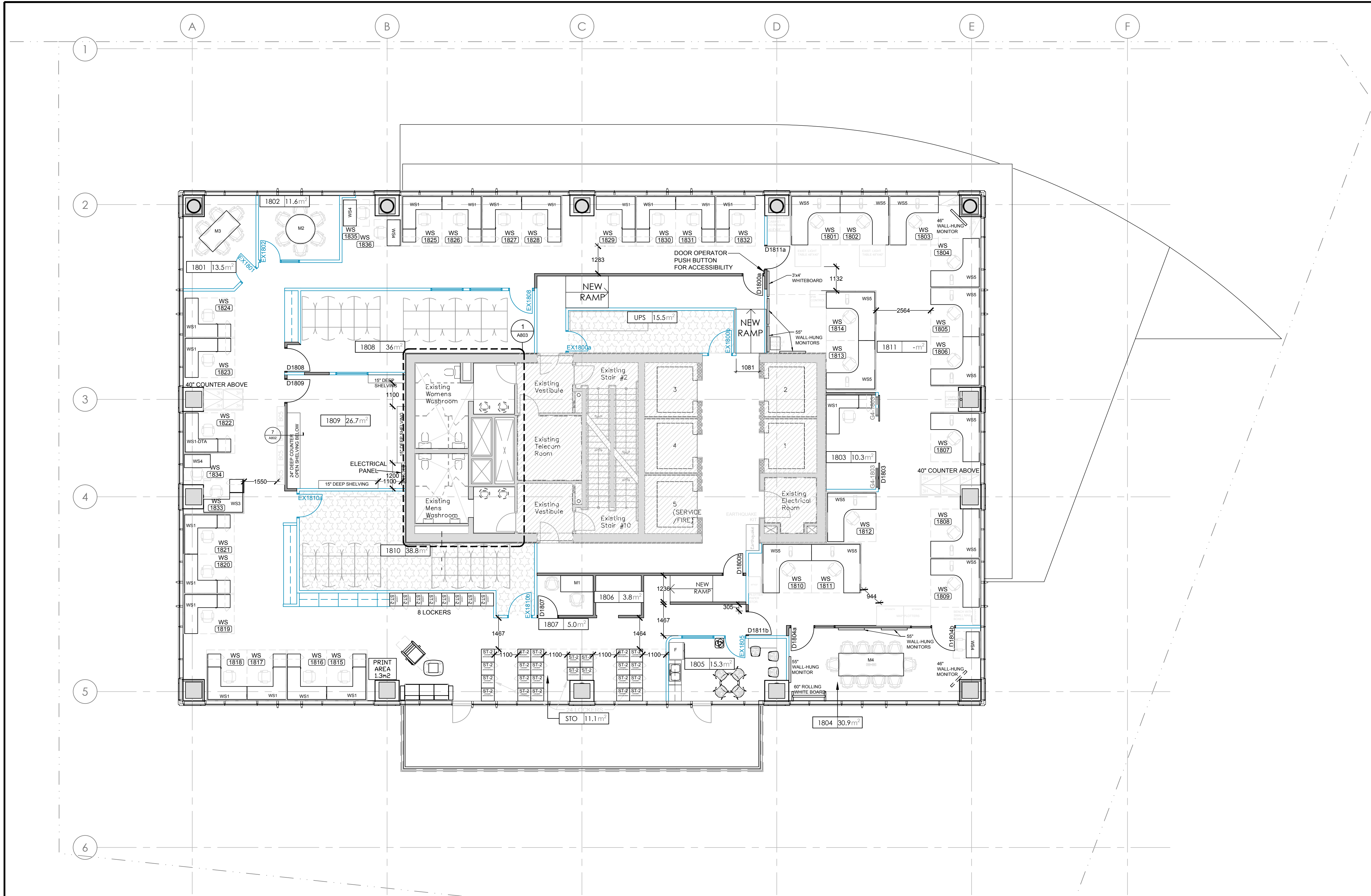
401 BARRARD STREET
VANCOUVER, BC

drawing dessin

NEW FURNITURE PLAN
LEVEL 17 - PHASE 7
SCALE - 1:100

Designed By Denis Gautier Conçu par
Date 2018/12/14 (yyyy/mm/dd)
Drawn By Sujata Arya Dessiné par
Date 2018/12/14 (yyyy/mm/dd)
Reviewed By James Emery Examiné par
Date 2018/12/14 (yyyy/mm/dd)
Approved By Approuvé par
Date (yyyy/mm/dd)
Tender Soumission
Project Manager Administrateur de projets
Project no. No. du projet
17129 / GOC504787

Drawing no. No. du dessin
A417



BRANCHES

Communications (CB)
Corporate Services & Finance Branch (CSFB)
Enforcement (EB)
Environmental Protection Branch (EPB)
Canadian Wildlife Service (CWS)
Human Resources (HR)
Meteorological Services of Canada (MSC)
Science & Technology (S&T)
Regional Director General Office & Strategic Policy Branch
Shared Services Canada (SSC) MSC support
Undesignated Space (UDS)
TOTAL FTE / FLOOR

LEGEND

DFO SPACE
CORRIDOR
CORE
SHARED AREA

ROOM NAME

Nome
0000 28 m²

ROOM SIZE

ROOM NUMBER

BRANCH NAME

MSC-PSPC

BRANCH DESCRIPTION

FTE 21 SPS

SPECIAL PURPOSE SPACE

FTE NUMBER

FREE WORKSTATION

WS (300) 1.5 m²

FLEX WORKSTATION

WS (300) 3.0 m²

FIXED WORKSTATION

WS (300) 4.5 m²

NEW CONSTRUCTION LEGEND:

EXISTING DOOR TO REMAIN
EXISTING WINDOW/ WALL TO REMAIN
NEW DOOR/ WINDOW/ WALL
SHADED AREA INDICATES BUILDING SPACE BEYOND PROJECT SCOPE OF WORK

EQUIPMENT DEFINITIONS

AV 60" AUDIOVISUAL DISPLAY
AV (A) AUDIOVISUAL DISPLAY (2 TYS ON ADJUSTABLE ARMS-NEW)
AV (B) AUDIOVISUAL DISPLAY (2 TYS ON WALL TO REPLACE OLD)
AV (C) AUDIOVISUAL DISPLAY (1 TYS ON ADJUSTABLE ARMS)
COPY PHOTO COPIER
FAX FAX MACHINE
MFD MULTI-FUNCTION DEVICE
V-C VIDEO CONFERENCE EQUIPMENT
WB-6 6' WHITE BOARD C/W TRAY
WB-8 8' WHITE BOARD C/W TRAY
WS WORK STATION

KITCHEN:

F FRIDGE/REFRIGRATOR
M MICROWAVE
S SINK

FURNITURE NOTE:

1 FURNITURE TO BE SUPPLIED AND INSTALLED BY OWNER.
2 MOVERS AND MOVE MANAGEMENT COORDINATION BY OWNER.
3 WHITEBOARDS TO BE SUPPLIED AND INSTALLED BY CONTRACTOR.

FILING STORAGE LEGEND:

3-HIGH - 36X18 FILING DRAWERS
5-HIGH - 36X18 FILING DRAWERS (SEISMICALLY RESTRAINED)
4-HIGH - 36X18 SECURE FILING DRAWERS (SEISMICALLY RESTRAINED)
OPTIMUM MEDIA SHELVING - 64X36X18
42" HIGH BOOKCASE
72" HIGH BOOKCASE (SEISMICALLY RESTRAINED)

PARTITION LEGEND:

P2 = 36"
P4 = 60"

Public Services and Procurement Canada

Services publics et Approvisionnement Canada

Real Property Branch

Direction générale des biens immobiliers

IREDALE ARCHITECTURE

220 - 12 Water Street
Vancouver, BC V6B 1A5
604 - 736 - 5581
Vancouver Victoria Calgary
iredale.ca

Contractor to verify all dimensions & conditions on site and immediately notify the departmental representative of all discrepancies.

| | | |
|-----------|---------------------------------------|-----------|
| 1 | Issued for Construction | 14 Dec 18 |
| revisions | description | date |
| A | A detail no. no. du detail | A |
| C | B location drawing no. sur dessin no. | B |
| | C drawing no. dessin no. | C |

project

ENVIRONMENT CANADA
Space Optimization

401 BARRARD STREET
VANCOUVER, BC

drawing

dessin

NEW FURNITURE PLAN

LEVEL 18 - PHASE 7

SCALE - 1:100

| | | |
|-----------------|-------------------|---------------------------|
| Designed By | Denis Gautier | Conçu par |
| Date | 2018/12/14 | (yyyy/mm/dd) |
| Drawn By | Sujata Arya | Dessiné par |
| Date | 2018/12/14 | (yyyy/mm/dd) |
| Reviewed By | James Emery | Examiné par |
| Date | 2018/12/14 | (yyyy/mm/dd) |
| Approved By | | Approuvé par |
| Date | | (yyyy/mm/dd) |
| Tender | | Soumission |
| Project Manager | Denis Gautier | Administrateur de projets |
| Project no. | | No. du projet |
| | 17129 / GOC504787 | |
| Drawing no. | | No. du dessin |
| | A418 | |