



RETURN BIDS TO:

RETOURNER LES SOUMISSIONS À:

Bid Receiving Public Works and Government
Services Canada/Réception des soumissions Travaux
publics et Services gouvernementaux Canada
Government of Canada Building
101 - 22nd Street East, Suite 110
Saskatoon
Saskatchewan
S7K 0E1
Bid Fax: (306) 975-5397

SOLICITATION AMENDMENT MODIFICATION DE L'INVITATION

The referenced document is hereby revised; unless otherwise
indicated, all other terms and conditions of the Solicitation
remain the same.

Ce document est par la présente révisé; sauf indication contraire,
les modalités de l'invitation demeurent les mêmes.

Comments - Commentaires

Vendor/Firm Name and Address
Raison sociale et adresse du
fournisseur/de l'entrepreneur

Issuing Office - Bureau de distribution

Public Works and Government Services
Canada/Réception des soumissions Travaux publics et
Services gouvernementaux Canada
Government of Canada Building
101 - 22nd Street East
Suite 110
Saskatoon
Saskatche
S7K 0E1

Title - Sujet Système de télévision par câble	
Solicitation No. - N° de l'invitation 21120-193016/A	Amendment No. - N° modif. 004
Client Reference No. - N° de référence du client 21120-193016	Date 2019-03-08
GETS Reference No. - N° de référence de SEAG PW-\$STN-191-5124	
File No. - N° de dossier STN-8-41074 (191)	CCC No./N° CCC - FMS No./N° VME
Solicitation Closes - L'invitation prend fin at - à 02:00 PM on - le 2019-03-20	
Time Zone Fuseau horaire Central Standard Time CST	
F.O.B. - F.A.B. Plant-Usine: <input type="checkbox"/> Destination: <input checked="" type="checkbox"/> Other-Autre: <input type="checkbox"/>	
Address Enquiries to: - Adresser toutes questions à: Gerstmar, Denise	Buyer Id - Id de l'acheteur stn191
Telephone No. - N° de téléphone (306) 241-1018 ()	FAX No. - N° de FAX (306) 975-5397
Destination - of Goods, Services, and Construction: Destination - des biens, services et construction: Stony Mountain Institution Correctional Services Canada Highway #7 North at Stony Mountain Stony Mountain MB R0C 3A0	

Instructions: See Herein

Instructions: Voir aux présentes

Delivery Required - Livraison exigée	Delivery Offered - Livraison proposée
Vendor/Firm Name and Address Raison sociale et adresse du fournisseur/de l'entrepreneur	
Telephone No. - N° de téléphone Facsimile No. - N° de télécopieur	
Name and title of person authorized to sign on behalf of Vendor/Firm (type or print) Nom et titre de la personne autorisée à signer au nom du fournisseur/ de l'entrepreneur (taper ou écrire en caractères d'imprimerie)	
Signature	Date

N° de l'invitation - Sollicitation No.
21120-193016/A

N° de la modif. - Amd. No.
004

Id de l'acheteur - Buyer ID
stn191

N° de réf. du client - Client Ref. No.
21120-193016

N° du dossier - File No.
STN-8-41074

FMS No./N° VME - CCC No./N° CCC

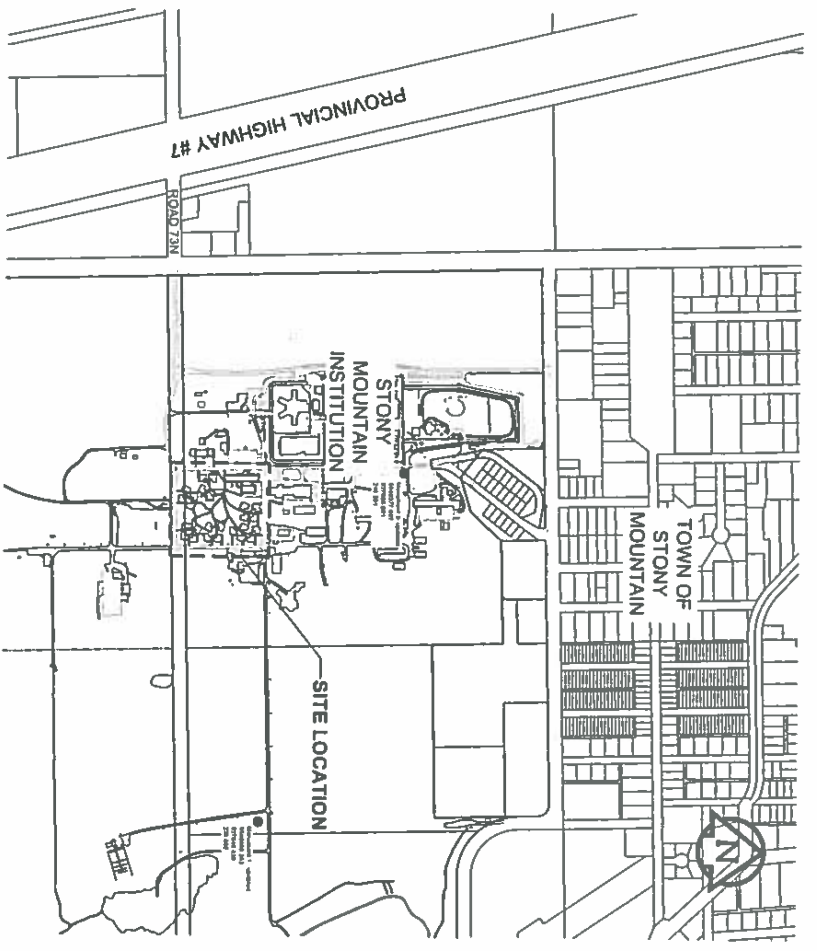
Cette modification est pour la sollicitation 21120-193016/A – Mise à niveau du système de télévision par câble (Manitoba).

Commentaire 1

Un projet d'aménagement paysager présenté par TPSGC pourrait avoir une incidence sur le Mise à niveau du système de télévision par câble. Le calendrier de ce projet est inconnu pour le moment. Les soumissionnaires pour le Mise à niveau du système de télévision par câble ont demandé des informations sur ce projet.

Veuillez suivre le lien ci-dessous pour plus d'informations sur le projet :

<https://achatsetventes.gc.ca/donnees-sur-l-provisionnement/appels-d-offres/PW-PWU-004-11543>



KEY PLAN

- 100 SITING
EMPLACEMENT
 - L-1001 - EXISTING CONDITIONS (General)
 - L-1002 - PATHWAY IMPROVEMENT
 - L-1003 - DETAILS
- 500 ELECTRICAL
ELECTRIQUE
 - E-5001 - ELECTRICAL PLAN
 - E-5002 - ELECTRICAL DETAILS
- 600 CIVIL
CIVIL
 - C-6001 - GRADING PLAN NORTH AREA OF SITE
 - C-6002 - GRADING PLAN SOUTH AND EAST AREA OF SITE

DO NOT SCALE DRAWINGS

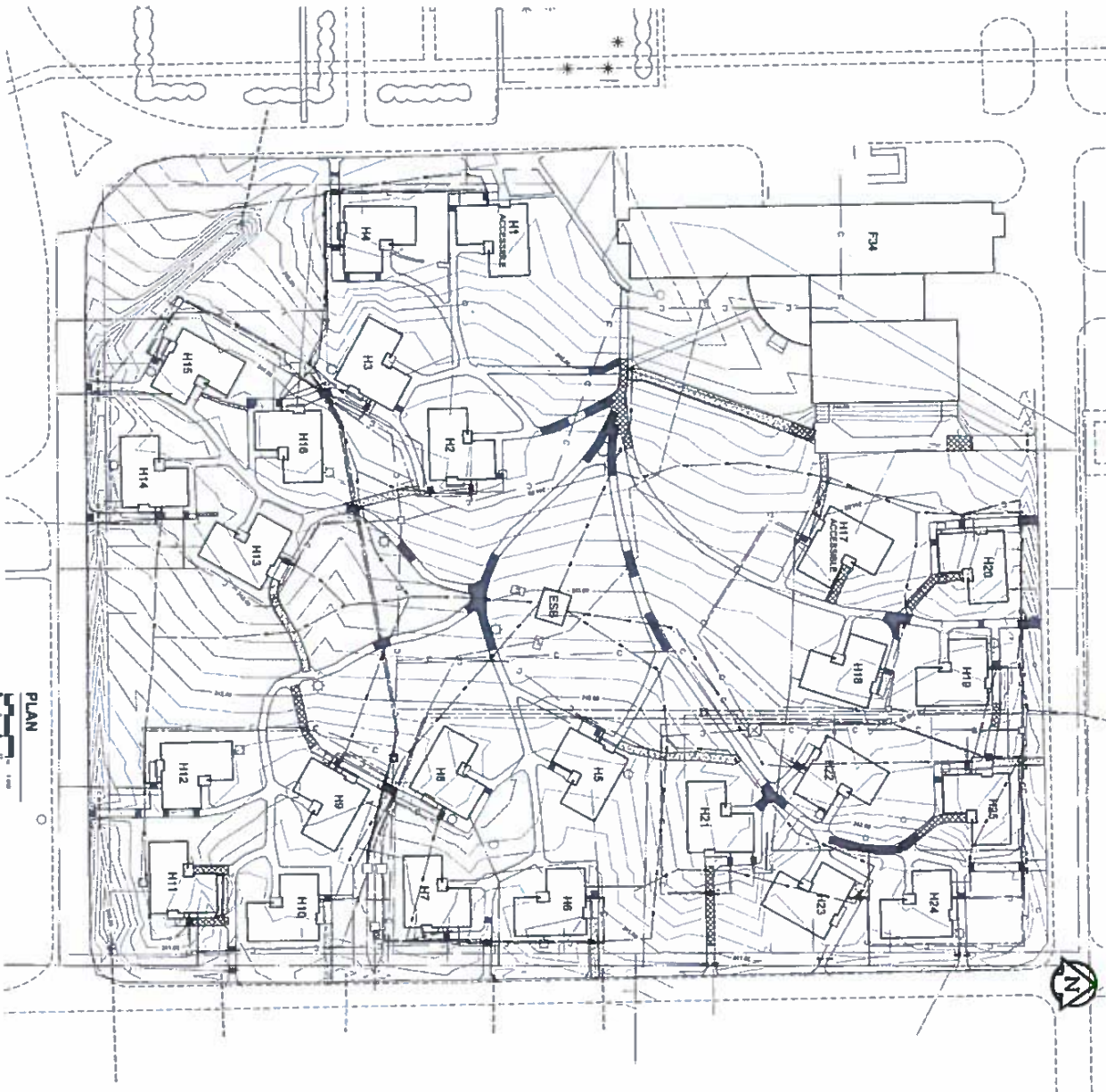
PUBLIC WORKS &
 GOVERNMENT SERVICES
 CANADA

WATERLOO, ONTARIO

STONY MOUNTAIN INSTITUTION
 LANDSCAPING
 MINIMUM HOUSING UNITS
 CONNECTORIAL SERVICE CANADA
 TOWN OF STONY MOUNTAIN, MB

COVER SHEET AND
 KEY PLAN

Project Number: 0303011001
 Drawing Number: G-0001
 Sheet Number: 0



PLAN
1:1000

- LEGEND**
- PATH, ASPHALT
 - PATH, CRACKED STONE
 - PATH, PATCHED ASPHALT
 - PATH, SLOPE > 5%
 - WALKWAY
 - WALL LIGHT
 - POST LIGHT
 - HOUSING UNIT
 - CANAL
 - CONTOUR 0.2 m AND GRADE
 - UNDERGROUND UTILITIES, SYSTEMS & SERVICES
 - ELECTRICAL
 - COMMUNICATION
 - WATER

GENERAL NOTES

1. ESR - ELECTRICAL SERVICE BUILDING
2. ESR - ELECTRICAL SERVICE BUILDING
3. ESR - ELECTRICAL SERVICE BUILDING
4. ESR - ELECTRICAL SERVICE BUILDING
5. ESR - ELECTRICAL SERVICE BUILDING
6. ESR - ELECTRICAL SERVICE BUILDING
7. ESR - ELECTRICAL SERVICE BUILDING
8. ESR - ELECTRICAL SERVICE BUILDING
9. ESR - ELECTRICAL SERVICE BUILDING
10. ESR - ELECTRICAL SERVICE BUILDING
11. ESR - ELECTRICAL SERVICE BUILDING
12. ESR - ELECTRICAL SERVICE BUILDING
13. ESR - ELECTRICAL SERVICE BUILDING
14. ESR - ELECTRICAL SERVICE BUILDING
15. ESR - ELECTRICAL SERVICE BUILDING
16. ESR - ELECTRICAL SERVICE BUILDING
17. ESR - ELECTRICAL SERVICE BUILDING
18. ESR - ELECTRICAL SERVICE BUILDING
19. ESR - ELECTRICAL SERVICE BUILDING
20. ESR - ELECTRICAL SERVICE BUILDING
21. ESR - ELECTRICAL SERVICE BUILDING
22. ESR - ELECTRICAL SERVICE BUILDING
23. ESR - ELECTRICAL SERVICE BUILDING
24. ESR - ELECTRICAL SERVICE BUILDING

AECOM

DO NOT SCALE DRAWINGS

PUBLIC WORKS & GOVERNMENT SERVICES CANADA

STONY MOUNTAIN INSTITUTION MINIMUM HOUSING UNITS

EXISTING CONDITIONS

1-1001



Real Property Services
 Brokerage Services
 Commercial Services
 Construction Services
 Development Services
 Financial Services
 Insurance Services
 Legal Services
 Marketing Services
 Management Services
 Mortgage Services
 Planning Services
 Research Services
 Security Services
 Training Services
 Transportation Services
 Utility Services
 Waste Management Services
 Water Management Services
 Zoning Services


 Certificate of Authorization
 ACCOCH Canada Ltd.
 No. 4877 Date: March 29, 2005

DO NOT SCALE DRAWINGS

**PUBLIC WORKS &
GOVERNMENT SERVICES
CANADA**

WARNING, MAINTENANCE

STONY MOUNTAIN INSTITUTION

CONNECTIONAL SERVICE CANADA

COMMERCIAL SERVICE CANADA
STORY MOUNTAIN INC.

Index

Estimated by/created by

Source: *Reference 10*

5

For more information, contact:
For U.S.:

Hotel, restaurant and catering business

Volume 1, Number 1, Spring 1994

RESEARCH WORKERS & GOVERNMENT SERVANTS (CANNADA)

1992

PATHWAY IMPROVEMENT

PLAN

1

10

--	--

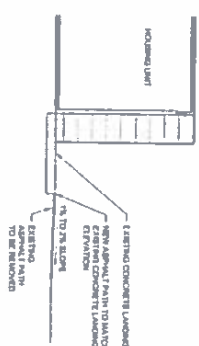
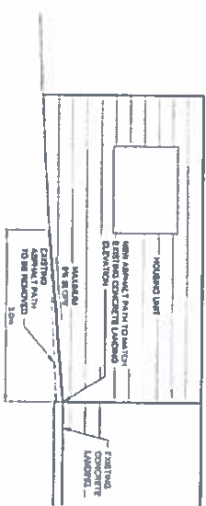
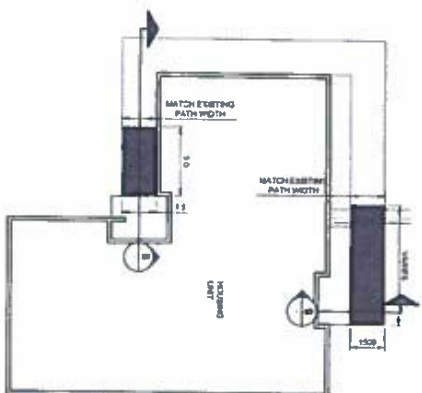
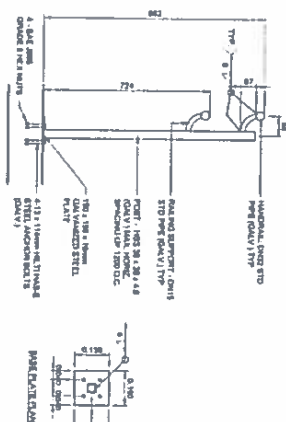
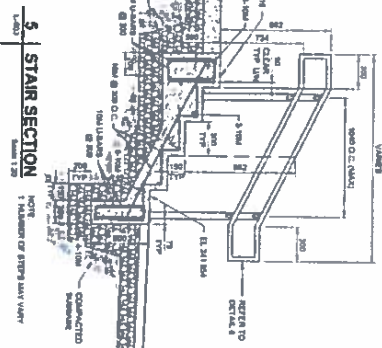
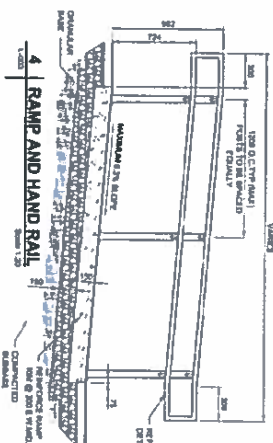
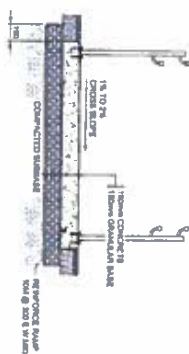
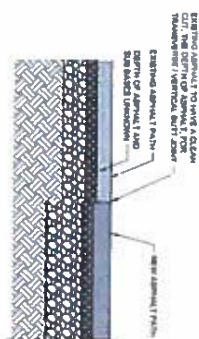
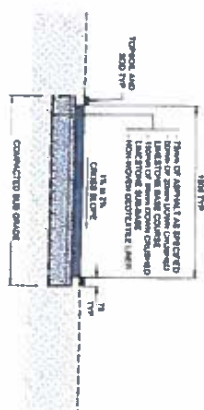
[illegible]

PLANS 16.001	L-1002	-0
--------------	--------	----

21

[illegible]

1000-4-0001





146 147 148 149 150 151 152 153 154 155 156 157 158 159 160 161 162 163 164 165 166 167 168 169 170 171 172 173 174 175 176 177 178 179 180 181 182 183 184 185 186 187 188 189 190 191 192 193 194 195 196 197 198 199 200 201 202 203 204 205 206 207 208 209 210 211 212 213 214 215 216 217 218 219 220 221 222 223 224 225 226 227 228 229 230 231 232 233 234 235 236 237 238 239 240 241 242 243 244 245 246 247 248 249 250 251 252 253 254 255 256 257 258 259 260 261 262 263 264 265 266 267 268 269 270 271 272 273 274 275 276 277 278 279 280 281 282 283 284 285 286 287 288 289 290 291 292 293 294 295 296 297 298 299 300 301 302 303 304 305 306 307 308 309 310 311 312 313 314 315 316 317 318 319 320 321 322 323 324 325 326 327 328 329 330 331 332 333 334 335 336 337 338 339 340 341 342 343 344 345 346 347 348 349 350 351 352 353 354 355 356 357 358 359 360 361 362 363 364 365 366 367 368 369 370 371 372 373 374 375 376 377 378 379 380 381 382 383 384 385 386 387 388 389 390 391 392 393 394 395 396 397 398 399 400 401 402 403 404 405 406 407 408 409 410 411 412 413 414 415 416 417 418 419 420 421 422 423 424 425 426 427 428 429 430 431 432 433 434 435 436 437 438 439 440 441 442 443 444 445 446 447 448 449 450 451 452 453 454 455 456 457 458 459 460 461 462 463 464 465 466 467 468 469 470 471 472 473 474 475 476 477 478 479 480 481 482 483 484 485 486 487 488 489 490 491 492 493 494 495 496 497 498 499 500 501 502 503 504 505 506 507 508 509 510 511 512 513 514 515 516 517 518 519 520 521 522 523 524 525 526 527 528 529 530 531 532 533 534 535 536 537 538 539 540 541 542 543 544 545 546 547 548 549 550 551 552 553 554 555 556 557 558 559 560 561 562 563 564 565 566 567 568 569 570 571 572 573 574 575 576 577 578 579 580 581 582 583 584 585 586 587 588 589 590 591 592 593 594 595 596 597 598 599 600 601 602 603 604 605 606 607 608 609 610 611 612 613 614 615 616 617 618 619 620 621 622 623 624 625 626 627 628 629 630 631 632 633 634 635 636 637 638 639 640 641 642 643 644 645 646 647 648 649 650 651 652 653 654 655 65
--

LUMINANCE SCHEDULE			
STIMULUS	WAVELENGTH	WAVELENGTH	WAVELENGTH
1	LED	470 nm	LED
2	LED	470 nm	LED
3	LED	470 nm	LED
4	LED	470 nm	LED
5	LED	470 nm	LED
6	LED	470 nm	LED
7	LED	470 nm	LED
8	LED	470 nm	LED
9	LED	470 nm	LED
10	LED	470 nm	LED
11	LED	470 nm	LED
12	LED	470 nm	LED
13	LED	470 nm	LED
14	LED	470 nm	LED
15	LED	470 nm	LED
16	LED	470 nm	LED
17	LED	470 nm	LED
18	LED	470 nm	LED
19	LED	470 nm	LED
20	LED	470 nm	LED
21	LED	470 nm	LED
22	LED	470 nm	LED
23	LED	470 nm	LED
24	LED	470 nm	LED
25	LED	470 nm	LED
26	LED	470 nm	LED
27	LED	470 nm	LED
28	LED	470 nm	LED
29	LED	470 nm	LED
30	LED	470 nm	LED
31	LED	470 nm	LED
32	LED	470 nm	LED
33	LED	470 nm	LED
34	LED	470 nm	LED
35	LED	470 nm	LED
36	LED	470 nm	LED
37	LED	470 nm	LED
38	LED	470 nm	LED
39	LED	470 nm	LED
40	LED	470 nm	LED
41	LED	470 nm	LED
42	LED	470 nm	LED
43	LED	470 nm	LED
44	LED	470 nm	LED
45	LED	470 nm	LED
46	LED	470 nm	LED
47	LED	470 nm	LED
48	LED	470 nm	LED
49	LED	470 nm	LED
50	LED	470 nm	LED
51	LED	470 nm	LED
52	LED	470 nm	LED
53	LED	470 nm	LED
54	LED	470 nm	LED
55	LED	470 nm	LED
56	LED	470 nm	LED
57	LED	470 nm	LED
58	LED	470 nm	LED
59	LED	470 nm	LED
60	LED	470 nm	LED
61	LED	470 nm	LED
62	LED	470 nm	LED
63	LED	470 nm	LED
64	LED	470 nm	LED
65	LED	470 nm	LED
66	LED	470 nm	LED
67	LED	470 nm	LED
68	LED	470 nm	LED
69	LED	470 nm	LED
70	LED	470 nm	LED
71	LED	470 nm	LED
72	LED	470 nm	LED
73	LED	470 nm	LED
74	LED	470 nm	LED
75	LED	470 nm	LED
76	LED	470 nm	LED
77	LED	470 nm	LED
78	LED	470 nm	LED
79	LED	470 nm	LED
80	LED	470 nm	LED
81	LED	470 nm	LED
82	LED	470 nm	LED
83	LED	470 nm	LED
84	LED	470 nm	LED
85	LED	470 nm	LED
86	LED	470 nm	LED
87	LED	470 nm	LED
88	LED	470 nm	LED
89	LED	470 nm	LED
90	LED	470 nm	LED
91	LED	470 nm	LED
92	LED	470 nm	LED
93	LED	470 nm	LED
94	LED	470 nm	LED
95	LED	470 nm	LED
96	LED	470 nm	LED
97	LED	470 nm	LED
98	LED	470 nm	LED
99	LED	470 nm	LED
100	LED	470 nm	LED

POLES	
BRAND	UNIVERSAL PAPER INDUSTRIES
WAPCD	REG 1000-4
BATCH	REG 1000-4
INSTR.	REG 1000-4

CSO	DESCRIPTION	LOAD	TIME	LOAD	DESCRIPTION	CSO
1	2	3	4	5	6	7
81	RECEIVE FROM CREDIT	100	10	100	RECEIVE FROM CREDIT	81
82	RECEIVE FROM CREDIT	100	10	100	RECEIVE FROM CREDIT	82
83	RECEIVE FROM CREDIT	100	10	100	RECEIVE FROM CREDIT	83
84	RECEIVE FROM CREDIT	100	10	100	RECEIVE FROM CREDIT	84
85	RECEIVE FROM CREDIT	100	10	100	RECEIVE FROM CREDIT	85
86	RECEIVE FROM CREDIT	100	10	100	RECEIVE FROM CREDIT	86
87	RECEIVE FROM CREDIT	100	10	100	RECEIVE FROM CREDIT	87
88	RECEIVE FROM CREDIT	100	10	100	RECEIVE FROM CREDIT	88
89	RECEIVE FROM CREDIT	100	10	100	RECEIVE FROM CREDIT	89
90	RECEIVE FROM CREDIT	100	10	100	RECEIVE FROM CREDIT	90
91	RECEIVE FROM CREDIT	100	10	100	RECEIVE FROM CREDIT	91
92	RECEIVE FROM CREDIT	100	10	100	RECEIVE FROM CREDIT	92
93	RECEIVE FROM CREDIT	100	10	100	RECEIVE FROM CREDIT	93
94	RECEIVE FROM CREDIT	100	10	100	RECEIVE FROM CREDIT	94
95	RECEIVE FROM CREDIT	100	10	100	RECEIVE FROM CREDIT	95
96	RECEIVE FROM CREDIT	100	10	100	RECEIVE FROM CREDIT	96
97	RECEIVE FROM CREDIT	100	10	100	RECEIVE FROM CREDIT	97
98	RECEIVE FROM CREDIT	100	10	100	RECEIVE FROM CREDIT	98
99	RECEIVE FROM CREDIT	100	10	100	RECEIVE FROM CREDIT	99
100	RECEIVE FROM CREDIT	100	10	100	RECEIVE FROM CREDIT	100

[illegible]

ESB BUILDING MOUNTING

Diagram illustrating two methods of ESB building mounting:

- Top Method:** Shows a horizontal mounting on a wall. Labels include:
 - HOT, ALL POSITIVE WIRE
 - HOT SWITCH AND CONTROLS
 - RECORD CLONE TO DOOR
- Bottom Method:** Shows a vertical mounting. Label includes:
 - HOT WIRE (OR POSITIVE BATTERY)

The diagram consists of two parts: a cross-sectional view on the left and a plan view on the right.

- Cross-Section View:** Shows a vertical section through a concrete slab. A horizontal reinforcement bar is embedded in the slab. The bar has a diameter labeled as Ø10. The slab thickness is indicated by dimensions: 100 mm at the top, 180 mm in the middle, and 70 mm at the bottom. The total height of the slab is 350 mm. The bar is positioned such that it is 100 mm from the top surface and 180 mm from the bottom surface. The label "REINFORCED & 180" points to the bar. Another label "REINFORCE WITH BARS Ø 10" points to the bar. The label "PLAN" is written vertically next to the bar. The label "SLAB 100" points to the top surface of the slab. The label "THICKNESS OF SLAB" points to the 180 mm dimension. The label "Ø10" points to the bar diameter. The label "100" points to the top slab thickness. The label "180" points to the middle slab thickness. The label "70" points to the bottom slab thickness. The label "350" points to the total slab height.
- Plan View:** Shows a circular cross-section of the slab. It features a central circle representing the reinforcement bar, surrounded by concentric circles representing the slab's profile. The label "PLAN" is written horizontally across the center of the view.

1. POLLS SHALL BE TAKEN PERIODICALLY ON EACH AT DIRECTIONAL CONTROL.
2. CONCRETE FILLING IS TO BE 30 MM AGGREGATE, 4% AIR, UNIMULSED POLYMER, 100 TO 100 MM.
3. MASONRY IS TO BE POLYMER AND SPECIFIED TO BE 100 MM OR 150 MM AGGREGATE.
4. TOP 400 MM OF MASONRY IS TO BE POLYMER AND MASONRY IS TO BE POLYMER.
5. LIFTING AND PLACING SHALL BE REQUIRED, HEIGHT OF MASONRY IS TO BE 100 MM CONCRETE AT THE POLLS.

HOUSING MOUNTING

AECOM

REAL PROPERTY SERVICES
Midwest Region
SERVICES MANAGER
Reports to President



ASACOM
 Committee of Accreditation
 687744 (January 11)
 Box 4917 Udon

DO NOT SCALE DRAWINGS

**PUBLIC WORKS &
GOVERNMENT SERVICES
CANADA**

WINTERFELD, MAURITON

**STONY MOUNTAIN INSTITUTION
LANDSCAPING
MINIMUM HOUSING UNITS**

CONCESSIONS, SERVICE EXPENSES
STREET MERCHANTS

1144

THE NEW YORK PUBLIC LIBRARY

1

E-5002

1

Keywords:

1-1
 AECOM
 1000 SHEPPARD AVENUE EAST
 SUITE 1000
 VICTORIA, BC V8W 2M5
 TEL: 250-363-8888
 FAX: 250-363-8889
 WWW.AECOM.CA

AECOM

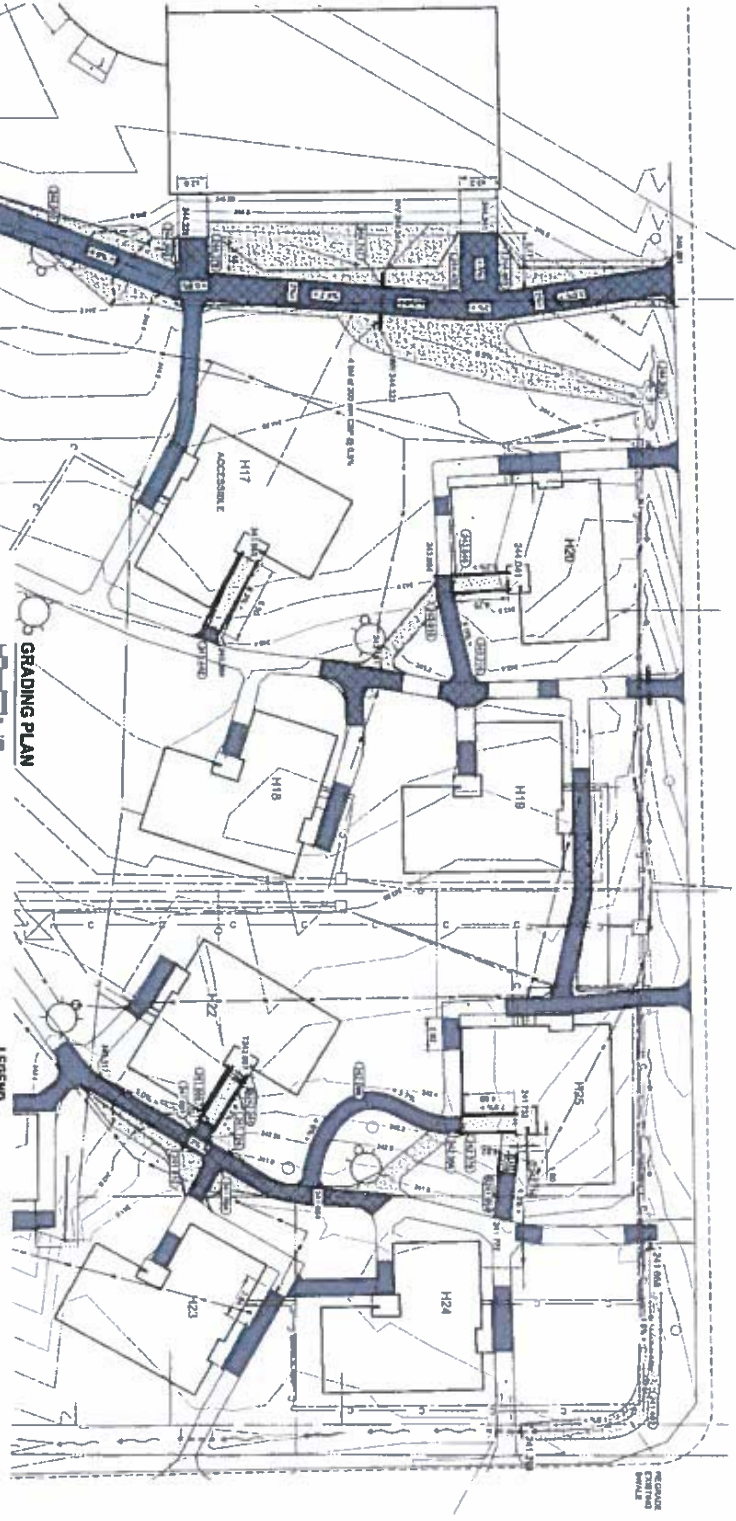
DO NOT SCALE DRAWINGS
 DESIGNER: AECOM
 CHECKED: AECOM
 DATE: 2010-05-10

PUBLIC WORKS & GOVERNMENT SERVICES CANADA

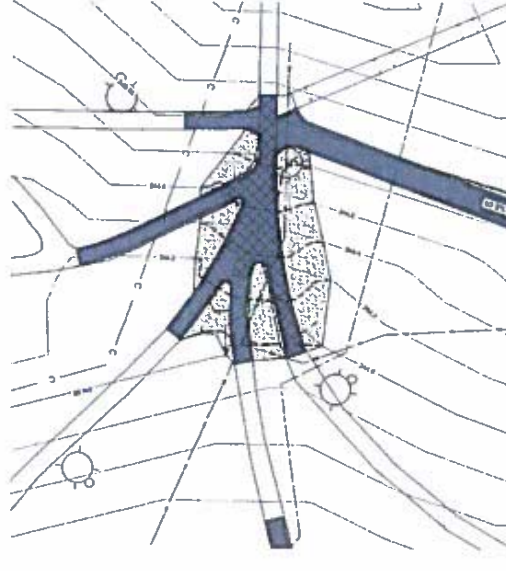
**STONY MOUNTAIN INSTITUTION
 MINIMAL HOUSING UNITS
 STONY MOUNTAIN, ALBERTA**

**GRADING PLAN
 NORTH ARD OF SITE**

**C-8001
 0**



GRADING PLAN



KEY PLAN

- LEGEND**
- EXISTING ELEVATION
 - PROPOSED ELEVATION
 - EXISTING DITCH
 - PROPOSED SWALE / DITCH
 - EXISTING CULVERT
 - PROPOSED CULVERT
 - EXISTING PATH TO BE REMOVED
 - EXISTING PATH TO BE REPAIRED
 - REPAIRED AND ASPHALT
 - CONCRETE PAVEMENT WITH RAILINGS
 - SOIL, 100mm TOPSOIL AND CLEAN FILL
 - NEW POLE LIGHT
 - HOUSING UNIT
 - EXISTING CONTOUR
 - PROPOSED CONTOUR
 - EXISTING TRANSCUTTER
 - ELECTRICAL BOLS
 - ELECTRICAL
 - COMMUNICATION
 - GAS
 - WATER
- UNDERGROUND UTILITIES SYSTEMS & SERVICES**
- EXISTING CONTOUR
 - PROPOSED CONTOUR
 - EXISTING TRANSCUTTER
 - ELECTRICAL BOLS
 - ELECTRICAL
 - COMMUNICATION
 - GAS
 - WATER

