

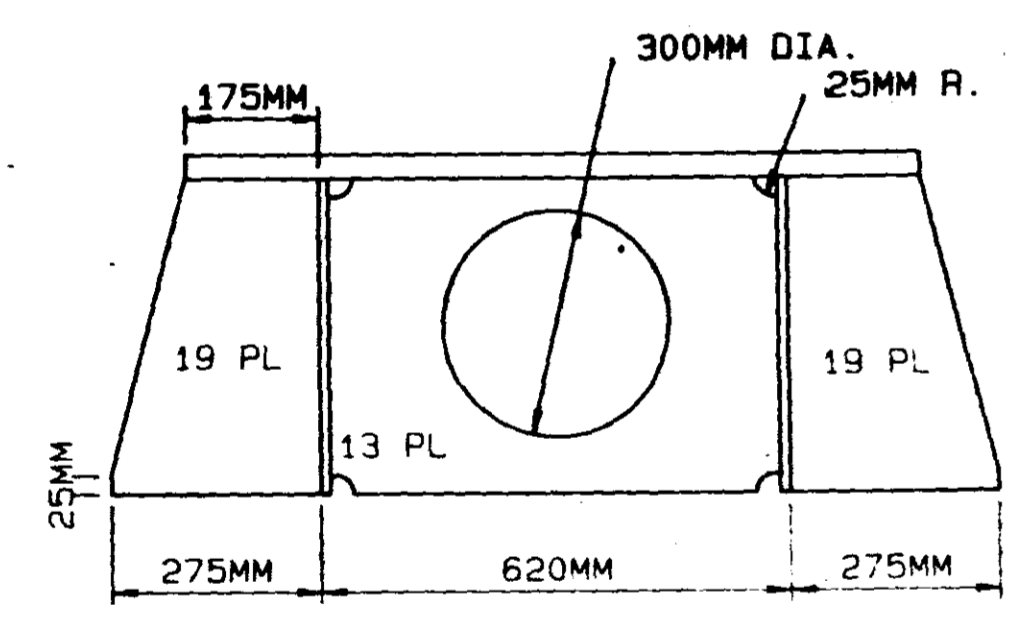
PLAN
OF TOP PLATE

PLAN
WITH
TOP PLATE REMOVED

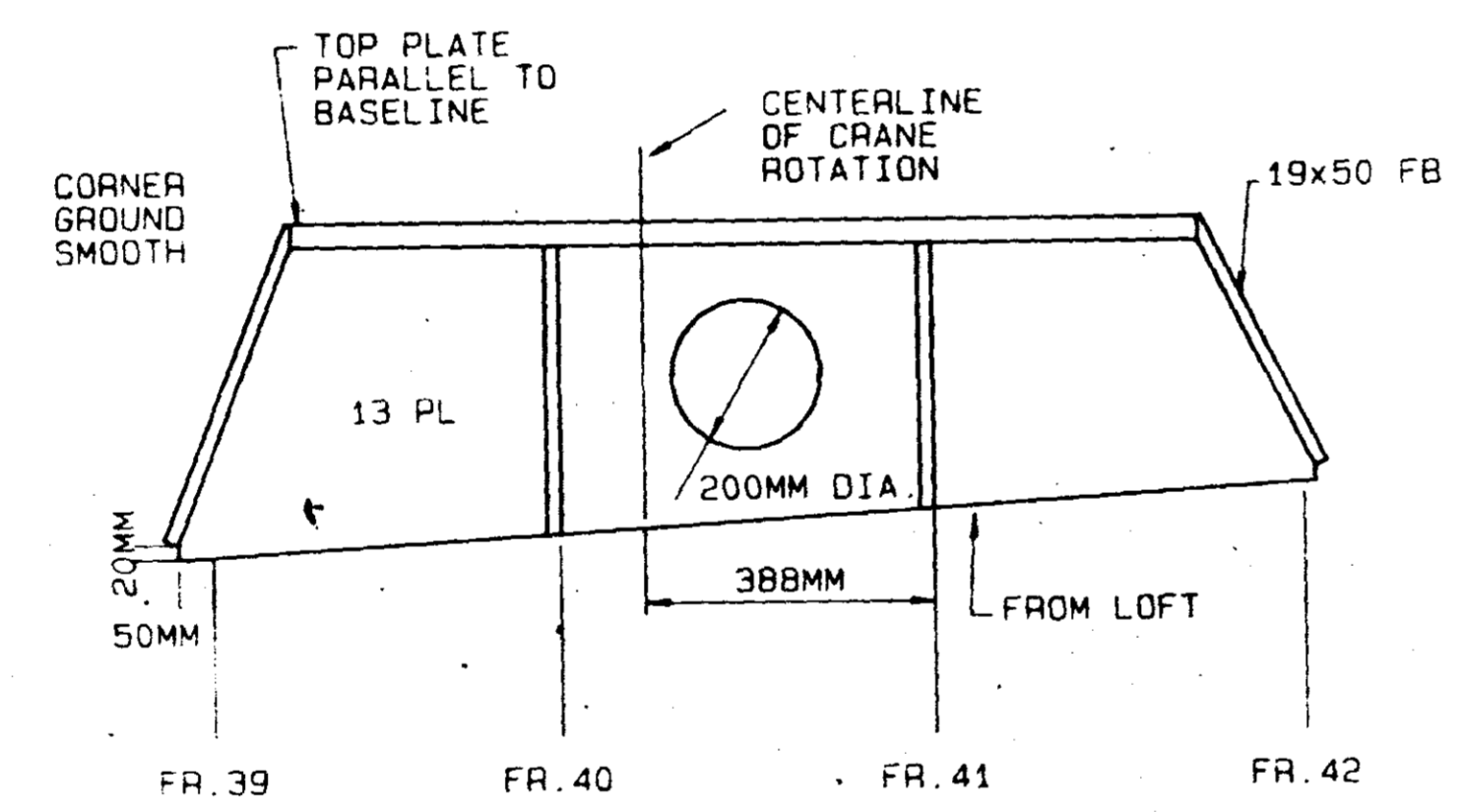
NOTES

- 1) TOTAL MOMENT AT BASE DUE TO LOAD, WEIGHTS AND 30% INERTIA FORCES 249 kNm
- 2) MAXIMUM FORCE AT ANY HOLDING DOWN BOLTS DUE TO ABOVE MOMENT 204kN
- 3) BOLT DIMENSION M30
- 4) 8 (EIGHT) BOLTS REQUIRED
- 5) BOLT PROPERTY CLASS 8.8 (800N/mm²)
- 6) CRANE PARTICULARS

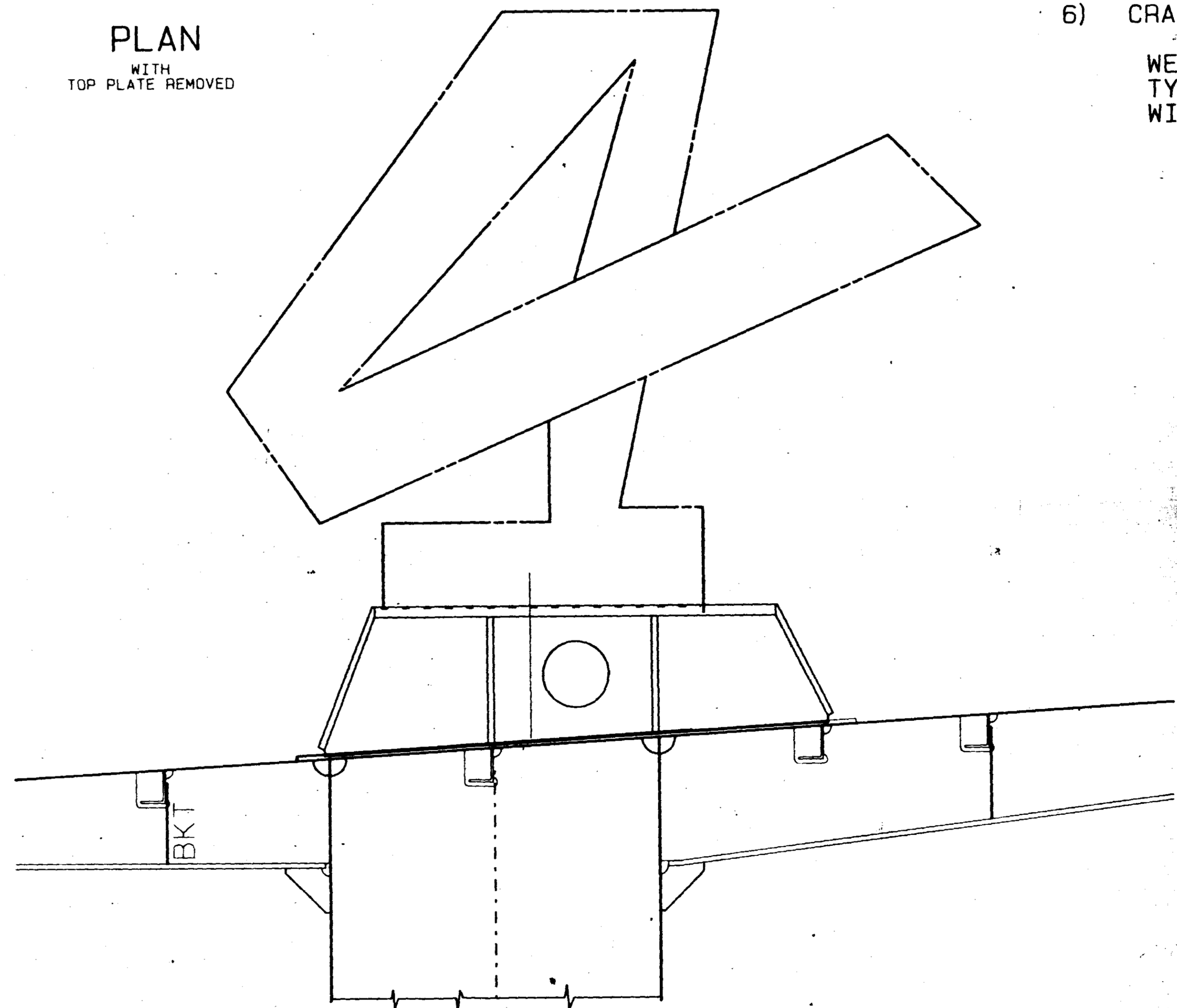
WEIGHT 3083kg.
TYPE HIAB 180 "SEA CRANE"
WINCH CAP. 2 tonne



SECTION
AT
FRAME No. 40
FRAME 41 SIMILAR



ELEVATION
OF
STBD. SIDE
(PORT SIDE SIMILAR)



CENTERLINE
ELEVATION

NOTE TO BUILDER:

- 1) IF A DIFFERENT CRANE IS CHOSEN, THE SEATING WILL HAVE TO BE SUITABLY ADJUSTED.
- 2) CHECK ACTUAL CRANE DIMENSIONS BEFORE COMMITTING WORK.

Rev No	Révisions	Date
App'd/ App'n		
Date		
Canadian Coast Guard / Garde côtière canadienne		
Vessel / Navire: TYPE 'F' UTILITY CRAFT		
Drg. Title / Dess. titre: DECK CRANE ARRANGEMENT		
Date: 11/83	Scale/Échelle: 1:10	Rev.
Contractor Drg. No. / Entrepreneur dess. No. 42-83-405		

CGS IDENT. NO. CSVT-F-83-405