

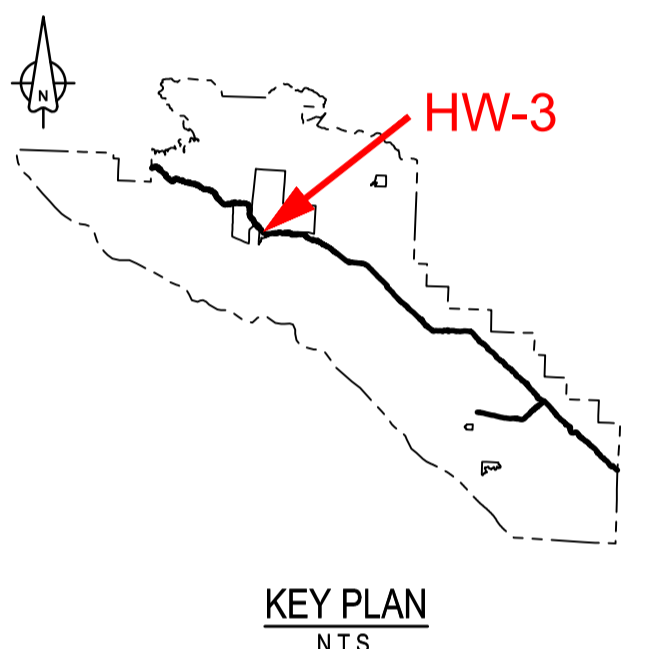
PROFILE  
1:500H 1:50V

PACIFIC TRAVERSE TRAIL GENERAL NOTES:

- SURVEY DATA IS BASED UPON THE UTM NAD83 COORDINATE SYSTEM.
- THE CONTRACTOR SHALL ADHERE TO ALL ENVIRONMENTAL REGULATIONS AS SPECIFIED IN THE CONTRACT.
- THE FINAL TRAIL ALIGNMENT SHALL BE ESTABLISHED IN THE FIELD BY DEPARTMENTAL REPRESENTATIVE.
- EXACT LOCATIONS AND SIZES OF RETAINING WALLS SHOWN IN PLAN TO BE CONFIRMED IN FIELD BY DEPARTMENTAL REPRESENTATIVE.
- FOR TYPICAL TRAIL SECTIONS SEE DRAWINGS T-40.1, T-40.2, T-41, T-43, T-44 & T-46
- FOR HAND RAILS AND ACCESS BARRIERS SEE DRAWING T-46
- FOR CONSTRUCTION SIGNAGE DRAWINGS SEE DRAWING HW-4 & HW-5
- FOR CONSTRUCTION DRAWING TYPICAL DETAILS SEE DRAWING HW-6
- FOR BRIDGES SEE STRUCTURAL DRAWINGS S-1.1 TO S-5.11
- FOR RETAINING WALLS AND FILL SLOPES SEE DRAWINGS W-4.1 TO W-4.3 & W-5.1 TO W-5.6
- FOR TRAFFIC SIGNAGE DETAILS REFER TO SPECIFICATION: TRAFFIC SIGNAGE 32 17 25
- FOR PAVEMENT MARKING REFER TO SPECIFICATION: PAVEMENT MARKING 32 17 23
- FOR REMOVAL OF PAVEMENT MARKINGS REFER TO SPECIFICATION: REMOVAL OF PAVEMENT MARKINGS 32 10 11
- FOR ASPHALT PAVEMENT REFER TO SPECIFICATION: ASPHALT PAVING 32 12 16
- FOR PAVEMENT TACK COAT REFER TO SPECIFICATION: ASPHALT TACK COAT 32 12 13.16
- FOR TRAFFIC BARRIER SPECIFICATIONS REFER TO SPECIFICATION: TRAFFIC BARRIERS 34 17 13
- THE CONTRACTOR MUST NOT LOCATE ANY EQUIPMENT, LABOUR OR MATERIALS WITHIN THE FIRST NATION RESERVE BOUNDARIES
- SEE ALSO SCHOONER COVE PARKING LOT DWG PL-2.1.

LEGEND

- PROPOSED LIMIT OF CLEARING
- PROPOSED SAW CUT
- EXISTING EDGE OF ASPHALT
- PROPOSED CONCRETE ROAD SIDE BARRIER
- PROPOSED RETAINING WALL
- EXISTING CONCRETE FENCE
- PROPERTY LINE
- SIGN
- EXISTING UTILITY POLE
- EXISTING CULVERT
- EXISTING MANHOLE
- PROPOSED NEW PAVEMENT



Revision/	Description/Description	Date/Date
3	ISSUED FOR TENDER	18/12/2018
2	ISSUED FOR TENDER	26/11/2018
1	ISSUED FOR TENDER	30/11/2017
0	ISSUED FOR TENDER	06/11/2017

Client/client  
Parks Canada L'Agence Parcs  
Agency Canada  
Western and Northern Region Ouest et Nord du Canada

Project title/Titre du projet  
TOFINO  
PACIFIC RIM  
NATIONAL PARK RESERVE  
?apsçiiik fasii  
(Ups-cheek ta-shee)  
"Going in the right  
direction on the trail"

Consultant Signature Only  
Designed by/Concept par  
DON CHALMERS / 2017-06  
Drawn by/Dessiné par  
DAVID COX / 2017-11  
PCA Project Manager/Technical Authority  
Administrateur de Projets APC  
JACKIE HICKS

Drawing title/Titre du dessin  
?apsçiiik fasii (Ups-cheek ta-shee)  
"Going in the right direction on the trail"  
HIGHWAY 4 PLAN AND PROFILE  
ESOWISTA CURVE  
STA 75+850 TO 76+160

Project No./No. du projet PCA #1522	Sheet/Feuille HW-3 OF 19	Revision no./Révision no. 3
--	--------------------------------	--------------------------------

