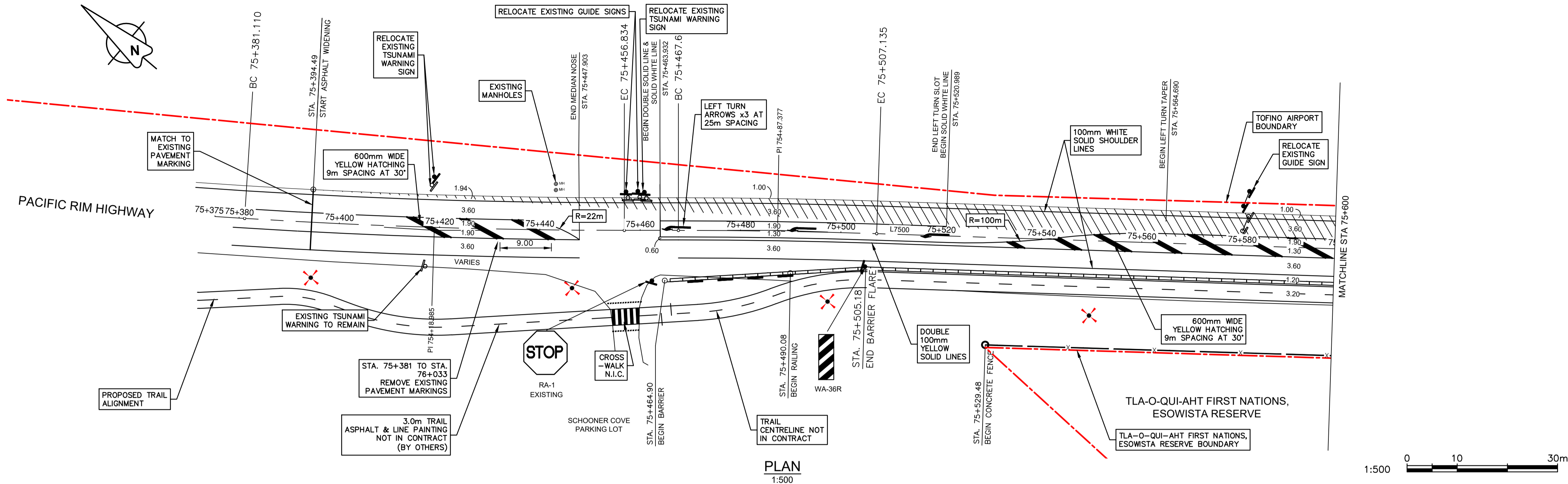
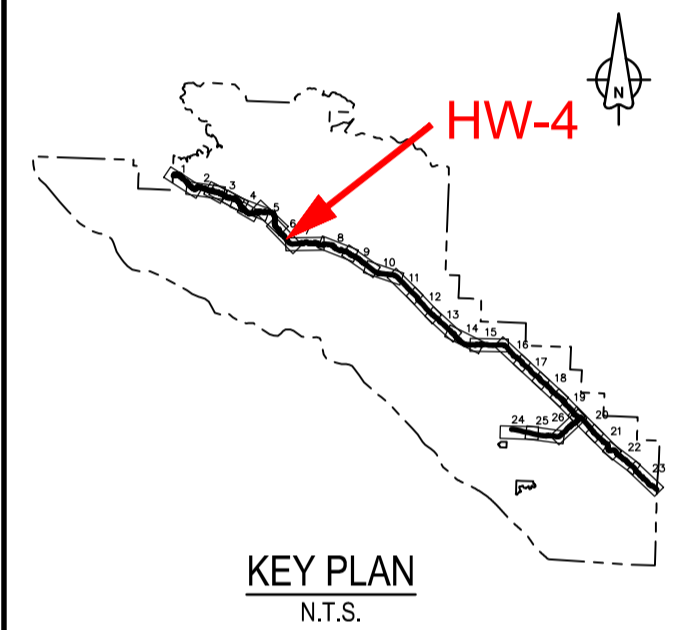
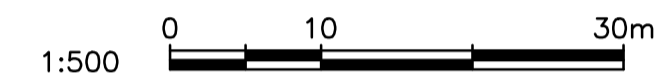


PARSONS



PLAN
1:500



KEY PLAN
N.T.S.

| Revision/ | Description/Description | Date/Date |
|-----------|-------------------------|------------|
| 3 | ISSUED FOR TENDER | 18/12/2016 |
| 2 | ISSUED FOR TENDER | 26/11/2016 |
| 1 | ISSUED FOR TENDER | 30/11/2017 |
| 0 | ISSUED FOR TENDER | 06/11/2017 |

| | |
|---------------|--|
| Client/client | Parks Canada Agency L'Agence Parcs Canada Western and Northern Region Ouest et Nord du Canada |
|---------------|--|

Project title/Titre du projet
TOFINO
PACIFIC RIM NATIONAL PARK RESERVE
ʔapsc̓iik fasii
“Going in the right direction on the trail”

Consultant Signature Only
Designed by/Concept par
DON CHALMERS / 2017-06
Drawn by/Dessiné par
DAVID COX / 2017-11
PCA Project Manager/Technical Authority
Administrateur de Projets APC
JACKIE HICKS

Drawing title/Titre du dessin
ʔapsc̓iik fasii (Ups-cheek ta-shee)
“Going in the right direction on the trail”
HIGHWAY 4 PAVEMENT MARKINGS AND SIGNAGE PLANS
ESOWISTA CURVE
STA 75+400 TO 75+850

| | | |
|---|---------------------------------------|---------------------------------------|
| Project No./No. du projet PCA #1522 | Sheet/Feuille HW-4 OF 19 | Revision no./Loi Révision 3 |
|---|---------------------------------------|---------------------------------------|

PACIFIC TRAVERSE TRAIL GENERAL NOTES:

1. SURVEY DATA IS BASED UPON THE UTM NAD83 COORDINATE SYSTEM.
2. THE CONTRACTOR SHALL ADHERE TO ALL ENVIRONMENTAL REGULATIONS AS SPECIFIED IN THE CONTRACT.
3. THE FINAL TRAIL ALIGNMENT SHALL BE ESTABLISHED IN THE FIELD BY DEPARTMENTAL REPRESENTATIVE.
4. EXACT LOCATIONS AND SIZES OF RETAINING WALLS SHOWN IN PLAN TO BE CONFIRMED IN FIELD BY DEPARTMENTAL REPRESENTATIVE.
5. FOR TYPICAL TRAIL SECTIONS SEE DRAWING T-40.1, T-40.2, T-41, T-43, T-44 & T-46
6. FOR HAND RAILS AND ACCESS BARRIERS SEE DRAWING T-46
7. FOR CONSTRUCTION SIGNAGE DRAWINGS SEE DRAWING HW-4 & HW-5
8. FOR CONSTRUCTION DRAWING TYPICAL DETAILS SEE DRAWING HW-6
9. FOR BRIDGES SEE STRUCTURAL DRAWINGS S-1.1 TO S-5.11

10. FOR RETAINING WALLS AND FILL SLOPES SEE DRAWINGS W-4.1 TO W-4.3 & W-5.1 TO W-5.6
11. FOR TRAFFIC SIGNAGE DETAILS REFER TO SPECIFICATION: TRAFFIC SIGNAGE 32 17 25
12. FOR PAVEMENT MARKING REFER TO SPECIFICATION: PAVEMENT MARKING 32 17 23
13. FOR REMOVAL OF PAVEMENT MARKINGS REFER TO SPECIFICATION: REMOVAL OF PAVEMENT MARKINGS 32 10 11
14. FOR ASPHALT PAVEMENT REFER TO SPECIFICATION: ASPHALT PAVING 32 12 16
15. FOR PAVEMENT TACK COAT REFER TO SPECIFICATION: ASPHALT TACK COAT 32 12 13.16
16. FOR TRAFFIC BARRIER SPECIFICATIONS REFER TO SPECIFICATION: TRAFFIC BARRIERS 34 17 13
17. THE CONTRACTOR MUST NOT LOCATE ANY EQUIPMENT, LABOUR OR MATERIALS WITHIN THE FIRST NATION RESERVE BOUNDARIES

LEGEND

| | |
|--|-------------------------------------|
| | PROPOSED LIMIT OF CLEARING |
| | PROPOSED SAW CUT |
| | EXISTING EDGE OF ASPHALT |
| | PROPOSED CONCRETE ROAD SIDE BARRIER |
| | PROPOSED RETAINING WALL |
| | EXISTING CONCRETE FENCE |
| | PROPERTY LINE |
| | SIGN |
| | EXISTING UTILITY POLE |
| | EXISTING CULVERT |
| | EXISTING MANHOLE |
| | PROPOSED NEW PAVEMENT |

