



Royal Canadian Mounted Police
Gendarmerie royale du Canada

Doc. no: G.S. 1045-113
Date: 2019-02-15

Specification

Coveralls, Blue

This document has 16 pages including the drawings.

This document was created in English.

The document is available in English and French.

English/Anglais
Français/French

The photograph on this page is for reference only.



RCMP VIEWING SAMPLE

A viewing sample, when available, will be supplied to the successful bidder.

This will be used for the guidance of the manufacturer in all factors not covered by this specification or referred to therein. Variation from the specification may appear in the sample in which case the specification must govern.

It may be obtained from:

Royal Canadian Mounted Police
ATTN: Uniform and Equipment Program
(440 Coventry Road, Warehouse Building)
73 Leikin Drive
Ottawa, Ontario
K1A 0R2

It will be sent “prepaid” and is to be returned “prepaid”.

The viewing sample must be returned to the RCMP in the same condition as received by the manufacturer. Lost or damaged viewing samples must be replaced by an identical item or the RCMP must be reimbursed for the cost of an acceptable replacement.

SPECIFICATION
Coveralls, Blue

1 Definitions

- 1.1 This specification must govern the manufacture and inspection of the Coveralls, Blue. The specific item covered under this specification with stock number is as follows:
- i. 3300 Coveralls, Blue / Combinaison de travail bleue;
 - ii. 3301-100 Coveralls, Blue, Special / Combinaison de travail bleue, taille spéciale.
- 1.2 This specification, drawing, viewing sample, or other information issued in connection therewith, may only be used for specific enquiries, solicitations, or orders placed on behalf of the Royal Canadian Mounted Police.
- 1.3 This specification supersedes all previous specifications for RCMP Coveralls, Blue.
- 1.4 This specification has been translated into French from this original English language document.

2 Applicable Specifications

- 2.1 The following publications are applicable to this specification and to the issues in effect on the date of the solicitation, unless otherwise specified.
- 2.2 **General Services Administration – US Government**
Commercial Item Description
- | | |
|------------|---|
| A-A-50199A | Thread, Polyester Core, Cotton or Polyester-Covered |
|------------|---|
- 2.3 **Royal Canadian Mounted Police Specification (RCMP)**
- | | |
|---------------|---|
| G.S. 1045-266 | Badges Woven Item - Badge, Shoulder, Cloth, Police. |
| G.S. 1045-284 | Cloth, Twill, Poly/Cotton |

3 **General Requirements**

- 3.1 The article or material covered by this specification must be free from material and manufacturing defects that may affect its appearance or serviceability. In all particulars not covered by this specification or contract documents, production must be equivalent in all respects to the viewing sample.
- 3.2 **Design** – The Coveralls, Blue must be seven pocket industrial style designed similar in all respects to the drawing and viewing sample.

4 **Detail Requirements**

4.1 **Components**

- 4.1.1 **Shell Material** – The shell material is RCMP stock item number 9150-000, Cloth, Twill, Poly/Cotton, navy in colour and must be purchased from the RCMP.
- 4.1.2 **Thread** – The thread must be polyester wrap, polyester core, Tex 40, Type II of matching colour to the shell material, meeting U.S. government standard A-A-50199A.
- 4.1.3 **Slide Fastener** – The slide fastener must be a medium duty, brass element, slider and components, with a dark navy blue tape to match the shell material. The fastener is a two way with one top locking slider and one bottom non locking slider mounted back to back with top stops at the top end and curved bridge stop at the bottom end of the fastener. YKK product GMC 56/51 5/8 *TS-TBC* B-B* 3/4" - 1"* is known to meet the requirement.

Size	Slide Fastener Length (inches)
34-36 Small	22"
38-40 Medium	23"
42-44 Large	24"
46-48 X-Large	25"
50-52 XX-Large	26"

- 4.1.4 **Buttons** – The buttons must be four hole, 19 mm, plastic composition buttons of matching shade.

- 4.1.5 **Shoulder Badges** – The RCMP stock item number 2135-108, Badge, Shoulder, Police must be purchased from the RCMP.
- 4.1.6 **Eyelets** – The eyelets must be sized to 5-6 mm diameter hole. The eyelets may be either machine embroidered in matching colour or in brass or aluminum in black.
- 4.2 **Size and Dimensions** – The Coveralls, Blue to this specification must be supplied in the sizes specified by the RCMP and to the dimensions given in the scale of measurements and drawings forming part of this specification.
- 4.3 **Construction**
- 4.3.1. **Stitching** – All stitching must be lockstitch. There must be not less than three or more than four stitches per centimetre. The beginning and ending of all stitching must be securely backstitch tacked, unless secured by other stitching. Component parts of the coverall must be joined by a seam-and-serge (safety stitch) operation. All other seams and stitching must be lockstitch or lock chain stitch. Bar tacks must be 13 mm in length and be made with not less than 22 cover stitches per tack.
- 4.3.2 **Cutting and Assembly** – All components of the coveralls must be cut from the same piece of material and must be cut following the grain line and assembled that in the finished garment the warp must run in the same direction (up and down) with the exception of the collar and waistband.
- 4.3.3. **Body** – The coveralls must be constructed of shell material specified in para. 4.1.1. The front must be fitted with a slide fastener, specified in para. 4.1.3, for closure. The right and left edges of the front closure must be folded back to form a 5 cm hem, creating the placket concealing the slide fastener. The top and bottom of the seam attaching the slide fastener must be bar-tacked to the shell fabric. There must be a suppression strap constructed, dimensioned and positioned on each leg as per drawing 3 and the viewing sample. The upper body and legs must be joined together at the waist with wrong sides together. There must be a separate waistband 4 cm ± 0.5 cm wide centered over waist seam and double topstitched using 1.5 mm and 7 mm gauge. The coveralls must be shaped and dimensioned as per the drawings and the viewing sample.
- 4.3.4. **Sleeves** – The two-piece set in sleeves must be constructed of shell material and include fly cuffs that are equipped with buttonholes and buttons specified in para. 4.1.4. The sleeves must be shaped and dimensioned as per drawing 2 and the viewing sample.

- 4.3.5. **Shoulder Badges** – The RCMP shoulder badges specified in para. 4.1.5 must be centered on the sleeve head 2 cm below the sleeve head seam and attached with one row of stitching in accordance with the viewing sample.
- 4.3.6. **Collar** – The collar must be constructed of shell material specified in para. 4.1.1, cut in two layers. The depth of the collar at the centre back must be 9.5 cm ± 0.5 cm.
- 4.3.7. **Pockets**
- 4.3.7.1. **Chest Pockets** – There must be two chest patch pockets with flaps constructed of shell material with buttonholes and the buttons specified in para. 4.1.4. The left chest pocket must have a pencil compartment as per drawing 4. The pockets must be double topstitched using 1.5 mm and 7 mm gauge. The pocket flaps must be topstitched using 7 mm gauge. The top corners of the pockets and flaps must be bar tacked as per para. 4.3.1. The chest pockets must be positioned evenly on the right and left front panels. The chest pockets and flaps may be shaped slightly differently than the drawings to suit automated manufacturing procedures.
- 4.3.7.2. **Back Hip Pockets** – There must be two hip patch pockets constructed of shell material. The bottom section of the pocket must have a double layer of shell material for reinforcement. The pockets must be double topstitched using 1.5 mm and 7 mm gauge. The top corners of the pockets must be bar tacked as per para. 4.3.1. The back hip pockets may be shaped slightly differently than the drawings to suit automated manufacturing procedures.
- 4.3.7.3. **Back Hammer Pocket** – There must be one hammer pocket on the back right leg below the back hip pocket. It must be dimensioned and stitched as per drawing 4 and the viewing sample.
- 4.3.7.4. **Side Pockets** – There must be two side pockets with pass-through openings 18 cm ± 0.5 cm in length.
- 4.3.8. **Eyelets** – There must be four eyelets as specified in para. 4.1.6, two on each side of the seam, for ventilation, under each armhole, dimensioned and positioned in accordance with drawing 3 and the viewing sample.

4.3.9. **Identification Label** – Each coverall must have a durable blank label 7.5 cm x 2 cm applied separately below the marking and cleaning label used for the inscription of the wearers' name.

4.3.10. **Marking & Cleaning Instructions Label** – Each coverall must have a durable label attached to the inside collar seam at centre of the neck as shown in drawing 3. The text must be permanent inks of a contrasting colour and must withstand the life of the garment with no apparent change in appearance. All text except for the RCMP stock number must be in size 6 font. The RCMP stock number must appear in size 8 font. The manufacturer's identification must not appear anywhere on the garment except where indicated on the label. The label must contain the following information in English and French:

1. Item name in English as written in Para. 1.1.
2. Item name in French as written in Para. 1.1.
3. RCMP stock number - reference contract documents. (Ex. 3300 000)
4. Size and height group of the article, combining the size designation referenced in the English and French contract documents. (Ex. 42-44 Large/ 42-44 Grand)
5. Date of manufacture, in numeric format year/month (Ex. 2001/11)
6. Your manufacturer identification (Company name or number).
7. Print information as shown below.

1		
2		
3		
4		
5		
6		
7		
	Do Not use fabric softener or chlorine bleach	Ne pas utiliser d'agent adoucissant ni d'agent de blanchiment
	Tumble dry- low (Do Not use dryer sheets)	Sécher par culbutage – à basse température (Ne pas utiliser d'assouplissant en feuilles)
	Steam iron - medium	Repassage à vapeur - à température moyenne
	DO NOT DRY CLEAN.	NE PAS NETTOYER À SEC.

5 **Quality Assurance Provisions**

- 5.1 **Responsibility for Inspection** – Unless otherwise stipulated in the contract, it is the prime contractor's responsibility to satisfy the RCMP, Uniform and Equipment Program that the material and services being supplied conform to this specification. This may be accomplished by performing the tests specified in this specification or by demonstrating to the satisfaction of the RCMP, Uniform and Equipment Program that conformity to this specification of manufacturing processes is assured. The contractor must use a commercial testing establishment acceptable to the RCMP, Uniform and Equipment Program.
- 5.2 The RCMP, Uniform and Equipment Program reserves the right to perform any inspection considered necessary to ensure the material and services conform to the specified requirements. For the purpose of inspection, a portion of each delivery not exceeding two percent or two out of any number delivered under 100 may be put to tests that could destroy the articles. If found to be inferior or not in accordance with this specification, all articles so destroyed must be replaced by others of proper quality and pattern at the expense of the contractor. The entire delivery may also be rejected if it is found that articles previously rejected due to non-repairable defects are redelivered for inspection.
- 5.3 The contractor will be promptly notified when any articles are not accepted and such articles will be returned at the contractor's risk and expense.

6. **Scale of Measurement Definitions and Location References**

(Refer to the Scale of Measurements and Drawing No. 1).

- 6.1 **Chest Circumference (total circumference)** – When placed flat, the chest circumference must be the distance across the coverall, measured at the lowest point of the armholes. The result must be doubled to measure total circumference. (A).
- 6.2 **Waist Circumference (total circumference)** – When placed flat, the waist circumference must be the distance across the coverall, measured at the centre of the waistband. The result must be doubled to measure total circumference. (B).
- 6.3 **Seat Circumference (total circumference)** – When placed flat, the seat circumference must be the distance across the coverall, measured at the bottom of the front slide fastener. The result must be doubled to measure total circumference. (C).
- 6.4 **Back Width** – When placed flat, the back width must be the distance across the back from armhole to armhole, in line with the back sleeve seam. (D).
- 6.5 **Trunk Circumference** – The trunk must be measured from the shoulder point at the collar seam, down and around to the centre back neckline. (E).
- 6.6 **Armhole Circumference** – The armhole circumference must be the distance around the armhole, measured along the curvature of the seam. (F).
- 6.7 **Sleeve Length Overarm** – The overarm sleeve length must be the distance from the armhole at the shoulder to the bottom edge of the sleeve cuff. (G).
- 6.8 **Sleeve Length Underarm** – The underarm sleeve length must be the distance under sleeve from the armhole to the bottom edge of the sleeve cuff. (H).
- 6.9 **Elbow Circumference** – The elbow must be measured across the width of the sleeve at the distance half way between the underarm seam and the bottom edge of the sleeve cuff. The result must be doubled to measure total circumference. (J).
- 6.10 **Cuff Circumference** – The sleeve cuff must be measured at the bottom edge of the sleeve cuff without buttons attached. The result must be doubled to measure total circumference. (K)

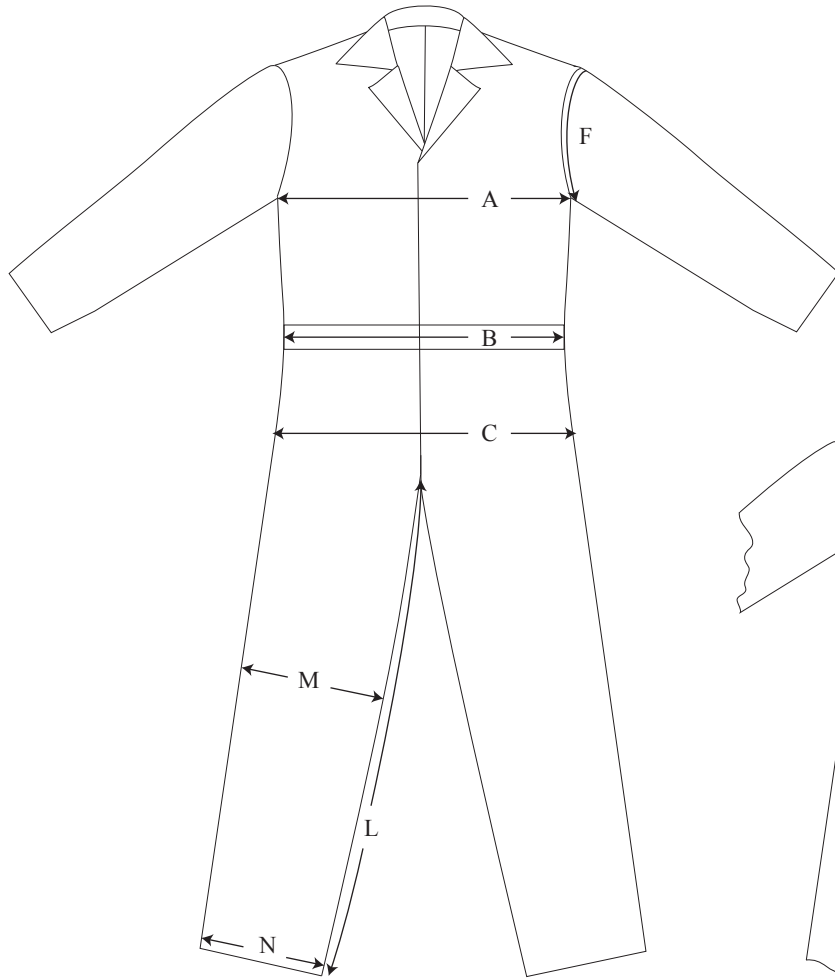
- 6.11 **Inseam Length** – The inseam length must be the distance measured from the crotch to the hem following along the inseam. (L).
- 6.12 **Knee Circumference** – The knee must be measured across the width of the leg at the distance half way between the crotch seam and the bottom hem. The result must be doubled to measure total circumference. (M).
- 6.13 **Bottom Circumference** – When placed flat, the bottom must be measured across the width at the bottom of leg. The result must be doubled to measure total circumference. (N).

Scale of Measurements – Coveralls, Blue														
SIZE DESIGNATION		GARMENT MEASUREMENTS												
Height	Size (Chest in Inches)	Chest Circum- ference	Waist Circum- ference	Seat Circum- ference	Back Width	Trunk Circum- ference	Armhole Circum- ference	Sleeve Length Overarm	Sleeve Length Underarm	Elbow Circum- ference	Cuff Circum- ference	Inseam	Knee Circum- ference	Bottom Circum- ference
163-170 cm	Small (34-36)	110	94	117	48	184	56	58	47	42	29	69	60	50
170-178 cm	Medium (38-40)	120	104	127	50	189	58	61	50	44	31	73	62	52
180-185 cm	Large (42-44)	130	114	137	52	194	60	64	53	46	33	77	64	54
188-196 cm	X-Large (46-48)	140	124	147	54	199	62	67	56	48	35	81	66	56
188-196 cm	XX-Large (50-52)	150	134	157	56	204	64	70	59	50	37	85	68	58
TOLERANCES ±		1.5	1.5	1.5	1	2	2	1.5	1.5	1.5	1	1.5	1.5	1.5
MEASUREMENT LOCATION		A	B	C	D	E	F	G	H	J	K	L	M	N
All measurements are in centimeters unless otherwise indicated														

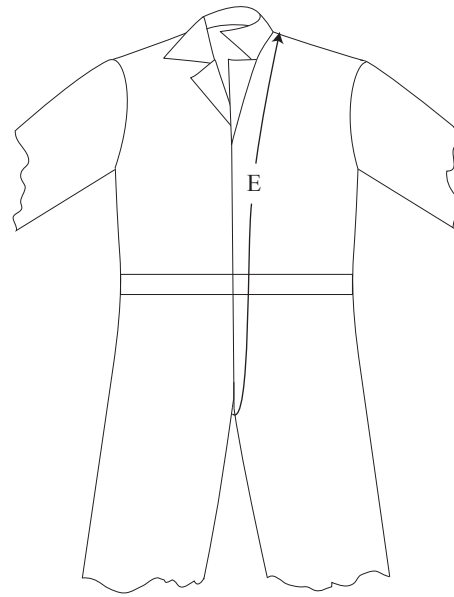
Drawing 1

G.S. 1045-113

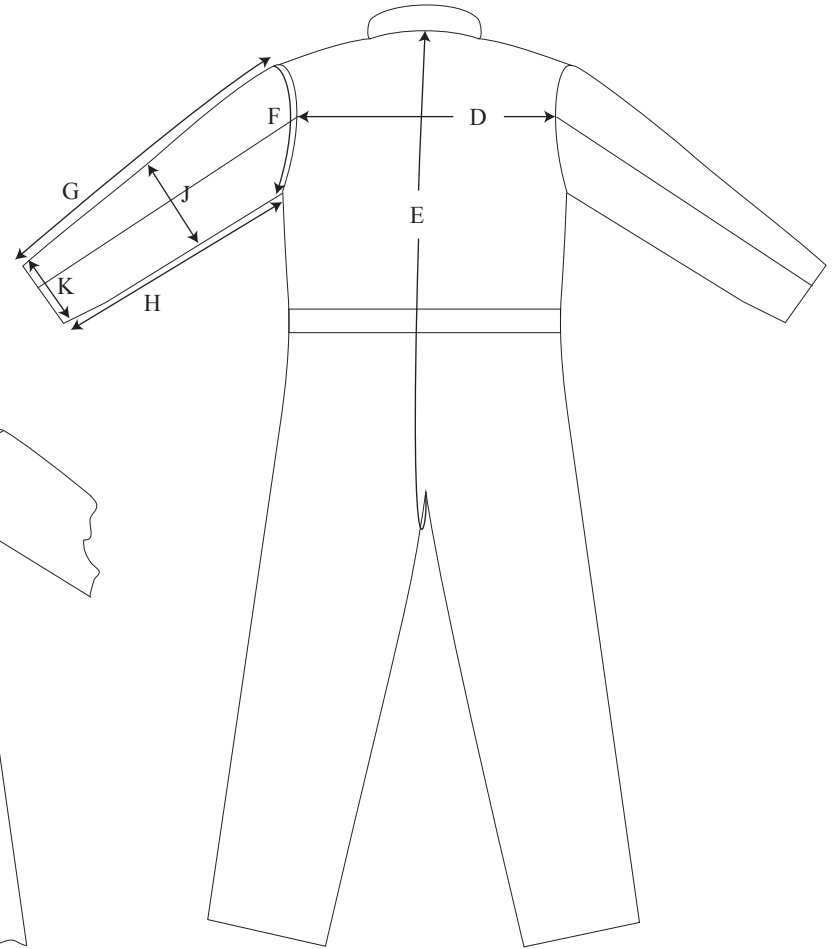
Coveralls, Blue



Front View



Front View



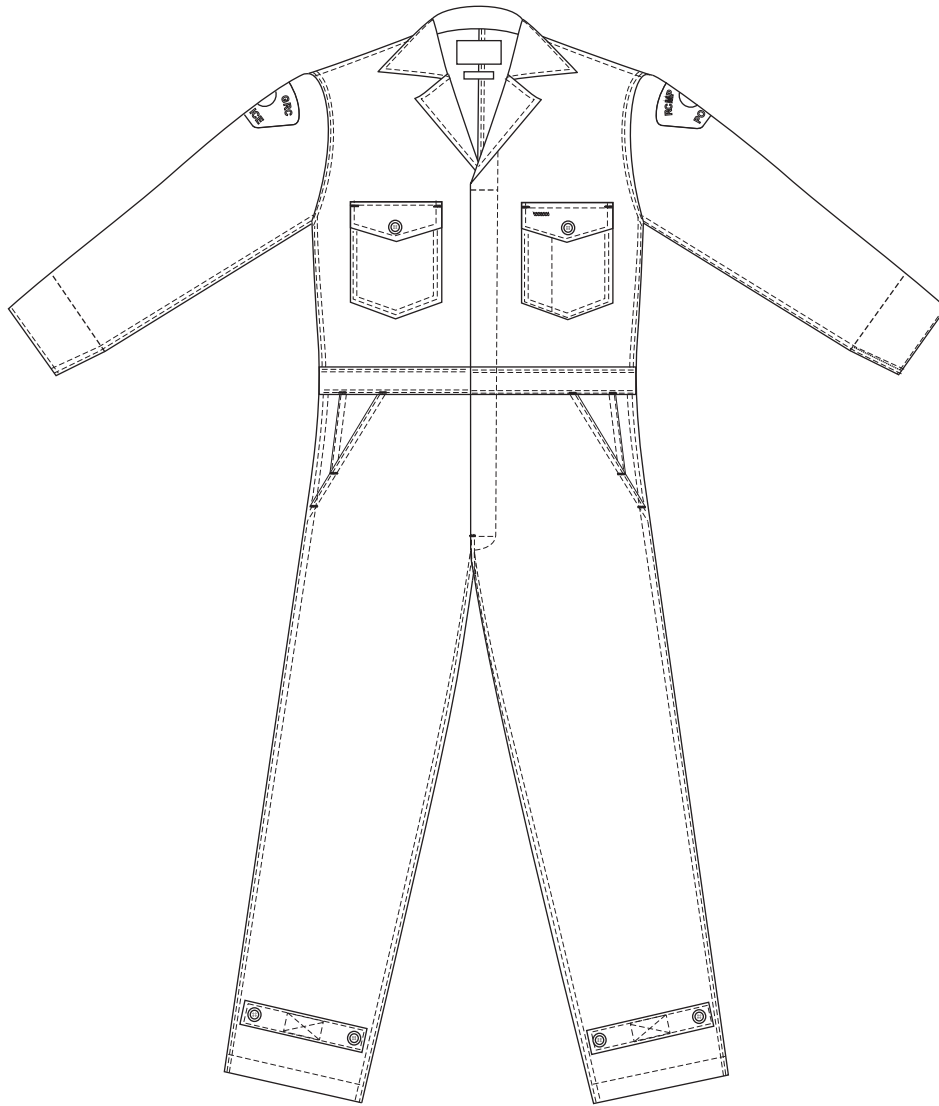
Back View

NOT TO SCALE
All measurements are shown in centimeters.

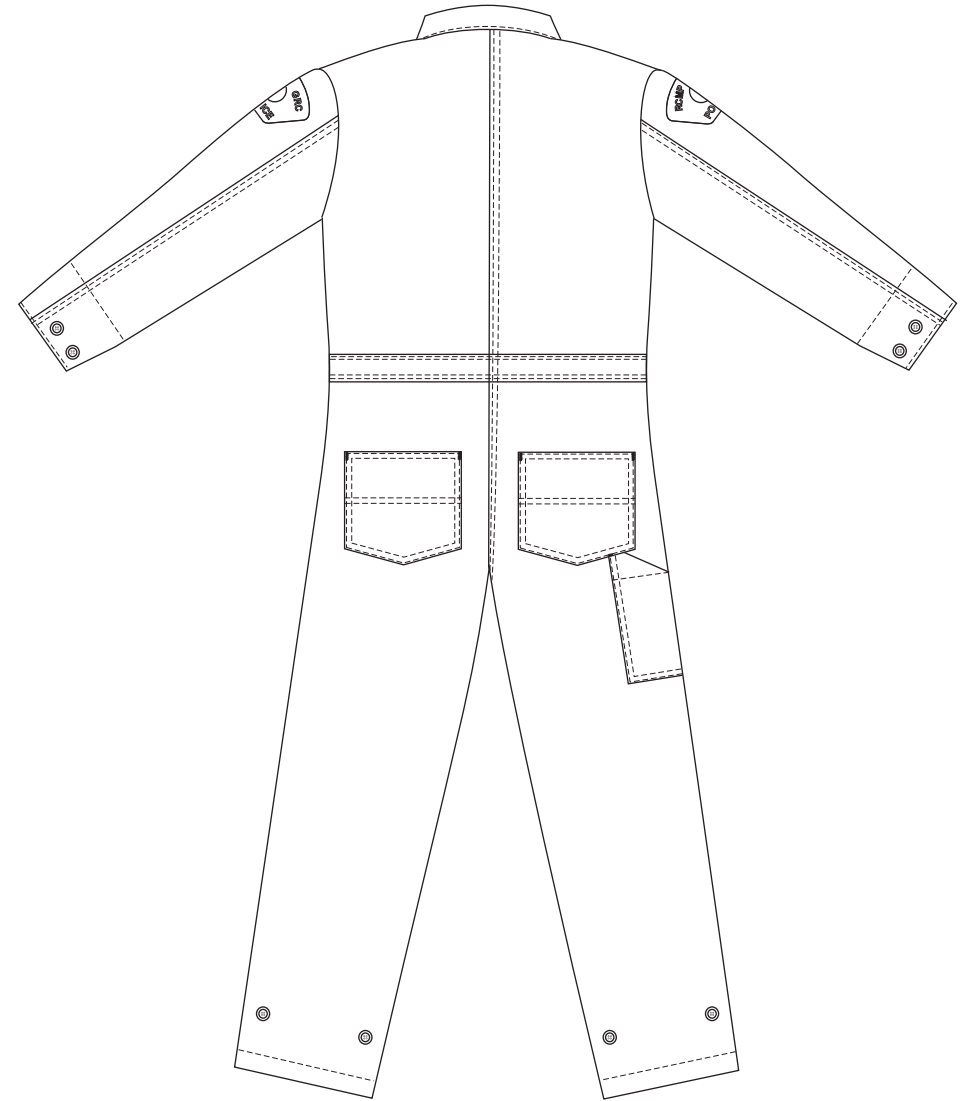
Drawing 2

G.S. 1045-113

Coveralls, Blue



Front View



Back View

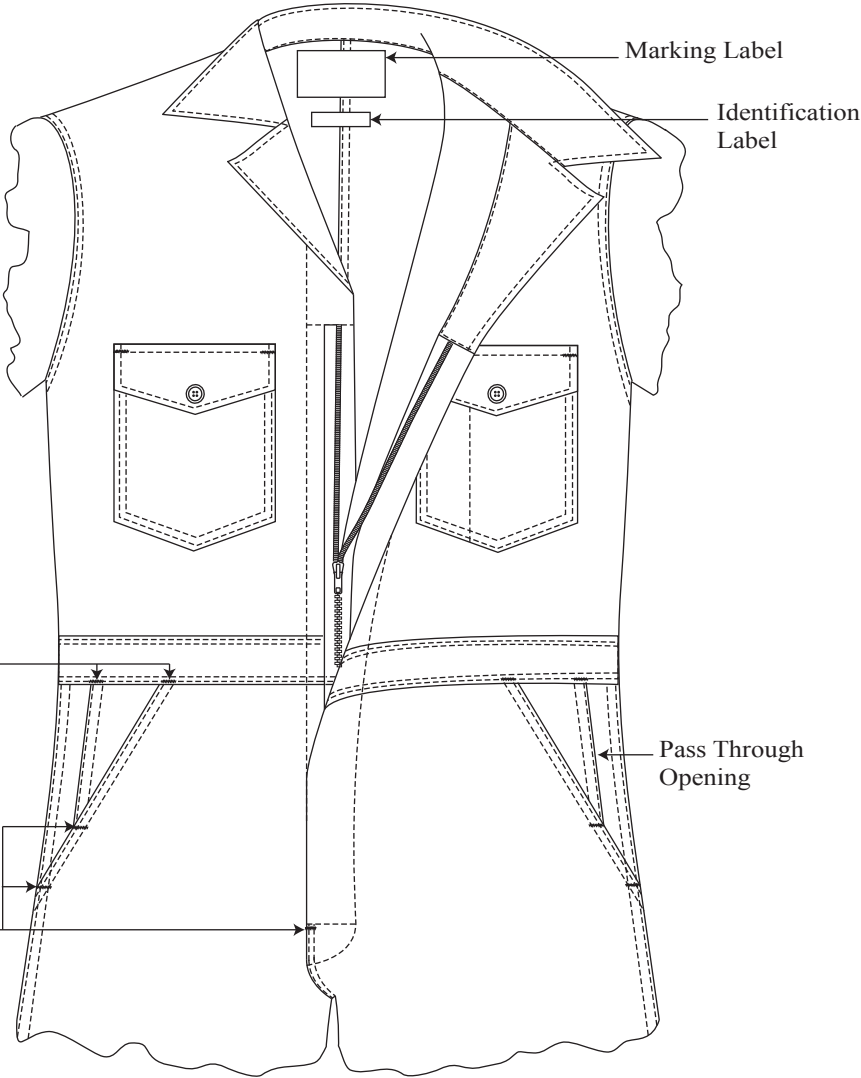
NOT TO SCALE

All measurements are shown in centimeters.

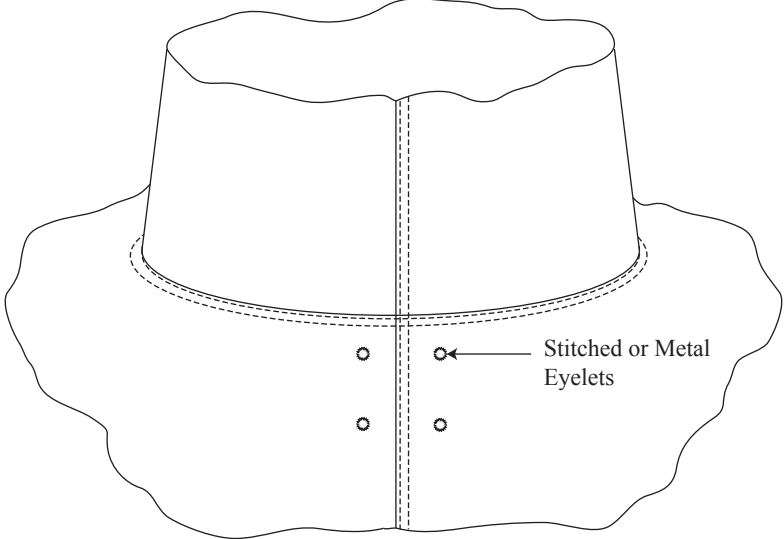
± 0.5 cm tolerance acceptable unless otherwise indicated.

Drawing 3

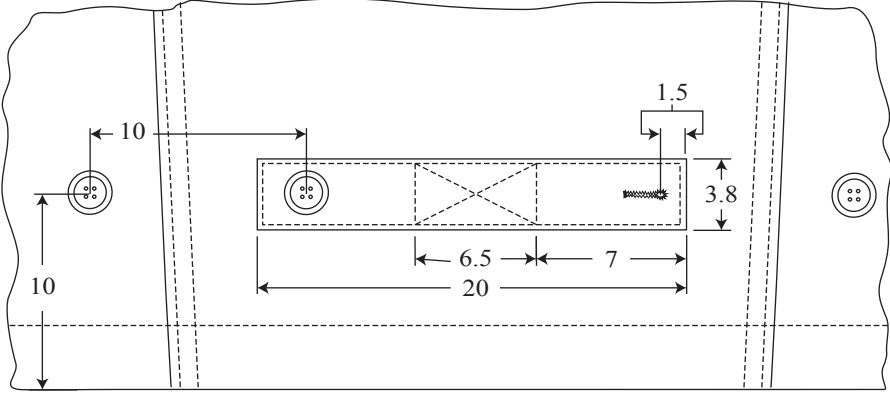
Coveralls, Blue



Slide Fastener Detail (Front View)



Underarm Detail



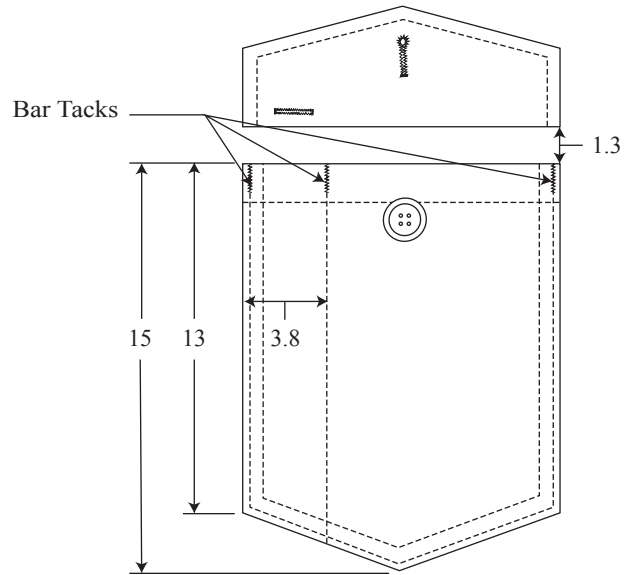
Suppression Strap Detail

NOT TO SCALE
All measurements are shown in centimeters.
± 0.5 cm tolerance acceptable unless otherwise indicated.

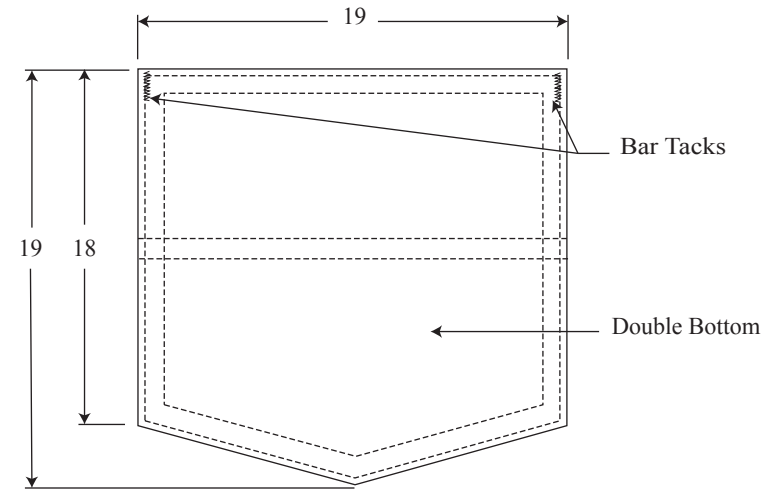
Drawing 4

G.S. 1045-113

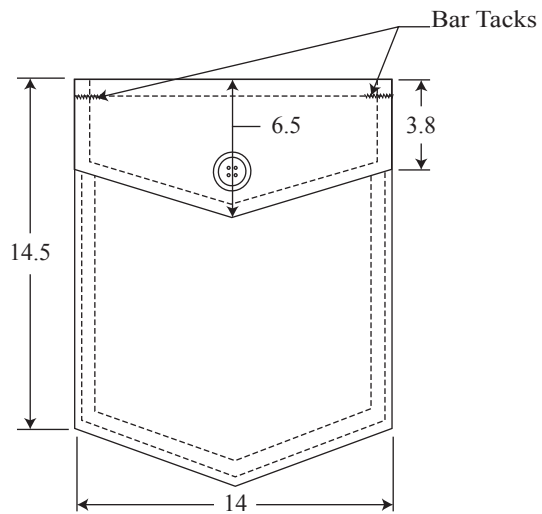
Coveralls, Blue



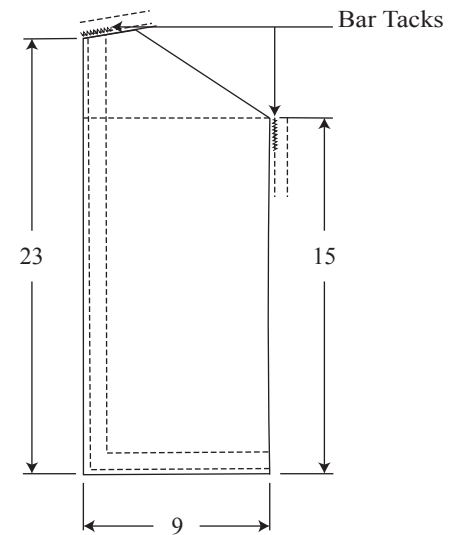
Left Pocket



Back Pocket



Right Pocket



Hammer Pocket

NOT TO SCALE

All measurements are shown in centimeters.

± 1 cm tolerance acceptable unless otherwise indicated.