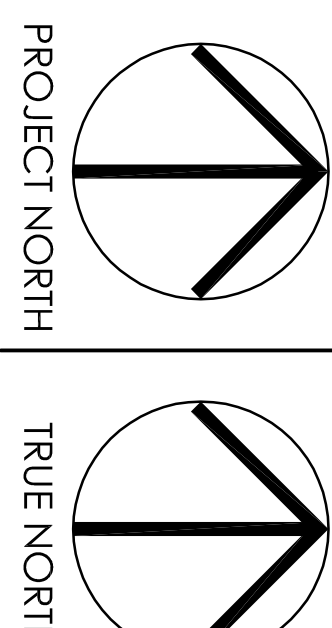


GENERAL NOTES
The drawings and all its components are protected by copyright, and
without the written consent of Casola Koppe Architects Ltd. These drawings are
not to be reproduced, stored in a retrieval system, or transmitted in any form or
by any means, electronic, mechanical, photocopying, recording, or by any
information storage and retrieval system, without the prior written consent of
Casola Koppe Architects Ltd. Any reproduction or use of these drawings
without the prior written consent of Casola Koppe Architects Ltd. is
prohibited. The drawings are the property of Casola Koppe Architects Ltd.
and shall remain their property. The drawings are to be used for the project
only. The drawings are not to be used for any other project without the
prior written consent of Casola Koppe Architects Ltd.

ARCHITECT

casola koppe
ARCHITECTS
#300 - 1410 1st Street SW, Calgary, Alberta T2P 0V6
Tel: (403) 267-9940 Fax: (403) 267-9942 info@ckarch.co

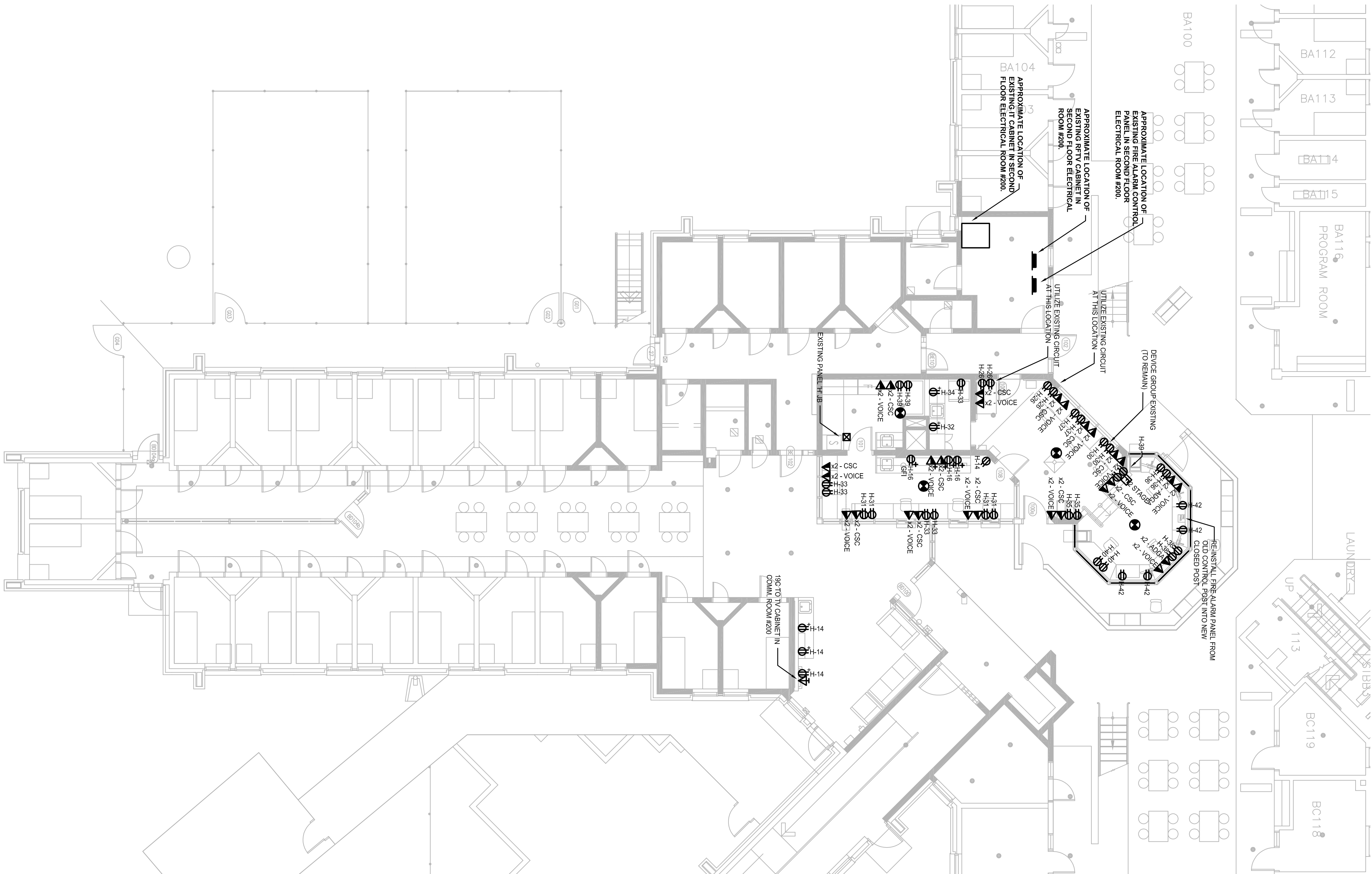
| Revision Schedule | |
|-------------------|------------------------|
| Revision | Revised Description |
| 0 | ISSUED FOR PERMIT |
| 1 | ISSUED FOR APPROVAL #1 |
| 2 | |
| 3 | |
| 4 | |
| 5 | |
| 6 | |
| 7 | |
| 8 | |
| 9 | |



| | |
|------------------------|---|
| PROJECT | BOW UNIT REDEVELOPMENT |
| DRAWING | ELECTRICAL POWER & SYSTEMS DEMO & NEW CONSTRUCTION |
| REVISION | TM |
| DRAWN | TM |
| REVIEWED | |
| DATE | |
| APPROVED | |
| DATE | |
| PROJECT PROJECT NUMBER | R082215.001 1706 |
| DRAWING NUMBER | E-2 |

ELECTRICAL DEMOLITION AND SALVAGE

1. UNLESS OTHERWISE NOTED, ALL EXISTING ELECTRICAL SYSTEMS WHICH BECOME REDUNDANT SHALL BE REMOVED BY THE CONTRACTOR.
2. REMOVE ALL REDUNDANT EXISTING CONDUIT WHERE ACCESSIBLE.
3. REMOVE ALL REDUNDANT EXISTING CONDUITS TO POINT OF SOURCE.
4. CUT AND DISCONNECT ALL WIRING STATIONS TO ACCOMMODATE NEW EQUIPMENT OR CONDUIT. LEAVE CUT AND DISCONNECTED WIRING STATIONS IN PLACE.
5. REMOVE ALL SALVAGE MATERIAL OPEN TO BUILDING OWNER.
6. CONTRACTOR SHALL VERIFY THE RANGE OF DEMOLITION EXTENT OF DEMOLITION REQUIRED. NO EXTRA WORK SHALL BE REQUIRED TO DEMOLITION CONTRACTOR'S OWN WASTE AND DEBRIS FROM THE PROJECT SITE.
7. CONTRACTOR SHALL VERIFY AND CONFIRM PANEL SCHEDULES AND LOADS FOR ALL PANELS AFFECTED BY THIS DEMOLITION.
8. MAINTAIN CONTINUITY OF EXISTING SERVICE CIRCUITS AS REQUIRED TO PROVIDE POWER TO REMAINING EQUIPMENT, DEVICES AND LUMINAIRES THAT ARE NOT BEING REMOVED.
9. ANY EXISTING CONDITIONS INDICATED ARE BASED UPON INFORMATION PROVIDED BY OTHERS. THE CONTRACTOR SHALL ADJUST FOR ACTUAL FIELD CONDITIONS AT NO ADDITIONAL EXPENSE TO THE OWNER.



2 MAIN FLOOR POWER & SYSTEMS PLAN – NEW CONSTRUCTION

1 MAIN FLOOR POWER & SYSTEMS PLAN – DEMO

