



Cubicle Safety Shower STD-SD-32K

CUBICLE SAFETY SHOWER

- Designed in accordance with ANSI and EU guidelines
- Unheated Self-Contained Cubicle Emergency Showers
- Hughes ball valve for greater reliability and longer life
- Optional covered Eye/Facewash bowl to provide protection against airborne contaminants.
- Pulling down the lid provides simple operation even when vision is impaired
- Ideal in situations where a shower needs to be totally enclosed
- Choice of optional components including alarms and foot operation

Cubicle Safety Shower

Unheated Emergency Cubicle Shower with single overhead spray and integral drain sump.

These cubicle models are ideal in situations where a shower needs to be totally enclosed, particularly if space is at a premium or where a shower requires its own designated area due to clutter. Also very popular where it is imperative that there is minimal overspray of water outside the shower area.

Specification

The Cubicle Shower has a stainless steel hollow section frame enclosed in GRP sheeting. The sheeting is fitted with pictogram signs to International Standard ISO 3864-1 and green and white safety stripes.

The shower has stainless steel pipework and is lever operated for ease of use in an emergency.



It has a removable self-draining ABS shower rose, which is specifically designed for minimal overspray and high flow rates in line with ANSI standards.

Hughes Ball Valve

- Designed using the latest 3D modelling software
- Specifically developed for Hughes Emergency Shower and Eye wash equipment
- Stainless steel construction to cope with the harshest atmospheres
- Low operating torque designed for ease of operation
- Tested and witnessed by independent test house specialist
- Designed for rough service



HUGHES



HUGHES-SAFETY-SHOWERS.COM



THE QUEEN'S AWARDS
FOR ENTERPRISE
INTERNATIONAL TRADE
2012





Cubicle Safety Shower STD-SD-32K

Cubicle Safety Shower

MATERIALS OF CONSTRUCTION

PIPEWORK & FITTINGS (K)	Stainless Steel
OPERATING VALVES	Hughes - 316 Stainless Steel
SHOWER SPRAY OUTLET	ABS Shower Rose
STANDARD FINISH	Fiberglass (GRP) and Stainless Steel

SERVICES

WATER INLET	1" Male NPT
DESIGN OPERATING PRESSURE	29 PSI to 85 PSI (Higher supply pressures accommodated with the incorporation of the optional Pressure Reducing Valve)
TEST PRESSURE	150 PSI
MINIMUM FLOW RATES - ANSI	Shower: 76 liters/minute (20 gallons/minute) Shower/Body Spray: 115 liters/minute (30 gallons/minute) Eye/Facewash (45G type optional): 11.4 liters/minute (3 gallons/minute)

ENVIRONMENTAL OPERATING TEMPERATURE

MINIMUM AMBIENT OPERATING TEMP	5° C (41° F) - (0° C (32° F) if valve is insulated)
MAXIMUM AMBIENT OPERATING TEMP	35° C (95° F)

ACTIVATION/OPERATION

SHOWER/BODY SPRAY	Hand Lever (Foot Panel control for hands-free operation - optional)
-------------------	---------------------------------------------------------------------

WEIGHTS and DIMENSIONS

DIMENSIONS	35"(W) x 38"(D) x 94"(H)
WEIGHT (UNPACKED)	330lb

Standards



- ALLOCATE A LOCATION REFERENCE FOR EASE OF IDENTIFICATION
- ALL UNITS TO BE ACTIVATED WEEKLY - ANSI Z358.1 2014
- SAFETY SHOWER/EYE WASH MUST BE LOCATED WITHIN 10 SECONDS OR 15 METERS OF A POTENTIAL HAZARD - ANSI Z358.1 2014
- THE UNIT MUST BE LOCATED ON THE SAME LEVEL AS THE HAZARD AND THE PATH OF TRAVEL & LOCAL AREA SHOULD BE FREE FROM OBSTRUCTIONS - ANSI Z358.1 2014
- THE UNIT SHOULD BE WELL LIT AND IDENTIFIED WITH HIGHLY VISIBLE SIGNAGE TO BS EN ISO 7010 - ANSI Z358.1 2014
- FLUSH FOR SUFFICIENT DURATION TO PURGE THE SUPPLY PIPE WITH FRESH WATER
- REPLACE WORN OR ILLEGIBLE SAFETY SIGNS AND STICKERS
- SIGN & DATE SERVICE TAG WHEN SERVICE COMPLETED



TECHNICAL DETAILS

HUGHES



HUGHES-SAFETY-SHOWERS.COM



THE QUEEN'S AWARDS
FOR ENTERPRISE
INTERNATIONAL TRADE
2012





Cubicle Safety Shower STD-SD-32K

OPTIONS

Options



Eye/Facewash STD-45G



Cubicle Light



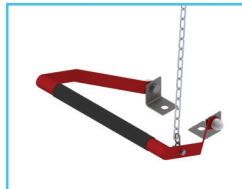
Stainless Steel Shower Rose



Optiflex



Panel Foot Control



Treadle Foot Control



Body Spray



Strip Screens



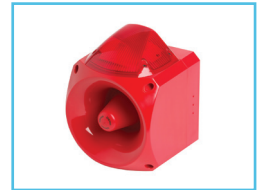
Shower Proximity Switch



Eye/Facewash Proximity Switch



Flow Switch



Audible/Visual Alarm



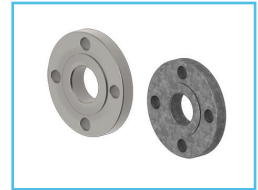
Audible Alarm



Visual Alarm



Pressure Reducing Valve



Inlet Flange



- Optional Fittings
- Eye/Facewash STD-45G
- Cubicle Light
- Stainless Steel Shower Rose
- Optiflex
- Panel Foot Control
- Treadle Foot Control
- Body Spray
- Strip Screens
- Shower Proximity Switch
- Eye/Facewash Proximity Switch
- Flow Switch
- Audible/Visual Alarm
- Audible Alarm
- Visual Alarm
- Brass Pressure Reducing Valve
- Inlet Flange

STD-SD-32K

HUGHES



HUGHES-SAFETY-SHOWERS.COM



THE QUEEN'S AWARDS
FOR ENTERPRISE
INTERNATIONAL TRADE
2012

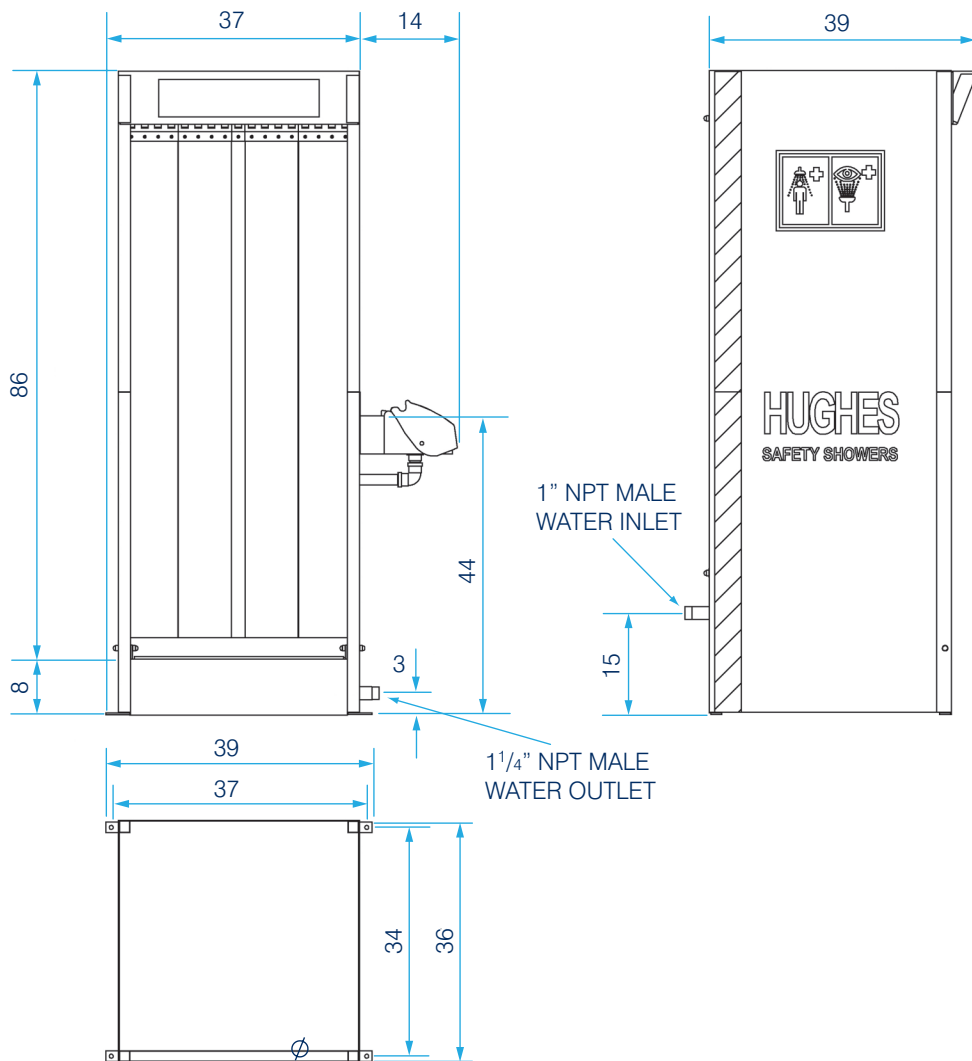


PRODUCT INFORMATION SHEET



Cubicle Decontamination Shower
STD-SD-32K

G.A. DRAWING



HUGHES NORTH AMERICA INC
457 Campbell Street, Sarnia, Ontario N7T 2J1 Canada.

T: +1 (866) 312 1652

E: info@hughes-safety.com F: +1 (866) 795 0368

www.hughes-safety-showers.com

