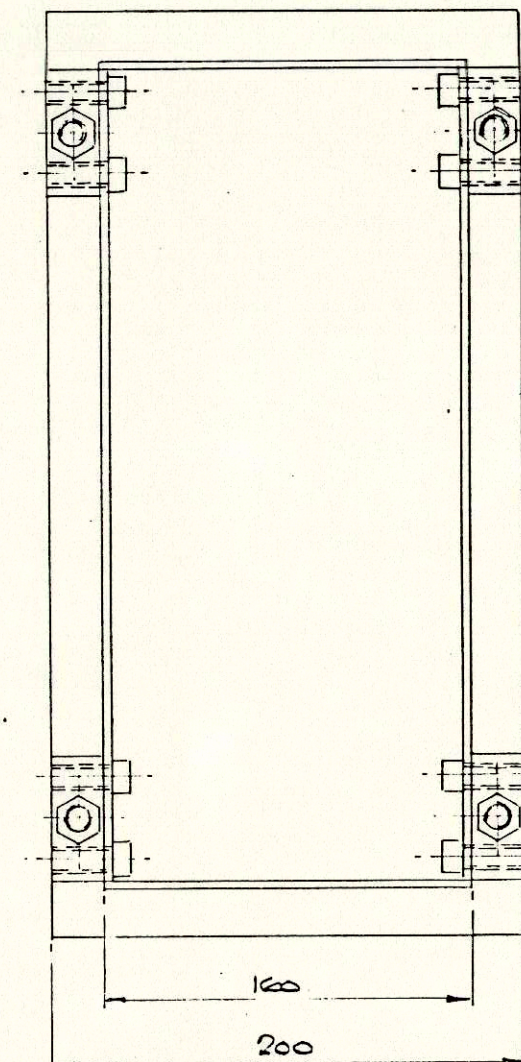
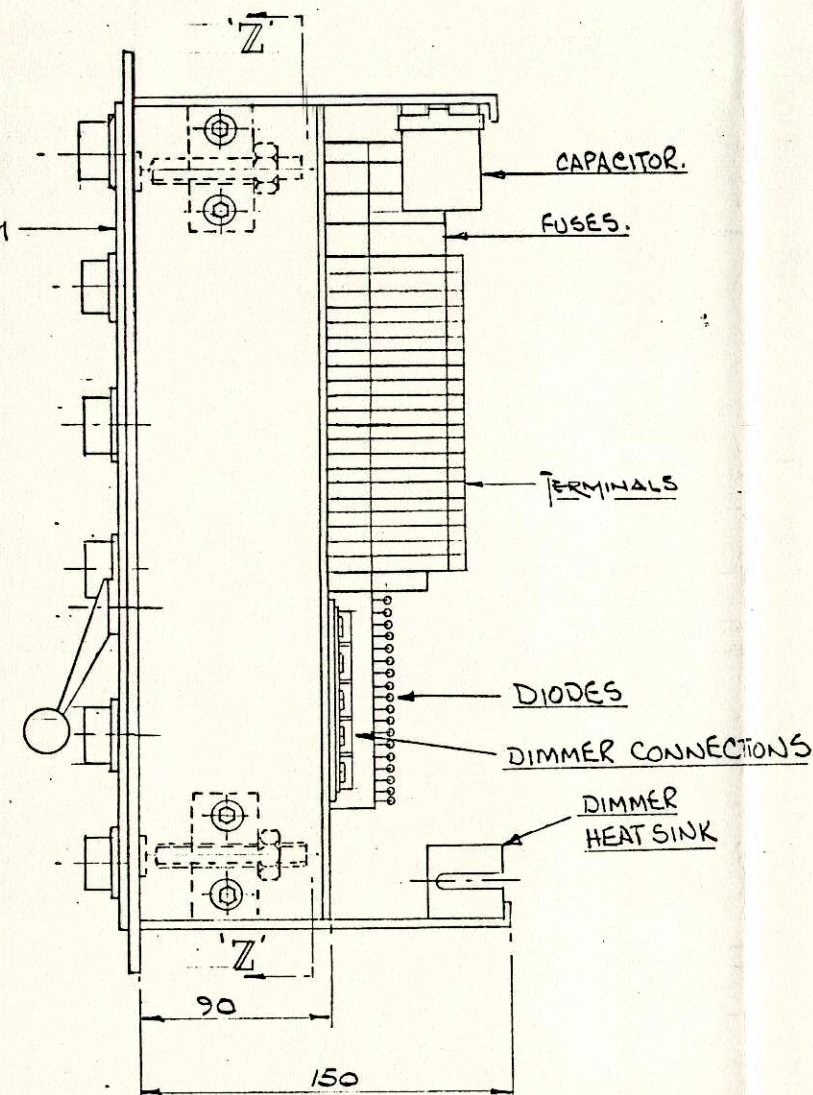


MIMIC DIAGRAM



| REVISIONS |
|--|
| 1 ORIGINAL ISSUE |
| ISSUE 2: MOD. P. SUT. CUSTOMER REQ. (MIMIC LAYOUT) 29.4.85 |
| ISSUE 3: MOD. BOW THRUST ON/OFF PUSH BUTTONS ADDED 21.29.4.85 |
| ISSUE 4: MOD. TO BE 'AS FITTED'. CLR 12-2-86. |



| | | | | | |
|---|--|---|-------------|---|--|
| CUSTOMER REFERENCE <u>BURRARD-YARROW CORPN.</u> <u>1200-NAVAIDS.</u> | | YCC REFERENCE <u>5128YCC/-</u> <u>-/C85-04-0256</u> | | THIS DRAWING IS THE PROPERTY OF YCC INC AND IS CONFIDENTIAL AND IS NOT TO BE COPIED OR DISCLOSED TO THIRD PARTIES WITHOUT THE CONSEN OF THE PROPRIETORS. | |
| DRAWING TITLE: <u>GEN. ARRGT. OF MIMIC DIAGRAM &</u> <u>DROP IN PANEL ASSEMBLY.</u> | | | | | |
| SCALE: <u>N.T.S.</u> | | | | | |
| YOUNG & CUNNINGHAM CANADA INC. ST. CATHRINES, ONTARIO. | | | BY | DATE | DRAWING No. <u>V15215/4 /A2</u> |
| | | DRAWN | <u>D.S.</u> | | |
| | | TRACED | | | |
| | | CHECKED | | | |