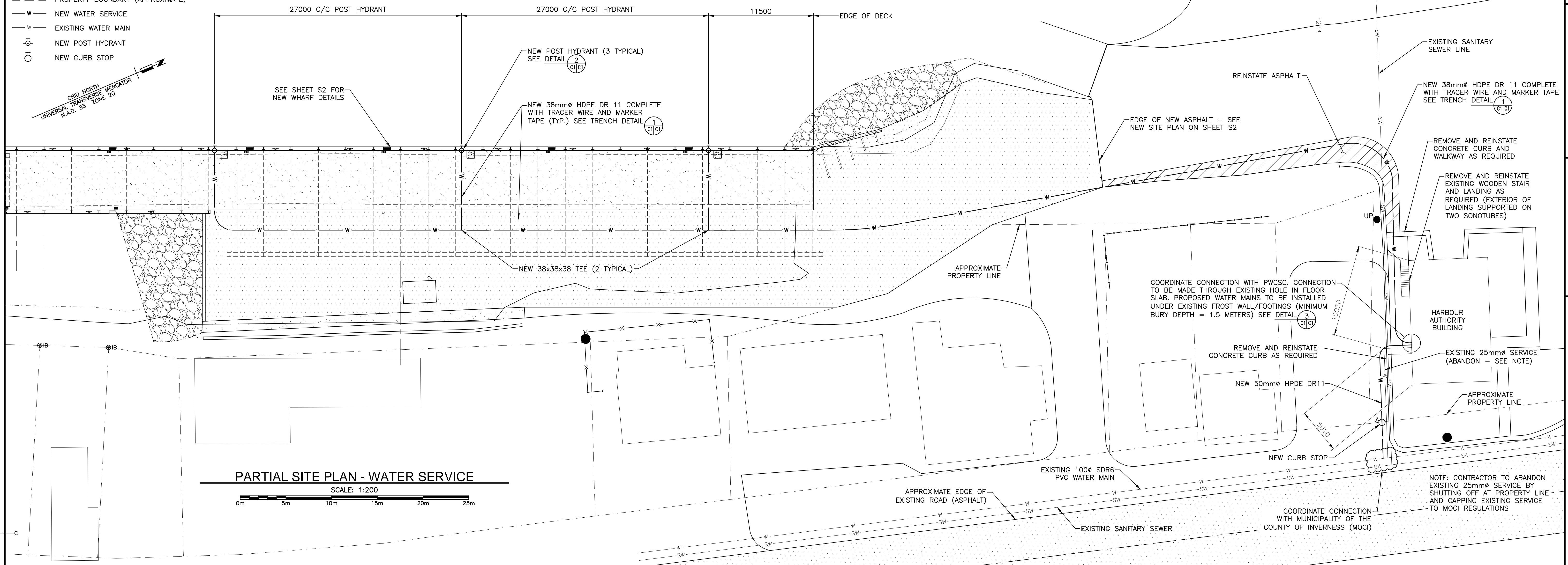
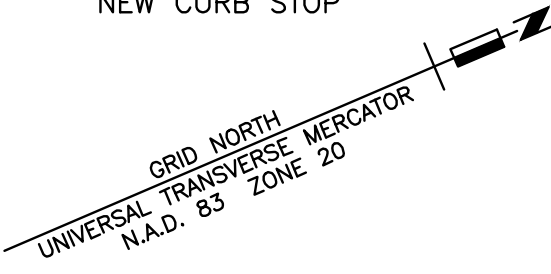


LEGEND

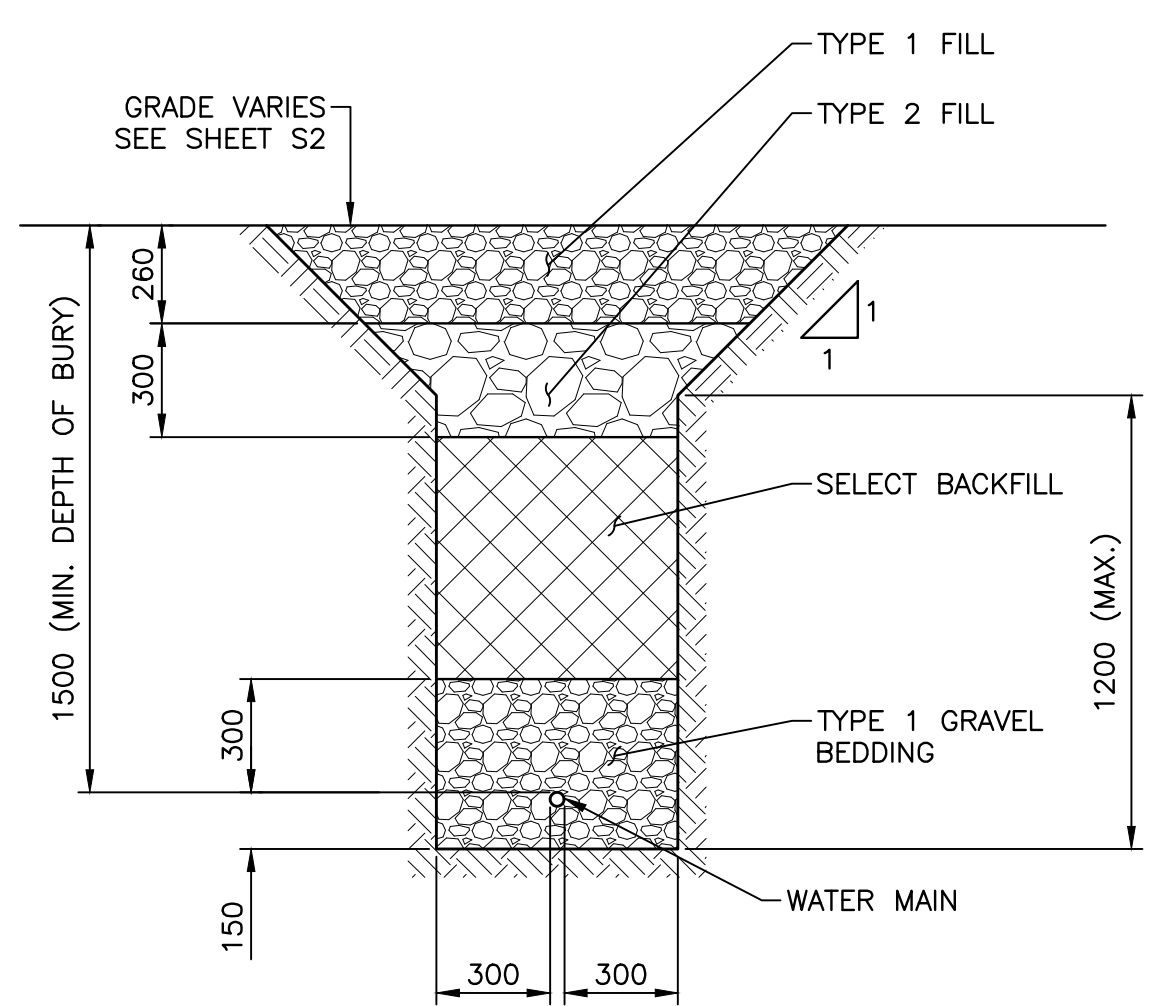
- +3.20 FINISH ELEVATION (METERS ABOVE CHART DATUM)
- IB ROUND IRON BAR
- NEW ASPHALT
- PROPERTY BOUNDARY (APPROXIMATE)
- W NEW WATER SERVICE
- W EXISTING WATER MAIN
- PH NEW POST HYDRANT
- CS NEW CURB STOP



PARTIAL SITE PLAN - WATER SERVICE

SCALE: 1:200

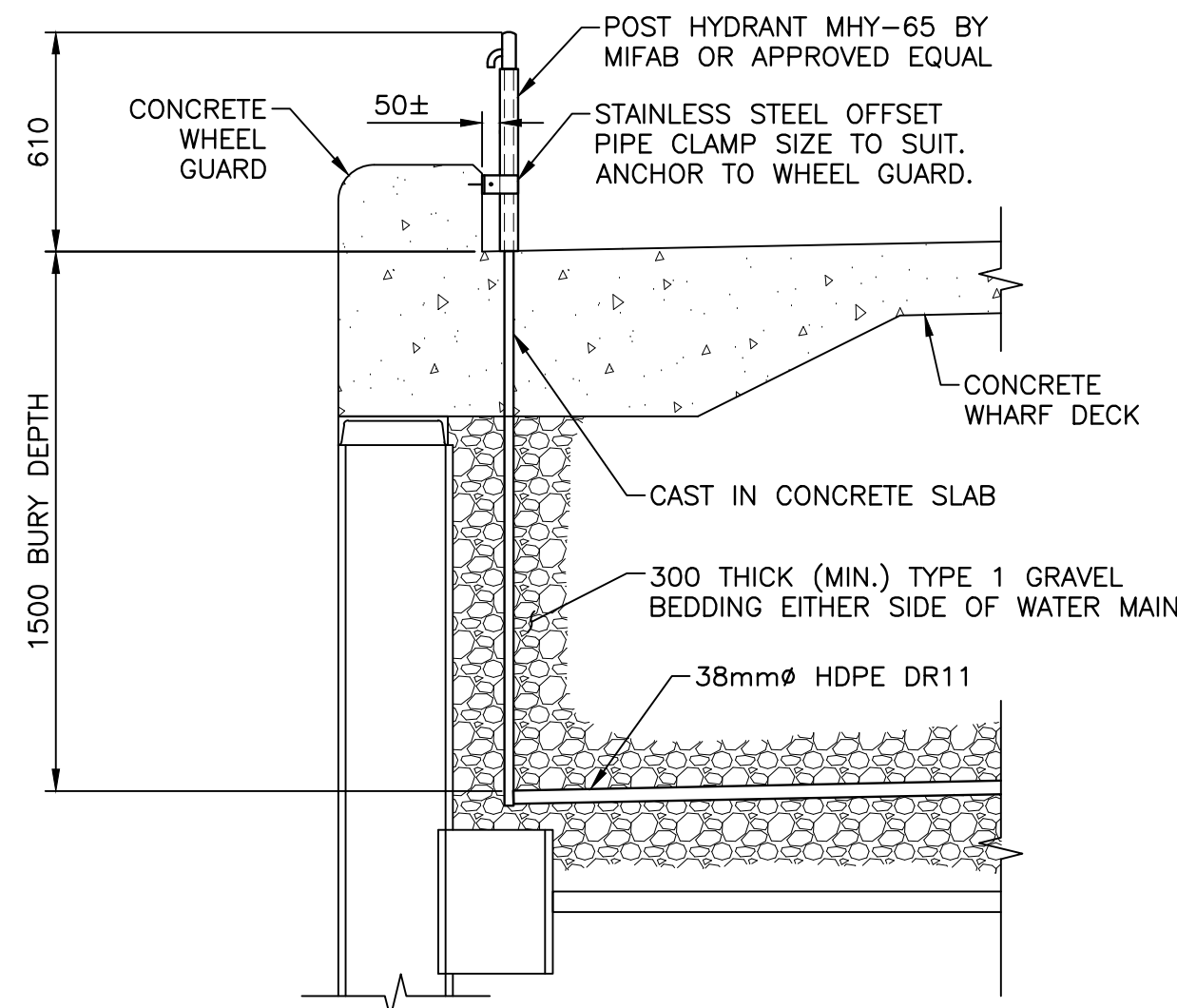
0m 5m 10m 15m 20m 25m



TRENCH DETAIL - WATER SERVICE

SCALE: 1:20

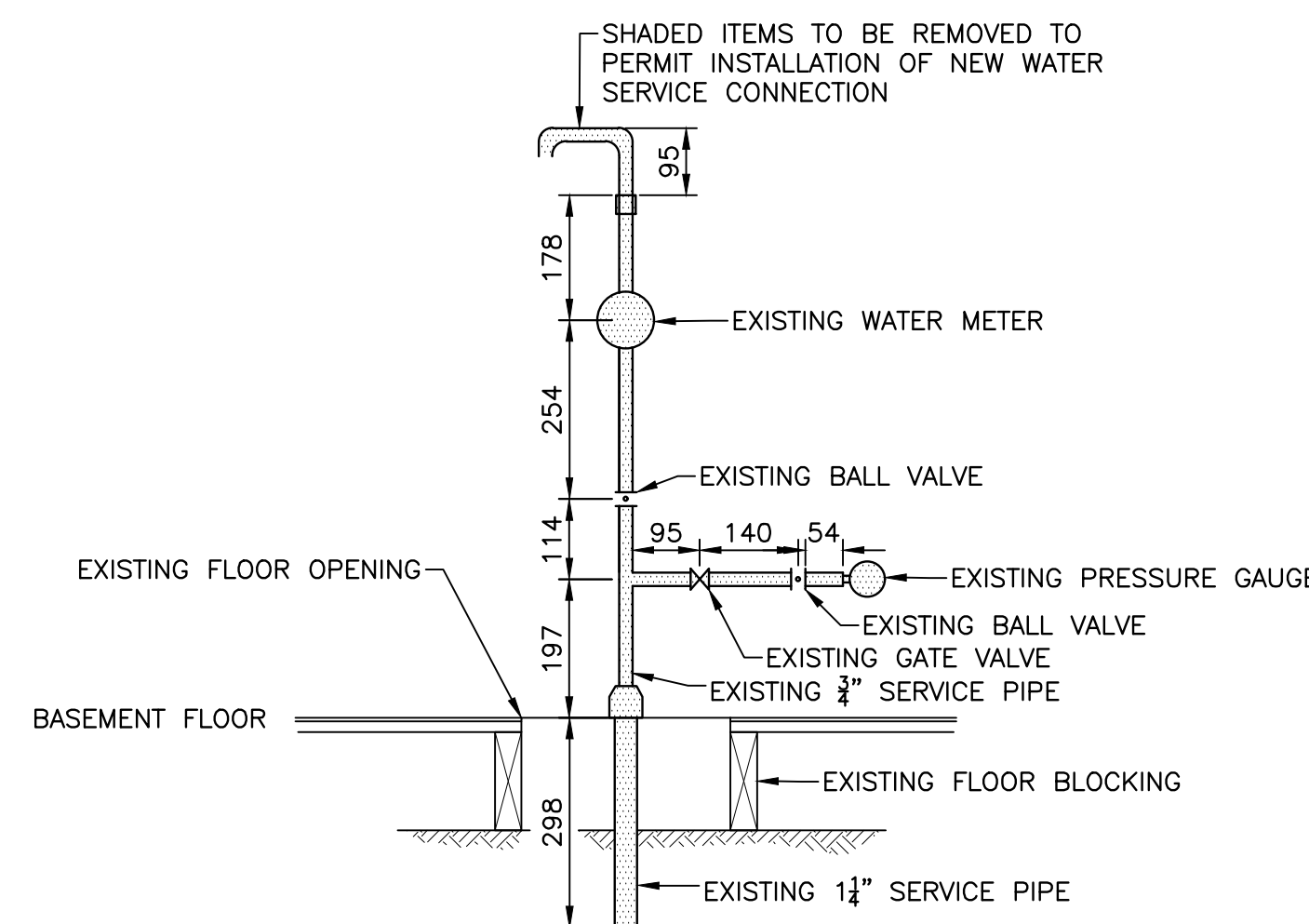
0mm 500mm 1000mm 1500mm 2000mm 2500mm



POST HYDRANT DETAIL

SCALE: 1:20

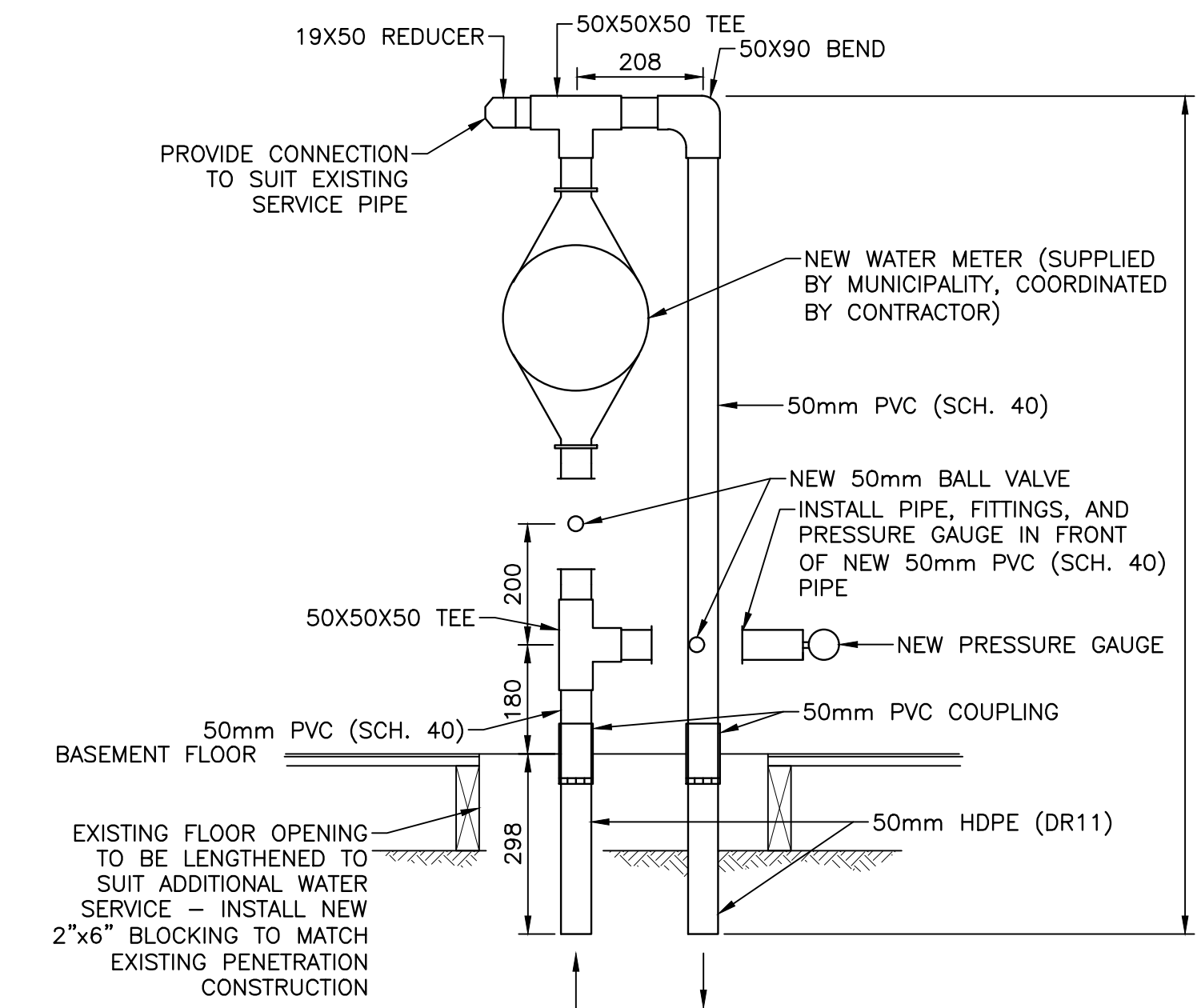
0mm 500mm 1000mm 1500mm 2000mm 2500mm



CONNECTION DETAIL - EXISTING WATER SERVICE

SCALE: NTS

EXISTING FLOOR OPENING
BASEMENT FLOOR
EXISTING FLOOR BLOCKING
EXISTING 1 1/2\"/>



CONNECTION DETAIL - NEW WATER SERVICE

SCALE: NTS

PROVIDE CONNECTION TO SUIT EXISTING SERVICE PIPE
BASEMENT FLOOR
EXISTING FLOOR OPENING TO BE LENGTHENED TO SUIT ADDITIONAL WATER SERVICE - INSTALL NEW 2"x6\"/>



A	ISSUED FOR ADDENDUM #1	04/15/2019
revisions		date

**WHARF CONSTRUCTION
CHETICAMP
NOVA SCOTIA**

**NEW SITE PLAN
WATER SERVICE
INSTALLATION**

designed	JRS	conçu
date		
drawn	DDF	dessiné
date		
approved		approuvé
date		
Tender		Soumission
PWSC Project Manager	Administrateur de projets TPSCC	
project number		no. du projet
	R.097716.005	
drawing no.		no. du dessin
	C1 OF C1	