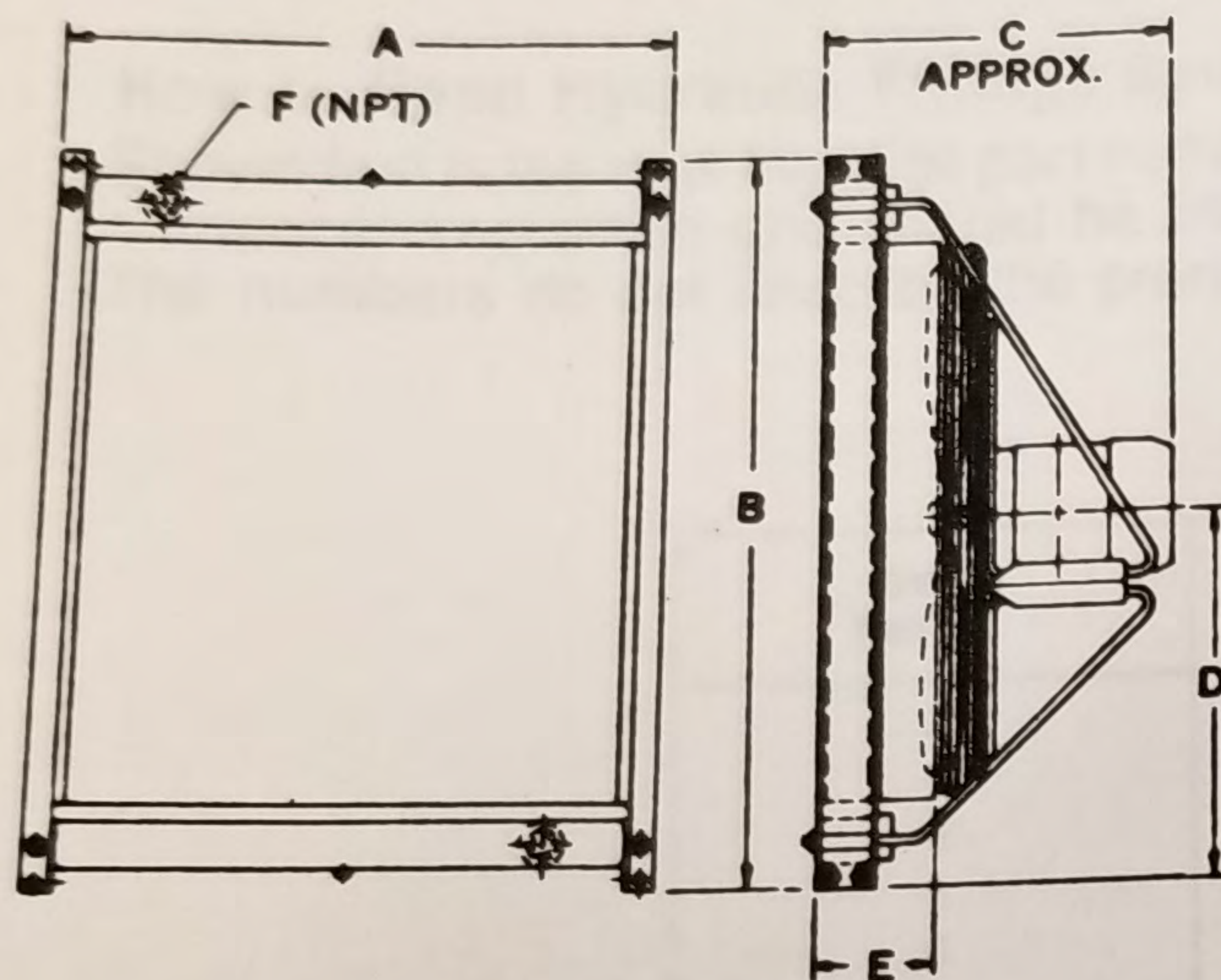
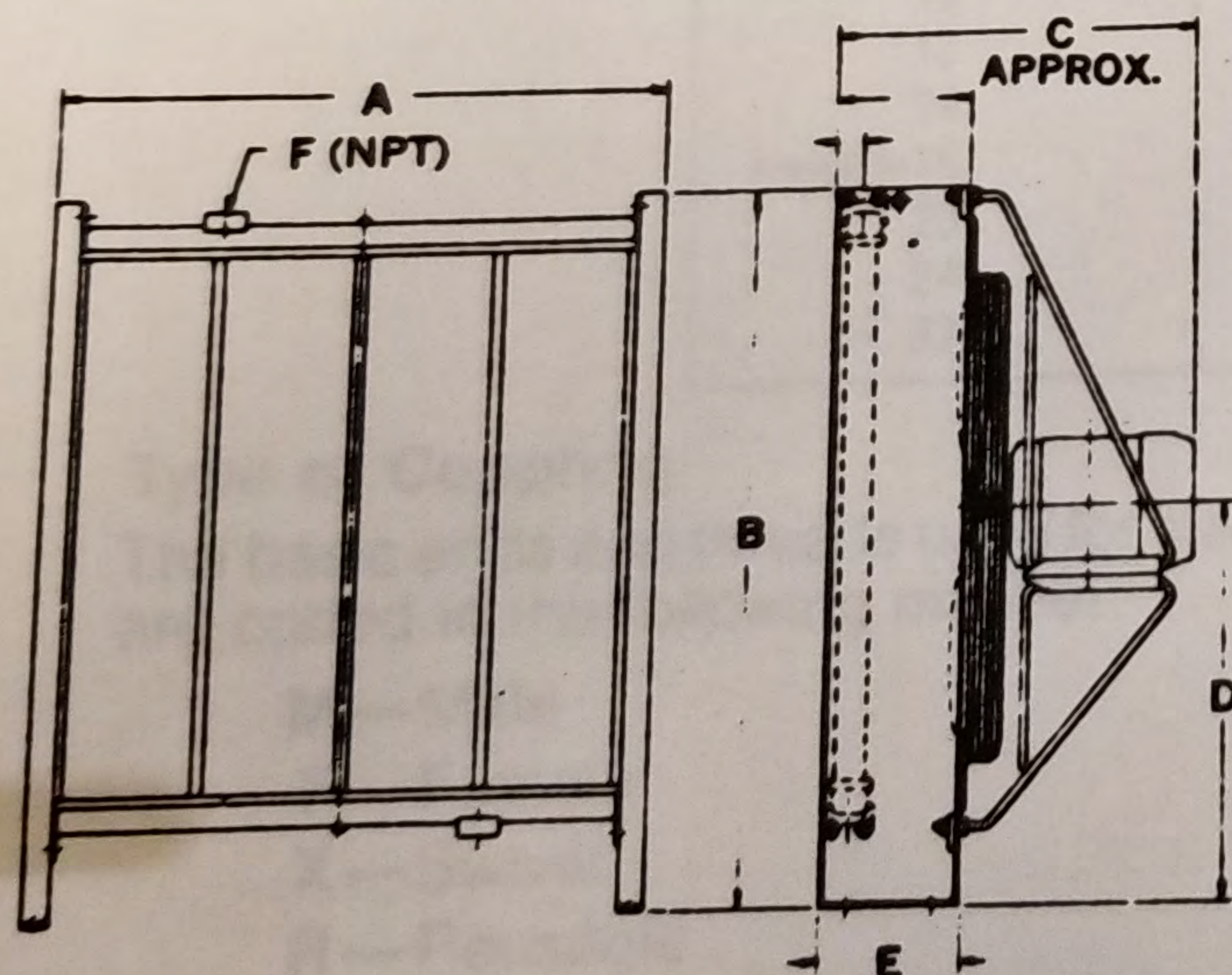


Standard Model SB Dimensions



Models SB-1 through SB-13



Model SB-18

Model	Dimensions, inches (mm)							Motor*		Fluid Cap. Gal. (l)	Shpg. Wt. lb. (kg)
	A	B	C	D	E	F (npt)	Fan Dia.	HP (kW)	RPM		
SB-1	12.5 (317.5)	17.5 (444.5)	18.5 (469.9)	8.8 (223.5)	5.4 (137.2)	0.75 (91.1)	9.0 (228.6)	0.5 (0.4)	3450	0.42 (1.6)	90 (40.8)
SB-2	17.0 (431.8)	23.5 (596.9)	17.0 (431.8)	11.8 (299.7)	5.8 (147.3)	1.0 (25.4)	14.0 (355.6)	0.75 (0.6)	3450	0.83 (31.4)	150 (68.0)
SB-4	26 (660.4)	33.3 (844.6)	18.8 (477.5)	16.6 (421.6)	6.3 (160.0)	1.25 (31.8)	22.0 (558.8)	1.5 (1.1)	1725	1.73 (6.6)	275 (124.7)
SB-6	31.5 (800.1)	38.5 (977.9)	18.8 (477.5)	19.3 (490.2)	6.2 (157.5)	1.5 (38.1)	27.0 (685.8)	2.0 (1.5)	1725	2.47 (9.36)	370 (167.8)
SB-7	35 (889.0)	44 (1117.6)	19.4 (494)	22 (558.8)	6.6 (167.6)	2.0 (50.8)	30 (762.0)	2.0 (1.5)	1725	4.8 (18.2)	500 (226.8)
SB-10	41.0 (1041.4)	51.3 (1303.2)	20.8 (528.6)	25.6 (650.2)	6.6 (167.6)	2.0 (50.8)	30.0 (762.0)	3.0 (2.2)	1725	6.02 (22.7)	675 (306.2)
SB-13	45.8 (1163.3)	55.0 (1397.0)	26.5 (673.1)	26.5 (673.1)	8.0 (203.2)	2.5 (63.5)	36 (914.4)	5 (3.7)	1150	7.7 (29.1)	800 (362.9)
SB-18	57.75 (1468.1)	67.0 (1701.8)	36 (914.4)	36.6 (929.6)	13.3 (337.8)	2.5 (63.5)	42 (1066.8)	7.5 (5.6)	1150	8.6 (32.6)	1110 (503.4)

Maximum operating temperature: 600°F (315°C)
Maximum operating pressure: 150 psi (1034 kPa)

* STANDARD MOTORS ARE 3-60-230/460 TEFC