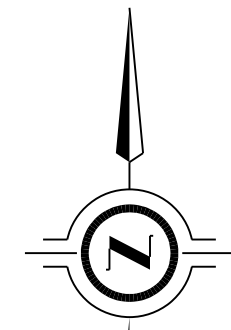
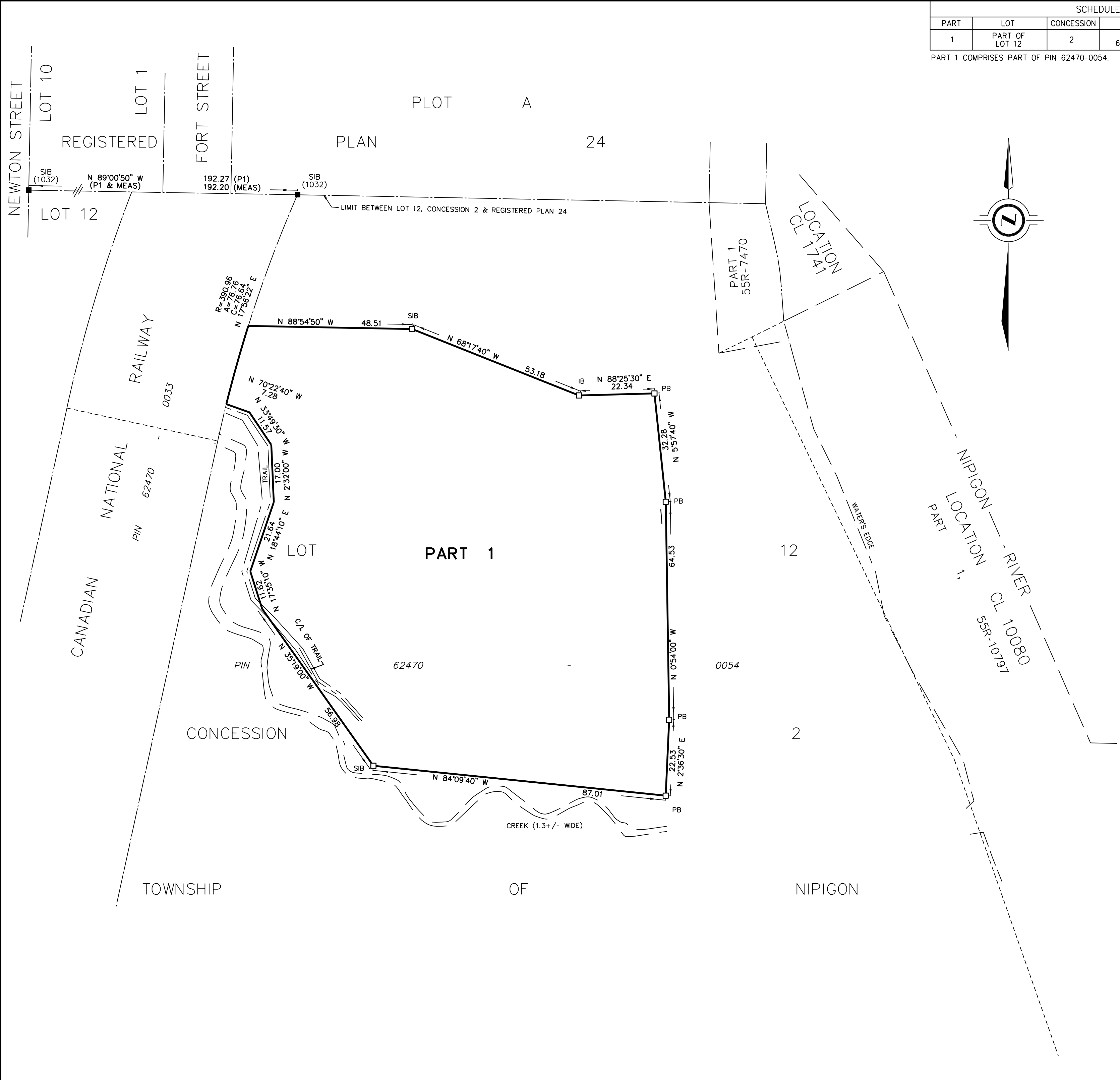


SCHEDULE				
PART	LOT	CONCESSION	PIN	AREA
1	PART OF LOT 12	2	PART OF 62470-0054	1.426 Ha.

PART 1 COMPRISES PART OF PIN 62470-0054.



PLAN OF SURVEY OF
PART OF LOT 12
CONCESSION 2
 TOWNSHIP OF NIPIGON
 DISTRICT OF THUNDER BAY
 SCALE 1 : 750



J.D. BARNES LIMITED
 THE INTENDED PLOT SIZE OF THIS PLAN IS 609mm IN WIDTH BY 457mm IN HEIGHT WHEN PLOTTED AT A SCALE OF 1:750

METRIC DISTANCES AND/OR COORDINATES SHOWN ON THIS PLAN ARE IN METRES AND CAN BE CONVERTED TO FEET BY DIVIDING BY 0.3048.

AREAS SHOWN ON THIS PLAN ARE IN HECTARES AND CAN BE CONVERTED TO ACRES BY MULTIPLYING BY 2.471.

NOTES
 BEARINGS ARE UTM GRID, DERIVED BY REAL TIME KINEMATIC (RTK) OBSERVATIONS FROM A LOCAL BASE STATION (N5 429 219.74, E 408 087.37), ESTABLISHED USING THE PRECISE POINT POSITIONING (PPP) SERVICE, TO OBSERVED REFERENCE POINTS (ORP's) A AND B. THE RESULTANT BEARING BETWEEN ORP's A AND B IS N 89°00'50" W, UTM ZONE 16, NAD83 (CSRS) (2010.0)
 DISTANCES ARE GROUND AND CAN BE CONVERTED TO GRID BY MULTIPLYING BY THE COMBINED SCALE FACTOR OF 0.999680.
 FOR BEARING COMPARISONS, A ROTATION OF 1°01'40" CLOCKWISE WAS APPLIED TO BEARINGS ON PLAN P1.

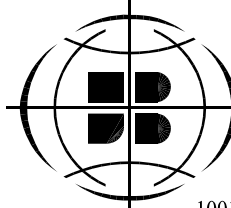
INTEGRATION DATA		
OBSERVED REFERENCE POINTS (ORPs): UTM ZONE 16, NAD83 (CSRS) (2010.0).		
COORDINATES TO URBAN ACCURACY PER SECTION 14 (2) OF O.REG 216/10.		
POINT ID	EASTING	NORTHING
ORP (A)	407 933.14	5 429 350.87
ORP (B)	407 741.03	5 429 354.17

COORDINATES CANNOT, IN THEMSELVES, BE USED TO RE-ESTABLISH CORNERS OR BOUNDARIES SHOWN ON THIS PLAN.

LEGEND	
■	DENOTES SURVEY MONUMENT FOUND
□	DENOTES SURVEY MONUMENT SET
SIB	DENOTES STANDARD IRON BAR
SSIB	DENOTES SHORT STANDARD IRON BAR
IB	DENOTES IRON BAR
WIT	DENOTES WITNESS
MEAS	DENOTES MEASURED
PWB	DENOTES PARSONS, WILSON & MILTON LTD., O.L.S.
JDB	DENOTES J.D. BARNES LIMITED, O.L.S.
P1	DENOTES RAILWAY PLAN 1519 BY E. TACUIM, O.L.S., DATED 1965
WV	DENOTES WATER VALVE
WK	DENOTES WATER KEY
FH	DENOTES FIRE HYDRANT
HP	DENOTES HYDRO POLE
MH	DENOTES MANHOLE

SURVEYOR'S CERTIFICATE
 I CERTIFY THAT:
 1. THIS SURVEY AND PLAN ARE CORRECT AND IN ACCORDANCE WITH THE SURVEYS ACT, THE SURVEYORS ACT AND THE LAND TITLES ACT AND THE REGULATIONS MADE UNDER THEM.
 2. THE SURVEY WAS COMPLETED ON THE XXX DAY OF XXXX, 2018.

DATE _____ JAYSON LADINES
 ONTARIO LAND SURVEYOR
 THIS PLAN OF SURVEY RELATES TO AOLS PLAN SUBMISSION FORM NUMBER XXXXXX



J. D. BARNES SURVEYING
 LIMITED MAPPING
 GIS
 LAND INFORMATION SPECIALISTS
 1001 WILLIAM STREET, SUITE 102A, THUNDER BAY, ON P7B 6M1
 T: (807) 622-6277 F: (807) 626-8040 www.jdbarnes.com

DRAWN BY: KJ	CHECKED BY: JL	REFERENCE NO.: 18-32-323-00
FILE: G:\18-32-323\00\Drawing\323-00-rplan.dgn		DATED: 11/27/18