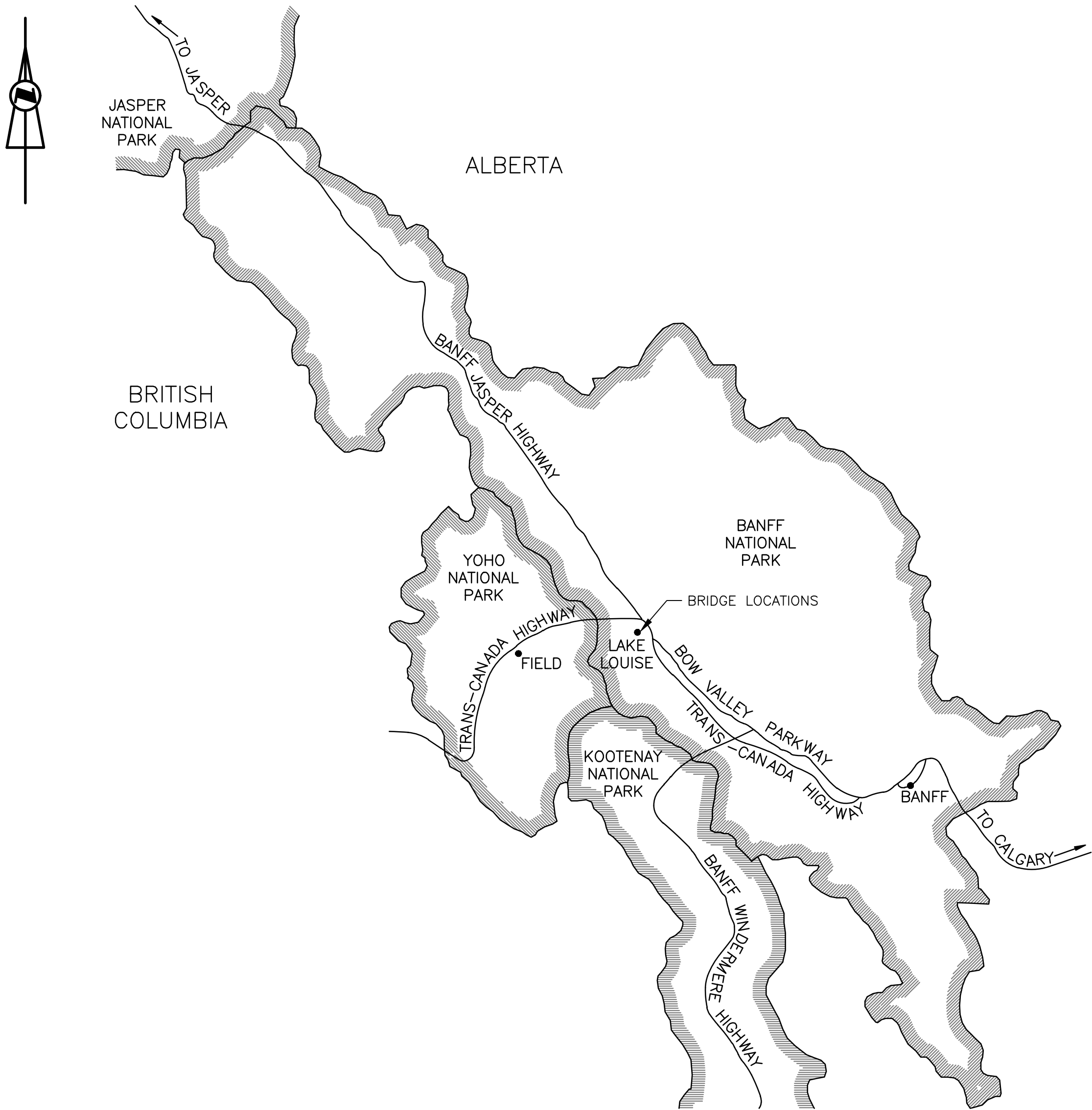


BANFF NATIONAL PARK, ALBERTA

LAKE LOUISE CAMPGROUND  
BRIDGE REHABILITATION

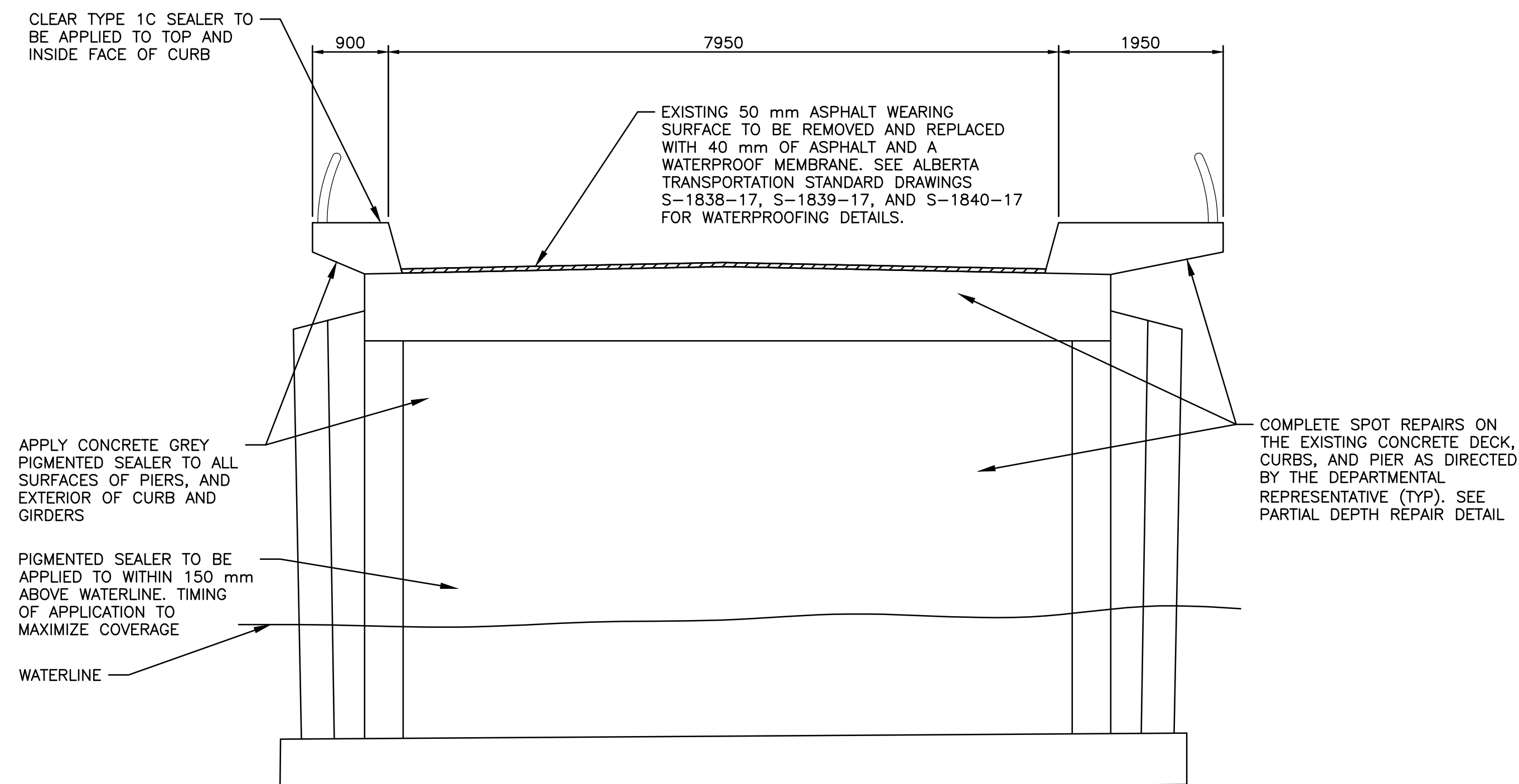
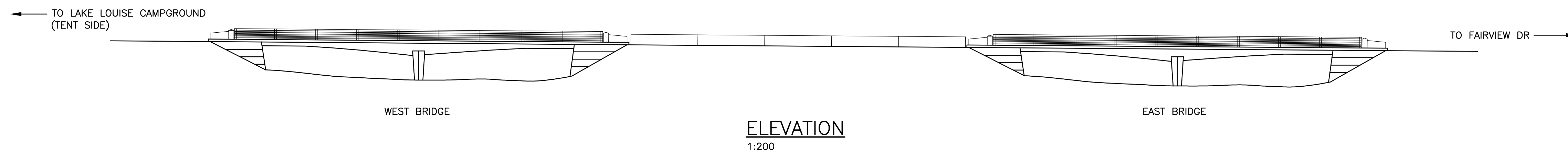
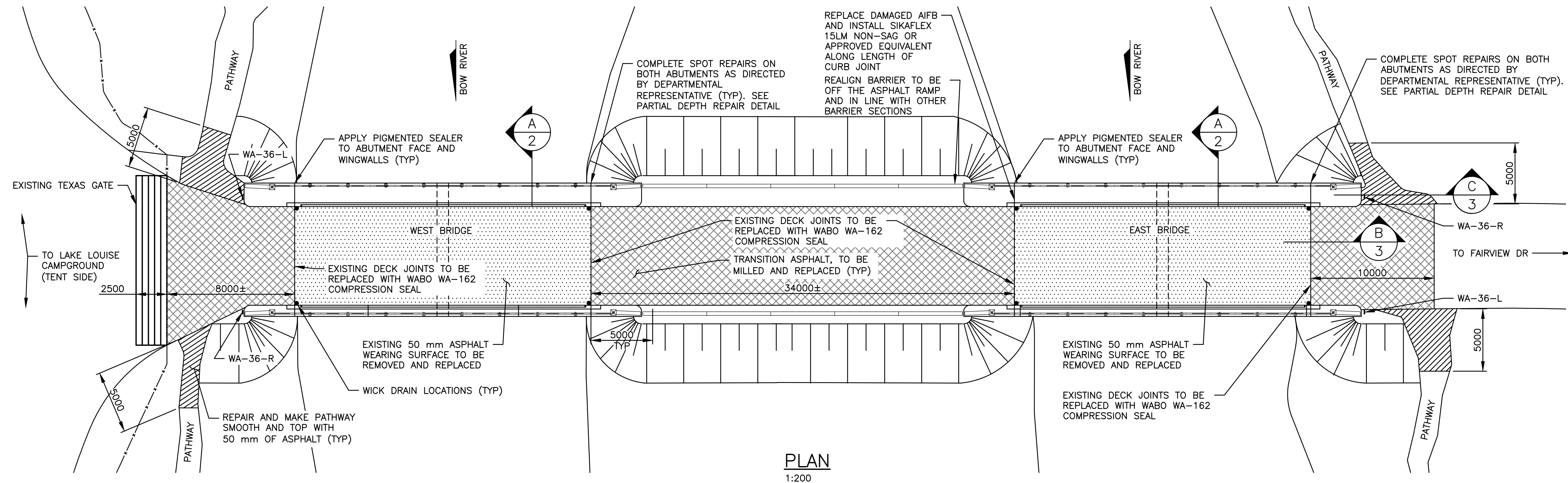
DRAWING LIST

- S1COVER SHEET, DRAWING LIST AND LOCATION MAP
- S2GENERAL ARRANGEMENT
- S3DETAILS



LOCATION MAP  
NTS

0	2019.02.12	ISSUED FOR TENDER	JT	KK
No.	Date	Description	Drawn by	Approved
Revision				
A detail number				
B source drawing no.				
C detail on drawing no.				
Consultant's Name			Eng. Stamp	
Stantec				
PERMIT TO PRACTICE STANTEC CONSULTING LTD. Signature: Date: 2019-02-12 PERMIT NUMBER: P 0258 The Association of Professional Engineers and Geoscientists of Alberta				
Client Parks Canada Agency Lake Louise, Yoho, and Kootenay Field Unit				
Project title LAKE LOUISE CAMPGROUND BRIDGE REHABILITATION				
Drawing title BRIDGE REHABILITATION COVER SHEET				
Surveyed by -		Drawn by JT		Date 2019-02-12
Designed by TU		Reviewed by KK		Scale -
PWGSC Project Manager -				
Client Acceptance Park Responsible Officer			Approved by PWGSC Project Manager	
Project No. 113678159		Asset No. -		Sheet No. 1 OF 3
Drawing Reference No. S1				




0	2019.02.12	ISSUED FOR TENDER	JT	KK
No.	Date	Description	Drawn by	Approved

Revision	A	B	C
A	detail number	source drawing no.	detail on drawing no.

Consultant's Name	Eng. Stamp
<b>Stantec</b>	

PERMIT TO PRACTICE STANTEC CONSULTING LTD. Signature: <i>[Signature]</i> Date: 2019-02-13 PERMIT NUMBER: P 0258 The Association of Professional Engineers and Geoscientists of Alberta
---

Client	Parks Canada Agency
	Lake Louise, Yoho and Kootenay Field Unit

Project title	LAKE LOUISE CAMPGROUND BRIDGE REHABILITATION
---------------	--

Drawing title	BRIDGE REHABILITATION GENERAL ARRANGEMENT
---------------	---

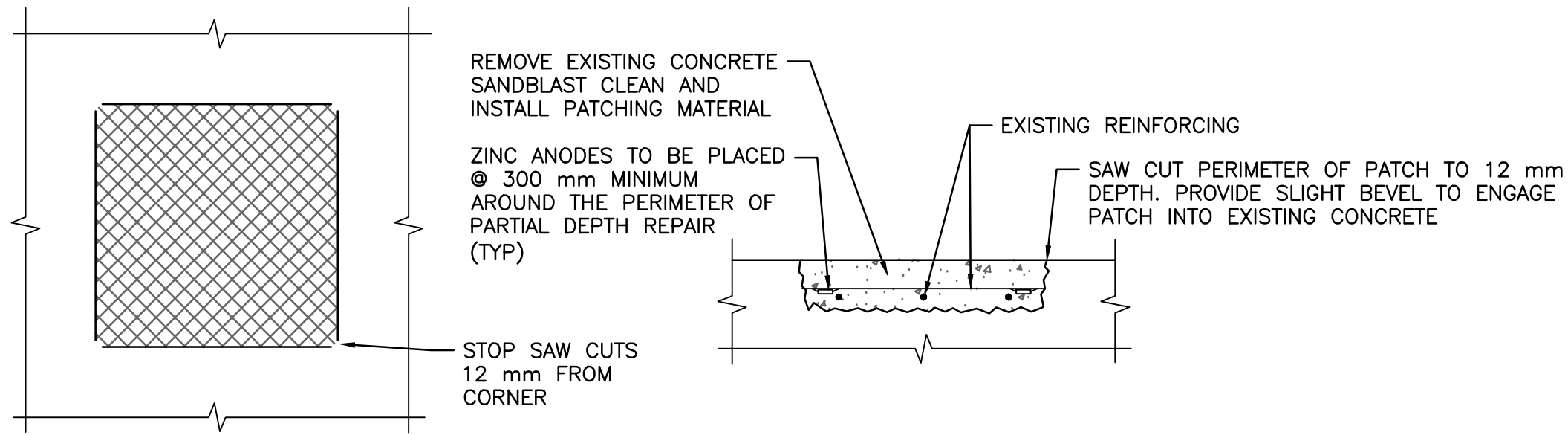
Surveyed by	Drawn by	Date
-	JT	2019-02-12
Designed by	Reviewed by	Scale
TU	KK	-

PWGSC Project Manager	-
Client Acceptance	Approved by
Park Representative Officer	PWGSC Project Manager

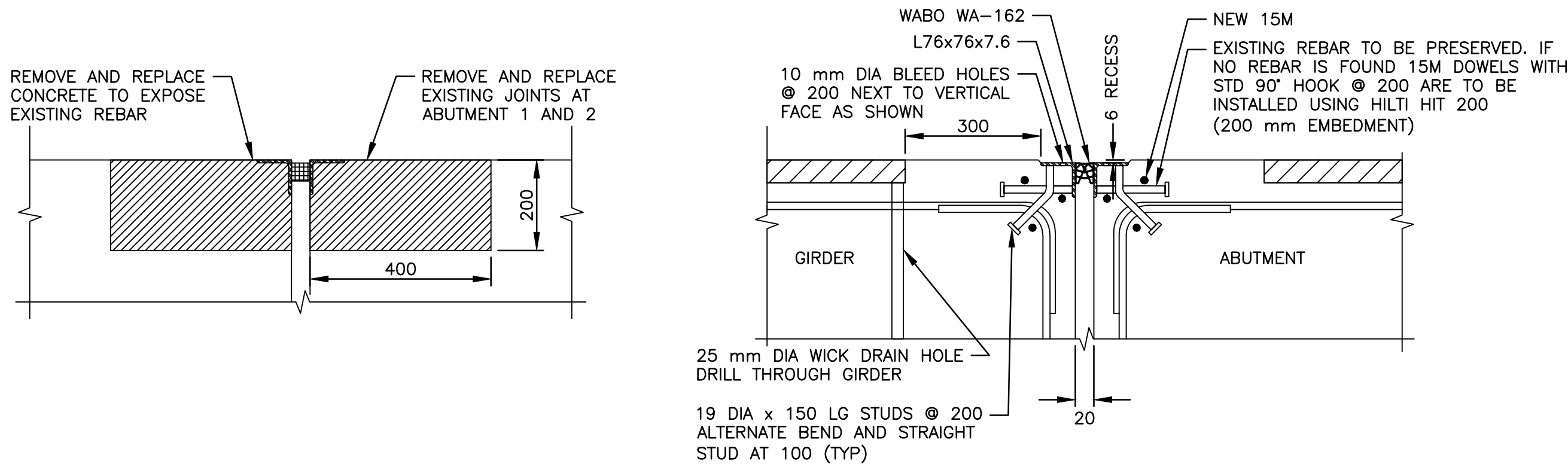
Project No.	Asset No.	Sheet No.
113678159	-	2

Project No. 113678159	Sheet No. -	Sheet No. 2
Drawing Reference No. S2		OF 3

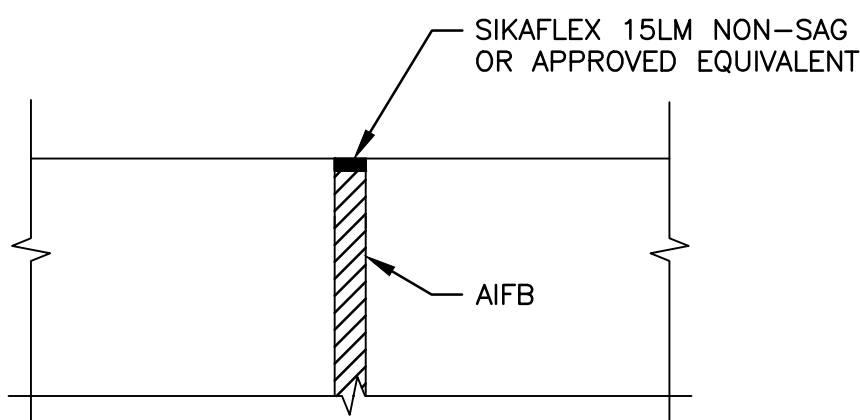




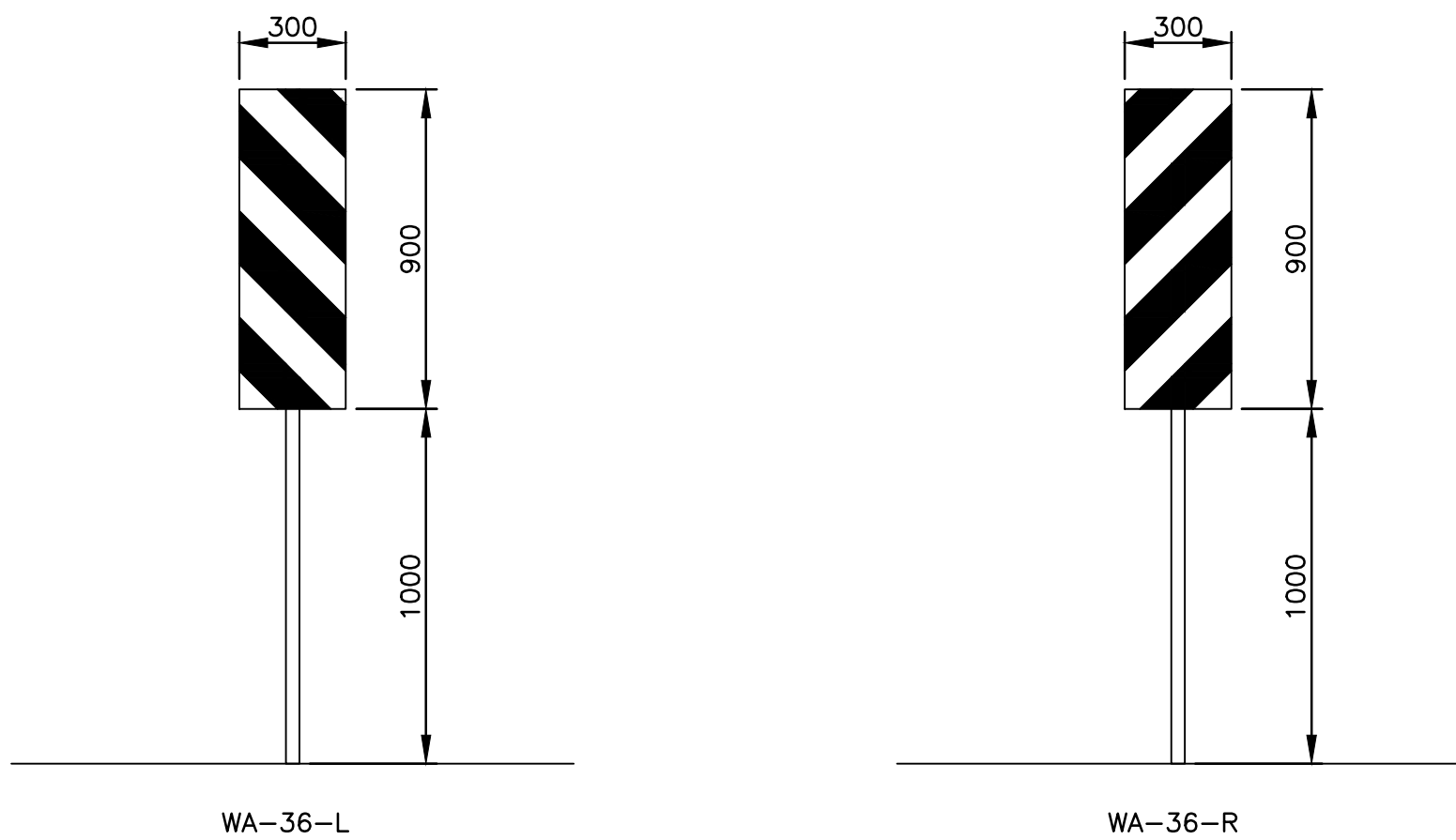
**PARTIAL DEPTH REPAIR DETAIL**  
SCALE 1:10



**EXPANSION JOINT REPLACEMENT DETAIL — DECK**  
SCALE 1:10



**EXPANSION JOINT REPLACEMENT DETAIL — CURB**  
SCALE 1:10



**HAZARD MARKER SIGNAGE**  
SCALE 1:20

### SIGNAGE NOTES

- FREESTANDING SIGNS TO BE MOUNTED ON 100 x 150 PRESSURE TREATED WOOD POST AND EMBEDDED IN 3000 CLASS C CONCRETE TO A MINIMUM DEPTH OF 1800 mm.
- INSTALL POST PLUMB. FINISH CONCRETE LEVEL WITH SURROUNDING GRADE.
- MOUNTING HEIGHT AS SHOWN ON SIGNAGE DETAILS.
- SIGNS TO BE IN ACCORDANCE WITH ALBERTA PROVINCIAL STANDARDS.


0	2019.02.12	ISSUED FOR TENDER	JT	KK
No.	Date	Description	Drawn by	Approved

Revision				
A	detail number			
B	source drawing no.			
C	detail on drawing no.			

Consultant's Name	Eng. Stamp
<b>Stantec</b>	

<b>PERMIT TO PRACTICE</b> <b>STANTEC CONSULTING LTD.</b> Signature: <i>[Signature]</i> Date: 2019-02-13 <b>PERMIT NUMBER: P 0258</b> The Association of Professional Engineers and Geoscientists of Alberta
--

<b>Client</b> Parks Canada Agency Lake Louise, Yoho and Kootenay Field Unit
---

<b>Project title</b> LAKE LOUISE CAMPGROUND BRIDGE REHABILITATION
---

<b>Drawing title</b> BRIDGE REHABILITATION DETAILS
---

Surveyed by: — Designed by: TU	Drawn by: JT Reviewed by: KK	Date: 2019-02-12 Scale: —
-----------------------------------	---------------------------------	------------------------------

<b>PWGSC Project Manager</b> —
-----------------------------------

<b>Client Acceptance</b> Park Responsible Officer: — PWGSC Project Manager: —	<b>Approved by</b> —
---	-------------------------

Project No.: 113678159 Drawing Reference No.: S3	Asset No.: —	Sheet No.: 3 OF 3
---	--------------	----------------------